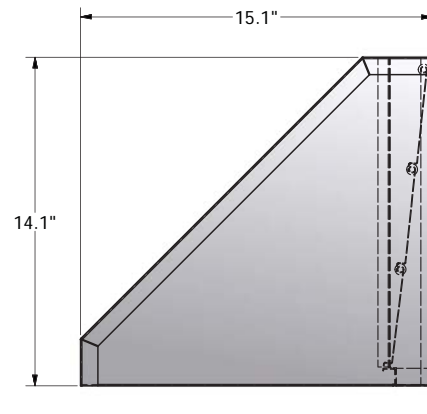
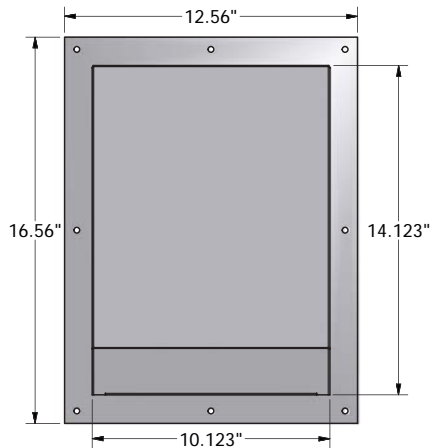
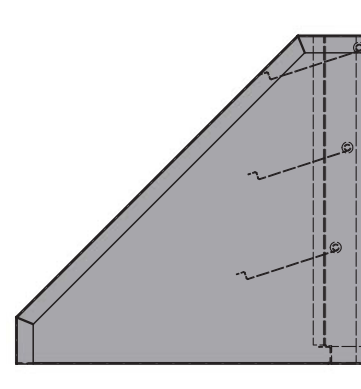
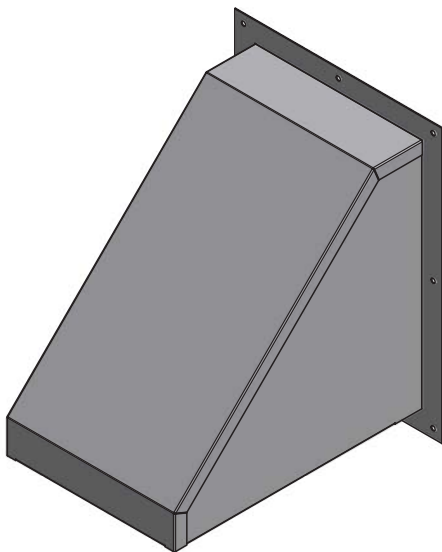


DBRD3672

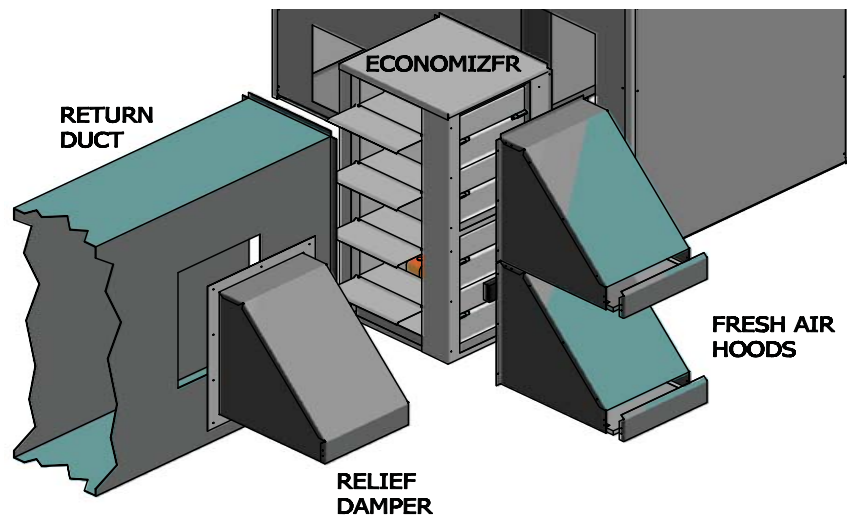
DUCT-MOUNTED BAROMETRIC RELIEF DAMPER



DAMPERS CLOSED



DAMPERS OPEN



SPECIFICATIONS

APPLICATIONS UP TO 6 TONS REQUIRE ONE DAMPER

APPLICATIONS FROM 7.5 -12.5 TONS REQUIRE 2 DAMPER

INSTALLED UPSTREAM OF ECONOMIZER RETURN DAMPERS IN HORIZONTAL APPLICATIONS

PAINTED NICKEL GRAY TO MATCH DAIKIN EQUIPMENT