



**MULTI-POSITION, VARIABLE-SPEED,
ECM-BASED AIR HANDLER
WITH INTERNAL TXV
COMFORTNET™ COMPATIBLE
1½ TO 5 TONS**

Contents

| | |
|-------------------------------|----|
| Air Handler Nomenclature..... | 2 |
| Heater Kit Nomenclature | 2 |
| Product Specifications..... | 3 |
| Dimensions | 4 |
| Airflow Data | 5 |
| Heat Kit Data..... | 10 |
| Wiring Diagram..... | 13 |
| Accessories | 15 |

Product Features

- Internal factory-installed thermal expansion valves for cooling and heat pump applications
- Variable-speed ECM blower motor
- ComfortNet™ Communicating System compatible
- Auto configuration of the airflow and tonnage in communicating mode
- Provides constant CFM over a wide range of static pressure conditions independent of duct system
- CFM indicator
- Fault recall of six most recent faults
- Provides adjustable low CFM for efficient fan-only operation
- Improved humidity and comfort control
- Built-in compatibility with multi-stage heat pump and cooling applications
- All-aluminum evaporator coil
- 3 kW – 25 kW electric heater kits
- AHRI certified; ETL listed
- Rigid SmartFrame™ cabinet
- Cabinet air leakage less than 2.0% at 1.0 inch H₂O when tested in accordance with ASHRAE standard 193
- Cabinet air leakage less than 1.4% at 0.5 inch H₂O when tested in accordance with ASHRAE standard 193
- Horizontal or vertical configuration capabilities
- 21" depth for easier attic access
- DecaBDE-free thermoplastic drain pan with secondary drain connections
- Screw-less sides and back helps to reduce condensation when installed in humid locations
- Foil-faced insulation covers the internal casing to reduce cabinet condensation
- Galvanized, leather grain-embossed finish
- Glue-less cabinet insulation retention
- Tool-less filter access



* Complete warranty details available from your local dealer or at www.goodmanmfg.com. To receive the 10-Year Parts Limited Warranty, online registration must be completed within 60 days of installation. Online registration is not required in California or Quebec.

| | A | V | P | T | C | 25 | B | 1 | 4 | AA | |
|-------------------------------------------------------|---|---|---|---|---|-----|---|---|----|-------|------------------------------------|
| | 1 | 2 | 3 | 4 | 5 | 6,7 | 8 | 9 | 10 | 11,12 | |
| Brand | | | | | | | | | | | Engineering* |
| A Single-Piece Airhandler | | | | | | | | | | | Major/Minor Revisions |
| | | | | | | | | | | | *Not used for inventory management |
| Unit Application | | | | | | | | | | | Refrigerant Charge |
| R Multi Position PSC Motor | | | | | | | | | | | 4 = R-410A |
| S Multi Position EEM Motor | | | | | | | | | | | |
| V Multi Position Variable-Speed Motor-Communitacating | | | | | | | | | | | Electrical |
| | | | | | | | | | | | 1 208/230V, 1 Phase, 60 Hz |
| Cabinet Finish | | | | | | | | | | | Cabinet Width |
| U Unpainted | | | | | | | | | | | B = 17½" |
| P Painted | | | | | | | | | | | C = 21" |
| | | | | | | | | | | | D = 24½" |
| Expansion Device | | | | | | | | | | | Nominal Capacity @ 13SEER |
| T Expansion Device | | | | | | | | | | | 24 = 2 Tons |
| V Inverter Tuned Expansion Valve | | | | | | | | | | | 31 = 2½ Tons |
| | | | | | | | | | | | 48 = 4 Tons |
| | | | | | | | | | | | 25 = 2 Tons |
| | | | | | | | | | | | 36 = 3 Tons |
| | | | | | | | | | | | 49 =3-3½ Tons |
| | | | | | | | | | | | 29 = 2 Tons |
| | | | | | | | | | | | 37 = 2½-3½ Tons |
| | | | | | | | | | | | 59 = 4-5 Tons |
| | | | | | | | | | | | 30 = 2½ Tons |
| | | | | | | | | | | | 42 = 3½ Tons |
| | | | | | | | | | | | 60 = 5 Tons |
| | | | | | | | | | | | 61 = 4-5 Tons |
| | | | | | | | | | | | Communications |
| | | | | | | | | | | | C = ComfortNet™ Compatible |

| | HKS | X | 03 | X | A | AA | |
|-------------------------------------|-----|-------------------------|----|---|---|-----|---------------------------|
| | 1 | 2 | 3 | 4 | 5 | 6,7 | |
| Unit Type | | | | | | | Revisions |
| HKS Heat Kit for Air Handlers | | | | | | | Engineering Revisions |
| Phase | | | | | | | Phase |
| X No circuit breaker | | | | | | | A Single Phase 208 V |
| C Circuit Breaker | | | | | | | E Three Phase 240 V |
| | | | | | | | B Single Phase 240 V |
| | | | | | | | F Three Phase 208/240 V |
| | | | | | | | C Single Phase 208/240 V |
| | | | | | | | G Three Phase 460 V |
| | | | | | | | D Three Phase 208 V |
| Heating Capacity @ 240 Volts | | | | | | | Cabinet Size (MAX) |
| 03 3.0 kW | 15 | 14.4 kW | | | | | C C Cabinet |
| 05 4.5 kW | 19 | 19.2 k@ wth 150F limit | | | | | D D Cabinet |
| 06 6.0 kW | 20 | 19.2 kW with 170F limit | | | | | X All Cabinet Sizes |
| 08 8.0 kW | 25 | 25.0 kW | | | | | |
| 10 9.6 kW | | | | | | | |

| | AVPTC 24B14A* | AVPTC 25B14A* | AVPTC 29B14A* | AVPTC 30C14A* | AVPTC 31C14A* | AVPTC 36C14A* | AVPTC 37B14A* | AVPTC 37C14A* | AVPTC 37D14A* |
|--------------------------------|------------------|------------------|------------------|------------------|------------------|------------------|------------------|------------------|------------------|
| NOMINAL RATINGS | | | | | | | | | |
| Cooling (BTU/h) | 24,000 | 24,000 | 30,000 | 30,000 | 30,000 | 36,000 | 36,000 | 36,000 | 36,000 |
| CFM (High range) | 1100/600 | 1085/650 | 1085/610 | 1200/600 | 1315/870 | 1600/700 | 1085/610 | 1315/870 | 1375/865 |
| BLOWER | | | | | | | | | |
| Diameter | 9½" | 9½" | 9½" | 10⅝" | 10⅝" | 10⅝" | 9½" | 10⅝" | 10⅝" |
| Width | 6" | 6" | 6" | 8" | 8" | 10⅝" | 6" | 8" | 10⅝" |
| Coil Drain Connection FPT | ¾" | ¾" | ¾" | ¾" | ¾" | ¾" | ¾" | ¾" | ¾" |
| SERVICE VALVE | | | | | | | | | |
| Liquid | ⅝" | ⅝" | ⅝" | ⅝" | ⅝" | ⅝" | ⅝" | ⅝" | ⅝" |
| Suction | ¾" | ¾" | ⅞" | ⅞" | ⅞" | ⅞" | ⅞" | ⅞" | ⅞" |
| ELECTRICAL DATA | | | | | | | | | |
| Voltage | 208/240 | 208/240 | 208/240 | 208/240 | 208/240 | 208/240 | 208/240 | 208/240 | 208/240 |
| Min Circuit Ampacity | 4.9/4.9 | 4.9/4.9 | 6.5/6.5 | 4.9/4.9 | 6.5/6.5 | 6.5/6.5 | 6.5/6.5 | 6.5/6.5 | 6.5/6.5 |
| Max. Overcurrent Device (amps) | 15/15 | 15/15 | 15/15 | 15/15 | 15/15 | 15/15 | 15/15 | 15/15 | 15/15 |
| Minimum VAC | 197 | 197 | 197 | 197 | 197 | 197 | 197 | 197 | 197 |
| Maximum VAC | 253 | 253 | 253 | 253 | 253 | 253 | 253 | 253 | 253 |
| BLOWER MOTOR | | | | | | | | | |
| FLA | 3.9 | 3.9 | 5.2 | 3.9 | 5.2 | 5.2 | 5.2 | 5.2 | 5.2 |
| HP | ½ | ½ | ¾ | ½ | ¾ | ¾ | ¾ | ¾ | ¾ |
| SHIP WEIGHT (LBS) | 100 | 116 | 129 | 118 | 144 | 118 | 129 | 144 | 155 |

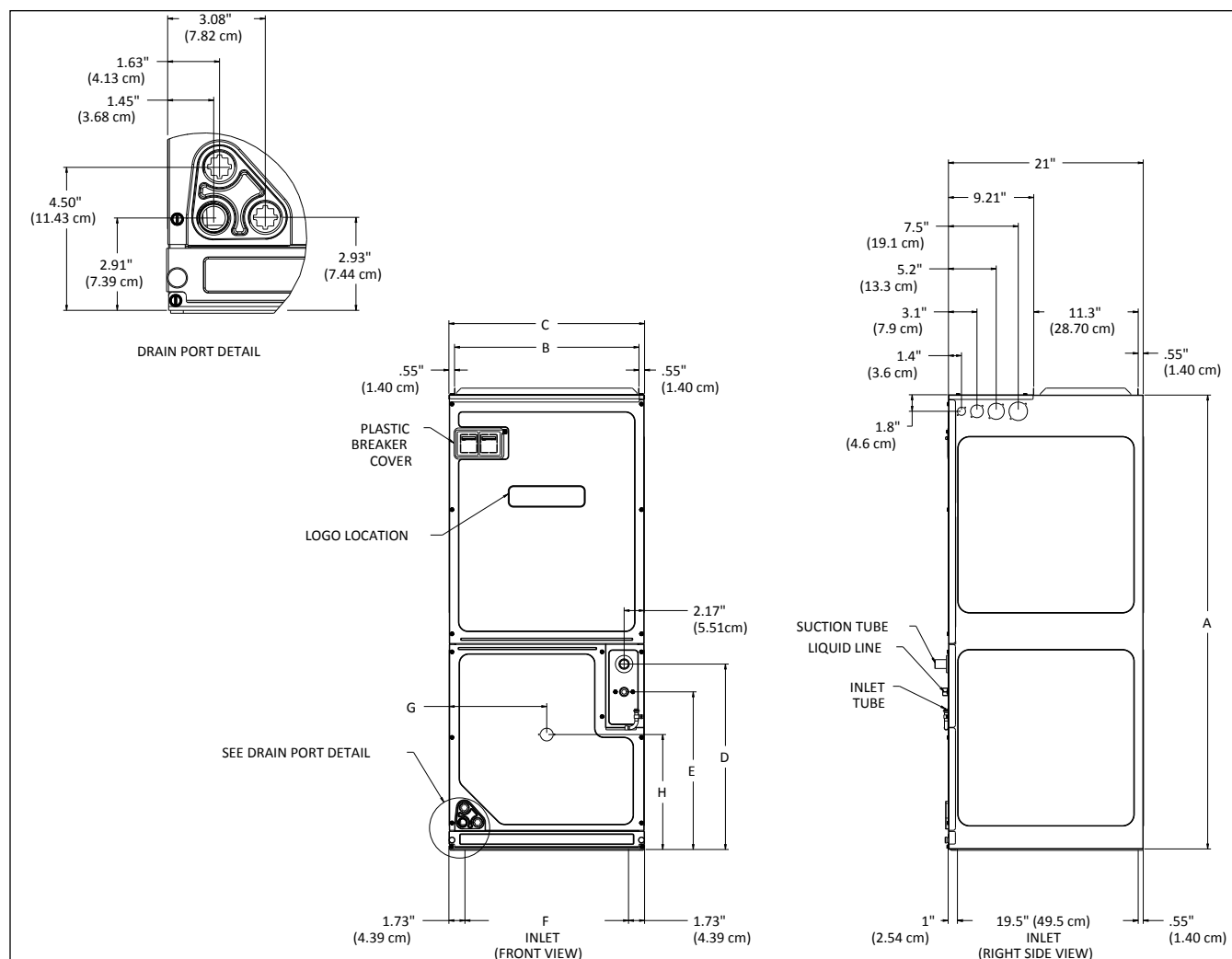
Note: Minimum Circuit Ampacity (MCA) and Maximum Overcurrent Protection (MOP) for blower without supplemental heat installed.

Refer to unit nameplate and/or Heat Kit Data for specification with approved accessory heaters installed

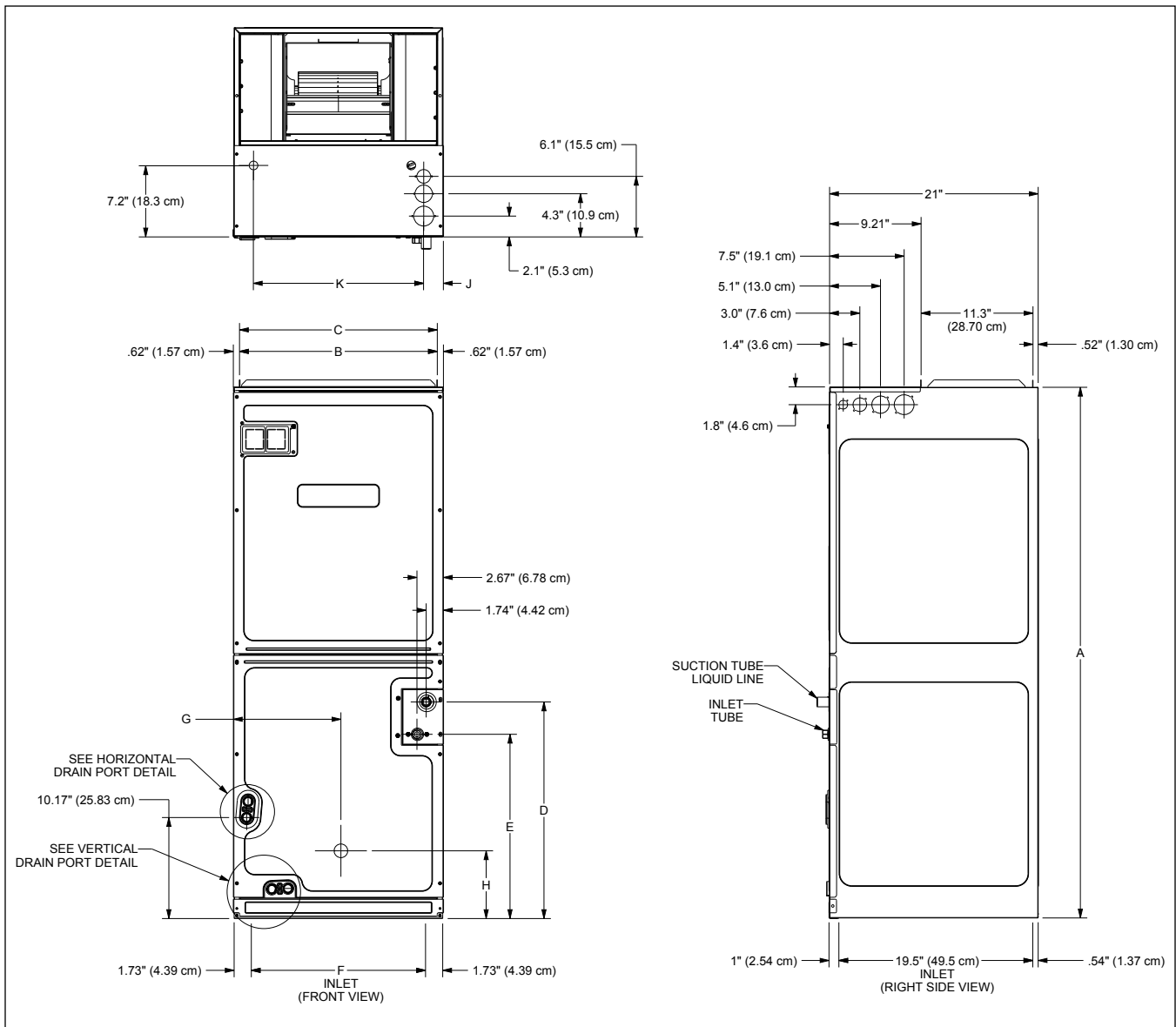
| | AVPTC 42D14A* | AVPTC 48C14A* | AVPTC 48D14A* | AVPTC 49D14A* | AVPTC 59C14A* | AVPTC 59D14A* | AVPTC 60D14A* | AVPTC 61D14A* |
|--------------------------------|------------------|------------------|------------------|------------------|------------------|------------------|------------------|------------------|
| NOMINAL RATINGS | | | | | | | | |
| Cooling (BTU/h) | 42,000 | 42,000 | 48,000 | 42,000 | 48,000 | 48,000 | 60,000 | 60,000 |
| CFM (High range) | 1700/800 | 1660/700 | 1800/1350 | 1530/1195 | 1595/875 | 1990/1445 | 2000/1600 | 2025/1630 |
| BLOWER | | | | | | | | |
| Diameter | 10⅝" | 10⅝" | 10⅝" | 10⅝" | 10⅝" | 11⅝" | 11⅝" | 11⅝" |
| Width | 10⅝" | 10⅝" | 10⅝" | 10⅝" | 8" | 10⅝" | 10⅝" | 10⅝" |
| Coil Drain Connection FPT | ¾" | ¾" | ¾" | ¾" | ¾" | ¾" | ¾" | ¾" |
| SERVICE VALVE | | | | | | | | |
| Liquid | ⅝" | ⅝" | ⅝" | ⅝" | ⅝" | ⅝" | ⅝" | ⅝" |
| Suction | ⅞" | ⅞" | ⅞" | ⅞" | ⅞" | ⅞" | ⅞" | ⅞" |
| ELECTRICAL DATA | | | | | | | | |
| Voltage | 208/240 | 208/240 | 208/240 | 208/240 | 208/240 | 208/240 | 208/240 | 208/240 |
| Min Circuit Ampacity | 6.5/6.5 | 6.5/6.5 | 6.5/6.5 | 6.5/6.5 | 8.6/8.6 | 8.6/8.6 | 8.6/8.6 | 8.6/8.6 |
| Max. Overcurrent Device (amps) | 15/15 | 15/15 | 15/15 | 15/15 | 15/15 | 15/15 | 15/15 | 15/15 |
| Minimum VAC | 197 | 197 | 197 | 197 | 197 | 197 | 197 | 197 |
| Maximum VAC | 253 | 253 | 253 | 253 | 253 | 253 | 253 | 253 |
| BLOWER MOTOR | | | | | | | | |
| FLA | 5.2 | 5.2 | 5.2 | 5.2 | 6.9 | 6.9 | 6.9 | 6.9 |
| HP | ¾ | ¾ | ¾ | ¾ | 1 | 1 | 1 | 1 |
| SHIP WEIGHT (LBS) | 155 | 125 | 167 | 167 | 144 | 155 | 167 | 167 |

Note: Minimum Circuit Ampacity (MCA) and Maximum Overcurrent Protection (MOP) for blower without supplemental heat installed.

Refer to unit nameplate and/or Heat Kit Data for specification with approved accessory heaters installed



| MODEL | A | B | C | D | E | F | G | H |
|------------|----|----------------------------------|--------------------------------|---------------------------------|---------------------------------|----------------------------------|---------------------------------|----------------------------------|
| AVPTC24B14 | 45 | 16 ³ / ₈ | 17 ¹ / ₂ | 18 | 15 | 14 ³ / ₁₆ | 8 ¹³ / ₁₆ | 11 ¹⁵ / ₁₆ |
| AVPTC30C14 | 49 | 19 ¹⁵ / ₁₆ | 21 | 20 | 17 | 17 ¹¹ / ₁₆ | 10 ¹ / ₂ | 12 ³ / ₈ |
| AVPTC36C14 | 49 | 19 ¹⁵ / ₁₆ | 21 | 20 | 17 | 17 ¹¹ / ₁₆ | 10 ¹ / ₂ | 12 ³ / ₈ |
| AVPTC42D14 | 58 | 23 ⁵ / ₁₆ | 24 ¹ / ₂ | 28 ³ / ₁₆ | 25 ³ / ₁₆ | 21 ³ / ₁₆ | 12 ⁵ / ₁₆ | 12 ³ / ₈ |
| AVPTC48C14 | 49 | 19 ¹⁵ / ₁₆ | 21 | 20 | 17 | 17 ¹¹ / ₁₆ | 10 ¹ / ₂ | 12 ³ / ₈ |
| AVPTC48D14 | 58 | 23 ⁵ / ₁₆ | 24 ¹ / ₂ | 28 ³ / ₁₆ | 25 ³ / ₁₆ | 21 ³ / ₁₆ | 12 ⁵ / ₁₆ | 12 ³ / ₈ |
| AVPTC60D14 | 58 | 23 ⁵ / ₁₆ | 24 ¹ / ₂ | 28 ³ / ₁₆ | 25 ³ / ₁₆ | 21 ³ / ₁₆ | 12 ⁵ / ₁₆ | 12 ³ / ₈ |



| MODEL | A | B | C | D | E | F | G | H |
|-------------|-------------------|-------------------|------------------|--------------------|-------------------|--------------------|--------------------|-------------------|
| AVPTC25B14* | 45 | 16 $\frac{3}{8}$ | 17 $\frac{1}{2}$ | 15 $\frac{1}{4}$ | 12 | 14 $\frac{1}{6}$ | 9 $\frac{1}{8}$ | 12 $\frac{3}{8}$ |
| AVPTC29B14* | 53 $\frac{7}{16}$ | 16 $\frac{3}{8}$ | 17 $\frac{1}{2}$ | 23 $\frac{11}{16}$ | 20 $\frac{1}{2}$ | 14 $\frac{1}{6}$ | 9 $\frac{1}{8}$ | 7 $\frac{1}{8}$ |
| AVPTC31C14* | 53 $\frac{7}{16}$ | 19 $\frac{1}{8}$ | 21 | 21 $\frac{13}{16}$ | 18 $\frac{3}{8}$ | 17 $\frac{11}{16}$ | 10 $\frac{13}{16}$ | 6 $\frac{13}{16}$ |
| AVPTC37B14* | 53 $\frac{7}{16}$ | 16 $\frac{3}{8}$ | 17 $\frac{1}{2}$ | 23 $\frac{11}{16}$ | 20 $\frac{1}{2}$ | 14 $\frac{1}{6}$ | 9 $\frac{1}{8}$ | 7 $\frac{1}{8}$ |
| AVPTC37C14* | 53 $\frac{7}{16}$ | 19 $\frac{1}{8}$ | 21 | 21 $\frac{13}{16}$ | 18 $\frac{3}{8}$ | 17 $\frac{11}{16}$ | 10 $\frac{13}{16}$ | 6 $\frac{13}{16}$ |
| AVPTC37D14* | 53 $\frac{7}{16}$ | 23 $\frac{5}{16}$ | 24 $\frac{1}{2}$ | 21 $\frac{1}{2}$ | 18 $\frac{5}{16}$ | 21 $\frac{3}{16}$ | 12 $\frac{3}{8}$ | 6 $\frac{1}{8}$ |
| AVPTC49D14* | 58 | 23 $\frac{5}{16}$ | 24 $\frac{1}{2}$ | 26 $\frac{3}{8}$ | 22 $\frac{3}{8}$ | 21 $\frac{3}{16}$ | 12 $\frac{3}{8}$ | 25 $\frac{1}{8}$ |
| AVPTC59C14* | 53 $\frac{7}{16}$ | 19 $\frac{1}{8}$ | 21 | 21 $\frac{13}{16}$ | 18 $\frac{3}{8}$ | 17 $\frac{11}{16}$ | 10 $\frac{13}{16}$ | 6 $\frac{13}{16}$ |
| AVPTC59D14* | 53 $\frac{7}{16}$ | 23 $\frac{5}{16}$ | 24 $\frac{1}{2}$ | 21 $\frac{1}{2}$ | 18 $\frac{5}{16}$ | 21 $\frac{3}{16}$ | 12 $\frac{3}{8}$ | 6 $\frac{1}{8}$ |
| AVPTC61D14* | 58 | 23 $\frac{5}{16}$ | 24 $\frac{1}{2}$ | 26 $\frac{3}{8}$ | 22 $\frac{3}{8}$ | 21 $\frac{3}{16}$ | 12 $\frac{3}{8}$ | 25 $\frac{1}{8}$ |

| MODEL | SPEED TAP | | 0.1 | 0.2 | 0.3 | 0.4 | 0.5 | 0.6 | 0.7 | 0.8 | 0.9 |
|------------------------------|-----------|------|------|------|------|------|------|------|------|------|------|
| AVPTC24B14 | A | Low | 415 | 415 | 410 | 410 | 405 | 405 | 400 | 400 | 400 |
| | B | Low | 575 | 570 | 565 | 560 | 560 | 555 | 555 | 550 | 550 |
| | C | Low | 685 | 670 | 660 | 650 | 645 | 635 | 630 | 625 | 620 |
| | D | Low | 795 | 780 | 765 | 755 | 745 | 735 | 725 | 720 | 715 |
| | A | High | 620 | 615 | 610 | 605 | 600 | 600 | 595 | 590 | 590 |
| | B | High | 865 | 850 | 835 | 825 | 815 | 805 | 795 | 790 | 785 |
| | C | High | 1005 | 990 | 970 | 960 | 945 | 935 | 920 | 915 | 910 |
| | D | High | 1165 | 1145 | 1125 | 1110 | 1100 | 1085 | 1070 | 1065 | 1055 |
| AVPTC25B14AA | A | Low | 460 | 445 | 445 | 425 | 410 | 400 | 400 | 400 | 395 |
| | B | Low | 620 | 610 | 600 | 605 | 600 | 590 | 585 | 575 | 565 |
| | C | Low | 700 | 695 | 690 | 690 | 690 | 690 | 675 | 665 | 660 |
| | D | Low | 750 | 750 | 745 | 745 | 740 | 730 | 720 | 710 | 700 |
| | A | High | 670 | 660 | 650 | 650 | 655 | 645 | 640 | 635 | 625 |
| | B | High | 870 | 865 | 855 | 850 | 840 | 840 | 840 | 830 | 835 |
| | C | High | 1000 | 990 | 980 | 975 | 965 | 965 | 955 | 955 | 945 |
| | D | High | 1105 | 1095 | 1085 | 1075 | 1065 | 1055 | 1050 | 1040 | 1030 |
| AVPTC29B14AA AVPTC37B14AA | A | Low | 390 | 385 | 375 | 360 | 350 | 335 | 325 | 315 | 305 |
| | B | Low | 545 | 540 | 545 | 540 | 540 | 540 | 535 | 530 | 525 |
| | C | Low | 610 | 620 | 630 | 635 | 630 | 625 | 620 | 625 | 625 |
| | D | Low | 720 | 735 | 740 | 740 | 735 | 730 | 725 | 715 | 705 |
| | A | High | 615 | 620 | 610 | 605 | 610 | 615 | 615 | 620 | 625 |
| | B | High | 790 | 795 | 795 | 795 | 795 | 790 | 800 | 795 | 785 |
| | C | High | 925 | 930 | 930 | 925 | 925 | 920 | 915 | 910 | 905 |
| | D | High | 1085 | 1085 | 1085 | 1080 | 1080 | 1075 | 1070 | 1065 | 1060 |
| AVPTC30C14 | A | Low | 465 | 455 | 440 | 430 | 425 | 415 | 405 | 400 | 395 |
| | B | Low | 615 | 610 | 605 | 600 | 595 | 595 | 590 | 585 | 585 |
| | C | Low | 755 | 745 | 740 | 735 | 730 | 725 | 720 | 720 | 715 |
| | D | Low | 900 | 890 | 885 | 880 | 875 | 870 | 865 | 865 | 860 |
| | A | High | 620 | 615 | 610 | 610 | 605 | 605 | 600 | 600 | 600 |
| | B | High | 850 | 840 | 835 | 830 | 825 | 820 | 815 | 815 | 810 |
| | C | High | 1030 | 1025 | 1020 | 1015 | 1010 | 1010 | 1005 | 1000 | 1000 |
| | D | High | 1245 | 1235 | 1225 | 1220 | 1210 | 1205 | 1200 | 1195 | 1195 |
| AVPTC31C14AA AVPTC37C14AA | A | Low | 610 | 600 | 590 | 590 | 600 | 605 | 610 | 610 | 610 |
| | B | Low | 710 | 710 | 705 | 705 | 695 | 690 | 685 | 675 | 665 |
| | C | Low | 845 | 845 | 845 | 825 | 815 | 810 | 800 | 805 | 795 |
| | D | Low | 915 | 910 | 910 | 900 | 850 | 840 | 830 | 820 | 825 |
| | A | High | 885 | 880 | 880 | 860 | 850 | 840 | 830 | 820 | 830 |
| | B | High | 1055 | 1055 | 1055 | 1040 | 1030 | 1015 | 1005 | 995 | 985 |
| | C | High | 1275 | 1270 | 1265 | 1260 | 1250 | 1240 | 1230 | 1215 | 1205 |
| | D | High | 1365 | 1360 | 1360 | 1330 | 1300 | 1290 | 1280 | 1270 | 1255 |
| AVPTC36C14 | A | Low | 515 | 505 | 500 | 485 | 465 | 460 | 450 | 425 | 410 |
| | B | Low | 715 | 705 | 700 | 685 | 675 | 670 | 660 | 640 | 630 |
| | C | Low | 950 | 935 | 930 | 910 | 895 | 890 | 875 | 855 | 835 |
| | D | Low | 1135 | 1125 | 1120 | 1105 | 1090 | 1085 | 1075 | 1055 | 1040 |
| | A | High | 740 | 730 | 725 | 710 | 695 | 690 | 680 | 660 | 645 |
| | B | High | 1015 | 1005 | 1000 | 985 | 965 | 960 | 950 | 925 | 910 |
| | C | High | 1345 | 1335 | 1330 | 1315 | 1300 | 1295 | 1290 | 1270 | 1255 |
| | D | High | 1615 | 1605 | 1600 | 1585 | 1570 | 1565 | 1555 | 1535 | 1520 |

Note: When applying a humidistat (normally closed), refer to the installation and operating instructions. The humidistat can adjust the cooling airflow to 85%.

| MODEL | SPEED TAP | | 0.1 | 0.2 | 0.3 | 0.4 | 0.5 | 0.6 | 0.7 | 0.8 | 0.9 |
|--------------|-----------|------|------|------|------|------|------|------|------|------|------|
| AVPTC37D14AA | A | Low | 605 | 605 | 605 | 575 | 560 | 545 | 525 | 510 | 500 |
| | B | Low | 730 | 725 | 725 | 700 | 700 | 695 | 680 | 660 | 645 |
| | C | Low | 820 | 820 | 820 | 800 | 760 | 750 | 740 | 720 | 700 |
| | D | Low | 870 | 885 | 940 | 885 | 875 | 865 | 850 | 835 | 835 |
| | A | High | 910 | 905 | 900 | 870 | 870 | 860 | 855 | 845 | 845 |
| | B | High | 1085 | 1080 | 1080 | 1060 | 1060 | 1055 | 1045 | 1035 | 1020 |
| | C | High | 1230 | 1225 | 1225 | 1205 | 1205 | 1200 | 1190 | 1185 | 1180 |
| | D | High | 1405 | 1405 | 1405 | 1370 | 1365 | 1355 | 1345 | 1335 | 1330 |
| AVPTC42D14 | A | Low | 600 | 580 | 560 | 545 | 535 | 520 | 505 | 500 | 490 |
| | B | Low | 795 | 780 | 765 | 750 | 740 | 730 | 720 | 715 | 710 |
| | C | Low | 1025 | 1010 | 995 | 985 | 970 | 960 | 950 | 945 | 940 |
| | D | Low | 1250 | 1235 | 1225 | 1215 | 1210 | 1200 | 1195 | 1190 | 1185 |
| | A | High | 835 | 815 | 800 | 790 | 780 | 765 | 755 | 750 | 745 |
| | B | High | 1115 | 1105 | 1090 | 1080 | 1070 | 1065 | 1055 | 1050 | 1045 |
| | C | High | 1445 | 1430 | 1420 | 1410 | 1405 | 1395 | 1390 | 1385 | 1380 |
| | D | High | 1775 | 1760 | 1750 | 1740 | 1735 | 1725 | 1720 | 1715 | 1710 |
| AVPTC48C14 | A | Low | 510 | 505 | 500 | 490 | 485 | 480 | 475 | 465 | 455 |
| | B | Low | 710 | 705 | 700 | 690 | 680 | 680 | 670 | 660 | 650 |
| | C | Low | 940 | 935 | 930 | 920 | 910 | 910 | 905 | 890 | 880 |
| | D | Low | 1165 | 1160 | 1160 | 1155 | 1150 | 1145 | 1140 | 1135 | 1125 |
| | A | High | 735 | 730 | 725 | 715 | 705 | 700 | 695 | 685 | 675 |
| | B | High | 1010 | 1005 | 1000 | 990 | 985 | 980 | 975 | 965 | 955 |
| | C | High | 1340 | 1335 | 1330 | 1320 | 1310 | 1310 | 1305 | 1290 | 1280 |
| | D | High | 1675 | 1665 | 1660 | 1645 | 1635 | 1630 | 1620 | 1605 | 1590 |
| AVPTC48D14 | A | Low | 910 | 910 | 900 | 895 | 885 | 880 | 875 | 870 | 850 |
| | B | Low | 1050 | 1045 | 1035 | 1030 | 1025 | 1020 | 1015 | 1010 | 1010 |
| | C | Low | 1155 | 1145 | 1140 | 1135 | 1130 | 1125 | 1120 | 1120 | 1115 |
| | D | Low | 1215 | 1210 | 1200 | 1195 | 1190 | 1185 | 1180 | 1175 | 1170 |
| | A | High | 1370 | 1360 | 1350 | 1345 | 1340 | 1330 | 1325 | 1325 | 1320 |
| | B | High | 1570 | 1560 | 1550 | 1545 | 1535 | 1530 | 1525 | 1520 | 1515 |
| | C | High | 1720 | 1710 | 1700 | 1695 | 1685 | 1680 | 1670 | 1670 | 1665 |
| | D | High | 1840 | 1820 | 1800 | 1785 | 1775 | 1760 | 1745 | 1740 | 1735 |
| AVPTC49D14AA | A | Low | 795 | 815 | 820 | 820 | 810 | 800 | 785 | 785 | 770 |
| | B | Low | 870 | 890 | 895 | 895 | 890 | 875 | 865 | 850 | 850 |
| | C | Low | 985 | 990 | 995 | 995 | 990 | 980 | 970 | 955 | 940 |
| | D | Low | 1040 | 1055 | 1055 | 1055 | 1045 | 1035 | 1025 | 1020 | 1005 |
| | A | High | 1195 | 1195 | 1195 | 1200 | 1195 | 1185 | 1175 | 1165 | 1155 |
| | B | High | 1325 | 1320 | 1320 | 1315 | 1315 | 1305 | 1295 | 1285 | 1275 |
| | C | High | 1460 | 1460 | 1455 | 1455 | 1455 | 1450 | 1440 | 1430 | 1420 |
| | D | High | 1520 | 1530 | 1530 | 1530 | 1530 | 1525 | 1515 | 1510 | 1495 |
| AVPTC59C14AA | A | Low | 635 | 620 | 610 | 600 | 600 | 600 | 600 | 600 | 600 |
| | B | Low | 790 | 805 | 810 | 810 | 805 | 805 | 795 | 810 | 800 |
| | C | Low | 930 | 940 | 940 | 935 | 930 | 925 | 920 | 915 | 905 |
| | D | Low | 1065 | 1065 | 1070 | 1065 | 1060 | 1050 | 1045 | 1035 | 1030 |
| | A | High | 870 | 880 | 875 | 875 | 870 | 865 | 860 | 860 | 845 |
| | B | High | 1230 | 1230 | 1225 | 1220 | 1210 | 1205 | 1200 | 1190 | 1180 |
| | C | High | 1420 | 1410 | 1410 | 1405 | 1395 | 1385 | 1380 | 1380 | 1370 |
| | D | High | 1615 | 1600 | 1595 | 1595 | 1585 | 1580 | 1570 | 1565 | 1555 |

Note: When applying a humidistat (normally closed), refer to the installation and operating instructions. The humidistat can adjust the cooling airflow to 85%.

| MODEL | SPEED TAP | | 0.1 | 0.2 | 0.3 | 0.4 | 0.5 | 0.6 | 0.7 | 0.8 | 0.9 |
|--------------|-----------|------|------|------|------|------|------|------|------|------|------|
| AVPTC59D14AA | A | Low | 1030 | 1035 | 1040 | 1040 | 1030 | 1025 | 1015 | 995 | 970 |
| | B | Low | 1260 | 1260 | 1260 | 1260 | 1260 | 1250 | 1245 | 1235 | 1225 |
| | C | Low | 1330 | 1335 | 1330 | 1330 | 1325 | 1320 | 1315 | 1305 | 1295 |
| | D | Low | 1395 | 1395 | 1395 | 1390 | 1390 | 1385 | 1375 | 1365 | 1355 |
| | A | High | 1450 | 1445 | 1445 | 1435 | 1430 | 1425 | 1420 | 1410 | 1395 |
| | B | High | 1795 | 1790 | 1790 | 1785 | 1775 | 1765 | 1760 | 1750 | 1745 |
| | C | High | 1890 | 1890 | 1890 | 1880 | 1870 | 1865 | 1855 | 1850 | 1840 |
| | D | High | 1995 | 1995 | 1990 | 1985 | 1985 | 1975 | 1965 | 1955 | 1945 |
| AVPTC60D14 | A | Low | 1205 | 1205 | 1210 | 1205 | 1205 | 1200 | 1195 | 1195 | 1195 |
| | B | Low | 1375 | 1370 | 1365 | 1360 | 1360 | 1355 | 1355 | 1350 | 1350 |
| | C | Low | 1445 | 1445 | 1450 | 1445 | 1445 | 1440 | 1440 | 1440 | 1435 |
| | D | Low | 1535 | 1530 | 1525 | 1520 | 1520 | 1515 | 1510 | 1510 | 1510 |
| | A | High | 1615 | 1615 | 1610 | 1610 | 1605 | 1605 | 1600 | 1600 | 1600 |
| | B | High | 1825 | 1820 | 1815 | 1810 | 1810 | 1805 | 1805 | 1805 | 1800 |
| | C | High | 1930 | 1925 | 1920 | 1915 | 1915 | 1910 | 1905 | 1905 | 1900 |
| | D | High | 2040 | 2030 | 2025 | 2020 | 2015 | 2010 | 2005 | 2005 | 2000 |
| AVPTC61D14AA | A | Low | 1080 | 1085 | 1080 | 1085 | 1080 | 1075 | 1070 | 1065 | 1055 |
| | B | Low | 1200 | 1200 | 1210 | 1210 | 1210 | 1210 | 1205 | 1205 | 1200 |
| | C | Low | 1290 | 1290 | 1280 | 1275 | 1280 | 1280 | 1270 | 1265 | 1265 |
| | D | Low | 1360 | 1355 | 1350 | 1355 | 1350 | 1345 | 1340 | 1340 | 1330 |
| | A | High | 1630 | 1630 | 1630 | 1625 | 1620 | 1615 | 1610 | 1600 | 1590 |
| | B | High | 1820 | 1820 | 1820 | 1815 | 1805 | 1795 | 1785 | 1780 | 1770 |
| | C | High | 1935 | 1930 | 1925 | 1920 | 1905 | 1900 | 1890 | 1875 | 1865 |
| | D | High | 2035 | 2030 | 2025 | 2020 | 2005 | 1995 | 1985 | 1960 | 1955 |

Note: When applying a humidistat (normally closed), refer to the installation and operating instructions. The humidistat can adjust the cooling airflow to 85%.

| HTR kW | 9 | 10 | 11 | AVPTC 24B14 | AVPTC 25B14 | AVPTC 29B14 | AVPTC 30C14 | AVPTC 31C14 | AVPTC 36C14 | AVPTC 37B14 | AVPTC 37C14 | AVPTC 37D14 |
|-----------|-----|-----|-----|----------------|----------------|----------------|----------------|----------------|----------------|----------------|----------------|----------------|
| 3 | ON | ON | ON | 730 | 550 | 550 | 730 | --- | NR | 550 | --- | --- |
| 5 | ON | ON | OFF | 780 | 650 | 650 | 780 | 850 | 850 | 650 | 850 | 1240 |
| 6 | ON | OFF | ON | 850 | 700 | 700 | 850 | 900 | 900 | 700 | 900 | 1240 |
| 8 | ON | OFF | OFF | 950 | 800 | 800 | 950 | 1000 | 1000 | 800 | 1000 | 1240 |
| 10 | OFF | ON | ON | 1025 | 850 | 875 | 1025 | 1170 | 1200 | 875 | 1170 | 1240 |
| 15 | OFF | ON | OFF | NR | 875 | 875 | NR | 1345 | 1440 | 1050 | 1345 | 1520 |
| 19* | OFF | OFF | ON | NR | --- | --- | NR | 1345 | 1500 | --- | 1345 | --- |
| 20 | | | | NR | --- | --- | NR | --- | 1500 | --- | --- | 1520 |
| 21 or 25* | OFF | OFF | OFF | NR | --- | --- | NR | --- | NR | --- | --- | --- |

Note: Airflow data shown applies to the electric heat only in either legacy mode or communicating mode operation

--- indicates Not Rated

* Within thermostat user menu, CTK0* communicating thermostat will display 20kW for OFF- OFF- ON dipswitch selection, 21kW for OFF-OFF-OFF dipswitch selection.

† For match up with a 2 ton outdoor unit: Heater kit application shall not exceed 10 kW.
Airflow for 5 kW up to 10 kW heater kits shall be set to 850 cfm speed tap of ON-ON-ON.

†† For match up with a 3 ton outdoor unit: Heater kit application shall not exceed 15 kW.
Airflow for 5 kW up to 15 kW heater kits shall be set to 1300 cfm speed tap of ON-OFF-ON.

††† For match up with a 3.5 ton outdoor unit: Heater kit application shall not exceed 20 kW.
Airflow for 5 kW up to 20 kW heater kits shall be set to 1500 cfm speed tap of ON-OFF-OFF

** 3 kW heater kit is not applicable for this indoor application.

| HTR kW | 9 | 10 | 11 | AVPTC 42D14† | AVPTC 48C14 | AVPTC 48D14†† | AVPTC 49D14 †† | AVPTC 59C14 | AVPTC C59D14 | AVPTC 60D14††† | AVPTC 61D14 ††† |
|-----------|-----|-----|-----|-----------------|----------------|------------------|-------------------|----------------|-----------------|-------------------|--------------------|
| 3 | ON | ON | ON | 850** | NR | NR | --- | --- | --- | NR | --- |
| 5 | ON | ON | OFF | 1400 | 850 | 1400 | 1250 | 1170 | 1240 | 1620 | 1250 |
| 6 | ON | OFF | ON | 1630 | 900 | 1630 | 1300 | 1170 | 1240 | 1670 | 1300 |
| 8 | ON | OFF | OFF | 1630 | 1000 | 1630 | 1500 | 1170 | 1240 | 1720 | 1500 |
| 10 | OFF | ON | ON | 1670 | 1200 | 1670 | 1550 | 1170 | 1240 | 1750 | 1550 |
| 15 | OFF | ON | OFF | 1720 | 1440 | 1720 | 1720 | 1345 | 1520 | 1780 | 1780 |
| 19* | OFF | OFF | ON | NR | 1500 | NR | --- | 1345 | --- | NR | --- |
| 20 | | | | 1800 | 1500 | 1815 | --- | --- | 1520 | 1850 | 1850 |
| 21 or 25* | OFF | OFF | OFF | NR | NR | 1850 | --- | --- | --- | 1850 | 1850 |

Note: Airflow data shown applies to the electric heat only in either legacy mode or communicating mode operation

--- indicates Not Rated

* Within thermostat user menu, CTK0* communicating thermostat will display 20kW for OFF- OFF- ON dipswitch selection, 21kW for OFF-OFF-OFF dipswitch selection.

† For match up with a 2 ton outdoor unit: Heater kit application shall not exceed 10 kW.
Airflow for 5 kW up to 10 kW heater kits shall be set to 850 cfm speed tap of ON-ON-ON.

†† For match up with a 3 ton outdoor unit: Heater kit application shall not exceed 15 kW.
Airflow for 5 kW up to 15 kW heater kits shall be set to 1300 cfm speed tap of ON-OFF-ON.

††† For match up with a 3.5 ton outdoor unit: Heater kit application shall not exceed 20 kW.
Airflow for 5 kW up to 20 kW heater kits shall be set to 1500 cfm speed tap of ON-OFF-OFF

** 3 kW heater kit is not applicable for this indoor application.

| MODELS | CIRCUIT 1 | | | CIRCUIT 2 | | | SINGLE-POINT KIT | |
|---------------------|-----------|------------------|------------------|-----------|------------------|------------------|------------------|------------------|
| | AMPS | MCA ¹ | MOP ² | AMPS | MCA ¹ | MOP ² | MCA ¹ | MOP ² |
| AVPTC24B14AA | 0.0/0.0 | 4.9/4.9 | 15/15 | --- | --- | --- | --- | --- |
| HKS*03XC* | 10.8/12.5 | 18/21 | 20/25 | --- | --- | --- | --- | --- |
| HKS*05XC* | 17.3/20.0 | 27/30 | 30/30 | --- | --- | --- | --- | --- |
| HKS*06XC* | 21.7/25.0 | 32/36 | 35/40 | --- | --- | --- | --- | --- |
| HKS*08XC* | 28.9/33.3 | 41/47 | 45/50 | --- | --- | --- | --- | --- |
| HKS*10XC* | 34.7/40.0 | 48/55 | 50/60 | --- | --- | --- | --- | --- |
| AVPTC25B14AA | 0/0 | 4.9/4.9 | 15/15 | --- | --- | --- | --- | --- |
| HKS*03XC* | 10.8/12.5 | 18.4/21 | 20/25 | --- | --- | --- | --- | --- |
| HKS*05XC* | 17.3/20 | 27/29.9 | 30/30 | --- | --- | --- | --- | --- |
| HKS*06XC* | 21.7/25 | 32/36.1 | 35/40 | --- | --- | --- | --- | --- |
| HKS*08XC* | 28.9/33.3 | 41/46.5 | 45/50 | --- | --- | --- | --- | --- |
| HKS*10XC* | 34.7/40 | 48/54.9 | 50/60 | --- | --- | --- | --- | --- |
| HKS*15*## | 34.7/40 | 48/54.9 | 50/60 | 17.3/20 | 21.7/25 | 25/25 | 69.9/79.9 | 70/80 |
| AVPTC29B14AA | 0/0 | 6.5/6.5 | 15/15 | --- | --- | --- | --- | --- |
| HKS*03XC* | 10.8/12.5 | 20/22.1 | 20/25 | --- | --- | --- | --- | --- |
| HKS*05XC* | 17.3/20 | 28.2/32 | 30/35 | --- | --- | --- | --- | --- |
| HKS*06XC* | 21.7/25 | 33.6/38 | 35/40 | --- | --- | --- | --- | --- |
| HKS*08XC* | 28.9/33.3 | 42.6/48 | 45/50 | --- | --- | --- | --- | --- |
| HKS*10XC* | 34.7/40 | 49.8/57 | 50/60 | --- | --- | --- | --- | --- |
| HKS*15*## | 34.7/40 | 49.8/57 | 50/60 | 17.3/20 | 21.7/25 | 25/25 | 71.5/81.5 | 80/90 |
| AVPTC30C14AA | 0.0/0.0 | 4.9/4.9 | 15/15 | --- | --- | --- | --- | --- |
| HKS*03XC* | 10.8/12.5 | 18/21 | 20/25 | --- | --- | --- | --- | --- |
| HKS*05XC* | 17.3/20.0 | 27/30 | 30/30 | --- | --- | --- | --- | --- |
| HKS*06XC* | 21.7/25.0 | 32/36 | 35/40 | --- | --- | --- | --- | --- |
| HKS*08XC* | 28.9/33.3 | 41/47 | 45/50 | --- | --- | --- | --- | --- |
| HKS*10XC* | 34.7/40.0 | 48/55 | 50/60 | --- | --- | --- | --- | --- |
| AVPTC31C14AA | 0/0 | 6.5/6.5 | 15/15 | --- | --- | --- | --- | --- |
| HKS*03XC* | --- | --- | --- | --- | --- | --- | --- | --- |
| HKS*05XC* | 17.3/20 | 28.2/32 | 30/35 | --- | --- | --- | --- | --- |
| HKS*06XC* | 21.7/25 | 33.6/38 | 35/40 | --- | --- | --- | --- | --- |
| HKS*08XC* | 28.9/33.3 | 42.6/48 | 45/50 | --- | --- | --- | --- | --- |
| HKS*10XC* | 34.7/40 | 49.8/57 | 50/60 | --- | --- | --- | --- | --- |
| HKS*15*## | 34.7/40 | 49.8/57 | 50/60 | 17.3/20 | 21.7/25 | 25/25 | 71.5/81.5 | 80/90 |
| HKSC19C*## | 34.7/40 | 49.8/57 | 50/60 | 34.7/40 | 43.3/50 | 45/50 | 93.2/106.5 | 100/110 |
| HKS*15XF* | 0/0 | 6.5/6.5 | 15/15 | 30/34.6 | 37.5/43 | 40/45 | --- | --- |
| AVPTC36C14AA | 0.0/0.0 | 6.5/6.5 | 15/15 | --- | --- | --- | --- | --- |
| HKS*03XC* | 10.8/12.5 | 20/22 | 20/25 | --- | --- | --- | --- | --- |
| HKS*05XC* | 17.3/20.0 | 28/32 | 30/35 | --- | --- | --- | --- | --- |
| HKS*06XC* | 21.7/25.0 | 34/38 | 35/40 | --- | --- | --- | --- | --- |
| HKS*08XC* | 28.9/33.3 | 43/48 | 45/50 | --- | --- | --- | --- | --- |
| HKS*10XC* | 34.7/40.0 | 50/57 | 50/60 | --- | --- | --- | --- | --- |
| HKSC15*## | 34.7/40.0 | 50/57 | 50/60 | 17.3/20.0 | 22/25 | 25/25 | 72/82 | 80/90 |
| HKSC19C#* | 34.7/40.0 | 50/57 | 50/60 | 34.7/40 | 43/50 | 45/50 | 93/107 | 100/110 |
| HKSC15XF* | 0.0/0.0 | 6.5/6.5 | 15/15 | 30.0/34.6 | 38/43 | 40/45 | --- | --- |
| HKSC20XF* | 0.0/0.0 | 6.5/6.5 | 15/15 | 37.5/43.3 | 47/54 | 50/60 | --- | --- |
| AVPTC37B14AA | 0/0 | 6.5/6.5 | 15/15 | --- | --- | --- | --- | --- |
| HKS*03XC* | 10.8/12.5 | 20/22.1 | 20/25 | --- | --- | --- | --- | --- |
| HKS*05XC* | 17.3/20 | 28.2/32 | 30/35 | --- | --- | --- | --- | --- |
| HKS*06XC* | 21.7/25 | 33.6/38 | 35/40 | --- | --- | --- | --- | --- |
| HKS*08XC* | 28.9/33.3 | 42.6/48 | 45/50 | --- | --- | --- | --- | --- |
| HKS*10XC* | 34.7/40 | 49.8/57 | 50/60 | --- | --- | --- | --- | --- |
| HKS*15*## | 34.7/40 | 49.8/57 | 50/60 | 17.3/20 | 21.7/25 | 25/25 | 71.5/81.5 | 80/90 |

| MODELS | CIRCUIT 1 | | | CIRCUIT 2 | | | SINGLE-POINT KIT | |
|---------------------|-----------|------------------|------------------|-----------|------------------|------------------|------------------|------------------|
| | AMPS | MCA ¹ | MOP ² | AMPS | MCA ¹ | MOP ² | MCA ¹ | MOP ² |
| AVPTC37C14AA | 0/0 | 6.5/6.5 | 15/15 | --- | --- | --- | --- | --- |
| HKS*03XC* | --- | --- | --- | --- | --- | --- | --- | --- |
| HKS*05XC* | 17.3/20 | 28.2/32 | 30/35 | --- | --- | --- | --- | --- |
| HKS*06XC* | 21.7/25 | 33.6/38 | 35/40 | --- | --- | --- | --- | --- |
| HKS*08XC* | 28.9/33.3 | 42.6/48 | 45/50 | --- | --- | --- | --- | --- |
| HKS*10XC* | 34.7/40 | 49.8/57 | 50/60 | --- | --- | --- | --- | --- |
| HKS*15*## | 34.7/40 | 49.8/57 | 50/60 | 17.3/20 | 21.7/25 | 25/25 | 71.5/81.5 | 80/90 |
| HKSC19C*## | 34.7/40 | 49.8/57 | 50/60 | 34.7/40 | 43.3/50 | 45/50 | 93.2/106.5 | 100/110 |
| HKS*15XF* | 0/0 | 6.5/6.5 | 15/15 | 30/34.6 | 37.5/43 | 40/45 | --- | --- |
| AVPTC37D14AA | 0/0 | 6.5/6.5 | 15/15 | --- | --- | --- | --- | --- |
| HKS*03XC* | --- | --- | --- | --- | --- | --- | --- | --- |
| HKS*05XC* | 17.3/20 | 28.2/32 | 30/35 | --- | --- | --- | --- | --- |
| HKS*06XC* | 21.7/25 | 33.6/38 | 35/40 | --- | --- | --- | --- | --- |
| HKS*08XC* | 28.9/33.3 | 42.6/48 | 45/50 | --- | --- | --- | --- | --- |
| HKS*10XC* | 34.7/40 | 49.8/57 | 50/60 | --- | --- | --- | --- | --- |
| HKS*15*## | 34.7/40 | 49.8/57 | 50/60 | 17.3/20 | 21.7/25 | 25/25 | 71.5/81.5 | 80/90 |
| HKSC20D#C* | 34.7/40 | 49.8/57 | 50/60 | 34.7/40 | 43.3/50 | 45/50 | 93.2/106.5 | 100/110 |
| HKS*15XF* | 0/0 | 6.5/6.5 | 15/15 | 30/34.6 | 37.5/43 | 40/45 | --- | --- |
| HKS*20XF* | 0/0 | 6.5/6.5 | 15/15 | 37.5/43 | 47/54 | 50/60 | --- | --- |
| AVPTC42D14AA | 0.0/0.0 | 6.5/6.5 | 15/15 | --- | --- | --- | --- | --- |
| HKS*03XC* | 10.8/12.5 | 20/22 | 20/25 | --- | --- | --- | --- | --- |
| HKS*05XC* | 17.3/20.0 | 28/32 | 30/35 | --- | --- | --- | --- | --- |
| HKS*06XC* | 21.7/25.0 | 34/38 | 35/40 | --- | --- | --- | --- | --- |
| HKS*08XC* | 28.9/33.3 | 43/48 | 45/50 | --- | --- | --- | --- | --- |
| HKS*10XC* | 34.7/40.0 | 50/57 | 50/60 | --- | --- | --- | --- | --- |
| HKSC15*## | 34.7/40.0 | 50/57 | 50/60 | 17.3/20.0 | 22/25 | 25/25 | 72/82 | 80/90 |
| HKSC20D#* | 34.7/40.0 | 50/57 | 50/60 | 34.7/40 | 43/50 | 45/50 | 93/107 | 100/110 |
| HKSC15XF* | 0.0/0.0 | 6.5/6.5 | 15/15 | 30.0/34.6 | 38/43 | 40/45 | --- | --- |
| HKSC20XF* | 0.0/0.0 | 6.5/6.5 | 15/15 | 37.5/43.3 | 47/54 | 50/60 | --- | --- |
| AVPTC48C14AA | 0.0/0.0 | 6.5/6.5 | 15/15 | --- | --- | --- | --- | --- |
| HKS*03XC* | 10.8/12.5 | 20/22 | 20/25 | --- | --- | --- | --- | --- |
| HKS*05XC* | 17.3/20.0 | 28/32 | 30/35 | --- | --- | --- | --- | --- |
| HKS*06XC* | 21.7/25.0 | 34/38 | 35/40 | --- | --- | --- | --- | --- |
| HKS*08XC* | 28.9/33.3 | 43/48 | 45/50 | --- | --- | --- | --- | --- |
| HKS*10XC* | 34.7/40.0 | 50/57 | 50/60 | --- | --- | --- | --- | --- |
| HKSC15*## | 34.7/40.0 | 50/57 | 50/60 | 17.3/20.0 | 22/25 | 25/25 | 72/82 | 80/90 |
| HKSC19C#* | 34.7/40.0 | 50/57 | 50/60 | 34.7/40 | 43/50 | 45/50 | 93/107 | 100/110 |
| HKSC15XF* | 0.0/0.0 | 6.5/6.5 | 15/15 | 30.0/34.6 | 38/43 | 40/45 | --- | --- |
| HKSC20XF* | 0.0/0.0 | 6.5/6.5 | 15/15 | 37.5/43.3 | 47/54 | 50/60 | --- | --- |
| AVPTC48D14AA | 0.0/0.0 | 6.5/6.5 | 15/15 | --- | --- | --- | --- | --- |
| HKS*03XC* | 10.8/12.5 | 20/22 | 20/25 | --- | --- | --- | --- | --- |
| HKS*05XC* | 17.3/20.0 | 28/32 | 30/35 | --- | --- | --- | --- | --- |
| HKS*06XC* | 21.7/25.0 | 34/38 | 35/40 | --- | --- | --- | --- | --- |
| HKS*08XC* | 28.9/33.3 | 43/48 | 45/50 | --- | --- | --- | --- | --- |
| HKS*10XC* | 34.7/40.0 | 50/57 | 50/60 | --- | --- | --- | --- | --- |
| HKSC15*## | 34.7/40.0 | 50/57 | 50/60 | 17.3/20.0 | 22/25 | 25/25 | 72/82 | 80/90 |
| HKSC20D#* | 34.7/40.0 | 50/57 | 50/60 | 34.7/40 | 43/50 | 45/50 | 93/107 | 100/110 |
| HKSC15XF* | 0.0/0.0 | 6.5/6.5 | 15/15 | 30.0/34.6 | 38/43 | 40/45 | --- | --- |
| HKSC20XF* | 0.0/0.0 | 6.5/6.5 | 15/15 | 37.5/43.3 | 47/54 | 50/60 | --- | --- |
| HKSC25DC* | 52.0/60.0 | 74/84 | 80/90 | 34.7/40.0 | 43/50 | 45/50 | 117/134 | 125/150 |

HEAT KIT DATA (CONT.)

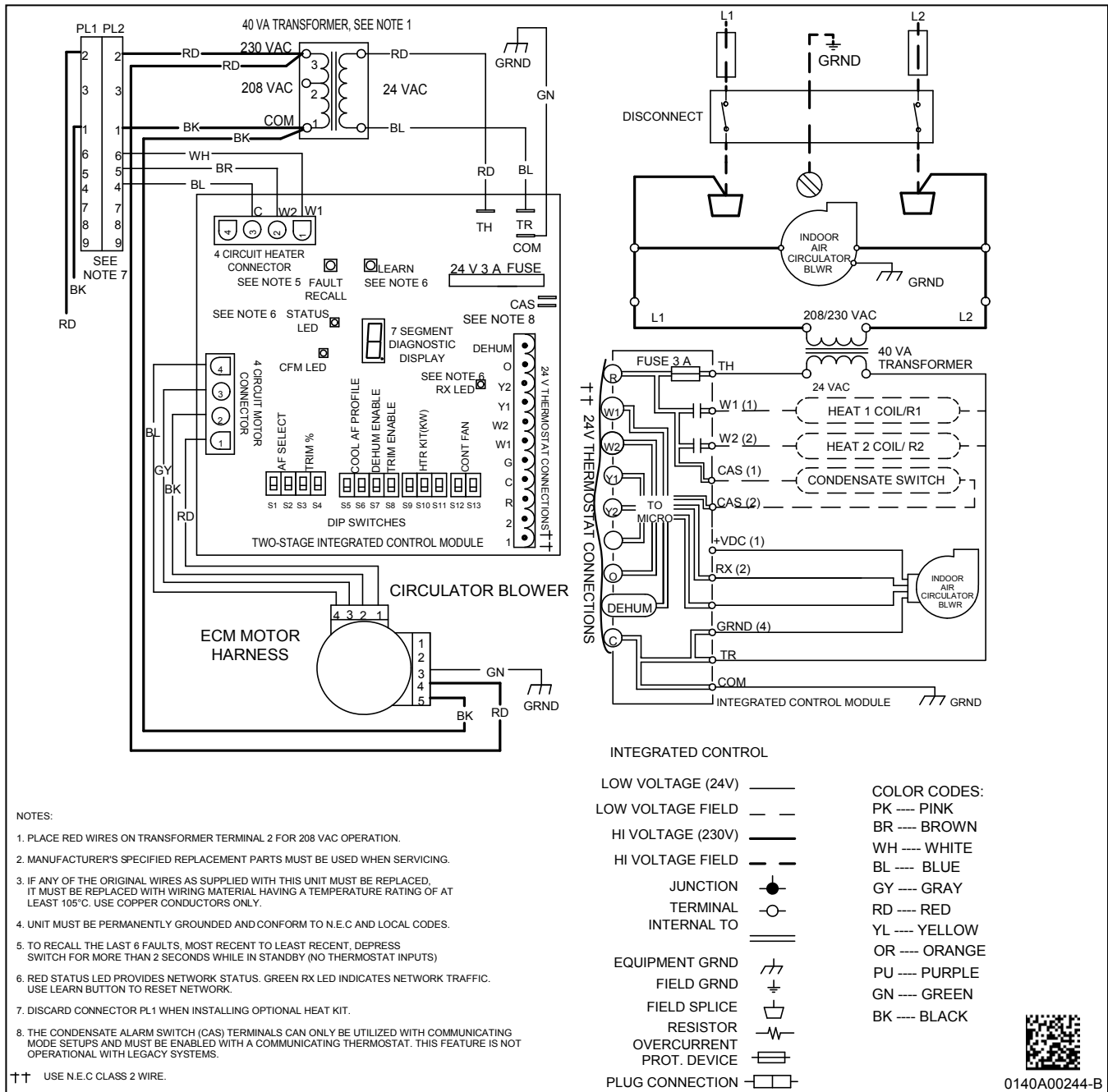
| MODELS | CIRCUIT 1 | | | CIRCUIT 2 | | | SINGLE-POINT KIT | |
|---------------------|-----------|------------------|------------------|-----------|------------------|------------------|------------------|------------------|
| | AMPS | MCA ¹ | MOP ² | AMPS | MCA ¹ | MOP ² | MCA ¹ | MOP ² |
| AVPTC49D14AA | 0/0 | 6.5/6.5 | 15/15 | --- | --- | --- | --- | --- |
| HKS*03XC* | --- | --- | --- | --- | --- | --- | --- | --- |
| HKS*05XC* | 17.3/20 | 28.2/32 | 30/35 | --- | --- | --- | --- | --- |
| HKS*06XC* | 21.7/25 | 33.6/38 | 35/40 | --- | --- | --- | --- | --- |
| HKS*08XC* | 28.9/33.3 | 42.6/48 | 45/50 | --- | --- | --- | --- | --- |
| HKS*10XC* | 34.7/40 | 49.8/57 | 50/60 | --- | --- | --- | --- | --- |
| HKS*15*## | 34.7/40 | 49.8/57 | 50/60 | 17.3/20 | 21.7/25 | 25/25 | 71.5/81.5 | 80/90 |
| HKSC20D#C* | --- | --- | --- | --- | --- | --- | --- | --- |
| HKS*15XF* | --- | --- | --- | --- | --- | --- | --- | --- |
| HKS*20XF* | --- | --- | --- | --- | --- | --- | --- | --- |
| HKSC25DC* | --- | --- | --- | --- | --- | --- | --- | --- |
| AVPTC59C14AA | 0/0 | 8.6/8.6 | 15/15 | --- | --- | --- | --- | --- |
| HKS*03XC* | --- | --- | --- | --- | --- | --- | --- | --- |
| HKS*05XC* | 17.3/20 | 30.3/34 | 35/35 | --- | --- | --- | --- | --- |
| HKS*06XC* | 21.7/25 | 36/39.9 | 40/40 | --- | --- | --- | --- | --- |
| HKS*08XC* | 28.9/33.3 | 45/50.3 | 45/60 | --- | --- | --- | --- | --- |
| HKS*10XC* | 34.7/40 | 52/58.6 | 60/60 | --- | --- | --- | --- | --- |
| HKSC15*## | 34.7/40 | 52/58.6 | 60/60 | 17.3/20 | 21.7/25 | 25/25 | 73.6/83.6 | 80/90 |
| HKSC19C#* | 34.7/40 | 52/58.6 | 60/60 | 34.7/40 | 43.3/50 | 45/50 | 95.3/108.6 | 100/110 |
| HKSC15XF* | 0/0 | 8.6/8.6 | 15/15 | 30/34.6 | 37.5/43 | 40/45 | --- | --- |
| HKSC20XF* | --- | --- | --- | --- | --- | --- | --- | --- |
| AVPTC59D14AA | 0/0 | 8.6/8.6 | 15/15 | --- | --- | --- | --- | --- |
| HKS*03XC* | --- | --- | --- | --- | --- | --- | --- | --- |
| HKS*05XC* | 17.3/20 | 30.3/34 | 35/35 | --- | --- | --- | --- | --- |
| HKS*06XC* | 21.7/25 | 36/39.9 | 40/40 | --- | --- | --- | --- | --- |
| HKS*08XC* | 28.9/33.3 | 45/50.3 | 45/60 | --- | --- | --- | --- | --- |
| HKS*10XC* | 34.7/40 | 52/58.6 | 60/60 | --- | --- | --- | --- | --- |
| HKS*15*## | 34.7/40 | 52/58.6 | 60/60 | 17.3/20 | 21.7/25 | 25/25 | 73.6/83.6 | 80/90 |
| HKSC20D#C* | 34.7/40 | 52/58.6 | 60/60 | 34.7/40 | 43.3/50 | 45/50 | 95.3/108.6 | 100/110 |
| HKS*15XF* | 0/0 | 8.6/8.6 | 15/15 | 30/34.6 | 37.5/43 | 40/45 | --- | --- |
| HKS*20XF* | 0/0 | 8.6/8.6 | 15/15 | 37.5/43 | 47/54 | 50/60 | --- | --- |
| AVPTC60D14AA | 0.0/0.0 | 8.6/8.6 | 15/15 | --- | --- | --- | --- | --- |
| HKS*03XC* | 10.8/12.5 | 22/24 | 25/25 | --- | --- | --- | --- | --- |
| HKS*05XC* | 17.3/20.0 | 30/34 | 35/35 | --- | --- | --- | --- | --- |
| HKS*06XC* | 21.7/25.0 | 36/40 | 40/40 | --- | --- | --- | --- | --- |
| HKS*08XC* | 28.9/33.3 | 45/50 | 45/60 | --- | --- | --- | --- | --- |
| HKS*10XC* | 34.7/40.0 | 52/59 | 60/60 | --- | --- | --- | --- | --- |
| HKSC15*## | 34.7/40.0 | 52/59 | 60/60 | 17.3/20 | 22/25 | 25/25 | 74/84 | 80/90 |
| HKSC20D#* | 34.7/40.0 | 52/59 | 60/60 | 34.7/40.0 | 43/50 | 45/50 | 95/109 | 100/110 |
| HKSC15XF* | 0.0/0.0 | 8.6/8.6 | 15/15 | 30.0/34.6 | 38/43 | 40/45 | --- | --- |
| HKSC20XF* | 0.0/0.0 | 8.6/8.6 | 15/15 | 37.5/43.3 | 47/54 | 50/60 | --- | --- |
| HKSC25DC* | 52.0/60.0 | 74/84 | 80/90 | 35/40 | 43/50 | 45/50 | 117/134 | 125/150 |
| AVPTC61D14AA | 0/0 | 8.6/8.6 | 15/15 | --- | --- | --- | --- | --- |
| HKS*03XC* | --- | --- | --- | --- | --- | --- | --- | --- |
| HKS*05XC* | 17.3/20 | 30.3/34 | 35/35 | --- | --- | --- | --- | --- |
| HKS*06XC* | 21.7/25 | 36/39.9 | 40/40 | --- | --- | --- | --- | --- |
| HKS*08XC* | 28.9/33.3 | 45/50.3 | 45/60 | --- | --- | --- | --- | --- |
| HKS*10XC* | 34.7/40 | 52/58.6 | 60/60 | --- | --- | --- | --- | --- |
| HKS*15*## | 34.7/40 | 52/58.6 | 60/60 | 17.3/20 | 21.7/25 | 25/25 | 73.6/83.6 | 80/90 |
| HKSC20D#C* | 34.7/40 | 52/58.6 | 60/60 | 34.7/40 | 43.3/50 | 45/50 | 95.3/108.6 | 100/110 |
| HKS*15XF* | 0/0 | 8.6/8.6 | 15/15 | 30/34.6 | 37.5/43 | 40/45 | --- | --- |
| HKS*20XF* | 0/0 | 8.6/8.6 | 15/15 | 37.5/43 | 47/54 | 50/60 | --- | --- |
| HKSC25DC* | 52/60 | 73.6/84 | 80/90 | 34.7/40 | 43.3/50 | 45/50 | 117/133.6 | 125/150 |

¹ Minimum Circuit Ampacity (Heater Amps + Motor Amps) X 1.25

² Maximum Overcurrent Protection = 2.25 X Motor Amps + Heater Amps

[^] Circuit 1: Single-phase for Air Handlers Circuit 2: Three-phase for HKR3 Heater Kits

* Revision level that may or may not be designated



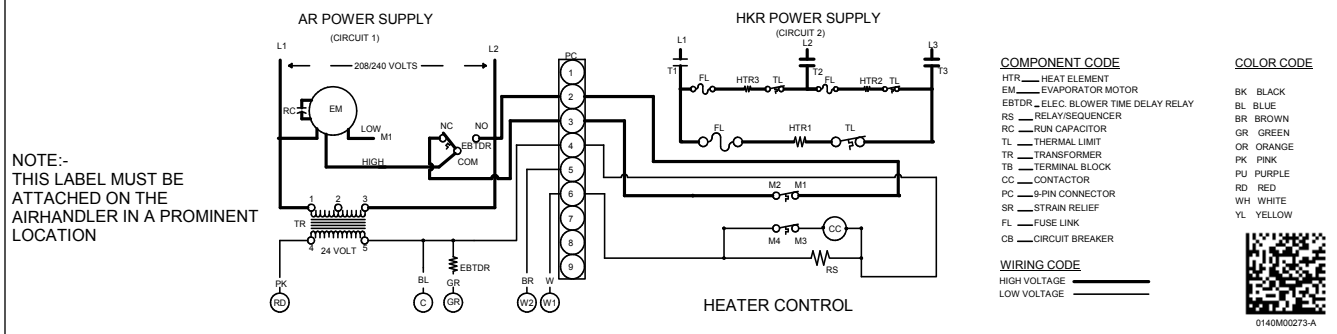
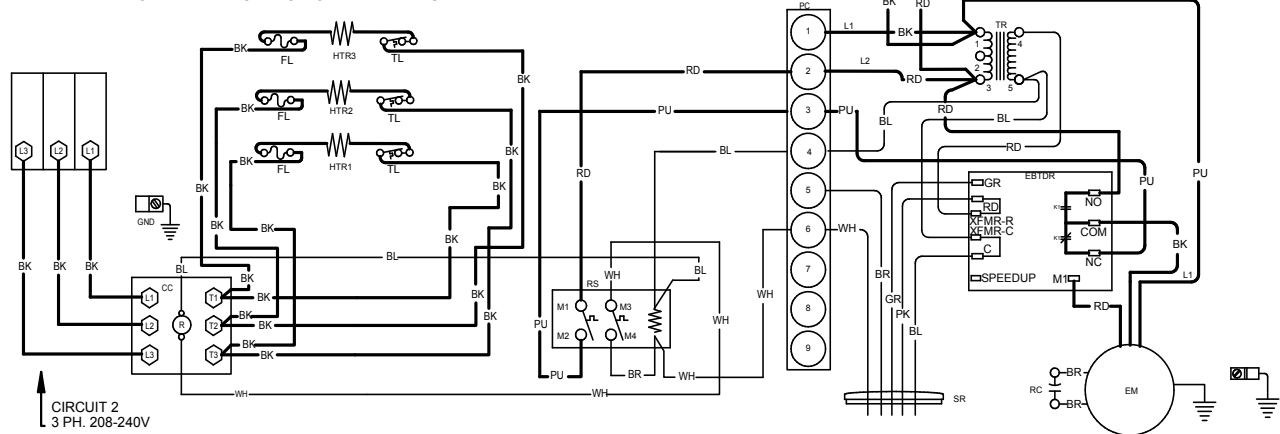
Wiring is subject to change. Always refer to the wiring diagram on the unit for the most up-to-date wiring.

WARNING

High Voltage: Disconnect all power before servicing or installing this unit. Multiple power sources may be present. Failure to do so may cause property damage, personal injury, or death.

WIRING DIAGRAM – THREE-PHASE HEATER KIT

NOTE: WHEN INSTALLING HEATER KIT, ENSURE SPEED TAP MUST EXCEED OR EQUAL THE MINIMUM BLOWER SPEED (MBS) SPECIFIED FOR THE AIRHANDLER/HEATER KIT COMBINATION ON THIS UNIT'S SERIAL PLATE.
AFTER INSTALLING OPTIONAL HEAT KIT, MARK AN "X" IN THE ☐ PROVIDED BELOW.
NO MARK INDICATES NO HEAT KIT INSTALLED.



Wiring is subject to change. Always refer to the wiring diagram on the unit for the most up-to-date wiring.



WARNING

High Voltage: Disconnect all power before servicing or installing this unit. Multiple power sources may be present. Failure to do so may cause property damage, personal injury, or death.



DOWNFLOW KITS

| DFK-B | DFK-C | DFK-D |
|--------------|--------------|--------------|
| AVPTC24B14** | AVPTC30C14** | AVPTC42D14** |
| AVPTC25B14** | AVPTC36C14** | AVPTC48D14** |
| AVPTC29B14** | AVPTC48C14** | AVPTC60D14** |
| AVPTC37B14** | AVPTC31C14** | AVPTC37D14** |
| | AVPTC37C14** | AVPTC59D14** |
| | AVPTC59C14** | AVPTC49D14** |
| | | AVPTC61D14** |

FILTERS

| CHASSIS | PART # | SIZE |
|---------|--------------|---------------|
| B | ALFH16201E | 16.0" x 20.0" |
| C | ALFH1912201E | 19.5" x 20.0" |
| D | ALFH20231E | 23.0" x 20.0" |

SINGLE POINT KIT **

| MODEL | HKR-15C | HKR-20C | HKR-21C |
|--------|---------|---------|---------|
| SPW-01 | X | X | X |

** Must be installed along with any of the above compatible heat kits. This kit will fit any AVPTC air handler as long as a compatible heat kit is installed in the unit.

NOTES