

KSIF
Series
15-16 SEER

KlimaIRE®
Mark of Superior Quality




Eco Friendly

Ductless Split Comfort Systems



What Klimaïre brings you ...

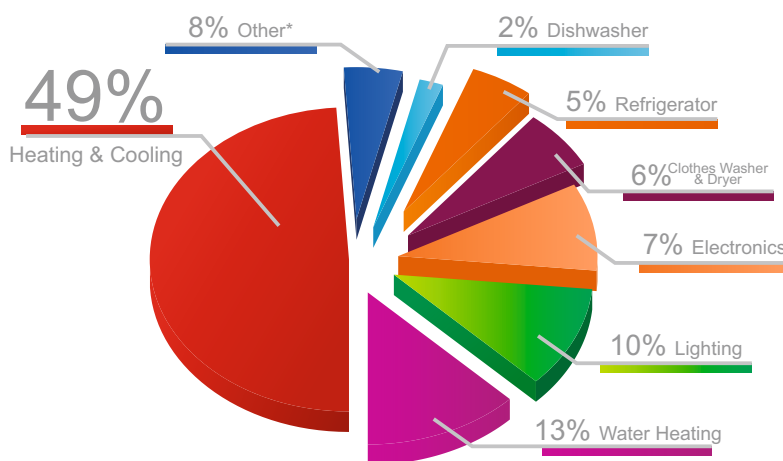
We have been in the Ductless Mini-Split business for over 25 years, Klimaïre manufacturing maintains the highest standards of quality and reliability with ISO 9001 and ISO 14001a. Our products have proven their endurance and resiliency over time, operating in 70 different countries. All products are ETL certified and AHRI registered. Klimaïre products exceed industry standards for energy efficiency and employ innovative technology to achieve the highest customer satisfaction. Since our goal is to achieve maximum customer satisfaction, we continuously seek to achieve higher performance levels in the design phase for all future units.

Ductless Mini-Split systems are one of the fastest growing products in the US and popularity is rapidly increasing. They allow air conditioning and heating systems to be added quickly, economically and conveniently, often for some applications where installing comfort systems didn't seem possible or practical.

Flexibility is the main driver of their popularity. Klimaïre ductless systems are simple, reliable, easy to install, and extremely affordable. Klimaïre slim single zone and multi zone ductless systems offer built-in solutions with duct free technology benefits. These systems are integrated with innovative inverter technology providing individual comfort and control. With our KSIX series we are committed to bring our valued customers additional savings with a unit almost ready to install, easily and quickly, with minimum HVAC technician assistance.

How much do you spend for heating & cooling your home?

The US Department of Energy (DOE) says that as much as half of the energy used in your home goes to heating and cooling. So making smart decisions about your home's heating, ventilating, and air conditioning (HVAC) system can have a big effect on your utility bills and your comfort.



Klimaïre **Invertech** DC Inverter - driven ductless air conditioners and heat pumps can save you up to 33% on your power utility bill when compared with room air conditioners or standard efficiency 10 SEER ductless systems. Ductless Invertech units are practical to install and preferred over traditional ducted central units. Total savings can reach up to 49% when heat pump technology is combined with an inverter system.

Ducted vs Ductless Systems

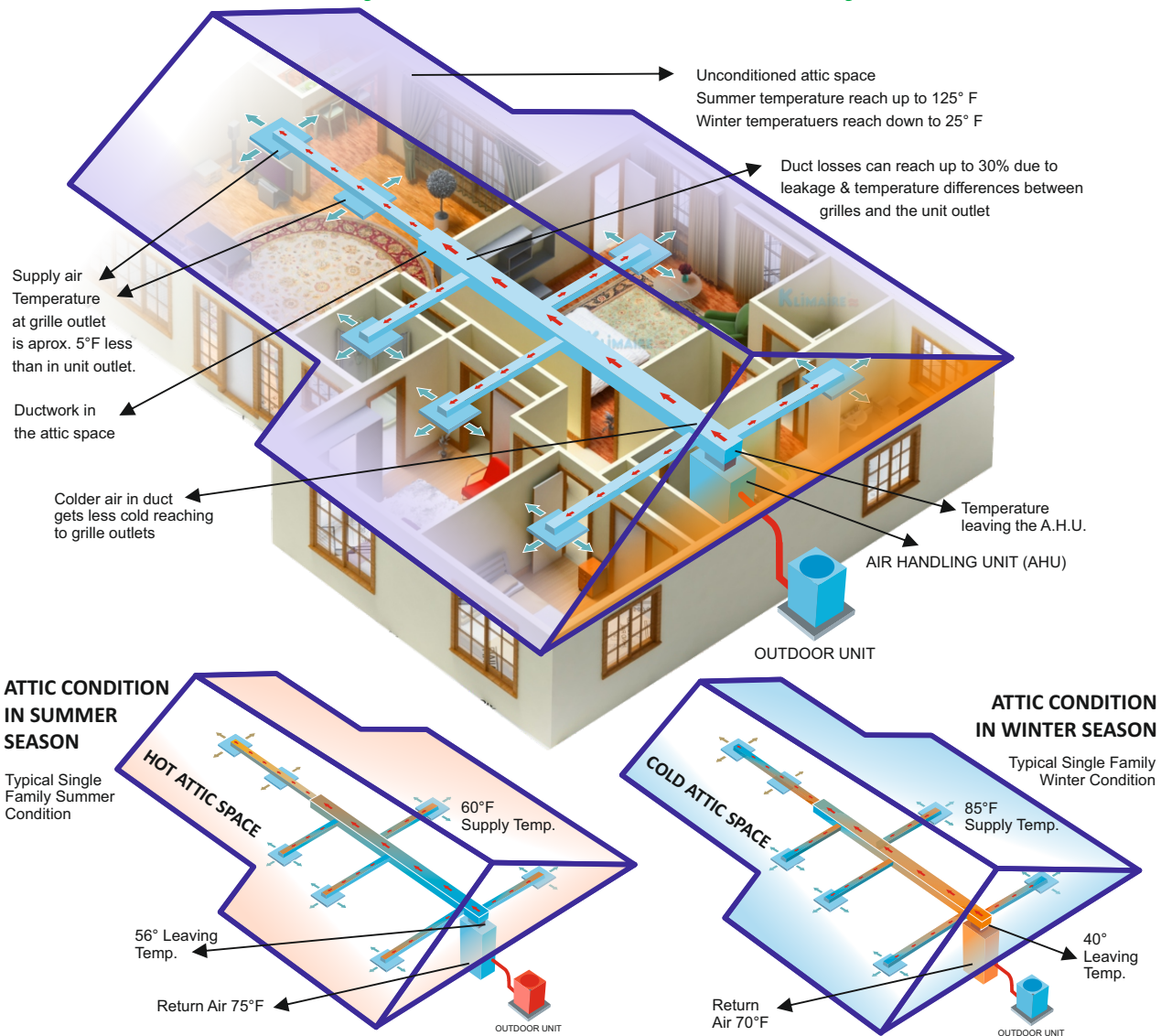
According To the US Department of Energy (energy.gov) "Since mini splits have no ducts ,they avoid the energy losses associated with ductwork of central forced air systems. Duct losses can account for more than 30% of energy consumption for space conditioning especially if the ducts are in an unconditioned space such as attic."

- You'll save energy every time you use a Klimaïre Ductless System.
- Air ducts from a central forced air system can lose energy more than 30%, with air leakage especially if the ducts run through unconditioned areas like attics or basements.
- Since Klimaïre Ductless Systems have no ducts, they avoid that energy loss completely, reducing your impact on the environment and lowering your energy costs.
- Only one temperature control for all the zones, conflicting with individual comfort preferences

KSIX
Series

KLIMAIRE®

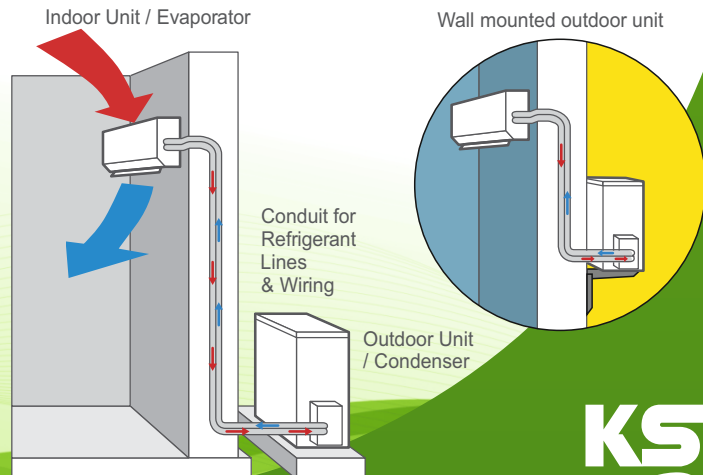
Ducted Systems Vs Ductless Systems



Summary: Duct Losses Can Be Over 30%

Ductless Mini-split Personalized Comfort Solution

Experience true individual comfort. Ductless Mini-Split systems are the perfect solution to a variety of installation challenges. Ductless Mini-Split units eliminate the use of ductwork, allowing installers the ability to place these units in locations that were previously considered impractical or impossible due to additional ducting and cost associated with installing a regular unit. Ductless Mini-Splits consist of two parts, an outdoor unit and an indoor unit, similar to regular split units, but much smaller in size. The outdoor and indoor units are connected to each other by refrigerant and electrical lines. They run together with a condensate drain line through a small hole in an exterior wall, generally 3 inch in diameter or less. In addition to eliminating the need for ducting, another great advantage of Ductless Mini-Split systems is true zone control. The indoor fan coil unit is dedicated to the room being conditioned, allowing a temperature and humidity level to be kept in a specific room, separate from the rest of the house or building.



KSIF
Series

KLIMAIRE

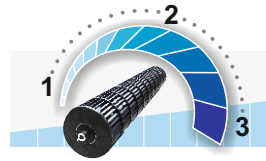
Total Comfort

Auto swing air swipe



Oscilating Louver Technology distribute air evenly throughout the room with horizontal auto swing function

3 fan speeds

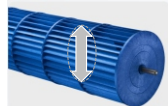


Allow you to adjust the airflow precisely to the setting that gives you the greatest comfort

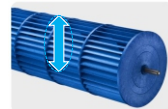
Long range air discharge



Powerful and silent air flow thru larger fan diameter to reach every spot of your room



3 1/4 in
Conventional



3 3/4 in
KSIF

Fan diameter increased, air blow distance farther, air flow volume bigger

Turbo mode



Turbo function enables the unit to reach the preset temperature at cooling or heating operation in the shortest time

Super Quiet

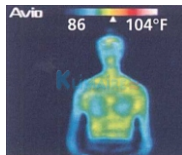
- Low Noise Design
- Optimize air discharge vane
- Silent Mode

Max Decrease
3.5dB(A)

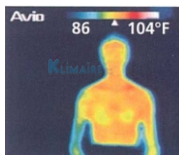
Indoor fan run at an extra breeze

Independent Humidity Control

Unique Comfort in Cooling & Heating



Room temperature 77°F
Humidity 50% COMFORTABLE
Decreasing humidity while maintaining the temperature increases comfort



Room temperature 77°F
Humidity 80% UNCOMFORTABLE
Hot and stuffy with high humidity

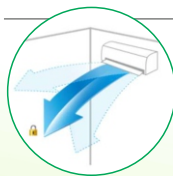
Since humidity is a major factor for comfort, Klimaire DC INVERTER adjusts to summer and winter months – driven variable speed compressors reduces capacity to match lighter loads, increasing the run time to remove moisture and reduce relative humidity resulting in improved comfort. In the winter, by increasing the speed of the compressor, Klimaire air conditioner and heat pump systems are able to maintain capacity and deliver warmer supply air even at low outdoor ambient conditions as low as 5°F



Dry mode function in remote

Convenience

Louver Position Memory Function

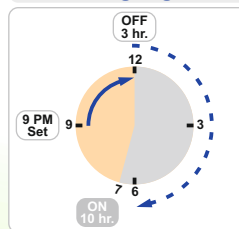


When you start the unit, the horizontal louver will return automatically to the same position that was set last time

ON/OFF 24 hr. Programmable Timer

Timer can be set ON/OFF easily upto 24 hours using the wireless remote control (Set time: 0.5, 1, 1.5, 2, 2.5,...)

During Night

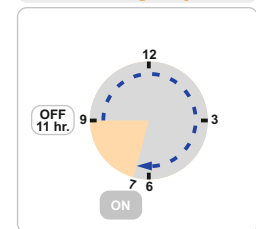


Set your comfort preferences

Remote Control



During Day



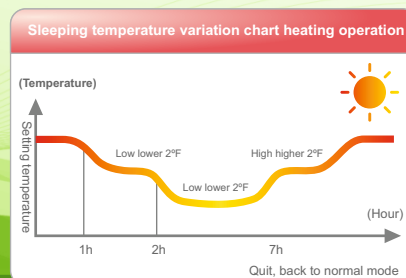
Set your comfort preferences

Sleep Mode

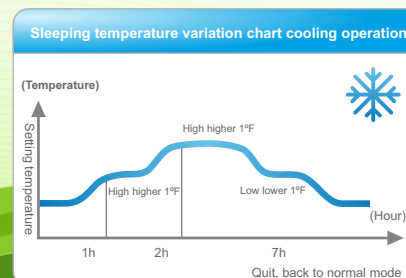
Deep SLEEP system

Once you select SLEEP mode you will enjoy comfortable and high quality sleep. Klimaire's innovative deep sleep technology varies the room temperature to help you enter and remain in a deep sleep. This new science is superior to the traditional one-temperature model.

Activated in Heat mode



Activated in Cool mode

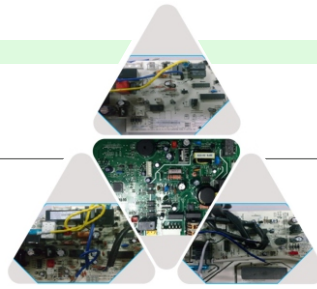


Easy Maintenance

Easy Maintenance

Self-Diagnosis
& auto Protection

Universal PCB design
For 115v one after-service PCB
For 230v one after-service PCB



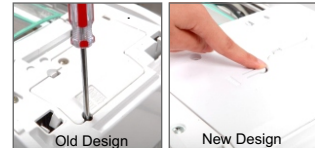
Easy Access

• Louvers structure special design, easy to disassemble
• Push the button slightly, easy to clean.



Service Friendly

* Emergency Function Using
• Manual Switch Button
✓ Easy to turn on/off without a tool.
• Emergency Using Function
✓ Smartly detecting errors, your unit **keep running** when in urgent need



Leakage Detection

* Refrigerant Leakage Detection
* You will be alerted when refrigerant is low.
* Prevents damage to the compressor
* Automatically turns off the unit

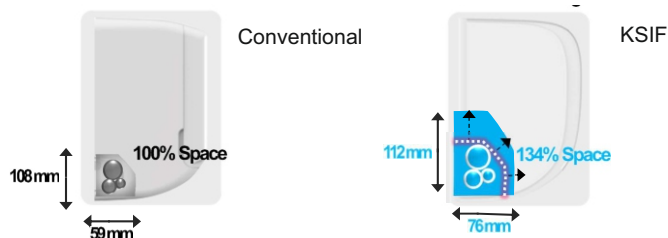


Easy Installation

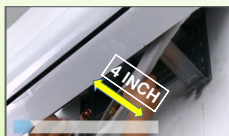
Thicker and wider plate makes the installation solid and safe.



More space for pipe connection



Easy to mount & connect



Installation gap for pipe connection > 4 in.
It is easier to connect the pipes.



Multi-refrigerant outlet pipe method:
left/right/rear, more flexible for installation.

PRODUCT HIGHLIGHTS

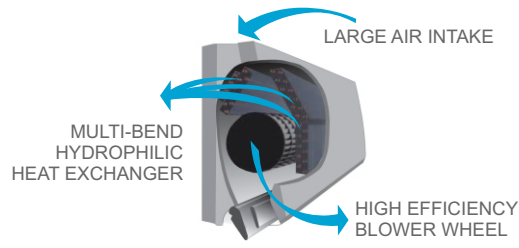
Klimaïre Invertech DC inverter -driven air conditioners and heat pumps are among the most ultimate in cooling and heating technology available in HVAC. Energy savings are much higher with this INVERTECH DC INVERTER - driven variable speed compressor.

Homeowners and neighbors enjoy the quiet whisper of the outdoor units operation, less noise to the surroundings keeps the environment peaceful.



Thin & Slim design

Thin and slim design is realized by multi-bend high efficient hydrophilic fin heat exchanger and high efficiency blower wheel.

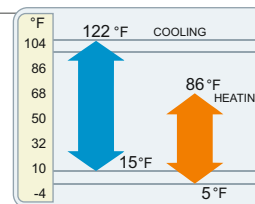


9 and 12 kBtu	13.58 in
18 kBtu	15.35 in
24 kBtu	15.55 in

Low ambient heating & cooling

- * KSIF series have the ability to produce heat in ambient conditions down to 5° F
- * KSIF series operates in cooling mode in the low winter ambient conditions down to 5° F when heating is necessary in spaces like server rooms, sun rooms & hydroponic labs.

The outdoor unit special design specialized sensors make possible to start and defrost the unit even when the outdoor temperature is as low as 5 °F.



Self Cleaning

Self Cleaning

Your Klimaïre KSIF series equipped with Auto Clean Function. It cleans and dries the evaporator to prevent mildew grow and keep it fresh for next operation.



Operation	Low Fan Only	Heating & Low Fan	Low Fan Only
Time (minute)	1-13	14	15-16

Indoor Air Quality (IAQ) Options



Bio Filter

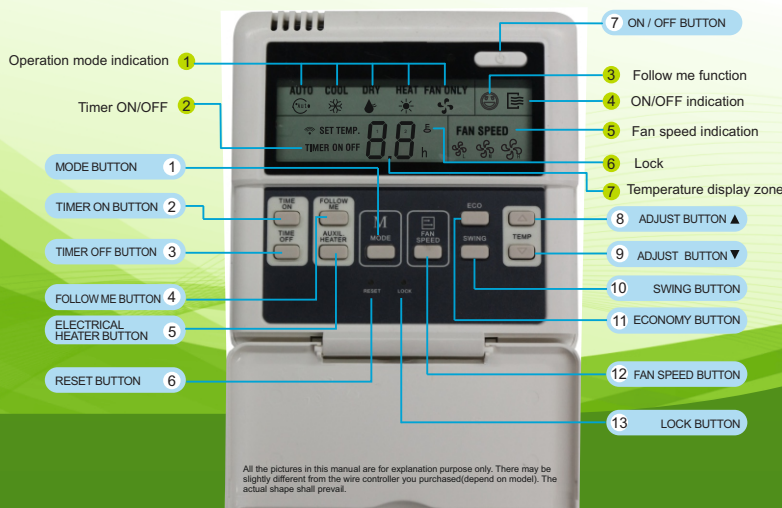


Compound Filter



High Density Filter

Optional Wired Control



All the pictures in this manual are for explanation purpose only. There may be slightly different from the wire controller you purchased (depend on model). The actual shape shall prevail.

Remote Control

1 ON/OFF Button

This button turns the air conditioner ON and OFF.

2 MODE Button

Press this button to modify the air conditioner mode in a sequence of following:

→ AUTO → COOL → DRY → HEAT → FAN

NOTE: Please do not select HEAT mode if the machine you purchased is cooling only type. Heat mode is not supported by the cooling only appliance.

3 FAN Button

Used to select the fan speed in four steps:

→ AUTO → LOW → MED → HIGH

NOTE: You can not switch the fan speed in AUTO or DRY mode.

4 SLEEP Button

- Active/Disable sleep function. It can maintain the most comfortable temperature and save energy. This function is available on COOL, HEAT or AUTO mode only.

For the detail, see "sleep operation" in "USER'S MANUAL".

NOTE: While the unit is running under SLEEP mode, it would be cancelled if MODE, FAN SPEED or ON/OFF button is pressed.

5 TURBO Button

Active/Disable Turbo function. Turbo function enables the unit to reach the preset temperature at cooling or heating operation in the shortest time (if the indoor unit does not support this function, there is no corresponding operation happened when pressing this button.)

6 SELF CLEAN Button

Active/Disable Self Clean function. Under SELF CLEAN mode, the air conditioner will automatically clean and dry the Evaporator and keep it as fresh for the next operation.

7 UP Button (▲)

Push this button to increase the indoor temperature setting in 1°F increments to 86°F.

DOWN Button (▼)

Push this button to decrease the indoor temperature setting in 1°F increments to 62°F.

NOTE: Temperature control is not available in Fan mode.

NOTE: Press and hold UP and DOWN buttons together for 3 seconds will alternate the temperature display between the °C & °F scale.

8 SILENCE/FP Button

Active/Disable SILENCE function. If pushing more than 2 seconds, the "FP" function will be activated, pushing more than 2 seconds again to disable.

When the Silence function is activated, the compressor will operate at low frequency and the indoor unit will bring faint breeze, which will reduce the noise to the lowest level and create a quiet and comfortable room for you. Due to low frequency operation of compressor, it may result in insufficient cooling and heating capacity.

Activates/Disables freeze protection "FP" or HOME-AWAY function. It can only be activated during the heating operation. (only when the setting mode is HEAT). The unit will operate at high fan speed with the temperature automatically set to 46°F. The display window of indoor unit will display FP. For the unit without display area, the Defrost indicator light will be keeping on for 2 seconds. Keeps the room over freezing temperature.

9 TIMER ON Button

Press this button to initiate the auto-on time sequence. Each press will increase the auto-timed setting in 30 minutes increments. When the setting time displays 10.0, each press will increase the auto-timed setting 60 minutes increments. To cancel the auto-timed program, simply adjust the auto-on time to 0.0.

10 TIMER OFF Button

Press this button to initiate the auto-off time sequence. Each press will increase the auto-timed setting in 30 minutes increments. When the setting time displays 10.0, each press will increase the auto-timed setting 60 minutes increments. To cancel the auto-timed program, simply adjust the auto-off time to 0.0.

11 SWING Button

Used to stop or start horizontal louver auto swing feature.

12 DIRECT Button

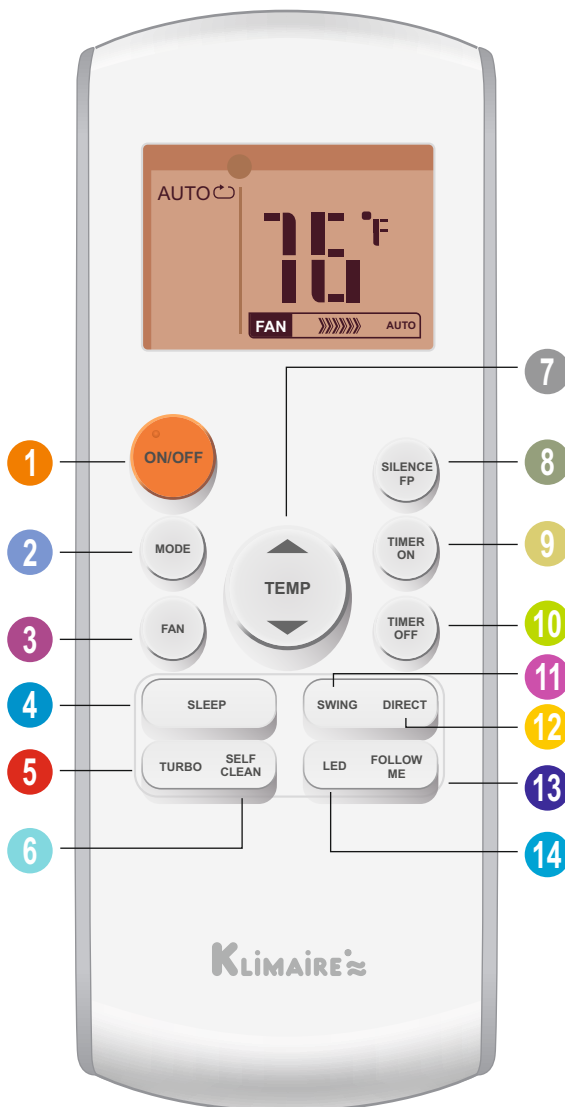
Used to change the louver movement and set the desired up/down air flow direction. The louver changes 6° angle for each press.

13 FOLLOW ME Button

Push this button to initiate the Follow Me feature, the remote display is actual temperature at its location. The remote control will send this signal to the air conditioner every 3 minutes interval until press the Follow Me button again. The air conditioner will cancel the Follow Me feature automatically if it does not receive the signal during any 7 minutes interval.

14 LED Button

Disable/Active indoor screen Display. When pushing the button, the indoor screen display is cleared, press it again to light the display.



Wi-Fi Capability (Optional)

Control Your Klimaire® Mini-Split From Anywhere

How does it work?



iOS or Android APP

The mini-splits are controlled from a webpage or using an iOS or Android APP in a very intuitive way.



Smart Kit (Wi-Fi)

An optional Smart Kit (Wi-Fi) device installed in each unit controls the operation.



Cloud Managed

A Server in the cloud manages the whole process.

Wi Fi Control Features



Optional Smart Kit

To have remote access to control your Klimaire unit, optional smart kit should be installed.



Turn on/off mini-split

Turn your A/C on/off as you wish



Change Program Settings

Change the program settings, such fan speed, temperature, and operation mode



Temperature Home

Monitor current room temperature, set timer on/off activate frost protection and sleep timer.



Check AC

Check AC running status and display detailed information



Program Calendar

Program the mini-split with a calendar scheduler in an easy, intuitive way.



Save Money

Save money without losing comfort.

Remotely managed

Remotely manage your mini-split system using a simple smartphone, tablet or PC via the Internet.

Your Klimaire Wi-Fi enabled air conditioner lets you control your ductless mini split air conditioner using your smartphone or tablet from anywhere internet connection is available. Our free IOS and Android smartphone app gives you the freedom to instantly adjust your settings saving you time and money on energy consumption and cost.



Optional Smart Kit



Local Control

Standard Wi-Fi
b/g/n router



Cloud System



iOS and
Android APPS
From Everywhere



KSTF
Series

KLIMAIRE®



Health Functions



Self Cleaning

Automatically clean & dry the evaporator coil



Washable Filter

The indoor unit filters can be taken out and easily washed to keep air clean all time.



Silver Ion Bacterial Filter

This anti-bacterial filter kills many types of bacteria and helps to control the growth of microbes, fungi, spores and many other harmful air pollutant + Carbon filter filter's highly porous surface attracts and removes certain odorous organic compounds and traps them instead of just masking the offending odors.+ filters out the formaldehyde and other volatile organic compounds (VOCs) as well as harmful gases and offending odors.

Health Functions (Optional)



Bio Filter

This filter consists of a specialized biological enzyme filter and eco filter. The Eco filter catches very small airborne dust particles, bacteria, fungi, and microbes. The biological enzyme filters dissolves the cell wall of the bacteria to eliminate the problem.



Compound Filter

Combo Filter – This filter combines a yellow vitamin C a healthy material that is discharged into the room, makes the air feel fresh and healthy together with a black activated carbon filter for odor control , and a portion of red anti-formaldehyde material filter for better indoor air Quality.



Cold Catalyst Filter

Cleans dust & retains Pollen up to 80%



Carbon Filter

Activated Carbon Filters are the most effective way to remove gases, chemicals, cigarette smoke, and other odors from the air. They are especially helpful for those with Multiple Chemical Sensitivity or any respiratory condition that makes one sensitive to airborne chemicals.

Comfort Functions



Turbo Mode

When the air conditioner goes into this mode maximizes the cooling or heating capacity output cooling down or heating up the room fast.



12 Grades Indoor Fan Speeds

Allow you to adjust the airflow precisely to the setting that gives you the greatest comfort.



Anti-cold Air Function (Heat Pump)

When the heating operation starts the fan coil will automatically run from the lowest speed to the preset level, so it will prevent cold air blowing out at the start of the operation avoiding discomfort too the user.



Follow Me

When you stay close to the remote control a built-in temperature sensor senses the temperature around you and automatically chooses the operation mode to achieve an accurate and comfortable temperature just as if the air conditioner were following you.



Dry Mode

In this mode the air conditioner efficiently dehumidifies the room.



Auto Swing

Distributes air evenly

KLSIF
Series

KLIMAIRE

Convenience



Dual Side Water Outlet

Multi-outlet – The refrigerant tubes and the water outlet can be installed either on the right or the left side of the unit for installation flexibility.



Washable Front Panel

The front panel can be easily removed to be washed and keep its elegant appearance.



Timer

The air conditioner can be turned on or off at any set time in a 24 hour period.



Louver Position Memory

After the user finds the best angle for the louver, when the unit restarts again the angle of the horizontal louver will automatically move to the same position set last time



Self-diagnosis and Auto-protection

Provides faster and accurate service diagnostics



Fire Proof Electric Box

More safer and complies with all safety regulations



Auto Re-start

The air conditioner memorizes the operation settings and when there is a power outage it will start up using these settings when the power is reestablished.



Freeze Protection

Home away winter vacation function provides piece of mind and keeps a minimum temperature of 46F during your absence preventing freezing of indoors.



Low ambient cooling

Occasionally it is necessary to cool inner room during winter. This design feature allows operation at low ambient conditions



Refrigerant Leakage Detection

Alert when refrigerant is low monitors and prevents compressor damage or overload.



Silent

Turns off the beep sound of the Buttons of remote control

Energy Savings



Sleep Mode

During sleep mode the AC will automatically increase (cooling) or decrease (heating) by 1° per hour in the first two hours and switch off after 5 hours. The sleep mode function helps to maintain the most comfortable temperature and to save more energy.

KSIF - Product Code:



KSIF
Series

KLIMAIRE

15-16 SEER

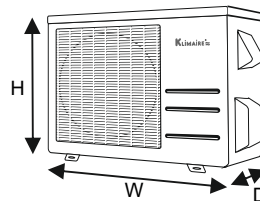
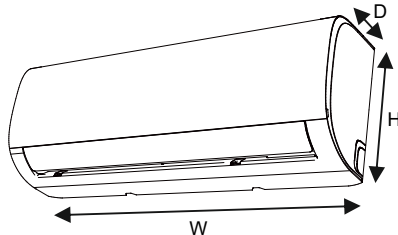
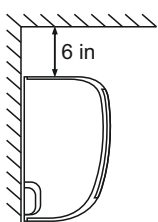
KSIF - Air Conditioner Technical Specifications



Klima Model Number			KSIF009-H115-S	KSIF012-H115-S	KSIF009-H215-S	KSIF012-H215-S	KSIF018-H215-S	KSIF024-H215-S
Indoor Unit Model Number			KSIF009-H115-IW	KSIF012-H115-IW	KSIF009-H215-IW	KSIF012-H215-IW	KSIF018-H215-IW	KSIF024-H215-IW
Outdoor Unit Model Number			KSIF009-H115-O	KSIF012-H115-O	KSIF009-H215-O	KSIF012-H215-O	KSIF018-H215-O	KSIF024-H215-O
Power supply		V-Hz-ph	115V~ 60Hz /1ph	115V~ 60Hz /1ph	208-230V~60Hz /1ph	208-230V~60Hz /1ph	208-230V~60Hz /1ph	208-230V~60Hz /1ph
Cooling	Capacity	Btu/h	9000	12000	9000	12000	18000	24000
	Power Input	W	900	1200	855	1175	1635	2665
	Rated current	A	8,0	5,4	3,7	5,3	7,3	11,8
	SEER	Btu/W	15,2	16	15	15,5	15,5	15
	EER	Btu/W	10	10	10,5	10,2	11	9
Heating	Capacity	Btu/h	9800	12000	9800	12000	18000	24000
	Power Input	W	965	1260	990	1200	1700	2550
	Rated current	A	8,6	5,7	4,5	5,4	7,6	11,3
	HSPF4	Btu/W	9,0	9,0	8,8	9,3	9,8	8,8
	COP	W/W	10,2	9,5	9,9	10	10,6	9,41
Minimum Circuit Ampacity		A	15	15	15	15	15	15
Maximum Fuse Size		A	15	20	15	15	20	25
Compressor	Type		ROTARY	ROTARY	ROTARY	ROTARY	ROTARY	ROTARY
	Capacity	Btu/h	10014	10014	10014	10014	13836	24344
	Input	W	748	748	748	748	1035	1970
	Refrigerant oil/oil charge	ml	ESTER OIL VG74-370	ESTER OIL VG74-370	ESTER OIL VG74-370	ESTER OIL VG74-370	ESTER OIL VG74-370	ESTER OIL VG74/670
Indoor fan motor	Input	W	46	46	47,4	47,4	58,5	89
	RLA	A	0,3	0,3	0,25	0,25	0,4	0,45
	LRA	A	0,54	0,54	0,235	0,235	0,356	0,6
Indoor air flow (Hi/Mi/Lo)		cfm	265/212/159	318/241/176	265/212/159	318/241/176	424/341/200	565/447/341
Indoor noise level (Hi/Mi/Lo)		dB(A)	41/35/26	41/36/28	41/36/27	42/36/27	43.5/36/34.5	45/38/32
Indoor unit	Dimension (W*D*H)	in	28.15x7.68x11.22	31.69x7.68x11.22	28.15x7.68x11.22	31.69x7.68x11.22	37.72x8.39x11.89	40.87x8.66x12.8
	Packing (W*D*H)	in	30.71x10.63x14.17	34.25x10.63x14.17	30.71x10.63x14.17	34.25x10.63x14.17	40.75x11.61x14.96	44.09x15.94x12.2
	Net/Gross weight	lb	15.9/20.5	17.2/22.0	15.9/20.5	17.2/22.0	22.9/29.5	29.3/36.6
Outdoor fan motor	Model		YKT-32-6-202L	YKT-32-6-202L	YKT-32-6-3L	YKT-32-6-3L	YKT-48-6-206	YKT-63-6-200L
	Fan speed (Hi)	rpm	850	850	850	850	880	930
	Input	W	80,2	80,2	32 (Output)	32 (Output)	103,8	136
Outdoor air flow		cfm	1060	1120	1060	1120	1470	1590
Outdoor noise level		dB(A)	54,0	54,0	55,0	55,0	57,0	58,5
Outdoor unit	Dimension(W*D*H)	in	30.31x11.81x21.85	30.31x11.81x21.85	30.31x11.81x21.85	30.31x11.81x21.85	31.50x13.11x21.81	33.27x14.29x27.64
	Packing (W*D*H)	in	35.43x13.58x23.03	35.43x13.58x23.03	35.43x13.58x23.03	35.43x13.58x23.03	36.22x15.35x24.21	38.00x15.55x29.72
	Net/Gross weight	lb	61.5/66.6	65.0/70.1	57.1/62.4	60.6/66.4	80.5/87.1	105.2/112.4
Refrigerant type		oz	R410A/28.2	R410A/33.9	R410A/28.2	R410A/33.9	R410A/45.2	R410A/63.5
Refrigerant precharge		ft	25	25	25	25	25	25
Additional charge per ft		oz	0,161	0,161	0,161	0,161	0,161	0,322
Design pressure		psig	550 / 340	550 / 340	550 / 340	550 / 340	550 / 340	550 / 340
Refrigerant piping	Liquid side/ Gas side	in	1/4" / 3/8"	1/4" / 1/2"	1/4" / 3/8"	1/4" / 1/2"	1/4" / 1/2"	3/8" / 5/8"
	Max. refrigerant pipe length	ft	82	82	82	82	98	98
	Max. difference in level	ft	33	33	33	33	66	66
Connection wiring (Stranded, unshielded)		AWG	16AWG*4	16AWG*4	16AWG*4	16AWG*4	16AWG*4	16AWG*4
Thermostat type			Remote Control	Remote Control	Remote Control	Remote Control	Remote Control	Remote Control
Operation temperature	Indoor (cooling/ heating)	°F	62~90/32~86	62~90/32~86	62~90/32~86	62~90/32~86	62~90/32~86	62~90/32~86
	Outdoor (cooling/heating) - Optional	°F	5~122/5~86	5~122/5~86	5~122/5~86	5~122/5~86	5~122/5~86	5~122/5~86
Application area (cooling standard)		sq.ft	129-189	172-252	129-189	172-252	251-368	330-484

Continued product improvement is our goal at Klima Products, Inc. Hence, specifications and data listed herein are subject to change without notice and without obligation on our part. Always comply with local, state, and national electrical codes.

- 1 - Minimum 10 ft line set recommended.
- 2 - Outdoor unit being elevated than the indoor unit oil trap should be installed every 17 ft to 23 ft (5 to 7 m)



KLIMAIRE

Accessories



115 - 230 V

Condensate Drain
Mini-Pumps



WAFB21

Outdoor unit wall brackets



WAFP21



EZ - Quick installation kits
16, 25, 35, 50 ft.



AQS-0066-11

Aqua Over-Flow Switch



Eco Friendly



Note: The data in this brochure may be changed without notice
for further improvement on quality and performance