



# SUBMITTAL : ECO-HPSTD-12 Heat Pump Mounting Stand



Job Name \_\_\_\_\_  
Purchaser \_\_\_\_\_  
Submitted to \_\_\_\_\_  
Unit Designation \_\_\_\_\_

Location \_\_\_\_\_  
Engineer \_\_\_\_\_  
Reference ☐ Approval ☐ Construction ☐  
Schedule # \_\_\_\_\_

Specifications	ECO-HPSTD-12
<b>Physical Data</b>	
Material	16 GA Steel
Maximum Stand Width	43"
Stand Cross Bar Length	20 1/2"
Weight	22lbs
<b>Mounting</b>	
Stand Max Mounting Weight	176lbs

## Construction

Mounting Bracket shall be constructed from 16 GA steel with a baked on powder coating for corrosion resistance

## Installation

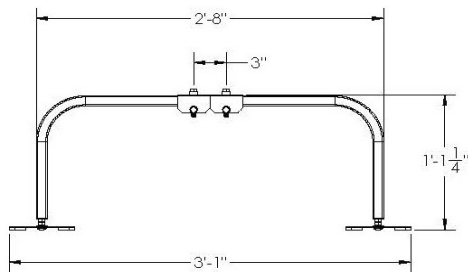
Heat Pump Stand shall consist of cross bars that can be adjusted in position for the mounting of the SANCO<sub>2</sub>

Heat Pump and the depth of the Stand set to match the width of SANCO<sub>2</sub> mounting feet brackets

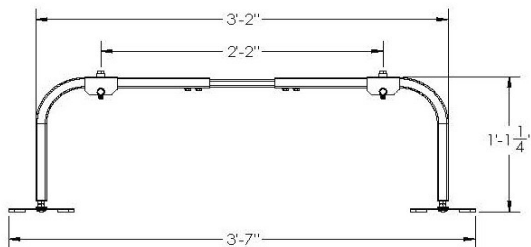
The Heat Pump Stand shall provide the platform to raise the SANCO<sub>2</sub> unit 12" above snow, allow access to the Air Bleed screw and Condensate drain from the unit  
SANCO<sub>2</sub> unit shall be fastened to the Heat Pump Stand using the bolts and anti-vibration washers provided

## Application

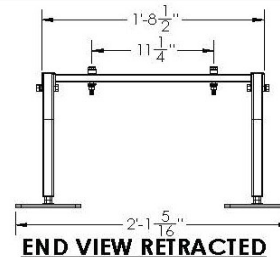
Heat Pump Stand shall allow the SANCO<sub>2</sub> unit to be mounted on a concrete or other material/ground floor as required by the building type



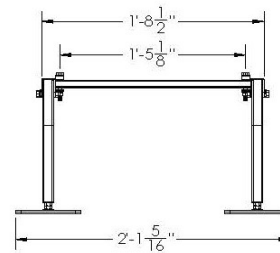
**SIDE VIEW RETRACTED**



**SIDE VIEW EXPANDED**



**END VIEW RETRACTED**



**END VIEW EXPANDED**