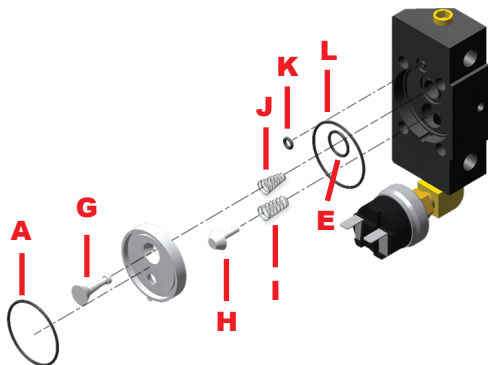


Valve Seal Kit



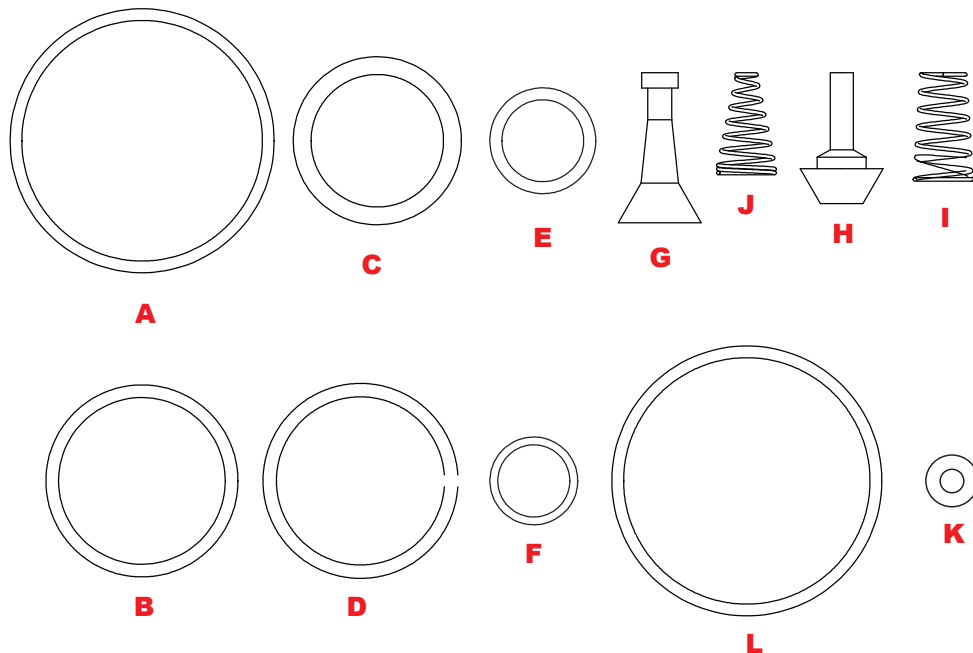
Important Note: Input/Output ports should face towards the front of the machine (away from the motor).

KTG166-R

G1Single Compressor

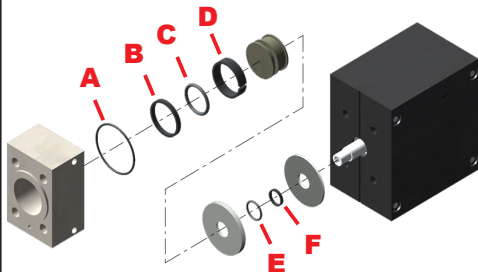
Repair Kit

Parts Sizing Guide



Piston Seal Kit

Important Note: Be careful not to damage the edges of the Piston while removing or installing the seals and o-rings.



Important Note: Use BLUE Threadlocker to attach Piston Head and Piston Shaft.

Step 1: Remove old seal and o-ring from the piston head by very carefully cutting them with a razor knife.
(See Figure 1).

Caution: Do not cut or nick the piston as this may create a leak path.

Figure 1



Step 2: Remove the piston head using needle nose vise grips: place the tips of the vise grips into the larger groove on the piston head.
(See Figure 2).

Caution: Do not grip the ridges of the piston head.

Figure 2



Important Note: For the following steps, put a drop or two of oil (refrigerant oil preferred) on new seals and O-Rings before installing to aid in reseating.

Step 3: Place new o-ring and seal into the recess on the seal plate, and carefully slide the seal plate down the piston shaft, keeping the seal recess facing away from the crankcase.
(See Figure 3).

Step 4: Tightly replace the piston head before installing the seals and o-rings.

Be sure to keep the seal plate washer and spacer shim (if present) in place.

Figure 3



Step 5: Place new o-ring in smaller groove. Place seal partially in groove and, using a plastic rod or screw driver handle, slide rod or handle across top of piston while pressing down firmly. Gently massage seal back to shape into the groove.
(See Figure 4).

Figure 4



Firmly slide seal into place over new o-ring.

Step 6: Place new o-ring into the groove on the bottom of the cylinder. Gently slide cylinder over new seals (oil helps).

Step 7: When reinstalling the compressor head, be sure to align the small hole on the side of the cylinder to the matching hole on the head. Tighten all four bolts equally and evenly in a repeated cross pattern to keep head level.

Important Note: When replacing seals, the energizing o-ring (underneath the seal) must be replaced at the same time as they can wear out.

For a video tutorial and more helpful videos visit:

www.YouTube.com/AppionTools