



# 2020 AC/R Product Catalog



Refrigerant Recovery

AC/R System Evacuation

Digital Measurement & Service Tools





### Our Philosophy . . .

Appion is based in the shadows of the Rocky Mountains in Colorful Colorado. Our goals aren't just to create great products for technicians, we strive to improve the AC/R industry through innovation, education, and by sharing our knowledge. We challenge ourselves to go beyond expectations and build on the dynamic nature of the AC/R market, always with the needs of the technician in mind.

### Never Stop Learning . . .

Education is at the forefront of our business. Whether it's leading educational seminars, on-site trainings for contractors and businesses, learning from our customers, or our open-door policy for anyone with a thirst for knowledge, we are committed to helping the industry move forward in a positive way.

### Appion is Applied Innovation

The AC/R systems of today demand accurate, rugged, reliable tools to ensure they are efficiently running at their designed potential. Appion is in the field alongside service technicians to gain a better understanding of their needs so we can drive innovation in our products.

Only through this understanding can superior products be designed and innovated. This is our purpose.

# Table of Contents

## 15 New Product Spotlight

### ▶ Refrigerant Recovery

- 1 G5Twin Refrigerant Recovery Pump
- 3 G1Single Refrigerant Recovery Pump
- 5 W.S.R Advantage
- 7 SpeedKit-R Fast Recovery Kit

### ▶ AC/R Evacuation

- 9 TEZ8 CFM Vacuum Pump
- 11 Appion Ultimate Seal Vacuum Pump Oil
- 13 MegaFlow Basics
- 17 SpeedKit-V Fast Evacuation Kit
- 19 TEZ Speed System

### ▶ ION Digital Gauges

- 21 AV760 Vacuum Gauge
- 23 Pressure and Temperature Gauges

### ▶ Service Tools

- 25 MegaFlow V.C.R.T's
- 12 MegaFlow Hoses
- 27 MegaFlow Speed-Ys

### ▶ Additional Information

- 29 Parts and Product Index
- 30 Warranty and Support





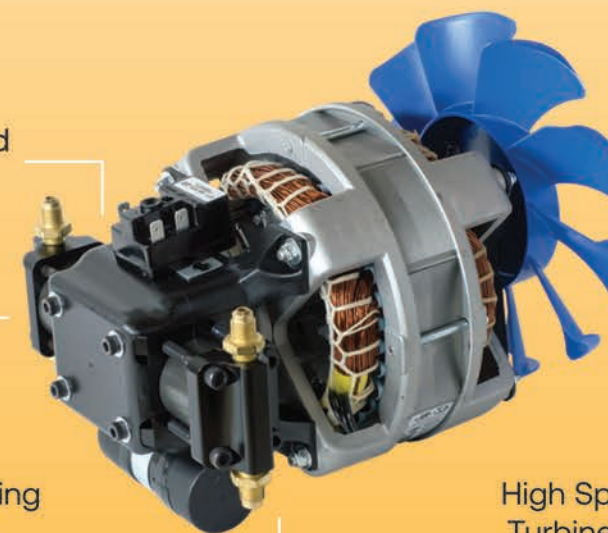
# G5Twin™

CYLINDER / CONDENSER

## High Speed Industrial Recovery

The G5Twin is designed to reliably pump liquid without any need for throttling, cutting down on overall recovery time.

The G5Twin is built with a high-efficiency motor and compressor along with massive air-flow. This design allows for maximum pumping performance and cooling efficiency for the fastest refrigerant recovery.



Refrigerant-Isolated Crankcase

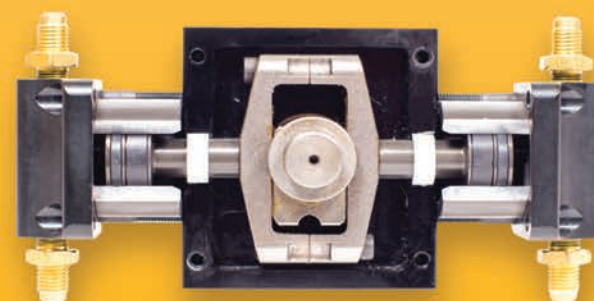
Horizontally Opposing Twin Cylinders

High Speed/High Pressure Turbine Fan Over 700cfm

## Automatic Liquid and Vapor Recovery

**4x  
Faster**

Up to 4x Faster **Certified Recovery Rates** Compared to units in it's class



Refrigerant-Isolated Crankcase for Maximum Reliability

- ▶ Patented Opposing **Twin Cylinders** and **Twin Condensers** for ultra-fast recovery
- ▶ **Permanently-lubricated, bearing-lined crankcase** is isolated from refrigerant, eliminating bearing contamination

- ▶ Pumps **Liquid and Vapor** with not throttling
- ▶ 7-inch, 10-blade turbine fan blasts over **700 cfm of cooling air** over the twin condensers and twin cylinder heads

### G5Twin Recovery Rates (per min)

Refrigerant	Push-Pull	Liquid	Vapor
<b>R134a</b>	15.87 lb 7.20 kg	10.14 lb* 4.60 kg*	0.46 lb** 0.21 kg**
<b>R-22</b>	16.62 lb 7.54 kg	10.36 lb 4.70 kg	0.62 lb 0.28 kg
<b>R-407C</b>	17.61 lb 7.99 kg	11.93 lb 5.41 kg	0.5 lb 0.25 kg
<b>R410A</b>	20.50 lb 9.30 kg	17.20 lb 7.80 kg	0.55 lb 0.25 kg

\*Using high speed direct liquid mode; 8.16 lb / 3.7 kg with standard recovery  
\*\* With external cooling accessory; 0.44 lb / 0.20 kg with standard recovery

### G5Twin Product Specifications

<b>Dims</b>	11.38in x 10.30in x 9.40in 289mm x 262mm x 239mm
<b>Weight</b>	24lbs 11kg
<b>Power</b>	115 VAC, 60Hz, 10 Amps Int'l: 230 VAC, 50Hz, 5 Amps

Learn More At  
[www.AppionTools.com/G5Twin](http://www.AppionTools.com/G5Twin)





# G1Single<sup>TM</sup>

CYLINDER RECOVERY



## Automatic Liquid and Vapor Recovery



Easy To Use  
Ideal For **Residential**  
and **Appliance** Recovery

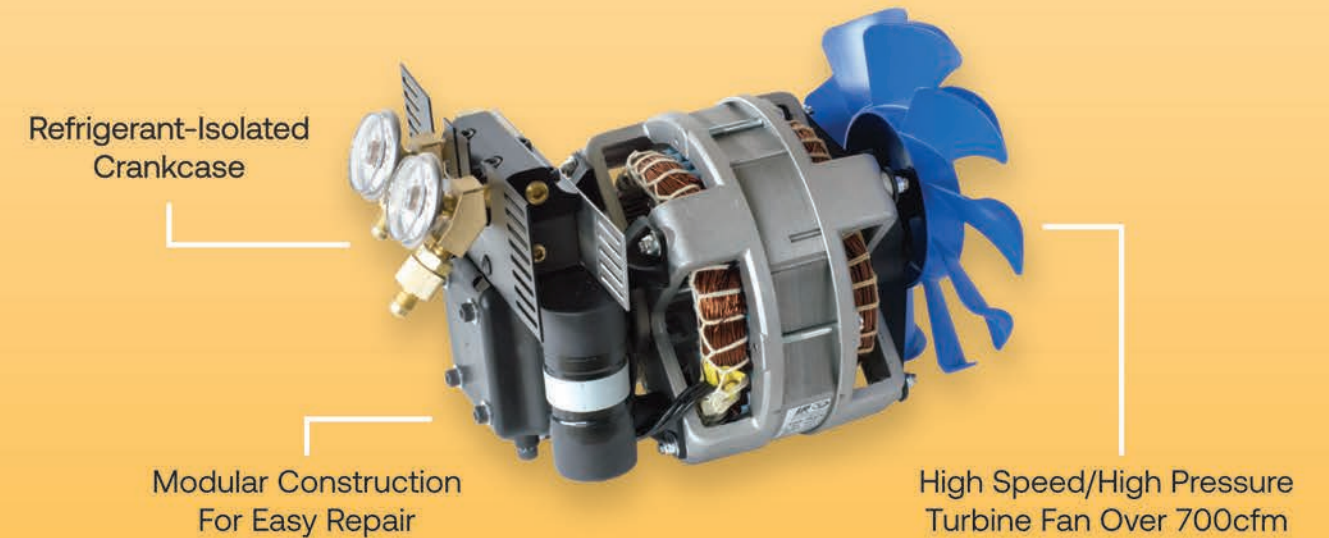


Refrigerant-Isolated  
Crankcase For  
Maximum Reliability

## Economical Liquid and Vapor Recovery

The G1Single is designed for hands free liquid recovery. With easy to use, no valve operation, the G1Single simplifies the recovery process.

The G1Single is built with a high-efficiency motor and single cylinder compressor along with massive air-flow. The design allows for maximum pumping performance and cooling efficiency for fast and simple refrigerant.



- ▶ Easy to use, ideal for residential and appliance recovery jobs
- ▶ **Permanently-lubricated, bearing-lined crankcase** is isolated from refrigerant, eliminating bearing contamination

- ▶ No purge cycle required
- ▶ 7-inch, 10-blade turbine fan blasts over **700 cfm of cooling air** over the twin condensers and twin cylinder heads

### G1Single Recovery Rates (per min)

Refrigerant	Push-Pull	Liquid	Vapor
<b>R134a</b>	9.44 lb 4.28 kg	5.20 lb 2.36 kg	0.22 lb 0.10 kg
<b>R-22</b>	10.80 lb 4.90 kg	8.55 lb 3.88 kg	0.26 lb 0.12 kg
<b>R-407C</b>	11.33 lb 5.14 kg	5.84 lb 2.65 kg	0.31 lb 0.14 kg
<b>R410A</b>	12.17 lb 5.52 kg	4.32 lb 1.96 kg	0.26 lb 0.12 kg

G1Single	Product Specifications
<b>Dims</b>	11.38in x 10.30in x 9.40in 289mm x 262mm x 239mm
<b>Weight</b>	24lbs 11kg
<b>Power</b>	115 VAC, 60Hz, 10 Amps Int'l: 230 VAC, 50Hz, 5 Amps

Learn More At  
[www.AppionTools.com/G1Single](http://www.AppionTools.com/G1Single)





# The W.S.R Advantage:

Weight, Speed, and Reliability

## The Lightweight Advantage

At only **24lbs**, the **G5Twin** is a small and lightweight recovery machine **capable of handling** the tough demands of **industrial/commercial recovery**.

The **G1Single** delivers comparable recovery rates to larger single-cylinder units at only **22lbs** without the hassle or bulk, **ideal for residential and appliance recovery**.



Only 24lbs!

## The Speed Advantage

A Custom 7in, 10 blade turbine fan blasts **over 700cfm** of high static pressure cooling air through the machine

**Up to 50°F cooler** compressor heads helps refrigerant stay cool and dense, **maximizing** throughput even in the highest ambient temperature conditions

Entire unit runs cooler, **leading to better operation and a longer life**

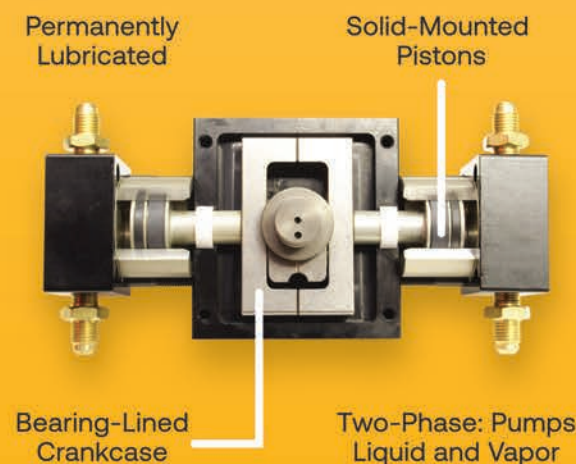


## The Reliability Advantage

The **Permanently-Lubricated** crankcase is isolated from refrigerant, eliminating bearing contamination

The **Solid-Mounted** pistons eliminate wrist pins and bushing wear, ensuring full-speed recovery for the entire life of the machine

**Bearing-Lined Crankcase** evenly spreads the load of each stroke, preventing seized compressors



# Fast Recovery with the G5Twin



**Above:** Chillers containing **4000lbs** of R134a being recovered with a **G5Twin** in the sweltering heat of Saudi Arabia. What once took a week now takes **only 18 hours** with the **Speed and Reliability** of the G5Twin

**Below:** On a R407a system retrofit of a low temperature ice cream case, the **G5Twin** recovered **600lbs** of R22 in record time using the **Push-Pull Method**.



**Above:** At times running, **8-10 hours a day, 5 days a week**, the **G5Twin** has proven to be extremely **Fast and Reliable**. Not a problem, thanks to the G5Twin.

**Below:** G5Twin used daily in reclamation facility for tank to tank transfers.



Learn More About  
the G5Twin at  
[www.AppionTools.com/G5Twin](http://www.AppionTools.com/G5Twin)



# FAST RECOVERY KIT **SPEEDKIT-R**

Recovery

5/16in System Connections

1/4in System Connections



## Fast and Simple Manifold-Less Recovery



Designed for High Pressure Refrigerants

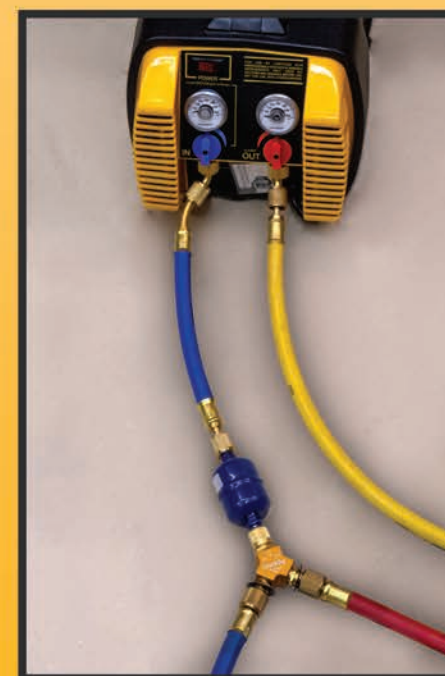
Featuring the  
**NEW**  
Filter Dryer Hose  
and Speed-Y



Full Flow 3/8in  
Filter Dryer Hose



The SPDKIT-R includes  
the New Appion  
MegaFlow Tool Bag



\*Filter Dryer  
not included

### Want Fast and Simple Recovery?

With the MegaFlow™ Speed-Y, fast recovery is simpler than ever. No manifold, no tangle of hoses, and reduced connections. The Speed-Y enables Full Flow to any recovery unit, without all the hassle of a manifold.

Learn More At  
[www.AppionTools.com/SPDKITR](http://www.AppionTools.com/SPDKITR)

## The Greater the **Flow** . . . the **Faster** it'll Go!

The MegaFlow **SpeedKit-R** makes it easy to hook-up multiple connections to the input of a recovery unit. The kit contains **(1) 1/4in FL Speed-Y** and **(1) 3/8in 1ft Filter Dryer Hose**. The Speed-Y has (2) 3/8in male flare fittings to attach multiple service hoses and (1) 1/4in female flare fitting to attach to the filter dryer or directly to the recovery unit. The Speed-Y is **Vacuum Rated to 20 microns** and designed for **high pressure refrigerants**, such as **R410a**.

The MegaFlow **Valve Core Removal Tools** included in the SpeedKit-R work with both **Standard 1/4in Systems** and **Ductless 5/16in Systems**. Always remove valve cores from the system for **Full Flow and Fast Recovery**.

The SpeedKit-R Features **(2) 3/8in 6ft 3/8in to 1/4in fitting MegaFlow Vacuum-Rated Recovery Hoses**(1 red and 1 blue), **(1) 3/8in 4ft 1/4in to 1/4in MegaFlow Vacuum-Rated Recovery Output Hose**(yellow).

### Are your Tools Vacuum-Rated?

Tools and fittings that aren't Vacuum- Rated can leak under deep vacuum. The MegaFlow Speed-Ys are Vacuum-Rated to 20 microns, giving you the peace of mind that your tool isn't going to leak in a deep vacuum.

Recovery

5/16in System Connections

1/4in System Connections



# TEZ8<sup>TM</sup>

CFM  
TWO STAGE VACUUM PUMP

Evacuation



Save Hours, Save Days, Save Money



Fast and Easy  
On-the-Fly  
5-Second Oil Change



Easy to monitor Evacuation  
progress with  
Clearly. Visible. Results.

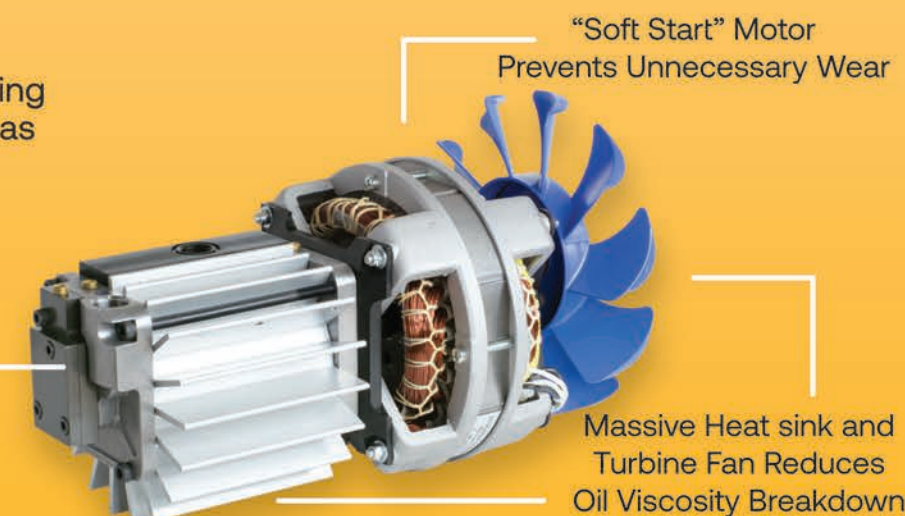
## Did You Know:

You **may** have to change your Vacuum Pump Oil 10 times in the first 15 mins of the job . . . **If you want to go Fast**

The **TEZ8** was the first Vacuum Pump designed from the ground up with the needs of a **AC/R Technician in mind**. From the Multi-Port Input Tree to the **5-Second Oil Change<sup>TM</sup>**, every aspect of the TEZ8 is designed for the Fastest Evacuation. With **Clean Oil** and **Full Flow** the TEZ8 can Save **Hours**, Save **Days**, Save **Money**.

- ▶ Faster Evacuation - Field-proven to outperform larger, belt-driven pumps by hours or days
- ▶ Adjustable Multi-Port Input - Multiple connections to 1/2in and dual 3/8in inputs for maximum flow
- ▶ Two-stage Exhaust System: Vents breaking the vacuum, no gas ballast needed
- ▶ "Soft Start" Motor - Reliable starting in extreme ambient conditions - as low as -40°F
- ▶ Turbine fan and massive aluminum heat sink keeps the pump and oil cool reducing oil viscosity breakdown
- ▶ Advanced "anti-suckback" eliminates check valves and other flow restrictions
- ▶ Lightweight composite resin case for rugged durability and reduced weight

Durable, All Metal  
Pump construction



### TEZ8 Time Savings\*

Job Type	Before	With TEZ8
Server Room	4 Days	7 Hours
Rack System	23 Hours	2 Hours
1500-Ton Chillers	2 Weeks	26 Hours
VRF (168,000 BTUHs)	2 Days	2 Hours

\*Real job-site testimonials. Results may vary. Evacuation speeds are affected by numerous variables.

TEZ8	Product Specifications
Free Air Displacement	8cfm (227 l/m) @ 60 Hz
Ultimate Vacuum	<20microns
Inlet Port Fittings	1/4in, 3/8in(x2), 1/2in

Learn More At  
[www.AppionTools.com/TEZ8](http://www.AppionTools.com/TEZ8)

Appion

AC/R Product Catalog

Appion Inc

Appion

Part# TEZ8 10

9 Part# TEZ8

Evacuation



# Appion Ultimate Seal Vacuum Pump Oil

Evacuation



Improve the performance of **ANY** Pump

- ▶ Synthetic Blend **improves vacuum pump performance and greater protection** for internal pump components
- ▶ **Ultra-low vapor pressure** oil (<1 microns) for superior vacuum sealing performance
- ▶ Faster evacuation of systems that use **POE oil (including R410a)**
- ▶ Advanced Synthetic Blend keeps **ambient moisture out**. No cap seal, No Problem

## TEZOM Oil Cartridge System for the TEZ8 Vacuum Pump

- ▶ **5-Second Oil Change™** - Change the oil On-The-Fly.
- ▶ Clean and Dry - Quick and easy oil change removes moisture and dirt, **preventing long-term sludge buildup**
- ▶ **Clearly. Visible. Results.** - Clear cartridge makes it easy to monitor the condition of the oil and the system

Learn More At  
[www.AppionTools.com/TEZOM](http://www.AppionTools.com/TEZOM)



# Appion MegaFlow Recovery and Evacuation Hoses

Recovery

Evacuation



Large Diameter, **Vacuum-Rated** Hoses

- ▶ **Large Interior Diameters** - The Greater the Flow the Faster it'll Go!
- ▶ **Vacuum-Rated** to 20 Microns
- ▶ **Won't permeate or collapse** in a vacuum
- ▶ 1/2in hoses allow up to **16x more flow** than restrictive 1/4in charging hoses

Part Number	ID	Length	Fittings	Color
MH120006EAK	1/2 in	6 ft	3/8 in FL x 1/4 in FL	Black
MH380006EAB	3/8 in	6 ft	3/8 in FL x 1/4 in FL	Blue
MH380006EAR	3/8 in	6 ft	3/8 in FL x 1/4 in FL	Red
MH380006AAY	3/8 in	6 ft	1/4 in FL x 1/4 in FL	Yellow
MH380004AAY	3/8 in	4 ft	1/4 in FL x 1/4 in FL	Yellow

All **NEW** Hose Hanger Available in 1/4in to 1/4in and 3/8in to 1/4in

Learn More At  
[www.AppionTools.com/MegaFlow](http://www.AppionTools.com/MegaFlow)





# MegaFlow

BASICS

Evacuation

1/4in System Connections



1/4in

MGABAS

For 1/4in Standard Fittings

## Fast Evacuation Made Simple

The **MegaFlow Basics Kits** help a technician remove restrictive valve cores and perform AC/R system evacuations up to **10x Faster**. Available in **Standard 1/4in** and **Ductless 5/16in** variations. These Basics Kits include (1) **6ft, 1/2in Hose** with a 1/4in FL and a 3/8in FL. (1) Valve Core Removal Tool either **1/4in(MGABAS)** or **5/16in(MGABRO)**.

With these **AC/R Evacuation Essentials**, your vacuum pump can finally reach it's true potential.

### Why remove valve cores?

Valve cores are designed to **restrict flow** and minimize refrigerant loss. **Removing them maximizes flow** and can save hours on any job.

### Tired of lengthy evacuations?

Evacuating **through** a valve core and core depressor can reduce the potential flow to as little as **0.2 cfm** regardless of vacuum pump size



AC/R Product Catalog

13 Part# MGABAS

# MegaFlow

BASICS

Evacuation

5/16in System Connections

5/16in



MGABRO

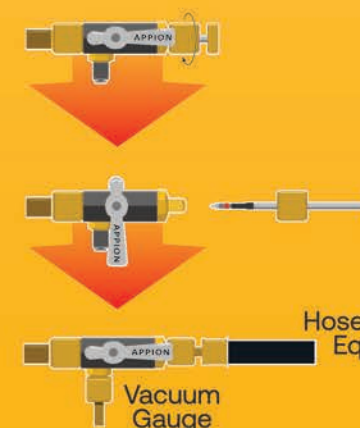
For 5/16in Ductless Fittings

- ▶ Vacuum-Rated Valve Core Removal Tool removes restrictive cores
- ▶ Opens up over 90% of internal diameter of access port
- ▶ Large diameter, Vacuum-Rated, 1/2in evacuation hose
- ▶ Allows up to 16x more flow than 1/4in hose

Evacuating a 10-ton system to 500 microns

6-ft, 1/4" hose through valve core	40 min.
6-ft, 1/4" hose & core removed	19 min.
6-ft, 1/2" hose & core removed	3 min.

NIST-traceable results. All connections made with 1/4in FL fittings. Contact Appion Inc. for more information.



Learn More At  
[www.AppionTools.com/MGABAS](http://www.AppionTools.com/MGABAS)



Part# MGABRO 14

Appion Inc





## Hello 2020, New Year New Products

Recovery

Evacuation

Recovery

Evacuation

The **Ultimate Fast Evacuation Kit.**  
Works with most vacuum pumps and 1/4in AND 5/16in System Connections

FAST EVACUATION KIT  
**SPEEDKIT-V**  
pg 17



SPDY14

pg 27

MH380001BAB



pg 7



HH14

pg 14



HH1438

pg 14



SPDY12

pg 27



SPDY38

pg 27

FAST RECOVERY KIT  
**SPEEDKIT-R**  
pg 7



The **Ultimate Fast Recovery Kit.**  
Manifold-less recovery has never been easier.  
Works on both 1/4in and 5/16in System Connections

Snag some **New Appion Products Today,**  
the **Pre-Order** window is closing **FAST!**

Be the first . . . the First to FAST!  
Visit Us at

[www.AppionTools.com/PreOrder](http://www.AppionTools.com/PreOrder)



Follow us on Social Media for **New Product Announcements,** the year is just getting started and so are we!



@AppionTools



@AppionTools



@AppionTools



FAST EVACUATION KIT

# SPEEDKIT-V

The Greater the **Flow** . . . the **Faster** it'll Go!

The MegaFlow **SpeedKit-V** makes it easy to hook-up multiple **simultaneous** connections. The kit contains **(1) 3/8in FL and (1) 1/2in FL Speed-Y**. Both Speed-Y's have **(2) 3/8in MFL fittings** and are **Vacuum-Rated to 20 Microns**. Between both Speed-Y's, the **SpeedKit-V** will work on most vacuum pumps.

The MegaFlow **Valve Core Removal Tools** included in the SpeedKit-V work with both **Standard 1/4in Systems** and **Ductless 5/16in Systems**. Always remove valve cores from the system for **Full Flow and Fast Evacuation**.

The SpeedKit-V Features **(2) 1/2in 6ft MegaFlow Vacuum-Rated Evacuation Hoses**. These Vacuum-Rated hoses **won't permeate or collapse in a deep Vacuum**. With a Large Interior Diameter these MegaFlow hoses have **Greater Flow** than standard 3/8in hoses.

Multiple inputs and large diameter hoses allow a vacuum pump to operate at full capacity. Hose diameter can dramatically impact evacuation times!

Evacuating a 10-ton system to 500 microns	
6-ft, 1/4" hose through valve core	40 min.
6-ft, 1/4" hose & core removed	19 min.
6-ft, 1/2" hose & core removed	3 min.

NIST-traceable results. All connections made with 1/4in FL fittings.  
Contact Appion Inc. for more information.

Maximize the Flow of **ANY** Vacuum Pump



Vacuum Rated to 20 microns

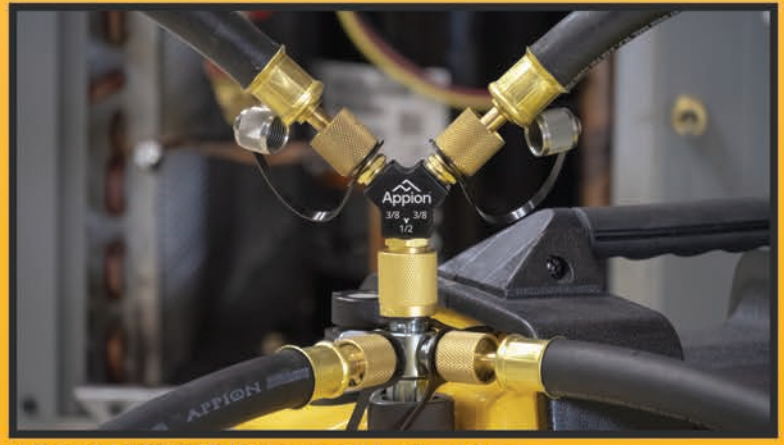
Featuring the **All NEW** Speed-Y



Easy Simultaneous Connections



The SPDKIT-V includes the New Appion MegaFlow Tool Bag



\* Extra MH12000EAK hoses sold separately

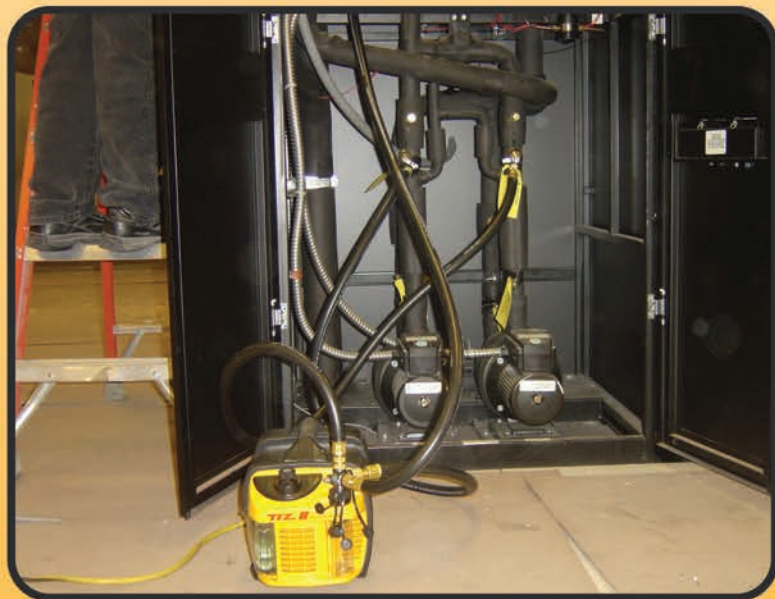


Learn More At [www.AppionTools.com/SPDKITV](http://www.AppionTools.com/SPDKITV)

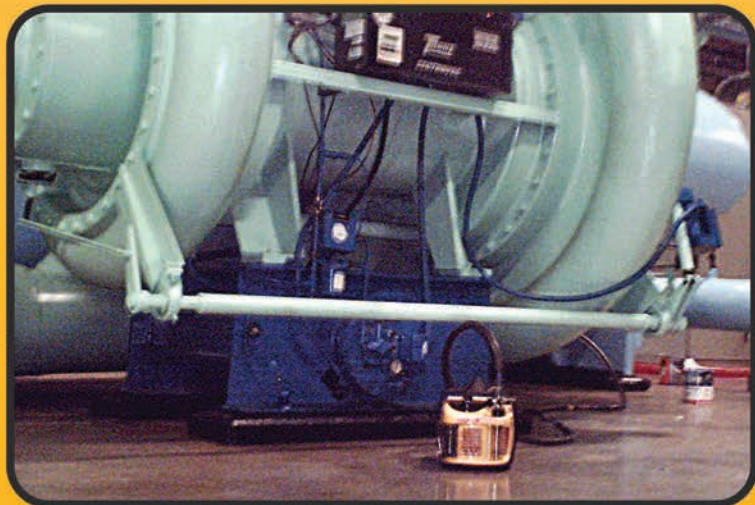


## AC/R System Evacuation in **1 day or less**, with the **TEZ Speed System**

Below - On a critical Server Room job at Duke University, the **TEZ8** (with 3 x 1/2in hoses) cut the job time from four days to **less than 7 hours**.



Below - Thanks to massive flow and **On-the-Fly oil changes**, in just **26 hours** the **TEZ8** evacuated six 1500-ton chillers, one at a time, to **500 microns**... outperforming a 20-cfm belt driven pump.



Above - This 2,000 ton chiller was pulled from atmosphere to **1,000 microns** in only **3.5 hours**, instead of days with a belt-driven pump.

## 5x - 10x Faster Evacuation

The **TEZ Speed System**, using multiple **3/8in and 1/2in connections**, can deliver a time savings ratio of at least **5-to-1** (up to 10-to-1) on **residential, commercial and industrial** job sites compared to 1/4in connections.

So for every **5-10 hours** that you currently spend evacuating, the **TEZ Speed System** can do it in **1 hour or less**.

Learn More At  
[www.AppionTools.com/TEZ8](http://www.AppionTools.com/TEZ8)

Learn More At  
[www.AppionTools.com/SPDKIT-V](http://www.AppionTools.com/SPDKIT-V)

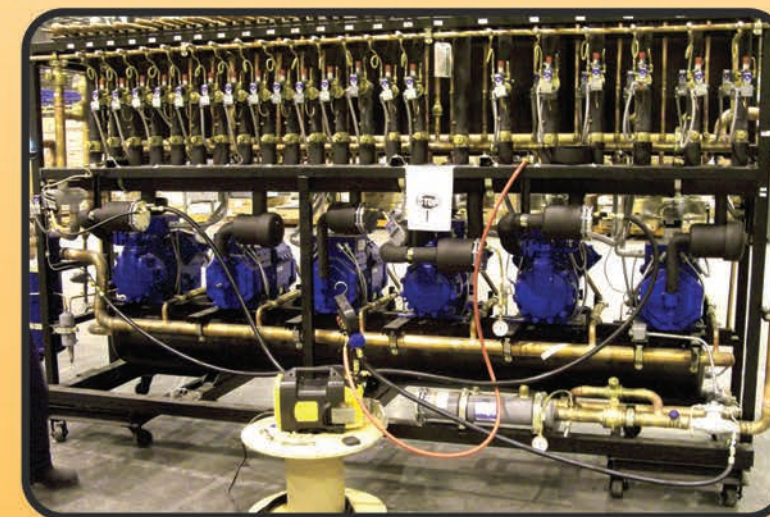
Appion

AC/R Product Catalog

Appion Inc

## Save Hours, Save Days, Save Money

Below - With **five simultaneous** full-flow connections, the **TEZ Speed System** evacuates racks like these up to **10 x faster** than typical vacuum pumps.



Below - Without the **TEZ Speed System** this job used to take 2 days. Evacuating this single condenser VRF unit with 6 evaporators (168,000 BTUHs) and 600ft of lineset **only took 2 hours**



Appion

Part# SPDKIT-V 20



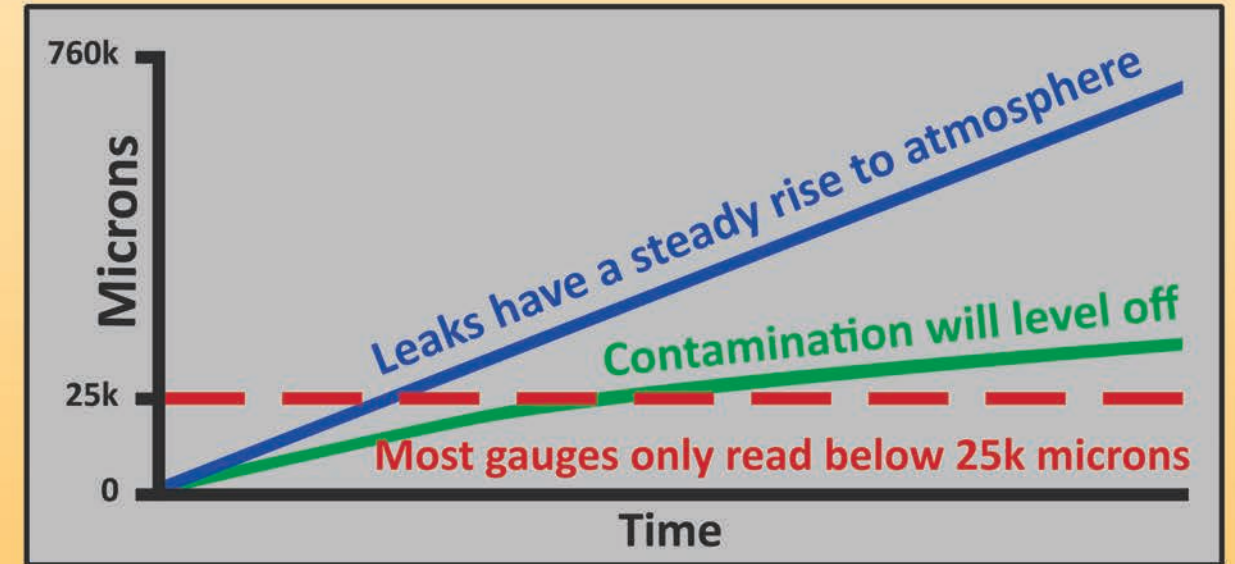
# AV760

Full Range Vacuum Gauge



Gauge shown at actual atmospheric pressure in Denver, CO

## Full Range Vacuum Measurement and Why it Matters



Full Range Vacuum Measurement is crucial to any evacuation. Other vacuum gauges begin measuring at 25,000 microns, only measuring the last 3% of the evacuation process. **Have you ever verified a complete evacuation?** You may think you have, but without verifiable results you can't be sure.

The **AV760** gives you the means to track your entire evacuation, the ability to know the difference between a system leak and the presence of contaminants. This complete visibility gives you accurate, **verifiable results and confidence that the job is done right.**

## Accurate Measurement from Atmosphere to 1 micron



Remote, **Real-Time** Measurements



Built to **Withstand** Real-World Conditions

	AV760
Range	760,000 microns to 1 micron
Accuracy	±5% or 10 microns (1 to 5k) ±5% (5k to ATM)
Calibration Points	10-point NIST-Traceable
Resolution	1 micron (1-499), 5 (500-2k) 50 (2k-5k), 250 (5k - 15k) 1k (15k - ATM)
Maximum Overpressure	400 PSI
Fitting	1/4in Male SAE Flare
Units	Microns, mTorr, kPa, mBar, in/Hg, psia

- **Full Range Response** - Unprecedented accurate measurements from atmosphere to 1 micron
- **Oil Protection** - Filter and Oil catch keep sensors clean and maintain accurate measurement
- **Durable** - Rubberized water-resistant housing (IP65 Rated)
- **Advanced System Analysis** - Superheat and Subcool Calculations, Reporting, and more with the Appion Central App

Learn More At  
[www.AppionTools.com/AV760](http://www.AppionTools.com/AV760)





# Ion Gauge

Pressure and Temperature Gauge Set



## ION PT Gauge Set (Part # IONKIT-PT)

### Contents include-

- 1 PT500
- 1 PT800
- 2 Thermal Clamps
- 2 Thermal Sensors
- 1 1/4in Charging-T Fitting
- 1 Angled Connector
- 1 Carrying Case

- **View Multiple, Simultaneous Measurements** - Low Side, High Side and Temperature
- **Digital Stub Gauges** - Minimize charge loss; perfect for Critical Charge applications
- **Minimized Thermal Mass** - Compact, stainless steel clamp for durability and easy placement

- **Thermally-Isolated Contact Sensor** - Reduced thermal mass for greater accuracy
- **Advanced System Analysis** - Easy Superheat and Subcool calculations, reporting, and more with the Appion Central App

## Digital Stub Gauges - No Hoses, No Manifold



Remote, **Real-Time** Measurements



Built to **Withstand** Real-World Conditions

	PT500	PT800
Range	Compound 29 inHg - 500 PSI	0 - 800 PSI
Accuracy	±5% FS (ASME B40.7 Grade 2A)	±5% FS (ASME B40.7 Grade 2A)
Resolution	0.5 PSI	0.5 PSI
Units	PSI, inHg, kg/cm <sup>2</sup> , cm/Hg, bar, kPa, MPa	PSI, kg/cm <sup>2</sup> , bar, kPa, MPa
Maximum Overpressure	750 PSI	1,000 PSI

### Temperature Sensors

Sensor Type	NTC Thermistor
Working Temperature	-40 - 225° F (-40 - 105° C)
Accuracy	± 0.27° F (0.15° C) 32-122° F (0 - 50° C)
Resolution	0.1° F/C
Cable Length	79 in (2m)
Cable Opening	0.25 - 1.5 in OD

Learn More At  
[www.AppionTools.com/IONKIT](http://www.AppionTools.com/IONKIT)

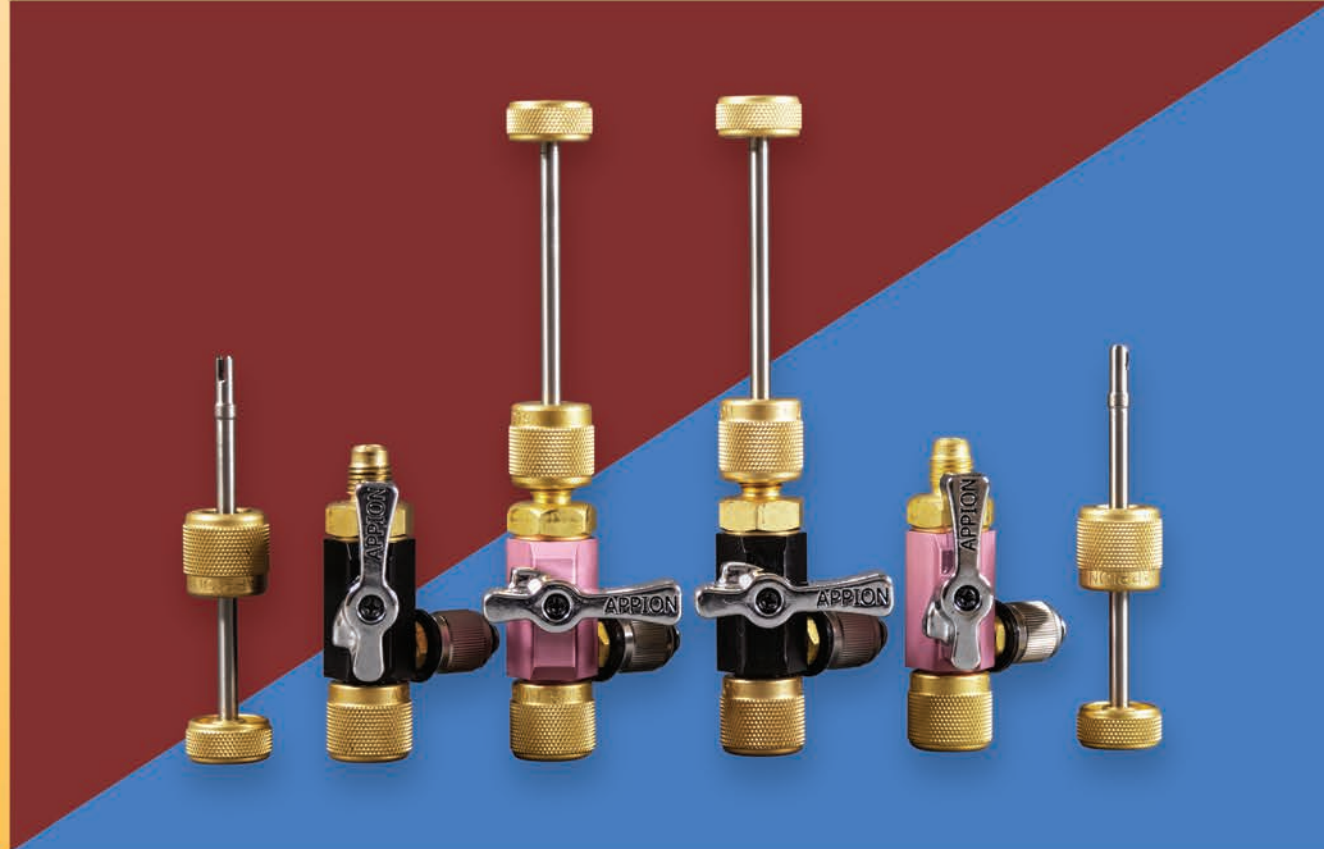




# Valve Core Removal Tool

Evacuation

Recovery

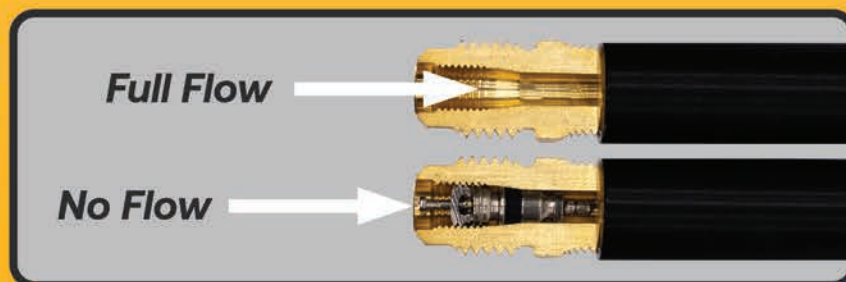


## Vacuum-Rated Valve Core Removal Tools

### Why remove valve cores?

Valve cores are designed to **restrict flow** and minimize refrigerant loss. **Removing them maximizes flow** and can save hours on any job.

**Up to 90%** of the access port can be restricted by a valve core.



### Hot Tanks and Slow Recovery?

A valve core acts like an expansion valve - turning liquid into vapor - which causes the tank to heat up and leads to painfully slow recovery times.

### Tired of Slow Evacuations?

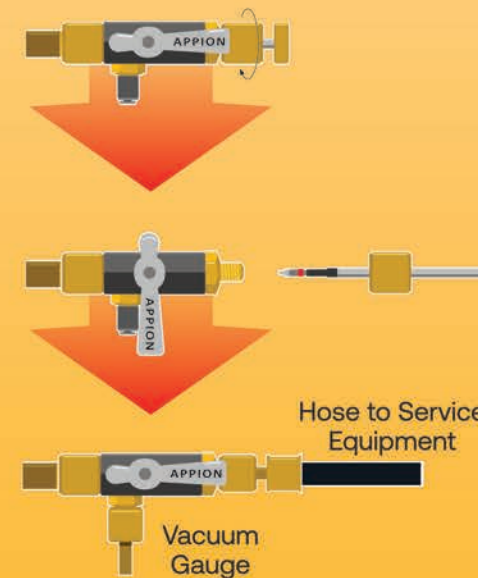
Evacuating through a valve core and core depressor can reduce the potential flow of any vacuum pump to as little as 0.2 cfm.



MGAVCT



MGA VCR



- ▶ Remove restrictive valve cores for **high speed** recovery and evacuation
- ▶ Available with a **1/4in(MGAVCT)** or **5/16in(MGA VCR)** system side connection
- ▶ Vacuum-Rated down to **20 microns**
- ▶ Double O-ring seal on the ball valve handle for **accurate "blank off" vacuum testing**
- ▶ **1/4in Side Port** for service gauges
- ▶ Designed for high pressure refrigerants including R410a

Evacuation

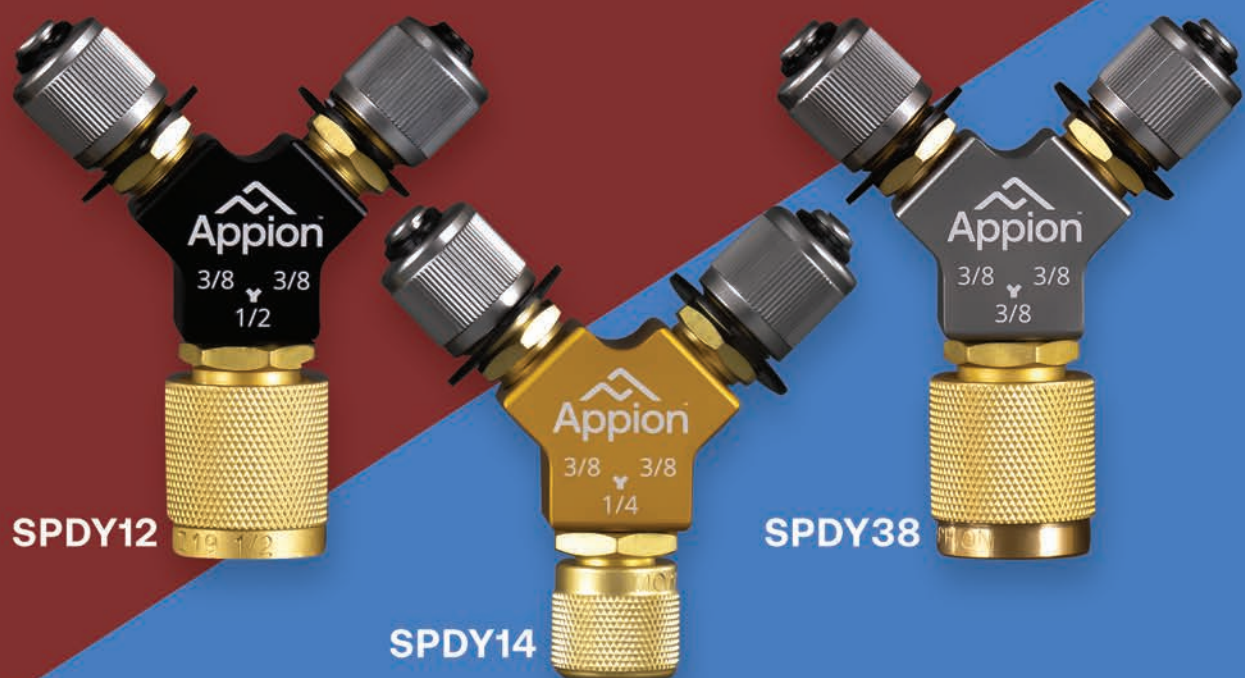
Recovery





# High Speed Y Fitting SPEED-Y

All NEW



## Faster Evacuation and Recovery with ANY machine

The Appion MegaFlow Speed-Y comes in 3 different sizes, each featuring 2 male 3/8in Flare fittings for service hoses. Available in 1/4in(SPDY14), 3/8in(SPDY38), and 1/2in(SPDY12) female flare sizes, the Speed-Ys can fit many applications. Built with Premium Aircraft Grade Aluminum Bodies and Caps, each Speed-Y has a plug to keep out contaminants and moisture.

### Working on Large Multi-Port Systems?

With the MegaFlow Speed-Y, vacuum pumps with only a few ports are no longer limited. Easily connect multiple hoses to a single port. The Greater the Flow . . . The Faster it will Go!

The Speed-Ys are part of the All New SPDKITs. Check it out on pgs 7 & 17



## Why use a Speed-Y instead of a Manifold?

Traditional Charging Manifolds suffer from a few shortcomings; highly restrictive, not designed for deep vacuum and a lot of potential leak points.



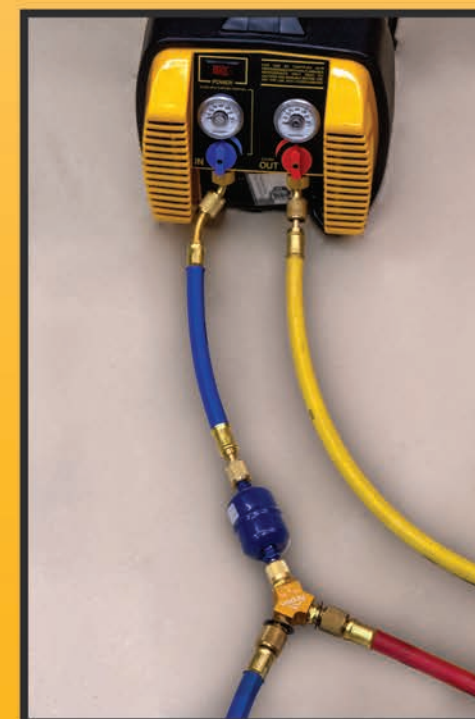
The MegaFlow Speed-Y features a large inner diameter for unrestricted Full Flow, and are Vacuum-Rated to 20 microns with a reduced number of leak points. The Speed-Y makes it easy to connect multiple hoses to a single point without the drawbacks of the traditional manifold.

### Want Fast and Simple Recovery?

With the MegaFlow™ Speed-Y, fast recovery is simpler than ever. No manifold, no tangle of hoses, and reduced connections. The Speed-Y enables Full Flow to any recovery unit, without all the hassle of a manifold.



Learn More At  
[www.AppionTools.com/SpeedY](http://www.AppionTools.com/SpeedY)



### Are your Tools Vacuum-Rated?

Tools and fittings that aren't Vacuum-Rated can leak under deep vacuum. The MegaFlow Speed-Ys are Vacuum-Rated to 20 microns, giving you the peace of mind that your tool isn't going to leak in a deep vacuum.





Product Index

Recovery and Evacuation Pumps

G1Single	G1Single Recovery Unit
G5Twin	G5Twin Recovery Unit
TEZ8	TEZ8 Vacuum Pump - 8cfm

Digital Measurement

AV760	Full Range Vacuum Gauge
PT500	Compound 29inHG to 500PSI Wireless Pressure and Temperature Gauge
PT800	0 to 800PSI (High Side) Wireless Pressure and Temperature Gauge
P300	0-300PSI Wireless Pressure Gauge
IONKIT-PT	Digital Pressure and Temperature Gauge Kit

Hoses and Hose Kits

HH14	MegaFlow 1/4in to 1/4in Hose Hanger
HH1438	MegaFlow 1/4in to 3/8in Hose Hanger
MGABAS	MegaFlow Basics 1/2in Hose Evacuation Kit - For 1/4in System Connections
MGABRO	MegaFlow Basics 1/2in Hose Evacuation Kit - For 5/16in System Connections
MH120006EAK	MegaFlow 1/2in Evacuation Hose - Black 6ft 3/8in FL to 1/4in FL
MH380001BAB	MegaFlow 3/8in Filter Dryer Hose - Blue 1ft 1/4in FL to 1/4in 45° FL
MH380004AAY	MegaFlow 3/8in Output Recovery Hose - Yellow 4ft 1/4in FL to 1/4in FL
MH380006AAY	MegaFlow 3/8in Recovery Hose - Yellow 6ft 1/4in FL to 1/4in FL
MH380006EAB	MegaFlow 3/8in Recovery Hose - Blue 6 ft 3/8in FL to 1/4in FL
MH380006EAR	MegaFlow 3/8in Recovery Hose - Red 6ft 3/8in FL to 1/4in FL
SPDKIT-R	MegaFlow Fast Recovery Kit
SPDKIT-V	MegaFlow Fast Evacuation Kit

Vacuum Pump Oil

TZM1PK	TEZOM Oil Cartridge
TZMGLN	TEZOM Oil Gallon

**Factory Support Items**  
Any items not found in this index(ex. case screws, rubber feet, capacitors, etc) are available through Appion. Please contact us via email at support@appiontools.com or via phone at (303) 936-1580 with any questions.

Product Index

Service Tools

MGAVCR	MegaFlow Valve Core Removal Tool - 5/16in
MGAVCT	MegaFlow Valve Core Removal Tool - 1/4in
CTEE14	MegaFlow Low-Loss Charging T-Fitting - 1/4in
CTEE516	MegaFlow Low-Loss Charging T-Fitting - 5/16in
VFL45L	MegaFlow 4in 45° Vacuum-Rated Connector - (2) 1/4in Female Flare Swivel
VFL90L	MegaFlow 4in 90° Vacuum-Rated Connector - (2) 1/4in Female Flare Swivel
PK7520	MegaFlow Tool Bag/Backpack

Repair Kits and Parts

AY0036	Blue Fan Gearbox Assembly with Fan Blade
KT11AA-R	MegaFlow Hose Gasket 10 Pack - 1/4in FL
KT11EE-R	MegaFlow Hose Gasket 10 Pack - 3/8in FL
KT11GG-R	MegaFlow Hose Gasket 10 Pack - 1/2in FL
KT2110-R	Vacuum Gauge Oil Catch Filters - 10 pack plus 2 Fitting O-rings
KTF645	G5Twin 1/4in Angled Fitting Retrofit Kit
KTG166-R	Compressor Repair Kit - G1Single
KTG520-R	Compressor Repair Kit - G5Twin
KTG535	Front Ball Valve Seal Replacement Kit - G5Twin
KTGA00	Gauges 2 Pack for G5Twin/G1Single
KTMV25	Valve Core Removal Tool Rebuild Kit - 2 Pack
KTMV40	Valve Core Tool Body Swivel Fitting O-Ring Kit: 10 Pack
KTT840-R	TEZ8 External Maintenance Kit
KTT881-R	TEZ8 Internal Rebuild Kit

**Warranty Information**  
For complete warranty details, visit our website at [www.AppionTools.com/warranty](http://www.AppionTools.com/warranty)  
Appion warranty coverage\* includes the following -  
**Recovery Machines, Vacuum Pumps, and Wireless Digital Gauges**  
- Warranty coverage includes over-the-counter exchanges for 90 days after purchase, and no charge repairs for 1 year after purchase.  
**Components and Accessories**  
- Warranty coverage includes over-the-counter exchanges for 90 days after purchase.



\*Warranty coverage requires prior authorization. please [www.AppionTools.com/warranty](http://www.AppionTools.com/warranty) for more information on the warranty process





**Follow us on Social Media for  
News, Product Announcements,  
Pro-Tips, and More!**

 @AppionTools

 @AppionTools

 @AppionTools





**Appion Inc,**  
2800 S Tejon St  
Englewood, CO  
303-937-1580

**[www.AppionTools.com](http://www.AppionTools.com)**