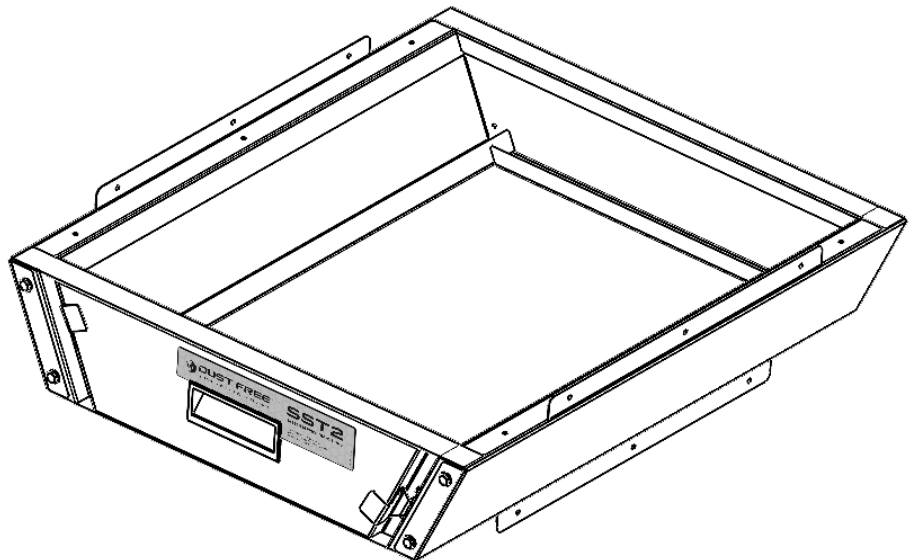
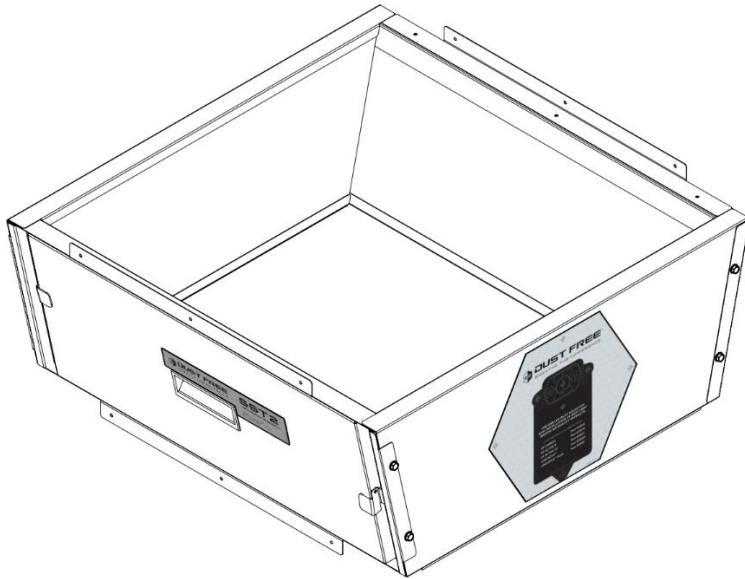


DUST FREE[®] SST2

System Service Transition

Installation & Operation Manual



GENERAL

This product serves as a transition between the evaporator coil and the furnace heat exchanger, which helps to maintain a smooth flow transition and facilitates the proper maintenance of the coil over time.

BEFORE INSTALLING

- Read all instructions carefully. Failure to do so could damage the equipment or cause harm to yourself or others.
- Acknowledge all warnings.
- Only qualified technicians should perform the installation.

U.S. Patent Nos. 9267702; 10151507

Canadian Patent Nos. 2,865,781; 2,835,898

Additional Patents Pending

INCLUDED INSIDE BOX

- (1) – Rear Panel
- (1) – Door Frame
- (2) – Side Panels
- (1) – Door
- (9) – No. 10 x 3/8" Assembly Screws
- (13) – No. 10 x 5/8" Mounting Screws
- (1) – Installation Instructions

This manual covers the following models:

SST2 AA - #19830	SST2 AA Closet- #19840
SST2 AB - #19831	SST2 AB Closet- #19841
SST2 AC - #19832	SST2 AC Closet- #19842
SST2 BB - #19833	SST2 BB Closet- #19843
SST2 BC - #19834	SST2 BC Closet- #19844
SST2 BD - #19835	SST2 BD Closet- #19845
SST2 CC - #19836	SST2 CC Closet- #19846
SST2 CD - #19837	SST2 CD Closet- #19847
SST2 DD - #19838	

INCLUDED INSIDE BOX

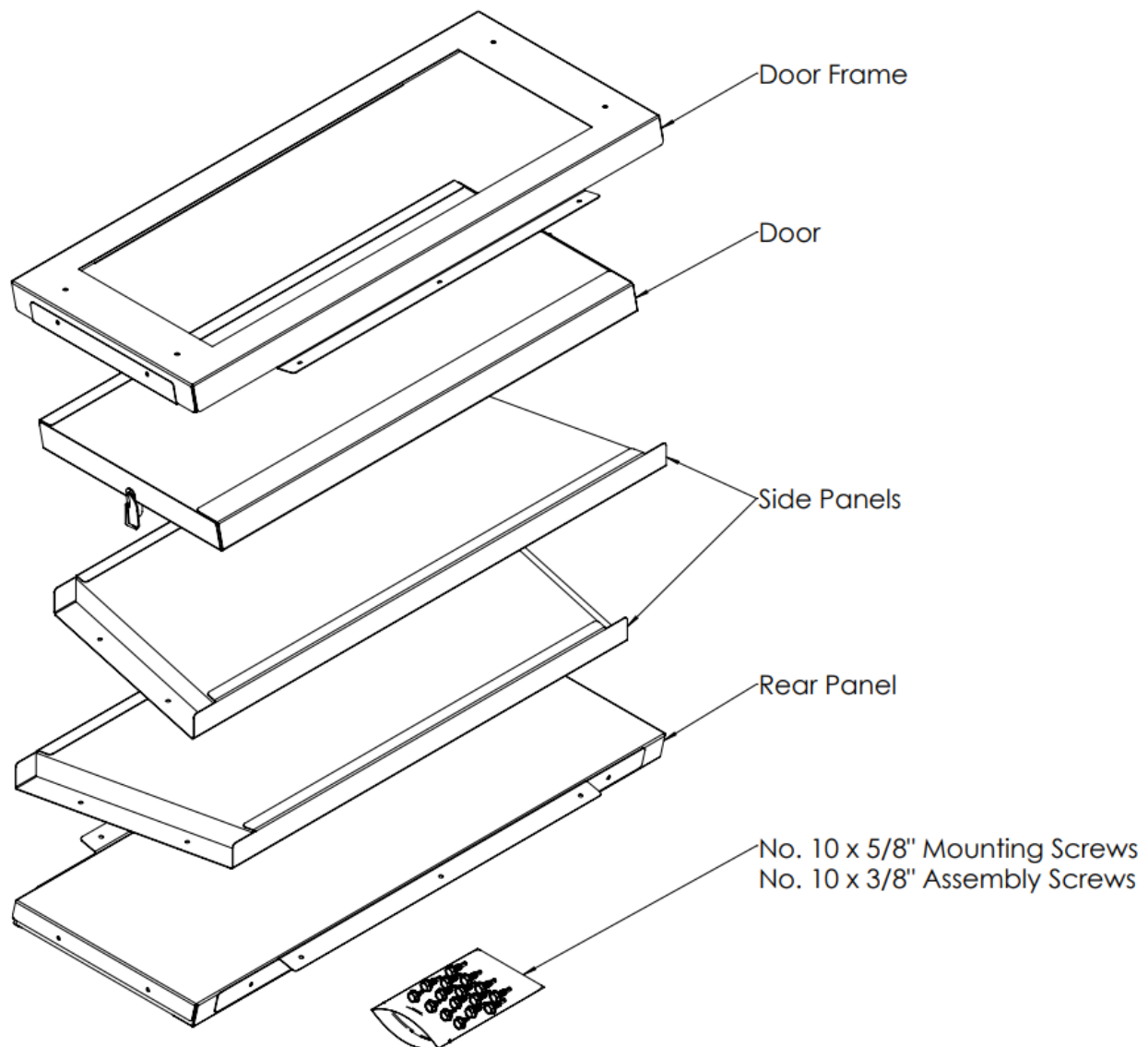


Figure 1: Components included inside the box.

SPECIFICATIONS

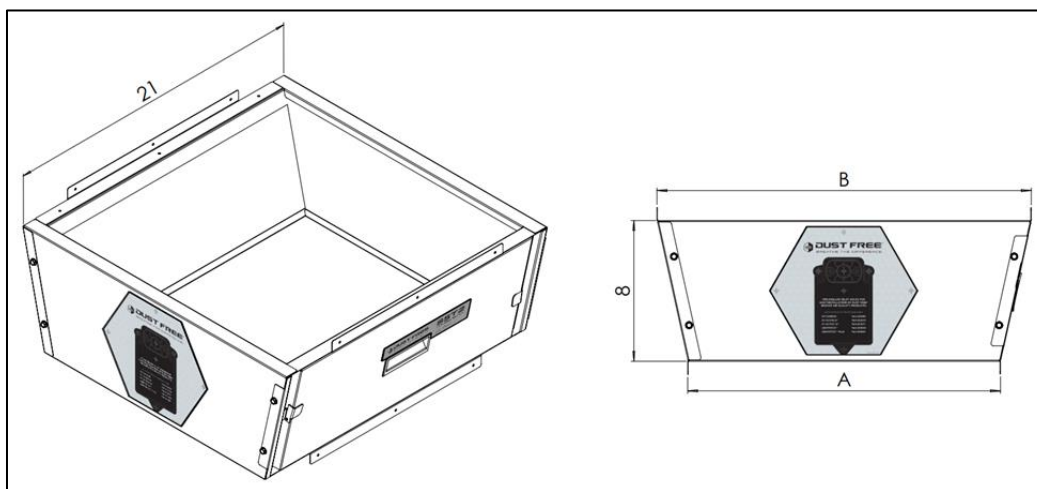


Figure 2: Side Access Unit dimensions.

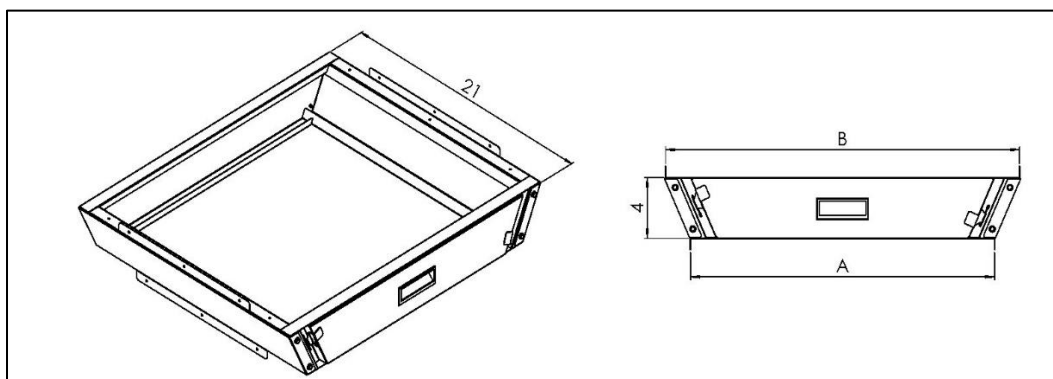


Figure 3: Closet Access Unit dimensions

Model	Dimension "A" (in.)	Dimension "B" (in.)	Packaged Weight (lbs.)
SIDE ACCESS- AA	14	14 ¼	9
SIDE ACCESS- AB	14 ¼	17 ¾	9.5
SIDE ACCESS- AC	14 ¼	21 ¼	9.5
SIDE ACCESS- BB	17 ½	17 ¾	9.5
SIDE ACCESS- BC	17 ¾	21 ¼	10
SIDE ACCESS- BD	17 ¾	24 ¾	10
SIDE ACCESS- CC	21	21 ¼	10
SIDE ACCESS- CD	21 ¼	24 ¾	10.5
SIDE ACCESS- DD	24 ¾	24 ¾	10.5
CLOSET ACCESS- AA	14	14 ¼	9
CLOSET ACCESS- AB	14 ¼	17 ¾	9.5
CLOSET ACCESS- AC	14 ¼	21 ¼	9.5
CLOSET ACCESS- BB	17 ½	17 ¾	9.5
CLOSET ACCESS- BC	17 ¾	21 ¼	10
CLOSET ACCESS- BD	17 ¾	24 ¾	10
CLOSET ACCESS- CC	21	21 ¼	10
CLOSET ACCESS- CD	21 ¼	24 ¾	10.5

ADDITIONAL SPECIFICATIONS

- Lined with foil-backed R4 insulation
- 24-gauge galvanized steel construction
- Ships in collapsed configuration for easy transport

REQUIRED TOOLS

- Electric drill
- 5/16" hex head tool bit
- Tin snips / scissors / knife
- Foil tape

INTRODUCTION

The Dust Free SST2 System Service Transition unit is designed to provide a smooth transition between the evaporator coil and the furnace heat exchanger within the HVAC system, reducing airflow restrictions and increasing overall system efficiencies. The unit can be installed in closet, upflow, and horizontal applications and with box or slab coils. The removable latching door allows for easy access to the coil and heat exchanger to make regular inspection, maintenance, and cleaning quicker and easier.

ASSEMBLY

The Dust Free SST2 System Service Transition sections are designed to slide together for easy assembly. Carefully follow these instructions to ensure satisfactory fit and performance of the unit.

1. Remove the banded components from the box. Using tin snips or scissors, cut and dispose of the bands.
2. Place the rear panel on a firm surface. Align and insert one side panel into the rear panel, inside the flange as depicted in **Figure 3**.
3. Secure the rear panel to the side panel using the supplied **No. 10 x 3/8"** screws in the aligned pre-drilled holes as shown in **Figure 4**.

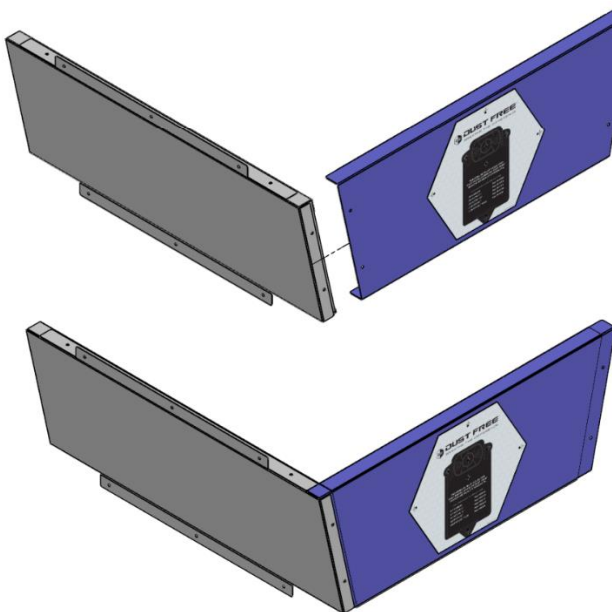


Figure 3: Side and rear panel alignment and assembly.

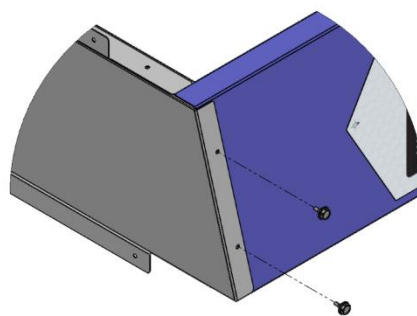


Figure 4: Secure rear panel to side panel with supplied No. 10 x 3/8" screws.

4. Align and insert the remaining side panel into the rear panel, inside the flange as depicted in **Figure 5**.
5. Secure the rear panel to the side panel using the supplied **No. 10 x 3/8"** screws in the aligned pre-drilled holes as shown in **Figure 6**.

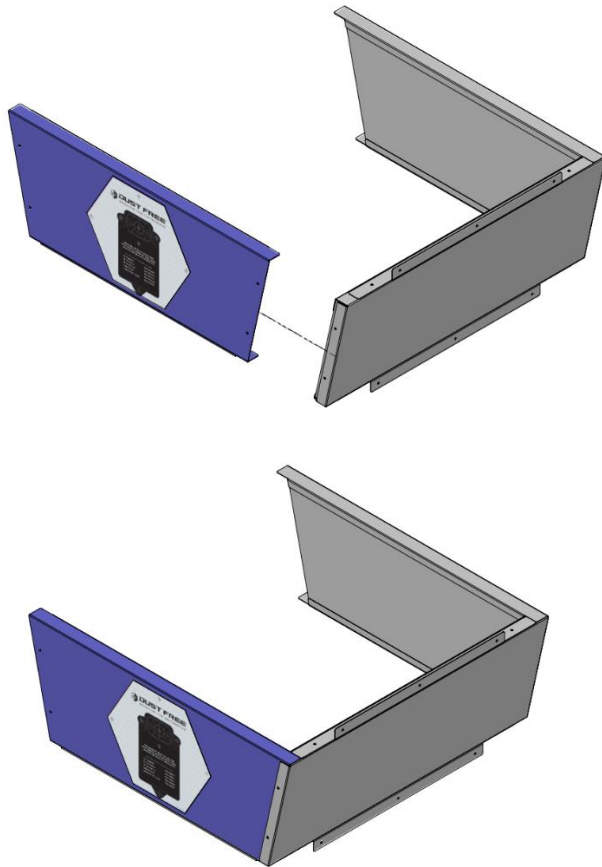


Figure 5: Remaining side and rear panel alignment and assembly.

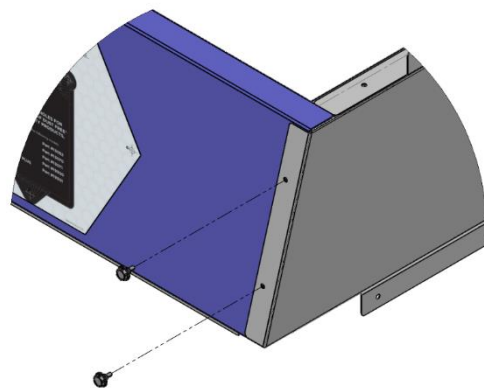


Figure 6: Secure rear panel to side panel with supplied No. 10 x 3/8" screws.

6. Remove the door from the door frame. Align and insert the door frame into the side panels, with flanges outside the side panel as shown in **Figure 7**.
7. Secure the door frame to the side panels using the supplied **No. 10 x 3/8"** screws in the aligned pre-drilled holes as depicted in **Figure 8**.

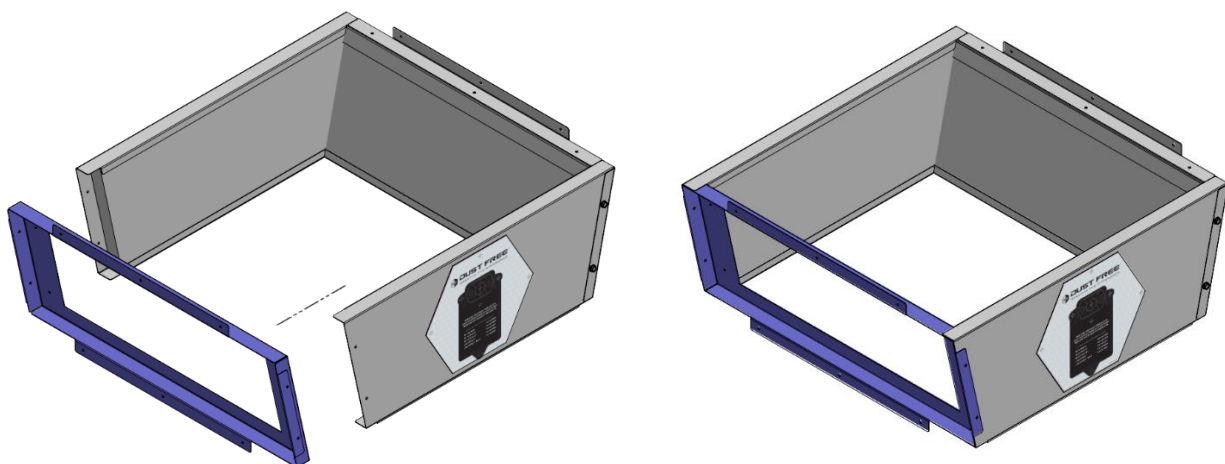


Figure 7: Door frame and unit alignment and assembly.

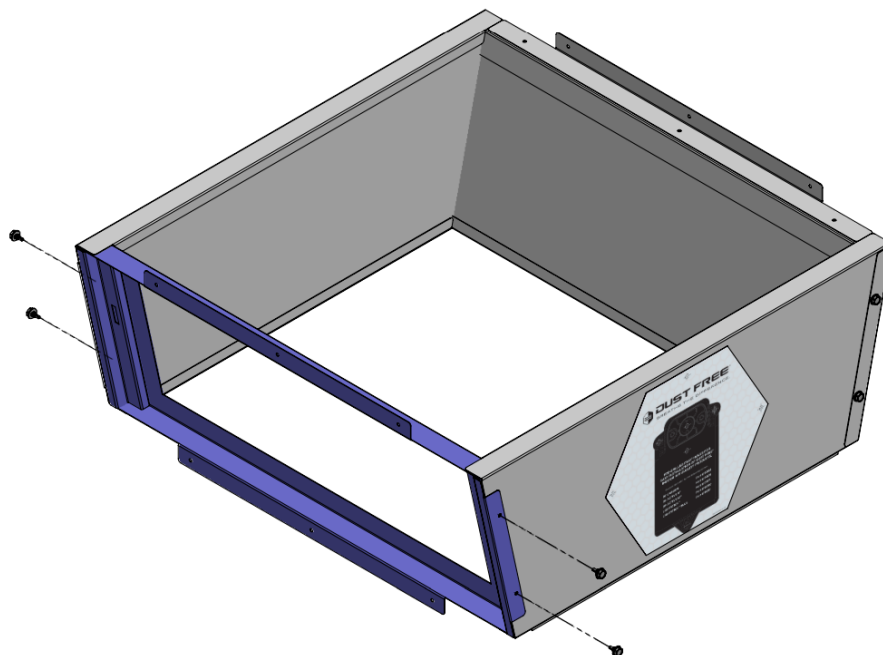


Figure 8: Secure door frame to rest of unit with supplied No.10 x 3/8" screws.

INSTALLATION

Installation should only be performed by a certified professional. If you plan to install this unit yourself, please be aware that the improper use of any tool can be dangerous. The manufacturer does not assume any responsibility for failures due to incorrect installation procedures.

Before beginning any installation or modification, ensure that the main line electrical disconnect switch is in the OFF position. Unexpected start-up of the system blower could cause serious injury. Tag disconnect switch with suitable warning labels.

When working on the transition, observe precautions in the owner's manual, labels attached to the furnace or air handler, and other safety precautions that may apply. Follow all safety codes. Wear safety glasses and work gloves.

1. Position the System Service Transition unit atop the furnace heat exchanger.
2. Align the opening in the furnace with the opening in the System Service Transition.
3. Secure the System Service Transition unit to the furnace with the supplied **No. 10 x 5/8"** screws using the pre-drilled mounting holes on the bottom of the unit.
4. Position the coil atop the System Service Transition.
5. Align the opening in the System Service Transition with the opening in the coil.
6. Secure the coil to the System Service Transition with the supplied **No. 10 x 5/8"** screws using the pre-drilled mounting holes on the top of the unit.
7. Use foil tape or mastic to seal all joints between the furnace, System Service Transition, and coil.
8. Place the door back on the door frame and latch the unit closed.

SUPPLEMENTARY PRODUCT INSTALLATION

The Dust Free SST2 System Service Transition unit may be fitted with supplementary germicidal UV light or air purifier systems to further improve the indoor air quality of the HVAC system. This unit was designed with easy implementation of Dust Free-branded products in mind. The Side Access models are supplied with Pre-drilled pilot holes on the side panels, indicated by the crosshairs on the labels. Identify the product you are installing and drill out the holes as designated. Refer to the installation instructions provided with the supplementary system you are installing for further information.

INSTALLER'S NOTES

Model Number: _____

Serial Number: _____

Date of Installation: _____

Installed By: _____

Owner's Name & Address: _____

WARRANTY



YOU MUST REGISTER YOUR PRODUCT TO BE ELIGIBLE FOR THE EXTENDED WARRANTY.

Scan the QR code above or register at www.dustfree.com/resources/warranty/

Dust Free LP warrants this Dust Free SST2 System Service Transition to be free from defects in materials and workmanship under normal use and service, for a standard period of two (2) years from the date of purchase or a period of ten (10) years from the date of purchase pending proper warranty registration. In order to be eligible for service under the warranty the product MUST be registered online at www.dustfree.com/resources/warranty/ within 10 days from the date of installation.

This warranty does not cover cosmetic damage, damage due to acts of God, damage as a result of handling or shipment, negligence, misuse, improper maintenance, or abuse. This warranty is void if defect(s) result from failure to have this unit installed by a qualified, properly licensed, heating and air conditioning contractor in compliance with all local building and construction codes.

Dust Free LP's exclusive obligation under this warranty shall be to supply, without charge, a replacement for any covered component of the Dust Free SST2 System Service Transition which is found to be defective within the parameters defined herein. Dust Free LP reserves the right to replace or repair the defective part or component.

DUST FREE LP SHALL NOT BE LIABLE FOR ANY LOSS OR DAMAGE OF ANY KIND, INCLUDING ANY INCIDENTAL OR CONSEQUENTIAL DAMAGES RESULTING, DIRECTLY OR INDIRECTLY, FROM ANY BREACH OF WARRANTY, EXPRESS OR IMPLIED, OR ANY OTHER FAILURE OF THIS PRODUCT. (Some states do not allow the exclusion or limitation of incidental or consequential damages, so this limitation may not apply to you.) THE WARRANTIES SET FORTH HEREIN ARE EXCLUSIVE AND DUST FREE LP EXPRESSLY DISCLAIMS ALL OTHER WARRANTIES, WHETHER WRITTEN OR ORAL, IMPLIED OR STATUTORY, INCLUDING BUT NOT LIMITED TO ANY WARRANTIES OF MERCHANTABILITY, WORKMANSHIP, OR FITNESS FOR A PARTICULAR USE. If the limited warranty is void due to failure to use a qualified contractor, all disclaimers of implied warranties shall be effective upon installation.

How to make a warranty claim or have questions answered:

Should you have a warranty claim or questions about the warranty policy, contact the distributor or dealer from which you purchased the product. Proof of original purchase and proof of identity that the original purchasing party is filing the claim is required in order to initiate a warranty claim. Defective parts must be returned no later than thirty (30) days after the failure to the installing contractor together with the model number, serial number, and date of installation. All service and removal must be performed by a licensed HVAC contractor. You must pay shipping charges and all other costs of warranty service. Warranty is only valid in the United States and Canada.

THIS WARRANTY SHALL NOT OBLIGATE THE MANUFACTURER FOR ANY LABOR COSTS AND SHALL NOT APPLY TO DEFECTS IN WORKMANSHIP OR MATERIALS FURNISHED BY THE INSTALLING CONTRACTOR AS CONTRASTED TO DEFECTS IN THE SYSTEM SERVICE TRANSITION UNIT ITSELF.

NOTE: Do not return any products or parts to the factory without a factory issued Return Authorization number issued by the Dust Free LP customer service department.

In the event you have any questions concerning the use and care of this product or this warranty which have not been answered to your satisfaction by the distributor or dealer, please call or write the factory.

Dust Free ®PO Box 519 | 1112 Industrial Drive

Royse City, TX 75189

1-972-635-9564

www.dustfree.com