

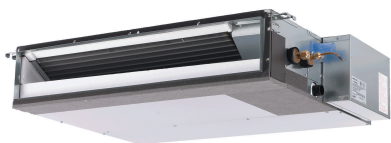
Job Name:

System Reference:

Date:

APPLIES TO INDOOR UNIT:

- ☐ SEZ-KD12NA4
- ☐ SEZ-KD12NA4.TH
- ☐ SEZ-KD12NAR1.TH
- ☐ SEZ-KD12NA4R1.TH



APPLIES TO OUTDOOR UNIT:

- ☐ SUZ-KA12NA
- ☐ SUZ-KA12NAR1



GENERAL FEATURES

- Concealed horizontal-ducted unit for applications with short duct runs
- Quiet operation
- Ultra-thin body: 7-7/8" high
- Built-in condensate lift mechanism
- Multiple control options available:
 - kumo cloud® smart device app for remote access
 - Third-party interface options
 - Wired or wireless controllers

SPECIFICATIONS: SEZ-KD12NA4 & SUZ-KA12NA

Cooling ¹	Maximum Capacity	Btu/h	13,300
	Rated Capacity	Btu/h	11,500
	Minimum Capacity	Btu/h	3,800
	Maximum Power Input	W	1,060
	Rated Power Input	W	920
	Moisture Removal	Pints/h	2.4
	Sensible Heat Factor		0.76
	Power Factor	%	96/96
Heating at 47°F ²	Maximum Capacity	Btu/h	16,400
	Rated Capacity	Btu/h	13,600
	Minimum Capacity	Btu/h	4,800
	Maximum Power Input	W	1,630
	Rated Power Input	W	1,140
	Power Factor	%	97/97
Heating at 17°F ³	Maximum Capacity	Btu/h	9,800
	Rated Capacity	Btu/h	9,000
	Maximum Power Input	W	1,180
	Rated Power Input	W	920
Heating at 5°F ⁴	Maximum Capacity	Btu/h	7,600
	Maximum Power Input	W	900
Efficiency	SEER		16.0
	EER ¹		12.5
	HSPF (IV)		10.0
	COP at 47°F ²		3.50
	COP at 17°F in Maximum Capacity ³		2.43
	COP at 5°F in Maximum Capacity ⁴		2.47
	ENERGY STAR® (ENERGY STAR products are third-party certified by an EPA-recognized Certification Body.)		YES
Electrical	Voltage, Phase, Frequency		208/230V, 1 phase, 60Hz
	Guaranteed Voltage Range	V AC	187-253
	Voltage: Indoor - Outdoor, S1-S2	V AC	208/230
	Voltage: Indoor - Outdoor, S2-S3	V DC	24
	Voltage: Indoor - Remote controller	V DC	12
	Recommended Fuse/Breaker Size	A	15
	Recommended Wire Size (Indoor - Outdoor)	AWG	14
Indoor Unit	MCA	A	1
	MOCP	A	15
	Blower Motor Full Load Amperage	A	0.57
	Blower Motor Output	W	96
	Airflow Rate at Cooling, Dry	CFM	388-317-247
	Airflow Rate at Cooling, Wet	CFM	349-285-222

SPECIFICATIONS: SEZ-KD12NA4 & SUZ-KA12NA

	Airflow Rate at Heating, Dry		CFM	388-317-247
	Sound Pressure Level (Cooling)		dB(A)	33-28-23
	Sound Pressure Level (Heating)		dB(A)	33-28-23
	External Static Pressure		in.WG	0.02-0.06-0.14-0.20
	Drain Pipe Size		In. (mm)	1 1/4 (32)
	Condensate Lift Mechanism, Maximum Distance		In. (mm)	21-21/32 (550)
	Heat Exchanger Type			Plate fin coil
	External Finish Color			Galvanized
	Unit Dimensions	W: In. (mm)	39 (990)	
		D: In. (mm)	27 9/16 (700)	
		H: In. (mm)	7 7/8 (200)	
	Package Dimensions	W: In. (mm)	47 1/4 (1,200)	
		D: In. (mm)	35 7/16 (900)	
		H: In. (mm)	14 3/16 (360)	
	Unit Weight		Lbs. (kg)	50 (22)
	Package Weight		Lbs. (kg)	73 (33)
Indoor Unit Operating Temperature Range	Cooling Intake Air Temp (Maximum / Minimum)*		°F	95 DB / 71 WB // 67 DB / 57 WB
	Heating Intake Air Temp (Maximum / Minimum)		°F	80 DB // 70 DB
Outdoor Unit	MCA		A	12
	MOCP		A	15
	Fan Motor Full Load Amperage		A	0.5
	Fan Motor Output		W	55
	Airflow Rate		CFM	1,229 / 1,172
	Refrigerant Control			LEV
	Defrost Method			Reverse cycle
	Heat Exchanger Type			Plate fin coil
	Sound Pressure Level, Cooling ¹		dB(A)	49
	Sound Pressure Level, Heating ²		dB(A)	51
	Compressor Type			INVERTER-driven
	Compressor Model			KNB092FQAHC
	Compressor Rated Load Amps		A	6.6
	Compressor Locked Rotor Amps		A	8.2
	Compressor Oil Type // Charge		oz.	NEO22 // 10.8
	External Finish Color			Munsell 3Y 7.8/1/1
	Base Pan Heater			Optional (MAC-640BH-U)
	Unit Dimensions	W: In. (mm)	31-1/2 (800)	
		D: In. (mm)	11-1/4 (285)	
		H: In. (mm)	21-5/8 (550)	
	Package Dimensions	W: In. (mm)	37 (940)	
		D: In. (mm)	14-15/16 (380)	
		H: In. (mm)	24-13/16 (630)	

SPECIFICATIONS: SEZ-KD12NA4 & SUZ-KA12NA

	Unit Weight	Lbs. (kg)	77 (35)
	Package Weight	Lbs. (kg)	84 (38)
Outdoor Unit Operating Temperature Range	Cooling Air Temp (Maximum / Minimum)*	°F	115 / 14
	Cooling Thermal Lock-out / Re-start Temperatures**	°F	-7 / -4
	Heating Air Temp (Maximum / Minimum)	°F	75 / -4
	Heating Thermal Lock-out / Re-start Temperatures**	°F	-7 / -4
Refrigerant	Type		R410A
	Charge	Lbs, oz	2, 9
Piping	Gas Pipe Size O.D. (Flared)	In. (mm)	3/8 (9.52)
	Liquid Pipe Size O.D. (Flared)	In. (mm)	1/4 (6.35)
	Maximum Piping Length	Ft. (m)	65 (20)
	Maximum Height Difference	Ft. (m)	40 (12)
	Maximum Number of Bends		10

Notes

AHRI Rated Conditions (Rated data is determined at a fixed compressor speed)	¹ Cooling (Indoor // Outdoor)	°F	80 DB, 67 WB // 95 DB, 75 WB
	² Heating at 47°F (Indoor // Outdoor)	°F	70 DB, 60 WB // 47 DB, 43 WB
	³ Heating at 17°F (Indoor // Outdoor)	°F	70 DB, 60 WB // 17 DB, 15 WB
Conditions	⁴ Heating at 5°F (Indoor // Outdoor)	°F	70 DB, 60 WB // -4 DB, -5 WB

*Applications should be restricted to comfort cooling only; equipment cooling applications are not recommended for low ambient temperature conditions.

**System cuts out in heating mode to avoid thermistor error and automatically restarts at these temperatures.

ACCESSORIES: SEZ-KD12NA4

Filter Box with MERV 8 Filters	<input type="checkbox"/> FBL 1-2
Signal Receiver	<input type="checkbox"/> PAR-SA9CA-E
Wireless Remote Controller	<input type="checkbox"/> PAR-FL32MA-E
Wireless Remote Receiver	<input type="checkbox"/> PAR-FA32MA-E
Backlit, Wall-mounted, Wireless Controller	<input type="checkbox"/> MHK1
Portable Central Controller	<input type="checkbox"/> MCCH1
Wired MA Controller	<input type="checkbox"/> PAR-33MAA
Simple MA Controller	<input type="checkbox"/> PAC-YT53CRAU
Touch MA Controller	<input type="checkbox"/> PAR-CT01MAU-SB
Wired Remote Sensor	<input type="checkbox"/> PAC-SE41TS-E
Lockdown Bracket for Wireless, Hand-held, Remote Controller	<input type="checkbox"/> RCMKP1CB
Wireless Temperature and Humidity Sensor	<input type="checkbox"/> PAC-USWHS003-TH-1
Outside Air Sensor for MHK1	<input type="checkbox"/> MOS1
Flush Mount Remote Temperature Sensor	<input type="checkbox"/> PAC-USSEN001-FM-1
Wireless Interface	<input type="checkbox"/> PAC-USWHS002-WF-1
Thermostat Interface	<input type="checkbox"/> PAC-US444CN-1
kumo station®	<input type="checkbox"/> PAC-WHS01HC-E
USNAP Interface	<input type="checkbox"/> PAC-WHS01UP-E
IT Extender	<input type="checkbox"/> PAC-WHS01IE-E
BACnet® and MODBUS® Interface	<input type="checkbox"/> PAC-UKPRC001-CN-1
External Fan / Heater Control Relay Adapter	<input type="checkbox"/> CN24RELAY-KIT-CM3
Connector cable for remote display	<input type="checkbox"/> PAC-SA88HA-EP
Connector for CN32 (remote on/off)	<input type="checkbox"/> PAC-SE55RA-E
Remote Operation Adapter (with wire terminals for remote ON/OFF and operation status/ error) ¹	<input type="checkbox"/> PAC-SF40RM-E
Bottom Return Plate (Converts low-profile ducted indoor unit from rear return to bottom return)	<input type="checkbox"/> BRP-2
External Drain Pump	<input type="checkbox"/> PAC-KE07DM-E
Blue Diamond Sensor Extension Cable—15 Ft.	<input type="checkbox"/> C13-103
Blue Diamond Alarm Extension Cable—6.5 Ft.	<input type="checkbox"/> C13-192
Blue Diamond MultiTank—collection tank for use with multiple pumps	<input type="checkbox"/> C21-014
Blue Diamond Rubber Foot Pads	<input type="checkbox"/> F10-010
Mini Condensate Pump—230V application	<input type="checkbox"/> SI30-230
MegaBlue Advanced Blue Diamond Condensate Pump w/ Reservoir & Sensor	<input type="checkbox"/> X87-835 - 110 to 250V
MaxiBlue Advanced Blue Diamond Mini Condensate Pump w/ Reservoir & Sensor (110V) up to 48,000 Btu/h [recommended]	<input type="checkbox"/> X87-711 - 110V
MaxiBlue Advanced Blue Diamond Mini Condensate Pump w/ Reservoir & Sensor (208/230V) up to 48,000 Btu/h [recommended]	<input type="checkbox"/> X87-721 - 208/230V
Drain Pan Level Sensor (Control for indoor unit shut off to prevent drain pan overflow)	<input type="checkbox"/> DPLS2
3 Pole Disconnect Switch (30A/600VUL) [fits 2"x4" utility] - Black	<input type="checkbox"/> TAZ-MS303
3 Pole Disconnect Switch (30A/600VUL) [fits 2"x4" utility] - White	<input type="checkbox"/> TAZ-MS303W
1/4" x 3/8" x 15' / 1/2" Lineset (Twin-Tube Insulation)	<input type="checkbox"/> MLS143812T-15
1/4" x 3/8" x 30' / 1/2" Lineset (Twin-Tube Insulation)	<input type="checkbox"/> MLS143812T-30
1/4" x 3/8" x 50' / 1/2" Lineset (Twin-Tube Insulation)	<input type="checkbox"/> MLS143812T-50
1/4" x 3/8" x 65' / 1/2" Lineset (Twin-Tube Insulation)	<input type="checkbox"/> MLS143812 -65
1/4 x 3/8 x 100' / 1/2" Lineset (Twin-Tube Insulation)	<input type="checkbox"/> MPLS385812 -10

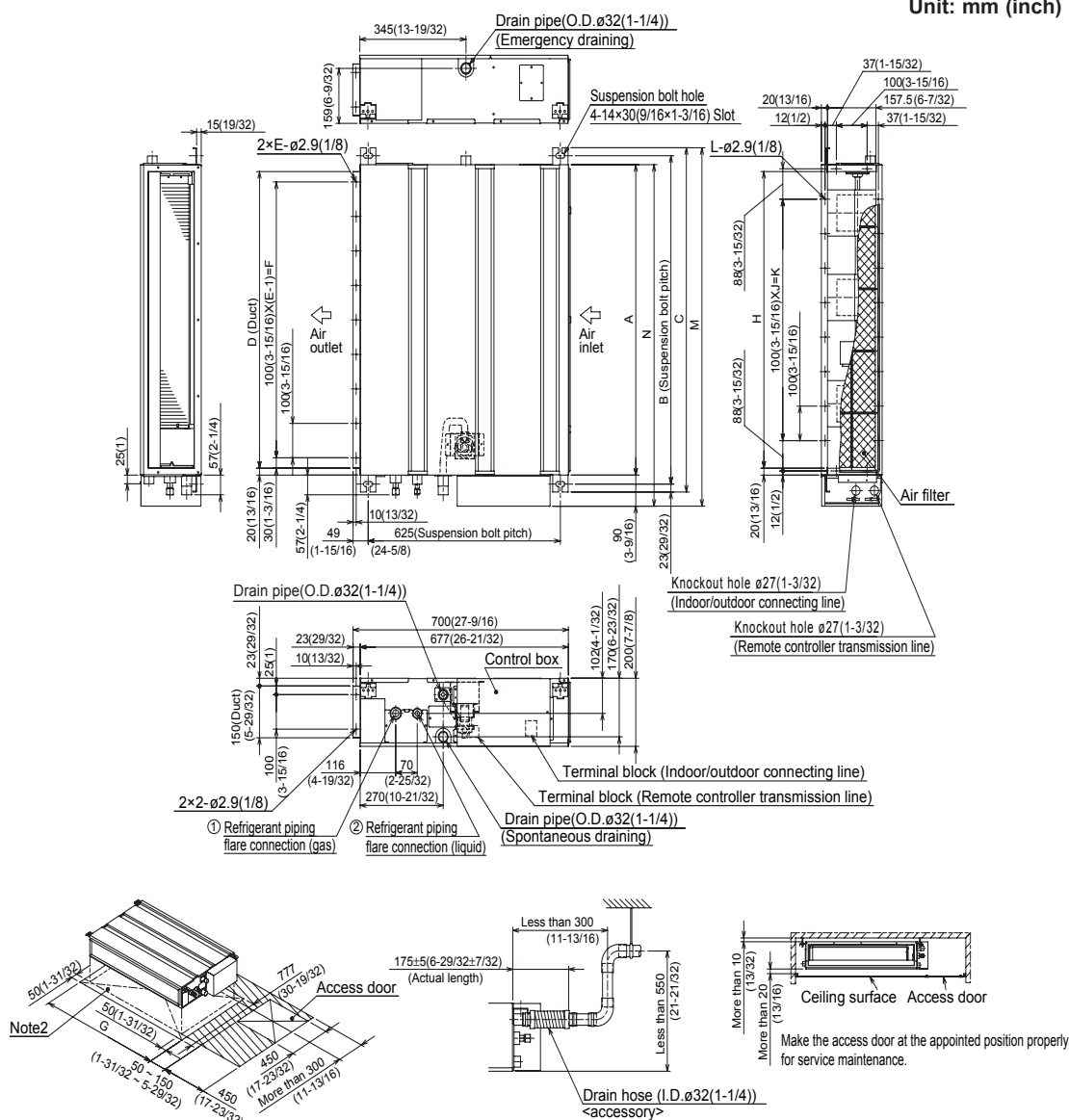
¹ Unable to use with wireless remote controller

ACCESSORIES: SUZ-KA12NA

Air Outlet Guide	□ MAC-881SG
Hail Guard	□ HG-B4
Defrost Heater	□ MAC-640BH-U
Outdoor Unit 3-1/4 inch Mounting Base (Pair) - Plastic	□ DSD-400P
Condensing Unit Mounting Pad 16" x 36" x 3"	□ ULTRILITE1
Outdoor Unit Stand—12" High	□ QSMS1201M
Outdoor Unit Stand—18" High	□ QSMS1801M
Outdoor Unit Stand—24" High	□ QSMS2401M
Heavy Duty Wall Mounting Bracket for Outdoor Units—Coated Steel	□ QSWB2000M-1
Heavy Duty Wall Mounting Bracket for Outdoor Units—316 Series Stainless Steel	□ QSWBSS

DIMENSIONS: SEZ-KD12NA4

Unit: mm (inch)



Required space for service and maintenance

mm (in.)

Sizes	A	B	C	D	E	F	G	H	J	K	L	M	N	① Gas pipe	② Liquid pipe
09 kBTu/h	700 (27-9/16)	752 (29-5/8)	798 (31-7/16)	660 (26)	7	600 (23-5/8)	800 (31-1/2)	660 (26)	5	500 (19-11/16)	16	839 (33-1/16)	790 (31-1/8)	$\phi 9.52(3/8)$ $\phi 6.35(1/4)$	$\phi 6.35(1/4)$
12 kBTu/h	900 (35-7/16)	952 (37-1/2)	998 (39-5/16)	860 (33-7/8)	9	800 (31-1/2)	1000 (39-3/8)	860 (33-7/8)	7	700 (27-9/16)	20	1039 (40-29/32)	990 (39)		
15 kBTu/h	1100 (43-3/16)	1152 (45-3/8)	1198 (47-3/16)	1060 (41-3/4)	11	1000 (39-3/8)	1200 (47-1/4)	1060 (41-3/4)	9	900 (35-7/16)	24	1239 (48-25/32)	1190 (46-7/8)		

Note1. Use M10 screw for the suspension bolt (field supply).

2. Keep the service space for the maintenance at the bottom.

3. This chart indicates for size 15 kBTu/h model, which has 3 fans.

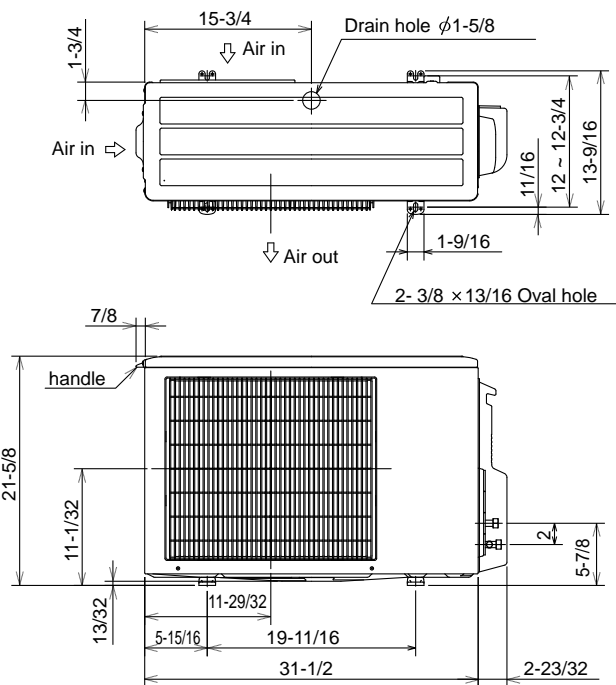
Sizes 09, 12 kBTu/h models have 2 fans.

Sizes 08 kBTu/h model has 4 fans.

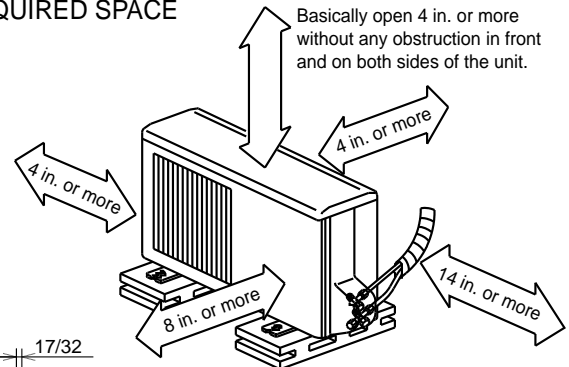
4. When an inlet duct is used, remove the air filter (supply with the unit), then install the filter (field supply) at suction side.

DIMENSIONS: SUZ-KA12NA

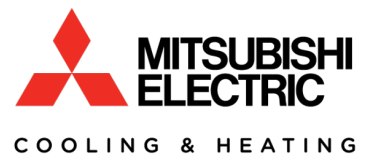
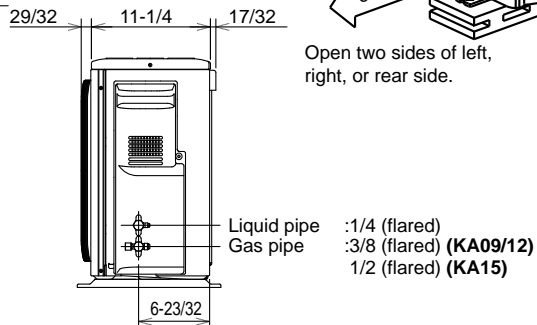
Unit: inch



REQUIRED SPACE



Open two sides of left, right, or rear side.



1340 Satellite Boulevard, Suwanee, GA 30024
Toll Free: 800-433-4822 www.mehvac.com

