

Job Name:

System Reference:

Date:

**APPLIES TO INDOOR UNIT:**

- ☐ SEZ-KD12NA4.TH
- ☐ SEZ-KD12NAR1.TH
- ☐ SEZ-KD12NA4R1.TH

**Outdoor Unit:**

SUZ-KA12NA2



**INDOOR UNIT FEATURES**

- Concealed horizontal-ducted unit for applications with short duct runs
- Quiet operation
- Ultra-thin body: 7-7/8" high
- Built-in condensate lift mechanism (lifts to 21-21/32")
- Multiple control options available:
  - kumo cloud® smart device app for remote access
  - Third-party interface options
  - Wired or wireless controllers
- Static capability up to 0.20 in. WG

**OUTDOOR UNIT FEATURES**

- Variable speed INVERTER-driven compressor
- Innovative Joint Lap DC Motor leads to high efficiency and reliability
- Pulse Amplitude Modulation technology
- High-performance grooved piping for increased heat exchange efficiency

# SPECIFICATIONS: SEZ-KD12NA4 & SUZ-KA12NA2

|                              |  |          |                         |
|------------------------------|--|----------|-------------------------|
| Cooling at 95°F <sup>1</sup> | Maximum Capacity   | BTU/H    | 12,000                  |
|                              | Rated Capacity   | BTU/H    | 12,000                  |
|                              | Minimum Capacity   | BTU/H    | 4,000                   |
|                              | Maximum Power Input  | W        | 930                     |
|                              | Rated Power Input  | W        | 930                     |
|                              | Moisture Removal   | Pints/h  | 1.9                     |
|                              | Sensible Heat Factor   |          | 0.82                    |
|                              | Power Factor (208/230V)  | %        | 95                      |
| Cooling at 82°F              | Maximum Capacity   | BTU/H    | 13,100                  |
|                              | Rated Capacity   | BTU/H    | 13,100                  |
|                              | Minimum Capacity   | BTU/H    | 4,200                   |
|                              | Maximum Power Input  | W        | 850                     |
|                              | Rated Power Input  | W        | 850                     |
| Heating at 47°F <sup>2</sup> | Maximum Capacity   | BTU/H    | 16,800                  |
|                              | Rated Capacity   | BTU/H    | 15,000                  |
|                              | Minimum Capacity   | BTU/H    | 4,800                   |
|                              | Maximum Power Input  | W        | 1,690                   |
|                              | Rated Power Input  | W        | 1,330                   |
|                              | Power Factor   | %        | 97                      |
| Heating at 17°F <sup>3</sup> | Maximum Capacity   | BTU/H    | 10,000                  |
|                              | Rated Capacity   | BTU/H    | 10,000                  |
|                              | Maximum Power Input  | W        | 1,180                   |
|                              | Rated Power Input  | W        | 1,180                   |
| Heating at 5°F <sup>4</sup>  | Maximum Capacity   | BTU/H    | 7,900                   |
|                              | Maximum Power Input  | W        | 970                     |
| Heating at -4°F <sup>5</sup> | Maximum Capacity   | BTU/H    | 5,800                   |
| Efficiency                   | SEER   |          | 20.5                    |
|                              | EER <sup>1</sup>   |          | 12.9                    |
|                              | HSPF (IV)  |          | 12.4                    |
|                              | COP at 47°F <sup>2</sup>   |          | 3.30                    |
|                              | COP at 17°F in Maximum Capacity <sup>3</sup>   |          | 2.48                    |
|                              | COP at 5°F in Maximum Capacity <sup>4</sup>  |          | 2.38                    |
|                              | ENERGY STAR® certified units (ENERGY STAR products are third-party certified by an EPA-recognized Certification Body.) |          | Yes                     |
| Electrical                   | Voltage, Phase, Frequency  |          | 208/230V, 1 phase, 60Hz |
|                              | Guaranteed Voltage Range   | V AC     | 187-253                 |
|                              | Voltage: Indoor - Outdoor, S1-S2   | V AC     | 208/230                 |
|                              | Voltage: Indoor - Outdoor, S2-S3   | V DC     | 24                      |
|                              | Short-circuit Current Rating (SCCR)  | kA       | 5                       |
|                              | Recommended Fuse/Breaker Size (Outdoor)  | A        | 15                      |
|                              | Recommended Wire Size (Indoor - Outdoor)   | AWG      | 14                      |
| Indoor Unit                  | MCA  | A        | 1                       |
|                              | Fan Motor Full Load Amperage   | A        | 0.57                    |
|                              | Fan Motor Output   | W        | 96                      |
|                              | Airflow Rate at Cooling, Dry   | CFM      | 388-317-247             |
|                              | Airflow Rate at Cooling, Wet   | CFM      | 349-285-222             |
|                              | Airflow Rate at Heating, Dry   | CFM      | 388-317-247             |
|                              | Sound Pressure Level (Cooling)   | dB(A)    | 33-28-23                |
|                              | Sound Pressure Level (Heating)   | dB(A)    | 33-28-23                |
|                              | External Static Pressure   | in.WG    | 0.02-0.06-0.14-0.20     |
|                              | Drain Pipe Size  | In. (mm) | 1-1/4 (32)              |

# SPECIFICATIONS: SEZ-KD12NA4 & SUZ-KA12NA2

|  |  |             |  |
|--|--|-------------|--|
|  | Condensate Lift Mechanism, Maximum Distance        | In. (mm)    | 21-21/32 (550)                         |
|  | Heat Exchanger Type                                |             | Plate fin coil                         |
|  | External Finish Color                              |             | Galvanized                             |
|  | Unit Dimensions                                    | W: In. (mm) | 39 (990)                               |
|  |  | D: In. (mm) | 27-9/16 (700)                          |
|  |  | H: In. (mm) | 7-7/8 (200)                            |
|  | Package Dimensions                                 | W: In. (mm) | 47-1/4 (1,200)                         |
|  |  | D: In. (mm) | 35-7/16 (900)                          |
|  |  | H: In. (mm) | 14-3/16 (360)                          |
|  | Unit Weight  | Lbs. (kg)   | 50 (22)                                |
|  | Package Weight                                     | Lbs. (kg)   | 73 (33)                                |
| Indoor Unit Operating Temperature Range  | Cooling Intake Air Temp (Maximum / Minimum)*       | °F          | 95F D.B / 71F W.B // 67F D.B / 57F W.B |
|  | Heating Intake Air Temp (Maximum / Minimum)        | °F          | 77 DB // 59 DB                         |
| Outdoor Unit                             | MCA  | A           | 9                                      |
|  | MOCP   | A           | 16                                     |
|  | Fan Motor Full Load Amperage                       | A           | 0.5                                    |
|  | Fan Motor Output                                   | W           | 55                                     |
|  | Airflow Rate                                       | CFM         | 1,229 / 1,172                          |
|  | Refrigerant Control                                |             | LEV                                    |
|  | Defrost Method                                     |             | Reverse cycle                          |
|  | Heat Exchanger Type                                |             | Plate fin coil                         |
|  | Blue Fin Coating on Heat Exchanger                 |             | Yes                                    |
|  | Sound Pressure Level, Cooling <sup>1</sup>         | dB(A)       | 49                                     |
|  | Sound Pressure Level, Heating <sup>2</sup>         | dB(A)       | 51                                     |
|  | Compressor Type                                    |             | DC INVERTER-driven Twin Rotary         |
|  | Compressor Model                                   |             | SNB092FQAMT                            |
|  | Compressor Rated Load Amps                         | A           | 6.6                                    |
|  | Compressor Locked Rotor Amps                       | A           | 8.2                                    |
|  | Compressor Oil Type // Charge                      | oz.         | FV50S // 11.8                          |
|  | External Finish Color                              |             | Ivory Munsell 3Y 7.8/1.1               |
|  | Base Pan Heater                                    |             | Optional                               |
|  | Unit Dimensions                                    | W: In. (mm) | 31-1/2 (800)                           |
|  |  | D: In. (mm) | 11-1/4 (285)                           |
|  |  | H: In. (mm) | 21-5/8 (550)                           |
|  | Package Dimensions                                 | W: In. (mm) | 38 (940)                               |
|  |  | D: In. (mm) | 14-15/16 (380)                         |
|  |  | H: In. (mm) | 24-13/16 (630)                         |
|  | Unit Weight  | Lbs. (kg)   | 81 (37)                                |
|  | Package Weight                                     | Lbs. (kg)   | 88 (40)                                |
| Outdoor Unit Operating Temperature Range | Cooling Air Temp (Maximum / Minimum)*              | °F          | 115 / 14                               |
|  | Cooling Thermal Lock-out / Re-start Temperatures** | °F          | -1 / 3                                 |
|  | Heating Air Temp (Maximum / Minimum)               | °F          | 75 / -4                                |
|  | Heating Thermal Lock-out / Re-start Temperatures** | °F          | -9 / -4                                |
| Refrigerant                              | Type   |             | R410A                                  |
|  | Charge   | Lbs, oz     | 2, 9                                   |
| Piping                                   | Gas Pipe Size O.D. (Flared)                        | In.(mm)     | 3/8 (9.52)                             |
|  | Liquid Pipe Size O.D. (Flared)                     | In.(mm)     | 1/4 (6.35)                             |
|  | Maximum Piping Length                              | Ft. (m)     | 65                                     |
|  | Maximum Height Difference                          | Ft. (m)     | 40                                     |
|  | Maximum Number of Bends                            |             | 10                                     |

SPECIFICATIONS: SEZ-KD12NA4 & SUZ-KA12NA2

Notes

|  |  |    |                              |
|--|--|----|------------------------------|
| AHRI Rated Conditions (Rated data is determined at a fixed compressor speed)   | <sup>1</sup> Cooling (Indoor // Outdoor)         | °F | 80 DB, 67 WB // 95 DB, 75 WB |
|  | <sup>2</sup> Heating at 47°F (Indoor // Outdoor) | °F | 70 DB, 60 WB // 47 DB, 43 WB |
|  | <sup>3</sup> Heating at 17°F (Indoor // Outdoor) | °F | 70 DB, 60 WB // 17 DB, 15 WB |
| Conditions   | <sup>4</sup> Heating at 5°F (Indoor // Outdoor)  | °F | 70 DB, 60 WB // 5 DB, 4 WB   |
|  | <sup>5</sup> Heating at -4°F (Indoor // Outdoor) | °F | 70 DB, 60 WB // -4 DB, -5 WB |
| <div>*Applications should be restricted to comfort cooling only; equipment cooling applications are not recommended for low ambient temperature conditions.</div> <div>**System cuts out in heating mode to avoid thermistor error and automatically restarts at these temperatures.</div> |  |    |                              |

# ACCESSORIES: SEZ-KD12NA4

|   |                         |
|---|-------------------------|
| Filter Box with MERV 8 Filters  | □ FBL1-2                |
| Wireless Signal Receiver  | □ PAR-SA9CA-E           |
| Wireless Signal Receiver  | □ PAR-FA32MA-W          |
| Wireless Remote Controller  | □ PAR-FL32MA-E          |
| kumo touch™ RedLINK™ Wireless Controller  | □ MHK2                  |
| Deluxe MA Remote Controller   | □ PAR-40MAAU            |
| Simple MA Controller  | □ PAC-YT53CRAU-J        |
| Touch MA Controller   | □ PAR-CT01MAU-SB        |
| Wired Remote Sensor   | □ PAC-SE41TS-E          |
| Wireless Temperature and Humidity Sensor  | □ PAC-USWHS003-TH-1     |
| Flush Mount Remote Temperature Sensor   | □ PAC-USSEN002-FM-1     |
| Wireless Interface 2  | □ PAC-USWHS002-WF-2     |
| Thermostat Interface  | □ PAC-US444CN-1         |
| Thermostat Interface  | □ PAC-US445CN-1         |
| kumo station® for kumo cloud®   | □ PAC-WHS01HC-E         |
| USNAP Interface   | □ PAC-WHS01UP-E         |
| IT Extender   | □ PAC-WHS01IE-E         |
| BACnet® and MODBUS® Interface   | □ PAC-UKPRC001-CN-1     |
| External Fan / Heater Control Relay Adapter   | □ CN24RELAY-KIT-CM3     |
| Wire for Remote on/off with CN32 connector  | □ PAC-715AD             |
| Connector and wire for Operation status/error using CN51  | □ PAC-725AD             |
| Connector cable for remote display  | □ PAC-SA88HA-EP         |
| Remote Operation Adapter <sup>1</sup>   | □ PAC-SF40RM-E          |
| Bottom Return Plate (Converts low-profile ducted indoor unit from rear return to bottom return) | □ BRP-2                 |
| Blue Diamond Sensor Extension Cable — 15 Ft.  | □ C13-103               |
| Blue Diamond Alarm Extension Cable — 6.5 Ft.  | □ C13-192               |
| Blue Diamond MultiTank — collection tank for use with multiple pumps                            | □ C21-014               |
| Blue Diamond Rubber Foot Pads   | □ F10-010               |
| Mini Condensate Pump — 230 volt application   | □ SI30-230              |
| MegaBlue Advanced Blue Diamond Condensate Pump w/ Reservoir & Sensor                            | □ X87-835 - 110 to 250V |
| Advanced Blue Diamond Mini Condensate Pump w/ Reservoir & Sensor (208/230V) [recommended]       | □ X87-721 - 208/230V    |
| Refco Condensate Pump (100-240 VAC) up to 120,000 BTU/H   | □ COMBI                 |
| (30A/600V/UL) [fits 2" X 4" utility box] - Black  | □ TAZ-MS303             |
| (30A/600V/UL) [fits 2" X 4" utility box] - White  | □ TAZ-MS303W            |

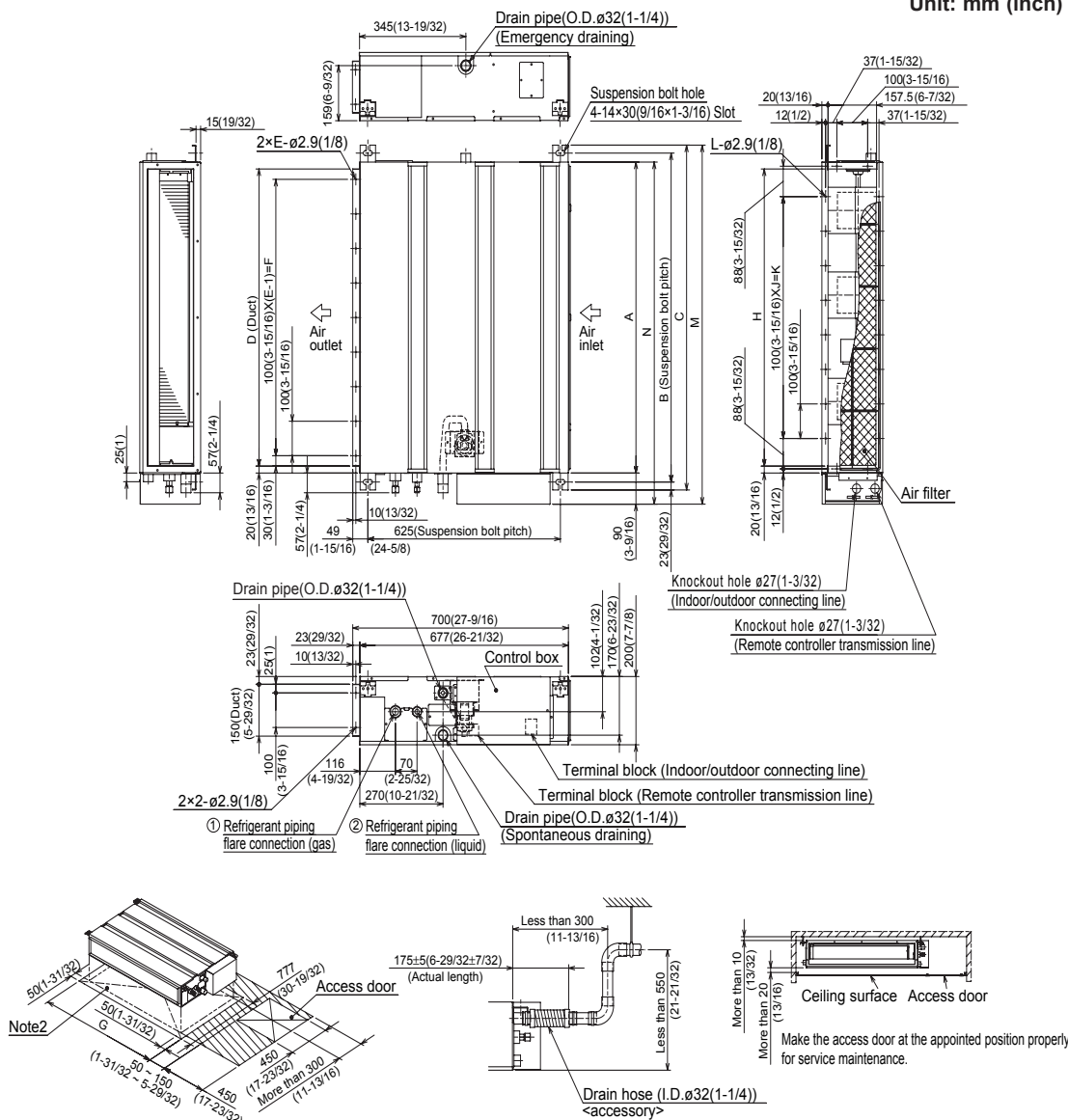
<sup>1</sup> Unable to use with wireless remote controller

## ACCESSORIES: SUZ-KA12NA2

|   |                 |
|---|-----------------|
| Air Outlet Guide  | □ MAC-881SG     |
| Optional Defrost Heater                                       | □ MAC-640BH-U   |
| Hail Guard  | □ HG-B4         |
| Outdoor Unit 3-1/4 inch Mounting Base (Pair) - Plastic        | □ DSD-400P      |
| Condensing Unit Mounting Pad 16" x 36" x 3"                   | □ ULTRILITE1    |
| Outdoor Unit Stand — 12" High                                 | □ QSMS1201M     |
| Outdoor Unit Stand — 18" High                                 | □ QSMS1801M     |
| Outdoor Unit Stand — 24" High                                 | □ QSMS2401M     |
| Heavy Duty Wall Mounting Bracket— Coated Steel                | □ QSWB2000M-1   |
| Heavy Duty Wall Mounting Bracket — 316 Series Stainless Steel | □ QSWBSS        |
| 15' x 1/4" x 15' / 3/8" Lineset (Twin-Tube Insulation)        | □ MLS143812T-15 |
| 30' x 1/4" x 30' / 3/8" Lineset (Twin-Tube Insulation)        | □ MLS143812T-30 |
| 50' x 1/4" x 50' / 3/8" Lineset (Twin-Tube Insulation)        | □ MLS143812T-50 |
| 65' x 1/4" x 65' / 3/8" Lineset (Twin-Tube Insulation)        | □ MLS143812T-65 |

# DIMENSIONS: SEZ-KD12NA4

Unit: mm (inch)



mm (in.)

| Sizes     | A                 | B                | C                 | D                | E  | F                | G                | H                | J | K                 | L  | M                  | N                | ① Gas pipe        | ② Liquid pipe     |
|-----------|-------------------|------------------|-------------------|------------------|----|------------------|------------------|------------------|---|-------------------|----|--------------------|------------------|-------------------|-------------------|
| 09 KBTU/H | 700<br>(27-9/16)  | 752<br>(29-5/8)  | 798<br>(31-7/16)  | 660<br>(26)      | 7  | 600<br>(23-5/8)  | 800<br>(31-1/2)  | 660<br>(26)      | 5 | 500<br>(19-11/16) | 16 | 839<br>(33-1/16)   | 790<br>(31-1/8)  | $\phi$ 9.52 (3/8) | $\phi$ 6.35 (1/4) |
| 12 KBTU/H | 900<br>(35-7/16)  | 952<br>(37-1/2)  | 998<br>(39-5/16)  | 860<br>(33-7/8)  | 9  | 800<br>(31-1/2)  | 1000<br>(39-3/8) | 860<br>(33-7/8)  | 7 | 700<br>(27-9/16)  | 20 | 1039<br>(40-29/32) | 990<br>(39)      |                   |                   |
| 15 KBTU/H | 1100<br>(43-5/16) | 1152<br>(45-3/8) | 1198<br>(47-3/16) | 1060<br>(41-3/4) | 11 | 1000<br>(39-3/8) | 1200<br>(47-1/4) | 1060<br>(41-3/4) | 9 | 900<br>(35-7/16)  | 24 | 1239<br>(48-25/32) | 1190<br>(46-7/8) |                   |                   |

Note1. Use M10 screw for the suspension bolt (field supply).

2. Keep the service space for the maintenance at the bottom.

3. This chart indicates for size 15 kBTU/h model, which has 3 fans.

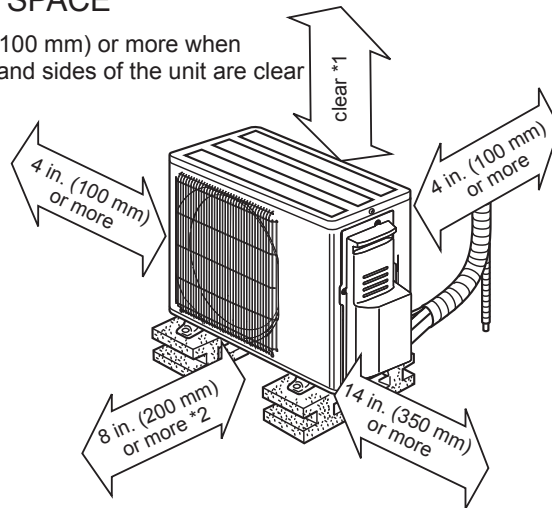
Sizes 09, 12 kBTU/h models have 2 fans.

Sizes 08 kBTU/h model has 4 fans.

4. When an inlet duct is used, remove the air filter (supply with the unit), then install the filter (field supply) at suction side.

## REQUIRED SPACE

\*1 4 in. (100 mm) or more when front and sides of the unit are clear



\*2 When any 2 sides of left, right and rear of the unit are clear

