

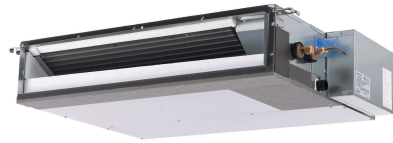
Job Name:

System Reference:

Date:

APPLIES TO INDOOR UNIT:

- ☐ SEZ-KD12NA4
- ☐ SEZ-KD12NA4.TH
- ☐ SEZ-KD12NAR1.TH
- ☐ SEZ-KD12NA4R1.TH



GENERAL FEATURES

- Concealed horizontal-ducted unit for applications with short duct runs
- Quiet operation
- Ultra-thin body: 7-7/8" high
- Built-in condensate lift mechanism
- Multiple control options available:
 - kumo cloud[®] smart device app for remote access
 - Third-party interface options
 - Wired or wireless controllers

SPECIFICATIONS: SEZ-KD12NA4

| | | | |
|---|-------------------------------------|-----------|-------------------------|
| Cooling Capacity ^{1, 3} | | Btu/h | 11,500 |
| Heating Capacity ^{2, 3} | | Btu/h | 13,600 |
| Electrical | Voltage, Phase, Frequency | | 208/230V, 1 phase, 60Hz |
| | Guaranteed Voltage Range | V AC | 187-253 |
| | Voltage: Indoor - Outdoor, S1-S2 | V AC | 208/230 |
| | Voltage: Indoor - Outdoor, S2-S3 | V DC | 24 |
| | Voltage: Indoor - Remote controller | V DC | 12 |
| MCA | | A | 1 |
| Blower Motor Full Load Amperage | | A | 0.57 |
| Blower Motor Output | | W | 96 |
| Airflow Rate at Cooling, Dry | | CFM | 388-317-247 |
| Airflow Rate at Cooling, Wet | | CFM | 349-285-222 |
| Airflow Rate at Heating, Dry | | CFM | 388-317-247 |
| Sound Pressure Level (Cooling) | | dB(A) | 33-28-23 |
| Sound Pressure Level (Heating) | | dB(A) | 33-28-23 |
| External Static Pressure | | in.WG | 0.02-0.06-0.14-0.20 |
| Drain Pipe Size | | In. (mm) | 1 1/4 (32) |
| Condensate Lift Mechanism, Maximum Distance | | In. (mm) | 21-21/32 (550) |
| Heat Exchanger Type | | | Plate fin coil |
| External Finish Color | | | Galvanized |
| Unit Dimensions | W: In. (mm) | | 39 (990) |
| | D: In. (mm) | | 27 9/16 (700) |
| | H: In. (mm) | | 7 7/8 (200) |
| Package Dimensions | W: In. (mm) | | 47 1/4 (1,200) |
| | D: In. (mm) | | 35 7/16 (900) |
| | H: In. (mm) | | 14 3/16 (360) |
| Unit Weight | | Lbs. (kg) | 50 (22) |
| Package Weight | | Lbs. (kg) | 73 (33) |
| Refrigerant | Type | | R410A |
| | Charge | Lbs, oz | 2, 9 |

Notes:

| | | | |
|--------------------|--|----|------------------------------|
| Nominal Conditions | ¹ Cooling (Indoor // Outdoor) | °F | 80 DB, 67 WB // 95 DB, 75 WB |
| | ² Heating at 47°F (Indoor // Outdoor) | °F | 70 DB, 60 WB // 47 DB, 43 WB |

³Capacity varies based on the number of indoor units operating and the model of the Multi-zone Outdoor Unit. For reference to connected capacity charts, please refer Multi-zone Outdoor Unit Operational Performance.

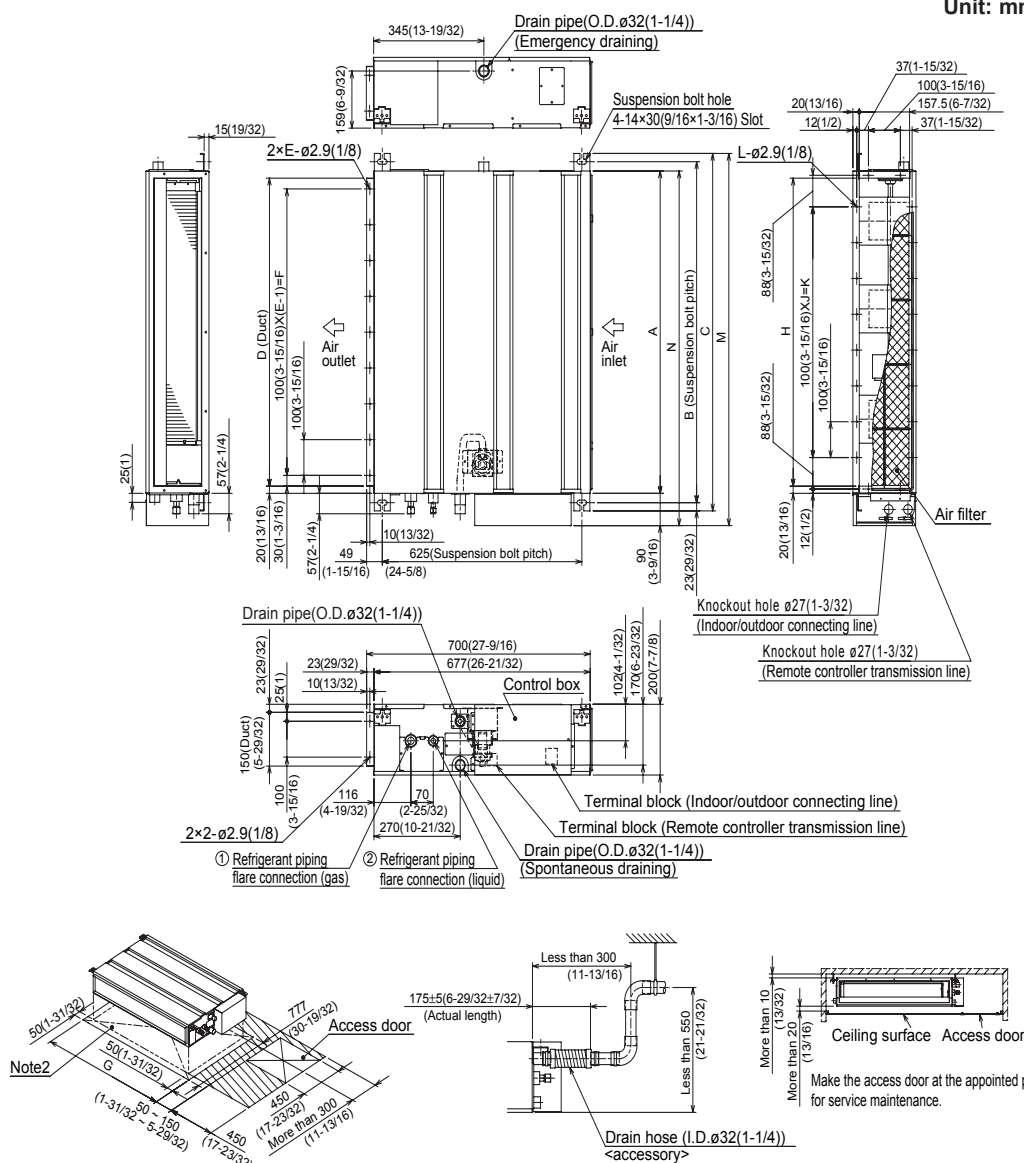
ACCESSORIES: SEZ-KD12NA4

| | |
|---|-------------------------|
| Filter Box with MERV 8 Filters | □ FBL 1-2 |
| Signal Receiver | □ PAR-SA9CA-E |
| Wireless Remote Controller | □ PAR-FL32MA-E |
| Wireless Remote Receiver | □ PAR-FA32MA-E |
| Backlit, Wall-mounted, Wireless Controller | □ MHK1 |
| Portable Central Controller | □ MCCH1 |
| Wired MA Controller | □ PAR-33MAA |
| Simple MA Controller | □ PAC-YT53CRAU |
| Touch MA Controller | □ PAR-CT01MAU-SB |
| Wired Remote Sensor | □ PAC-SE41TS-E |
| Lockdown Bracket for Wireless, Hand-held, Remote Controller | □ RCMKP1CB |
| Wireless Temperature and Humidity Sensor | □ PAC-USWHS003-TH-1 |
| Outside Air Sensor for MHK1 | □ MOS1 |
| Flush Mount Remote Temperature Sensor | □ PAC-USSEN001-FM-1 |
| Wireless Interface | □ PAC-USWHS002-WF-1 |
| Thermostat Interface | □ PAC-US444CN-1 |
| kumo station® | □ PAC-WHS01HC-E |
| USNAP Interface | □ PAC-WHS01UP-E |
| IT Extender | □ PAC-WHS01IE-E |
| BACnet® and MODBUS® Interface | □ PAC-UKPRC001-CN-1 |
| External Fan / Heater Control Relay Adapter | □ CN24RELAY-KIT-CM3 |
| Connector cable for remote display | □ PAC-SA88HA-EP |
| Connector for CN32 (remote on/off) | □ PAC-SE55RA-E |
| Remote Operation Adapter (with wire terminals for remote ON/OFF and operation status/ error) ¹ | □ PAC-SF40RM-E |
| Bottom Return Plate (Converts low-profile ducted indoor unit from rear return to bottom return) | □ BRP-2 |
| External Drain Pump | □ PAC-KE07DM-E |
| Blue Diamond Sensor Extension Cable—15 Ft. | □ C13-103 |
| Blue Diamond Alarm Extension Cable—6.5 Ft. | □ C13-192 |
| Blue Diamond MultiTank—collection tank for use with multiple pumps | □ C21-014 |
| Blue Diamond Rubber Foot Pads | □ F10-010 |
| Mini Condensate Pump—230V application | □ SI30-230 |
| MegaBlue Advanced Blue Diamond Condensate Pump w/ Reservoir & Sensor | □ X87-835 - 110 to 250V |
| MaxiBlue Advanced Blue Diamond Mini Condensate Pump w/ Reservoir & Sensor (110V) up to 48,000 Btu/h [recommended] | □ X87-711 - 110V |
| MaxiBlue Advanced Blue Diamond Mini Condensate Pump w/ Reservoir & Sensor (208/230V) up to 48,000 Btu/h [recommended] | □ X87-721 - 208/230V |
| Drain Pan Level Sensor (Control for indoor unit shut off to prevent drain pan overflow) | □ DPLS2 |
| 3 Pole Disconnect Switch (30A/600VUL) [fits 2"x4" utility] - Black | □ TAZ-MS303 |
| 3 Pole Disconnect Switch (30A/600VUL) [fits 2"x4" utility] - White | □ TAZ-MS303W |
| 1/4" x 3/8" x 15' / 1/2" Lineset (Twin-Tube Insulation) | □ MLS143812T-15 |
| 1/4" x 3/8" x 30' / 1/2" Lineset (Twin-Tube Insulation) | □ MLS143812T-30 |
| 1/4" x 3/8" x 50' / 1/2" Lineset (Twin-Tube Insulation) | □ MLS143812T-50 |
| 1/4" x 3/8" x 65' / 1/2" Lineset (Twin-Tube Insulation) | □ MLS143812 -65 |
| 1/4 x 3/8 x 100' / 1/2" Lineset (Twin-Tube Insulation) | □ MPLS385812 -10 |

¹ Unable to use with wireless remote controller

DIMENSIONS: SEZ-KD12NA4

Unit: mm (inch)



Required space for service and maintenance

mm (in.)

| Sizes | A | B | C | D | E | F | G | H | J | K | L | M | N | ① Gas pipe | ② Liquid pipe |
|-----------|-------------------|------------------|-------------------|------------------|----|------------------|------------------|------------------|---|-------------------|----|--------------------|------------------|------------|---------------|
| 09 kBtu/h | 700 (27-9/16) | 752 (29-5/8) | 798 (31-7/16) | 660 (26) | 7 | 600 (23-5/8) | 800 (31-1/2) | 660 (26) | 5 | 500 (19-11/16) | 16 | 839 (33-11/16) | 790 (31-1/8) | ø9.52(3/8) | ø6.35(1/4) |
| 12 kBtu/h | 900 (35-7/16) | 952 (37-1/2) | 998 (39-5/16) | 860 (33-7/8) | 9 | 800 (31-1/2) | 1000 (39-3/8) | 860 (33-7/8) | 7 | 700 (27-9/16) | 20 | 1039 (40-29/32) | 990 (39) | | |
| 15 kBtu/h | | | | | | | | | | | | | | ø12.7(1/2) | |
| 18 kBtu/h | 1100 (43-5/16) | 1152 (45-3/8) | 1198 (47-3/16) | 1060 (41-3/4) | 11 | 1000 (39-3/8) | 1200 (47-1/4) | 1060 (41-3/4) | 9 | 900 (35-7/16) | 24 | 1239 (48-25/32) | 1190 (46-7/8) | | |

Note1. Use M10 screw for the suspension bolt (field supply).

2. Keep the service space for the maintenance at the bottom.
3. This chart indicates for size 15 kBtu/h model, which has 3 fans.
Sizes 09,12 kBtu/h models have 2 fans.
Sizes 08 kBtu/h model has 4 fans.
4. When an inlet duct is used, remove the air filter (supply with the unit), then install the filter (field supply) at suction side.



COOLING & HEATING

1340 Satellite Boulevard, Suwanee, GA 30024
Toll Free: 800-433-4822 www.mehvac.com

FORM#SEZ-KD12NA4 FOR MXZ-C MULTI-ZONE HEAT-PUMP
SYSTEMS - 201811



Specifications are subject to change without notice.

© 2018 Mitsubishi Electric Trane HVAC US LLC. All rights reserved.