
RXM**VVJU Ductless Outdoor Heat Pump Inverter

RXM09VVJU

RXM12VVJU

RXM18VVJU

RXM24VVJU



This manual is to be used by qualified technicians only.

Important Information

Index

Functional Parts List	3
Illustration and Parts	4 - 7

Views shown are for parts illustrations only, not servicing procedures.

Text Codes:

AR - As Required

NA - Not Available

NS - Not Shown

00000000 - See Note

QTY - Quantity Example (QTY 3) (If Quantity not shown, Quantity = 1)

M - Model Example (M1) (If M Code not shown, then part is used on all Models)

Expanded Model Nomenclature:

Example M1 - Model#1 M2 - Model#2 M3 - Model#3

Daikin Manufacturing Company, L.P. is not responsible for personal injury or property damage resulting from improper service. Review all service information before beginning repairs.

Warranty service must be performed by an authorized technician, using authorized factory parts. If service is required after the warranty expires, Daikin Manufacturing Company, L.P. also recommends contacting an authorized technician and using authorized factory parts.

Daikin Manufacturing Company, L.P. reserves the right to discontinue, or change at any time, specifications or designs without notice or without incurring obligations.

For assistance within the U.S.A. contact:

Homeowner Support
Daikin North America, LLC
19001 Kermier Road
Waller, Texas 77484
855-770-5678-Telephone
713-863-2382-Facsimile

For assistance outside the U.S.A. contact:

International Division
Daikin North America, LLC
19001 Kermier Road
Waller, Texas 77484
713-861-2500-Telephone
713-863-2382-Facsimile

Functional Parts

Part

No: Description:

2455992	BODY/ FOUR WAY VALVE (M3, M4)
2253538	CHECK VALVE (M3, M4)
2534994	COIL/ ELECTRONIC EXP. VALVE (M3, M4)
2534981	COMPRESSOR ASSY. (M1, M2)
2534982	COMPRESSOR ASSY. (M3, M4)
4025584	DC FAN MOTOR (M1, M2)
5018797	FAN MOTOR (M3, M4)
131316J	FUSE (M1, M2)
153875J	FUSE (M3, M4)
2534983	HIGH PRESSURE SWITCH
2428510	OVERLOAD PROTECTOR
2534989	PRINTED CIRCUIT BOARD ASSY. (CONTROL) (M1)
2535011	PRINTED CIRCUIT BOARD ASSY. (CONTROL) (M2)
2535568	PRINTED CIRCUIT BOARD ASSY. (MAIN) (M3)
2535578	PRINTED CIRCUIT BOARD ASSY. (MAIN) (M4)
6025165	PRINTED CIRCUIT BOARD ASSY. (SERVICE) (M3, M4)
4021210	THERMISTOR (LIQUID) (M1, M2)
2534990	THERMISTOR ASSY. (M1, M2)
2534987	THERMISTOR ASSY. (M3, M4)

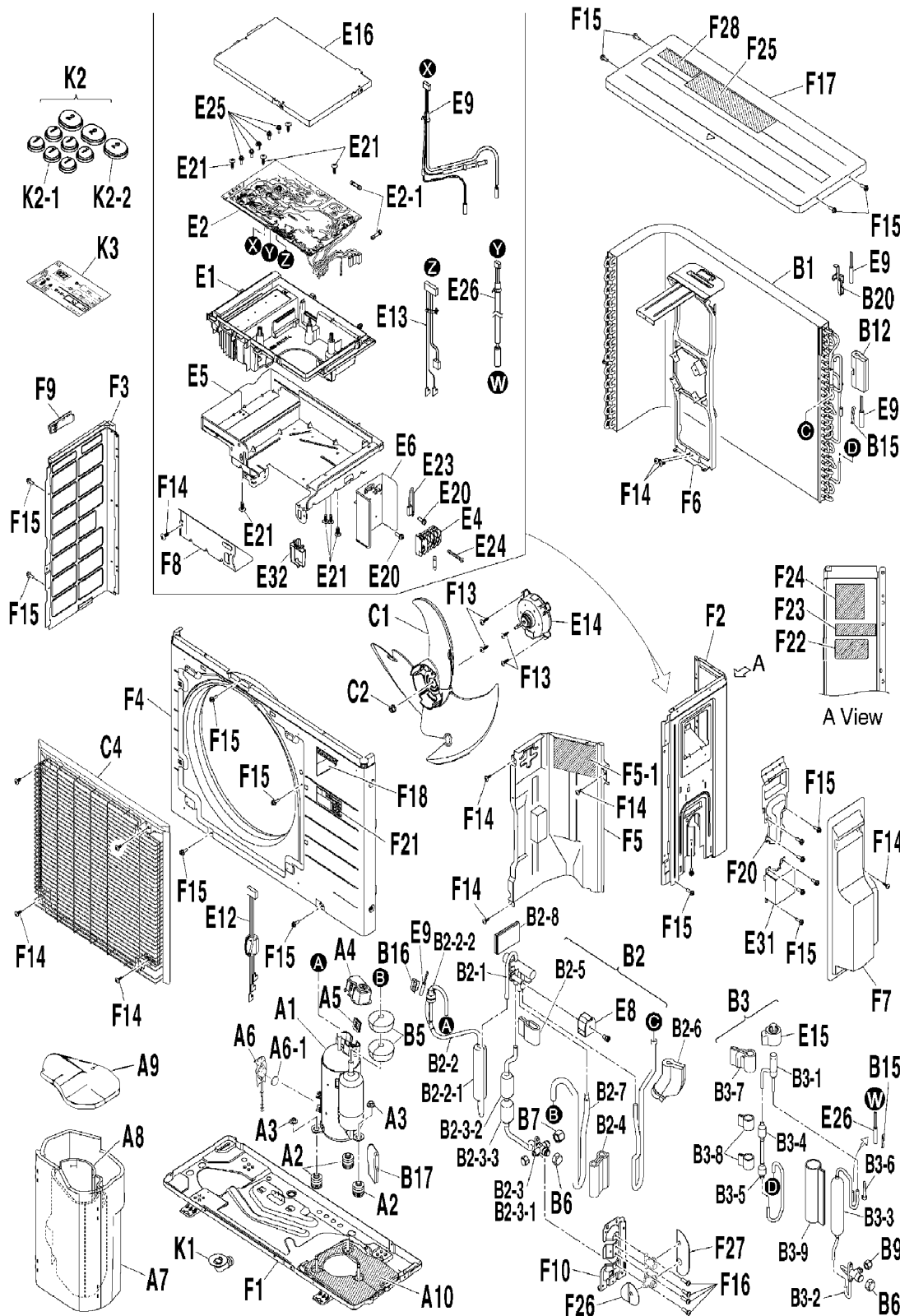
Expanded Model Nomenclature

M1 - RXM09VVJU
M2 - RXM12VVJU
M3 - RXM18VVJU
M4 - RXM24VVJU

RXM[09,12]VVJU

RXM09VVJU / RXM12VVJU

—TOP—



Reference #	Drawing #
1	A1
2	A10
3	A2
4	A3
5	A4
6	A5
7	A6
8	A6-1
9	A7
10	A8
11	A9
12	B1
13	B12
14	B15
15	B16
16	B17
17	B2
18	B20
19	B2.1
20	B2.2
21	B2.2.1
22	B2.2.2
23	B2.3
24	B2.3.1
25	B2.3.2
26	B2.3.3
27	B2.4
28	B2.5
29	B2.6
30	B2.7
31	B2.8
32	B3
33	B3.1
34	B3.2
35	B3.3
36	B3.4
37	B3.5
38	B3.6
39	B3.7
40	B3.8
41	B3.9
42	B5
43	B6
44	B7
45	B9
46	C1
47	C2
48	C4
49	E1
50	E12
51	E13
52	E14
53	E15
54	E16
55	E2
56	E20
57	E21
58	E2.1
59	E23
60	E24
61	E25
62	E26
63	E3
64	E32
65	F1
66	F14
67	F15
68	F16
69	F17
70	F18
71	F2
72	F23
73	F24
74	F25
75	F26
76	F27
77	F28
78	F3
79	F3.1
80	F3.2
81	F3.3
82	F3.4
83	F3.5
84	F3.6
85	F3.7
86	F3.8
87	F3.9
88	F3.10
89	F3.11
90	F3.12
91	F3.13
92	F3.14
93	F3.15
94	F3.16
95	F3.17
96	F3.18
97	F3.19
98	F3.20
99	F3.21
100	F3.22

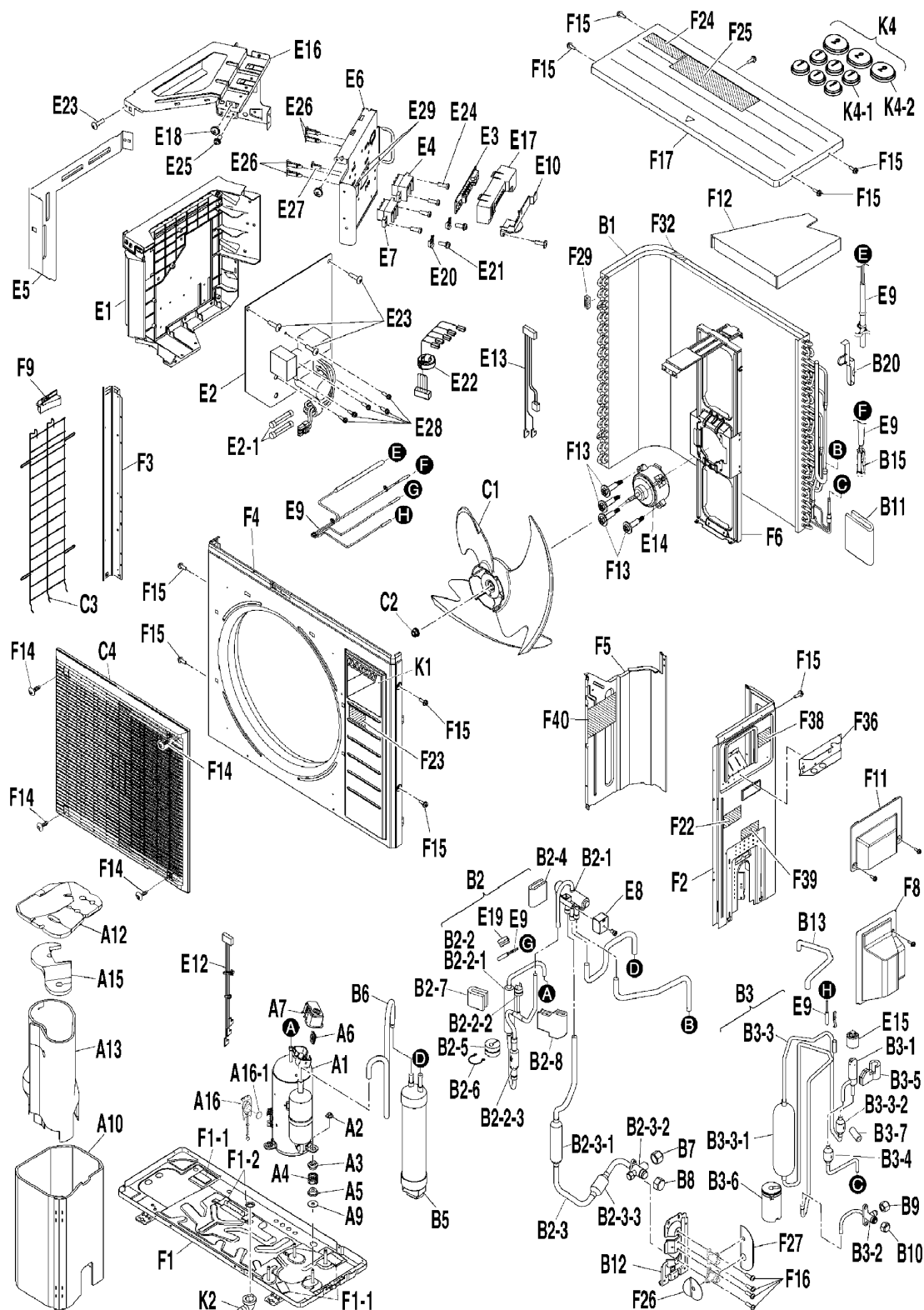
RXM[09,12]VVJU

Ref. Part No: No:	Description:	Ref. Part No: No:	Description:
Image 1:		Image 1:	
1	2534981 COMPRESSOR ASSY. (M1, M2)	55	2535011 PRINTED CIRCUIT BOARD ASSY. (CONTROL) (M2)
2	147248J SOUND INSULATOR/ COMP. (BOTTOM) (M1, M2)	56	4004935 PAN HEAD TAPPING SCREW (3) (M1, M2)
3	091532J VIBRATION ISOLATOR (M1, M2)	57	109688J TRUSS HEAD TAPPING SCREW (M1, M2)
4	4010410 WASHER (NUT WITH WASHER) (M1, M2)	58	131316J FUSE (M1, M2)
5	2425597 TERMINAL COVER (M1, M2)	59	150420J EARTH WIRE (M1, M2)
6	040139J RUBBER BUSH/ LEAD WIRE (M1, M2)	60	1839504 PAN HEAD TAPPING SCREW (M1, M2)
7	2428510 OVERLOAD PROTECTOR (M1, M2)	61	4015929 MACHINE SCREW WITH WASHER (M1, M2)
8	2428527 RADIATION SHEET (M1, M2)	62	4021210 THERMISTOR (LIQUID) (M1, M2)
9	2535556 SOUND INSULATION (OUTER SLEEVE) (M1, M2)	63	2535654 CONDUIT MOUNTING PLATE (M1, M2)
10	2535557 SOUND INSULATION (INNER SLEEVE) (M1, M2)	64	027843J WIRE CLIP (M1, M2)
11	2535558 SOUND INSULATION (TOP) (M1, M2)	65	156720J TERMINAL BLOCK (M1, M2)
12	4016134 PLATE FINNED COIL HEAT EXCH. ASSY. (M1, M2)	66	2535551 SHIELD PLATE ASSY. (M1, M2)
13	2535562 PUTTY (M1, M2)	67	2535579 MOUNTING PLATE (TERMINAL STRIP) (M1, M2)
14	380120J FITTING SPRING/ THERMISTOR (M1, M2)	68	2512770 COIL/ FOURWAY VALVE (M1, M2)
15	1728781 FIXTURE/ THERMISTOR (M1, M2)	69	2534990 THERMISTOR ASSY. (M1, M2)
16	2535563 PUTTY (HEAT RESISTANT) (M1, M2)	70	2535554 BOTTOM FRAME ASSY. (M1, M2)
17	NA FOUR WAY VALVE ASSY. (M1, M2)	71	150423J MOUNTING PLATE/ STOP VALVE (M1, M2)
18	128511J FIXTURE/ THERMISTOR (M1, M2)	72	147362J TRUSS HEAD TAPPING SCREW (M1, M2)
19	2342313 BODY/ FOUR WAY VALVE (M1, M2)	73	008203J TRUSS HEAD TAPPING SCREW (M1, M2)
20	NA DISCHARGE PIPE ASSY. (M1, M2)	74	109224J HEX HEAD TAPPING SCREW (M1, M2)
21	152295J MUFFLER (M1, M2)	75	048017J PAN HEAD TAPPING SCREW (M1, M2)
22	2534983 HIGH PRESSURE SWITCH (M1, M2)	76	2395951 TOP PLATE ASSY. (M1, M2)
23	NA GAS STOP VALVE ASSY. (M1, M2)	77	1853966 BRAND NAME LABEL (M1, M2)
24	4021232 GAS STOP VALVE ASSY. (M1, M2)	78	2534999 SIDE PLATE (RIGHT) (M1, M2)
25	160017J MUFFLER (M1, M2)	79	2535636 SHIELD PLATE (TERMINAL STRIP) (M1, M2)
26	1807576 MUFFLER (M1, M2)	80	4015454 LABEL NAME PLATE (INVERTER/ R32) (M1, M2)
27	120158J SOUNDPROOF PUTTY (M1, M2)	81	NA PRODUCT LIABILITY CAUTION LABEL (M1, M2)
28	1754285 PUTTY (M1, M2)	82	NA CAUTION LABEL (BURN) (M1, M2)
29	2535546 PUTTY (4WAY VALVE - HEAT EXCH.) (M1, M2)	83	NA CAUTION LABEL (ELECTRIC SHOCK) (M1, M2)
30	NA SUCTION PIPE (M1, M2)	84	NA CAUTION LABEL (FLAMMABLE GAS) (M1, M2)
31	2535547 PUTTY (HEAT RESISTANT) (M1, M2)	85	NA SIDE CAP (SERVICE PORT) (M1, M2)
32	NA ELECTRONIC EXP. VALVE ASSY. (M1, M2)	86	NA SIDE CAP (LIQUID-GAS STOP VALVE) (M1, M2)
33	2342320 BODY/ ELECTRONIC EXP. VALVE (M1, M2)	87	NA CAUTION LABEL (SUPERCARGO CAUTION) (M1, M2)
34	158555J LIQUID STOP VALVE ASSY. (M1, M2)	88	4008272 SIDE PLATE (LEFT) (M1, M2)
35	2535548 LIQUID RECEIVER (M1, M2)	89	2535555 FRONT PLATE ASSY. (M1, M2)
36	4020906 MUFFLER (M1, M2)	90	2535559 PARTITION PLATE ASSY. (M1, M2)
37	1406702 MUFFLER (M1, M2)	91	NA CAUTION LABEL (FLAMMABLE GAS FOR COMP.) (M1, M2)
38	148403J STRAINER (M1, M2)	92	4021307 FAN MOTOR BASE (M1, M2)
39	147254J PUTTY (M1, M2)	93	2535560 STOP VALVE COVER (M1, M2)
40	2159148 PUTTY (M1, M2)	94	2535561 SHIELD PLATE (P.C.B) (M1, M2)
41	1708213 SOUNDPROOF PUTTY (M1, M2)	95	4015625 HANDLE (LEFT) (M1, M2)
42	112853J VIBRATION ISOLATOR PUTTY (M1, M2)	96	058956J DRAIN JOINT (M1, M2)
43	045432J STOP VALVE CAP (M1, M2)	97	NA ACCESSORY SET (M1, M2)
44	119848J FLARE NUT (M1, M2)	98	2253709 CAP 1 (DRAIN) (M1, M2)
45	1723546 FLARE NUT (M1, M2)	99	2253716 CAP 2 (DRAIN) (M1, M2)
46	2481427 FAN BLADE (M1, M2)	100	NA ADDITIONAL REFR. CHARGE LABEL (M1, M2)
47	847002J FAN RETAINING NUT (M1, M2)	Expanded Model Nomenclature <div> M1 - RXM09VVJU M2 - RXM12VVJU M3 - RXM18VVJU M4 - RXM24VVJU </div>	
48	2535000 DISCHARGE GRILLE ASSY. (M1, M2)		
49	2535549 SWITCH BOX (M1, M2)		
50	2534992 WIRE HARNESS. (FOR COMP.) (M1, M2)		
51	2534991 WIRE HARNESS ASSY. (FOR OL/HPS) (M1, M2)		
52	4025584 DC FAN MOTOR (M1, M2)		
53	4021212 COIL/ ELECTRONIC EXP. VALVE (M1, M2)		
54	2535550 COVER/ SWITCH BOX (M1, M2)		
55	2534989 PRINTED CIRCUIT BOARD ASSY. (CONTROL) (M1)		

RXM[18,24]VVJU

RXM18VVJU / RXM24VVJU

—TOP—



Reference #	Drawing #
1	A1
2	A10
3	A12
4	A13
5	A15
6	A16
7	A16-1
8	A2
9	A3
10	A4
11	A5
12	A6
13	A7
14	A9
15	B1
16	B10
17	B11
18	B12
19	B13
20	B15
21	B2
22	B20
23	B2-1
24	B2-2
25	B2-2-1
26	B2-2-2
27	B2-3-1
28	B2-3
29	B2-3-1
30	B2-3-2
31	B2-3-3
32	B2-4
33	B2-5
34	B2-6
35	B2-7
36	B2-8
37	B3
38	B3-1
39	B3-2
40	B3-3
41	B3-3-1
42	B3-3-2
43	B3-4
44	B3-5
45	B3-6
46	B3-7
47	B5
48	B6
49	B7
50	B8
51	B9
52	C1
53	C2
54	C3
55	C4
56	E1
57	E10
58	E12
59	E13
60	E14
61	E15
62	E16
63	E17
64	E18
65	E19
66	E2
67	E20
68	E21
69	E2-1
70	E22
71	E23
72	E24
73	E25
74	E26
75	E27
76	E28
77	E29
78	E3
79	E4
80	E5
81	E6
82	E7
83	E8
84	E9
85	F1
86	F11
87	F1-1
88	F1-2
89	F1-3
90	F14
91	F15
92	F16
93	F17
94	F18
95	F2
96	F22
97	F23
98	F24
99	F25
100	F26
101	F27
102	F28
103	F3
104	F32
105	F33
106	F34
107	F35
108	F4
109	F40
110	F5
111	F6
112	F7
113	F8
114	F9
115	K1
116	K2
117	K4-1
118	K4-2

RXM[18,24]VVJU

Ref. Part No: No:	Description:	Ref. Part No: No:	Description:
Image 1:		Image 1:	
1	2534982 COMPRESSOR ASSY. (M3, M4)	52	4016827 PROPELLER FAN ASSY. (M3, M4)
2	2535574 SOUND INSULATION (OUTER SLEEVE) (M3, M4)	53	847003J LOCK NUT/ FAN (M3, M4)
3	2535575 SOUND INSULATION (TOP) (M3, M4)	54	6025762 PROTECTION NET (LEFT SIDE) (M3, M4)
4	2535573 SOUND INSULATION (INNER SLEEVE) (M3, M4)	55	6024941 DISCHARGE GRILLE ASSY. (M3, M4)
5	6025183 SOUND INSULATION (INNER TOP) (M3, M4)	56	2255767 EL. COMPO. MOUNTING PLATE (M3, M4)
6	2428510 OVERLOAD PROTECTOR (M3, M4)	57	2535569 SWITCH COVER (M3, M4)
7	2428527 RADIATION SHEET (M3, M4)	58	2534993 WIRE HARNESS ASSY. (COMP.) (M3, M4)
8	4010410 WASHER (NUT WITH WASHER) (M3, M4)	59	2534988 WIRE HARNESS ASSY. (OL/HPS) (M3, M4)
9	096039J SPRING HOLDER (1) (M3, M4)	60	5018797 FAN MOTOR (M3, M4)
10	390208J MOUNTING SPRING (M3, M4)	61	2534994 COIL/ ELECTRONIC EXP. VALVE (M3, M4)
11	390215J SPRING HOLDER (2) (M3, M4)	62	2255820 MOUNTING PLATE (TERMINAL STRIP 2) (M3, M4)
12	040139J RUBBER BUSH/ LEAD WIRE (M3, M4)	63	6026826 COVER (M3, M4)
13	2425597 TERMINAL COVER (M3, M4)	64	044060J TAPPING SCREW (M3, M4)
14	2255402 PLAIN WASHER (COMP.) (M3, M4)	65	6005471 FIXTURE/ THERMISTOR (M3, M4)
15	2499466 HEAT EXCHANGER ASSY. (M3, M4)	66	2535568 PRINTED CIRCUIT BOARD ASSY. (MAIN) (M3)
16	1753314 VALVE CAP (M3, M4)	66	2535578 PRINTED CIRCUIT BOARD ASSY. (MAIN) (M4)
17	1912601 PUTTY (M3, M4)	67	1786749 WASHER (FOR EARTH) (M3, M4)
18	2504919 MOUNTING PLATE/ STOP VALVE (M4)	68	113783J TAPPING SCREW (M3, M4)
18	7900070 MOUNTING PLATE/ STOP VALVE (M3)	69	153875J FUSE (M3, M4)
19	2371436 THERMAL INSULATION TUBE (M3, M4)	70	6026823 WIRE HARNESS ASSY. (M3, M4)
20	380120J FITTING SPRING/ THERMISTOR (M3, M4)	71	121650J TRUSS HEAD TAPPING SCREW (M3, M4)
21	NA FOUR WAY VALVE ASSY. (M3, M4)	72	131513J PAN HEAD TAPPING SCREW (M3, M4)
22	128511J FIXTURE/ THERMISTOR (M3, M4)	73	136116J DOUBLE WASHER MACHINE SCREW (M3, M4)
23	2455992 BODY/ FOUR WAY VALVE (M3, M4)	74	1728464 SPACER (PCB) (M3, M4)
24	NA DISCHARGE PIPE ASSY. (M3, M4)	75	2115472 SPACER (PCB) (M3, M4)
25	161839J MUFFLER (M3, M4)	76	131073J PAN HEAD MACHINE SCREW (M3, M4)
26	2534983 HIGH PRESSURE SWITCH (M3, M4)	77	2531522 INDICATION LABEL (TERMINAL) (M3, M4)
27	2253538 CHECK VALVE (M3, M4)	78	6025165 PRINTED CIRCUIT BOARD ASSY. (SERVICE) (M3, M4)
28	NA GAS STOP VALVE ASSY. (M3, M4)	79	2531225 TERMINAL BLOCK (M3, M4)
29	1703605 MUFFLER (M3, M4)	80	2255844 RADIATION SHIELD PLATE (M3, M4)
30	2535564 GAS STOP VALVE ASSY. (SUB) (M3)	81	2535567 MOUNTING PLATE (TERMINAL STRIP1) (M3, M4)
30	2535576 GAS STOP VALVE ASSY. (SUB) (M4)	82	2531224 TERMINAL BLOCK (M3, M4)
31	170889J MUFFLER (M3, M4)	83	2462325 FOUR WAY VALVE COIL ASSY. (M3, M4)
32	2535547 PUTTY (HEAT RESISTANT) (M3, M4)	84	2534987 THERMISTOR ASSY. (M3, M4)
33	980753J VIBRATION ABSORBER/ REF. PIPING (M3, M4)	85	2504926 BOTTOM FRAME ASSY. (M3, M4)
34	980761J WEIGHT CLIP (M3, M4)	86	2535571 COVER/ TERMINAL STRIP (M3, M4)
35	NA CUSHION MATERIAL (M3, M4)	87	2256102 PUTTY (M3, M4)
36	2535565 PUTTY (HPS) (M3, M4)	88	6025178 DRIP PROOF COVER ASSY. (M3, M4)
37	NA ELECTRONIC EXP. VALVE ASSY. (M3, M4)	89	7900085 CUSHION RUBBER (BOTTOM FRAME) (M3, M4)
38	2534986 BODY/ ELECTRONIC EXP. VALVE (M3, M4)	90	140380J WASHER FACED HEAD TAPPING SCREW (M3, M4)
39	4016555 LIQUID STOP VALVE ASSY. (SUB) (M3, M4)	91	008203J TRUSS HEAD TAPPING SCREW (M3, M4)
40	NA LIQUID RECEIVER ASSY. (M3, M4)	92	109224J HEX HEAD TAPPING SCREW (M3, M4)
41	4016560 LIQUID RECEIVER (M3, M4)	93	048017J PAN HEAD TAPPING SCREW (M3, M4)
42	138233J MUFFLER (M3, M4)	94	2534996 TOP PLATE (M3, M4)
43	138233J MUFFLER (M3, M4)	95	2534997 SIDE PLATE ASSY. (RIGHT) (M3, M4)
44	4020237 PUTTY (M3, M4)	96	NA PRODUCT LIABILITY CAUTION LABEL (M3, M4)
45	4016553 PIPING FIXTURE (RUBBER) (M3, M4)	97	4015454 LABEL NAME PLATE (INVERTER/ R32) (M3, M4)
46	NA THERMAL INSULATION TUBE (M3, M4)	98	NA CAUTION LABEL (SUPERCARGO CAUTION) (M3, M4)
47	2504902 LIQUID-GAS SEPARATOR ASSY. (M3, M4)	99	NA CAUTION LABEL (FLAMMABLE GAS) (M3, M4)
48	NA SUCTION PIPE (M3, M4)	100	NA SIDE CAP (SERVICE PORT) (M3, M4)
49	119849J FLARE NUT (M3)	101	NA SIDE CAP (LIQUID-GAS STOP VALVE) (M3, M4)
49	119850J FLARE NUT (M4)	102	7900083 SEALING MATERIAL (M3, M4)
50	139571J VALVE CAP (M4)	103	2535570 SIDE PLATE ASSY. (LEFT) (M3, M4)
50	6015411 VALVE CAP (M3)	104	6026829 SEALING MATERIAL (HEAT EXCH. TOP) (M3, M4)
51	1723546 FLARE NUT (M3, M4)	105	2535572 CONDUIT MOUNTING PLATE (M3, M4)

RXM[18,24]VVJU

Ref. Part

No: No:

Description:

Ref. Part

No: No:

Description:

Image 1:

106	NA	CAUTION LABEL (ELECTRIC SHOCK) (M3, M4)
107	NA	CAUTION LABEL (BURN) (M3, M4)
108	2504940	FRONT PLATE ASSY. (M3, M4)
109	NA	CAUTION LABEL (FLAMMABLE GAS FOR COMP.) (M3, M4)
110	2504957	PARTITION PLATE ASSY. (M3, M4)
111	2504964	FAN MOTOR STAND ASSY. (M3, M4)
112	6022709	STOP VALVE COVER (M3, M4)
113	6022835	HANDLE (M3, M4)
114	6025256	BRAND NAME LABEL (M3, M4)
115	058956J	DRAIN JOINT (M3, M4)
116	NA	ACCESSORY SET (M3, M4)
117	2253709	CAP 1 (DRAIN) (M3, M4)
118	2253716	CAP 2 (DRAIN) (M3, M4)

Expanded Model Nomenclature

M1 - RXM09VVJU
M2 - RXM12VVJU
M3 - RXM18VVJU
M4 - RXM24VVJU