

Revision G:

• MUZ-GL09/12/15NA(H)-U2 and
MUY-GL09/12/15NA-U2 have been added.

OBB733 REVISED EDITION-F is void.

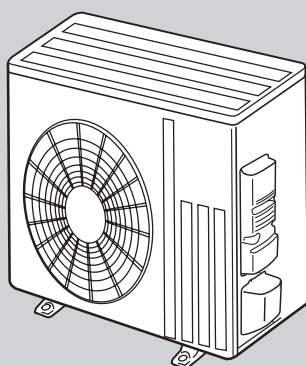
OUTDOOR UNIT

PARTS CATALOG

No. OBB733
REVISED EDITION-G

Models

MUZ-GL09NA · <u>U1</u> , <u>U2</u> , <u>U8</u>	MUZ-GL09NAH · <u>U1</u> , <u>U2</u> , <u>U8</u>	MUY-GL09NA · <u>U1</u> , <u>U2</u>
MUZ-GL12NA · <u>U1</u> , <u>U2</u>	MUZ-GL12NAH · <u>U1</u> , <u>U2</u>	MUY-GL12NA · <u>U1</u> , <u>U2</u>
MUZ-GL15NA · <u>U1</u> , <u>U2</u>	MUZ-GL15NAH · <u>U1</u> , <u>U2</u>	MUY-GL15NA · <u>U1</u> , <u>U2</u>
MUZ-GL18NA · <u>U1</u>	MUZ-GL18NAH · <u>U1</u>	MUY-GL18NA · <u>U1</u>
MUZ-GL24NA · <u>U1</u> , <u>U2</u>	MUZ-GL24NAH · <u>U1</u>	MUY-GL24NA · <u>U1</u>



MUZ-GL18/24NA
MUZ-GL18/24NAH
MUY-GL18/24NA

CONTENTS

1. SERVICE PARTS LIST.....	2
2. OPTIONAL PARTS.....	10

SERVICE MANUAL (OBH733)

Revision A:

• MUZ-GL12/15NA-[U1], MUZ-GL12/15NAH-[U1] and MUY-GL09/12/15NA-[U1] have been added.

Revision B:

• MUZ-GL09NA-[U8] and MUZ-GL09NAH-[U8] have been added.

Revision C:

• MUZ-GL09NA-[U1] and MUZ-GL09NAH-[U1] have been added.

Revision D:

• MUZ-GL24NAH-[U1] has been added.

Revision E:

• Parts number of the outdoor heat exchanger temperature thermistor and the discharge temperature thermistor for MUY-GL18NA-[U1] have been changed.

Revision F:

• MUZ-GL24NA-[U2] has been added.

Revision G:

• MUZ-GL09/12/15NA(H)-[U2] and MUY-GL09/12/15NA-[U2] have been added.

1**SERVICE PARTS LIST**

MUZ-GL09NA - [U1, U8]

MUZ-GL09NAH - [U1, U8]

MUY-GL09NA - [U1]

MUZ-GL12NA - [U1]

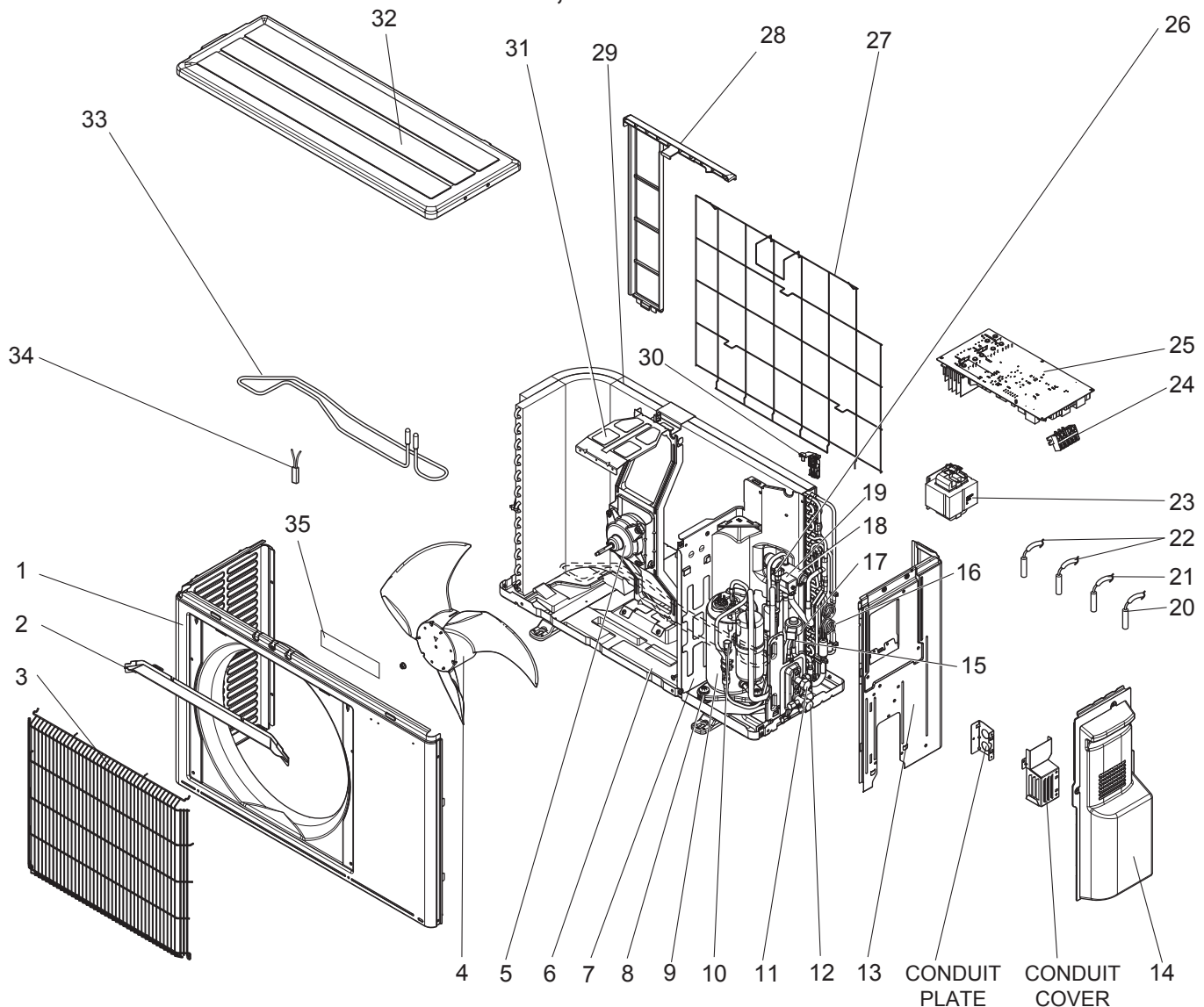
MUZ-GL12NAH - [U1]

MUY-GL12NA - [U1]

MUZ-GL15NA - [U1]

MUZ-GL15NAH - [U1]

MUY-GL15NA - [U1]

1-1. OUTDOOR UNIT STRUCTURAL PARTS, ELECTRICAL PARTS AND FUNCTIONAL PARTS

1-1. OUTDOOR UNIT STRUCTURAL PARTS, ELECTRICAL PARTS AND FUNCTIONAL PARTS

Part number that is circled is not shown in the illustration.

No.	Part No.	Part Name	Symbol in Wiring Diagram	Q'ty/unit												Remarks
				MUZ-GL								MUY-GL				
				09 NA	09 NAH	09 NA	09 NAH	12 NA	12 NAH	15 NA	15 NAH	09 NA	12 NA	15 NA		
				- [U1]	- [U1]	- [U8]	- [U8]	- [U1]	- [U1]	- [U1]	- [U1]	- [U1]	- [U1]	- [U1]		
1	U01 A01 232	CABINET		1	1	1	1	1	1	1	1	1	1	1		
2	U01 A01 531	ICE GUARD		1	1	1	1	1	1	1	1	1	1	1		
3	U01 A01 521	GRILLE		1	1	1	1	1	1	1	1	1	1	1		
4	U01 A01 501	PROPELLER FAN		1	1	1	1	1	1	1	1	1	1	1		
5	U01 A01 301	OUTDOOR FAN MOTOR	MF	1	1	1	1	1	1	1	1	1	1	1	RC0J55-□□	
6	U01 A02 290 U01 A01 290	BASE		1		1		1		1		1	1	1		
					1		1		1		1					
7	U01 A02 293 U01 A01 293	SEPARATOR		1		1		1		1		1	1	1		
					1		1		1		1					
8	U01 A01 506	COMP. RUBBER SET		3	3	3	3	3	3	3	3	3	3	3	3 RUBBERS/SET	
	U01 A03 900	COMPRESSOR (KNB073FRVMC)		1	1							1			KNB073FRVMC	
9	U01 A01 900 U01 A04 900	COMPRESSOR (SNB092FQAMT) COMPRESSOR (SNB130FQBMT)	MC			1	1	1	1				1		SNB092FQAMT SNB130FQBMT	
									1	1				1		
10	U01 A01 641	SERVICE PORT (L)		1	1	1	1	1	1	1	1	1	1	1		
11	U01 A01 662	STOP VALVE (LIQ)		1	1	1	1	1	1	1	1	1	1	1	ø1/4 (ø6.35)	
12	U01 A02 661 U01 A01 661	STOP VALVE (GAS)								1	1			1	ø1/2 (ø12.7)	
				1	1	1	1	1	1			1	1		ø3/8 (ø9.52)	
13	U01 A01 233	BACK PANEL		1	1	1	1	1	1	1	1	1	1	1		
14	U01 A01 245	SERVICE PANEL		1	1	1	1	1	1	1	1	1	1	1		
15	U01 A01 640	EXPANSION VALVE		1	1	1	1	1	1	1	1	1	1	1		
16	U01 A01 936	CAPILLARY TUBE		4	4	4	4	4	4	4	4	4	4	4	O.D. 0.118 × I.D. 0.079 × 8-9/32 (ø3.0 × ø2.0 × 210)	
17	U01 A01 493	EXPANSION VALVE COIL	LEV	1	1	1	1	1	1	1	1	1	1	1		
18	U01 A02 961 U01 A01 961	4-WAY VALVE		1	1											
						1	1	1	1	1	1	1	1	1		
19	U01 A01 490	R.V. COIL	21S4	1	1	1	1	1	1	1	1					
20	U01 A03 308	AMBIENT TEMPERA- TURE THERMISTOR	RT65	1	1	1	1	1	1	1	1	1	1	1		
21	U01 A02 307	OUTDOOR HEAT EXC. TEMP THERMISTOR	RT68	1	1	1	1	1	1	1	1	1	1	1		
22	U01 A01 306	THERMISTOR SET	RT61, RT62	1	1	1	1	1	1	1	1				DEFROST, DISCHARGE TEMPERATURE	
	U01 A01 309	DISCHARGE TEMPERATURE THERMISTOR	RT62									1	1	1		
23	U01 A02 337 U01 A01 337	REACTOR	L61	1	1							1				
						1	1	1	1	1	1		1	1		
24	U01 A01 374	TERMINAL BLOCK	TB	1	1	1	1	1	1	1	1	1	1	1	5 P	
25	U01 A10 451	INVERTER P.C. BOARD		1											Including heat sink and RT64	
	U01 A07 451				1											
	U01 A17 451					1										
	U01 A16 451					1										
	U01 A08 451						1									
	U01 A09 451							1								
	U01 A11 451					1										
	U01 A12 451							1								
	U01 A13 451									1						
	U01 A14 451											1				
U01 A15 451												1				
26	U01 A02 641	SERVICE PORT (H)		1	1	1	1	1	1	1	1	1	1	1		
27	U01 A01 525	CONDENSER WIRE NET		1	1	1	1	1	1	1	1	1	1	1		
28	U01 A01 523	CONDENSER NET		1	1	1	1	1	1	1	1	1	1	1		
29	U01 A01 630	OUTDOOR HEAT EXCHANGER		1	1	1	1	1	1	1	1	1	1	1		
30	U01 A02 079	THERMO HOLDER		1	1	1	1	1	1	1	1	1	1	1		
31	U01 A01 515	MOTOR SUPPORT		1	1	1	1	1	1	1	1	1	1	1		
32	U01 A01 297	TOP PANEL		1	1	1	1	1	1	1	1	1	1	1		
33	U01 A01 526	DEFROST HEATER	H		1		1		1		1				Including lead assembly	
34	U01 A01 381	HEATER PROTECTOR	26H		1		1		1		1					
35	U01 M01 987	LOGO LABEL		1	1	1	1	1	1	1	1	1	1	1		
③6	U01 A03 936	CAPILLARY TUBE		1	1										O.D. 0.118 × I.D. 0.079 × 9-7/16 (ø3.0 × ø2.0 × 240)	
	U01 A02 936	CAPILLARY TUBE				1	1	1	1	1	1	1	1	1	O.D. 0.157 × I.D. 0.094 × 9-7/16 (ø4.0 × ø2.4 × 240)	

SERVICE PARTS LIST

MUZ-GL09NA - U2

MUZ-GL09NAH - U2

MUY-GL09NA - U2

MUZ-GL12NA - U2

MUZ-GL12NAH - U2

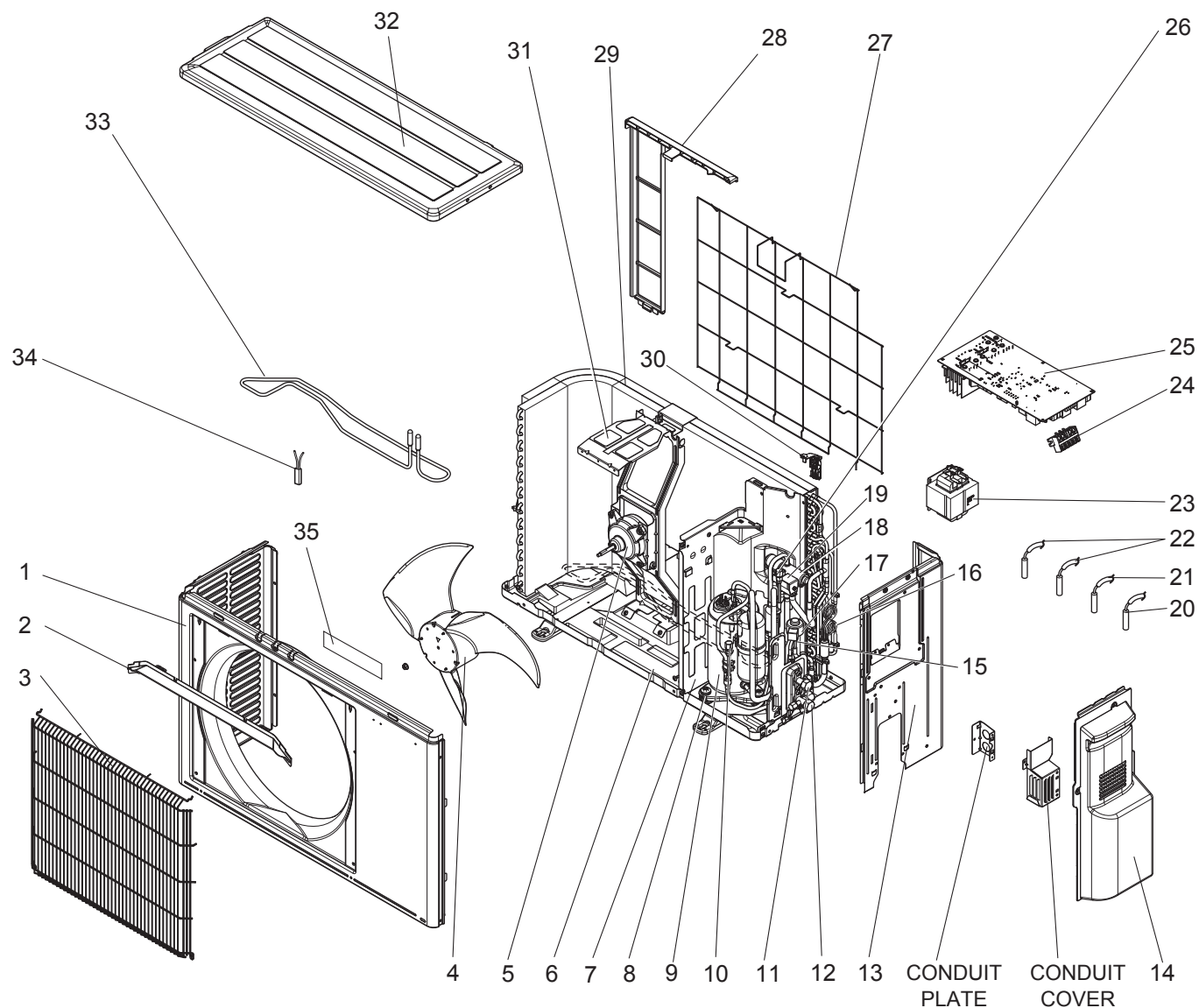
MUY-GL12NA - U2

MUZ-GL15NA - U2

MUZ-GL15NAH - U2

MUY-GL15NA - U2

1-2. OUTDOOR UNIT STRUCTURAL PARTS, ELECTRICAL PARTS AND FUNCTIONAL PARTS



1-2. OUTDOOR UNIT STRUCTURAL PARTS, ELECTRICAL PARTS AND FUNCTIONAL PARTS

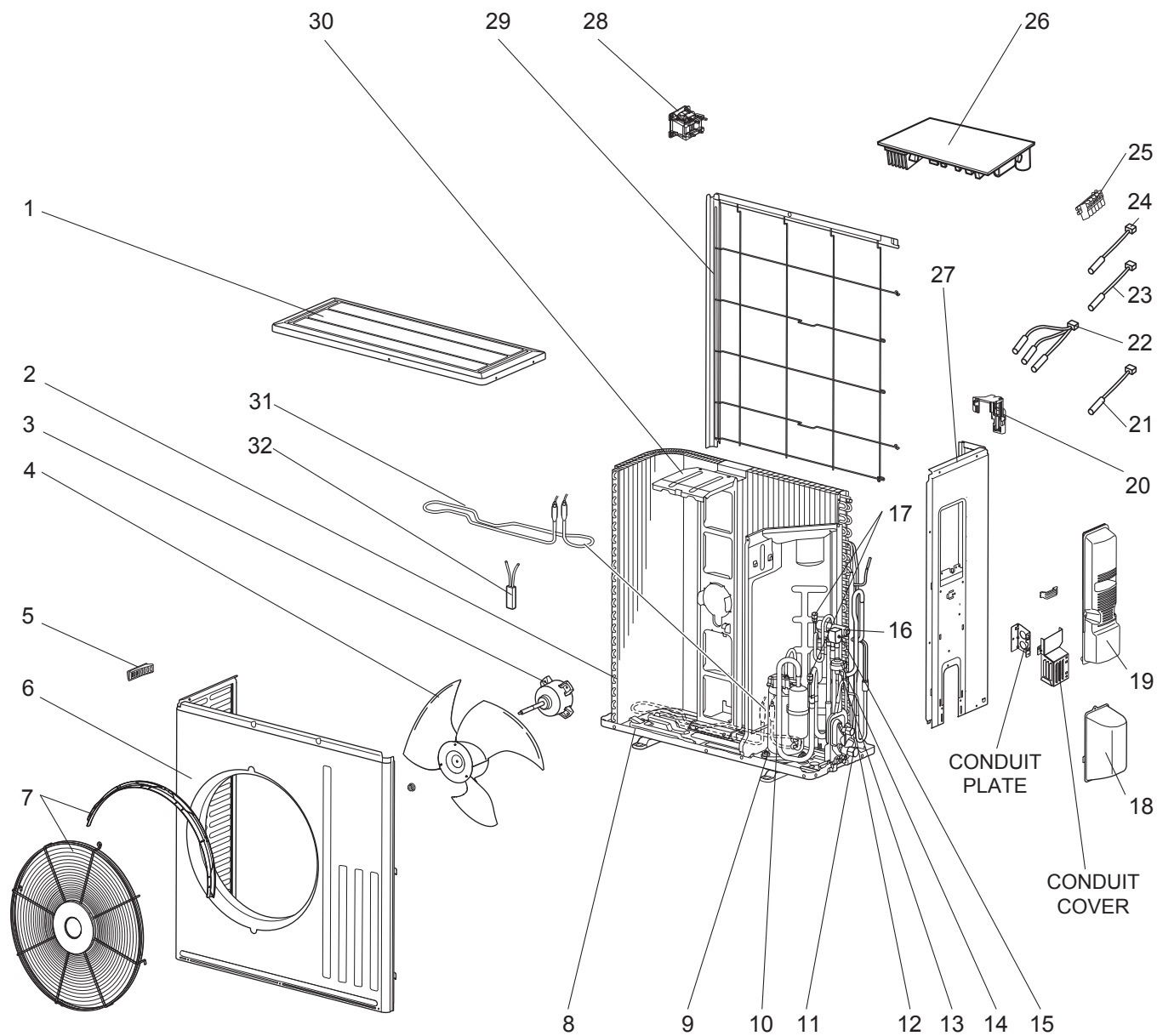
Part number that is circled is not shown in the illustration.

No.	Part No.	Part Name	Symbol in Wiring Diagram	Q'ty/unit									Remarks
				MUZ-GL						MUY-GL			
				09 NA	09 NAH	12 NA	12 NAH	15 NA	15 NAH	09 NA	12 NA	15 NA	
				- [U2]	- [U2]	- [U2]	- [U2]	- [U2]	- [U2]	- [U2]	- [U2]	- [U2]	
1	U01 A01 232	CABINET		1	1	1	1	1	1	1	1	1	
2	U01 A01 531	ICE GUARD		1	1	1	1	1	1	1	1	1	
3	U01 A02 521	GRILLE		1	1	1	1	1	1	1	1	1	
4	U01 A01 501	PROPELLER FAN		1	1	1	1	1	1	1	1	1	
5	U01 A03 301	OUTDOOR FAN MOTOR	MF	1	1	1	1	1	1	1	1	1	RC0J55-□□
6	U01 A02 290 U01 A01 290	BASE		1		1		1		1	1	1	
7	U01 A02 293 U01 A01 293	SEPARATOR		1		1		1		1	1	1	
8	U01 A01 506	COMP. RUBBER SET		3	3	3	3	3	3	3	3	3	3 RUBBERS/SET
9	U01 A07 900	COMPRESSOR (KNB073FRXMC)	MC	1	1					1			KNB073FRXMC
	U01 A01 900	COMPRESSOR (SNB092FQAMT)							1		SNB092FQAMT		
	U01 A04 900	COMPRESSOR (SNB130FQBMT)							1		SNB130FQBMT		
10	U01 A01 641	SERVICE PORT (L)		1	1	1	1	1	1	1	1	1	
11	U01 A01 662	STOP VALVE (LIQ)		1	1	1	1	1	1	1	1	1	ø1/4 (ø6.35)
12	U01 A02 661	STOP VALVE (GAS)						1	1			1	ø1/2 (ø12.7)
	U01 A01 661			1	1	1	1			1	1	ø3/8 (ø9.52)	
13	U01 A01 233	BACK PANEL		1	1	1	1	1	1	1	1	1	
14	U01 A01 245	SERVICE PANEL		1	1	1	1	1	1	1	1	1	
15	U01 001 401	EXPANSION VALVE		1	1	1	1	1	1	1	1	1	
16	U01 A01 936	CAPILLARY TUBE		4	4	4	4	4	4	4	4	4	O.D. 0.118 × I.D. 0.079 × 8-9/32 (ø3.0 × ø2.0 × 210)
17	U01 A01 493	EXPANSION VALVE COIL	LEV	1	1	1	1	1	1	1	1	1	
18	U01 A04 961	4-WAY VALVE		1	1	1	1			1	1		
	U01 A01 961						1	1		1			
19	U01 A01 490 U01 A03 490	R.V. COIL	21S4					1	1				
				1	1	1	1						
20	U01 A03 308	AMBIENT TEMPERATURE THERMISTOR	RT65	1	1	1	1	1	1	1	1	1	
21	U01 A02 307	OUTDOOR HEAT EXC. TEMP THERMISTOR	RT68	1	1	1	1	1	1	1	1	1	
22	U01 A01 306	THERMISTOR SET	RT61, RT62	1	1	1	1	1	1				DEFROST,DISCHARGE TEMPERATURE
	U01 A01 309	DISCHARGE TEMPERATURE THERMISTOR	RT62							1	1	1	
23	U01 A02 337 U01 A01 337	REACTOR	L61	1	1					1			
24	U01 A01 374	TERMINAL BLOCK	TB	1	1	1	1	1	1	1	1	1	5 P
25	U01 A40 451	INVERTER P.C. BOARD			1								Including heat sink and RT64
	U01 A41 451					1							
	U01 A42 451							1					
	U01 A43 451		1										
	U01 A44 451				1								
	U01 A45 451						1						
	U01 A46 451								1				
	U01 A47 451										1		
	U01 A48 451											1	
26	U01 A02 641	SERVICE PORT (H)		1	1	1	1	1	1	1	1	1	
27	U01 A01 525	CONDENSER WIRE NET		1	1	1	1	1	1	1	1	1	
28	U01 A01 523	CONDENSER NET		1	1	1	1	1	1	1	1	1	
29	U01 A01 630	OUTDOOR HEAT EXCHANGER		1	1	1	1	1	1	1	1	1	
30	U01 A02 079	THERMO HOLDER		1	1	1	1	1	1	1	1	1	
31	U01 A01 515	MOTOR SUPPORT		1	1	1	1	1	1	1	1	1	
32	U01 A01 297	TOP PANEL		1	1	1	1	1	1	1	1	1	
33	U01 A01 526	DEFROST HEATER	H			1			1				Including lead assembly
34	U01 A01 381	HEATER PROTECTOR	26H			1			1				
35	U01 M01 987	LOGO LABEL		1	1	1	1	1	1	1	1	1	
36	U01 A03 936	CAPILLARY TUBE		1	1					1			O.D. 0.118 × I.D. 0.079 × 9-7/16 (ø3.0 × ø2.0 × 240)
	U01 A02 936	CAPILLARY TUBE					1	1	1	1		1	O.D. 0.157 × I.D. 0.094 × 9-7/16 (ø4.0 × ø2.4 × 240)

SERVICE PARTS LIST

MUZ-GL18NA MUZ-GL18NAH MUY-GL18NA

1-3. OUTDOOR UNIT STRUCTURAL PARTS, ELECTRICAL PARTS AND FUNCTIONAL PARTS



1-3. OUTDOOR UNIT STRUCTURAL PARTS, ELECTRICAL PARTS AND FUNCTIONAL PARTS

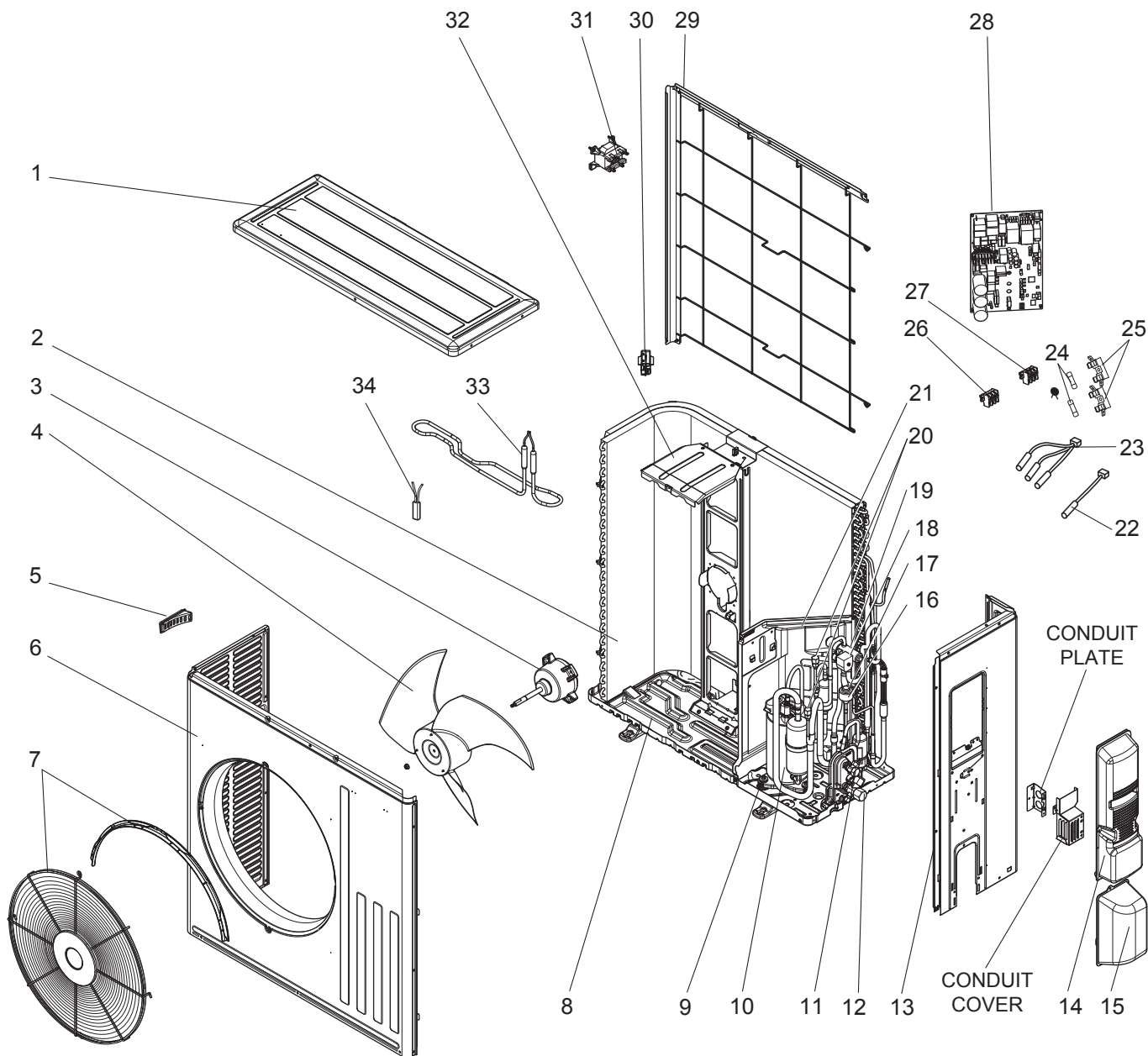
Part numbers that are circled are not shown in the illustration.

No.	Part No.	Part Name	Symbol in Wiring Diagram	Q'ty/unit			Remarks
				MUZ-GL18		MUY-GL18	
				NA- [U1]	NAH- [U1]	NA- [U1]	
1	E12 L87 297	TOP PANEL		1	1	1	
2	E12 N94 630	OUTDOOR HEAT EXCHANGER		1	1	1	
3	E12 N87 301	OUTDOOR FAN MOTOR	MF	1	1	1	RC0J77-□□
4	E12 F28 501	PROPELLER FAN		1	1	1	
5	E12 817 009	HANDLE		1	1	1	
6	E12 N94 232	CABINET		1	1	1	
7	E12 L87 521	FAN GUARD		1	1		Including ice guard
	E12 N94 521					1	
8	E12 F28 290	BASE		1		1	
	E12 H25 290				1		
9	E12 C34 506	COMPRESSOR RUBBER SET		3	3	3	3 RUBBERS/SET
10	E12 N94 900	COMPRESSOR	MC	1	1	1	SNB130FQBMT
11	E12 L87 661	STOP VALVE (GAS)		1	1	1	ø1/2 (ø12.7)
12	E12 L87 662	STOP VALVE (LIQUID)		1	1	1	ø1/4 (ø6.35)
13	E12 851 640	EXPANSION VALVE		1	1	1	
14	E12 F28 493	EXPANSION VALVE COIL	LEV	1	1	1	
15	E12 N91 490	R.V. COIL	21S4	1	1		
16	E12 A56 961	4-WAY VALVE		1	1	1	
17	E12 E79 641	SERVICE PORT		2	2	2	
18	E12 F28 650	VALVE COVER		1	1	1	
19	E12 N94 245	SERVICE PANEL		1	1	1	
20	E12 F28 079	THERMO HOLDER		1	1	1	
21	E12 G16 309	AMBIENT TEMPERATURE THERMISTOR	RT65	1	1	1	
22	E12 G16 308	THERMISTOR SET	RT61, RT62, RT68	1	1		DEFROST, DISCHARGE TEMPERATURE, OUTDOOR HEAT EXCHANGER TEMPERATURE
23	E12 N94 308	DISCHARGE TEMPERATURE THERMISTOR	RT62			1	
24	E12 G16 307	OUTDOOR HEAT EXCHANGER TEMPERATURE THERMISTOR	RT68			1	
25	E12 L85 374	TERMINAL BLOCK	TB	1	1	1	5 P
26	E12 N91 451	INVERTER P.C. BOARD		1			Including heat sink and RT64
	E12 N92 451				1		
	E12 N94 451					1	
27	E12 N94 233	BACK PANEL		1	1	1	
28	E12 H21 337	REACTOR	L61	1			
	E12 N94 337				1	1	
29	E12 L87 523	CONDENSER NET		1	1	1	
30	E12 F28 515	MOTOR SUPPORT		1	1	1	
31	E12 J52 526	DEFROST HEATER	H		1		
32	E12 J52 381	HEATER PROTECTOR	26H		1		
③③	E12 262 936	CAPILLARY TUBE		1	1	1	O.D. 0.157 × I.D. 0.094 × 7-7/8 (ø4.0 × ø2.4 × 200)
③④	E12 838 936	CAPILLARY TUBE		4	4	4	O.D. 0.118 × I.D. 0.079 × 7-7/8 (ø3.0 × ø2.0 × 200)
③⑤	E12 527 936	CAPILLARY TUBE		1	1	1	O.D. 0.157 × I.D. 0.094 × 3-15/16 (ø4.0 × ø2.4 × 100)

SERVICE PARTS LIST

MUZ-GL24NA MUZ-GL24NAH MUY-GL24NA

1-4. OUTDOOR UNIT STRUCTURAL PARTS, ELECTRICAL PARTS AND FUNCTIONAL PARTS



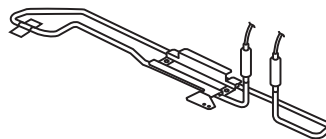
1-4. OUTDOOR UNIT STRUCTURAL PARTS, ELECTRICAL PARTS AND FUNCTIONAL PARTS

Part numbers that are circled are not shown in the illustration.

No.	Part No.	Part Name	Symbol in Wiring Diagram	Q'ty/unit				Remarks
				MUZ-GL24			MUY-GL24	
				NA- <u>U1</u>	NA- <u>U2</u>	NAH- <u>U1</u>	NA- <u>U1</u>	
1	E12 L87 297	TOP PANEL		1	1	1	1	
2	E12 T16 630 E12 T17 630	OUTDOOR HEAT EXCHANGER		1	1	1		
3	E12 F76 301	OUTDOOR FAN MOTOR	MF	1	1	1	1	RC0J77-□□
4	E12 F28 501	PROPELLER FAN		1	1	1	1	
5	E12 817 009	HANDLE		1	1	1	1	
6	E12 T16 232	CABINET		1	1	1	1	
7	E12 F73 521 E12 F28 521	FAN GUARD		1	1	1		Including ice guard
8	E12 F28 290 E12 H25 290	BASE		1	1		1	
9	E12 C34 506	COMPRESSOR RUBBER SET		3	3	3	3	3 RUBBERS/SET
10	E12 F76 900	COMPRESSOR	MC	1	1	1	1	SNB172FQKMT
11	E12 F29 662	STOP VALVE (LIQUID)		1	1	1	1	ø3/8 (ø9.52)
12	E12 F76 661	STOP VALVE (GAS)		1	1	1	1	ø5/8 (ø15.88)
13	E12 F76 233	BACK PANEL		1	1	1	1	
14	E12 J61 245	SERVICE PANEL		1	1	1	1	
15	E12 F28 650	VALVE COVER		1	1	1	1	
16	E12 F28 493	EXPANSION VALVE COIL	LEV	1	1	1	1	
17	E12 853 640	EXPANSION VALVE		1	1	1	1	
18	E12 F76 490	R.V. COIL	21S4	1	1	1		
19	E12 A56 961	4-WAY VALVE		1	1	1	1	
20	E12 E79 641	SERVICE PORT (H, L)		2	2	2	2	
21	E12 R08 293 E12 J67 293	SEPARATOR		1	1		1	
22	E12 J52 309	AMBIENT TEMPERATURE THERMISTOR	RT65	1	1	1	1	
23	E12 F28 308 E12 F33 308	THERMISTOR SET	RT61, RT62, RT68 RT62, RT68	1	1	1		DEFROST, DISCHARGE TEMPERATURE, OUTDOOR HEAT EXCHANGER TEMPERATURE DISCHARGE TEMPERATURE, OUTDOOR HEAT EXCHANGER TEMPERATURE
24	E12 250 382	FUSE	F65, F66	2	2	2	2	T6.3AL 250 V AC
25	E17 001 241	FUSE HOLDER		2	2	2	2	
26	E12 L87 374	TERMINAL BLOCK	TB1	1	1	1	1	3 P
27	E12 T16 374	TERMINAL BLOCK	TB2	1	1	1	1	3 P
28	E12 T16 451 E12 T18 451 E12 T17 451	INVERTER P.C. BOARD		1	1	1		Including heat sink and RT64
29	E12 L87 523	CONDENSER NET		1	1	1	1	
30	E12 F76 079	THERMO HOLDER		1	1	1	1	
31	E12 F28 337	REACTOR	L	1	1	1	1	
32	E12 J52 515	MOTOR SUPPORT		1	1	1	1	
33	E12 J52 526	DEFROST HEATER	H			1		
34	E12 J52 381	HEATER PROTECTOR	26H			1		
③⑤	E12 527 936	CAPILLARY TUBE		1	1	1	1	O.D. 0.157 × I.D. 0.094 × 3-15/16 (ø4.0 × ø2.4 × 100)
③⑥	E12 T18 936	CAPILLARY TUBE			1	1		O.D. 0.118 × I.D. 0.071 × 21-21/32 (ø3.0 × ø1.8 × 550)

2-1. DEFROST HEATER

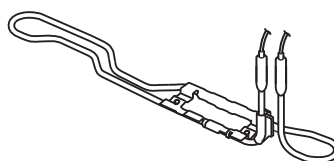
Model	Parts No.
MUZ-GL09NA MUZ-GL12NA MUZ-GL15NA	MAC-640BH-U



Components

① Defrost heater	1	④ Cable tie	1
② Aluminum tape	1	⑤ Self drilling screw	2
③ Heater support	1	⑥ Insulation	1

Model	Parts No.
MUZ-GL18NA MUZ-GL24NA	MAC-642BH-U1



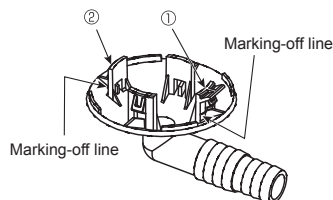
Components

① Defrost heater	1	④ Cable clamp	1
② Heater support	1	⑤ Self drilling screw	2
③ Cable tie	1	⑥ Wiring diagram	1

Note: Refer to the installation manual for the installation.

2-2. DRAIN SOCKET

Model	Parts No.
MUZ-GL09NA MUZ-GL12NA MUZ-GL15NA MUZ-GL18NA MUZ-GL24NA	MAC-860DS



Installing a Drain Socket

For Φ 1-5/8 (Φ 42) hole

Put the tab ① in the hole first, and then the tab ②.

MITSUBISHI ELECTRIC CORPORATION

HEAD OFFICE: TOKYO BUILDING, 2-7-3, MARUNOUCHI, CHIYODA-KU, TOKYO 100-8310, JAPAN

© Copyright 2015 MITSUBISHI ELECTRIC CORPORATION

Issued: Apr. 2019. No. OBB733 REVISED EDITION-G

Issued: Nov. 2018. No. OBB733 REVISED EDITION-F

Issued: Feb. 2018. No. OBB733 REVISED EDITION-E

Issued: Mar. 2017. No. OBB733 REVISED EDITION-D

Issued: Sep. 2016. No. OBB733 REVISED EDITION-C

Issued: Jan. 2016. No. OBB733 REVISED EDITION-B

Issued: Nov. 2015. No. OBB733 REVISED EDITION-A

Published: Sep. 2015. No. OBB733

Made in Japan

Specifications are subject to change without notice.