

**PCA-A24KA7 & PUY-A24NHA7**  
**24,000 BTU/H COOLING ONLY OUTDOOR**  
**24,000 BTU/H CEILING-SUSPENDED INDOOR UNIT**



Job Name:

System Reference:

Date:



Indoor Unit.....PCA-A24KA7

Outdoor Unit.....PUY-A24NHA7

**INDOOR UNIT FEATURES**

- Airflow settings for high and low ceiling applications
- Knock-out for outside-air intake
- Optional i-see Sensor™ for air distribution and energy saving
- Auto fan speed mode
- Filter status indicator
- Easy-to-clean, washable filter
- Suspends from ceiling for quick and easy installation
- Ideal for larger retail stores, classrooms, and restaurants
- Multiple control options available:
  - kumo cloud® smart device app for remote access
  - Third-party interface options
  - Wired or wireless controllers

**OUTDOOR UNIT FEATURES**

- Variable speed INVERTER-driven compressor
- Pre-charged with refrigerant volume for piping length up to 70 ft
- Low ambient cooling down to -40°F providing 100% capacity (with wind baffles)
- 24-hour continuous operation (cooling mode)
- High pressure protection
- Fast restart
- Superior energy and operational efficiency
- Seacoast protection\*
  - External Outer Panel: Phosphate coating + Acrylic-Enamel coating
  - Fan Motor Support: Epoxy resin coating (at edge face)
  - Separator Assembly Valve Bed: Epoxy resin coating (at edge face)
  - Blue Fin treatment is an anti-corrosion treatment that is applied to the Heat exchanger coil to protect it against airborne contaminants.
  - Heat exchanger coil and base panel rated for 2,000 hours in accordance with ASTM B117 testing

\*Seacoast protection standard from 2022 production

# SPECIFICATIONS: PCA-A24KA7 & PUY-A24NHA7

|  |  |                     |  |
|--|--|---------------------|--|
| Cooling at 95°F <sup>1</sup>             | Maximum Capacity   | BTU/H               | 24,000   |
|  | Rated Capacity   | BTU/H               | 24,000   |
|  | Minimum Capacity   | BTU/H               | 10,000   |
|  | Maximum Power Input  | W                   | 1,960  |
|  | Rated Power Input  | W                   | 1,960  |
|  | Moisture Removal   | Pints/h             | 5.8  |
|  | Sensible Heat Factor                                       |                     | 0.73   |
|  | Power Factor [208V / 230V]                                 | %                   | 94.7 / 94.7  |
| Efficiency                               | SEER   SEER2   |                     | 21.2   |
|  | EER <sup>1</sup>   EER2 <sup>1</sup>                       |                     | 12.2   |
|  | ENERGY STAR® Certified                                     |                     | No   |
| Electrical                               | Voltage, Phase, Frequency                                  |                     | 208/230, 1, 60   |
|  | Guaranteed Voltage Range                                   | V AC                | 198 - 253  |
|  | Voltage: Indoor - Outdoor, S1-S2                           | V AC                | 208/230  |
|  | Voltage: Indoor - Outdoor, S2-S3                           | V DC                | 24   |
|  | Short-circuit Current Rating [SCCR]                        | kA                  | 5  |
|  | Recommended Fuse/Breaker Size (Outdoor)                    | A                   | 25   |
|  | Recommended Wire Size [Indoor - Outdoor]                   | AWG                 | 14   |
|  | Power Supply   |                     | Indoor unit is powered by the outdoor unit               |
| Indoor Unit                              | MCA  | A                   | 1.0  |
|  | Fan Motor Full Load Amperage                               | A                   | 0.54   |
|  | Fan Motor Type   |                     | DC Motor   |
|  | Airflow Rate at Cooling, Dry                               | CFM                 | 530–565–600–670  |
|  | Airflow Rate at Cooling, Wet                               | CFM                 | 495–530–565–635  |
|  | Airflow Rate at Heating, Dry                               | CFM                 | 530–565–600–670  |
|  | Sound Pressure Level [Cooling]                             | dB[A]               | 33–35–37–40  |
|  | Sound Pressure Level [Heating]                             | dB[A]               | 33–35–37–40  |
|  | Drain Pipe Size  | In. [mm]            | 1-1/32 [26]  |
|  | Coating on Heat Exchanger                                  |                     | —  |
|  | External Finish Color                                      |                     | White Munsell 6.4Y 8.9/0.4                               |
|  | Unit Dimensions  | W x D x H: In. [mm] | 50-3/8 x 26-3/4 x 9-1/16 [1,280 x 680 x 230]             |
|  | Package Dimensions   | W x D x H: In. [mm] | 53-1/8 x 29-15/16 x 12-5/8 [1,350 x 760 x 320]           |
| Indoor Unit Operating Temperature Range  | Unit Weight  | Lbs. [kg]           | 71 [32]  |
|  | Package Weight   | Lbs. [kg]           | 82 [37]  |
| Indoor Unit Operating Temperature Range  | Cooling Intake Air Temp [Maximum / Minimum]*               | °F                  | 90 DB, 72 WB / 68 DB, 61 WB                              |
|  |  |                     |  |
| Outdoor Unit                             | MCA  | A                   | 19.0   |
|  | MOCP   | A                   | 26   |
|  | Fan Motor Full Load Amperage                               | A                   | 0.4  |
|  | Fan Motor Output   | W                   | 86   |
|  | Airflow Rate [Cooling / Heating]                           | CFM                 | 1940   |
|  | Refrigerant Control  |                     | LEV  |
|  | Defrost Method   |                     | Reverse Cycle  |
|  | Coating on Heat Exchanger                                  |                     | Blue Fin Coating***                                      |
|  | Sound Pressure Level, Cooling <sup>1</sup>                 | dB(A)               | 47   |
|  | Compressor Type  |                     | INVERTER-driven twin rotary                              |
|  | Compressor Model   |                     | SNB172FWHM1  |
|  | Compressor Rated Load Amps                                 | A                   | 7  |
|  | Compressor Locked Rotor Amps                               | A                   | 11.0   |
|  | Compressor Oil [Type // Charge]                            | oz.                 | FV50S // 23  |
|  | External Finish Color                                      |                     | Ivory Munsell 3Y 7.8/1.1                                 |
|  | Base Pan Heater  |                     | N/A  |
|  | Unit Dimensions  | W x D x H: In. [mm] | 37-13/32 x 13 (+1-3/16) x 37-1/8 [950 x 330 (+30) x 943] |
|  | Package Dimensions   | W x D x H: In. [mm] | 40-15/16 x 17-11/16 x 40-11/16 [1040 x 450 x 1033]       |
| Outdoor Unit Operating Temperature Range | Unit Weight  | Lbs. [kg]           | 151 [68]   |
|  | Package Weight   | Lbs. [kg]           | 176 [80]   |
| Outdoor Unit Operating Temperature Range | Cooling Air Temp [Maximum / Minimum]*                      | °F                  | 115 DB / -40 DB  |
|  |  |                     |  |
| Refrigerant                              | Type   |                     | R410A  |
|  | Pre-Charged Refrigerant Amount                             | Lbs, oz             | 7.0, 11.0  |
|  | Maximum Pre-Charged Piping Length                          | Ft. [m]             | 70.0 [20.0]  |
|  | Additional Refrigerant Charge Per Additional Piping Length | oz./Ft. [g/m]       | 0.3 [22.5]   |

NOTES:  
 AHRI Rated Conditions  
 (Rated data is determined at a fixed compressor speed)    <sup>1</sup>Cooling (Indoor // Outdoor)    °F    80 DB, 67 WB // 95 DB, 75 WB

\*Indoor/Outdoor Unit Operating Temperature Range (Cooling Air Temp [Maximum / Minimum]):  
 • Wind baffles required to operate below 23°F DB in cooling mode.  
 • Cooling-only system with advanced wind baffle: -40°F - 115°F.  
 • Refer to wind baffle documentation for further information.

\*\*Outdoor Unit Operating Temperature Range (Cooling Thermal Lock-out / Re-start Temperatures; Heating Thermal Lock-out / Re-start Temperatures):  
 • System cuts out in heating mode to avoid thermistor error and automatically restarts at these temperatures.

\*\*\*Blue Fin Coating Standard from 2022 production:  
 • PU(Y/Z)-A(12/18)NKA7 - Beginning with serial number 12U\*\*\*\*\*  
 • PU(Y/Z)-A(24/30/36/42)NKA7 - Beginning with serial number 12U\*\*\*\*\*

## SPECIFICATIONS: PCA-A24KA7 & PUY-A24NHA7

|        |                                |         |             |
|--------|--------------------------------|---------|-------------|
| Piping | Gas Pipe Size O.D. [Flared]    | In.[mm] | 5/8 [15.88] |
|        | Liquid Pipe Size O.D. [Flared] | In.[mm] | 3/8 [9.52]  |
|        | Maximum Piping Length          | Ft. [m] | 225 [68]    |
|        | Maximum Height Difference      | Ft. [m] | 100 [30]    |
|        | Maximum Number of Bends        |         | 15          |

### NOTES:

AHRI Rated Conditions

(Rated data is determined at a fixed compressor speed)    <sup>1</sup>Cooling (Indoor // Outdoor)    °F    80 DB, 67 WB // 95 DB, 75 WB

\*Indoor/Outdoor Unit Operating Temperature Range (Cooling Air Temp [Maximum / Minimum]):

- Wind baffles required to operate below 23°F DB in cooling mode.
- Cooling-only system with advanced wind baffle: -40°F - 115°F.
- Refer to wind baffle documentation for further information.

\*\*Outdoor Unit Operating Temperature Range (Cooling Thermal Lock-out / Re-start Temperatures; Heating Thermal Lock-out / Re-start Temperatures):

- System cuts out in heating mode to avoid thermistor error and automatically restarts at these temperatures.

\*\*\*Blue Fin Coating Standard from 2022 production:

- PU(Y/Z)-A(12/18)NKA7 - Beginning with serial number 12U\*\*\*\*\*
- PU(Y/Z)-A(24/30/36/42)NKA7 - Beginning with serial number 12U\*\*\*\*\*

## INDOOR UNIT ACCESSORIES: PCA-A24KA7

|                            |   |                   |
|----------------------------|---|-------------------|
| Control Interface          | BACnet® and Modbus® Interface   | PAC-UKPRC001-CN-1 |
|                            | CN24 Relay Kit  | CN24RELAY-KIT-CM3 |
|                            | IT Extender   | PAC-WHS01IE-E     |
|                            | kumo station® for kumo cloud®   | PAC-WHS01HC-E     |
|                            | Remote Operation Adapter†   | PAC-SF40RM-E      |
|                            | Thermostat Interface  | PAC-US444CN-1     |
|                            | Thermostat Interface  | PAC-US445CN-1     |
|                            | USNAP Adapter   | PAC-WHS01UP-E     |
| Remote Sensor              | Flush Mount Remote Temperature Sensor   | PAC-USSEN002-FM-1 |
|                            | Flush Mount Temperature Sensor  | PAC-USSEN001-FM-1 |
|                            | Remote Temperature Sensor   | PAC-SE41TS-E      |
|                            | Wireless temperature and humidity sensor for kumo cloud®                                    | PAC-USWHS003-TH-1 |
| Wired Remote Controller    | Deluxe Wired MA Remote Controller†  | PAR-40MAAU        |
|                            | Simple Ductless Wired Remote Controller   | PAC-SDW01RC-1     |
|                            | Simple MA Remote Controller†  | PAC-YT53CRAU-J    |
|                            | Touch MA Controller†  | PAR-CT01MAU-SB    |
| Wireless Remote Controller | kumo touch™ RedLINK™ Wireless Controller  | MHK2              |
|                            | Lockdown bracket for remote controller  | RCMKP1CB          |
|                            | Wireless MA Receiver  | PAR-FA32MA-W      |
|                            | Wireless MA Remote Controller   | PAR-FL32MA-E      |
|                            | Wireless Receiver Kit   | PAR-SL93B-E       |
|                            | Wireless Receiver Kit with i-See sensor™  | PAR-SA92MW-E      |
| Condensate                 | Blue Diamond (Advanced) Mini Condensate Pump w/ Reservoir & Sensor (208/230V) [recommended] | X87-721           |
|                            | Blue Diamond (MegaBlue Advanced) Condensate Pump w/ Reservoir & Sensor                      | X87-835           |
|                            | Refco Condensate Pump (100-240 VAC) up to 120,000 BTU/H                                     | COMBI             |
| Disconnect Switch          | (30A/600V/UL) [fits 2" X 4" utility box] - Black  | TAZ-MS303         |
| Filter                     | 65% Medium Efficiency Filter (MERV 8)   | PAC-SH89KF-E      |
| Lineset                    | 10' x 3/8" x 10' x 5/8" Lineset (Twin-Tube Insulation)                                      | MPLS385812T-10    |
|                            | 100' x 3/8" x 100' x 5/8" Lineset (Twin-Tube Insulation)                                    | MPLS385812T-100   |
|                            | 15' x 3/8" x 15' x 5/8" Lineset (Twin-Tube Insulation)                                      | MPLS385812T-15    |
|                            | 30' x 3/8" x 30' x 5/8" Lineset (Twin-Tube Insulation)                                      | MPLS385812T-30    |
|                            | 50' x 3/8" x 50' x 5/8" Lineset (Twin-Tube Insulation)                                      | MPLS385812T-50    |
|                            | 65' x 3/8" x 65' x 5/8" Lineset (Twin-Tube Insulation)                                      | MPLS385812T-65    |

**NOTES:**

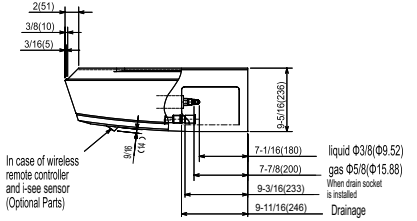
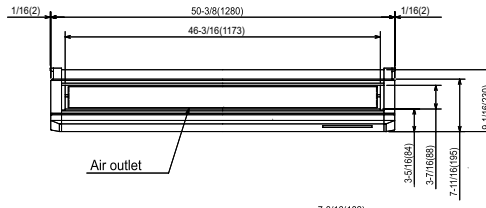
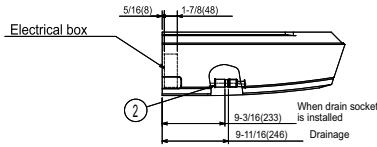
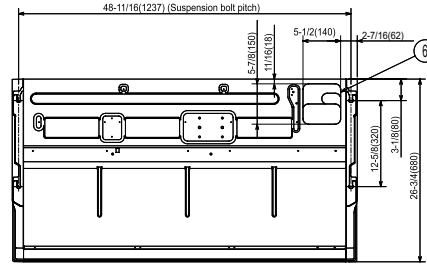
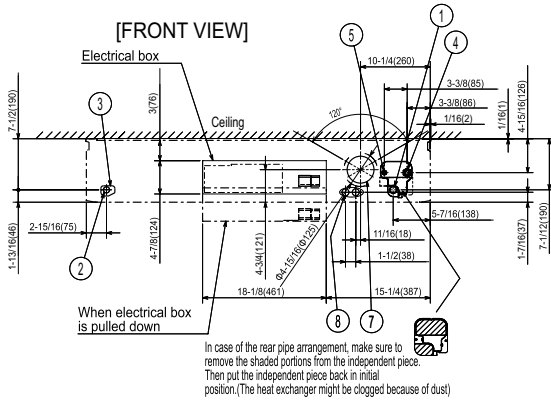
†PAC-SF40RM-E (Unable to use with wireless remote controller)

## OUTDOOR UNIT ACCESSORIES: PUY-A24NHA7

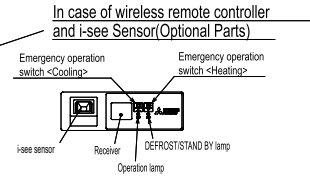
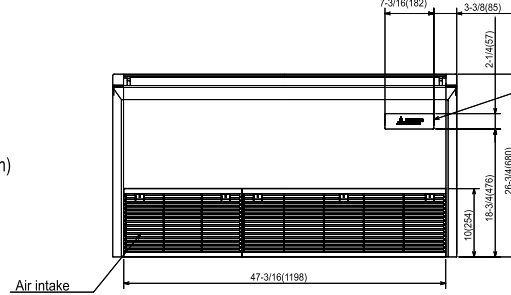
|                       |  |                |
|-----------------------|--|----------------|
| Air Outlet Guide      | Air Outlet Guide (1 Piece)                                     | PAC-SG59SG-E   |
| Centralized Drain Pan | Centralized Drain Pan  | PAC-SG63DP-E   |
|                       | Drain Pan  | PAC-SG64DP-E   |
| Control/Service Tool  | Control/Service Tool   | PAC-SK52ST     |
|                       | M- & P-Series Maintenance Tool Cable Set                       | M21EC0397      |
|                       | Maintenance Tool Interface                                     | PAC-USCMS-MN-1 |
|                       | USB/UART Conversion Cable (Required for all laptop connection) | M21EC1397      |
| Hail Guards           | Hail Guard   | HG-A6          |
| M-NET Converter       | M-NET Converter  | PAC-SJ85MA-E   |
|                       | M-NET Converter  | PAC-SJ95MA-E   |
| Mini-Split Wire       | 14 Gauge, 4 wire MiniSplit Cable—250 ft. roll                  | S144-250       |
|                       | 14 Gauge, 4 wire MiniSplit Cable—50 ft. roll                   | S144-50        |
|                       | 16 Gauge, 4 wire MiniSplit Cable—250 ft. roll                  | S164-250       |
|                       | 16 Gauge, 4 wire MiniSplit Cable—50 ft. roll                   | S164-50        |
| Mounting Pad          | Condensing Unit Mounting Pad: 24" x 42" x 3"                   | ULTRILITE2     |
| Stand                 | 18" Single Fan Stand   | QSMS1801M      |
|                       | 24" Single Fan Stand   | QSMS2401M      |
|                       | Condenser Wall Bracket   | QSWB2000M-1    |
|                       | Condenser Wall Bracket - Stainless Steel Finish                | QSWBSS         |
|                       | Outdoor Unit Stand — 12" High                                  | QSMS1201M      |
| Wind Baffle           | Front Wind Baffle  | WB-PA5         |
|                       | Rear Wind Baffle   | WB-RE5         |
|                       | Side Advanced Wind Baffle                                      | WB-SD5         |

# INDOOR UNIT DIMENSIONS: PCA-A24KA7

Unit: inch (mm)



- ① Drainage pipe connection(1(26mm)I.D.)
  - ② Drainage pipe connection(for the left arrangement)
  - ③ Knockout hole for left drain-piping arrangement
  - ④ Refrigerant-pipe connection(gas pipe side/flared connection)
  - ⑤ Refrigerant-pipe connection(liquid pipe side/flared connection)
  - ⑥ Knockout hole for upper drain pipe arrangement
  - ⑦ Knockout hole for fresh air intake Φ3-15/16(Φ100)
  - ⑧ Knockout hole for wiring arrangement Φ7/8(Φ22)
- Accessory...Drain socket (1(26mm) I.D.)



## NOTES.

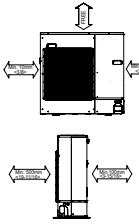
1. Use M10 or W3/8 screw for anchor bolt.
2. Please be sure when installing the drain pump (option parts), refrigerant pipe will be only upward.

# OUTDOOR UNIT DIMENSIONS: PUY-A24NHA7

Unit: mm<in>

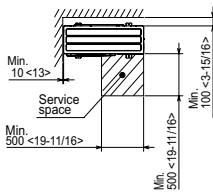
## 1 FREE SPACE (Around the unit)

The diagram below shows a basic example.  
Explanation of particular details are given in the installation manuals etc.



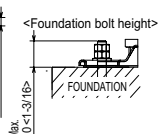
## 2 SERVICE SPACE

Dimensions of space needed for service access are shown in the below diagram.



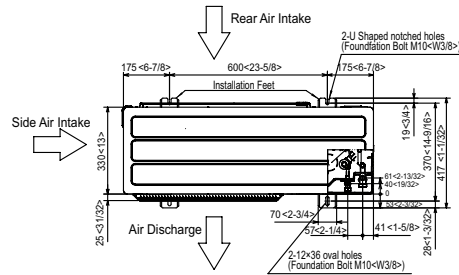
## 3 FOUNDATION BOLTS

Please secure the unit firmly with 4 foundation (M10<W3/8>) bolts. (Bolts and washers must be purchased locally.)



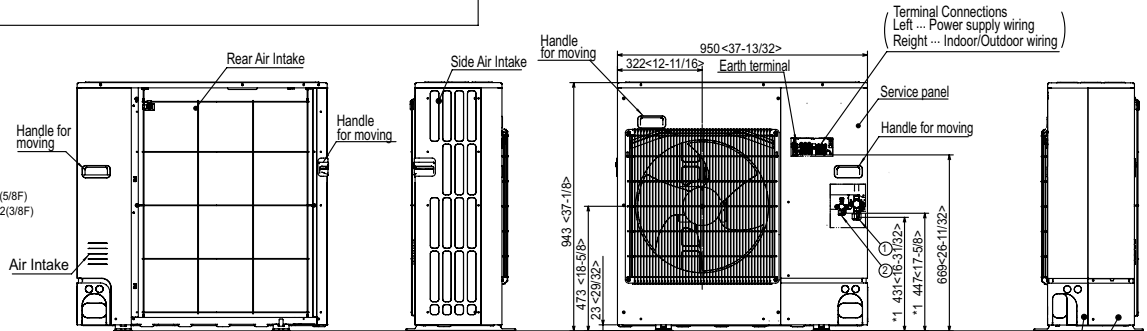
## 4 PIPING-WIRING DIRECTIONS

Piping and wiring connections can be made from 4 directions: FRONT, Right, Rear and Below.

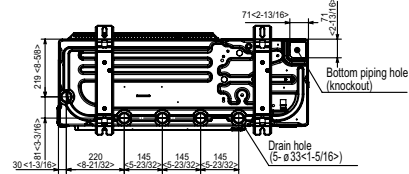
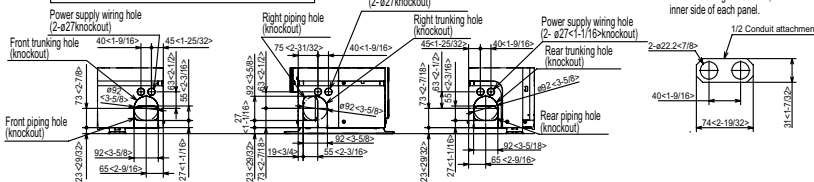


## Example of Notes

- ① --- Refrigerant GAS pipe connection (FLARE) ø15.88(5/8F)
- ② --- Refrigerant LIQUID pipe connection (FLARE) ø9.52(3/8F)
- \*1 --- Indication of STOP VALVE connection location.



## Piping knockout Hole Details



1340 Satellite Boulevard Suwanee, GA 30024  
Toll Free: 800-433-4822 www.mehvac.com

FORM# PCA-A24KA7 & PUY-A24NHA7 - 202304

