

PARTS CATALOG

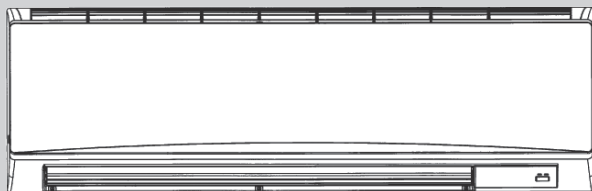
Series PKA Wall Mounted R410A

Indoor unit
[Model Name] [Service Ref.]

PKA-A24KA7	PKA-A24KA7.TH
PKA-A30KA7	PKA-A30KA7.TH
PKA-A36KA7	PKA-A36KA7.TH

Note:

- RoHS compliant products have <G> mark on the spec name plate.



INDOOR UNIT

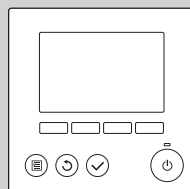
CONTENTS

1. RoHS PARTS LIST	2
--------------------------	---

SERVICE MANUAL (OCH639)



IR WIRELESS REMOTE
CONTROLLER
(Option)



WIRED REMOTE
CONTROLLER
(Option)

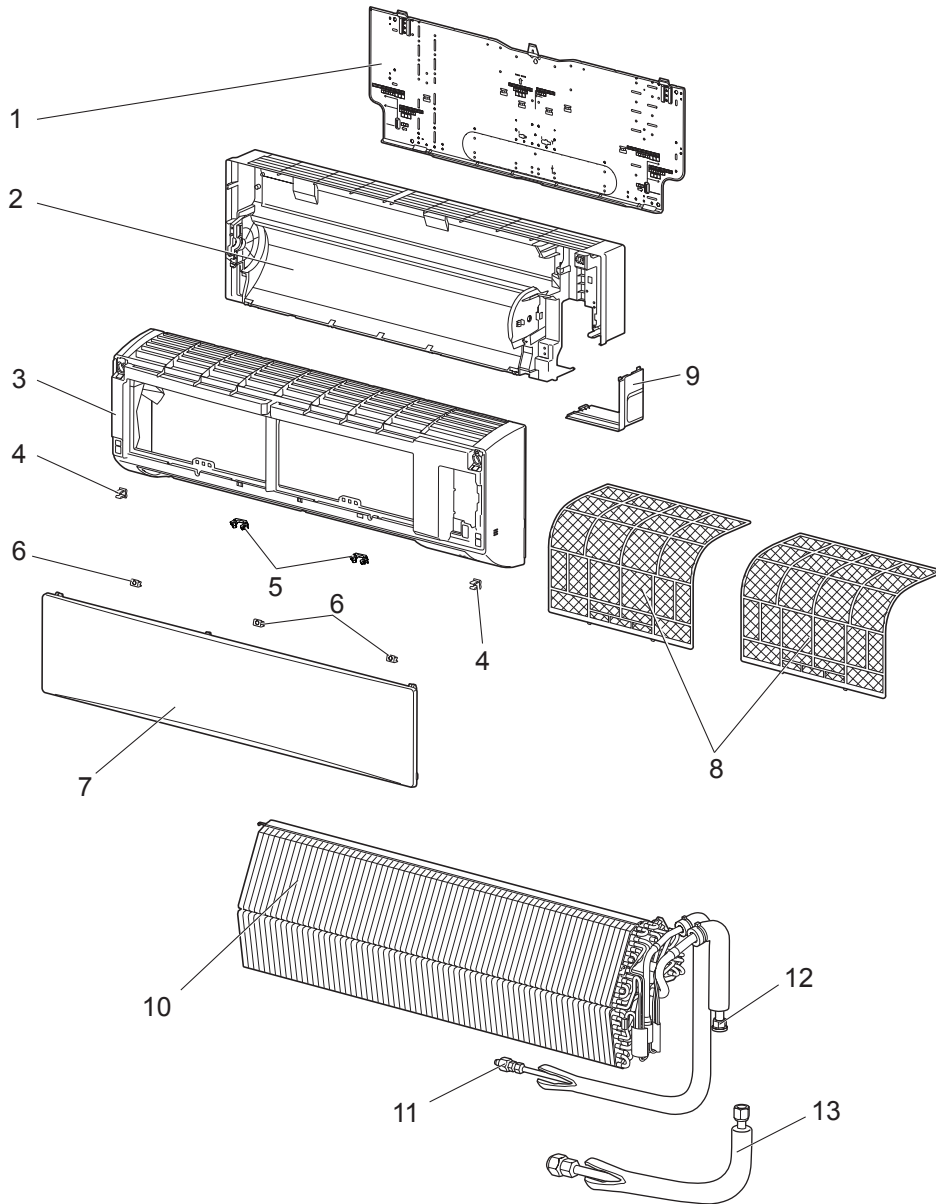
Mr. SLIM

PANEL AND HEAT EXCHANGER PARTS

PKA-A24KA7.TH

PKA-A30KA7.TH

PKA-A36KA7.TH



RoHS PARTS LIST

No.	RoHS	Parts No.	Parts Name	Specification	Q'ty/unit			Remarks (Drawing No.)	Wiring Diagram Symbol	Recom- mended Q'ty
					PKA-A24KA7.TH	PKA-A30KA7.TH	PKA-A36KA7.TH			
1	G	E12 C92 970	INSTALLATION PLATE		1	1	1			
2	G	E12 D20 234	BOX ASSEMBLY		1	1	1			
3	G	E17 B04 000	PANEL ASSEMBLY		1	1	1			
4	G	E12 408 142	CATCH		2	2	2	2 pcs/ set		
5	G	E12 C92 142	CATCH		2	2	2	2 pcs/ set		
6	G	E12 C92 067	SCREW CAP		3	3	3	3 pcs/ set		
7	G	E17 B04 010	FRONT PANEL		1	1	1			
8	G	E12 C92 100	CATECHIN AIR FILTER		2	2	2	1 pc/ set		
9	G	E12 C92 975	CORNER BOX R		1	1	1			
10	G	E17 520 620	HEAT EXCHANGER		1	1				
	G	E17 522 620	HEAT EXCHANGER				1			
11	G	E12 527 667	UNION (LIQ)		1	1	1			
12	G	E12 C92 666	UNION (GAS)		1	1	1			
13	G	E17 518 980	JOINT ASSEMBLY		1	1	1			

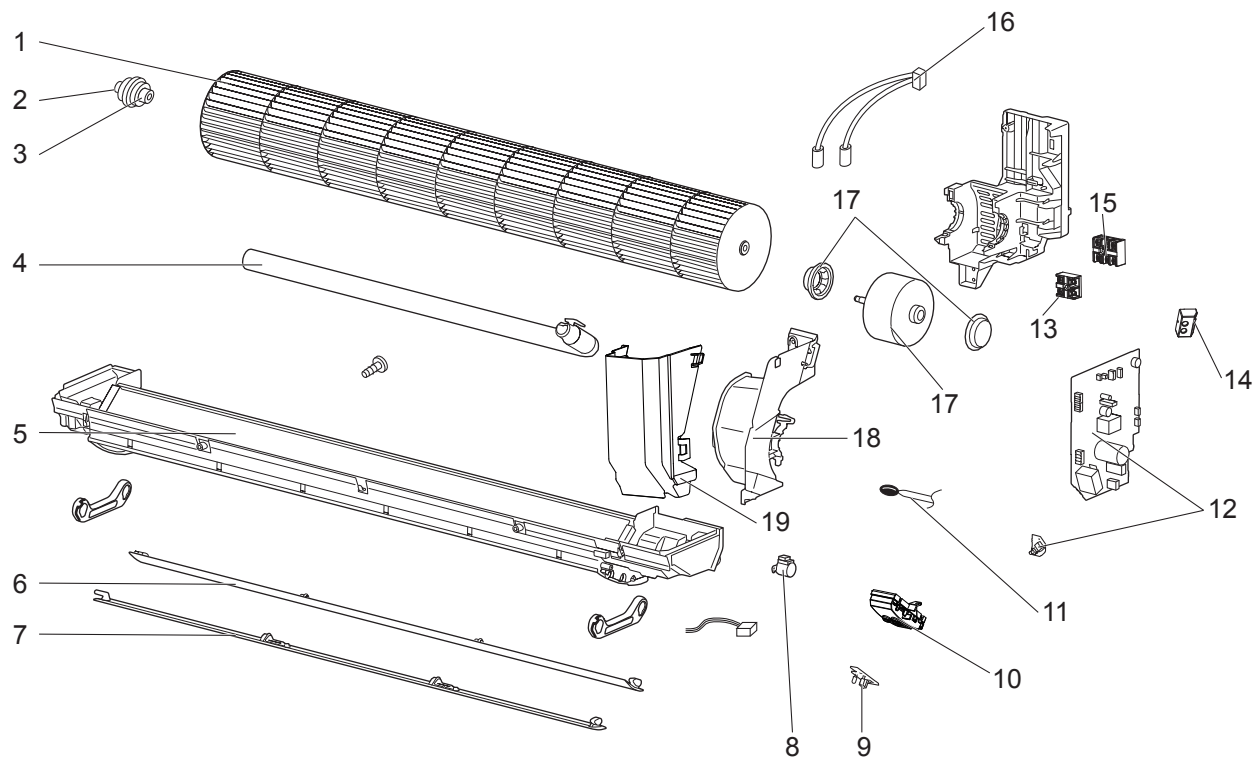
RoHS PARTS LIST

FUNCTIONAL PARTS

PKA-A24KA7.TH

PKA-A30KA7.TH

PKA-A36KA7.TH



RoHS PARTS LIST

Part numbers that are circled are not shown in the illustration.

No.	RoHS	Part No.	Part Name	Specification	Q'ty/unit			Remarks (Drawing No.)	Wiring Diagram Symbol	Recom- mended Q'ty
					PKA-A24KA7.TH	PKA-A30KA7.TH	PKA-A36KA7.TH			
1	G	E12 R79 302	LINE FLOW FAN		1	1	1			
2	G	E12 751 509	BEARING MOUNT		1	1	1			
3	G	E12 001 504	SLEEVE BEARING		1	1	1			
4	G	E12 T20 702	DRAIN HOSE		1	1	1			
5	G	E17 515 235	NOZZLE ASSEMBLY		1	1	1			
6	G	E12 C92 040	VANE UPPER		1	1	1			
7	G	E12 C92 041	VANE LOWER		1	1	1			
8	G	E12 749 303	VANE MOTOR		1	1	1		M	
9	G	E17 518 468	RECEIVER P.C. BOARD		1	1	1		W.B.	
10	G	E12 C92 095	RECEIVER HOLDER		1	1	1			
11	G	E17 518 308	ROOM TEMP. THERMISTOR		1	1	1		TH1	
12	G	E17 D91 447	INDOOR CONTROLLER BOARD		1	1	1		I.B., S.W.	
13	G	E17 516 375	TERMINAL BLOCK	2P (1, 2)	1	1	1		TB5	
14	G	E17 518 782	SWITCH HOLDER		1	1	1			
15	G	E17 491 375	TERMINAL BLOCK	3P (S1,S2,S3)	1	1	1		TB4	
16	G	E17 491 307	THERMISTOR (PIPE)		1	1	1		TH2,TH5	
17	G	E12 C92 300	FAN MOTOR		1	1	1		MS	
18	G	E12 C92 333	MOTOR BAND		1	1	1			
19	G	E17 518 541	WATER COVER		1	1	1			
20	G	E12 784 382	FUSE	3.15A 250V	1	1	1		FUSE	

Mr. SLIM

mitsubishi electric corporation

HEAD OFFICE : TOKYO BUILDING, 2-7-3, MARUNOUCHI, CHIYODA-KU, TOKYO 100-8310, JAPAN