

PARTS CATALOG

R410A

**No. OCB636
REVISED EDITION-B**

**Outdoor unit
[Model Name]**

[Service Ref.]

PUZ-A12NKA7
PUZ-A18NKA7
PUZ-A24NHA7
PUZ-A30NHA7
PUZ-A36NKA7
PUZ-A42NKA7
PUZ-A12NKA7-BS
PUZ-A18NKA7-BS
PUZ-A24NHA7-BS
PUZ-A30NHA7-BS
PUZ-A36NKA7-BS
PUZ-A42NKA7-BS

PUZ-A12NKA7
PUZ-A18NKA7
PUZ-A24NHA7
PUZ-A30NHA7
PUZ-A36NKA7
PUZ-A42NKA7
PUZ-A12NKA7-BS
PUZ-A18NKA7-BS
PUZ-A24NHA7-BS
PUZ-A30NHA7-BS
PUZ-A36NKA7-BS
PUZ-A42NKA7-BS

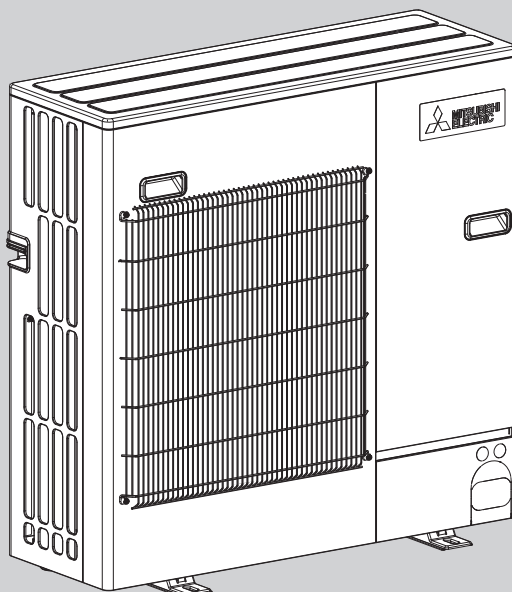
PUY-A12NKA7
PUY-A18NKA7
PUY-A24NHA7
PUY-A30NHA7
PUY-A36NKA7
PUY-A42NKA7
PUY-A12NKA7-BS
PUY-A18NKA7-BS
PUY-A24NHA7-BS
PUY-A30NHA7-BS
PUY-A36NKA7-BS
PUY-A42NKA7-BS

PUY-A12NKA7
PUY-A18NKA7
PUY-A24NHA7
PUY-A30NHA7
PUY-A36NKA7
PUY-A42NKA7
PUY-A12NKA7-BS
PUY-A18NKA7-BS
PUY-A24NHA7-BS
PUY-A30NHA7-BS
PUY-A36NKA7-BS
PUY-A42NKA7-BS

Revision:

- A note has been added on page 5 and 7 in REVISED EDITION-B.

OCB636A is void.



**PUZ-A24/30NHA7
PUY-A24/30NHA7**

CONTENTS

1. SERVICE PARTS LIST 2

SERVICE MANUAL (OCH636)

FUNCTIONAL PARTS

PUZ-A12NKA7

PUZ-A12NKA7-BS

PUZ-A18NKA7

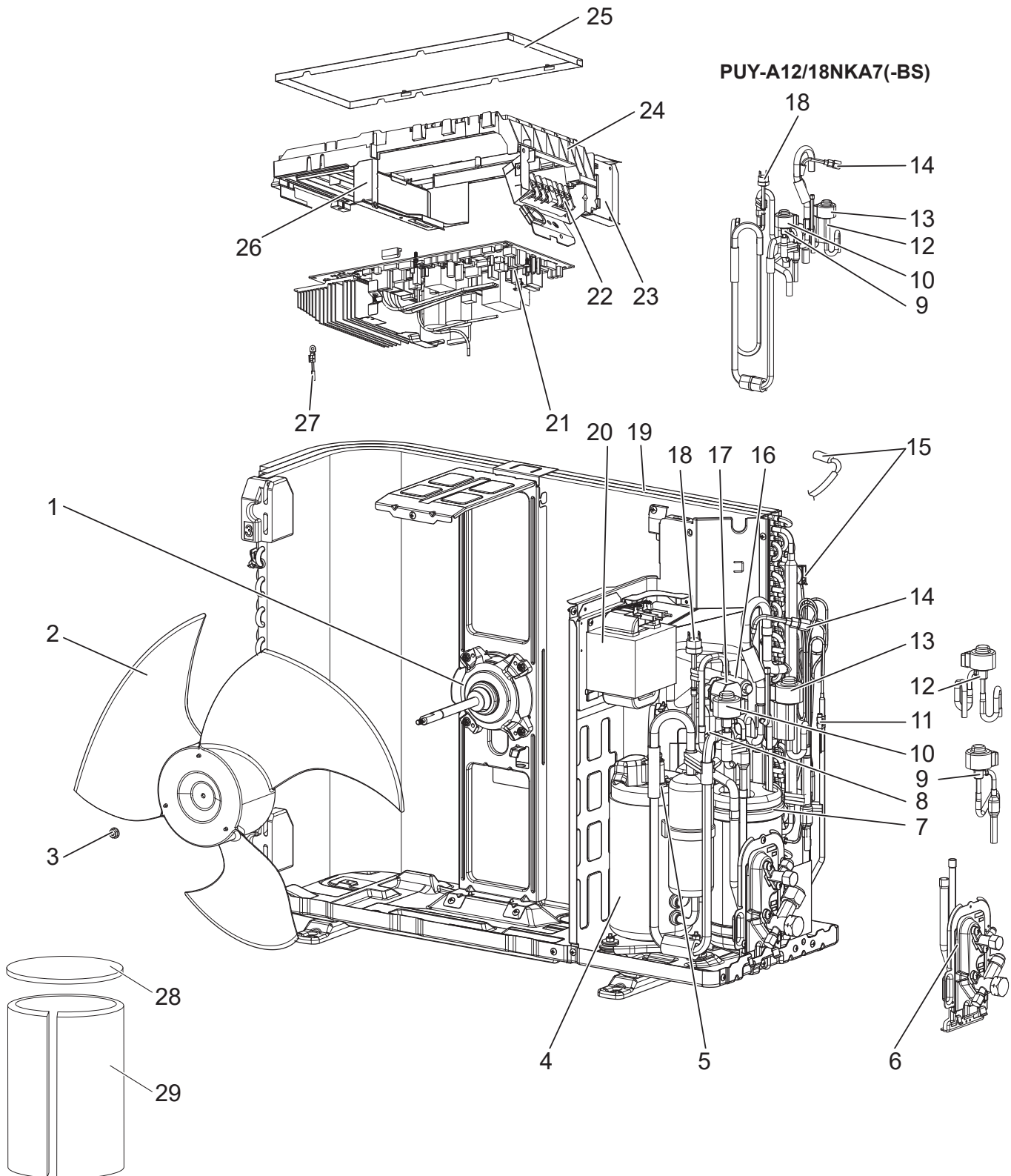
PUZ-A18NKA7-BS

PUY-A12NKA7

PUY-A12NKA7-BS

PUY-A18NKA7

PUY-A18NKA7-BS



1. The part quantity below indicates the required number of pieces per unit.
2. The circled No. indicates that the part is not shown in the figure.

No.	Parts No.	Parts Name	PUZ-A12NKA7	PUZ-A18NKA7	PUY-A12NKA7	PUY-A18NKA7	PUZ-A12NKA7-BS	PUZ-A18NKA7-BS	PUY-A12NKA7-BS	PUY-A18NKA7-BS	Wiring Diagram Symbol	Remarks
1	T7W A07 221	FAN MOTOR	1	1	1	1	1	1	1	1	MF1	
2	R01 E11 115	PROPELLER FAN	1	1	1	1	1	1	1	1		
3	R01 E03 097	NUT	1	1	1	1	1	1	1	1		
4	T97 427 607	COMPRESSOR	1		1		1		1		MC (SNB092FNCM)	Includes RUBBER MOUNTS
4	T97 428 607	COMPRESSOR		1		1		1		1	MC (SNB130FNCM2)	Includes RUBBER MOUNTS
5	R01 M09 202	THERMISTOR DS	1	1	1	1	1	1	1	1	TH4 (Discharge) TH33 (Comp. surface)	
6	T7W E08 410	STOP VALVE ASSY	1	1	1	1	1	1	1	1		1/4F, 1/2F Includes STOP VALVES
7	R01 E69 440	POWER RECEIVER	1	1	1	1	1	1	1	1		
8	R01 H14 202	THERMISTOR	1	1	1	1	1	1	1	1	TH32 (Suction)	
9	R01 H90 401	LEV-B ASSY	1	1	1	1	1	1	1	1		Includes LEV-B COIL
10	R01 H38 242	LEV COIL	1	1	1	1	1	1	1	1	LEV-B (RED)	CAM type
11	R01 N25 202	THERMISTOR	1	1	1	1	1	1	1	1	TH3 (Liquid)	
12	R01 H89 401	LEV-A ASSY	1	1	1	1	1	1	1	1		Includes LEV-A COIL
13	R01 H37 242	LEV COIL	1	1	1	1	1	1	1	1	LEV-A (WHITE)	CAM type
14	R01 E12 413	CHARGE PLUG	1	1	1	1	1	1	1	1		
15	R01 H83 202	THERMISTOR	1	1	1	1	1	1	1	1	TH6 (2-phase pipe) TH7 (Ambient)	
16	T7W E08 403	4-WAY VALVE	1	1			1	1				
17	T7W E97 242	SOLENOID COIL (4-WAY VALVE)	1	1			1	1			21S4	
18	T7W E15 208	HIGH PRESSURE SWITCH	1	1	1	1	1	1	1	1	63H	UL4.14MPA
19	R01 H55 408	HEAT EXCHANGER	1		1		1		1			
19	R01 H50 408	HEAT EXCHANGER		1		1		1		1		
20	T7W E28 259	REACTOR	1	1	1	1	1	1	1	1	ACL	
21	T7W H90 315	CONTROLLER CIRCUIT BOARD	1	1	1	1	1	1	1	1	C.B.	
22	T7W E70 716	TERMINAL BLOCK	1	1	1	1	1	1	1	1	TB1	6P (L1,L2,GR,S1,S2,S3)
23	R01 E00 316	SWITCH BOARD	1	1	1	1	1	1	1	1	S.B.	
24	R01 E00 327	P.B.SUPPORT	1	1	1	1	1	1	1	1		
25	R01 E00 325	P.B.COVER	1	1	1	1	1	1	1	1		
26	R01 E01 327	H.S.SUPPORT	1	1	1	1	1	1	1	1		
27	R01 M17 202	THERMISTOR (HS)	1	1	1	1	1	1	1	1	TH8 (Heat sink)	
28	R01 A53 602	COMP FELT (TOP)	1	1	1	1	1	1	1	1		
29	R01 A52 602	COMP FELT (BODY)	1	1	1	1	1	1	1	1		
30	R01 E21 239	FUSE 10A 250V	2	2	2	2	2	2	2	2	F1, F2	10A 250V
31	R01 E17 239	FUSE 250V 3.15A	2	2	2	2	2	2	2	2	F3, F4	250V 3.15A
32	T7W A12 510	LEAD ASSY COMP	1		1		1		1			
32	T7W A13 510	LEAD ASSY COMP		1		1		1		1		

FUNCTIONAL PARTS

PUZ-A24NHA7

PUZ-A30NHA7

PUY-A24NHA7

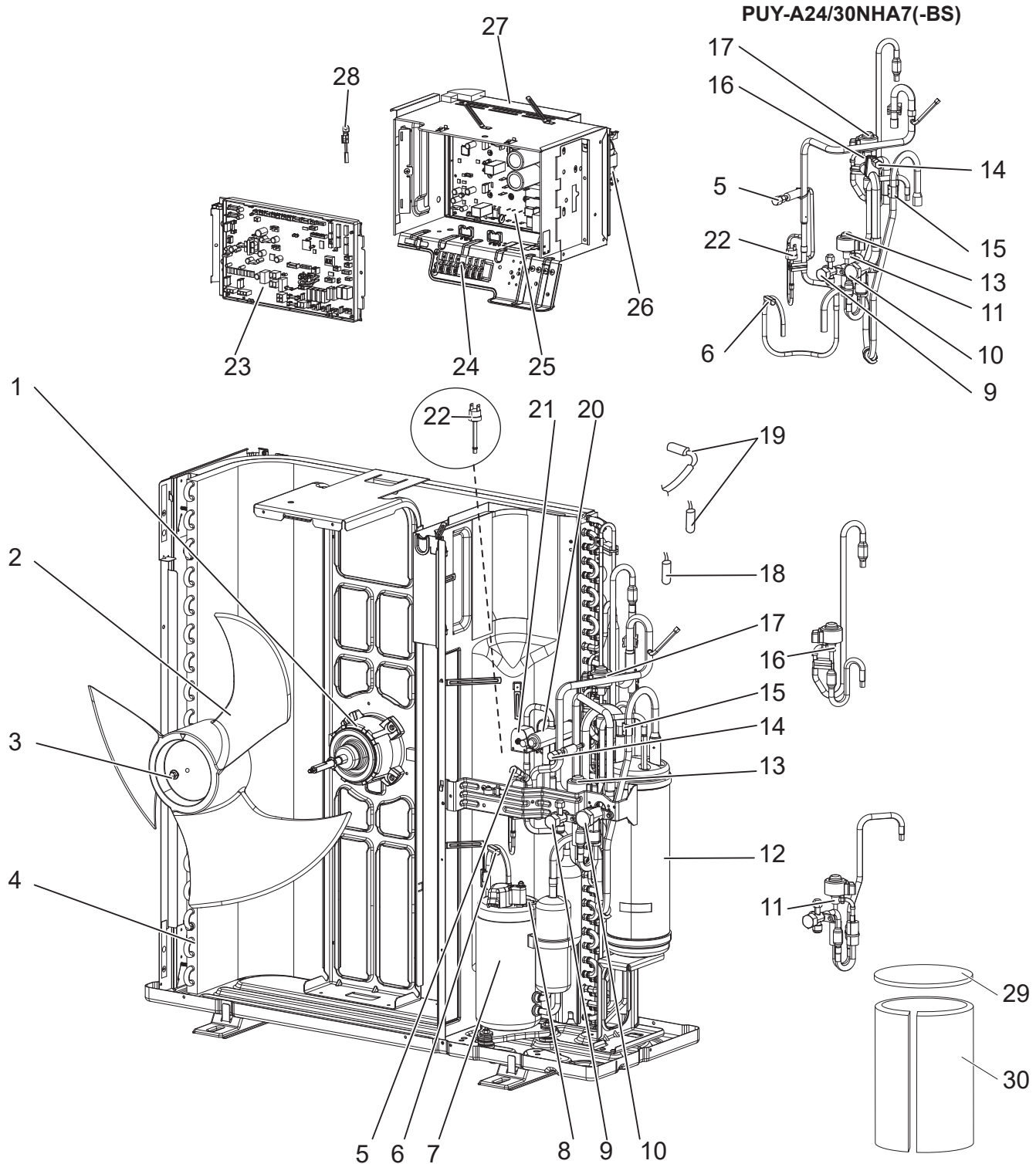
PUY-A30NHA7

PUZ-A24NHA7-BS

PUZ-A30NHA7-BS

PUY-A24NHA7-BS

PUY-A30NHA7-BS



1. The part quantity below indicates the required number of pieces per unit.
2. The circled No. indicates that the part is not shown in the figure.

No.	Parts No.	Parts Name	PUZ-A24NHA7	PUZ-A30NHA7	PUY-A24NHA7	PUY-A30NHA7	PUZ-A24NHA7-BS	PUZ-A30NHA7-BS	PUY-A24NHA7-BS	PUY-A30NHA7-BS	Wiring Diagram Symbol	Remarks
1	R01 E80 221	FAN MOTOR	1	1	1	1	1	1	1	1	MF1	
2	R01 E12 115	PROPELLER FAN	1	1	1	1	1	1	1	1		
3	R01 E09 097	NUT	1	1	1	1	1	1	1	1		
4	T7W E84 408	HEAT EXCHANGER	1	1	1	1	1	1	1	1		
5	T7W E14 413	CHARGE PLUG	1	1			1	1				
5	R01 E28 413	CHARGE PLUG			1	1			1	1		
6	R01 E37 201	THERMISTOR	1	1	1	1	1	1	1	1	TH4 (Discharge)	
7	T97 426 607	COMPRESSOR	1	1	1	1	1	1	1	1	MC (SNB172FWHM1)	* Includes RUBBER MOUNTS
8	R01 E45 201	THERMISTOR	1	1	1	1	1	1	1	1	TH33 (Comp. Surface)	
9	T7W E04 410	STOP VALVE	1	1	1	1	1	1	1	1		3/8
10	T7W E09 410	STOP VALVE	1	1	1	1	1	1	1	1		* 5/8
11	T7W E90 401	LEV-B ASSY	1	1	1	1	1	1	1	1		Includes LEV COIL and STOP VALVE
12	R01 E65 440	POWER RECEIVER	1	1	1	1	1	1	1	1		*
13	R01 H36 242	LEV COIL	1	1	1	1	1	1	1	1	LEV-B (RED)	CAM type
14	T7W E15 413	CHARGE PLUG	1	1			1	1				
14	T7W E10 413	CHARGE PLUG			1	1			1	1		*
15	R01 H17 202	THERMISTOR	1	1	1	1	1	1	1	1	TH32 (Suction)	*
16	T7W E89 401	LEV-A ASSY	1	1	1	1	1	1	1	1		Includes LEV COIL
17	R01 H46 242	LEV COIL	1	1	1	1	1	1	1	1	LEV-A (WHITE)	CAM type
18	R01 H87 202	THERMISTOR	1	1	1	1	1	1	1	1	TH3 (Liquid)	
19	R01 M18 202	THERMISTOR W	1	1	1	1	1	1	1	1	TH6 (2-phase pipe) TH7 (Ambient)	
20	T7W E07 403	4-WAY VALVE	1	1			1	1				
21	T7W E92 242	SOLENOID COIL <21S4>	1	1			1	1			21S4	
22	T7W E15 208	HIGH PRESSURE SWITCH	1	1	1	1	1	1	1	1	63H	UL4.14MPA
23	T7W HA0 315	CONTROLLER CIRCUIT BOARD	1	1	1	1	1	1	1	1	C.B.	
24	T7W E67 716	TERMINAL BLOCK	1	1	1	1	1	1	1	1	TB1	6P (L1,L2,GR,S1,S2,S3)
25	T7W B40 323	POWER CIRCUIT BOARD	1	1	1	1	1	1	1	1	P.B.	
26	T7W E27 259	REACTOR	1	1	1	1	1	1	1	1	DCL	
27	T7W A04 371	HEAT SINK	1	1	1	1	1	1	1	1		
28	R01 M15 202	THERMISTOR (HS)	1	1	1	1	1	1	1	1	TH8 (Heat sink)	
29	R01 A59 602	COMP FELT (TOP)	1	1	1	1	1	1	1	1		*
30	T7W A06 602	COMP FELT (BODY)	1	1	1	1	1	1	1	1		
31	R01 E21 239	FUSE 10A 250V	2	2	2	2	2	2	2	2	F1 ,2	10A 250V
32	R01 E14 239	FUSE 250V 6.3A	2	2	2	2	2	2	2	2	F3, 4	250V 6.3A
33	T7W A11 510	LEAD ASSY COMP	1	1	1	1	1	1	1	1		

* PUY-A24 only
If PIPE COVER KIT (PAC-SK58DK-E) is attached to the piping inside the outdoor unit, and it is removed for servicing, please order and install the same PIPE COVER KIT.

FUNCTIONAL PARTS

PUZ-A36NKA7

PUZ-A42NKA7

PUY-A36NKA7

PUY-A42NKA7

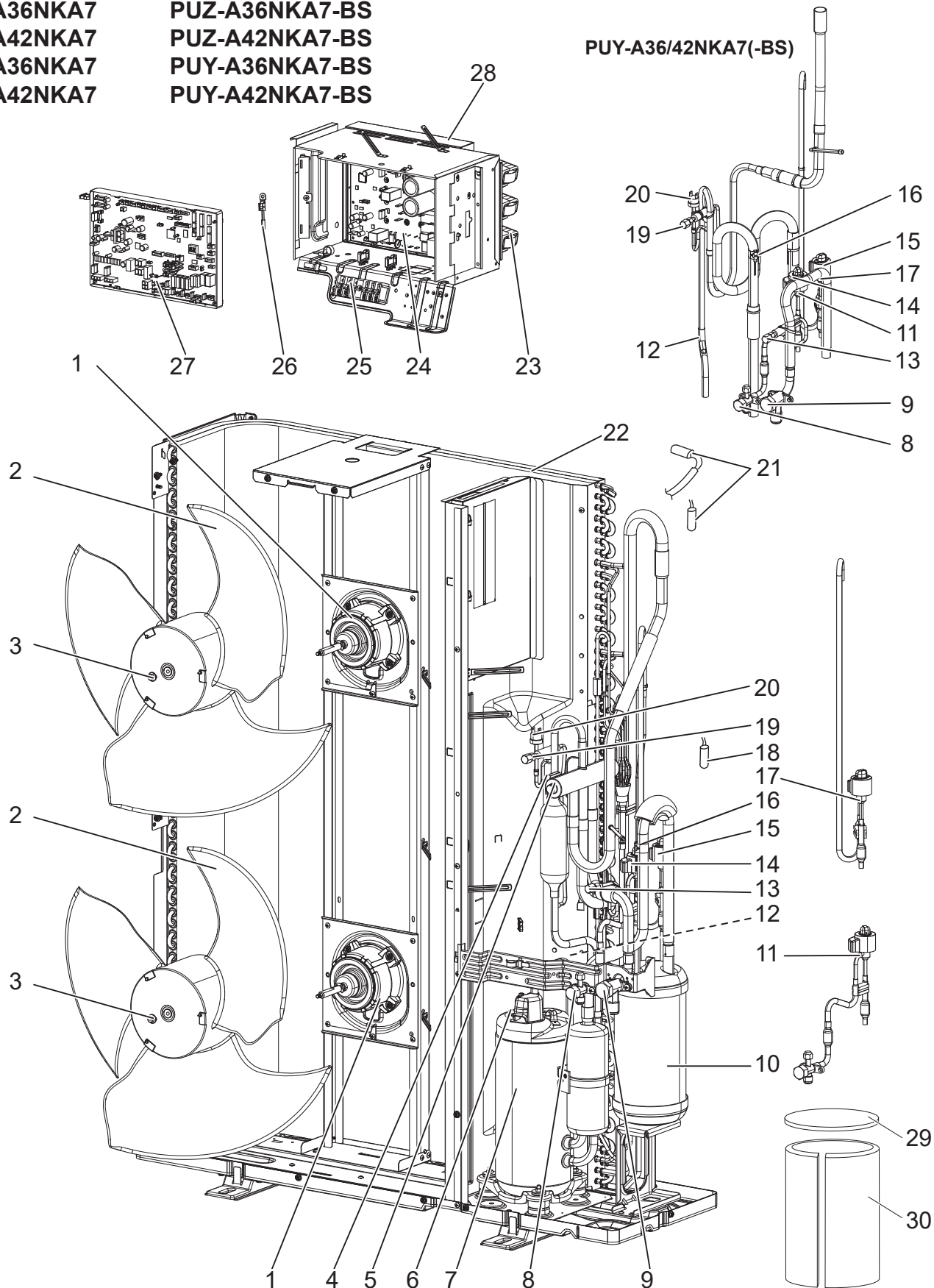
PUZ-A36NKA7-BS

PUZ-A42NKA7-BS

PUY-A36NKA7-BS

PUY-A42NKA7-BS

PUY-A36/42NKA7(-BS)

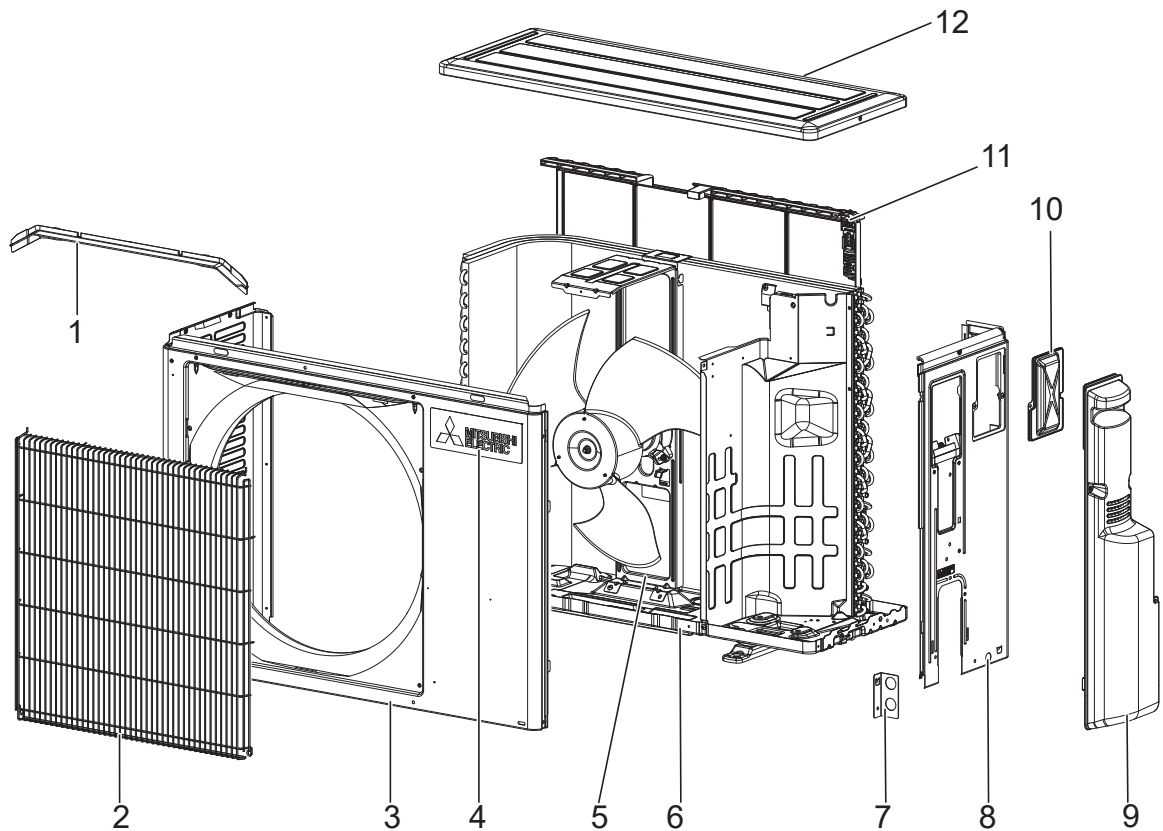


1. The part quantity below indicates the required number of pieces per unit.
2. The circled No. indicates that the part is not shown in the figure.

No.	Parts No.	Parts Name	PUZ-A36NKA7	PUZ-A42NKA7	PUY-A36NKA7	PUY-A42NKA7	PUZ-A36NKA7-BS	PUZ-A42NKA7-BS	PUY-A36NKA7-BS	PUY-A42NKA7-BS	Wiring Diagram Symbol	Remarks
1	T7W A05 221	FAN MOTOR	1	1	1	1	1	1	1	1	MF1	TOP
1	T7W A08 221	FAN MOTOR	1	1	1	1	1	1	1	1	MF2	BOTTOM
2	R01 E14 115	PROPELLER FAN	2	2	2	2	2	2	2	2		
3	R01 E09 097	NUT	2	2	2	2	2	2	2	2		
4	T7W E98 242	SOLENOID COIL <4-WAY VALVE>	1	1			1	1			21S4	
5	T7W E05 403	4-WAY VALVE	1	1			1	1				
6	R01 E39 201	THERMISTOR	1	1	1	1	1	1	1	1	TH33 (Comp. Surface)	
7	T97 427 677	COMPRESSOR	1	1	1	1	1	1	1	1	MC (MNB33FBRMC-L)	* Includes RUBBER MOUNTS
8	T7W E04 410	STOP VALVE	1	1	1	1	1	1	1	1		3/8
9	T7W E09 410	STOP VALVE	1	1	1	1	1	1	1	1		* 5/8
10	R01 E60 440	POWER RECEIVER	1	1	1	1	1	1	1	1		*
11	T7W E94 401	LEV-B ASSY	1	1	1	1	1	1	1	1		Includes LEV COIL and STOP VALVE
12	R01 E41 201	THERMISTOR	1	1	1	1	1	1	1	1	TH4 (Discharge)	
13	R01 E12 413	CHARGE PLUG	1	1			1	1				
13	R01 E28 413	CHARGE PLUG			1	1			1	1		*
14	R01 H34 242	LEV COIL	1	1	1	1	1	1	1	1	LEV-B (RED)	UKV type
15	R01 H33 242	LEV COIL	1	1	1	1	1	1	1	1	LEV-A (WHITE)	UKV type
16	R01 H32 202	THERMISTOR	1	1	1	1	1	1	1	1	TH32 (Suction)	*
17	R01 H74 401	LEV-A ASSY	1	1	1	1	1	1	1	1		Includes LEV COIL
18	R01 E67 202	THERMISTOR	1	1	1	1	1	1	1	1	TH3 (Liquid)	
19	R01 E28 413	CHARGE PLUG	1	1	1	1	1	1	1	1		
20	T7W E15 208	HIGH PRESSURE SWITCH	1	1	1	1	1	1	1	1	63H	UL4.14MPA
21	R01 M18 202	THERMISTOR	1	1	1	1	1	1	1	1	TH6 (2-phase pipe) TH7 (Ambient)	
22	R01 H52 408	HEAT EXCHANGER	1	1	1	1	1	1	1	1		
23	T7W E30 259	REACTOR	1	1	1	1	1	1	1	1	DCL1, DCL2, DCL3	3pc/set
24	T7W B50 323	POWER CIRCUIT BOARD	1	1	1	1	1	1	1	1	P.B.	
25	T7W E67 716	TERMINAL BLOCK	1	1	1	1	1	1	1	1	TB1	6P (L1,L2,GR, S1,S2,S3)
26	R01 M15 202	THERMISTOR (HS)	1	1	1	1	1	1	1	1	TH8 (Heat sink)	
27	T7W HB0 315	CONTROLLER CIRCUIT BOARD	1	1	1	1	1	1	1	1	C.B.	
28	T7W A04 371	HEAT SINK	1	1	1	1	1	1	1	1		
29	R01 A79 602	COMP FELT (TOP)	1	1	1	1	1	1	1	1		*
30	T7W A07 602	COMP FELT (BODY)	1	1	1	1	1	1	1	1		
31	T7W A09 510	LEAD ASSY COMP	1	1	1	1	1	1	1	1		
32	R01 E21 239	FUSE 10A 250V	2	2	2	2	2	2	2	2	F1, 2	10A 250V
33	R01 E14 239	FUSE 250V 6.3A	2	2	2	2	2	2	2	2	F3, 4	250V 6.3A

* PUY-A42 only
If PIPE COVER KIT (PAC-SK59DK-E) is attached to the piping inside the outdoor unit, and it is removed for servicing, please order and install the same PIPE COVER KIT.

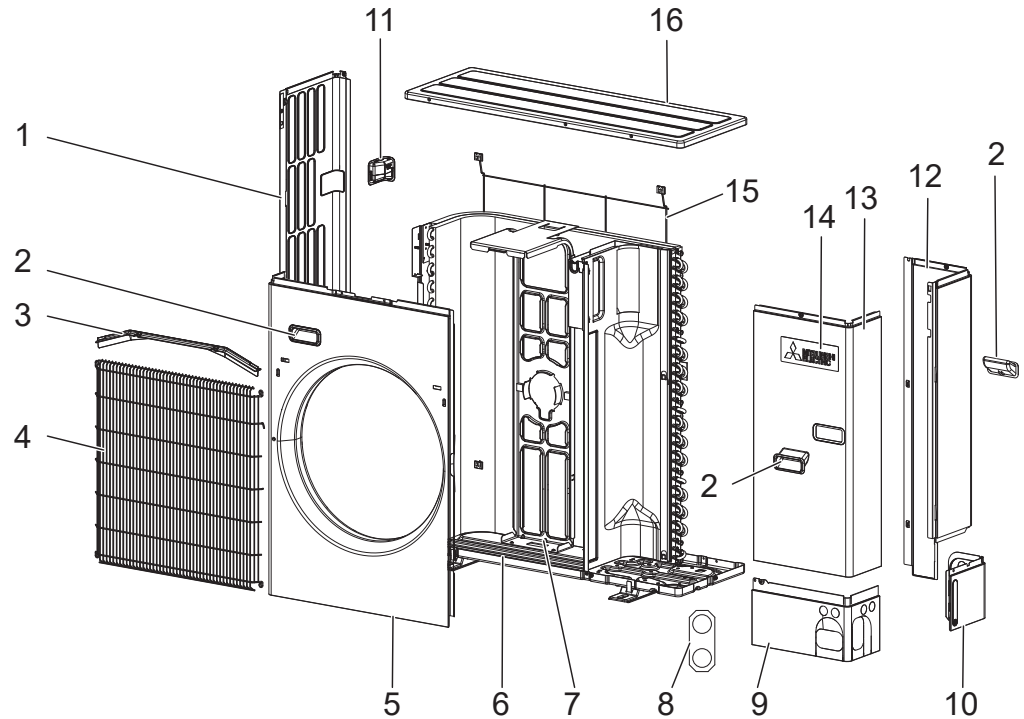
STRUCTURAL PARTS



1. The part quantity below indicates the required number of pieces per unit.
2. The circled No. indicates that the part is not shown in the figure.

No.	Parts No.	Parts Name	PUZ-A12NKA7	PUZ-A18NKA7	PUY-A12NKA7	PUY-A18NKA7	PUZ-A12NKA7-BS	PUZ-A18NKA7-BS	PUY-A12NKA7-BS	PUY-A18NKA7-BS	Remarks
1	R 01 E 00 631	ICE GUARD	1	1	1	1	1	1	1	1	
2	R 01 E 61 691	GRILLE	1	1	1	1	1	1	1	1	
3	R 01 E 21 668	FRONT PANEL	1	1	1	1	1	1	1	1	
4	T 7W A 00 005	BRAND LABEL	1	1	1	1	1	1	1	1	
5	R 01 E 45 130	MOTOR SUPPORT	1		1		1		1		
5	R 01 E 46 130	MOTOR SUPPORT		1		1		1		1	
6	R 01 E 43 686	BASE ASSY	1	1	1	1	1	1	1	1	
7	T 7W E 00 617	CONDUIT PLATE	1	1	1	1	1	1	1	1	
8	T 7W E 12 682	BACK PANEL	1	1	1	1	1	1	1	1	Includes No. 10
9	T 7W E 24 667	SERVICE PANEL	1	1	1	1	1	1	1	1	
10	R 01 E 03 633	SERVICE PLATE	1	1	1	1	1	1	1	1	
11	R 01 E 04 684	REAR GUARD	1		1		1		1		
11	R 01 E 05 684	REAR GUARD		1		1		1		1	
12	T 7W E 15 641	TOP PANEL	1	1	1	1	1	1	1	1	

STRUCTURAL PARTS



1. The part quantity below indicates the required number of pieces per unit.
2. The circled No. indicates that the part is not shown in the figure.

No.	Parts No.	Parts Name	PUZ-A24NHA7	PUZ-A30NHA7	PUY-A24NHA7	PUY-A30NHA7	PUZ-A24NHA7-BS	PUZ-A30NHA7-BS	PUY-A24NHA7-BS	PUY-A30NHA7-BS	Remarks
1	T 7 W E 1 2 6 6 2	SIDE PANEL (L)	1	1	1	1	1	1	1	1	
2	R 0 1 E 0 1 6 5 5	HANDLE	3	3	3	3	3	3	3	3	
3	R 0 1 E 0 1 6 3 1	ICE GUARD	1	1	1	1	1	1	1	1	
4	R 0 1 E 7 4 6 9 1	WIRE GRILLE	1	1	1	1	1	1	1	1	
5	R 0 1 E 2 2 6 6 8	FRONT PANEL	1	1	1	1	1	1	1	1	
6	R 0 1 E 5 6 6 8 6	BASE ASSY	1	1	1	1	1	1	1	1	
7	T 7 W E 2 0 1 3 0	MOTOR SUPPORT	1	1	1	1	1	1	1	1	
8	T 7 W E 0 1 6 1 7	CONDUIT PLATE	1	1	1	1	1	1	1	1	
9	R 0 1 E 4 0 6 5 8	COVER PANEL (FRONT)	1	1	1	1	1	1	1	1	
10	R 0 1 E 2 4 6 5 8	COVER PANEL (REAR)	1	1	1	1	1	1	1	1	
11	R 0 1 E 0 6 6 5 5	HANDLE (REAR)	1	1	1	1	1	1	1	1	
12	T 7 W E 4 1 6 6 1	SIDE PANEL (R)	1	1	1	1	1	1	1	1	
13	T 7 W E 1 0 6 6 7	SERVICE PANEL	1	1	1	1	1	1	1	1	
14	T 7 W A 0 0 0 0 5	BRAND LABEL	1	1	1	1	1	1	1	1	
15	T 7 W E 0 7 6 9 8	REAR GUARD	1	1	1	1	1	1	1	1	
16	T 7 W E 1 6 6 4 1	TOP PANEL	1	1	1	1	1	1	1	1	

STRUCTURAL PARTS

PUZ-A36NKA7

PUZ-A42NKA7

PUY-A36NKA7

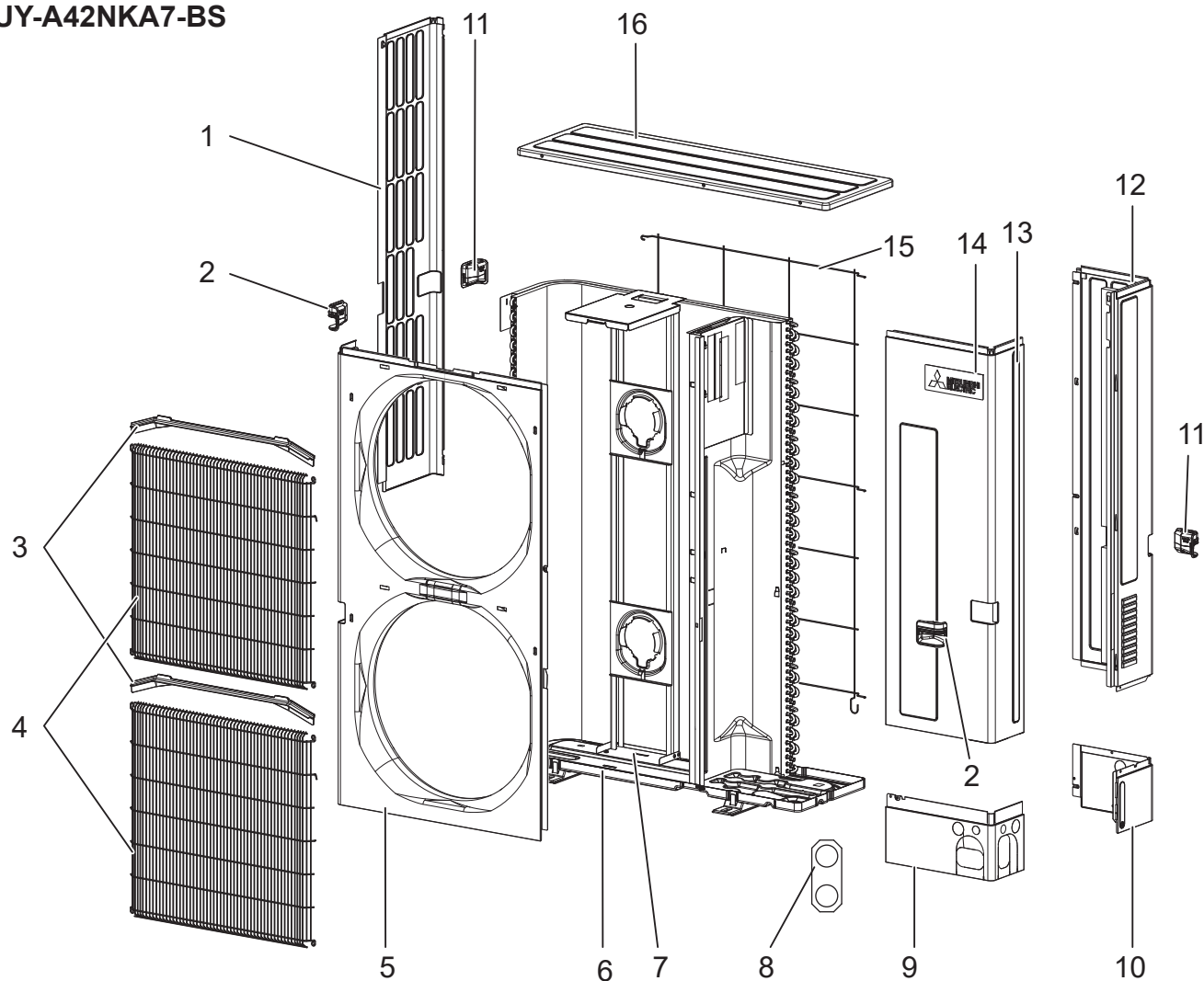
PUY-A42NKA7

PUZ-A36NKA7-BS

PUZ-A42NKA7-BS

PUY-A36NKA7-BS

PUY-A42NKA7-BS



1. The part quantity below indicates the required number of pieces per unit.
2. The circled No. indicates that the part is not shown in the figure.

No.	Parts No.	Parts Name	PUZ-A36NKA7	PUZ-A42NKA7	PUY-A36NKA7	PUY-A42NKA7	PUZ-A36NKA7-BS	PUZ-A42NKA7-BS	PUY-A36NKA7-BS	PUY-A42NKA7-BS	Remarks
1	R 0 1 E 3 0 6 6 2	SIDE PANEL (L)	1	1	1	1	1	1	1	1	
2	R 0 1 E 0 5 6 5 5	HANDLE (FRONT)	2	2	2	2	2	2	2	2	
3	R 0 1 E 0 2 6 3 1	ICE GUARD	2	2	2	2	2	2	2	2	
4	R 0 1 E 7 3 6 9 1	WIRE GRILLE	2	2	2	2	2	2	2	2	
5	R 0 1 E 2 3 6 6 8	FRONT PANEL	1	1	1	1	1	1	1	1	
6	T 7 W E 2 6 6 8 6	BASE ASSY	1	1	1	1	1	1	1	1	
7	R 0 1 E 5 9 1 3 0	MOTOR SUPPORT	1	1	1	1	1	1	1	1	
8	T 7 W E 0 4 6 1 7	CONDUIT PLATE	1	1	1	1	1	1	1	1	
9	R 0 1 E 3 5 6 5 8	COVER PANEL (FRONT)	1	1	1	1	1	1	1	1	
10	R 0 1 E 3 6 6 5 8	COVER PANEL (REAR)	1	1	1	1	1	1	1	1	
11	R 0 1 E 0 6 6 5 5	HANDLE (REAR)	2	2	2	2	2	2	2	2	
12	T 7 W E 3 7 6 6 1	SIDE PANEL (R)	1	1	1	1	1	1	1	1	
13	T 7 W E 2 1 6 6 7	SERVICE PANEL	1	1	1	1	1	1	1	1	
14	T 7 W A 0 0 0 0 5	BRAND LABEL	1	1	1	1	1	1	1	1	
15	R 0 1 E 1 0 6 9 8	REAR GUARD	1	1	1	1	1	1	1	1	
16	R 0 1 E 3 6 6 4 1	TOP PANEL	1	1	1	1	1	1	1	1	

mitsubishi electric corporation

HEAD OFFICE: TOKYO BUILDING, 2-7-3, MARUNOUCHI, CHIYODA-KU, TOKYO 100-8310, JAPAN

©Copyright 2016 MITSUBISHI ELECTRIC CORPORATION
Issued: Nov. 2021 No. OCB636 REVISED EDITION-B
Issued: Jul. 2018 No. OCB636 REVISED EDITION-A
Published: Oct. 2016 No. OCB636
Made in Japan

Specifications are subject to change without notice.