

PLA-A18EA7 & PUY-A18NKA7
18,000 BTU/H 3' X 3' CEILING CASSETTE
18,000 BTU/H COOLING ONLY OUTDOOR



Job Name:

System Reference:

Date:



Indoor Unit.....PLA-A18EA7

Outdoor Unit.....PUY-A18NKA7

INDOOR UNIT FEATURES

- Space-efficient ductless installation
- Equipped with 3D i-see Sensor® for enhanced comfort and energy efficiency
- Airflow settings for high and low ceiling applications
- Individual vane settings for direct/indirect airflow control or variable airflow patterns
- Knockouts for outside-air intake and branch-duct run
- Filter indicator signal
- Easy-to-clean, washable filter (optional high-efficiency filter available - requires multi-function casement)
- Built-in condensate lift mechanism
- Ideal for retail shops, classrooms, office spaces, conference centers, building lobbies, and more
- Multiple control options available:
 - kumo cloud® smart device app for remote access
 - Third-party interface options
 - Wired or wireless controllers

OUTDOOR UNIT FEATURES

- Variable speed INVERTER-driven compressor
- Pre-charged with refrigerant volume for piping length up to 70 ft
- Low ambient cooling down to -40°F providing 100% capacity (with wind baffles)
- 24-hour continuous operation (cooling mode)
- High pressure protection
- Fast restart
- Superior energy and operational efficiency
- Seacoast protection*
 - External Outer Panel: Phosphate coating + Acrylic-Enamel coating
 - Fan Motor Support: Epoxy resin coating (at edge face)
 - Separator Assembly Valve Bed: Epoxy resin coating (at edge face)
 - Blue Fin treatment is an anti-corrosion treatment that is applied to the Heat exchanger coil to protect it against airborne contaminants.
 - Heat exchanger coil and base panel rated for 2,000 hours in accordance with ASTM B117 testing

*Seacoast protection standard from 2022 production

SPECIFICATIONS: PLA-A18EA7 & PUY-A18NKA7

| | | | |
|--|--|---------------------|---|
| Cooling at 95°F ¹ | Maximum Capacity | BTU/H | 18,000 |
| | Rated Capacity | BTU/H | 18,000 |
| | Minimum Capacity | BTU/H | 8,000 |
| | Maximum Power Input | W | 1,250 |
| | Rated Power Input | W | 1,250 |
| | Moisture Removal | Pints/h | 2.4 |
| | Sensible Heat Factor | | 0.85 |
| | Power Factor [208V / 230V] | % | 95.3 / 95.3 |
| Efficiency | SEER SEER2 | | 24.6 25.0 |
| | EER ¹ EER2 ¹ | | 14.4 14.4 |
| | ENERGY STAR® Certified | | Yes |
| Electrical | Voltage, Phase, Frequency | | 208/230, 1, 60 |
| | Guaranteed Voltage Range | V AC | 198 - 253 |
| | Voltage: Indoor - Outdoor, S1-S2 | V AC | 208/230 |
| | Voltage: Indoor - Outdoor, S2-S3 | V DC | 24 |
| | Short-circuit Current Rating [SCCR] | kA | 5 |
| | Recommended Fuse/Breaker Size (Outdoor) | A | 15 |
| | Recommended Wire Size [Indoor - Outdoor] | AWG | 14 |
| | Power Supply | | Indoor unit is powered by the outdoor unit |
| Indoor Unit | MCA | A | 1.0 |
| | Fan Motor Full Load Amperage | A | 0.34 |
| | Fan Motor Type | | DC Motor |
| | Airflow Rate at Cooling, Dry | CFM | 460–490–570–600 |
| | Airflow Rate at Cooling, Wet | CFM | 380–420–530–560 |
| | Airflow Rate at Heating, Dry | CFM | 420–460–570–600 |
| | Sound Pressure Level [Cooling] | dB[A] | 28–29–31–32 |
| | Sound Pressure Level [Heating] | dB[A] | 28–29–31–32 |
| | Drain Pipe Size | In. [mm] | 1-1/4 [32] |
| | Condensate Lift Mechanism, Maximum Distance | In. [mm] | 33-7/16 [849] |
| | Coating on Heat Exchanger | | — |
| | External Finish Color | | White Munsell 6.4Y 8.9/0.4 |
| | Unit Dimensions | W x D x H: In. [mm] | 33-1/16 // 37-13/32 x 33-1/16 // 37-13/32 x 10-5/32 // 1-9/16 [840 // 950 x 840 // 950 x 258 // 40] |
| | Package Dimensions | W x D x H: In. [mm] | 35-9/16 // 39-6/16 x 34-5/16 // 38-3/16 x 15 // 4-12/16 [903 // 1,000 x 871 // 970 x 381 // 121] |
| Indoor Unit Operating Temperature Range | Unit Weight | Lbs. [kg] | 46 // 11 [21 // 5] |
| | Package Weight | Lbs. [kg] | 68 [31] |
| Cooling Intake Air Temp [Maximum / Minimum]* | °F | | 90 DB, 72 WB / 66 DB, 61 WB |
| Outdoor Unit | MCA | A | 11.0 |
| | MOCP | A | 28 |
| | Fan Motor Full Load Amperage | A | 0.5 |
| | Fan Motor Output | W | 46 |
| | Airflow Rate [Cooling / Heating] | CFM | 1590 |
| | Refrigerant Control | | LEV |
| | Defrost Method | | Reverse Cycle |
| | Coating on Heat Exchanger | | Blue Fin Coating*** |
| | Sound Pressure Level, Cooling ¹ | dB(A) | 44 |
| | Compressor Type | | INVERTER-driven twin rotary |
| | Compressor Model | | SNB130FQCMC-L1 |
| | Compressor Rated Load Amps | A | 7 |
| | Compressor Locked Rotor Amps | A | 12.0 |
| | Compressor Oil [Type // Charge] | oz. | FV50S // 16 |
| | External Finish Color | | Ivory Munsell 3Y 7.8/1.1 |
| | Base Pan Heater | | N/A |
| | Unit Dimensions | W x D x H: In. [mm] | 31-13/16 (2+7/16) x 11-13/16 x 24-13/16 [809 (+62) x 300 x 630] |
| | Package Dimensions | W x D x H: In. [mm] | 37-1/16 x 16-3/16 x 27-7/16 [941 x 411 x 697] |
| | Unit Weight | Lbs. [kg] | 99 [44] |
| | Package Weight | Lbs. [kg] | 111 [50] |
| Outdoor Unit Operating Temperature Range | Cooling Air Temp [Maximum / Minimum]* | °F | 115 DB / -40 DB |
| Refrigerant | Type | | R410A |
| | Pre-Charged Refrigerant Amount | Lbs, oz | 4.0, 14.0 |
| | Maximum Pre-Charged Piping Length | Ft. [m] | 70.0 [21.0] |
| | Additional Refrigerant Charge Per Additional Piping Length | oz./Ft. [g/m] | 0.1 [10] |

NOTES:

AHRI Rated Conditions

(Rated data is determined at a fixed compressor speed) ¹Cooling (Indoor // Outdoor) °F 80 DB, 67 WB // 95 DB, 75 WB

*Indoor/Outdoor Unit Operating Temperature Range (Cooling Air Temp [Maximum / Minimum]):

- Wind baffles required to operate below 23°F DB in cooling mode.
- Cooling-only system with advanced wind baffle: -40°F - 115°F.
- Refer to wind baffle documentation for further information.

**Outdoor Unit Operating Temperature Range (Cooling Thermal Lock-out / Re-start Temperatures; Heating Thermal Lock-out / Re-start Temperatures):

- System cuts out in heating mode to avoid thermistor error and automatically restarts at these temperatures.

***Blue Fin Coating Standard from 2022 production:

- PU(Y/Z)-A(12/18)NKA7 - Beginning with serial number 12U*****
- PU(Y/Z)-A(24/30/36/42)NKA7 - Beginning with serial number 12U*****

SPECIFICATIONS: PLA-A18EA7 & PUY-A18NKA7

| | | | |
|--------|--------------------------------|---------|------------|
| Piping | Gas Pipe Size O.D. [Flared] | In.[mm] | 1/2 [12.7] |
| | Liquid Pipe Size O.D. [Flared] | In.[mm] | 1/4 [6.35] |
| | Maximum Piping Length | Ft. [m] | 165 [50] |
| | Maximum Height Difference | Ft. [m] | 100 [30] |
| | Maximum Number of Bends | | 15 |

NOTES:

AHRI Rated Conditions

(Rated data is determined at a fixed compressor speed) ¹Cooling (Indoor // Outdoor) °F 80 DB, 67 WB // 95 DB, 75 WB

*Indoor/Outdoor Unit Operating Temperature Range (Cooling Air Temp [Maximum / Minimum]):

- Wind baffles required to operate below 23°F DB in cooling mode.
- Cooling-only system with advanced wind baffle: -40°F - 115°F.
- Refer to wind baffle documentation for further information.

**Outdoor Unit Operating Temperature Range (Cooling Thermal Lock-out / Re-start Temperatures; Heating Thermal Lock-out / Re-start Temperatures):

- System cuts out in heating mode to avoid thermistor error and automatically restarts at these temperatures.

***Blue Fin Coating Standard from 2022 production:

- PU(Y/Z)-A(12/18)NKA7 - Beginning with serial number 12U*****
- PU(Y/Z)-A(24/30/36/42)NKA7 - Beginning with serial number 12U*****

INDOOR UNIT ACCESSORIES: PLA-A18EA7

| | | |
|----------------------------|---|-------------------|
| Control Interface | 3-Pin Connector | PAC-715AD |
| | Airzone ZBS Wired Blueface Principal Controller White | AZZBSBLUEFACECB |
| | Airzone ZBS Wired Blueface Principal Controller White | AZZBSBLUEZEROCB |
| | Airzone ZBS Wired Lite Controller White | AZZBSLITECB |
| | Airzone ZBS Wireless Lite Controller White | AZZBSLITERB |
| | Airzone ZBS Wireless Think Controller White | AZZBSTHINKRB |
| | BACnet® and Modbus® Interface | PAC-UKPRC001-CN-1 |
| | CN24 Relay Kit | CN24RELAY-KIT-CM3 |
| | IT Extender | PAC-WHS01IE-E |
| | kumo station® for kumo cloud® | PAC-WHS01HC-E |
| | Remote Operation Adapter† | PAC-SF40RM-E |
| | Thermostat Interface | PAC-US444CN-1 |
| | Thermostat Interface | PAC-US445CN-1 |
| | USNAP Adapter | PAC-WHS01UP-E |
| Remote Sensor | Wireless Interface for kumo cloud® | PAC-USWHS002-WF-2 |
| | Flush Mount Remote Temperature Sensor | PAC-USSEN002-FM-1 |
| | Flush Mount Temperature Sensor | PAC-USSEN001-FM-1 |
| | Remote Temperature Sensor | PAC-SE41TS-E |
| Wired Remote Controller | Wireless temperature and humidity sensor for kumo cloud® | PAC-USWHS003-TH-1 |
| | Deluxe Wired MA Remote Controller† | PAR-40MAAU |
| | Simple Ductless Wired Remote Controller | PAC-SDW01RC-1 |
| | Simple MA Remote Controller† | PAC-YT53CRAU-J |
| Wireless Remote Controller | Touch MA Controller† | PAR-CT01MAU-SB |
| | kumo touch™ RedLINK™ Wireless Controller | MHK2 |
| | Lockdown bracket for remote controller | RCMKP1CB |
| | Wireless MA Receiver | PAR-FA32MA-W |
| | Wireless MA Remote Controller | PAR-FL32MA-E |
| | Wireless Remote Controller | PAR-SL101A-E |
| Casement | Wireless Signal Receiver Panel | PAR-SR4LU-E |
| | Multi-function Casement | PAC-SJ41TM-E |
| Condensate | Blue Diamond (Advanced) Mini Condensate Pump w/ Reservoir & Sensor (208/230V) [recommended] | X87-721 |
| | Blue Diamond (MicroBlue) Mini Condensate Pump (110/208/230V) up to 18,000 BTU/H | X86-003 |
| | Blue Diamond Sensor Extension Cable — 15 Ft. | C13-103 |
| | Refco Condensate Pump (100-240 VAC) up to 120,000 BTU/H | COMBI |
| Disconnect Switch | (30A/600V/UL) [fits 2" X 4" utility box] - Black | TAZ-MS303 |
| | (30A/600V/UL) [fits 2" X 4" utility box] - White | TAZ-MS303W |
| Filter | High Efficiency Filter Element** | PAC-SH59KF-E |
| i-see Sensor® Panel | Grille with 3D i-see Sensor® (required) | PLP-41EAEU |
| Lineset | 100' x 1/4" x 100' / 1/2" Lineset (Twin-Tube Insulation) | MLS141212T-100 |
| | 15' x 1/4" x 15' / 1/2" Lineset (Twin-Tube Insulation) | MLS141212T-15 |
| | 30' x 1/4" x 30' / 1/2" Lineset (Twin-Tube Insulation) | MLS141212T-30 |
| | 50' x 1/4" x 50' / 1/2" Lineset (Twin-Tube Insulation) | MLS141212T-50 |
| | 65' x 1/4" x 65' / 1/2" Lineset (Twin-Tube Insulation) | MLS141212T-65 |
| Shutter Plate | Shutter Plate | PAC-SJ37SP-E |
| Space Panel | Space Panel | PAC-SJ38AS-E |

NOTES:

†PAC-SF40RM-E (Unable to use with wireless remote controller)

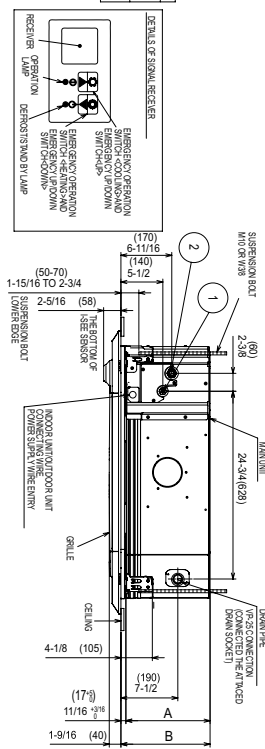
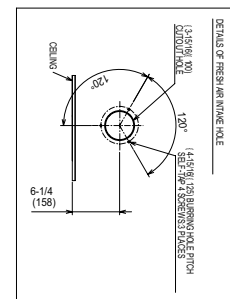
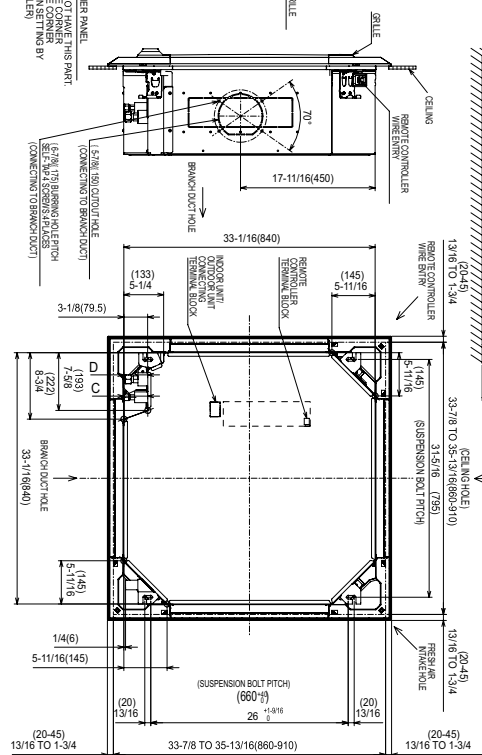
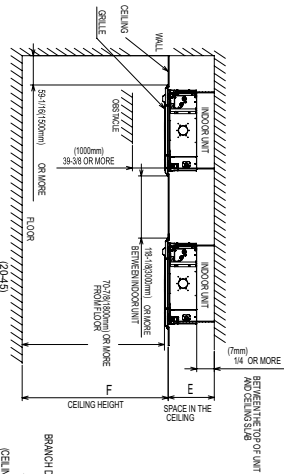
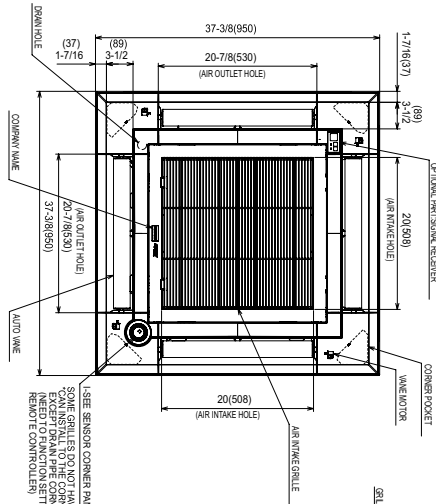
OUTDOOR UNIT ACCESSORIES: PUY-A18NKA7

| | | |
|-----------------------|--|--------------|
| Air Outlet Guide | Air Outlet Guide | PAC-SJ07SG-E |
| Centralized Drain Pan | Centralized Drain Pan | PAC-SG63DP-E |
| | Drain Pan | PAC-SG64DP-E |
| Control/Service Tool | Control/Service Tool | PAC-SK52ST |
| | M- & P-Series Maintenance Tool Cable Set | M21EC0397 |
| | USB/UART Conversion Cable (Required for all laptop connection) | M21EC1397 |
| Drain Socket | Drain Socket | MAC-871DS |
| Hail Guards | Hail Guard | HG-A5 |
| M-NET Converter | M-NET Converter | PAC-SJ96MA-E |
| Mini-Split Wire | 14 Gauge, 4 wire MiniSplit Cable—250 ft. roll | S144-250 |
| | 14 Gauge, 4 wire MiniSplit Cable—50 ft. roll | S144-50 |
| | 16 Gauge, 4 wire MiniSplit Cable—250 ft. roll | S164-250 |
| | 16 Gauge, 4 wire MiniSplit Cable—50 ft. roll | S164-50 |
| Mounting Pad | Condensing Unit Mounting Pad: 16" x 36" x 3" | ULTRILITE1 |
| Stand | 18" Single Fan Stand | QSMS1801M |
| | 24" Single Fan Stand | QSMS2401M |
| | Condenser Wall Bracket | QSWB2000M-1 |
| | Condenser Wall Bracket - Stainless Steel Finish | QSWBSS |
| | Outdoor Unit Stand — 12" High | QSMS1201M |
| Wind Baffle | Front Wind Baffle | WB-PA4 |
| | Rear Wind Baffle | WB-RE4 |
| | Side Advanced Wind Baffle | WB-SD4 |

INDOOR UNIT DIMENSIONS: PLA-A18EA7

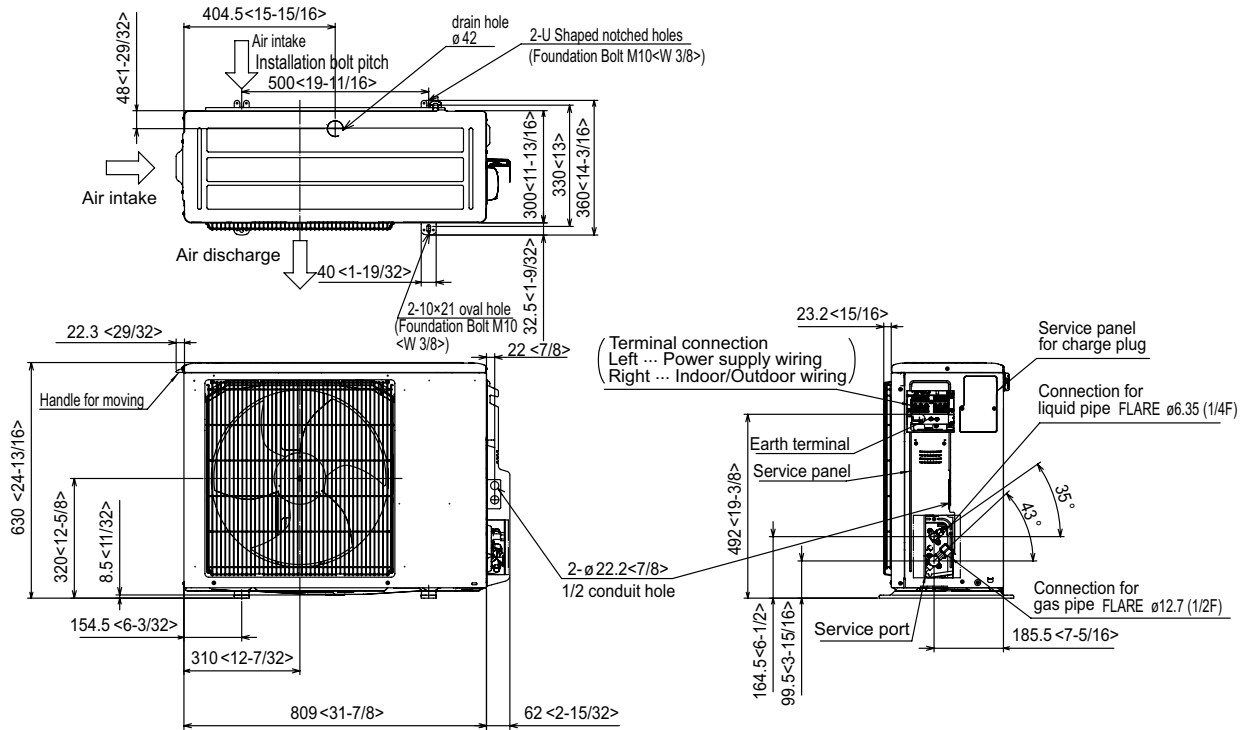
Unit: inch (mm)

| MODES | (1) | (2) | A | B | C | D | E | F |
|----------------|---|-----------------------|----------------|-----------------|--------------|-----------------|--------------------------|---------------------------|
| TOH KETUH | REFRIGERANT PIPES IS FLARED CONNECTION 1/4" | REFRIGERANT PIPE 1/2" | 9-12 (28) | 10-3/16 (28) | 3/16 (28) | 10-7/16 (28) | 10-1/2 (28)5 | 137-1/8 (5900) ON LESS |
| 24003042 KETUH | REFRIGERANT PIPES IS FLARED CONNECTION 1/4" | REFRIGERANT PIPE 1/2" | 11-1/4 (28) | 11-3/4 (28) | 3/16 (28) | 13-1/2 (28) | 171-3/4 (800) ON LESS | |

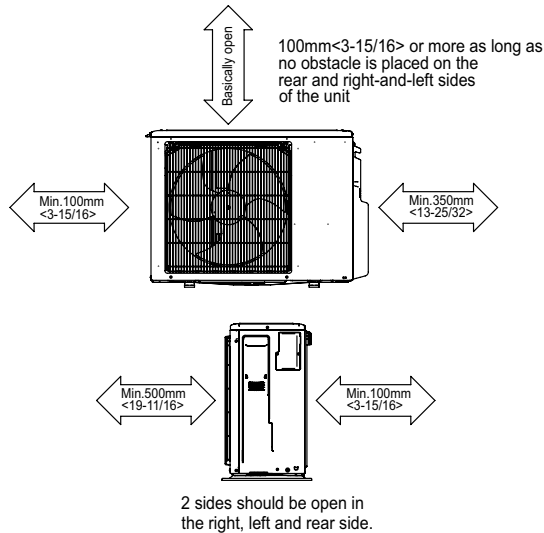


OUTDOOR UNIT DIMENSIONS: PUY-A18NKA7

Unit: mm<in>



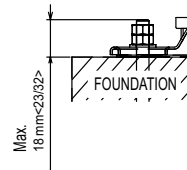
Free space around the outdoor unit (basic example)



FOUNDATION BOLTS

Please secure the unit firmly with 4 foundation (M10<W3/8>) bolts. (Bolts, washers and nut must be purchased locally).

<Foundation bolt height>



PIPING-WIRING DIRECTION

Piping and wiring connection can be made from the rear direction only.