



SPLIT-TYPE AIR CONDITIONERS

## INDOOR UNIT

No. OBB820

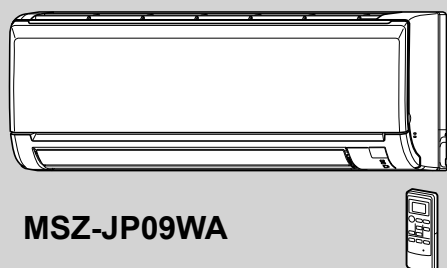
# PARTS CATALOG

---

### Models

**MSZ-JP09WA** - U1

**MSZ-JP12WA** - U1



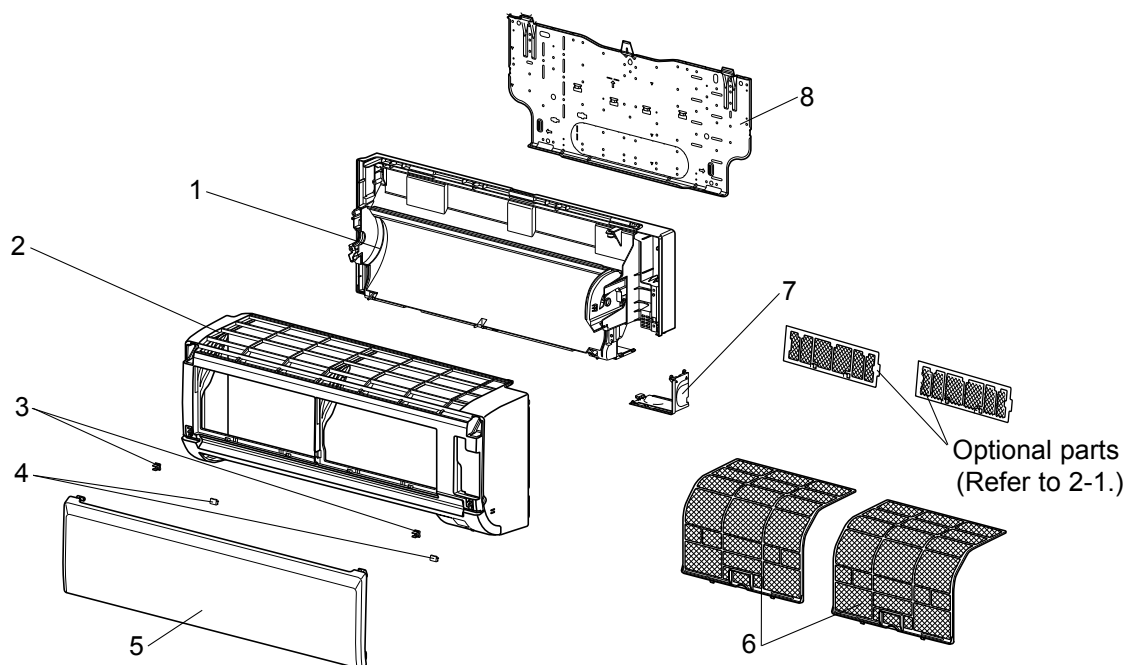
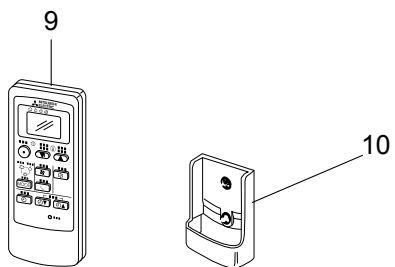
**MSZ-JP09WA**

---

### CONTENTS

- 1. SERVICE PARTS LIST .....2
- 2. OPTIONAL PARTS .....8

**SERVICE MANUAL (OBH820)**

**MSZ-JP09WA MSZ-JP12WA****1-1. INDOOR UNIT STRUCTURAL PARTS****1-2. ACCESSORY AND REMOTE CONTROLLER**

**MSZ-JP09WA MSZ-JP12WA****1-1. INDOOR UNIT STRUCTURAL PARTS**

| No. | Part No.    | Part name          | Symbol<br>in Wiring<br>Diagram | Q'ty/unit |      | Remarks             |
|-----|-------------|--------------------|--------------------------------|-----------|------|---------------------|
|     |             |                    |                                | MSZ-JP    |      |                     |
|     |             |                    |                                | 09WA      | 12WA |                     |
| 1   | U01 A01 234 | BOX ASSEMBLY       |                                | 1         | 1    |                     |
| 2   | U01 A03 000 | PANEL ASSEMBLY     |                                | 1         | 1    | Including No. 3,4,5 |
| 3   | U01 A01 142 | CATCH              |                                | 2         | 2    | 2 PCS/SET           |
| 4   | U01 A01 067 | SCREW CAP          |                                | 2         | 2    | 2 PCS/SET           |
| 5   | U01 A03 010 | FRONT PANEL        |                                | 1         | 1    |                     |
| 6   | U01 A02 100 | ANTI MOLD FILTER   |                                | 2         | 2    | 1 PC/SET            |
| 7   | U01 A01 975 | CORNER BOX RIGHT   |                                | 1         | 1    |                     |
| 8   | U01 A01 970 | INSTALLATION PLATE |                                | 1         | 1    |                     |

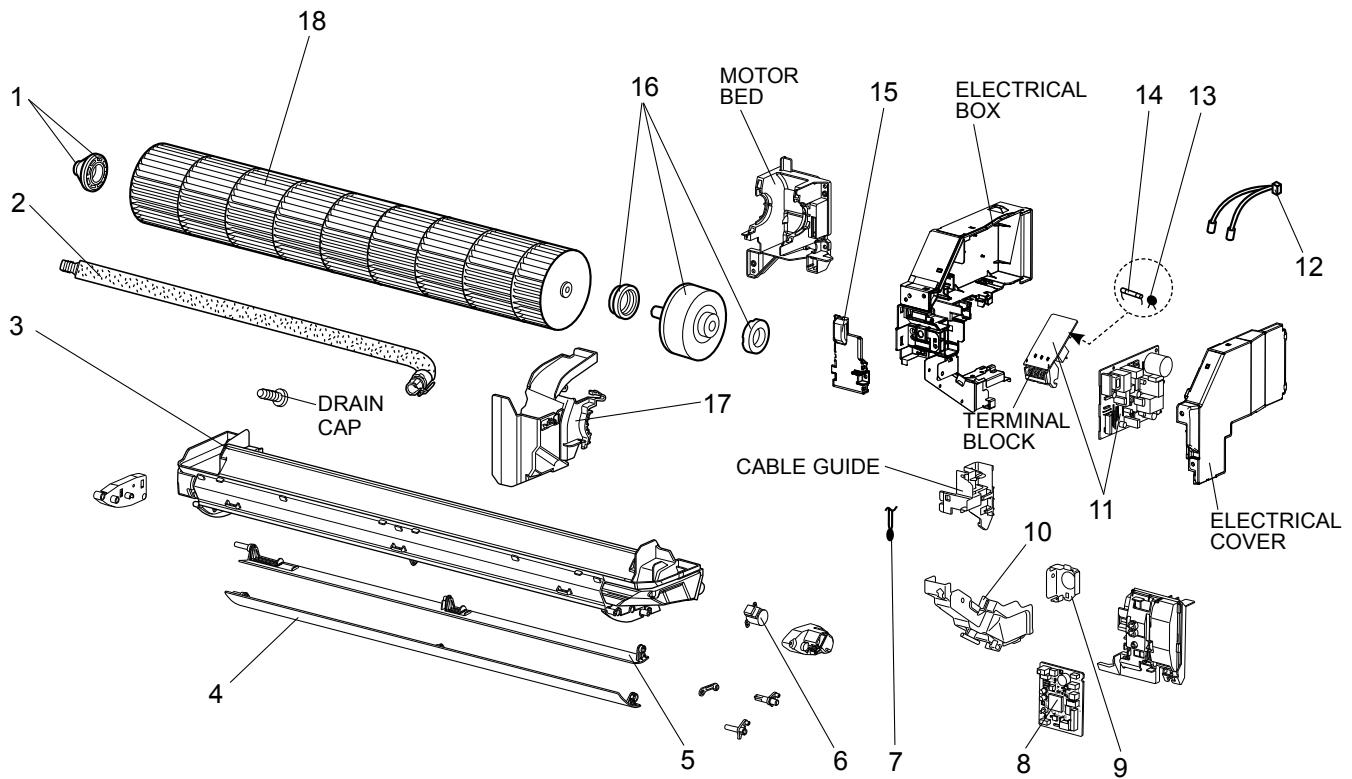
**1-2. ACCESSORY AND REMOTE CONTROLLER**

| No. | Part No.    | Part name                | Symbol<br>in Wiring<br>Diagram | Q'ty/unit |      | Remarks |
|-----|-------------|--------------------------|--------------------------------|-----------|------|---------|
|     |             |                          |                                | MSZ-JP    |      |         |
|     |             |                          |                                | 09WA      | 12WA |         |
| 9   | U01 A05 426 | REMOTE CONTROLLER        |                                | 1         | 1    | MS16A   |
| 10  | U01 A01 083 | REMOTE CONTROLLER HOLDER |                                | 1         | 1    |         |

# SERVICE PARTS LIST

MSZ-JP09WA MSZ-JP12WA

## 1-3. INDOOR UNIT ELECTRICAL PARTS AND FUNCTIONAL PARTS



## MSZ-JP09WA MSZ-JP12WA

### 1-3. INDOOR UNIT ELECTRICAL PARTS AND FUNCTIONAL PARTS

| No. | Part No.    | Part name                        | Symbol<br>in Wiring<br>Diagram | Q'ty/unit |      | Remarks                  |
|-----|-------------|----------------------------------|--------------------------------|-----------|------|--------------------------|
|     |             |                                  |                                | MSZ-JP    |      |                          |
|     |             |                                  |                                | 09WA      | 12WA |                          |
| 1   | U01 A02 510 | BEARING MOUNT ASSEMBLY           |                                | 1         | 1    | Including sleeve bearing |
| 2   | U01 A01 702 | DRAIN HOSE                       |                                | 1         | 1    |                          |
| 3   | U01 A01 235 | NOZZLE ASSEMBLY                  |                                | 1         | 1    |                          |
| 4   | U01 A01 040 | VANE-UPPER                       |                                | 1         | 1    |                          |
| 5   | U01 A01 041 | VANE-LOWER                       |                                | 1         | 1    |                          |
| 6   | U01 A01 303 | VANE MOTOR                       | MV                             | 1         | 1    | UP & DOWN                |
| 7   | U01 A01 308 | ROOM TEMPERATURE<br>THERMISTOR   | RT11                           | 1         | 1    |                          |
| 8   | U01 A35 452 | ELECTRONIC CONTROL P.C.<br>BOARD |                                | 1         |      |                          |
|     | U01 A36 452 |                                  |                                | 1         |      |                          |
| 9   | U01 A01 978 | CONDUIT PLATE                    |                                | 1         | 1    |                          |
| 10  | U01 A01 979 | CONDUIT COVER                    |                                | 1         | 1    |                          |
| 11  | U01 A02 440 | POWER P.C. BOARD ※1              |                                | 1         | 1    |                          |
| 12  | U01 A01 307 | INDOOR COIL THERMISTOR           | RT12,<br>RT13                  | 1         | 1    |                          |
| 13  | U01 A02 385 | VARISTOR                         | NR11                           | 1         | 1    |                          |
| 14  | U01 A01 382 | FUSE                             | F11                            | 1         | 1    | T3.15AL250V              |
| 15  | U01 A01 784 | V.A. CLAMP                       |                                | 1         | 1    |                          |
| 16  | U01 A02 300 | INDOOR FAN MOTOR ※2              | MF                             | 1         | 1    | RC0J30-□□                |
| 17  | U01 A01 333 | MOTOR BAND                       |                                | 1         | 1    |                          |
| 18  | U01 A01 302 | LINE FLOW FAN                    |                                | 1         | 1    |                          |

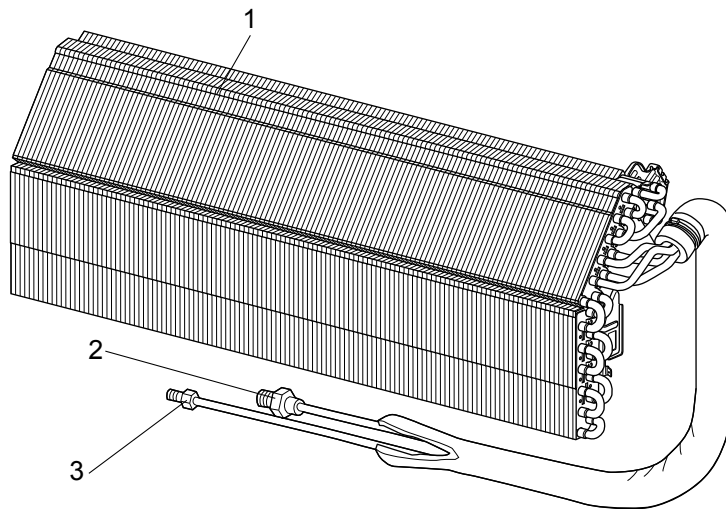
※1 Including TERMINAL BLOCK with TERMINAL P.C. BOARD

※2 Including FAN MOTOR RUBBER MOUNT (2 PCS/SET)

## SERVICE PARTS LIST

MSZ-JP09WA MSZ-JP12WA

### 1-4. INDOOR UNIT HEAT EXCHANGER





**MSZ-JP09WA MSZ-JP12WA**  
**1-4. INDOOR UNIT HEAT EXCHANGER**

| No. | Part No.    | Part name             | Symbol<br>in Wiring<br>Diagram | Q'ty/unit |      | Remarks      |
|-----|-------------|-----------------------|--------------------------------|-----------|------|--------------|
|     |             |                       |                                | MSZ-JP    |      |              |
|     |             |                       |                                | 09WA      | 12WA |              |
| 1   | U01 A03 620 | INDOOR HEAT EXCHANGER |                                | 1         | 1    |              |
| 2   | U01 A01 666 | UNION GAS             |                                | 1         | 1    | ø3/8 (ø9.52) |
| 3   | U01 A01 667 | UNION LIQUID          |                                | 1         | 1    | ø1/4 (ø6.35) |

## 2-1. AIR CLEANING FILTER

### Every 3 months:

- Remove dirt by a vacuum cleaner.

### When dirt cannot be removed by vacuum cleaning:

- Soak the filter and its frame in lukewarm water before rinsing it.
- After washing, dry it well in shade.

### Every year:

- Replace it with a new air cleaning filter for best performance.

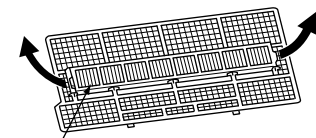
**NOTE 1:** Clean the filters regularly for best performance and to reduce power consumption.

**NOTE 2:** Dirty filters cause condensation in the air conditioner which will contribute to the growth of fungi such as mold. It is therefore recommended to clean air filters every 2 weeks.

### (ANTI-ALLERGY ENZYME FILTER)

| Model                    | Part No.    |
|--------------------------|-------------|
| MSZ-JP09WA<br>MSZ-JP12WA | MAC-408FT-E |

Pull to remove from the air filter



Air cleaning filter  
(Blue bellows type)

# MITSUBISHI ELECTRIC CORPORATION

HEAD OFFICE: TOKYO BUILDING, 2-7-3, MARUNOUCHI, CHIYODA-KU, TOKYO 100-8310, JAPAN

© Copyright 2018 MITSUBISHI ELECTRIC CORPORATION

Published: Nov. 2018. No. OBB820

Made in Japan

Specifications are subject to change without notice.