

# PARTS CATALOG

**R410A**

Outdoor unit  
[Model Name]

[Service Ref.]

SUZ-KA09NA2  
SUZ-KA09NAH2

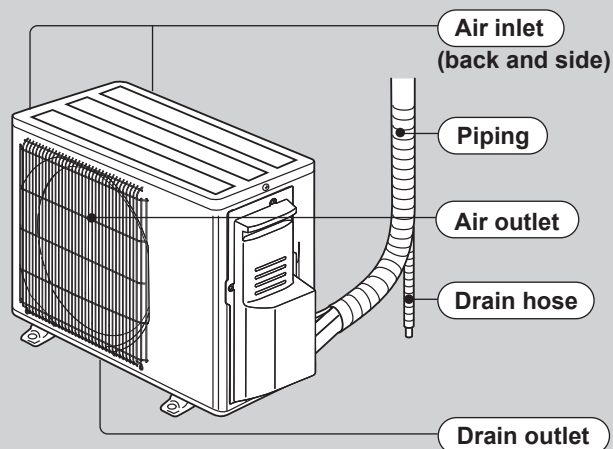
**SUZ-KA09NA2.MX**  
**SUZ-KA09NAH2.MX**

SUZ-KA12NA2  
SUZ-KA12NAH2

**SUZ-KA12NA2.MX**  
**SUZ-KA12NAH2.MX**

SUZ-KA15NA2  
SUZ-KA15NAH2

**SUZ-KA15NA2.MX**  
**SUZ-KA15NAH2.MX**



**SUZ-KA09NA(H)2.MX**

## CONTENTS

1. SERVICE PARTS LIST..... 2
2. OPTIONAL PARTS..... 4

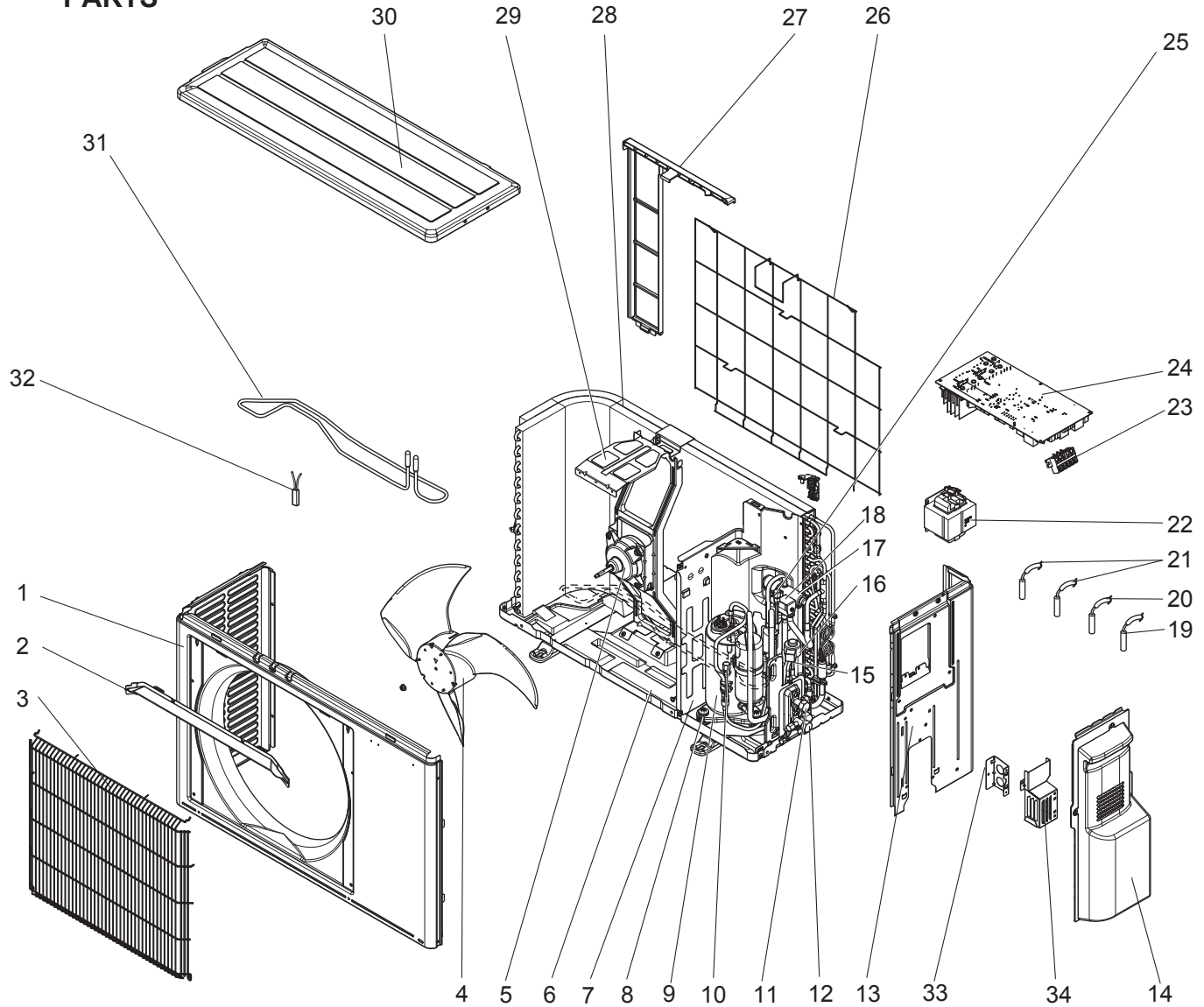
**SERVICE MANUAL (OCH699)**

# 1

## SERVICE PARTS LIST

SUZ-KA09NA2.MX SUZ-KA09NAH2.MX  
 SUZ-KA12NA2.MX SUZ-KA12NAH2.MX  
 SUZ-KA15NA2.MX SUZ-KA15NAH2.MX

### 1-1. OUTDOOR UNIT STRUCTURAL PARTS, ELECTRICAL PARTS AND FUNCTIONAL PARTS



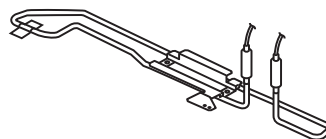
## 1-1. OUTDOOR UNIT STRUCTURAL PARTS, ELECTRICAL PARTS AND FUNCTIONAL PARTS

Part number that is circled is not shown in the illustration.

No.	Part No.	Part Name	Symbol in Wiring Diagram	Q'ty/unit SUZ-KA						Remarks
				09 NA2	09 NAH2	12 NA2	12 NAH2	15 NA2	15 NAH2	
1	U01 A04 232	CABINET		1	1	1	1	1	1	
2	U01 A01 531	ICE GUARD		1	1	1	1	1	1	
3	U01 A02 521	GRILLE (OUT)		1	1	1	1	1	1	
4	U01 A01 501	PROPELLER FAN		1	1	1	1	1	1	
	U01 A01 508	PROPELLER FAN NUT		1	1	1	1	1	1	
5	U01 A01 301	OUTDOOR FAN MOTOR	MF	1	1	1	1	1	1	
6	U01 A02 290	BASE		1		1		1		
	U01 A01 290				1		1		1	
7	U01 A02 293	SEPARATOR		1		1		1		
	U01 A01 293				1		1		1	
8	U01 A01 506	COMPRESSOR RUBBER MOUNT		3	3	3	3	3	3	
	U01 A03 900	COMPRESSOR (KNB073FRVMC)	MC	1	1					KNB073FRVMC
9	U01 A01 900	COMPRESSOR (SNB092FQAMT)				1	1			SNB092FQAMT
	U01 A04 900	COMPRESSOR (SNB130FQBMT)						1	1	SNB130FQBMT
10	U01 A02 641	SERVICE PORT		1	1	1	1	1	1	Discharge line
11	U01 A01 410	STOP VALVE ASSY		1	1					Including STOP VALVES(LIQ, GAS)
12	U01 A02 410					1	1			Including STOP VALVES(LIQ, GAS)
	U01 A03 410							1	1	Including STOP VALVES(LIQ, GAS)
13	U01 A01 233	BACK PANEL (OUT)		1	1	1	1	1	1	
14	U01 A01 245	SERVICE PANEL		1	1	1	1	1	1	
15	U01 A01 401	EXPANSION VALVE ASSY		1	1					
	U01 A02 401	EXPANSION VALVE ASSY				1	1	1	1	
16	U01 A01 493	EXPANSION VALVE COIL	LEV	1	1	1	1	1	1	
17	U01 A02 961	4-WAY VALVE		1	1					
	U01 A01 961					1	1	1	1	
18	U01 A01 490	SOLENOID COIL	21S4	1	1	1	1	1	1	
19	U01 A04 308	THERMISTOR	RT65	1	1	1	1	1	1	
20	U01 A02 307	THERMISTOR	RT68	1	1	1	1	1	1	
21	U01 A01 306	THERMISTOR	RT61, RT62	1	1	1	1	1	1	
22	U01 A02 337	REACTOR	L61	1	1					
	U01 A01 337		L61			1	1	1	1	
23	U01 A01 374	TERMINAL BLOCK	TB	1	1	1	1	1	1	5 P
24	U01 A29 451	INVERTER P.C. BOARD		1	1					Including heat sink and RT64
	U01 A30 451					1	1			
	U01 A31 451							1	1	
25	U01 A01 641	SERVICE PORT		1	1	1	1	1	1	Suction line
26	U01 A01 525	CONDENSER WIRE NET		1	1	1	1	1	1	
27	U01 A01 523	CONDENSER NET		1	1	1	1	1	1	
28	U01 A05 630	OUTDOOR HEAT EXCHANGER		1	1	1	1	1	1	
29	U01 A01 515	MOTOR SUPPORT		1	1	1	1	1	1	
30	U01 A01 297	TOP PANEL		1	1	1	1	1	1	
31	U01 A01 526	DEFROST HEATER	H		1		1		1	Including lead assembly
32	U01 A01 381	HEATER PROTECTOR	26H		1		1		1	
33	U01 A02 978	CONDUIT PLATE		1	1	1	1	1	1	
34	U01 A02 979	CONDUIT COVER		1	1	1	1	1	1	
35	U01 A03 515	PB SUPPORT		1	1	1	1	1	1	
36	U01 A01 811	PB COVER		1	1	1	1	1	1	
37	U01 A01 602	COMP FELT (TOP)		1	1	1	1	1	1	
38	U01 A02 602	COMP FELT (BODY)		1	1	1	1	1	1	
39	U01 A03 602	COMP FELT (OUTER)		1	1	1	1	1	1	
40	U01 A01 397	LEAD ASSY COMP		1	1					
	U01 A02 397					1	1	1	1	
41	U01 M01 987	BRAND LABEL		1	1	1	1	1	1	

## 2-1. DEFROST HEATER

Model	Parts No.
SUZ-KA09NA2 SUZ-KA12NA2 SUZ-KA15NA2	MAC-640BH-U



## Components

①	Defrost heater	1	④	Cable tie	1
②	Aluminum tape	1	⑤	Self drilling screw	2
③	Heater support	1	⑥	Insulation	1

# MITSUBISHI ELECTRIC CORPORATION

HEAD OFFICE: TOKYO BUILDING., 2-7-3, MARUNOUCHI, CHIYODA-KU, TOKYO100-8310, JAPAN