

MFZ-KJ09NA & MUFZ-KJ09NAHZ
9,000 BTU/H FLOOR-MOUNTED INDOOR UNIT
9,000 BTU/H HYPER-HEATING OUTDOOR UNIT



Job Name:

System Reference:

Date:



Indoor Unit.....MFZ-KJ09NA

Outdoor Unit.....MUFZ-KJ09NAHZ

INDOOR UNIT FEATURES

- Floor-mounted indoor unit mounts on the floor or up to 5" above the floor
- Floor front panel access to the filter for ease of cleaning
- Perfect for difficult areas that may be smaller or don't have usable space on the walls
- Multiple fan speed options: Low, Medium, High, Powerful, Auto
- Quiet operation
- Multi-flow vane for faster heating
- Multiple control options available:
 - Hand-held Remote Controller (provided with unit)
 - kumo cloud® smart device app for remote access
 - Third-party interface options
 - Wired or wireless controllers
- Unit can be recessed mounted into wall

OUTDOOR UNIT FEATURES

- Built-in base pan heater

SPECIFICATIONS: MFZ-KJ09NA & MUFZ-KJ09NAHZ

| | | | |
|---|--|---------------------|---|
| Cooling at 95°F ¹ | Maximum Capacity | BTU/H | 14,000 |
| | Rated Capacity | BTU/H | 9,000 |
| | Minimum Capacity | BTU/H | 2,300 |
| | Maximum Power Input | W | 1,250 |
| | Rated Power Input | W | 570 |
| | Moisture Removal | Pints/h | 1.4 |
| | Sensible Heat Factor | | 0.79 |
| Heating at 47°F ² | Power Factor [208V / 230V] | % | 86.0 / 86.0 |
| | Maximum Capacity | BTU/H | 19,000 |
| | Rated Capacity | BTU/H | 11,000 |
| | Minimum Capacity | BTU/H | 2,900 |
| | Maximum Power Input | W | 2,370 |
| | Rated Power Input | W | 750 |
| Heating at 17°F ³ | Power Factor [208V / 230V] | % | 94.0 / 94.0 |
| | Maximum Capacity | BTU/H | 13,400 |
| | Rated Capacity | BTU/H | 7,500 |
| | Maximum Power Input | W | 1,860 |
| Heating at 5°F ⁴ | Rated Power Input | W | 810 |
| | Maximum Capacity | BTU/H | 11,000 |
| Heating at 5°F ⁴ | Maximum Power Input | W | 1,600 |
| Heating at -4°F ⁵ | Maximum Capacity | BTU/H | 9,130 |
| Heating at -13°F ⁷ | Maximum Capacity | BTU/H | 7,260 |
| Efficiency | SEER SEER2 | | 28.2 28.7 |
| | EER ¹ EER2 ¹ | | 15.8 15.8 |
| | HSPF [IV] HSPF2 [IV] | | 13.0 11.3 |
| | COP at 47°F ² | | 4.3 |
| | COP at 17°F at Maximum Capacity ³ | | 2.11 |
| | COP at 5°F at Maximum Capacity ⁴ | | 2.01 |
| | ENERGY STAR® Certified | | Yes |
| Electrical | Voltage, Phase, Frequency | | 208/230, 1, 60 |
| | Guaranteed Voltage Range | V AC | 187 - 253 |
| | Voltage: Indoor - Outdoor, S1-S2 | V AC | 208/230 |
| | Voltage: Indoor - Outdoor, S2-S3 | V DC | 24 |
| | Short-circuit Current Rating [SCCR] | kA | 5 |
| | Recommended Fuse/Breaker Size (Outdoor) | A | 15 |
| | Recommended Wire Size [Indoor - Outdoor] | AWG | 14 |
| Indoor Unit | Power Supply | | Indoor unit is powered by the outdoor unit |
| | MCA | A | 1.0 |
| | Fan Motor Full Load Amperage | A | 0.62 |
| | Fan Motor Type | | DC Motor |
| | Airflow Rate at Cooling, Dry | CFM | 138–198–272–360–417 |
| | Airflow Rate at Cooling, Wet | CFM | 117–168–231–306–354 |
| | Airflow Rate at Heating, Dry | CFM | 138–191–254–328–417 |
| | Sound Pressure Level [Cooling] | dB[A] | 21–27–34–41–46 |
| | Sound Pressure Level [Heating] | dB[A] | 21–27–34–40–46 |
| | Drain Pipe Size | In. [mm] | 5/8 O.D [15] |
| | Coating on Heat Exchanger | | — |
| | External Finish Color | | Munsell 1.0Y 9.2/0.2 |
| | Unit Dimensions | W x D x H: In. [mm] | 29-17/32 x 8-15/32 x 23-5/8 [750 x 215 x 600] |
| | Package Dimensions | W x D x H: In. [mm] | 32-2/16 x 10-3/16 x 27-2/16 [816 x 275 x 693] |
| | Unit Weight | Lbs. [kg] | 33 [15.0] |
| | Package Weight | Lbs. [kg] | 41 [18.5] |
| Indoor Unit Operating Temperature Range | Cooling Intake Air Temp [Maximum / Minimum]* | °F | 90 DB, 73 WB / 67 DB, 57 WB |
| | Heating Intake Air Temp [Maximum / Minimum] | °F | 80 DB / 70 DB |

NOTES:

AHRI Rated Conditions

(Rated data is determined at a fixed compressor speed)

¹Cooling (Indoor // Outdoor)

°F 80 DB, 67 WB // 95 DB, 75 WB

²Heating at 47°F (Indoor // Outdoor)

°F 70 DB, 60 WB // 47 DB, 43 WB

³Heating at 17°F (Indoor // Outdoor)

°F 70 DB, 60 WB // 17 DB, 15 WB

Conditions

⁴Heating at 5°F (Indoor // Outdoor)

°F 70 DB, 60 WB // 5 DB, 4 WB

⁵Heating at -4°F (Indoor // Outdoor)

°F 70 DB, 60 WB // -4 DB, -5 WB

⁷Heating at -13°F (Indoor // Outdoor)

°F 70 DB, 60 WB // -13 DB, -14 WB

*Indoor/Outdoor Unit Operating Temperature Range (Cooling Air Temp [Maximum / Minimum]):

• Applications should be restricted to comfort cooling only; equipment cooling applications are not recommended for low ambient temperature conditions.

**Outdoor Unit Operating Temperature Range (Cooling Thermal Lock-out / Re-start Temperatures; Heating Thermal Lock-out / Re-start Temperatures):

• System cuts out in heating mode to avoid thermistor error and automatically restarts at these temperatures.

SPECIFICATIONS: MFZ-KJ09NA & MUFZ-KJ09NAHZ

| | | | |
|--|--|---------------------|--|
| Outdoor Unit | MCA | A | 11.0 |
| | MOCP | A | 15 |
| | Fan Motor Full Load Amperage | A | 0.5 |
| | Fan Motor Output | W | 50 |
| | Airflow Rate [Cooling / Heating] | CFM | 1074 / 1202 |
| | Refrigerant Control | | LEV |
| | Defrost Method | | Reverse Cycle |
| | Sound Pressure Level, Cooling ¹ | dB(A) | 48 |
| | Sound Pressure Level, Heating ² | dB(A) | 50 |
| | Compressor Type | | DC INVERTER-driven Twin Rotary |
| | Compressor Model | | SNB140FQUMT |
| | Compressor Rated Load Amps | A | 8.2 |
| | Compressor Locked Rotor Amps | A | 10.3 |
| | Compressor Oil [Type // Charge] | oz. | FV50S // 11.8 |
| | External Finish Color | | Munsell 3Y 7.8/1.1 |
| | Base Pan Heater | | Built-in |
| | Unit Dimensions | W x D x H: In. [mm] | 31-1/2 x 11-1/4 x 21-5/8 [800 x 285 x 550] |
| | Package Dimensions | W x D x H: In. [mm] | 37 x 14-15/16 x 24-13/16 [940 x 380 x 630] |
| | Unit Weight | Lbs. [kg] | 83 [38] |
| | Package Weight | Lbs. [kg] | 90 [90] |
| Outdoor Unit Operating Temperature Range | Cooling Air Temp [Maximum / Minimum]* | °F | 115 DB / 14 DB |
| | Cooling Thermal Lock-out / Re-start Temperatures** | °F | 11 / 14 |
| | Heating Air Temp [Maximum / Minimum] | °F | 75 DB, 65 WB / -13 DB, -14 WB |
| | Heating Thermal Lock-out / Re-start Temperatures** | °F | -18 / -14 |
| Refrigerant | Type | | R410A |
| | Maximum Charge Quantity | Lbs, oz | 2.0, 10.0 |
| | Initial Charge Quantity | Ft. [m] | 25.0 [7.5] |
| | Additional Refrigerant Charge Per Additional Piping Length | oz./Ft. [g/m] | 0.216 [20] |
| Piping | Gas Pipe Size O.D. [Flared] | In.[mm] | 3/8 [9.52] |
| | Liquid Pipe Size O.D. [Flared] | In.[mm] | 1/4 [6.35] |
| | Maximum Piping Length | Ft. [m] | 65 [20] |
| | Maximum Height Difference | Ft. [m] | 40 [12] |
| | Maximum Number of Bends | | 10 |

NOTES:

AHRI Rated Conditions

(Rated data is determined at a fixed compressor speed)

| | | |
|--|----|------------------------------|
| ¹ Cooling (Indoor // Outdoor) | °F | 80 DB, 67 WB // 95 DB, 75 WB |
| ² Heating at 47°F (Indoor // Outdoor) | °F | 70 DB, 60 WB // 47 DB, 43 WB |
| ³ Heating at 17°F (Indoor // Outdoor) | °F | 70 DB, 60 WB // 17 DB, 15 WB |

Conditions

| | | |
|---|----|--------------------------------|
| ⁴ Heating at 5°F (Indoor // Outdoor) | °F | 70 DB, 60 WB // 5 DB, 4 WB |
| ⁵ Heating at -4°F (Indoor // Outdoor) | °F | 70 DB, 60 WB // -4 DB, -5 WB |
| ⁷ Heating at -13°F (Indoor // Outdoor) | °F | 70 DB, 60 WB // -13 DB, -14 WB |

*Indoor/Outdoor Unit Operating Temperature Range (Cooling Air Temp [Maximum / Minimum]):

- Applications should be restricted to comfort cooling only; equipment cooling applications are not recommended for low ambient temperature conditions.

**Outdoor Unit Operating Temperature Range (Cooling Thermal Lock-out / Re-start Temperatures; Heating Thermal Lock-out / Re-start Temperatures):

- System cuts out in heating mode to avoid thermistor error and automatically restarts at these temperatures.

INDOOR UNIT ACCESSORIES: MFZ-KJ09NA

| | | |
|----------------------------|---|-------------------|
| Control Interface | BACnet® and Modbus® Interface | PAC-UKPRC001-CN-1 |
| | CN24 Relay Kit | CN24RELAY-KIT-CM3 |
| | IT Extender | PAC-WHS01IE-E |
| | kumo station® for kumo cloud® | PAC-WHS01HC-E |
| | System Control Interface | MAC-334IF-E |
| | Thermostat Interface | PAC-US445CN-1 |
| | USNAP Adapter | PAC-WHS01UP-E |
| | Wireless Interface for kumo cloud® | PAC-USWHS002-WF-2 |
| Remote Sensor | Wired Remote Sensor | M21EAA307 |
| | Wireless temperature and humidity sensor for kumo cloud® | PAC-USWHS003-TH-1 |
| Wired Remote Controller | Deluxe Wired MA Remote Controller† | PAR-40MAAU |
| | Simple MA Remote Controller† | PAC-YT53CRAU-J |
| | Touch MA Controller† | PAR-CT01MAU-SB |
| Wireless Remote Controller | kumo touch™ RedLINK™ Wireless Controller | MHK2 |
| | Lockdown bracket for remote controller | RCMKP1CB |
| Condensate | Blue Diamond (Advanced) Mini Condensate Pump w/ Reservoir & Sensor (208/230V) [recommended] | X87-721 |
| | Blue Diamond (MicroBlue) Mini Condensate Pump (110/208/230V) up to 18,000 BTU/H | X86-003 |
| | Refco Condensate Pump (100-240 VAC) up to 120,000 BTU/H | COMBI |
| Disconnect Switch | (30A/600V/UL) [fits 2" X 4" utility box] - Black | TAZ-MS303 |
| Floor Mount Air Guide | Floor Mount Air Guide | MAC-760FD-E |
| Lineset | 15' x 1/4" x 15' / 3/8" Lineset (Twin-Tube Insulation) | MLS143812T-15 |
| | 30' x 1/4" x 30' / 3/8" Lineset (Twin-Tube Insulation) | MLS143812T-30 |
| | 50' x 1/4" x 50' / 3/8" Lineset (Twin-Tube Insulation) | MLS143812T-50 |
| | 65' x 1/4" x 65' / 3/8" Lineset (Twin-Tube Insulation) | MLS143812T-65 |

NOTES:

†Requires MAC-334IF-E

- M-Series EZ FIT® Recessed Ceiling Cassette, Floor-mount and Wall-mount

Allows indoor units to connect to an MA Controller:

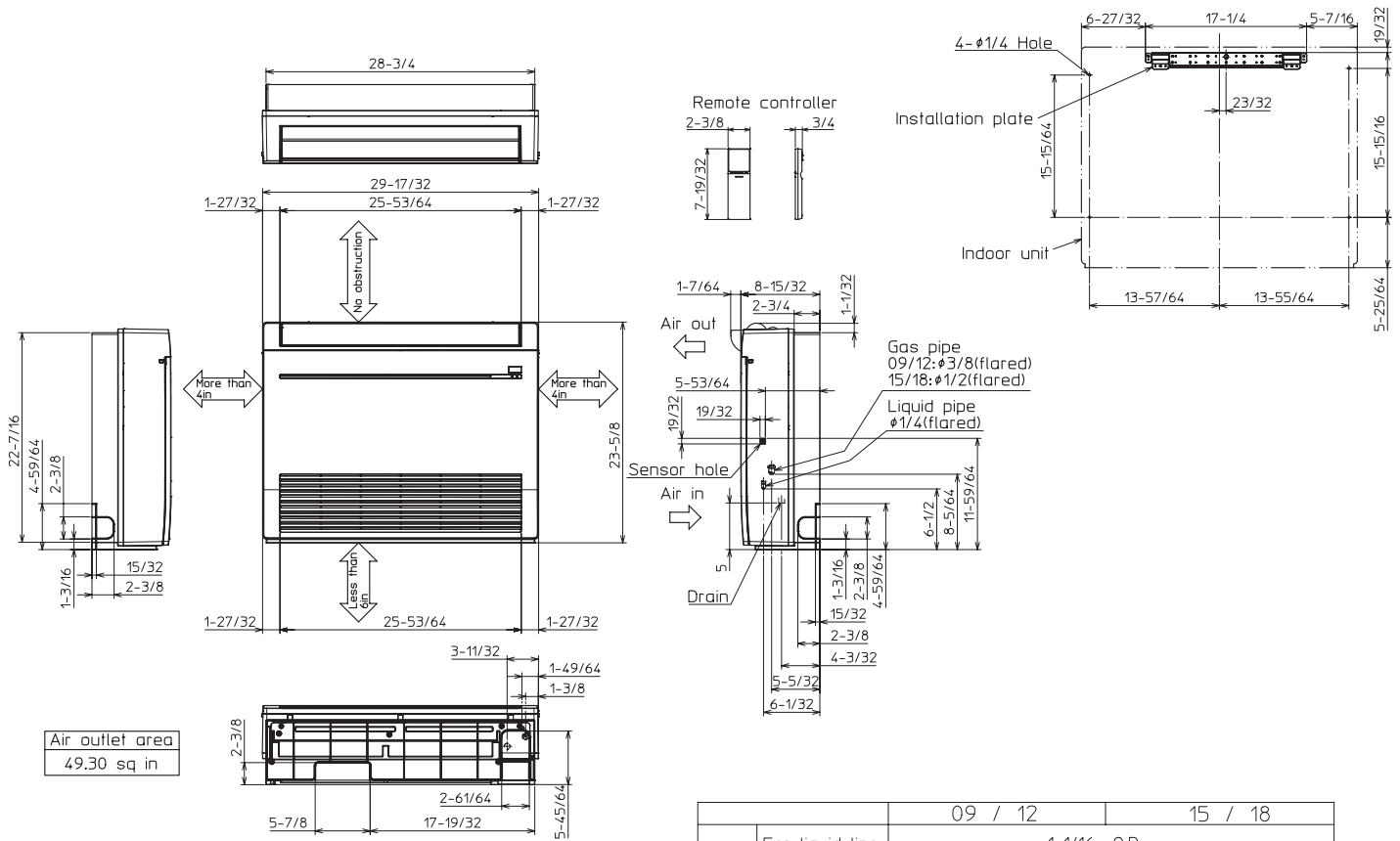
- Deluxe MA Remote Controller
- Simple MA Controller
- Touch MA Controller

OUTDOOR UNIT ACCESSORIES: MUFZ-KJ09NAHZ

| | | |
|----------------------|--|-------------|
| Air Outlet Guide | Air Outlet Guide | MAC-886SG-E |
| Control/Service Tool | M- & P-Series Maintenance Tool Cable Set | M21EC0397 |
| | USB/UART Conversion Cable (Required for all laptop connection) | M21EC1397 |
| Hail Guards | Hail Guard | HG-A7 |
| | Hail Guard | HG-B4 |
| Mini-Split Wire | 14 Gauge, 4 wire MiniSplit Cable—250 ft. roll | S144-250 |
| | 14 Gauge, 4 wire MiniSplit Cable—50 ft. roll | S144-50 |
| | 16 Gauge, 4 wire MiniSplit Cable—250 ft. roll | S164-250 |
| | 16 Gauge, 4 wire MiniSplit Cable—50 ft. roll | S164-50 |
| Mounting Pad | Condensing Unit Mounting Pad: 16" x 36" x 3" | ULTRILITE1 |
| | Outdoor Unit 3-1/4 inch Mounting Base (Pair) - Plastic | DSD-400P |
| Stand | 18" Single Fan Stand | QSMS1801M |
| | 24" Single Fan Stand | QSMS2401M |
| | Condenser Wall Bracket | QSWB2000M-1 |
| | Condenser Wall Bracket - Stainless Steel Finish | QSWBSS |
| | Outdoor Unit Stand — 12" High | QSMS1201M |

INDOOR UNIT DIMENSIONS: MFZ-KJ09NA

Unit: inch



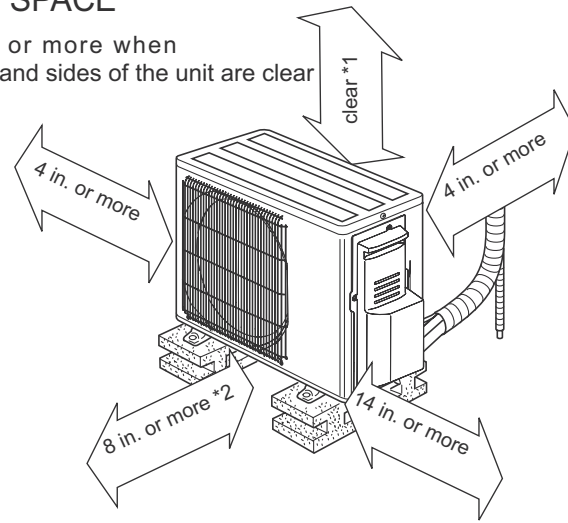
| | | | |
|------------|-----------------|---------------------------|---|
| | | 09 / 12 | 15 / 18 |
| Pipe cover | For liquid line | 1-1/16 0.D | |
| | For gas line | 1-1/16 0.D | 1-7/32 0.D |
| Piping | Liquid line | Flared connection 1/4 | |
| | Gas line | Flared connection 3/8 | Flared connection 1/2 |
| Drain hose | | Heat insulater 1-9/64 0.D | Connection point 5/8 0.D Effective length 13-25/32 (case of right backward piping) |

OUTDOOR UNIT DIMENSIONS: MUFZ-KJ09NAHZ

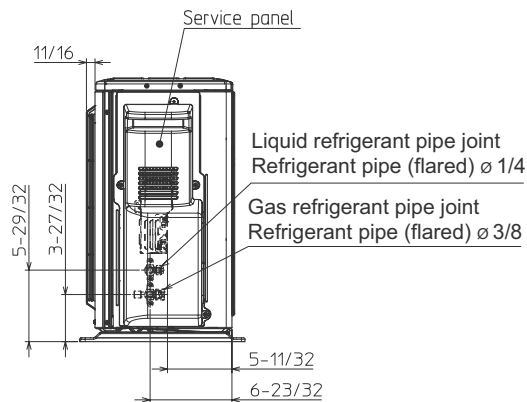
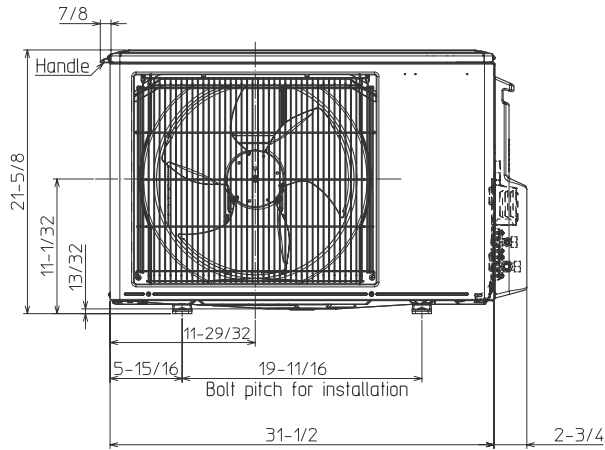
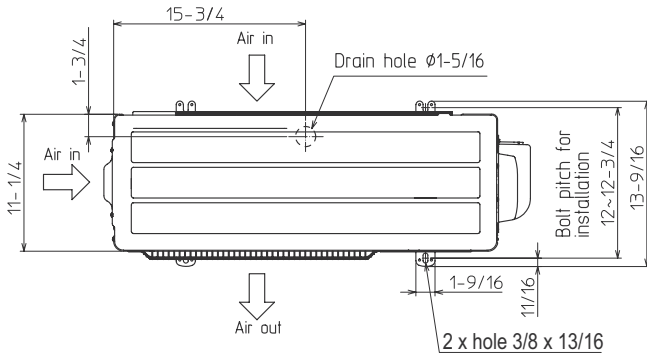
Unit: inch

REQUIRED SPACE

*1 4 in. or more when front and sides of the unit are clear



*2 When any 2 sides of left, right and rear of the unit are clear



1340 Satellite Boulevard Suwanee, GA 30024
Toll Free: 800-433-4822 www.mehvac.com

FORM# MFZ-KJ09NA & MUFZ-KJ09NAHZ - 202303

