

MITSUBISHI ELECTRIC TRANE HVAC US

SPLIT-TYPE AIR CONDITIONERS

Revision A:

- NTXWST06/09/12/15A112AB and NTYWST09/12/15A112AB have been added.

OBBT732 is void.

INDOOR UNIT

No. OBBT732
REVISED EDITION-A

PARTS CATALOG

Models

NTXWST06A112AA
NTXWST06A112AB
NTXWST09A112AA
NTXWST09A112AB
NTXWST12A112AA
NTXWST12A112AB
NTXWST15A112AA
NTXWST15A112AB
NTXWST18A112AA
NTXWST24A112AA

NTYWST09A112AA
NTYWST09A112AB
NTYWST12A112AA
NTYWST12A112AB
NTYWST15A112AA
NTYWST15A112AB
NTYWST18A112AA
NTYWST24A112AA



NTXWST18A112AA
NTYWST18A112AA



CONTENTS

1. SERVICE PARTS LIST2

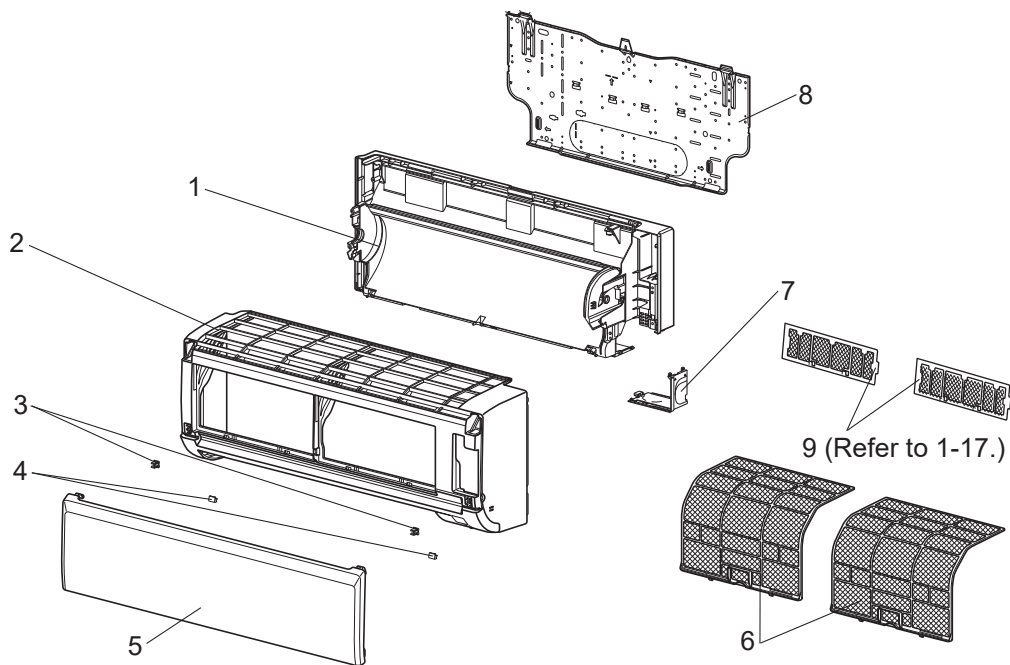
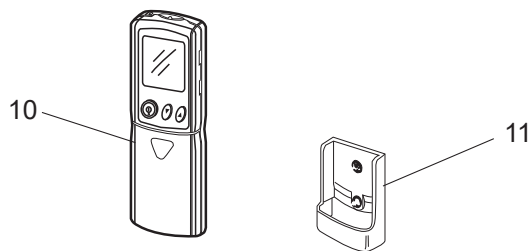
SERVICE MANUAL (OBHT732)

Revision A:

• NTXWST06/09/12/15A112AB and NTYWST09/12/15A112AB have been added.

1**SERVICE PARTS LIST**

NTXWST06A112AA NTXWST09A112AA NTXWST12A112AA NTXWST15A112AA
NTYWST09A112AA NTYWST12A112AA NTYWST15A112AA

1-1. INDOOR UNIT STRUCTURAL PARTS**1-2. ACCESSORY AND REMOTE CONTROLLER**

1-1. INDOOR UNIT STRUCTURAL PARTS

1. The part quantity below indicates the required number of pieces per unit.

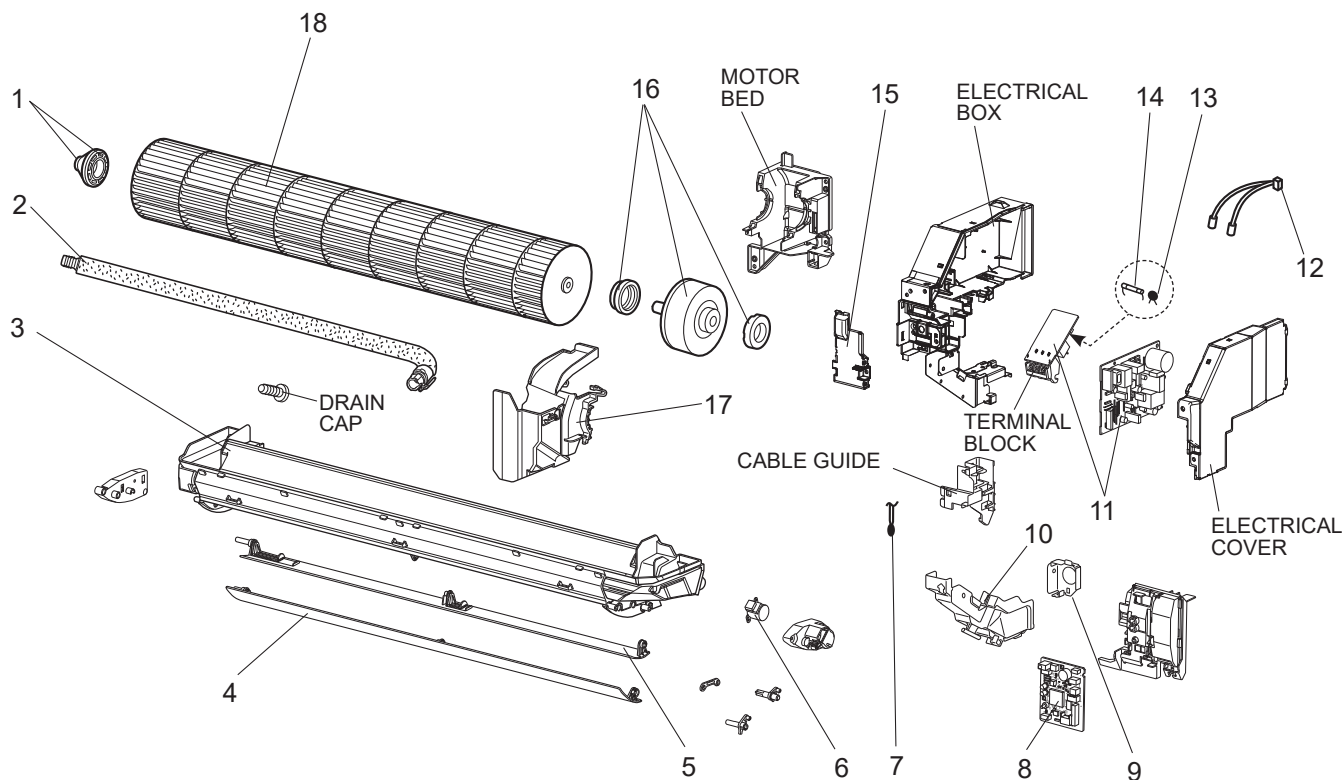
No.	Part No.	Part name	NTXWST06A112AA	NTXWST09A112AA	NTXWST12A112AA	NTXWST15A112AA	NTYWST09A112AA	NTYWST12A112AA	NTYWST15A112AA	Symbol in Wiring Diagram	Remarks
1	U01 A01 234	BOX ASSEMBLY	1	1	1	1	1	1	1		
2	U01 A07 000	PANEL ASSEMBLY	1	1	1	1	1	1	1		Includes No. 3, 4, and 5
3	U01 A01 142	CATCH	2	2	2	2	2	2	2		2 PCS/SET
4	U01 A01 067	SCREW CAP	2	2	2	2	2	2	2		2 PCS/SET
5	U01 T01 010	FRONT PANEL	1	1	1	1	1	1	1		
6	U01 A01 100	NANO PLATINUM FILTER	2	2	2	2	2	2	2		1 PC/SET
7	U01 A01 975	CORNER BOX (RIGHT)	1	1	1	1	1	1	1		
8	U01 A01 970	INSTALLATION PLATE	1	1	1	1	1	1	1		
9	-	AIR CLEANING FILTER (ANTI-ALLERGY ENZYME FILTER)	2	2	2	2	2	2	2		MAC-408FT-E 2 PCS/SET

1-2. ACCESSORY AND REMOTE CONTROLLER

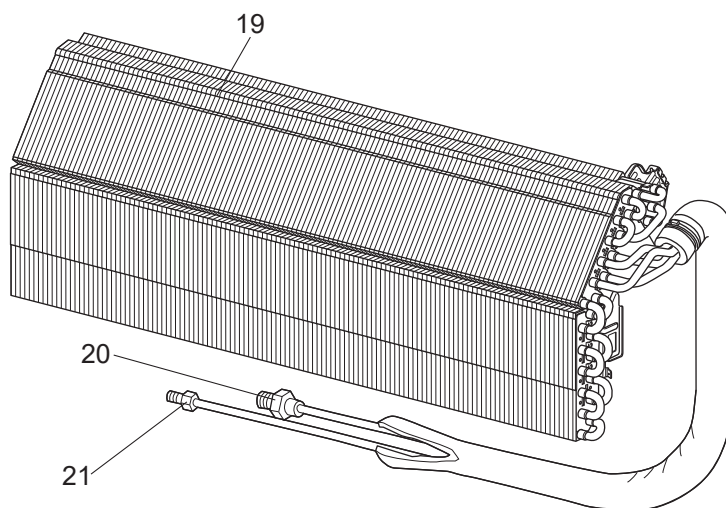
1. The part quantity below indicates the required number of pieces per unit.

No.	Part No.	Part name	NTXWST06A112AA	NTXWST09A112AA	NTXWST12A112AA	NTXWST15A112AA	NTYWST09A112AA	NTYWST12A112AA	NTYWST15A112AA	Symbol in Wiring Diagram	Remarks
10	U01 A08 426	REMOTE CONTROLLER	1	1	1	1					KM18G
10	U01 A07 426	REMOTE CONTROLLER					1	1	1		KM18H
11	U01 A01 083	REMOTE CONTROLLER HOLDER	1	1	1	1	1	1	1		

NTXWST06A112AA NTXWST09A112AA NTXWST12A112AA NTXWST15A112AA
NTYWST09A112AA NTYWST12A112AA NTYWST15A112AA
1-3. INDOOR UNIT ELECTRICAL PARTS AND FUNCTIONAL PARTS



1-4. INDOOR UNIT HEAT EXCHANGER



1-3. INDOOR UNIT ELECTRICAL PARTS AND FUNCTIONAL PARTS

1. The part quantity below indicates the required number of pieces per unit.

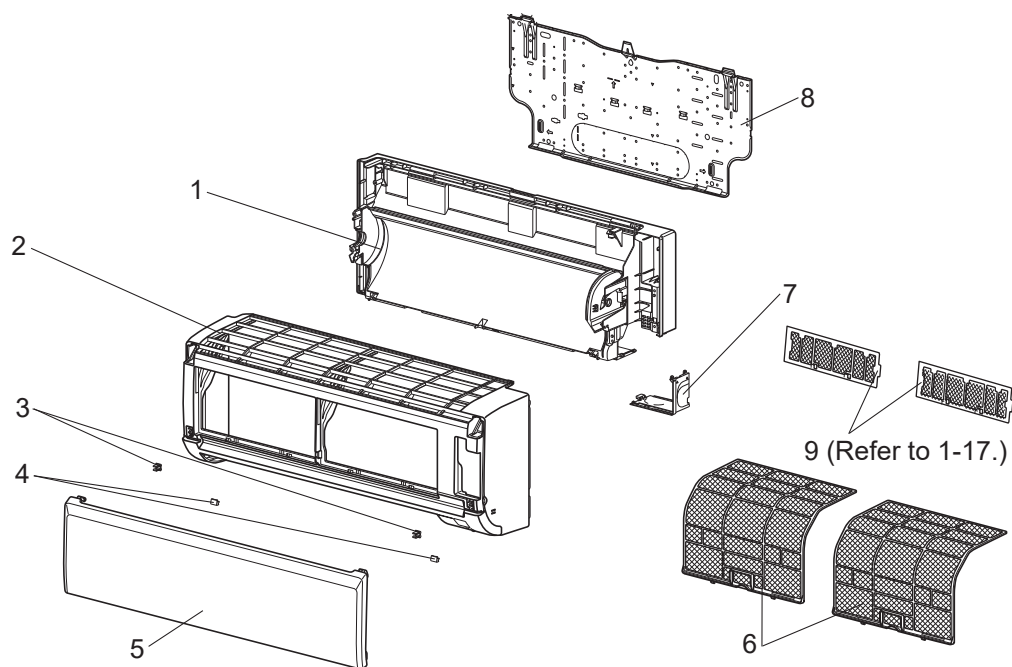
No.	Part No.	Part name	NTXWST06A112AA	NTXWST09A112AA	NTXWST12A112AA	NTXWST15A112AA	NTYWST09A112AA	NTYWST12A112AA	NTYWST15A112AA	Symbol in Wiring Diagram	Remarks
1	U01 A02 510	BEARING MOUNT ASSEMBLY	1	1	1	1	1	1	1		Includes sleeve bearing
2	U01 A01 702	DRAIN HOSE	1	1	1	1	1	1	1		
3	U01 A01 235	NOZZLE ASSEMBLY	1	1	1	1	1	1	1		
4	U01 A01 040	VANE-UPPER	1	1	1	1	1	1	1		
5	U01 A01 041	VANE-LOWER	1	1	1	1	1	1	1		
6	U01 A01 303	VANE MOTOR	1	1	1	1	1	1	1	MV	UP & DOWN
7	U01 A01 308	ROOM TEMPERATURE THERMISTOR	1	1	1	1	1	1	1	RT11	
8	U01 A28 452	ELECTRONIC CONTROL P.C. BOARD	1								
8	U01 A29 452	ELECTRONIC CONTROL P.C. BOARD		1							
8	U01 A30 452	ELECTRONIC CONTROL P.C. BOARD			1						
8	U01 A31 452	ELECTRONIC CONTROL P.C. BOARD				1					
8	U01 A14 452	ELECTRONIC CONTROL P.C. BOARD					1				
8	U01 A15 452	ELECTRONIC CONTROL P.C. BOARD						1			
8	U01 A16 452	ELECTRONIC CONTROL P.C. BOARD							1		
9	U01 A04 978	CONDUIT PLATE	1	1	1	1	1	1	1		
10	U01 A01 979	CONDUIT COVER	1	1	1	1	1	1	1		
11	U01 A01 440	POWER P.C. BOARD	1	1	1	1	1	1	1		Includes TERMINAL BLOCK with TERMINAL P.C. BOARD
12	U01 A01 307	INDOOR COIL THERMISTOR	1	1	1	1	1	1	1	RT12, RT13	
13	U01 A01 385	VARISTOR	1	1	1	1	1	1	1	NR11	
14	U01 A01 382	FUSE	1	1	1	1	1	1	1	F11	T3.15AL250V
15	U01 A01 784	V.A. CLAMP	1	1	1	1	1	1	1		
16	U01 A01 300	INDOOR FAN MOTOR	1	1	1	1	1	1	1	MF	RC0J30-□□, Includes FAN MOTOR RUBBER MOUNT (2 PCS/SET)
17	U01 A01 333	MOTOR BAND	1	1	1	1	1	1	1		
18	U01 A01 302	LINE FLOW FAN	1	1	1	1	1	1	1		

1-4. INDOOR UNIT HEAT EXCHANGER

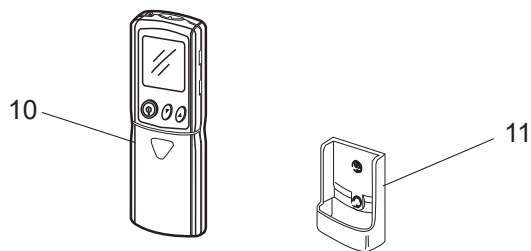
1. The part quantity below indicates the required number of pieces per unit.

No.	Part No.	Part name	NTXWST06A112AA	NTXWST09A112AA	NTXWST12A112AA	NTXWST15A112AA	NTYWST09A112AA	NTYWST12A112AA	NTYWST15A112AA	Symbol in Wiring Diagram	Remarks
19	U01 A03 620	INDOOR HEAT EXCHANGER	1	1	1		1	1			
19	U01 A04 620	INDOOR HEAT EXCHANGER				1			1		
20	U01 A01 666	UNION GAS	1	1	1		1	1			ø3/8 (ø9.52)
20	U01 A02 666	UNION GAS				1			1		ø1/2 (ø12.7)
21	U01 A01 667	UNION LIQUID	1	1	1	1	1	1	1		ø1/4 (ø6.35)

NTXWST06A112AB NTXWST09A112AB NTXWST12A112AB NTXWST15A112AB
NTYWST09A112AB NTYWST12A112AB NTYWST15A112AB
1-5. INDOOR UNIT STRUCTURAL PARTS



1-6. ACCESSORY AND REMOTE CONTROLLER



1-5. INDOOR UNIT STRUCTURAL PARTS

1. The part quantity below indicates the required number of pieces per unit.

No.	Part No.	Part name	NTXWST06A112AB	NTXWST09A112AB	NTXWST12A112AB	NTXWST15A112AB	NTYWST09A112AB	NTYWST12A112AB	NTYWST15A112AB	Symbol in Wiring Diagram	Remarks
1	U01 A01 234	BOX ASSEMBLY	1	1	1	1	1	1	1		
2	U01 A07 000	PANEL ASSEMBLY	1	1	1	1	1	1	1		Includes No. 3, 4, and 5
3	U01 A01 142	CATCH	2	2	2	2	2	2	2		2 PCS/SET
4	U01 A01 067	SCREW CAP	2	2	2	2	2	2	2		2 PCS/SET
5	U01 T01 010	FRONT PANEL	1	1	1	1	1	1	1		
6	U01 A01 100	NANO PLATINUM FILTER	2	2	2	2	2	2	2		1 PC/SET
7	U01 A01 975	CORNER BOX (RIGHT)	1	1	1	1	1	1	1		
8	U01 A01 970	INSTALLATION PLATE	1	1	1	1	1	1	1		
9	-	AIR CLEANING FILTER (ANTI-ALLERGY ENZYME FILTER)	2	2	2	2	2	2	2		MAC-408FT-E 2 PCS/SET

1-6. ACCESSORY AND REMOTE CONTROLLER

1. The part quantity below indicates the required number of pieces per unit.

No.	Part No.	Part name	NTXWST06A112AB	NTXWST09A112AB	NTXWST12A112AB	NTXWST15A112AB	NTYWST09A112AB	NTYWST12A112AB	NTYWST15A112AB	Symbol in Wiring Diagram	Remarks
10	U01 A13 426	REMOTE CONTROLLER	1	1	1	1					KH21G
10	U01 A14 426	REMOTE CONTROLLER					1	1	1		KH21H
11	U01 A03 083	REMOTE CONTROLLER HOLDER	1	1	1	1	1	1	1		

1-7. INDOOR UNIT ELECTRICAL PARTS AND FUNCTIONAL PARTS



1-7. INDOOR UNIT ELECTRICAL PARTS AND FUNCTIONAL PARTS

1. The part quantity below indicates the required number of pieces per unit.

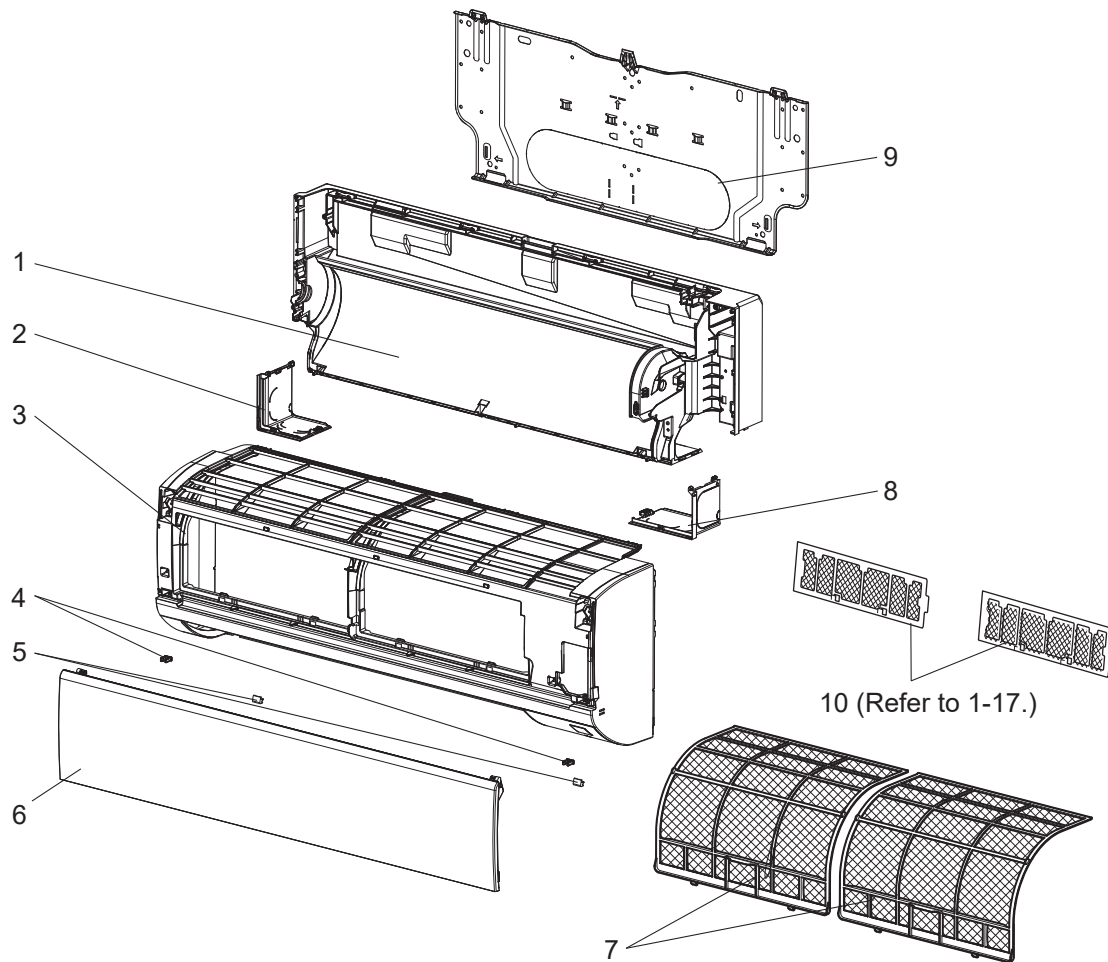
No.	Part No.	Part name	NTXWST06A112AB	NTXWST09A112AB	NTXWST12A112AB	NTXWST15A112AB	NTYWST09A112AB	NTYWST12A112AB	NTYWST15A112AB	Symbol in Wiring Diagram	Remarks
1	U01 A02 510	BEARING MOUNT ASSEMBLY	1	1	1	1	1	1	1		Includes sleeve bearing
2	U01 A01 702	DRAIN HOSE	1	1	1	1	1	1	1		
3	U01 A01 235	NOZZLE ASSEMBLY	1	1	1	1	1	1	1		
4	U01 A01 040	VANE-UPPER	1	1	1	1	1	1	1		
5	U01 A01 041	VANE-LOWER	1	1	1	1	1	1	1		
6	U01 A01 303	VANE MOTOR	1	1	1	1	1	1	1	MV	UP & DOWN
7	U01 A08 308	ROOM TEMPERATURE THERMISTOR	1	1	1	1	1	1	1	RT11	
8	U01 A45 452	ELECTRONIC CONTROL P.C. BOARD	1								
8	U01 A46 452	ELECTRONIC CONTROL P.C. BOARD		1							
8	U01 A47 452	ELECTRONIC CONTROL P.C. BOARD			1						
8	U01 A48 452	ELECTRONIC CONTROL P.C. BOARD				1					
8	U01 A49 452	ELECTRONIC CONTROL P.C. BOARD					1				
8	U01 A50 452	ELECTRONIC CONTROL P.C. BOARD						1			
8	U01 A51 452	ELECTRONIC CONTROL P.C. BOARD							1		
9	U01 A04 978	CONDUIT PLATE	1	1	1	1	1	1	1		
10	U01 A01 979	CONDUIT COVER	1	1	1	1	1	1	1		
11	U01 A03 440	POWER P.C. BOARD	1	1	1	1	1	1	1		Includes TERMINAL BLOCK with TERMINAL P.C. BOARD
12	U01 A09 308	INDOOR COIL THERMISTOR	1	1	1	1	1	1	1	RT12, RT13	
13	U01 A01 385	VARISTOR	1	1	1	1	1	1	1	NR11	
14	U01 001 239	FUSE	1	1	1	1	1	1	1	F11	T3.15AL250V
15	U01 A01 784	V.A. CLAMP	1	1	1	1	1	1	1		
16	U01 A01 300	INDOOR FAN MOTOR	1	1	1	1	1	1	1	MF	RC0J30-□□, Includes FAN MOTOR RUBBER MOUNT (2 PCS/SET)
17	U01 A01 333	MOTOR BAND	1	1	1	1	1	1	1		
18	U01 A01 302	LINE FLOW FAN	1	1	1	1	1	1	1		

1-8. INDOOR UNIT HEAT EXCHANGER

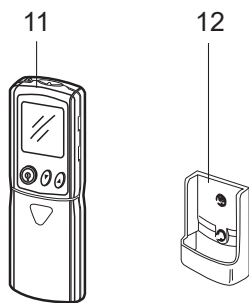
1. The part quantity below indicates the required number of pieces per unit.

No.	Part No.	Part name	NTXWST06A112AB	NTXWST09A112AB	NTXWST12A112AB	NTXWST15A112AB	NTYWST09A112AB	NTYWST12A112AB	NTYWST15A112AB	Symbol in Wiring Diagram	Remarks
19	U01 A03 620	INDOOR HEAT EXCHANGER	1	1	1		1	1			
19	U01 A04 620	INDOOR HEAT EXCHANGER				1			1		
20	U01 A01 666	UNION GAS	1	1	1		1	1			ø3/8 (ø9.52)
20	U01 A02 666	UNION GAS				1			1		ø1/2 (ø12.7)
21	U01 A01 667	UNION LIQUID	1	1	1	1	1	1	1		ø1/4 (ø6.35)

NTXWST18A112AA NTYWST18A112AA
1-9. INDOOR UNIT STRUCTURAL PARTS



1-10. ACCESSORY AND REMOTE CONTROLLER



1-9. INDOOR UNIT STRUCTURAL PARTS

1. The part quantity below indicates the required number of pieces per unit.

No.	Part No.	Part name	NTXWST18A112AA	NTYWST18A112AA	Symbol in Wiring Diagram	Remarks
1	E22 N87 234	BOX ASSEMBLY	1	1		
2	E22 N87 976	CORNER BOX LEFT	1	1		
3	E22 61F 000	PANEL ASSEMBLY	1	1		Includes No. 4,6
4	E22 F95 142	CATCH	2	2		2 PCS/SET
5	E22 913 067	SCREW CAP	2	2		2 PCS/SET
6	E22 61F 010	FRONT PANEL	1	1		
7	E22 N94 100	AIR FILTER (NANO PLATINUM FILTER)	2	2		1 PC/SET
8	E22 N87 975	CORNER BOX RIGHT	1	1		
9	E22 N87 970	INSTALLATION PLATE	1	1		
10	-	AIR CLEANING FILTER (ANTI-ALLERGY ENZYME FILTER)	2	2		MAC-408FT-E 2 PCS/SET

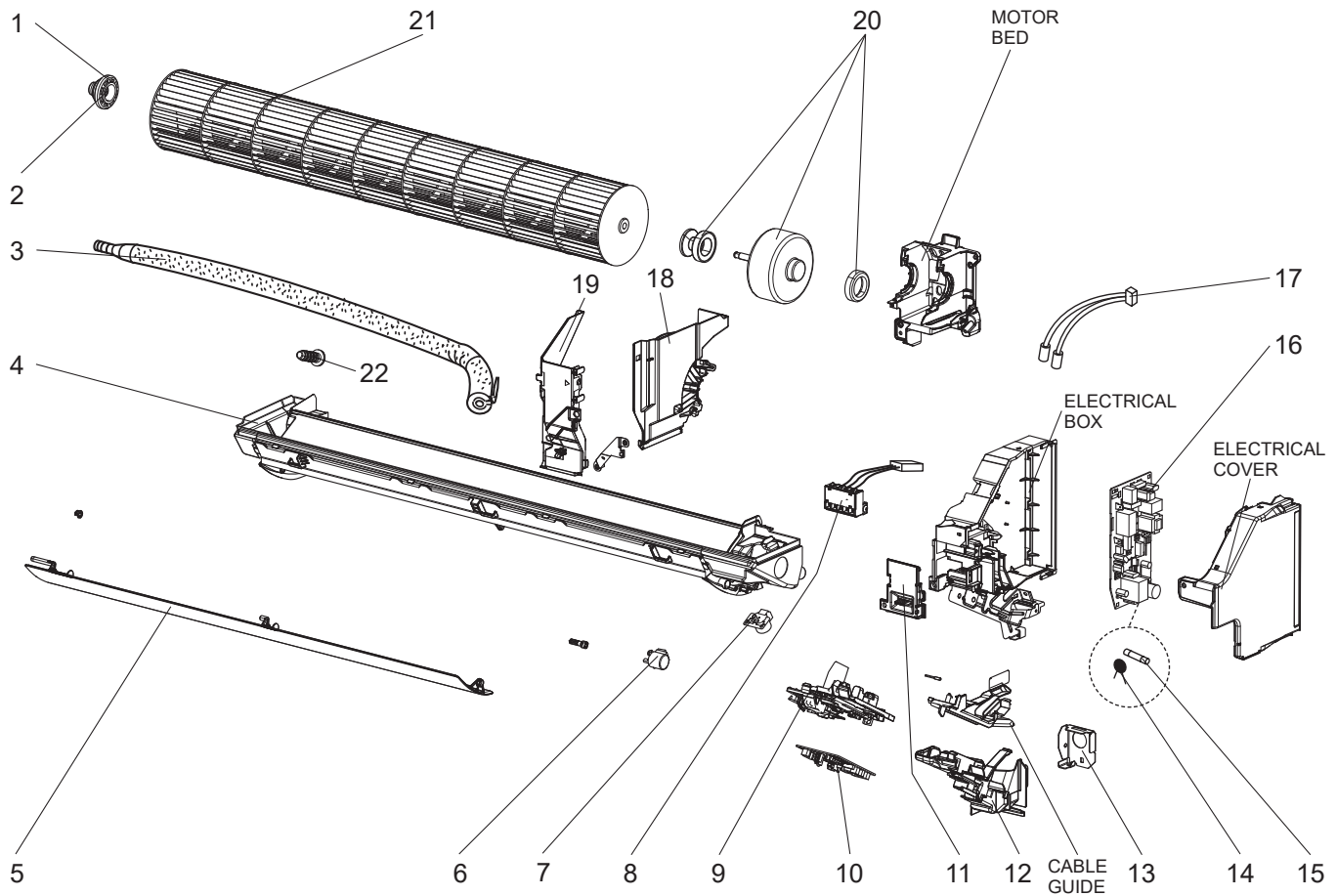
1-10. ACCESSORY AND REMOTE CONTROLLER

1. The part quantity below indicates the required number of pieces per unit.

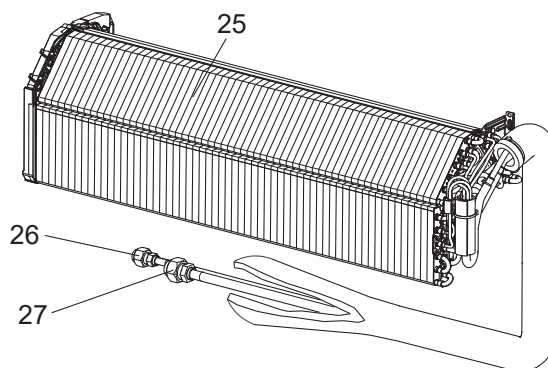
No.	Part No.	Part name	NTXWST18A112AA	NTYWST18A112AA	Symbol in Wiring Diagram	Remarks
11	E22 62F 426	REMOTE CONTROLLER	1			KM18E
11	E22 61F 426	REMOTE CONTROLLER		1		KM18F
12	E22 527 083	REMOTE CONTROLLER HOLDER	1	1		

NTXWST18A112AA NTYWST18A112AA

1-11. INDOOR UNIT ELECTRICAL PARTS AND FUNCTIONAL PARTS



1-12. INDOOR UNIT HEAT EXCHANGER



1-11. INDOOR UNIT ELECTRICAL PARTS AND FUNCTIONAL PARTS

1. The part quantity below indicates the required number of pieces per unit.

2. The circled No. indicates that the part is not shown in the figure.

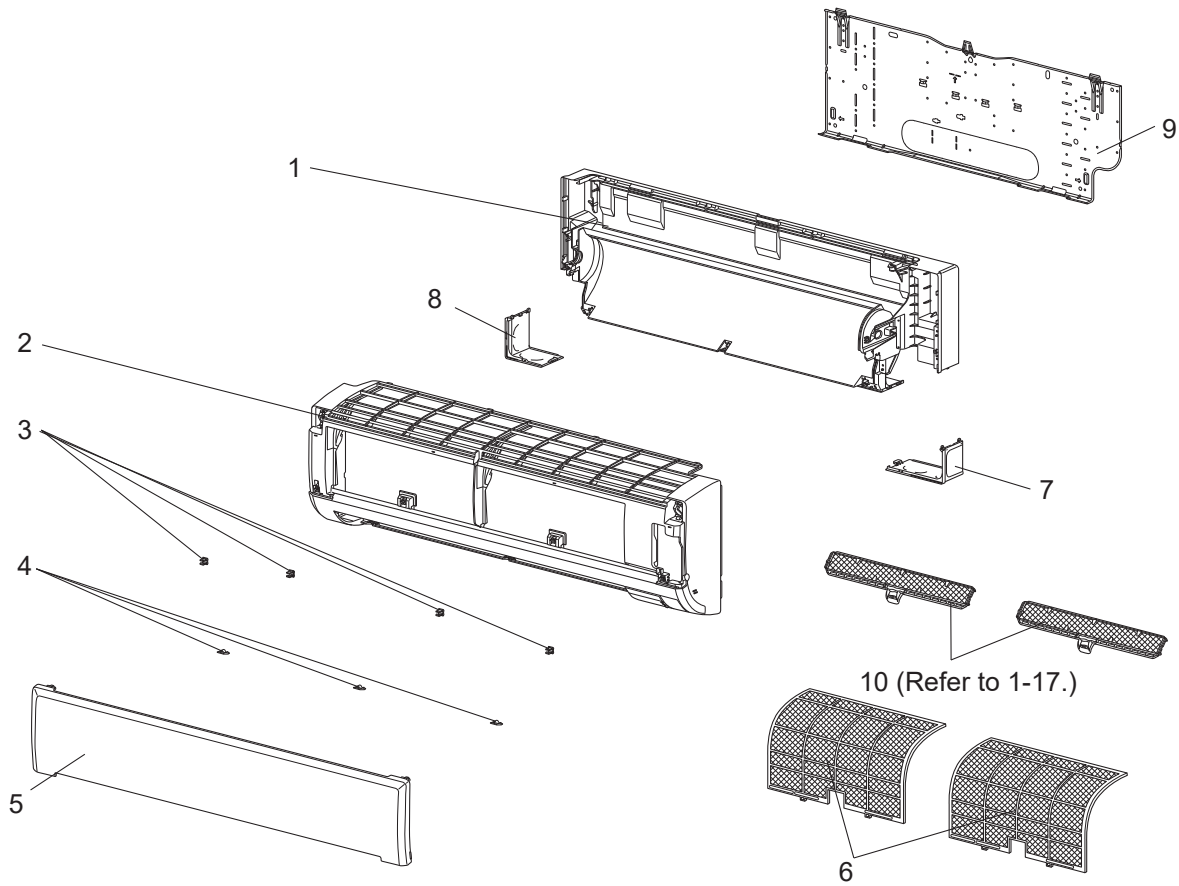
No.	Part No.	Part name	NTXWST18A112AA	NTYWST18A112AA	Symbol in Wiring Diagram	Remarks
1	E22 751 509	BEARING MOUNT	1	1		
2	E22 001 504	SLEEVE BEARING	1	1		
3	E22 P72 702	DRAIN HOSE	1	1		
4	E22 N94 235	NOZZLE ASSEMBLY	1	1		FULL ASSEMBLY EXCEPT DRAIN HOSE
5	E22 N87 040	HORIZONTAL VANE	1	1		Includes SHAFTS
6	E22 N87 303	VANE MOTOR (HORIZONTAL)	1	1	MV1	UP & DOWN
7	E22 J44 303	VANE MOTOR (VERTICAL)	1	1	MV2	RIGHT & LEFT
8	E22 N94 375	TERMINAL BLOCK ASSEMBLY	1	1	TB	Includes LEAD WIRE
9	E22 N87 095	CONTROL P.C. BOARD HOLDER ASSEMBLY	1	1		
10	E22 21B 452	ELECTRONIC CONTROL P.C. BOARD	1			
10	E22 N94 452	ELECTRONIC CONTROL P.C. BOARD		1		
11	E22 N87 784	V.A. CLAMP	1	1		
12	E22 N94 979	CONDUIT COVER	1	1		
13	E22 N94 978	CONDUIT PLATE	1	1		
14	E22 B75 385	VARISTOR	1	1	NR11	
15	E22 A49 382	FUSE	1	1	F11	T3.15AL250V
16	E22 N94 440	POWER P.C. BOARD	1	1		
17	E22 N87 307	INDOOR COIL THERMISTOR	1	1	RT12, RT13	
18	E22 N87 333	MOTOR BAND	1	1		
19	E22 N87 541	WATER COVER	1	1		
20	E22 J44 300	INDOOR FAN MOTOR	1	1	MF	RC0J30-□□, Includes FAN MOTOR RUBBER MOUNT (2 PCS/SET)
21	E22 N87 302	LINE FLOW FAN	1	1		
22	—	DRAIN CAP	1	1		SU26R611H01
(23)	E22 61F 308	ROOM TEMPERATURE THERMISTOR	1	1	RT11	
(24)	E22 61F 303	VERTICAL VANE MOTOR UNIT	1	1		Includes MV2 with CLANK, LINK

1-12. INDOOR UNIT HEAT EXCHANGER

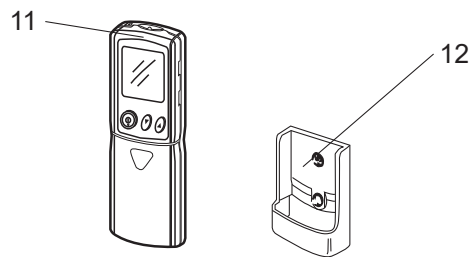
1. The part quantity below indicates the required number of pieces per unit.

No.	Part No.	Part name	NTXWST18A112AA	NTYWST18A112AA	Symbol in Wiring Diagram	Remarks
25	E22 28E 620	INDOOR HEAT EXCHANGER	1	1		
26	E22 151 667	UNION (LIQUID)	1	1		ø1/4 (ø6.35)
27	E22 179 667	UNION (GAS)	1	1		ø1/2 (ø12.7)

NTXWST24A112AA NTYWST24A112AA
1-13. INDOOR UNIT STRUCTURAL PARTS



1-14. ACCESSORY AND REMOTE CONTROLLER



1-13. INDOOR UNIT STRUCTURAL PARTS

1. The part quantity below indicates the required number of pieces per unit.

No.	Part No.	Part name	NTXWST24A112AA	NTYWST24A112AA	Symbol in Wiring Diagram	Remarks
1	E22 J94 234	BOX ASSEMBLY	1	1		
2	E22 82F 000	PANEL ASSEMBLY	1	1		Includes No. 3, 5
3	E22 408 142	CATCH	4	4		4 PCS/SET
4	E22 F28 067	SCREW CAP	3	3		3 PCS/SET
5	E22 82F 010	FRONT PANEL	1	1		
6	E22 F28 100	AIR FILTER (NANO PLATINUM FILTER)	2	2		1 PC/SET
7	E22 F28 975	CORNER BOX (RIGHT)	1	1		
8	E22 F28 976	CORNER BOX (LEFT)	1	1		
9	E22 F28 970	INSTALLATION PLATE	1	1		
10	-	AIR CLEANING FILTER (ELECTROSTATIC ANTI-ALLERGY ENZYME FILTER)	2	2		MAC-2310FT-E 2 PCS/SET

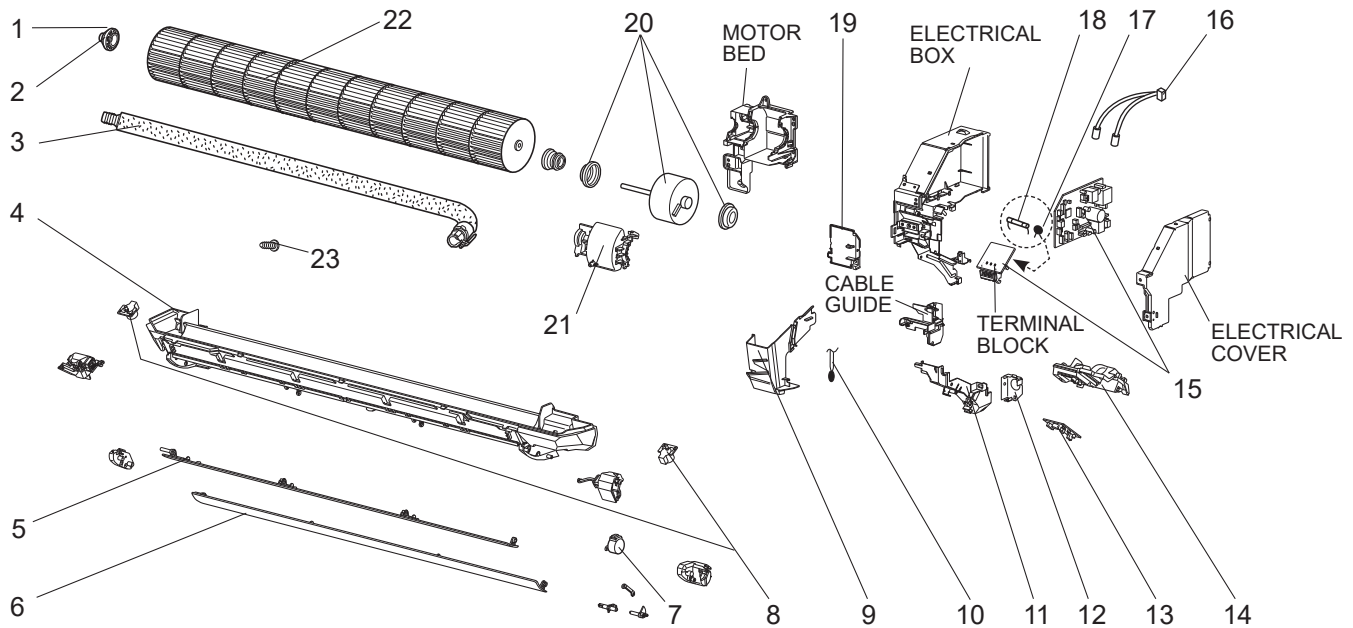
1-14. ACCESSORY AND REMOTE CONTROLLER

1. The part quantity below indicates the required number of pieces per unit.

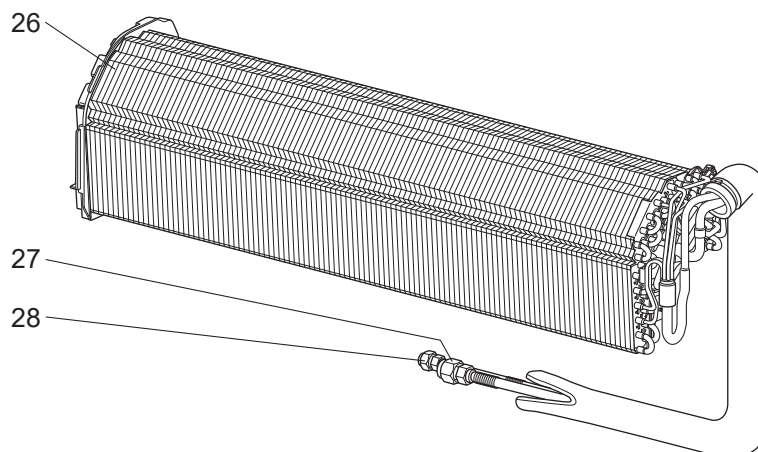
No.	Part No.	Part name	NTXWST24A112AA	NTYWST24A112AA	Symbol in Wiring Diagram	Remarks
11	E22 82F 426	REMOTE CONTROLLER	1			KM18J
11	E22 84F 426	REMOTE CONTROLLER		1		KM18K
12	E22 527 083	REMOTE CONTROLLER HOLDER	1	1		

NTXWST24A112AA NTYWST24A112AA

1-15. INDOOR UNIT ELECTRICAL PARTS AND FUNCTIONAL PARTS



1-16. INDOOR UNIT HEAT EXCHANGER



1-15. INDOOR UNIT ELECTRICAL PARTS AND FUNCTIONAL PARTS

1. The part quantity below indicates the required number of pieces per unit.

2. The circled No. indicates that the part is not shown in the figure.

No.	Part No.	Part name	NTXWST24A112AA	NTYWST24A112AA	Symbol in Wiring Diagram	Remarks
1	E22 751 509	BEARING MOUNT	1	1		
2	E22 001 504	SLEEVE BEARING	1	1		
3	E22 T20 702	DRAIN HOSE	1	1		
4	E22 F76 235	NOZZLE ASSEMBLY	1	1		FULL ASSEMBLY EXCEPT DRAIN HOSE
5	E22 F76 040	VANE (UPPER)	1	1		Includes SHAFTS
6	E22 F76 041	VANE (LOWER)	1	1		Includes SHAFTS
7	E22 C33 303	VANE MOTOR (HORIZONTAL)	1	1	MV1	UP & DOWN
8	E22 C32 303	VANE MOTOR (VERTICAL)	2	2	MV2	RIGHT & LEFT
9	E22 F28 541	WATER CUT	1	1		
10	E22 C32 308	ROOM TEMPERATURE THERMISTOR	1	1	RT11	
11	E22 F76 979	CONDUIT COVER	1	1		
12	E22 F76 978	CONDUIT PLATE	1	1		
13	E22 F28 468	POWER MONITOR RECEIVER SW P.C. BOARD	1	1		
14	E22 F28 095	POWER MONITOR RECEIVER HOLDER	1	1		
15	E22 94A 452	ELECTRONIC CONTROL P.C. BOARD	1			Includes TERMINAL P.C. BOARD with TERMINAL BLOCK
15	E22 T17 452	ELECTRONIC CONTROL P.C. BOARD		1		Includes TERMINAL P.C. BOARD with TERMINAL BLOCK
16	E22 F28 307	INDOOR COIL THERMISTOR	1	1	RT12, RT13	
17	E22 B75 385	VARISTOR	1	1	NR11	
18	E22 A49 382	FUSE	1	1	F11	T3.15AL250V
19	E22 F76 784	V.A. CLAMP	1	1		
20	E22 F28 300	INDOOR FAN MOTOR	1	1	MF	RC0J56-□□, Includes FAN MOTOR RUBBER MOUNT (2 PCS/SET)
21	E22 F28 333	MOTOR BAND	1	1		
22	E22 F28 302	LINE FLOW FAN	1	1		
23	—	DRAIN CAP	1	1		SU26R611H01
(24)	E22 82F 303	VERTICAL VANE MOTOR UNIT L	1	1		Includes MV2 with CLANK, LINK
(25)	E22 84F 303	VERTICAL VANE MOTOR UNIT R	1	1		Includes MV2 with CLANK, LINK

1-16. INDOOR UNIT HEAT EXCHANGER

1. The part quantity below indicates the required number of pieces per unit.

No.	Part No.	Part name	NTXWST24A112AA	NTYWST24A112AA	Symbol in Wiring Diagram	Remarks
26	E22 36E 620	INDOOR HEAT EXCHANGER	1	1		
27	E22 527 666	UNION (GAS)	1	1		ø5/8 (ø15.88)
28	E22 815 666	UNION (LIQUID)	1	1		ø3/8 (ø9.52)

1-17. AIR CLEANING FILTER

Every 3 months:

- Remove dirt by a vacuum cleaner.

When dirt cannot be removed by vacuum cleaning:

- Soak the filter and its frame in lukewarm water before rinsing it.
- After washing, dry it well in shade.

Every year:

- Replace it with a new air cleaning filter for best performance.

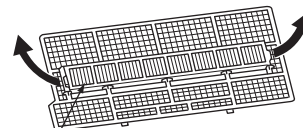
NOTE 1: Clean the filters regularly for best performance and to reduce power consumption.

NOTE 2: Dirty filters cause condensation in the air conditioner which will contribute to the growth of fungi such as mold. It is therefore recommended to clean air filters every 2 weeks.

(ANTI-ALLERGY ENZYME FILTER)

Model		Part No.
NTXWST06A112AA	NTXWST06A112AB	MAC-408FT-E
NTXWST09A112AA	NTXWST09A112AB	
NTXWST12A112AA	NTXWST12A112AB	
NTXWST15A112AA	NTXWST15A112AB	
NTXWST18A112AA		
NTYWST09A112AA	NTYWST09A112AB	
NTYWST12A112AA	NTYWST12A112AB	
NTYWST15A112AA	NTYWST15A112AB	
NTYWST18A112AA		

Pull to remove from the air filter



Air cleaning filter
(Blue bellows type)

(ELECTROSTATIC ANTI-ALLERGY ENZYME FILTER)

Model		Part No.
NTXWST24A112AA		MAC-2310FT-E
NTYWST24A112AA		

MITSUBISHI ELECTRIC TRANE HVAC US LLC

HEAD OFFICE: 1340 SATELLITE BOULEVARD, SUWANEE, GA 30024, USA

© Copyright 2018 MITSUBISHI ELECTRIC CORPORATION

Issued: Mar. 2022. No. OBBT732 REVISED EDITION-A

Published: Dec. 2018. No. OBBT732

Made in Japan

Specifications are subject to change without notice.