

SPLIT-TYPE AIR CONDITIONERS

OUTDOOR UNIT

Revision A:

• MUZ-WR09/12/18NA-U2 have been added.

OBB819 is void.

No. OBB819
REVISED EDITION-A

PARTS CATALOG

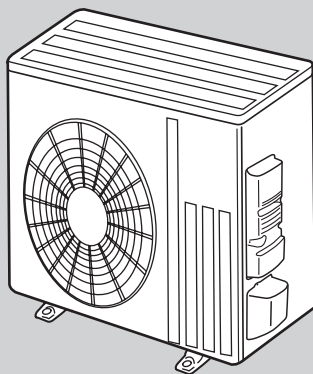
Models

MUZ-WR09NA - U1 , U2

MUZ-WR12NA - U1 , U2

MUZ-WR18NA - U1 , U2

MUZ-WR24NA - U1



MUZ-WR24NA

CONTENTS

1. SERVICE PARTS LIST	2
2. OPTIONAL PARTS	8

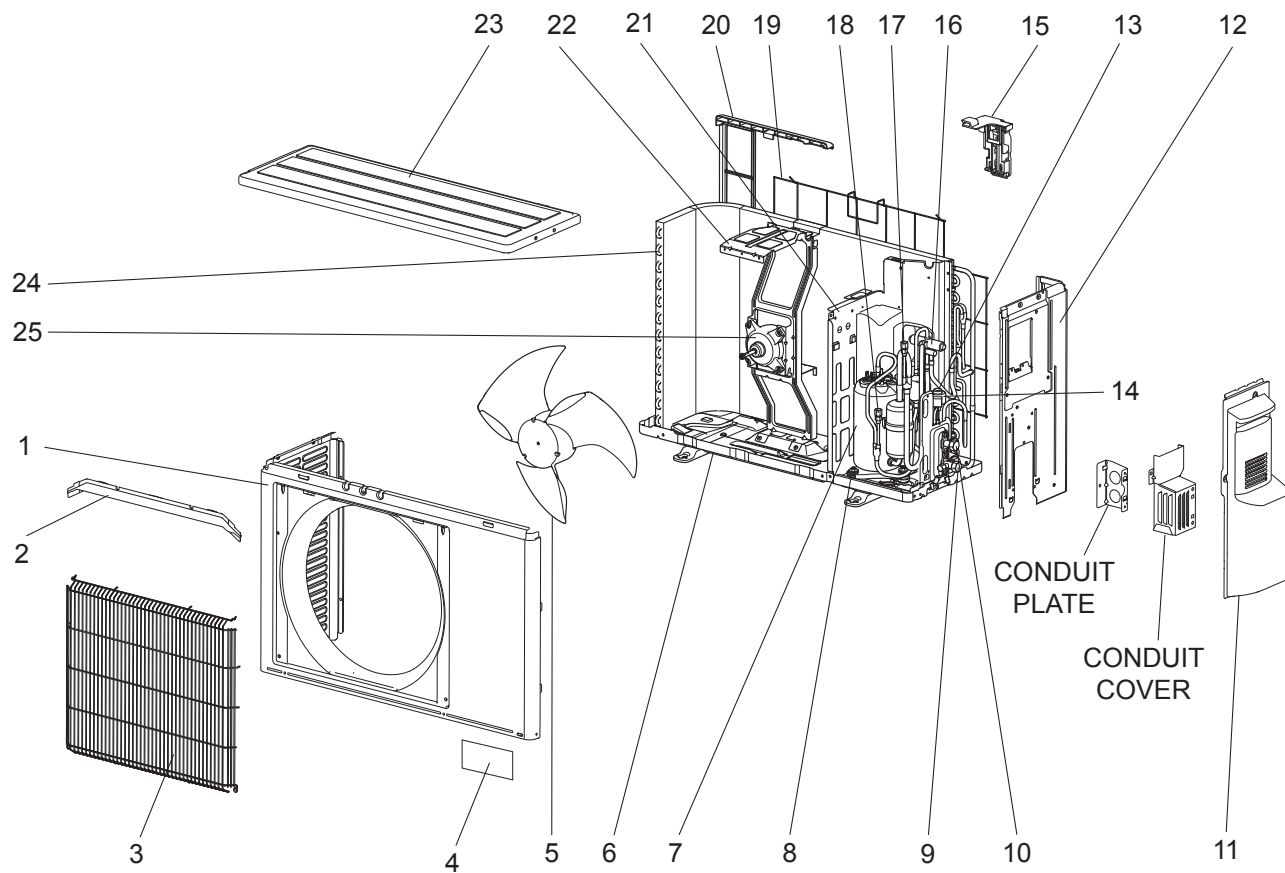
SERVICE MANUAL (OBH819)

Revision A:

• MUZ-WR09/12/18NA-**U2** have been added.

1**SERVICE PARTS LIST**

MUZ-WR09NA-U1**, **U2** MUZ-WR12NA-**U1**, **U2** MUZ-WR18NA-**U1**, **U2****

1-1. OUTDOOR UNIT STRUCTURAL PARTS AND FUNCTIONAL PARTS

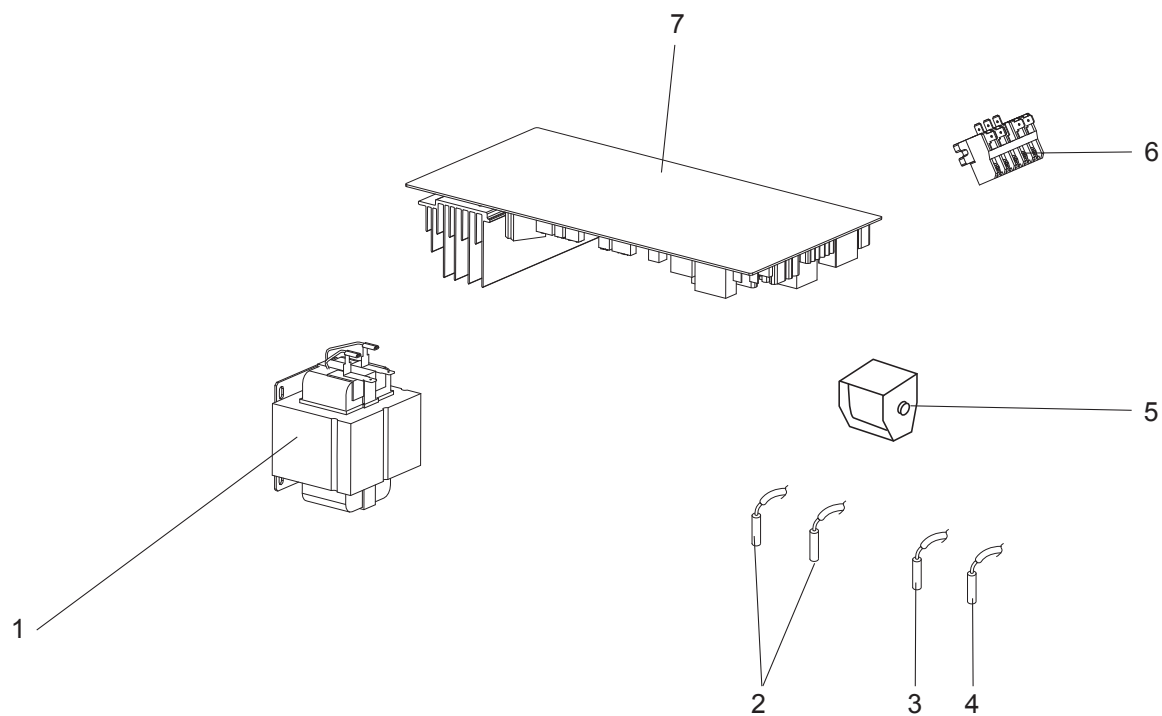
1-1. OUTDOOR UNIT STRUCTURAL PARTS AND FUNCTIONAL PARTS

Part number that is circled is not shown in the illustration.

No.	Parts No.	Parts Name	Symbol in Wiring Diagram	U1 MUZ-WR09NA-	U2 MUZ-WR09NA-	U1 MUZ-WR12NA-	U2 MUZ-WR12NA-	U1 MUZ-WR18NA-	U2 MUZ-WR18NA-	Remarks
1	U01 A01 232	CABINET		1	1	1	1	1	1	
2	U01 A01 531	ICE GUARD		1	1	1	1	1	1	
3	U01 A01 521	GRILLE		1	1	1	1	1	1	
4	U01 M01 987	LOGO LABEL (MITSUBISHI)		1	1	1	1	1	1	
5	U01 A01 501	PROPELLER FAN		1	1	1	1	1	1	
6	U01 A02 290	BASE		1	1	1	1	1	1	
7	U01 A03 900	COMPRESSOR	MC	1		1				KNB073FRVMC
7	U01 A07 900	COMPRESSOR	MC		1		1			KNB073FRXMC
7	U01 A04 900	COMPRESSOR	MC					1	1	SNB130FQBMT
8	U01 A01 506	COMP. RUBBER SET		3	3	3	3	3	3	3RUBBERS/SET
9	U01 A01 661	STOP VALVE (GAS)		1	1	1	1			ø3/8 (ø9.52)
9	U01 A02 661	STOP VALVE (GAS)						1	1	ø1/2 (ø12.7)
10	U01 A01 662	STOP VALVE (LIQUID)		1	1	1	1	1	1	ø1/4 (ø6.35)
11	U01 A01 245	SERVICE PANEL		1	1	1	1	1	1	
12	U01 A01 233	BACK PANEL		1	1	1	1	1	1	
13	U01 A01 640	EXPANSION VALVE		1		1		1		
13	U01 001 401	EXPANSION VALVE			1		1		1	
14	U01 A01 493	EXPANSION VALVE COIL	LEV	1	1	1	1	1	1	
15	U01 A03 079	THERMO HOLDER		1	1	1	1			
15	U01 A02 079	THERMO HOLDER						1	1	
16	U01 A03 961	4-WAY VALVE		1		1				
16	U01 A04 961	4-WAY VALVE			1		1			
16	U01 A01 961	4-WAY VALVE						1	1	
17	U01 A01 641	SERVICE PORT (L)		1	1	1	1	1	1	1PC/SET
18	U01 A02 641	SERVICE PORT (H)		1	1	1	1	1	1	
19	U01 A02 525	CONDENSER WIRE NET		1	1	1	1			
19	U01 A01 525	CONDENSER WIRE NET						1	1	
20	U01 A03 525	CONDENSER NET		1	1	1	1			
20	U01 A01 523	CONDENSER NET						1	1	
21	U01 A03 293	SEPARATOR		1		1				
21	U01 A06 293	SEPARATOR			1		1			
21	U01 A02 293	SEPARATOR						1		
21	U01 A08 293	SEPARATOR							1	
22	U01 A02 515	MOTOR SUPPORT		1	1	1	1			
22	U01 A01 515	MOTOR SUPPORT						1	1	
23	U01 A01 297	TOP PANEL		1	1	1	1	1	1	
24	U01 A02 630	OUTDOOR HEAT EXCHANGER		1		1				1 row
24	U01 A06 630	OUTDOOR HEAT EXCHANGER			1		1			1 row
24	U01 A01 630	OUTDOOR HEAT EXCHANGER						1	1	2 rows
25	U01 A01 301	OUTDOOR FAN MOTOR	MF	1		1		1		RC0J55-□□
25	U01 A03 301	OUTDOOR FAN MOTOR	MF		1		1		1	RC0J55-□□
②⑥	U01 A05 936	CAPILLARY TUBE		1	1	1	1			O.D. 0.118 × I.D. 0.055 × 10-1/4 (ø3.0 × ø1.4 × 260)
②⑥	U01 A01 936	CAPILLARY TUBE						4	4	O.D. 0.118 × I.D. 0.079 × 8-9/32 (ø3.0 × ø2.0 × 210)
②⑥	U01 A02 936	CAPILLARY TUBE						1	1	O.D. 0.157 × I.D. 0.094 × 9-7/16 (ø4.0 × ø2.4 × 240)

MUZ-WR09NA- U1 , U2 MUZ-WR12NA- U1 , U2 MUZ-WR18NA- U1 , U2

1-2. OUTDOOR UNIT ELECTRICAL PARTS

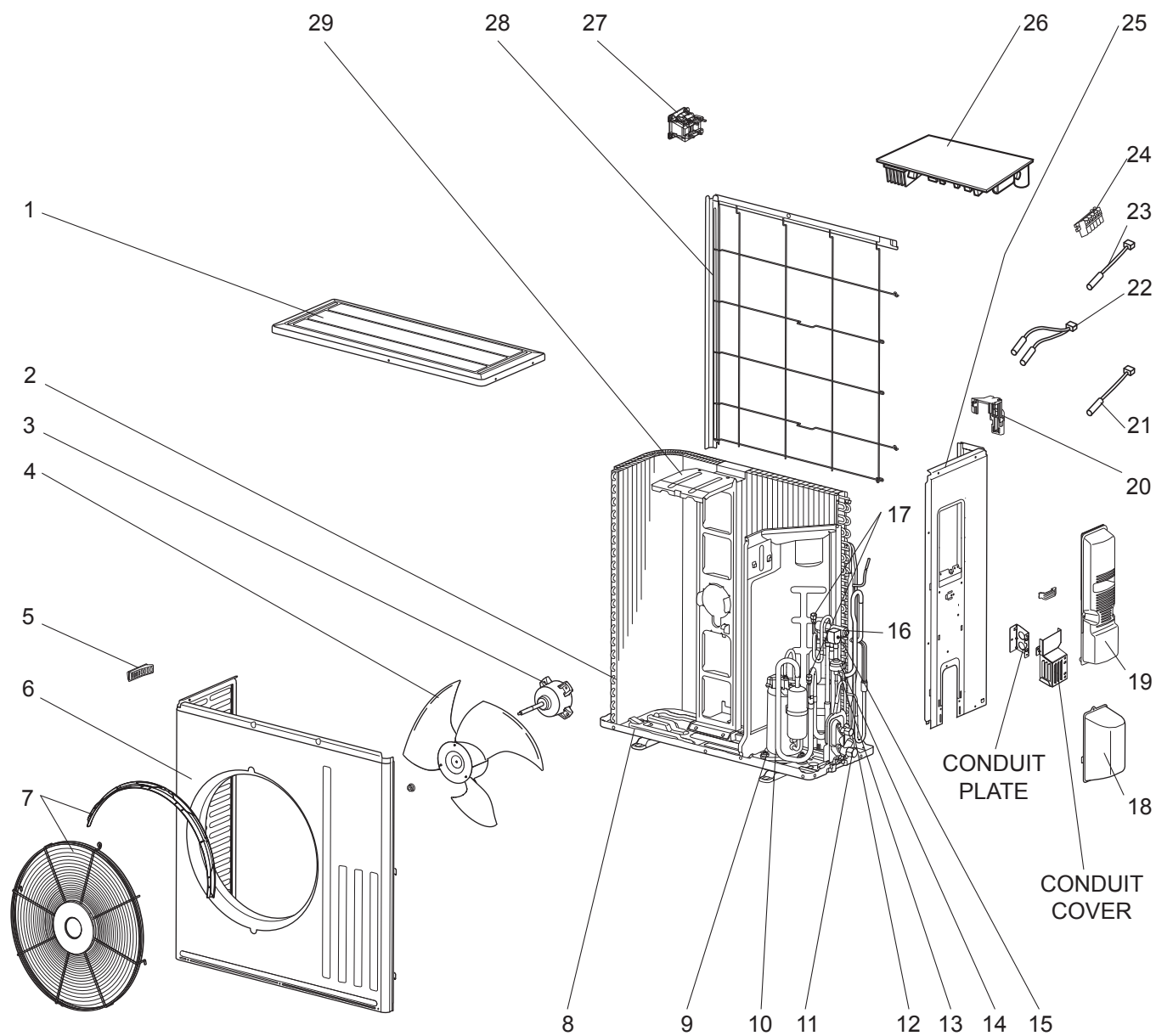


1-2. OUTDOOR UNIT ELECTRICAL PARTS

No.	Part No.	Part name	Symbol in Wiring Diagram	U1	U2	U1	U2	U1	U2	Remarks
				MUZ-WR09NA-	MUZ-WR09NA-	MUZ-WR12NA-	MUZ-WR12NA-	MUZ-WR18NA-	MUZ-WR18NA-	
1	U01 A02 337	REACTOR	L61	1	1	1	1			
1	U01 A01 337	REACTOR	L61					1	1	
2	U01 A01 306	THERMISTOR SET	RT61, RT62	1	1	1	1	1	1	DEFROST, DISCHARGE
3	U01 A03 308	AMBIENT TEMPERATURE THERMISTOR	RT65	1	1	1	1	1	1	
4	U01 A02 307	OUTDOOR HEAT EXCHANGER TEMPERATURE THERMISTOR	RT68	1		1		1	1	
4	U01 A05 307	OUTDOOR HEAT EXCHANGER TEMPERATURE THERMISTOR	RT68		1		1			
5	U01 A01 490	R.V. COIL	21S4	1		1		1	1	
5	U01 A03 490	R.V. COIL	21S4		1		1			
6	U01 A01 374	TERMINAL BLOCK	TB	1	1	1	1	1	1	5P
7	U01 A23 451	INVERTER P.C. BOARD		1						Includes heat sink and RT64
7	U01 A36 451	INVERTER P.C. BOARD			1					Includes heat sink and RT64
7	U01 A24 451	INVERTER P.C. BOARD				1				Includes heat sink and RT64
7	U01 A37 451	INVERTER P.C. BOARD					1			Includes heat sink and RT64
7	U01 A17 451	INVERTER P.C. BOARD						1		Includes heat sink and RT64
7	U01 A39 451	INVERTER P.C. BOARD							1	Includes heat sink and RT64

MUZ-WR24NA

1-3. OUTDOOR UNIT STRUCTURAL PARTS, ELECTRICAL PARTS AND FUNCTIONAL PARTS



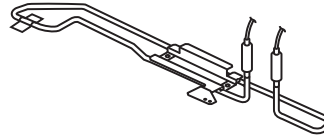
1-3. OUTDOOR UNIT STRUCTURAL PARTS, ELECTRICAL PARTS AND FUNCTIONAL PARTS

Part numbers that are circled are not shown in the illustration.

No.	Parts No.	Parts Name	Symbol in Wiring Diagram	MUZ-WR24NA- U1	Remarks
1	E22 L87 297	TOP PANEL		1	
2	E22 N94 630	OUTDOOR HEAT EXCHANGER		1	
3	E22 N87 301	OUTDOOR FAN MOTOR	MF	1	RC0J77-□□
4	E22 F28 501	PROPELLER FAN		1	
5	E22 817 009	HANDLE		1	
6	E22 N94 232	CABINET		1	
7	E22 L87 521	FAN GUARD		1	Includes ice guard
8	E22 F28 290	BASE		1	
9	E22 C34 506	COMPRESSOR RUBBER SET		3	3 RUBBERS/SET
10	E22 N94 900	COMPRESSOR	MC	1	SNB130FQBMT
11	E22 F76 661	STOP VALVE (GAS)		1	ø5/8 (ø15.88)
12	E22 F29 662	STOP VALVE (LIQUID)		1	ø3/8 (ø9.52)
13	E22 851 640	EXPANSION VALVE		1	
14	E22 F28 493	EXPANSION VALVE COIL	LEV	1	
15	E22 N91 490	R.V. COIL	21S4	1	
16	E22 A56 961	4-WAY VALVE		1	
17	E22 E79 641	SERVICE PORT		2	
18	E22 F28 650	VALVE COVER		1	
19	E22 N94 245	SERVICE PANEL		1	
20	E22 F28 079	THERMO HOLDER		1	
21	E22 G16 309	AMBIENT TEMPERATURE THERMISTOR	RT65	1	
22	E22 G16 308	THERMISTOR SET	RT61, RT62	1	DEFROST, DISCHARGE TEMPERATURE
23	E22 G16 307	OUTDOOR HEAT EXCHANGER TEMPERATURE THERMISTOR	RT68	1	
24	E22 L85 374	TERMINAL BLOCK	TB	1	5 P
25	E22 N94 233	BACK PANEL (OUT)		1	
26	E22 N93 451	INVERTER P.C. BOARD		1	Includes heat sink and RT64
27	E22 N94 337	REACTOR	L61	1	
28	E22 L87 523	CONDENSER NET		1	
29	E22 F28 515	MOTOR SUPPORT		1	
③⑩	E22 262 936	CAPILLARY TUBE		1	O.D. 0.157 × I.D. 0.094 × 7-7/8 (ø4.0 × ø2.4 × 200)
③①	E22 838 936	CAPILLARY TUBE		4	O.D. 0.118 × I.D. 0.079 × 7-7/8 (ø3.0 × ø2.0 × 200)
③②	E22 527 936	CAPILLARY TUBE		1	O.D. 0.157 × I.D. 0.094 × 3-15/16 (ø4.0 × ø2.4 × 100)

2-1. DEFROST HEATER

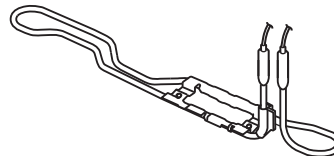
Model	Parts No.
MUZ-WR09NA MUZ-WR12NA MUZ-WR18NA	MAC-640BH-U



Components

① Defrost heater	1	④ Cable tie	1
② Aluminum tape	1	⑤ Self drilling screw	2
③ Heater support	1	⑥ Insulation	1

Model	Parts No.
MUZ-WR24NA	MAC-642BH-U1



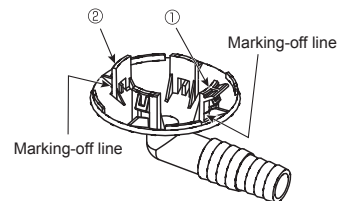
Components

① Defrost heater	1	④ Cable clamp	1
② Heater support	1	⑤ Self drilling screw	2
③ Cable tie	1	⑥ Wiring diagram	1

Note: Refer to the installation manual for the installation.

2-2. DRAIN SOCKET

Model	Parts No.
MUZ-WR09NA MUZ-WR12NA MUZ-WR18NA MUZ-WR24NA	MAC-860DS



Installing a Drain Socket

For $\Phi 1-5/8$ ($\Phi 42$) hole

Put the tab ① in the hole first, and then the tab ②.

MITSUBISHI ELECTRIC CORPORATION

HEAD OFFICE: TOKYO BUILDING, 2-7-3, MARUNOUCHI, CHIYODA-KU, TOKYO 100-8310, JAPAN

© Copyright 2018 MITSUBISHI ELECTRIC CORPORATION

Issued: Aug. 2019. No. OBB819 REVISED EDITION-A

Published: Sep. 2018. No. OBB819

Made in Japan

Specifications are subject to change without notice.