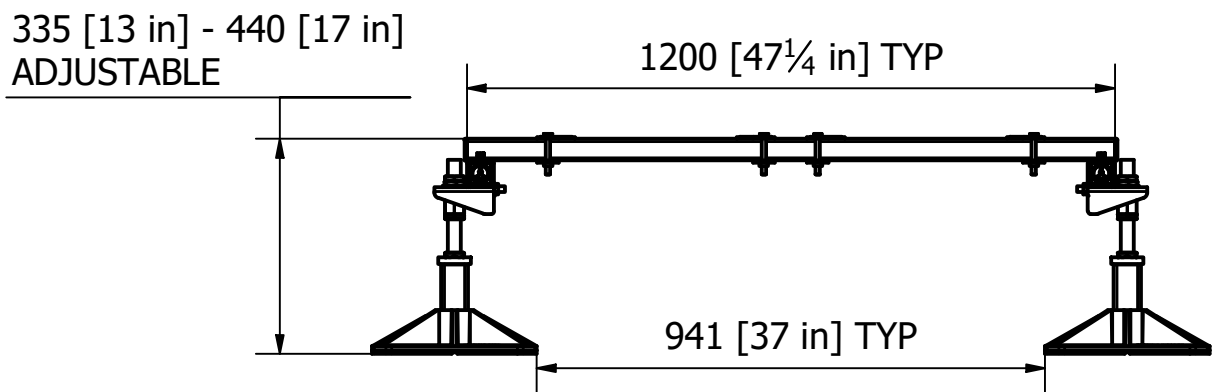
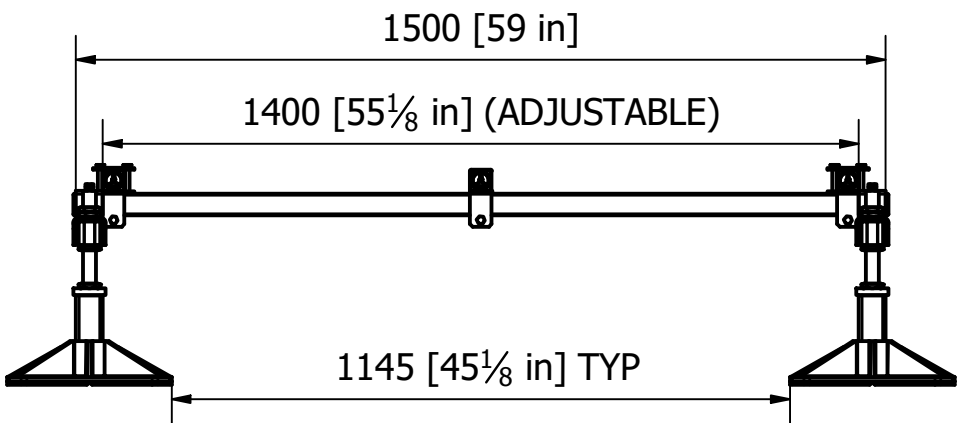
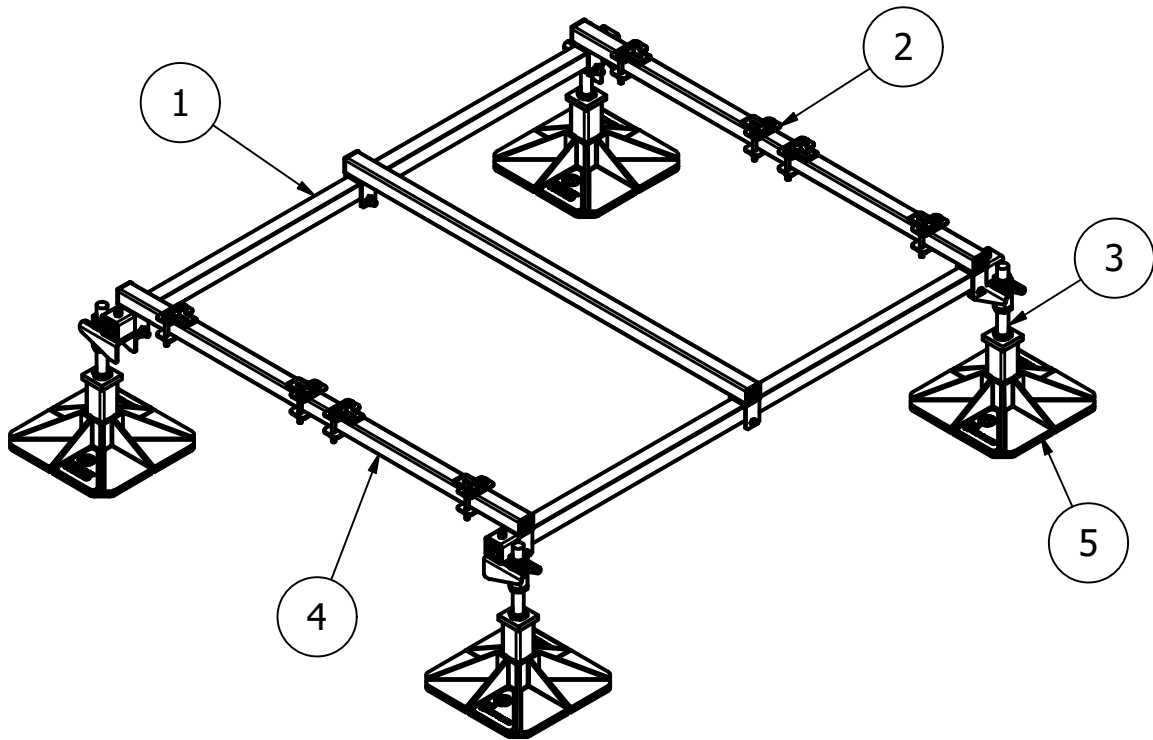
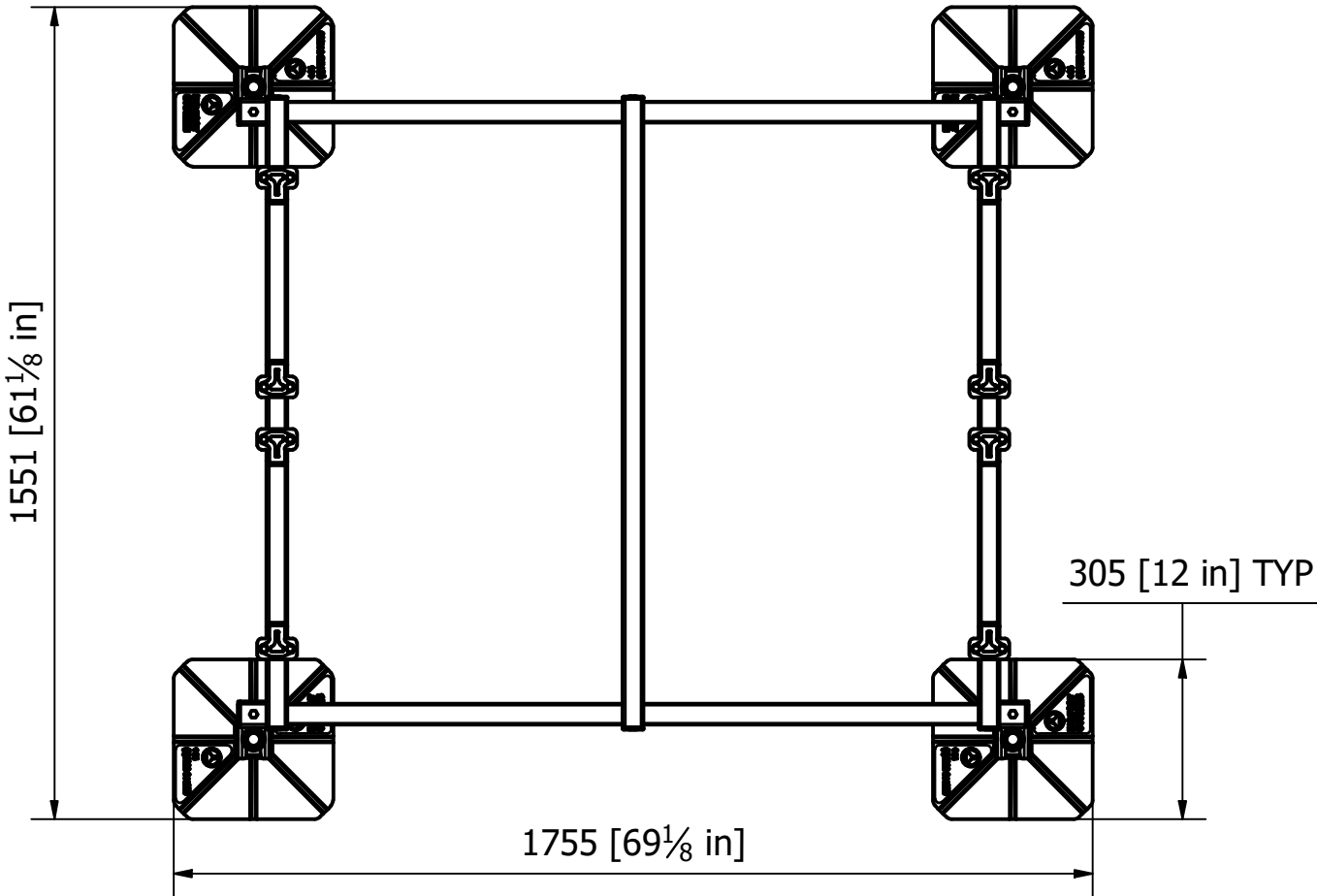


PROJECT REF:	B9720/1 - MULTI FRAME XL
UNIT REF:	
FOOT PRESSURE:	
UDL:	

Material grade: BS EN 10219-1:2006 (S235JR). Welding standard: BS EN ISO 15614-1: 2016. Galvanizing standard: BS EN ISO 1461:2009
Reference specification document "Custom Fabrication Specification" (BF-SPEC-050411) for further information
Reference specification document "Big Foot Systems Steel Specification (BF-SPEC-230610) for further information

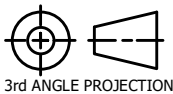
PARTS LIST			
ITEM	QTY	PART NUMBER	DESCRIPTION
1	2	B6071	1.5m 40x40 END BAR
2	2	B6083	40x40 CLAMP KIT
3	4	B6881	LD STD METAL PACK
4	3	B9662	MULTI FRAME CROSS BAR
5	4	B9668	305mm FOOT + MAT



Installation and application considerations should include health, safety and environmental needs, regulations and standards, codes of practice, climate conditions, installation location, product orientation, evaluation of the roof structure, composition, surface and condition, ancillary and complimentary products and materials. Big Foot Systems recommend that all rooftop products are handled and installed by suitably qualified persons. All scheme designs are based on the use of Big Foot Systems' products and materials only. Terms and conditions available on request

REV
A

DATE:	11/02/2022
DRAWN:	E.OLUWAROUNKE
CHECKED:	S.BIRCH



3rd ANGLE PROJECTION

SCALE: 1 : 14

DIMENSIONS IN mm U.O.S

TOLERANCES: 0.0 ± 0.5mm U.O.S

SHEET 1 OF 1

A3

TITLE:
B9731 - MULTI FRAME XL

DWG No.

B9731.dwg

THIS DRAWING IS COPYRIGHT AND
THE PROPERTY OF BIG FOOT SYSTEMS LIMITED

