



P-SERIES

Air Conditioners

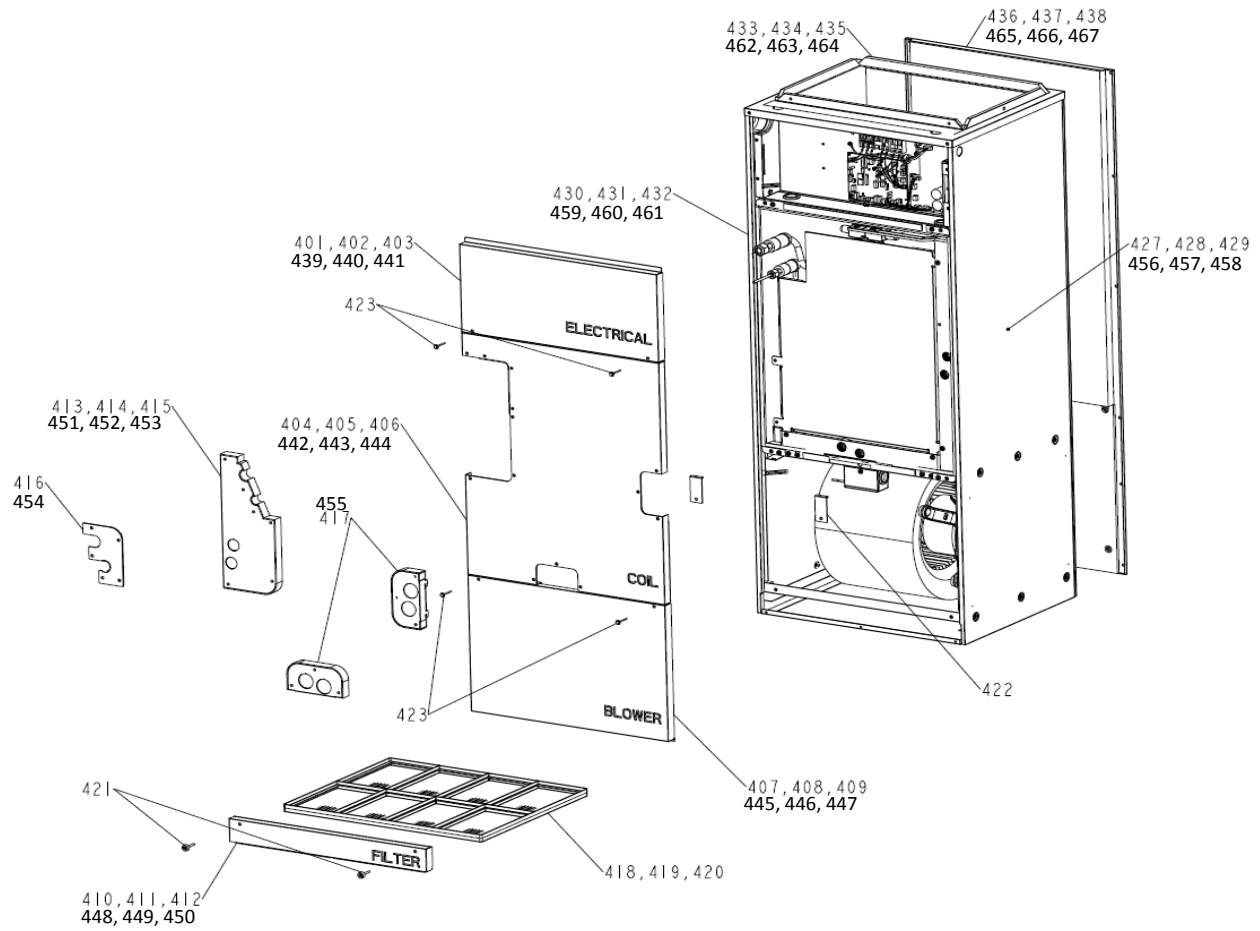
PVA-A12, 18, 24, 30, 36, 42AA7

SERVICE PARTS MANUAL

Table of Contents

- 1. EXTERNAL PARTS 5
- 2. HEX ASSEMBLY PARTS 7
- 3. BLOWER PARTS 9
- 4. CONTROL BOX PARTS 11

1. EXTERNAL PARTS



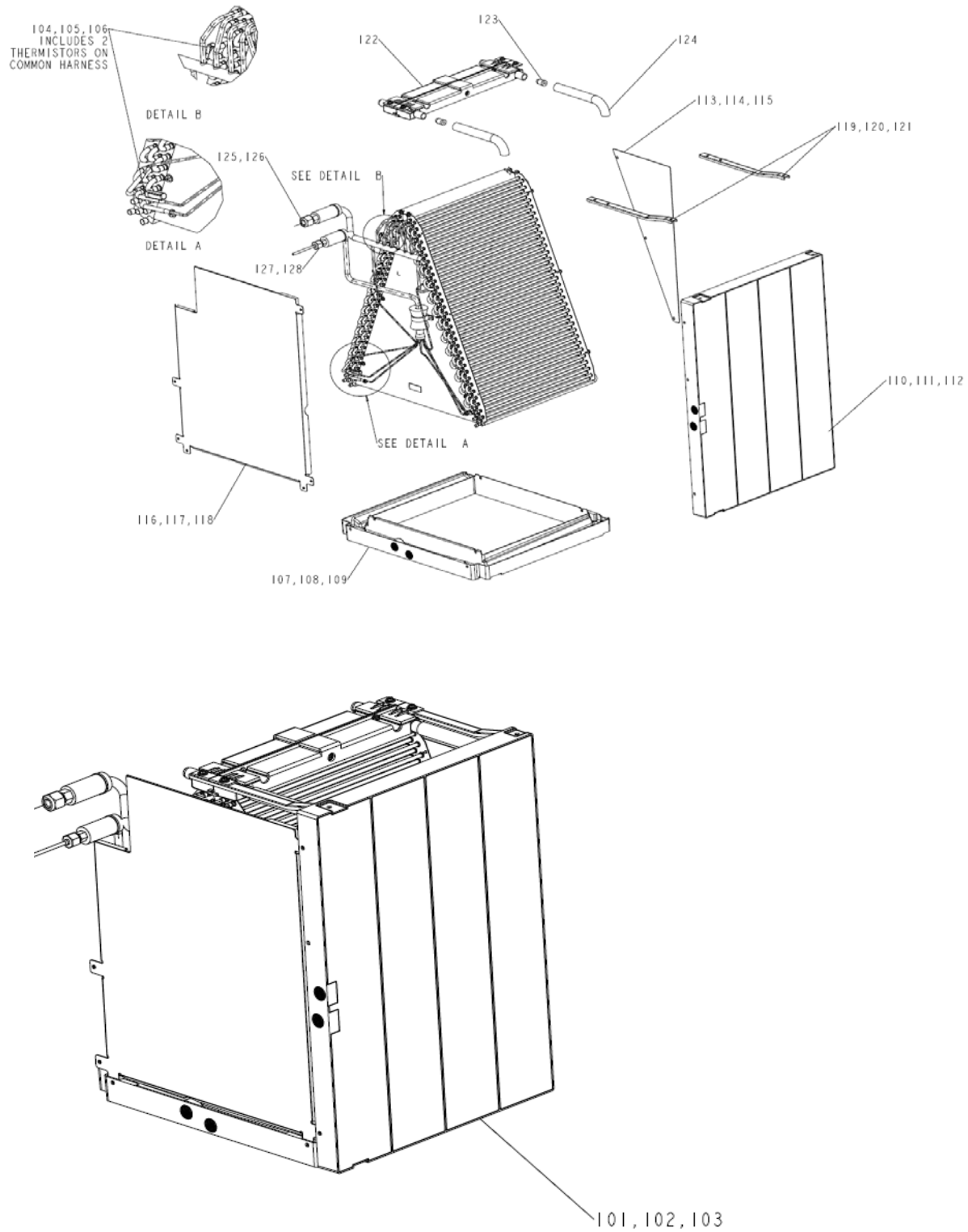
PVA-A12, 18, 24, 30, 36, 42AA7

| No. | Part No. | Part Name | Spec. | PVA-A12AA7 | PVA-A18AA7 | PVA-A24AA7 | PVA-A30AA7 | PVA-A36AA7 | PVA-A42AA7 | PVA-A12AA7-1 | PVA-A18AA7-1 | PVA-A24AA7-1 | PVA-A30AA7-1 | PVA-A36AA7-1 | PVA-A42AA7-1 | Dwg. No. | Notes for models | Revision info. |
|-----|-------------|--------------------------|-------|------------|------------|------------|------------|------------|------------|--------------|--------------|--------------|--------------|--------------|--------------|-------------|------------------|----------------|
| 401 | U41 001 638 | FRONT PANEL ELECTRICAL S | | 1 | 1 | | | | | | | | | | | PA00C545G01 | | |
| 402 | U41 002 638 | FRONT PANEL ELECTRICAL M | | | | 1 | 1 | | | | | | | | | PA00C545G02 | | |
| 403 | U41 003 638 | FRONT PANEL ELECTRICAL L | | | | | | 1 | 1 | | | | | | | PA00C545G03 | | |
| 404 | U41 001 639 | FRONT PANEL HEX S | | 1 | 1 | | | | | | | | | | | PA00B097G01 | | |
| 405 | U41 002 639 | FRONT PANEL HEX M | | | | 1 | 1 | | | | | | | | | PA00B097G02 | | |
| 406 | U41 003 639 | FRONT PANEL HEX L | | | | | | 1 | 1 | | | | | | | PA00B097G03 | | |
| 407 | U41 001 637 | FRONT PANEL BLOWER S | | 1 | 1 | | | | | | | | | | | PA00C541G01 | | |
| 408 | U41 002 637 | FRONT PANEL BLOWER M | | | | 1 | 1 | | | | | | | | | PA00C541G02 | | |
| 409 | U41 003 637 | FRONT PANEL BLOWER L | | | | | | 1 | 1 | | | | | | | PA00C541G03 | | |
| 410 | U41 001 636 | FRONT PANEL FILTER S | | 1 | 1 | | | | | | | | | | | PA00C251G01 | | |
| 411 | U41 002 636 | FRONT PANEL FILTER M | | | | 1 | 1 | | | | | | | | | PA00C251G02 | | |
| 412 | U41 003 636 | FRONT PANEL FILTER L | | | | | | 1 | 1 | | | | | | | PA00C251G03 | | |
| 413 | U41 001 635 | PIPE/DRAIN PANEL S | | 1 | 1 | | | | | | | | | | | PA00C236G01 | | |
| 414 | U41 002 635 | PIPE/DRAIN PANEL M | | | | 1 | 1 | | | | | | | | | PA00C236G02 | | |
| 415 | U41 003 635 | PIPE/DRAIN PANEL L | | | | | | 1 | 1 | | | | | | | PA00C236G03 | | |
| 416 | U41 004 635 | PIPE PANEL | | 1 | 1 | 1 | 1 | 1 | 1 | | | | | | | PA00D164G01 | | |
| 417 | U41 005 635 | DRAIN PANEL | | 2 | 2 | 2 | 2 | 2 | 2 | | | | | | | PA00D162G01 | | |
| 418 | U41 004 500 | FILTER-PLASTIC S | | 1 | 1 | | | | | 1 | 1 | | | | | PA35B051G01 | 16X20 | |
| 419 | U41 005 500 | FILTER-PLASTIC M | | | | 1 | 1 | | | | | 1 | 1 | | | PA35B052G01 | 20X20 | |
| 420 | U41 006 500 | FILTER-PLASTIC L | | | | | | 1 | 1 | | | | | 1 | 1 | PA35B053G01 | 24X20 | |
| 421 | U41 001 087 | PLASTIC THUMBSCREW | | 2 | 2 | 2 | 2 | 2 | 2 | 2 | 2 | 2 | 2 | 2 | 2 | PA12D179H01 | MSX35 | |
| 422 | U41 001 086 | COIL BRACKET | | 1 | 1 | 2 | 2 | 2 | 2 | 1 | 1 | 2 | 2 | 2 | 2 | PA00D163G01 | | |
| 423 | U41 002 087 | SCREW MSX40 | | | | 4 | 4 | 4 | | | | | 4 | 4 | 4 | PA12D177H01 | | |
| 427 | U41 003 642 | CABINET RIGHT S | | 1 | 1 | | | | | | | | | | | PA00C557G01 | * | |
| 428 | U41 002 642 | CABINET RIGHT M | | | | 1 | 1 | | | | | | | | | PA00C557G02 | * | |
| 429 | U41 001 642 | CABINET RIGHT L | | | | | | 1 | 1 | | | | | | | PA00C557G03 | * | |
| 430 | U41 003 641 | CABINET LEFT S | | 1 | 1 | | | | | | | | | | | PA00C558G01 | ** | |
| 431 | U41 002 641 | CABINET LEFT M | | | | 1 | 1 | | | | | | | | | PA00C558G02 | ** | |
| 432 | U41 001 641 | CABINET LEFT L | | | | | | 1 | 1 | | | | | | | PA00C558G03 | ** | |
| 433 | U41 003 643 | TOP PANEL S | | 1 | 1 | | | | | | | | | | | PA00B096G01 | | |
| 434 | U41 002 643 | TOP PANEL M | | | | 1 | 1 | | | | | | | | | PA00B096G02 | | |
| 435 | U41 001 643 | TOP PANEL L | | | | | | 1 | 1 | | | | | | | PA00B096G03 | | |
| 436 | U41 003 640 | CABINET BACK S | | 1 | 1 | | | | | | | | | | | PA00C556G01 | | |
| 437 | U41 002 640 | CABINET BACK M | | | | 1 | 1 | | | | | | | | | PA00C556G02 | | |
| 438 | U41 001 640 | CABINET BACK L | | | | | | 1 | 1 | | | | | | | PA00C556G03 | | |
| 439 | U41 B01 638 | FRONT PANEL ELECTRICAL S | | | | | | | 1 | 1 | | | | | | PA00C545G04 | Black ZAM | |
| 440 | U41 B02 638 | FRONT PANEL ELECTRICAL M | | | | | | | | | 1 | 1 | | | | PA00C545G05 | Black ZAM | |
| 441 | U41 B03 638 | FRONT PANEL ELECTRICAL L | | | | | | | | | | | 1 | 1 | | PA00C545G06 | Black ZAM | |
| 442 | U41 B01 639 | FRONT PANEL HEX S | | | | | | | 1 | 1 | | | | | | PA00B097G04 | Black ZAM | |
| 443 | U41 B02 639 | FRONT PANEL HEX M | | | | | | | | | 1 | 1 | | | | PA00B097G05 | Black ZAM | |
| 444 | U41 B03 639 | FRONT PANEL HEX L | | | | | | | | | | | 1 | 1 | | PA00B097G06 | Black ZAM | |
| 445 | U41 B01 637 | FRONT PANEL BLOWER S | | | | | | | 1 | 1 | | | | | | PA00C541G04 | Black ZAM | |
| 446 | U41 B02 637 | FRONT PANEL BLOWER M | | | | | | | | | 1 | 1 | | | | PA00C541G05 | Black ZAM | |
| 447 | U41 B03 637 | FRONT PANEL BLOWER L | | | | | | | | | | | 1 | 1 | | PA00C541G06 | Black ZAM | |
| 448 | U41 B01 636 | FRONT PANEL FILTER S | | | | | | | 1 | 1 | | | | | | PA00C251G04 | Black ZAM | |
| 449 | U41 B02 636 | FRONT PANEL FILTER M | | | | | | | | | 1 | 1 | | | | PA00C251G05 | Black ZAM | |
| 450 | U41 B03 636 | FRONT PANEL FILTER L | | | | | | | | | | | 1 | 1 | | PA00C251G06 | Black ZAM | |
| 451 | U41 B01 635 | PIPE/DRAIN PANEL S | | | | | | | 1 | 1 | | | | | | PA00C236G04 | Black ZAM | |
| 452 | U41 B02 635 | PIPE/DRAIN PANEL M | | | | | | | | | 1 | 1 | | | | PA00C236G05 | Black ZAM | |
| 453 | U41 B03 635 | PIPE/DRAIN PANEL L | | | | | | | | | | | 1 | 1 | | PA00C236G06 | Black ZAM | |
| 454 | U41 B04 635 | PIPE PANEL | | | | | | | 1 | 1 | 1 | 1 | 1 | 1 | 1 | PA00D164G02 | Black ZAM | |
| 455 | U41 B05 635 | DRAIN PANEL | | | | | | | 2 | 2 | 2 | 2 | 2 | 2 | 2 | PA00D162G02 | Black ZAM | |
| 456 | U41 B03 642 | CABINET RIGHT S | | | | | | | 1 | 1 | | | | | | PA00C557G04 | Black ZAM * | |
| 457 | U41 B02 642 | CABINET RIGHT M | | | | | | | | | 1 | 1 | | | | PA00C557G05 | Black ZAM * | |
| 458 | U41 B01 642 | CABINET RIGHT L | | | | | | | | | | | 1 | 1 | | PA00C557G06 | Black ZAM * | |
| 459 | U41 B03 641 | CABINET LEFT S | | | | | | | 1 | 1 | | | | | | PA00C558G04 | Black ZAM ** | |
| 460 | U41 B02 641 | CABINET LEFT M | | | | | | | | | 1 | 1 | | | | PA00C558G05 | Black ZAM ** | |
| 461 | U41 B01 641 | CABINET LEFT L | | | | | | | | | | | 1 | 1 | | PA00C558G06 | Black ZAM ** | |
| 462 | U41 B03 643 | TOP PANEL S | | | | | | | 1 | 1 | | | | | | PA00B096G04 | Black ZAM | |
| 463 | U41 B02 643 | TOP PANEL M | | | | | | | | | 1 | 1 | | | | PA00B096G05 | Black ZAM | |
| 464 | U41 B01 643 | TOP PANEL L | | | | | | | | | | | 1 | 1 | | PA00B096G06 | Black ZAM | |
| 465 | U41 B03 640 | CABINET BACK S | | | | | | | 1 | 1 | | | | | | PA00C556G04 | Black ZAM | |
| 466 | U41 B02 640 | CABINET BACK M | | | | | | | | | 1 | 1 | | | | PA00C556G05 | Black ZAM | |
| 467 | U41 B01 640 | CABINET BACK L | | | | | | | | | | | 1 | 1 | | PA00C556G06 | Black ZAM | |

* The motor harness is pre-installed in the Cabinet Right panel.

** The return air thermistor harness is pre-installed in the Cabinet Left panel.

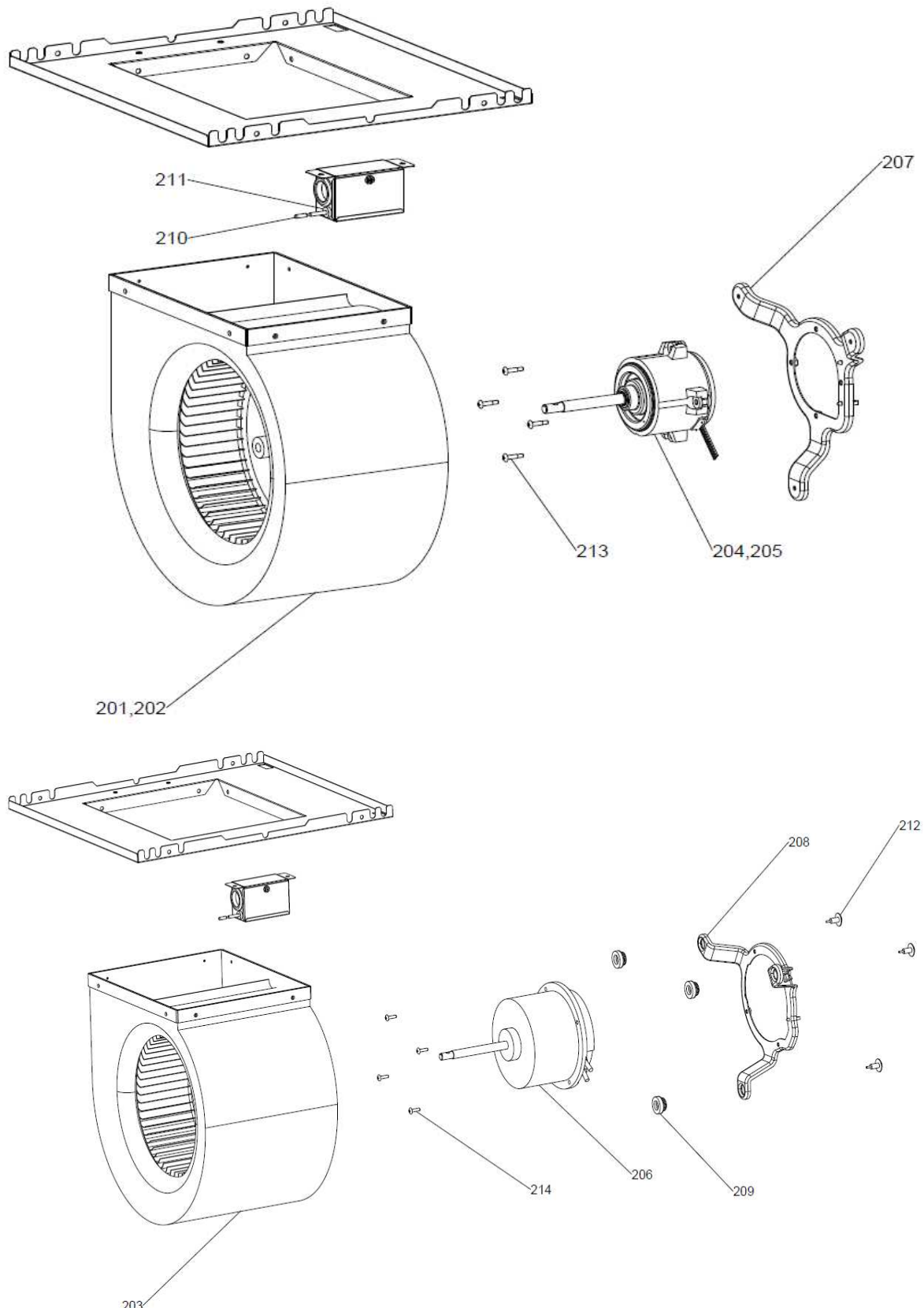
2. HEX ASSEMBLY PARTS



PVA-A12, 18, 24, 30, 36, 42AA7

| No. | Part No. | Part Name | Spec. | PVA-A12AA7 PVA-A12AA7-1 | PVA-A18AA7 PVA-A18AA7-1 | PVA-A24AA7 PVA-A24AA7-1 | PVA-A30AA7 PVA-A30AA7-1 | PVA-A36AA7 PVA-A36AA7-1 | PVA-A42AA7 PVA-A42AA7-1 | Dwg. No. | Notes for models | Revision info. |
|-----|-------------|------------------------|-------|----------------------------|----------------------------|----------------------------|----------------------------|----------------------------|----------------------------|-------------|------------------------|----------------|
| 101 | U41 018 480 | HEAT EXCHANGER A12 | | 1 | 1 | | | | | PA00B026B01 | Includes all hex parts | |
| 102 | U41 016 480 | HEAT EXCHANGER A30 | | | | 1 | 1 | | | PA00B101B01 | Includes all hex parts | |
| 103 | U41 017 480 | HEAT EXCHANGER A42 | | | | | | 1 | 1 | PA00B102B01 | Includes all hex parts | |
| 104 | U41 003 200 | THERMISTOR | | 1 | 1 | | | | | KB71B945H05 | | |
| 105 | U41 004 200 | THERMISTOR | | | | 1 | 1 | | | KB71B945H06 | | |
| 106 | U41 005 200 | THERMISTOR | | | | | | 1 | 1 | KB71B945H07 | | |
| 107 | U41 006 529 | DRAIN PAN ASSY LOWER S | | 1 | 1 | | | | | PA00B098G01 | | |
| 108 | U41 007 529 | DRAIN PAN ASSY LOWER M | | | | 1 | 1 | | | PA00B098G02 | | |
| 109 | U41 008 529 | DRAIN PAN ASSY LOWER L | | | | | | 1 | 1 | PA00B098G03 | | |
| 110 | U41 009 529 | DRAIN PAN ASSY SIDE S | | 1 | 1 | | | | | PA00C248G01 | | |
| 111 | U41 010 529 | DRAIN PAN ASSY SIDE M | | | | 1 | 1 | | | PA00C248G02 | | |
| 112 | U41 011 529 | DRAIN PAN ASSY SIDE L | | | | | | 1 | 1 | PA00C248G03 | | |
| 113 | U41 001 668 | PLATE GUIDE REAR S | | 1 | 1 | | | | | PA00D171G01 | | |
| 114 | U41 002 668 | PLATE GUIDE REAR M | | | | 1 | 1 | | | PA00D171G02 | | |
| 115 | U41 003 668 | PLATE GUIDE REAR L | | | | | | 1 | 1 | PA00D171G03 | | |
| 116 | U41 004 668 | PLATE GUIDE FRONT S | | 1 | 1 | | | | | PA00C242G01 | | |
| 117 | U41 005 668 | PLATE GUIDE FRONT M | | | | 1 | 1 | | | PA00C242G02 | | |
| 118 | U41 006 668 | PLATE GUIDE FRONT L | | | | | | 1 | 1 | PA00C242G03 | | |
| 119 | U41 001 662 | SIDE PAN BRACKET S | | 1 | 1 | | | | | PA02C077H01 | | |
| 120 | U41 002 662 | SIDE PAN BRACKET M | | | | 2 | 2 | | | PA02C078H01 | | |
| 121 | U41 003 662 | SIDE PAN BRACKET L | | | | | | 2 | 2 | PA02C079H01 | | |
| 122 | U41 012 529 | DRAIN PAN ASSY TOP | | 2 | 2 | 2 | 2 | 2 | 2 | PA00C279G01 | | |
| 123 | U41 002 558 | PLUG-TOP DRAIN PAN | | 4 | 4 | 4 | 4 | 4 | 4 | C126C778H17 | | |
| 124 | U41 001 525 | HOSE-TOP DRAIN PAN | | 2 | 2 | 2 | 2 | 2 | 2 | PA27D214H02 | | |
| 125 | U41 003 122 | NUT FLARE 1/2F | | 1 | 1 | | | | | BG12S008H02 | | |
| 126 | U41 001 122 | NUT FLARE 5/8 | | | | 1 | 1 | 1 | 1 | BG12S826H03 | | |
| 127 | U41 004 122 | NUT FLARE 1/4 | | 1 | 1 | | | | | Z211A143H01 | | |
| 128 | U41 002 122 | NUT FLARE 3/8 | | | | 1 | 1 | 1 | 1 | Z211A143H06 | | |

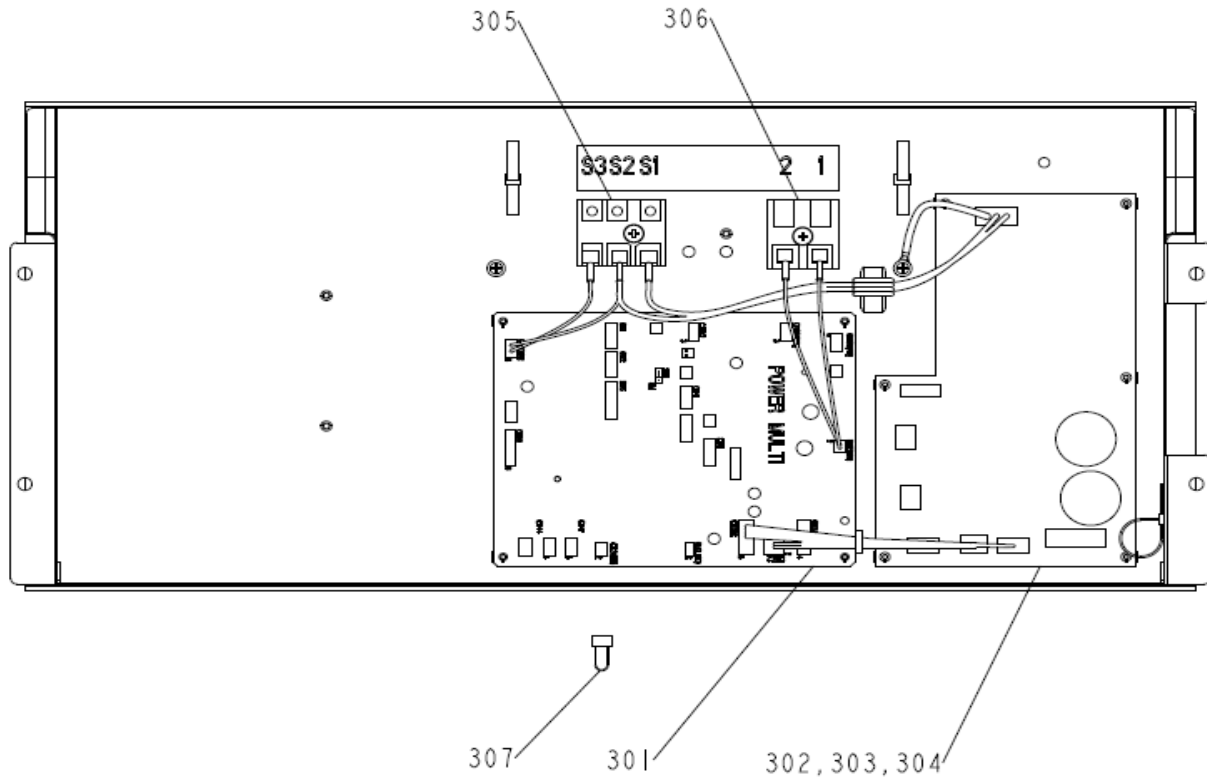
3. BLOWER PARTS



PVA-A12, 18, 24, 30, 36, 42AA7

| No. | Part No. | Part Name | Spec. | PVA-A12AA7 PVA-A12AA7-1 | PVA-A18AA7 PVA-A18AA7-1 | PVA-A24AA7 PVA-A24AA7-1 | PVA-A30AA7 PVA-A30AA7-1 | PVA-A36AA7 PVA-A36AA7-1 | PVA-A42AA7 PVA-A42AA7-1 | Dwg. No. | Notes for models | Revision info. |
|-----|-------------|-----------------------|-------|----------------------------|----------------------------|----------------------------|----------------------------|----------------------------|----------------------------|-------------|------------------|----------------|
| 201 | U41 008 129 | FAN CASE S | | 1 | 1 | | | | | PA00C249G01 | | |
| 202 | U41 009 129 | FAN CASE M | | | | 1 | 1 | | | PA00C249G02 | | |
| 203 | U41 010 129 | FAN CASE L | | | | | | 1 | 1 | PA00C249G03 | | |
| 204 | U41 003 128 | BLOWER MOTOR S | | 1 | 1 | | | | | PA61B071H02 | | |
| 205 | U41 004 128 | BLOWER MOTOR M | | | | 1 | 1 | | | PA61B072H02 | | |
| 206 | U41 005 128 | BLOWER MOTOR L | | | | | | 1 | 1 | PA61B073H02 | | |
| 207 | U41 001 130 | MOTOR BRACKET S M | | 1 | 1 | 1 | 1 | | | PA00D167G02 | | |
| 208 | U41 002 130 | MOTOR BRACKET L | | | | | | 1 | 1 | PA00D168G01 | | |
| 209 | U41 103 104 | RUBBER GROMMET | | | | | | 3 | 3 | PA32D195H01 | | |
| 210 | U41 001 287 | THERMISTOR RETURN AIR | | 1 | 1 | 1 | 1 | 1 | 1 | PA71C160H01 | | |
| 211 | U41 002 104 | BUSHING SRB-R-2 | | 1 | 1 | 1 | 1 | 1 | 1 | KB32K138H01 | | |
| 212 | U41 003 087 | SCREW SPECIAL | | | | | | 3 | 3 | PA12D193H01 | | |
| 213 | U41 005 087 | BOLT MOTOR (S, M) | | 4 | 4 | 4 | 4 | | | PA12D178H01 | | |
| 214 | U41 006 087 | BOLT MOTOR (L) | | | | | | 4 | 4 | PA12D194H01 | | |

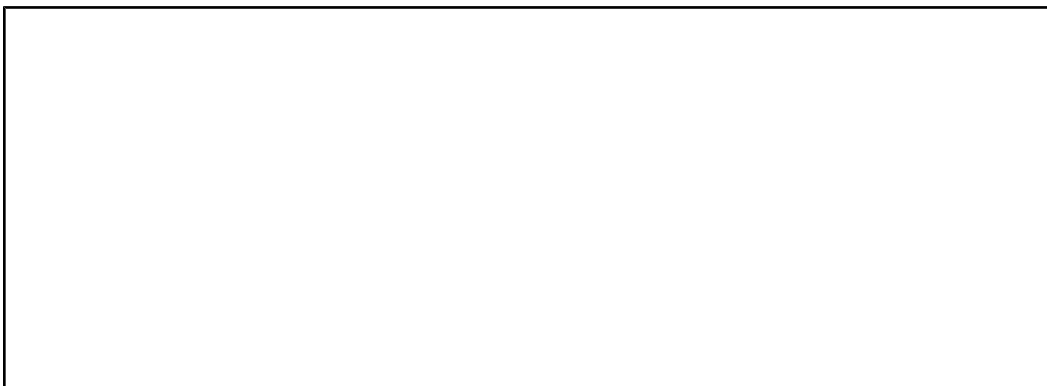
4. CONTROL BOX PARTS



| No. | Part No. | Part Name | Spec. | PVA-A12AA7 | PVA-A12AA7-1 | PVA-A18AA7 | PVA-A18AA7-1 | PVA-A24AA7 | PVA-A24AA7-1 | PVA-A30AA7 | PVA-A30AA7-1 | PVA-A36AA7 | PVA-A36AA7-1 | PVA-A42AA7 | PVA-A42AA7-1 | Dwg. No. | Notes for models | Revision info. |
|-----|-------------|---------------------|-------|------------|--------------|------------|--------------|------------|--------------|------------|--------------|------------|--------------|------------|--------------|-------------|------------------|----------------|
| 301 | U41 009 280 | PCA ASSY PVA/MVZ | | 1 | 1 | 1 | 1 | 1 | 1 | 1 | 1 | 1 | 1 | 1 | 1 | PA95D226G04 | INCLUDES NO.306 | |
| 302 | U41 005 280 | PCA BOARD POWER | | 1 | 1 | | | | | | | | | | | KE95B740F04 | | |
| 303 | U41 006 280 | PCA BOARD POWER | | | | | | 1 | 1 | | | | | | | KE95B740F05 | | |
| 304 | U41 006 281 | PCA BOARD POWER | | | | | | | | | | 1 | 1 | | | KE95B740F06 | | |
| 305 | U41 004 246 | TERMINAL BLOCK ASSY | | 1 | 1 | 1 | 1 | 1 | 1 | 1 | 1 | 1 | 1 | 1 | 1 | BH00C267G02 | | |
| 306 | U41 003 246 | TERMINAL BLOCK | | 1 | 1 | 1 | 1 | 1 | 1 | 1 | 1 | 1 | 1 | 1 | 1 | BG00R200G62 | | |
| 307 | U41 001 G08 | JUMPER CONNECTOR | | 1 | 1 | 1 | 1 | 1 | 1 | 1 | 1 | 1 | 1 | 1 | 1 | BB00M192G08 | CN4F | |

This product is designed and intended for use in the residential, commercial and light-industrial environment.

Please be sure to put the contact address/telephone number on this manual before handing it to the customer.

A large empty rectangular box with a black border, intended for the user to write the contact address and telephone number before handing the manual to the customer.

mitsubishi **ELECTRIC US, INC.**

www.mitsubishielectric-usa.com

Toll Free: 800-433-4822