

Submittal Data Sheet

15.2 SEER2, Air Conditioner System, 2.5 Ton, Outdoor Unit-GSXH503010A*

Submitted By : Goodman/Amana Unitary Test System

Submitted To : N/A

Tags : AHRI 208144850 Products [GSXH503010A* , CAPTA3626*4A* , GM9S960603BNA*] , SEER2 15.2 , EER2 12.0

STANDARD FEATURES:

- High-efficiency scroll compressor
- Copper tube/enhanced aluminum fin coil -5mm diameter on 1.5-3.0T
- Fully charged for 15' of tubing length
- Factory-installed filter drier
- Service valves with sweat connections and easy-to-access gauge ports
- Contactor with lug connection
- Ground lug connection
- AHRI Certified, ETL Listed

CABINET FEATURES:

- Removable grille-style top design compliant with UL 60335-2-40
- Venturi for increased velocity of airflow
- Heavy-gauge galvanized-steel cabinet
- Attractive Architectural Gray powder-paint finish with 500-hour salt-spray approval
- Steel louver coil guard
- Rust-resistant coated screws
- Single-panel access to controls with space provided for field-installed accessories
- When properly anchored, meets the 2020 Florida Building Code unit integrity requirements for hurricane-type winds (Anchor bracket kits available.)



At Goodman, we believe in American dependability. Units are designed, engineered and assembled in the U.S.A.



Submittal Data Sheet

15.2 SEER2, Air Conditioner System, 2.5 Ton, Outdoor Unit-GSXH503010A*

Submitted By : Goodman/Amana Unitary Test System

Submitted To : N/A

Tags : AHRI 208144850 Products [GSXH503010A* , CAPTA3626*4A* , GM9S960603BNA*] , SEER2 15.2 , EER2 12.0

SYSTEM PERFORMANCE

Outdoor Unit Model No.:	GSXH503010A*	Description :	15.2 SEER2, Air Conditioner System, 2.5 Ton Outdoor System
Indoor Unit Model No.:	CAPTA3626A4A*		
TXV/PISTON :	Factory		
Furnace Unit Model No.:	GM9S960603BN		
Rated Cooling Conditions:	Outdoor (°F DB/WB):N/A/N/A Indoor (°F DB/WB):N/A/N/A	Rated Heating Conditions:	Outdoor (°F DB/WB):N/A/N/A Indoor (°F DB/WB):N/A/N/A
Rated Cooling Capacity (Btu/hr):	28400	OD Rated Heating Capacity (Btu/hr)	N/A
EER2:	12.0	EER:	13.0
Heating COP:	N/A	SEER2:	15.2
SEER:	16.0	AFUE:	96

OUTDOOR UNIT DETAILS : GSXH503010A*

Power Supply (V/Hz/Ph):	208/230/60/1	Compressor Type:	Scroll
Min. Circuit Amps MCA (A):	17.0	Compressor Stages:	Single Stage
Quantity:	1	Max Overcurrent Protection (MOP) (A):	25
Suction Valve Connection Size (in):	-	Compressor Rated Load Amps :	12.8
Liquid Valve Connection Size (in):	-	Refrigerant Type:	R-410A
Sound Power(High/Med/Low) (dBA):	- / - / -	Holding Refrigerant Charge (oz):	101
Cooling Operation Range (°F DB):	- - -	Additional Charge (oz/ft):	-
Heating Operation Range (°F DB):	N/A	Pre-charge Piping (Length) (ft):	-
Net Weight (lb):	-	Dimensions (HxWxD) (in):	- x - x -
Gross Weight (lb):	216	*Max. Pipe Length (Vertical) (ft):	-
*Max. Pipe Length (Total) (ft):	-		

**Refer to Long Line Set Application TP-107 for lines greater than 80 ft. or vertical elevation changes more than 50 ft. for single stage equipment and 25 ft. for 2-stage equipment.*



At Goodman, we believe in American dependability. Units are designed, engineered and assembled in the U.S.A.



Submittal Data Sheet

15.2 SEER2, Air Conditioner System, 2.5 Ton, Outdoor Unit-GSXH503010A*

Submitted By : Goodman/Amana Unitary Test System

Submitted To : N/A

Tags : AHRI 208144850 Products [GSXH503010A* , CAPTA3626*4A* , GM9S960603BNA*] , SEER2 15.2 , EER2 12.0

Outdoor (GSXH503010) Dimensional Drawing is not available



At Goodman, we believe in American dependability. Units are designed, engineered and assembled in the U.S.A.



Submittal Data Sheet

15.2 SEER2, Air Conditioner System, 2.5 Ton, Outdoor Unit-GSXH503010A*

Submitted By : Goodman/Amana Unitary Test System

Submitted To : N/A

Tags : AHRI 208144850 Products [GSXH503010A* , CAPTA3626*4A* , GM9S960603BNA*] , SEER2 15.2 , EER2 12.0

STANDARD FEATURES:

- Compact and lightweight all-aluminum evaporator coil with AlumaFin7™ technology
- Optimized for use with R-401A refrigerant
- Factory-installed thermal expansion valves for cooling applications
- Rust resistant, thermoplastic drain pans featuring a low water-retention design
- Foil-faced insulation covers the internal casing to reduce cabinet condensation
- Single-piece access panel with tight seal helps to keep conditioned air from escaping
- Seal tight customized suction and liquid grommets for easy installation and removal
- 21" depth for easier attic access
- Vertical application
- AHRI certified
- ETL Listed

CABINET FEATURES:

- **DATA IS NOT AVAILABLE**



At Goodman, we believe in American dependability. Units are designed, engineered and assembled in the U.S.A.



Submittal Data Sheet

15.2 SEER2, Air Conditioner System,2.5 Ton, Outdoor Unit-GSXH503010A*

Submitted By : Goodman/Amana Unitary Test System

Submitted To : N/A

Tags : AHRI 208144850 Products [GSXH503010A* , CAPTA3626*4A* , GM9S960603BNA*] , SEER2 15.2 , EER2 12.0

INDOOR UNIT DETAILS : CAPTA3626A4A*

Quantity:	1	Configuration:	
Cased VS Uncased:	Cased	Dimensions (HxWxD) (in) :	28.50 x 23.50 x 26.00
Suction Connection Size (in) :	7/8	Net Weight (lb):	57
Liquid Connection Size (in) :	3/8	Gross Weight (lb):	58
Condensate Connection (in) :	3/4	Power Voltage (lb):	-
Current Type :	-	Power Phase:	-
Power Frequency :	-	Min Voltage :	-
Max Voltage :	-	MCA :	-
MOP :	-	Electric Heat Range :	-
Indoor Blower FLA :	-	Fan Motor Output :	-



At Goodman, we believe in American dependability. Units are designed, engineered and assembled in the U.S.A.



Submittal Data Sheet

15.2 SEER2, Air Conditioner System, 2.5 Ton, Outdoor Unit-GSXH503010A*

Submitted By : Goodman/Amana Unitary Test System

Submitted To : N/A

Tags : AHRI 208144850 Products [GSXH503010A* , CAPTA3626*4A* , GM9S960603BNA*] , SEER2 15.2 , EER2 12.0

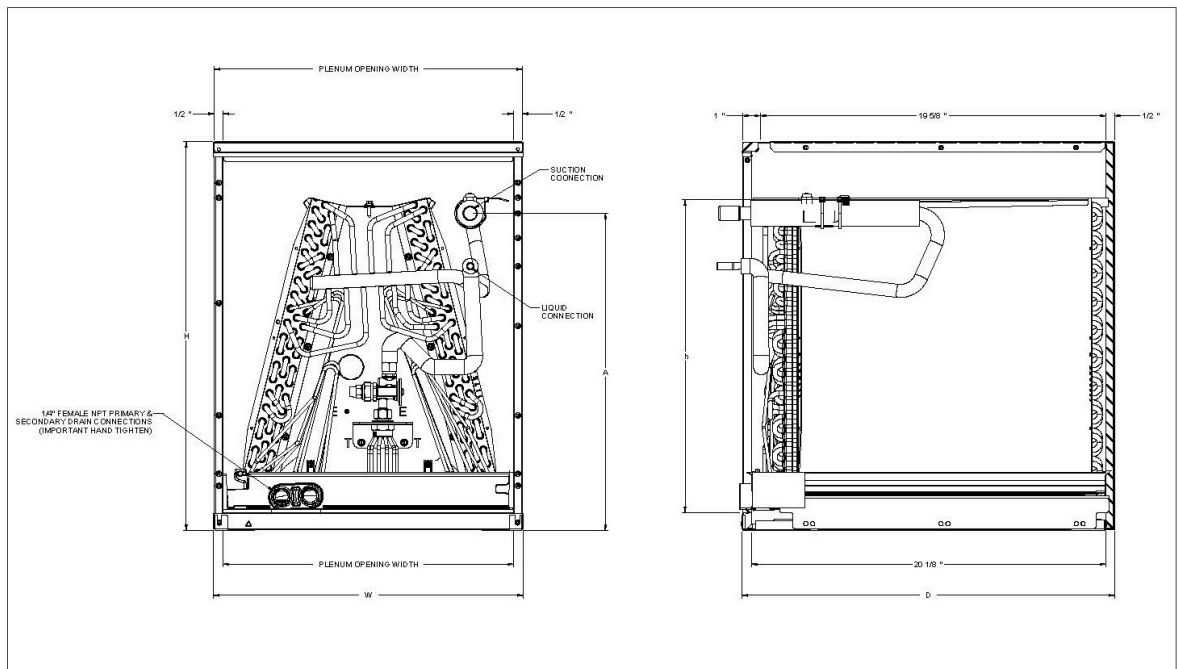
MODEL	CABINET DIMENSIONS			NOMINAL TONS	CONNECTION		SHIP WEIGHT (LBS)
	W	D	H		LIQUID	SUCTION	
CAPTA1818A4	14"	21"	18"	1.5	3/8"	3/4"	36
CAPTA1818B4	17.5"	21"	18"	1.5	3/8"	3/4"	41
CAPTA2422A4	14"	21"	22"	2	3/8"	3/4"	44
CAPTA2422B4	17.5"	21"	22"	2	3/8"	3/4"	48
CAPTA2422C4	21"	21"	22"	2	3/8"	3/4"	53
CAPTA3022A4	14"	21"	22"	2.5	3/8"	3/4"	44
CAPTA3022B4	17.5"	21"	22"	2.5	3/8"	3/4"	48
CAPTA3022C4	21"	21"	22"	2.5	3/8"	3/4"	53
CAPTA3026B4	17.5"	21"	26"	2.5	3/8"	7/8"	50
CAPTA3026C4	21"	21"	26"	2.5	3/8"	7/8"	52
CAPTA3626B4	17.5"	21"	26"	3	3/8"	7/8"	54
CAPTA3626C4	21"	21"	26"	3	3/8"	7/8"	57
CAPTA4230C4	21"	21"	30"	3.5	3/8"	7/8"	63
CAPTA4230D4	24.5"	21"	30"	3.5	3/8"	7/8"	66

¹ (ft²)

² Shipped with Coil

Note: For a properly matched system and piston sizing information, refer to the piston kit chart of the corresponding outdoor unit.

DIMENSIONS



At Goodman, we believe in American dependability. Our units are designed, engineered and assembled in the U.S.A.



Submittal Data Sheet

15.2 SEER2, Air Conditioner System, 2.5 Ton, Outdoor Unit-GSXH503010A*

Submitted By : Goodman/Amana Unitary Test System

Submitted To : N/A

Tags : AHRI 208144850 Products [GSXH503010A* , CAPTA3626*4A* , GM9S960603BNA*] , SEER2 15.2 , EER2 12.0

STANDARD FEATURES:

- Heavy-duty aluminized-steel tubular heat exchanger
- Stainless-steel sloped secondary heat exchanger
- Silicon Nitride igniter
- Color-coded low-voltage terminals
- Multi-speed ECM blower motor with continuous fan speed
- Fault code LED Output
- AHRI Certified - ETL Listed
- Energy Star
- Single-Stage gas Valve
- Furnace control board with self-diagnostics and provisions for electronic air cleaner and 120-volt or 24-volt humidifiers
- Low constant fan speed circulates air throughout the home
- High static
- All models comply with California Ultra-Low NOx 14 ng/J

CABINET FEATURES:

- DATA IS NOT AVAILABLE



At Goodman, we believe in American dependability. Units are designed, engineered and assembled in the U.S.A.



Submittal Data Sheet

15.2 SEER2, Air Conditioner System,2.5 Ton, Outdoor Unit-GSXH503010A*

Submitted By : Goodman/Amana Unitary Test System

Submitted To : N/A

Tags : AHRI 208144850 Products [GSXH503010A* , CAPTA3626*4A* , GM9S960603BNA*] , SEER2 15.2 , EER2 12.0

INDOOR FURNACE UNIT DETAILS : GM9S960603BNA*

Configuration:	Upflow/Horizontal	Blower/Motor Size:	Nine Speed ECM
NOx:	Natural Gas	Communication:	Non-Communicating
Power Supply (V/Hz/Ph):	115/60/1	Temperature Rise Range High Fire (° F):	35-65
Min. Circuit Amps MCA (A):	10.3	Temperature Rise Range Low Fire (° F):	-
Max Overcurrent Protection (MOP) (A):	15.0	High Fire Input Capacity :	60000
AFUE :	96	High Fire Output Capacity :	57660
Vent Diameter (In):	4	Low Fire Input Capacity :	-
Net Weight (lb):	111	Low fire output Capacity :	-
Gross Weight (lb):	119	Dimensions (HxWxD) (in):	33-3/8 x 17-1/2 x 28
Power Voltage (lb):	115	Current Type :	-
Power Phase:	1	Power Frequency :	60
Min Voltage :	-	Max Voltage :	-
MCA :	10.3	MOP :	15.0
Electric Heat Range :	-	Indoor Blower FLA :	-
Fan Motor Output :	-	Outdoor Fan LRA :	-



At Goodman, we believe in American dependability. Units are designed, engineered and assembled in the U.S.A.



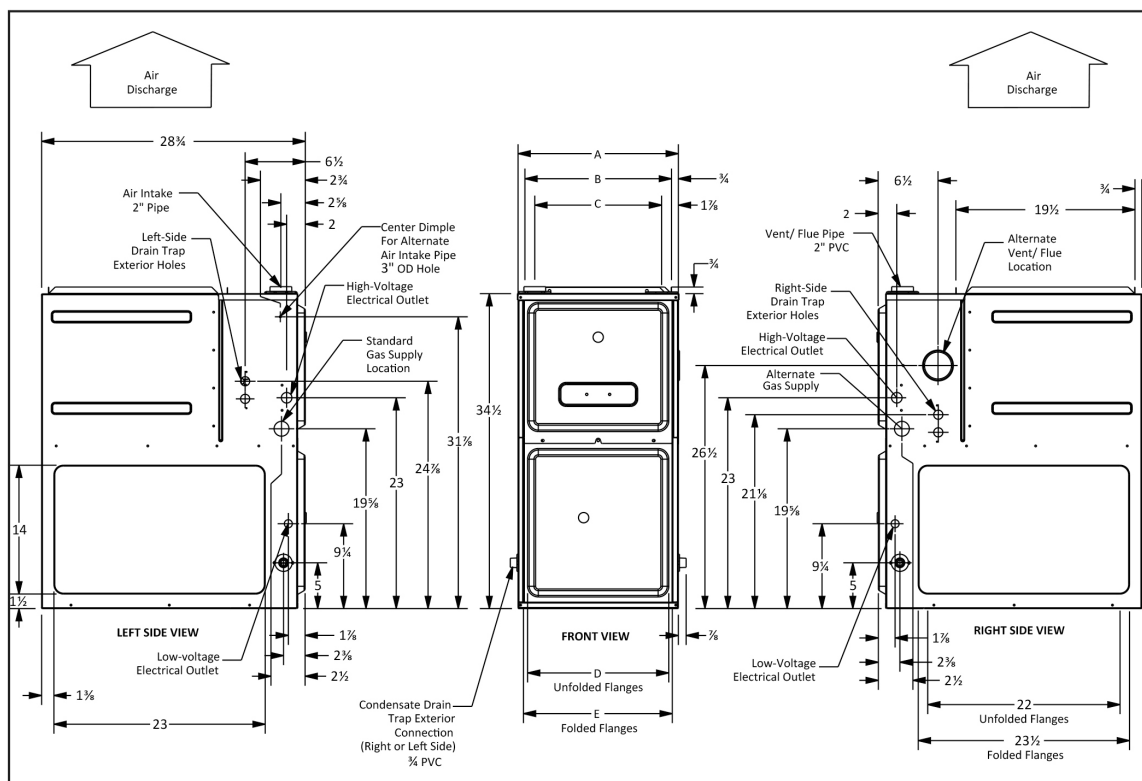
Submittal Data Sheet

15.2 SEER2, Air Conditioner System, 2.5 Ton, Outdoor Unit-GSXH503010A*

Submitted By : Goodman/Amana Unitary Test System

Submitted To : N/A

Tags : AHRI 208144850 Products [GSXH503010A* , CAPTA3626*4A* , GM9S960603BNA*] , SEER2 15.2 , EER2 12.0



MODEL	A	B	C	D	E
GM9S960403AN	14"	12 1/2"	10 1/2"	8 5/8"	10 5/8"
GM9S960603BN	17 1/2"	16"	13 3/4"	12 1/2"	13 3/4"
GM9S960803BN	17 1/2"	16"	13 3/8"	12 1/2"	13 3/8"
GM9S960804CN	21"	19 1/2"	17 3/4"	16"	17 1/2"
GM9S960805CN	21"	19 1/2"	17 3/8"	16"	17 1/2"
GM9S961005CN	21"	19 1/2"	17 3/8"	16"	17 1/2"
GM9S961205DN	24 1/2"	23"	20 5/8"	19 3/8"	20 5/8"

MINIMUM CLEARANCES TO COMBUSTIBLE MATERIALS

POSITION	SIDES	REAR	FRONT	BOTTOM	FLUE	TOP
Upflow	0"	0"	3"	C	0"	1"
Horizontal	6"	0"	3"	C	0"	6"

C = If placed on combustible floor, the floor MUST be wood ONLY.



designed, engineered and assembled in the U.S.A.

re

