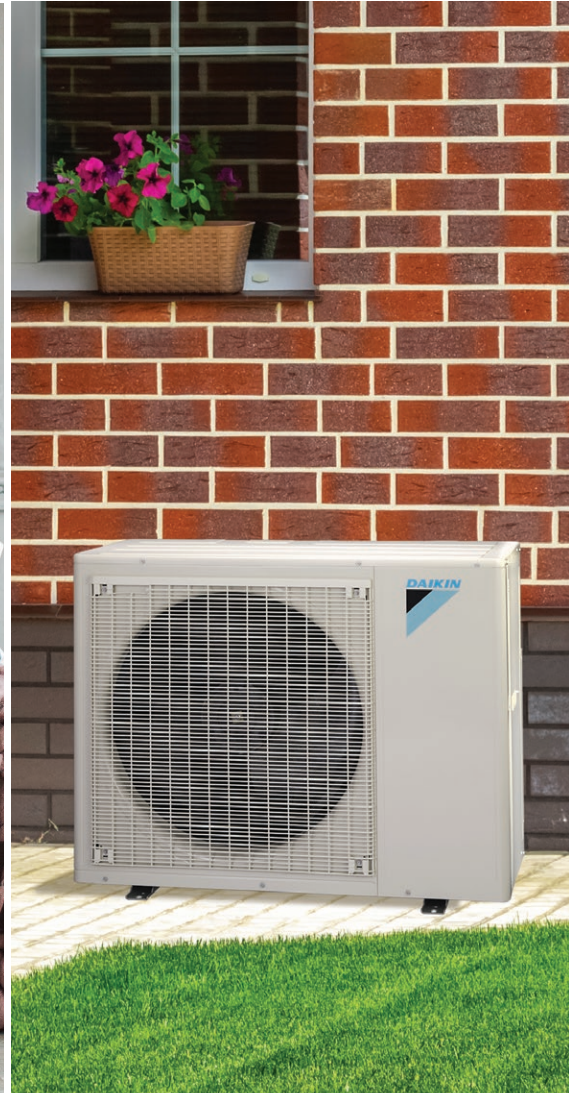




CONNECT  
UP TO **5** INDOOR  
UNITS!



## DAIKIN MXS SERIES MULTI-ZONE HEATING & COOLING SYSTEMS

1.5-4 TON, 2-5 ZONE SYSTEMS  
Up to 20.2 SEER / Up to 12.5 HSPF  
Up to 12.7 EER  
VARIABLE-SPEED COMPRESSOR  
RESIDENTIAL AND LIGHT  
COMMERCIAL APPLICATIONS



**Today, the air is perfect.** Perfect temperature. Perfect humidity. Perfectly clean and fresh, like just after a rainstorm. And the only thing more perfect than this outdoor scenario is that it's all happening inside. Because that's where we work. That's where we play, where we sleep, where we truly live.

And that's why at Daikin, we aim to make the air inside as refreshing as the outside. Better comfort. Better control and efficiency. Better quality. So you can create your own unique ecosystem. And everyday is perfect. **Inside and out.**

## Single-Zone Wall-Mounted Heat Pump VARIABLE-SPEED, INVERTER, COMPRESSOR



### Perfecting The Air We Share

A better understanding of how people inhabit their living spaces has led to products designed to create indoor environments that help use energy resources more effectively. Heat pumps extract or reject heat from the outside air, even in cold weather. They use an electrically powered compressor and are extremely effective at

heating and cooling an apartment or a house. Daikin heat pumps are quiet and discreet, and use state-of-the-art technology to keep your energy bills low. With a Daikin heat pump, a large portion of the energy used to heat or cool your home comes from the outside air, a free and infinitely renewable resource.





## Comfort

We offer a wide range of products, and always provide you with the ideal solution, whether for an apartment, condo or a house. Our units are whisper quiet and, with their specially designed airflow pattern, they create your ideal indoor climate.

Daikin units are designed to include features that let you create your own unique ecosystem. From the wide angle louver design to the auto-swing and comfortable mode controller settings, effective heating and cooling is ensured throughout the space.

## Smart inverter technology

Integrated with a variable-speed inverter compressor, Daikin systems deliver the capacity required to maintain desired room conditions, typically reducing energy consumption by up to 30% or more (compared to traditional fixed-speed ducted systems). This technology minimizes temperature fluctuations and provides continuous cooling and heating comfort.

## Energy efficiency

Our products are designed to be highly efficient all year round, and their low energy consumption is reflected in low energy bills for you.

## Control\*\*

Our expertise makes life easier for you, allowing you to control your system via a smartphone app or a user-friendly remote control.

## Reliability

Daikin products are renowned for their reliability. And you can rely on service to match, with industry leading warranties.\*



\* Complete warranty details available from your local dealer/contractor or at [www.daikincomfort.com](http://www.daikincomfort.com). To receive the 12-Year Parts Limited Warranty, online registration must be completed within 60 days of installation. Online registration is not required in California or Québec.

\*\* Adaptor required



# MXS Series Multi-Zone Heating and Cooling Systems

## Multi-Zone systems provide high efficiency and comfort

Daikin's Multi-Zone Systems are ideal for multi-room applications desiring individual room comfort in a space-saving design. With the ability to connect two, three, four, or five indoor units to a single outdoor unit, over 1,000 combinations are possible with the choice of wall mount units, ducted units, ceiling cassette units, floor mounts or a combination. Suitable for both new build and renovation projects, Daikin Multi-Split Systems are the smart, reliable solution for your home

### Premium Comfort Features:

- » **Energy Efficient** – Up to 20.2 SEER, up to 12.5 HSPF, up to 12.7 EER – Variable-Speed, Inverter, Compressor

### Ideal Solution for:

- » Entire homes or floors of homes
- » Multiple zones
- » New construction
- » Primary living areas (master bedrooms and living rooms)

### Outdoor Unit Features:



**Anti-Corrosion Treatment on Heat Exchanger**



**Quick Warming Function** – Preheats the compressor to shorten the time required to discharge warm air.



**Automatic Defrosting** – Sensor performs automatic defrosting of the outdoor heat exchanger if necessary, ensuring optimum heating performance.



**Outdoor Unit Quiet Operation** – Outdoor unit sound levels can be reduced by 3dB for times when quieter operation is needed.



**Intelligent Defrost Mode\*** – The outdoor unit will enable this mode to help prevent frost/ice from building up in cold climate conditions. It will also help with longer heating operation time for additional comfort for occupants (compared to HVAC systems without this function).

\*Available on 5MXS only



5MXS drain pan shown

### Optimized drain pan:

- » Outdoor unit drain pans have up to 14 holes which allows for effective drainage of condensation. In some cases, this drain pan design eliminates the need for drain pan heaters, resulting in higher efficiencies in low ambient temperatures.



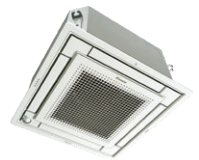
# DAIKIN MXS SERIES MULTI-ZONE HEATING & COOLING SYSTEMS

## Compatible Indoor Units:



### EMURA – Designed to perfectly balance technological capability and the beauty of aerodynamics

- » Iconic award winning design and engineering excellence
- » Elegant finish in pure matte white or modern silver
- » Two-area intelligent eye sensor controls comfort and allows for energy savings during unoccupied periods
- » Titanium apatite photo-catalytic air purification



### VISTA – Unique design that integrates seamlessly into the ceiling

- » Iconic award winning design and engineering excellence
- » Elegant finish in white or silver / white combination
- » DC fan motor and two optional intelligence sensors for energy efficiency
- » Outside air integration possible of up to 2-3% of the nominal indoor air volume



### FTXS – Discreet wall mounted unit providing high efficiency and comfort

- » Discreet, stylish front panel blends easily with the wall, and matches all interior decors
- » Dry program allows humidity levels to be reduced without variations in room temperature
- » Intelligent Eye function reduces heating or cooling operation during unoccupied periods



### FVXS – Floor mounted unit for optimal heating comfort thanks to dual airflow

- » Its low height enables the unit to fit perfectly beneath a window
- » Can be installed against a wall or recessed
- » Vertical auto swing moves the louver up and down for efficient air and temperature distribution



### FDMQ – Ducted Concealed Indoor Unit capable of up to .6 esp

- » Higher external static pressure capabilities allow for longer duct runs and easily implementing up to MERV 13 filters (compared to units with lower static pressure)
- » Drain pan inspection port makes it easy to observe drain pan conditions
- » Rear or bottom return air configurations for installation flexibility
- » Outside air integration possible



### FDXS/CDXS – Slim Ducted Concealed Ceiling Unit capable of up to 0.18 esp

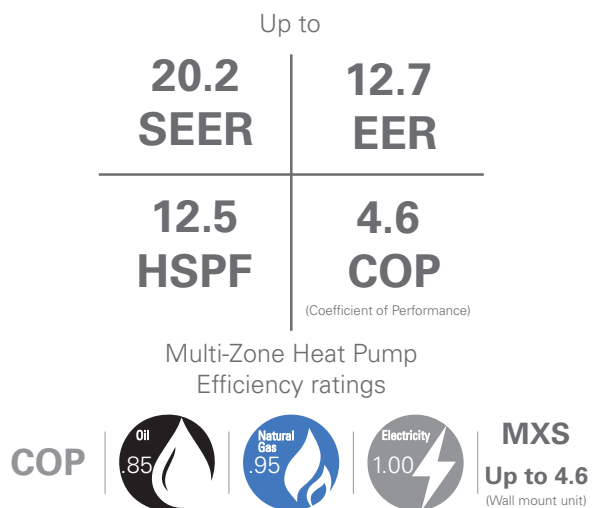
- » External static pressure facilitates unit's use with minimal length of duct runs
- » Discretely concealed in the ceiling: only the suction and discharge grills are visible
- » DC fan motor for low energy consumption

## Knowledge is power

In general, system performance is measured by a higher Seasonal Energy Efficiency Ratio (SEER) and Energy Efficiency Ratio (EER). Higher ratings mean lower operating costs. Similarly, a higher rated Heating Seasonal Performance Factor (HSPF) and Coefficient of Performance (COP) means a more efficient air-source heat pump.

## Why is it important?

The COP of a heat pump is the ratio of:  $COP = \frac{\text{energy out}}{\text{energy in}}$ . When the COP is >1, the result is a system providing more heating energy than energy consumed. As the COP increases, the higher the efficiency — resulting in lower utility costs.





## You're always in control.

### Individual comfort and control

Daikin systems have an available infrared remote controller allowing you to access all functions at the click of a button.

### From anywhere in the world. Or your living room.



It can happen to anyone. You forgot to change the temperature of your heat pump system or air conditioner before leaving the house, or you will be delayed returning home and wish to avoid needlessly heating or cooling your home. What in the past would have resulted in wasted energy is no longer a problem. With the DKN App, you are always in control. You can use your tablet or smart-phone to access your Daikin system via the internet\*.

\*Requires purchase and installation of BRP072A43, AZAI6WSCDKA, or AZAI6WSCDKB adaptors depending on the indoor unit. Features vary by adaptor. See each adaptor's product flyer for more information.

### NEW! Daikin *Madoka* Remote Controller



Daikin is pleased to introduce the *Madoka* remote controller for the North American FDMQ and FFQ indoor units (P1P2) indoor units. The *Madoka* features a sleek and stylish design with an intuitive interface including touch button control. It retains advanced

functions for indoor unit control. It can be commissioned and managed with ease through a Bluetooth® configuration app or via the onboard menus. The *Madoka* provides 3 configurable display modes: Text (default), Icon, and Scale to help meet project and occupant needs. Learn more at [www.daikinac.com](http://www.daikinac.com).



**Madoka Quick Set App**  
Available for download on  
iOS and Android devices.



### COMING SOON! Daikin *Adaptive Touch* Controller



The Daikin *Adaptive Touch Controller* (ATC) is used to control FDMQ and FFQ indoor units (P1P2) with advanced and configurable control logic. The *ATC* comes in 4 different models with a built-in temperature sensor, humidity sensor, CO<sub>2</sub> sensor, and occupancy sensor. The *ATC* will also provide analog input, analog output, digital input, and digital output terminals to monitor auxiliary sensors and control auxiliary equipment. The built-in sensors can be combined with advanced logic to create actionable tasks based upon the sensor values. The *ATC* controller can be integrated with a compatible building management system (BMS) using *BACnet™* MS/TP.

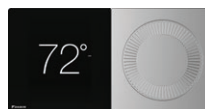
### NEW! Daikin DKN Plus Interface



The new Daikin DKN Plus Interface (AZAI6WSPDKC) enables the energy-efficient control of Daikin air conditioners by a third-party thermostat or an automation system. With this interface, third-

party devices or systems can control the Single-Zone and Multi-Zone indoor units through the DKN NA App, Cloud API, Modbus®, BACnet™ MS/TP, or thermostat relay contacts. This interface can be commissioned easily through the DKN Cloud NA app via Bluetooth® Low Energy (BLE). Learn more at [www.daikinac.com](http://www.daikinac.com).

### NEW! Daikin *One+* Smart Thermostat






The Daikin *One+* smart thermostat is now available for single and multi-zone indoor unit models. With the new translation adaptor, connecting the Daikin *One+* smart thermostat provides several user features including remote monitoring, control and geofencing using the Daikin *One* home app, *Google*, and *Amazon* voice assistants. Learn more at [www.daikinone.com](http://www.daikinone.com).

\*\* Note that the handheld remote that comes with some indoor units should not be used together with the Daikin *One+* smart thermostat.



# SPECIFICATIONS

Outdoor Units	2-Port (2MXS18NMVJUA)			3-Port (3MXS24RMVJUA)		4-Port (4MXS36RMVJUA)		5-Port (5MXS48TVJU)	
	Efficiency		AHRI#	Efficiency	AHRI#	Efficiency	AHRI#	Efficiency	AHRI#
Non-Ducted	18.9 SEER / 12.5 EER / 10.7 HSPF		205663351	18 SEER / 12.7 EER / 12.5 HSPF	205663356	17.7 SEER / 9.2 EER / 12.2 HSPF	205663360	20.2 SEER / 10.5 EER / 11.1 HSPF	202638701
Ducted	14 SEER / 9.5 EER / 8.2 HSPF		205663352	14 SEER / 9.7 EER / 8.2 HSPF	205663357	14 SEER / 7.9 EER / 8.2 HSPF	205663361	15.3 SEER / 8.6 EER / 8.6 HSPF	202638702
Mixed	16.45 SEER / 11 EER / 9.45 HSPF		205663353	16 SEER / 11.2 EER / 10.35 HSPF	205663366	15.85 SEER / 8.55 EER / 10.2 HSPF	205663368	17.75 SEER / 9.55 EER / 9.85 HSPF	202650862

Outdoor Units	2-Port (2MXS18NMVJU)			3-Port (3MXS24RMVJU)			4-Port (4MXS36RMVJU)		
	Efficiency		AHRI#	Efficiency		AHRI#	Efficiency		AHRI#
Non-Ducted	18.9 SEER / 12.5 EER / 10.7 HSPF		8103542	18 SEER / 12.7 EER / 12.5 HSPF		201851575	17.7 SEER / 9.2 EER / 12.2 HSPF	201851579	
Ducted	14 SEER / 9.5 EER / 8.2 HSPF		8103477	14 SEER / 9.7 EER / 8.2 HSPF		201851576	14 SEER / 7.9 EER / 8.2 HSPF	201851580	
Mixed	16.45 SEER / 11 EER / 9.45 HSPF		8104492	15.95 SEER / 11.2 EER / 10.35 HSPF		201851581	15.85 SEER / 8.55 EER / 10.2 HSPF	201851583	

Indoor Units / Dimensions (HxWxD)	Unit Class					
	07	09	12	15	18	24
EMURA (Wall Mount)		FTXR09TVJUW/S	FTXR12TVJUW/S		FTXR18TVJUW/S	
		11 <sup>15</sup> / <sub>16</sub> x 39 <sup>5</sup> / <sub>16</sub> x 8 <sup>3</sup> / <sub>8</sub>			11 <sup>15</sup> / <sub>16</sub> x 39 <sup>5</sup> / <sub>16</sub> x 8 <sup>3</sup> / <sub>8</sub>	
VISTA (Ceiling Cassette)		FFQ09Q2VJU	FFQ12Q2VJU	FFQ15Q2VJU	FFQ18Q2VJU	
		10 <sup>1</sup> / <sub>4</sub> x 22 <sup>5</sup> / <sub>8</sub> x 22 <sup>5</sup> / <sub>8</sub>				
FTXS Wall Mount	CTXS07LVJU	FTXS09LVJU	FTXS12LVJU	FTXS15LVJU	FTXS18LVJU	FTXS24LVJU
	11 <sup>5</sup> / <sub>8</sub> x 31 <sup>1</sup> / <sub>2</sub> x 8 <sup>7</sup> / <sub>16</sub>			13 <sup>3</sup> / <sub>8</sub> x 41 <sup>5</sup> / <sub>16</sub> x 9 <sup>3</sup> / <sub>4</sub>		
FVXS Floor/Low Wall Mount		FVXS09NVJU	FVXS12NVJU	FVXS15NVJU	FVXS18NVJU	
		23 <sup>5</sup> / <sub>8</sub> x 27 <sup>3</sup> / <sub>16</sub> x 8 <sup>1</sup> / <sub>4</sub>				
FDMQ Ducted Concealed		FDMQ09RVJU	FDMQ12RVJU	FDMQ15RVJU	FDMQ18RVJU	FDMQ24RVJU
		9 <sup>5</sup> / <sub>8</sub> x 27 <sup>3</sup> / <sub>16</sub> x 31 <sup>1</sup> / <sub>2</sub>			9 <sup>5</sup> / <sub>8</sub> x 39 <sup>5</sup> / <sub>16</sub> x 31 <sup>1</sup> / <sub>2</sub>	
FDXS/CDXS Slim Duct	CDXS07LVJU	FDXS09LVJU	FDXS12LVJU	CDXS15LVJU	CDXS18LVJU	CDXS24LVJU
	7 <sup>7</sup> / <sub>8</sub> x 27 <sup>3</sup> / <sub>16</sub> x 24 <sup>7</sup> / <sub>16</sub>			7 <sup>7</sup> / <sub>8</sub> x 35 <sup>7</sup> / <sub>16</sub> x 24 <sup>7</sup> / <sub>16</sub>		3 <sup>7</sup> / <sub>8</sub> x 43 <sup>5</sup> / <sub>16</sub> x 24 <sup>7</sup> / <sub>16</sub>



Proper sizing and installation of equipment is critical to achieve optimal performance. Split system air conditioners and heat pumps must be matched with appropriate coil components to meet **ENERGY STAR**® criteria. Ask your contractor for details or visit [www.energystar.gov](http://www.energystar.gov).



## About Daikin:



Daikin Industries, Ltd. (DIL) is a global Fortune 1000 company which celebrated its 95th anniversary in May 2019. The company is recognized as one of the largest HVAC (Heating, Ventilation, Air Conditioning) manufacturers in the world. DIL is primarily engaged in developing indoor comfort systems and refrigeration products for residential, commercial and industrial applications. Its consistent success is derived, in part, from a focus on innovative, energy-efficient and premium quality indoor climate and comfort management solutions.

## NEW! Daikin SplitXpress Selection Tool

The new interactive *SplitXpress* mobile app and website provide a complete product selection tool to streamline system selection for single and multi-zone projects. Users can create equipment selections and add accessories / pricing details to quickly share quotes with customers. Available for free on the *App Store* (iOS) and *Google Play* (Android), and at <https://splitxpress.daikincity.com>.



## WARNINGS:

- » Always use a licensed installer or contractor to install this product. Do not try to install the product yourself. Improper installation can result in water or refrigerant leakage, electrical shock, fire or explosion.
- » Use only those parts and accessories supplied or specified by Daikin. Ask a licensed contractor to install those parts and accessories. Use of unauthorized parts and accessories or improper installation of parts and accessories can result in water or refrigerant leakage, electrical shock, fire or explosion.
- » Read the User's Manual carefully before using this product. The User's Manual provides important safety instructions and warnings. Be sure to follow these instructions and warnings.
- » For any inquiries, contact your local Daikin sales office.

*App Store is a registered trademark of Apple Inc.*

*Google Play and the Google Play logo are trademarks of Google LLC.*

*Google, Google Assistant, and all related logos are trademarks of Google LLC or its affiliates.*

*Amazon, Alexa and all related logos are trademarks of Amazon.com, Inc. or its affiliates.*

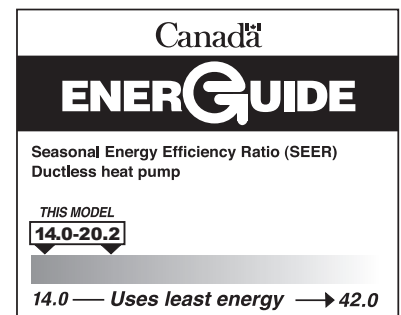
*The Bluetooth® word mark and logos are registered trademarks owned by Bluetooth SIG, Inc., and any use of such marks are under license.*

*BACnet™ is a trademark of ASHRAE.*

*Modbus® is a registered trademark of Schneider Electric USA, Inc.*

## ADDITIONAL INFORMATION

Before purchasing this appliance, read important information about its estimated annual energy consumption, yearly operating cost, or energy efficiency rating that is available from your retailer.



Our continuing commitment to quality products may mean a change in specifications without notice.

© 2021 **DAIKIN NORTH AMERICA LLC** · Houston, Texas · USA · [www.daikincomfort.com](http://www.daikincomfort.com) or [www.daikinac.com](http://www.daikinac.com)

CB-MXS 09-21