

THE EXPERTS IN ROOM AIR CONDITIONING



FRIEDRICH

1 8 8 3

Vert-I-Pak®

Single Package Vertical Air Conditioners

Unique Sleeve Design Provides Quieter Operation



FreshAir® IAQ READY



Vert-I-Pak®

A BETTER SOLUTION FOR HOSPITALITY & MULTI-FAMILY SUITES

A quiet, energy efficient option for suites, extended stay properties, assisted living, and student housing



Ducted and closet-mounted, Vert-I-Pak eliminates the need for multiple through-the-wall units. The Vert-I-Pak unit is installed out of sight, so guests enjoy a more attractive, more homelike appearance.

BETTER AESTHETICS

Indoors

The unit is installed out of sight, so your guests will only see a wall thermostat.

Outdoors

Packaged unit eliminates the clutter of outdoor condensing units and the sleek architectural grille is available in custom colors to match the building's exterior.



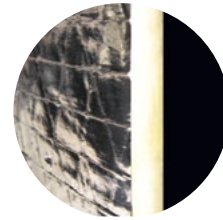
ENGINEERED FOR QUIETER PERFORMANCE

Friedrich's 'Free Floating' chassis design and superior insulation help to eliminate vibration noise

The chassis slides into the wall plenum and a gasket firmly seals the chassis to the patented telescoping plenum. This eliminates vibration noises that are transmitted into the room in competitors' metal-on-metal fixed installations. Extra thick, vibration-absorbing rubber grommets mounted on a durable base that is engineered for structural and acoustic integrity.



Chassis slides into gasketed, telescoping wall plenum



Foil-backed, ½" insulation blanket inside the cabinet reduces sound transmitted into the guest room

VERT-I-PAK® IS A SUPERIOR PRODUCT

Advanced features you'll find on Friedrich Vert-I-Pak

1. Floating chassis design slides into a wall plenum and is held firmly in place by a sealing gasket, reducing noise from vibration transfer.
2. ½ inch foil-backed insulation added on the inside of the chassis to reduce sound transmission into the guest room.
3. All model efficiencies of 11.0 EER and 3.3 COP.
4. Condensate removal system uses slinger ring technology to cool the coil and increase efficiency.
5. Dynamically balanced blower with large, vibration-absorbing motor mounts for smooth and quiet operation.
6. Patented telescoping plenums (accessory) easily adapt to more installations.
7. 5 year limited warranty*; 1 year labor warranty.
8. A full suite of factory approved indoor air quality accessories designed to deliver healthy air

* See warranty documentation for details.

What you'll find on many competitors' products

1. Chassis is screwed into the wall plenum. Metal-on-metal contact transfers vibration, increasing operating noise under typical conditions. Noise is transferred through the walls and into the room.
2. No insulation on the unit to reduce noise transmission into the guest room.
3. Hard plastic feet on the unit base which are less durable and transfer harsh vibration noise.
4. Different plenums needed based on varying wall depths.
5. No labor warranty.
6. No approved indoor air quality accessories

CAPACITIES UP TO 22,500 BTU

Heat Pump

COOLING

9000–22500 Btu

All 11.0 EER

REVERSE HEATING

8200–19200 Btu

All 3.3 COP

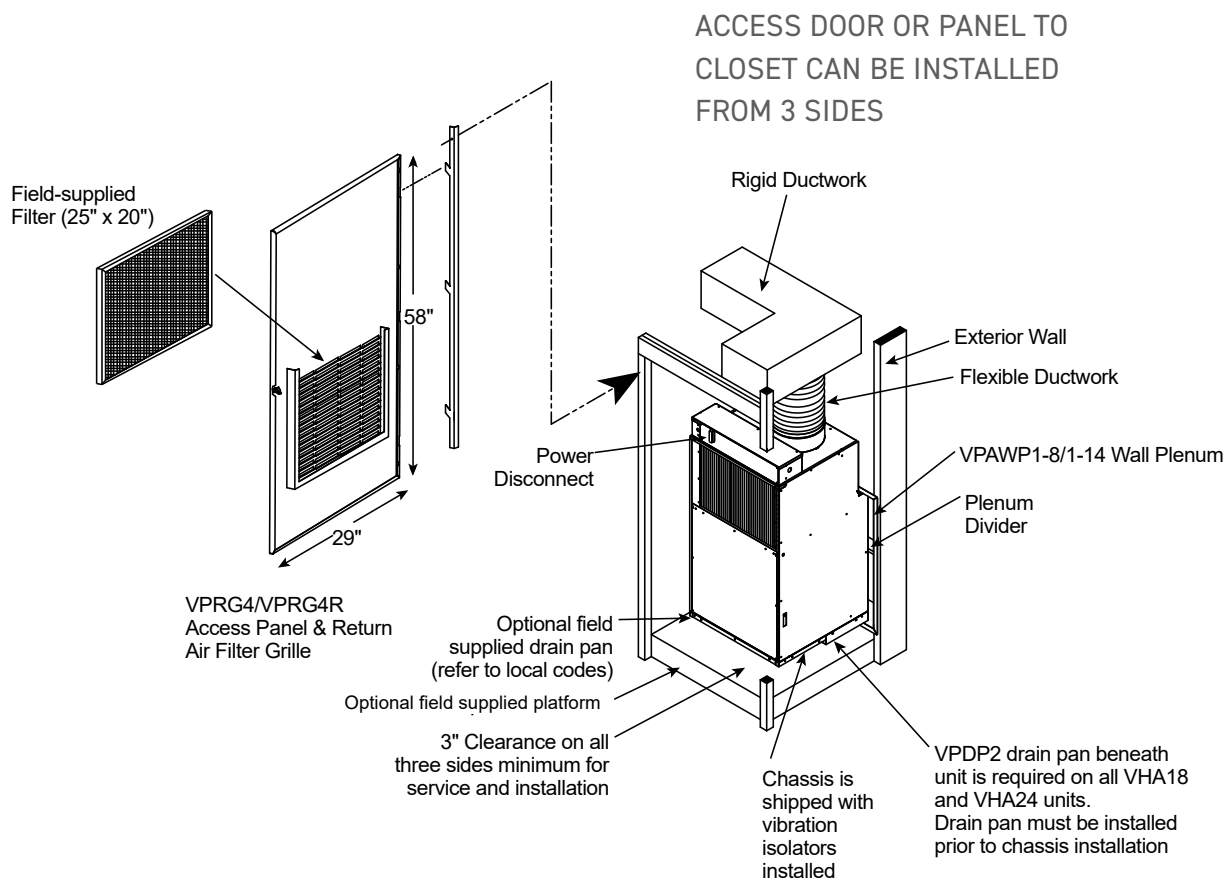
AUXILIARY ELECTRIC HEATING

7000–34000 Btu

ASHRAE 90.1-2013 Compliant



TYPICAL VERT-I-PAK® INSTALLATION



VERT-I-PAK® ADVANTAGES

A better heating and cooling option inside and out

- Eliminates the clutter of outdoor condensing units and the need for vandalism barriers.
- Completely self-contained
- No refrigerant lines running from floor to floor
- Fast, easy replacement keeps spaces livable

Improved guest comfort

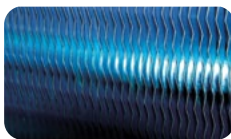
- Individually controlled
- Vert-I-Pak models include back up auxiliary electric heat.
- Duct air specifically where it's needed, not just on the outside wall
- 2-speed fan with constant fan option on Friedrich RT7, RT7P and WRT2 thermostats

FEATURES

Reliable and durable

- BLDC (Brushless DC Motor) motors for maximum efficiency
- Engineered drain pan won't rust, eliminating the risk of unsightly rust stains from condensation on the building exterior
- Painted, 18-gauge galvanized steel cabinet resists corrosion
- Standard safety power disconnect
- Electronic control panel on unit for easy diagnostics and servicing
- Every unit is 100% run tested prior to shipment


DIAMONBLUE
Advanced Corrosion Protection®



Protects the outdoor coil against deterioration and extends the life of the unit especially in harsh coastal environments.

A better choice than whole building solutions

- Lower installed cost
- Independent metering (no need to prorate for multi tenant applications)
- Individual temperature setpoint (one unit can heat and others can cool)
- Less risk, with a whole building system, spaces may become uninhabitable until the system is repaired or replaced
- Vert-I-Pak can be easily accessed for maintenance or replacement

FreshAir® IAQ Ready

- A full complement of Indoor Air Quality Products has been certified through installation and testing to ensure exceptional air quality is achieved when FreshAir IAQ accessories are added

Warranty and Support

- Industry leading warranty features 1 year full warranty on parts and labor and 5 year limited warranty.
- Nationwide service network and U.S. based Friedrich expert technical team ensures you get fast, knowledgeable service.



See warranty documentation for full details

Easy installation

- Can be installed from any interior side (front, right or left)
- Ductable to multiple rooms
- Compact and lightweight, weighs as little as 114 lbs.
- Installation does not require an HVAC technician
- Prewired, charged and piped
- Units are ready to install with only electrical hook up needed
- 10" crimped and beaded duct-collar ready to attach flex duct
- Patented telescoping wall plenums adjust to fit varying exterior wall thicknesses
- Primary condensate removal system provided through 3/4" pipe fittings for more placement options
- Secondary overflow from primary drain*
- Central desk control ready
- 24-volt remote wireless or wired thermostat ready

Energy management thermostats available

- Wired (EMRT2) and wireless (EMWRT2) thermostats
- Integrated motion and thermal occupancy sensor
- Auto changeover
- 5 distinct energy presets
- Comprehensive remote management capability**

* 18000 Btu & 24000 Btu models use secondary gravity-fed drain. ** Energy management capability requires purchase of additional hardware and service fee

Save big on energy without compromising guest comfort

FriedrichLink® thermostats are the advanced energy management solution for Friedrich Vert-I-Pak®

Real Time Motion and Thermal Occupancy Sensor

Integrated Occupancy Sensor uses a combination of **motion and thermal sensing technologies** for accurate occupancy detection at all times-no need to install additional devices such as door switches or sensors.

Wired or Wireless Installation

Wired or wireless connectivity with extensive configuration options deliver full compatibility and easy integration with virtually any packaged HVAC system.

5 Energy Savings Presets

5 distinct energy saving modes make it easy to choose the optimal energy saving settings for any property.

Remote Management*

Web-based remote management provides expansive solutions for remote monitoring and configuration from any computer connected to the Internet.

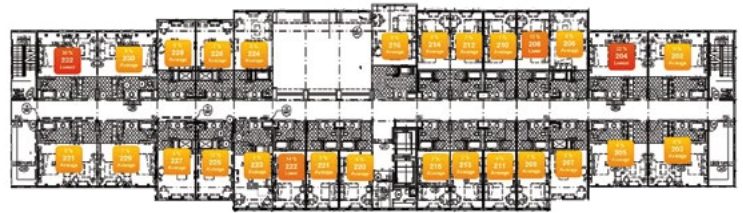
Built-in Wireless Networking enables remote management without using or interfering with property's existing wireless infrastructure. True mesh networking eliminates the need for additional networking equipment such as signal repeaters or multiple data collection boxes.



Friedrich's **EMRT2, EMWRT2, VRPXEMRT2** and **VRPXEMWRT2** thermostats use real-time motion and thermal occupancy detection to save energy.

When the room is unoccupied, the thermostat automatically adjusts the temperature to eliminate unnecessary heating and cooling.

Monitor room status and see the operation, occupancy and energy efficiency status of each room.



*Requires an optional "Online Connection Kit" and a one-time license fee.

Advanced Energy Saving Features

Fully configurable energy saving modes maximize energy savings without compromising guest comfort.

Temperature setback automatically adjusts the temperature when the room is unoccupied in order to save energy.

Temperature recovery calculates the setback temperature so that the desired temperature can be restored within specified time.

Setback optimization continuously monitors temperature recovery rate in the room and adjusts setback temperature to maximize energy savings.

Setback limits allow maximum and minimum room temperature to be set when the room is unoccupied.

Setpoint limits prevent guests from setting room temperature to extreme, energy-wasting levels.

Room status displays operation, occupancy and energy efficiency status of each room.

Room detail displays temperature and occupancy changes in a room.

Energy reports monitor energy use and can even evaluate the performance of energy saving features.

Intuitive interface makes it easy to apply different settings to different rooms.

User management allows configuration of custom access permissions and alert notification settings for different users.

Built-in diagnostic tools automatically send email alert notifications to hotel staff.


FriedrichLink® For Lodging

ARCHITECTURAL LOUVER

VPAL2 and VPSC2

Extruded aluminum grille that attaches to the outdoor section of the wall plenum. VPSC2 can be ordered in custom colors.

DIMENSIONS: 25⁹/₁₆" W x 31¹/₁₆" H



VPAL2



VPAWP1-8/14

WALL PLENUM (REQUIRED)

VPAWP1-8, VPAWP1-14

Two-part sleeve that telescopes in and out; sits inside the exterior wall penetration.

VPAWP1-8 telescopes from 5¹/₂" – 8"

VPAWP1-14 telescopes from 8" – 14"

DIMENSIONS: 24¹/₈" W x 30³/₈" H

CUTOUT DIMENSIONS: 24⁵/₈" W x 30⁷/₈" H

RETURN AIR GRILLE/ACCESS PANEL/SOLID DOOR ACCESS PANEL

VPRG4/VPRG4R/VPRG4SD

Hinged panel allows access to unit and return air filter.

A field-supplied filter (25" x 20") should be mounted on the inside grille.

Panel can be mounted with return air openings high or low on the door for optimum sound attenuation. VPRG4SD is a solid door panel. VPRG4 is a default left in-swing, the VPRG4R is a right in-swing.

DIMENSIONS: 29" W x 58" H

CUTOUT DIMENSIONS: 27" W x 55³/₄" H



VPRG4/VPRG4R



VPRG4SD

FIRST COMPANY SLEEVE ADAPTER

VPASA1

Single piece, welded adapter allows retrofit into existing First Company® SPXR-series single package vertical unit wall sleeve and louver. Easily connects to Friedrich chassis. Only compatible with Friedrich's smaller sized VPAK 9k and 12k units.

DRAIN PAN (REQUIRED FOR VHA18 AND VHA24 MODELS)

VPDP2

For VHA18 & VHA24 models. Must be installed prior to chassis for easy installation/removal.



VPASA1



VPDP2

SINGLE STAGE THERMOSTATS

RT7P

Wired, single stage, wall-mounted programmable thermostat with two fan speeds and backlight. Controls Friedrich VERT-I-PAK.

RT7

Wired, single stage, wall-mounted digital thermostat with two fan speeds and backlight. Controls Friedrich VERT-I-PAK.

WRT2

Wireless, single stage, wall-mounted programmable thermostat with two fan speeds and backlight. Controls Friedrich VERT-I-PAK.



RT7P



RT7



WRT2



EMRT2, EMWRT2

ENERGY MANAGEMENT THERMOSTATS

EMRT2/EMWRT2

Wired/Wireless thermostat with occupancy sensor.

EMOCT

Online connection kit.

EMRAF

Remote access fee.

EMROS

Remote Occupancy Sensor

EMRTS

Remote Temperature

EMRDS

SensorDoor Switch

EMCWP

Wall Plate

EMRWOS

Wireless Occ. Sensor

Friedrich Vert-I-Pak® with *FreshAir®* IAQ

The COVID-19 global pandemic is transforming the way the lodging industry meets the comfort and safety needs for guests. As your room air experts, Friedrich remains committed to improving guest comfort and safety with our newest innovation, FreshAir® IAQ solutions - a suite of indoor air quality accessories for use with Friedrich Air Conditioners, all with one dedicated purpose - healthy indoor air. FreshAir® IAQ solutions incorporate ASHRAE-recommended protocol* to address indoor air quality and airborne transmissions.

This suite of products include industry-leading air quality technologies such as MERV 13 filtration, UV germicidal light and bi-polar ionization. Together, they represent a major leap forward in integrated HVAC air purification and rebuilding confidence for indoor environments.

*Based on ASHRAE Guidance for Building Operations During the COVID-19 Pandemic

FRESH Aire® MERV 13 FILTRATION

FreshAir MERV 13 filtration is effective at capturing and removing microorganisms from the air, which according to ASHRAE*, the leading authority on the science behind advanced indoor air quality, include harmful airborne viruses.



FRESH Aire® MERV 13 FILTER KITS

VPXFK-2

Filter bracket kit for 2" deep filters (up to MERV 13) - includes gasket and 2" MERV 13 filter

VPFKU

Telescoping filter bracket for 2" - 4" deep filters (up to MERV 13) - includes gasket

FRESH Aire® PURIFIER APWR1

FreshAir® Purifier by iWaves features needlepoint bi-polar ionization to address any mold, bacteria, virus, allergens, and VOC's that may be in your air stream to ensure delivery of healthy, clean, purified air.



FRIEDRICH® UV UVT1

Germicidal UV light kits have been tested and certified for use on Friedrich Vert-I-Paks. The UV kit can be installed on the evaporator coil and is designed to disinfect surfaces and the air as it circulates through the ventilation system. UV light can kill airborne bacteria, viruses, mold, reduce maintenance costs and extend the life of an HVAC system



OUTSIDE AIR VENTILATION

All Friedrich Vert-I-Pak units are manufactured featuring passive outside air ventilation. Up to 60 CFM of fresh outside air can be brought into the space during unit operation.

*Based on ASHRAE Guidance for Building Operations During the COVID-19 Pandemic

VERT-I-PAK® | SPECIFICATIONS

MODEL	VHA09K		VHA09R		VHA12K		VHA12R		VHA18K		VHA18R		VHA24K		VHA24R	
COOLING DATA																
TOTAL COOLING CAP.	9300		9300		11500		11500		18400		18400		22500		22500	
SENSIBLE COOL CAP.	7440		7440		9085		9085		13430		13430		15750		15750	
POWER (W)	845		845		1045		1045		1670		1670		2045		2045	
EER	11.0		11.0		11.0		11.0		11.0		11.0		11.0		11.0	
HEATER SIZE (kW)	2.5/3.4/5.0		2.5/3.4/5.0		2.5/3.4/5.0		2.5/3.4/5.0		2.5/3.4/5.0/7.5		2.5/3.4/5.0/7.5		2.5/3.4/5.0/7.5/10.0		2.5/3.4/5.0/7.5/10.0	
HEAT PUMP DATA																
REVERSE HEATING BTU	8300		8300		10600		10600		16700		16700		19500		19500	
COP @ 47F	3.3		3.3		3.3		3.3		3.3		3.3		3.3		3.3	
HEATING POWER (W)	730		730		940		940		1480		1480		1732		1732	
HEATING CURRENT (A)	3.6		3.1		4.5		3.7		7.0		6.1		9.2		9.2	
ELECTRICAL DATA																
VOLTAGE (1 PHASE, 60 HZ)	208-230		265		208-230		265		208-230		265		208-230		265	
VOLT RANGE	197-253		239-292		197-253		239-292		197-253		239-292		197-253		239-292	
COOLING CURRENT (A)	4.1		3.5		4.9		4.0		7.9		7.0		10.5		10.5	
AMPS L.R	21.0		21.0		23.0		23.0		37.0		37.0		44.0		44.0	
INDOOR MOTOR (HP)	1/4		1/4		1/4		1/4		1/4		1/4		1/5		1/5	
INDOOR MOTOR (A)	1.2		1.2		1.2		1.2		0.42		0.42		1.4		1.4	
OUTDOOR MOTOR (HP)	—		—		—		—		1/4		1/4		1/4		1/4	
OUTDOOR MOTOR (A)	—		—		—		—		1.6		1.6		1.7		1.7	
PHYSICAL																
DIMENSIONS (W x D x H)	23"x 23"x 32"		23"x 23"x 32"		23"x 23"x 32"		23"x 23"x 32"		23"x 23"x 47"		23"x 23"x 47"		23"x 23"x 52"		23"x 23"x 52"	
NET WEIGHT (LBS)	142		144		147		149		190		192		225		227	
SHIPPING WEIGHT (LBS)	164		166		169		171		216		218		251		253	
TEST SETTING	LOW		LOW		LOW		LOW		LOW		LOW		LOW		LOW	
R410A CHARGE (OZ)	38.0		38.0		42.1		42.1		58.5		58.5		62		62	
AIRFLOW DATA																
INDOOR CFM	LOW	HIGH	LOW	HIGH	LOW	HIGH	LOW	HIGH	LOW	HIGH	LOW	HIGH	LOW	HIGH	LOW	HIGH
.10" ESP	430	490	430	490	430	490	430	490	630	675	630	675	660	700	660	700
.15" ESP	410	470	410	470	410	470	410	470	595	640	595	640	615	665	615	665
.20" ESP	360	440	360	440	360	440	360	440	550	600	550	600	575	625	575	625
.25" ESP	310	400	310	400	310	400	310	400	505	550	505	550	525	580	525	580
.30" ESP	260	350	260	350	260	350	260	350	455	500	455	500	485	540	485	540
.35" ESP	-	-	-	-	-	-	-	-	400	445	400	445	450	500	450	500
.40" ESP	-	-	-	-	-	-	-	-	345	400	345	400	415	465	415	465
VENT CFM																
UP TO " " CFM	60	60	60	60	60	60	60	60	60	60	60	60	60	60	60	60

NOTES:

Cooling Standards: 95°F DB/75°F WB outdoor, 80°F DB/67°F WB indoor

Heating Standards: 47°F DB/43°F WB outdoor, 70°F DB/60°F WB indoor

Normal Value Wet Coil @ .1" ESP.

Rated CFM at Low Speed: VHA09....430 VHA12....430

VHA18....600 VHA24....655

Due to continuing research in new energy-saving technology, specifications are subject to change without notice.



LINKS TO INSTALLATION/OPERATION MANUALS



All VERT-I-PAK Models
MERV 13 Filter Bracket Installation
VPDP1 Accessory
VPDP2 Accessory
VPAL2 Accessory
VPRG4 Accessory
VPASA1 Accessory
RT6 Accessory
RT6P Accessory
RT7 Accessory
RT7P Accessory
EMRT2 Accessory
EMWRT2 Accessory
WRT1 Accessory
WRT2 Accessory
EMOCT Accessory
VPG4



FRIEDRICH