

**Revision A:**

- NTXSST09/12/15A112AB and NTYSST09/12/15A112AB have been added.

OBBT733 is void.

OUTDOOR UNIT

PARTS CATALOG

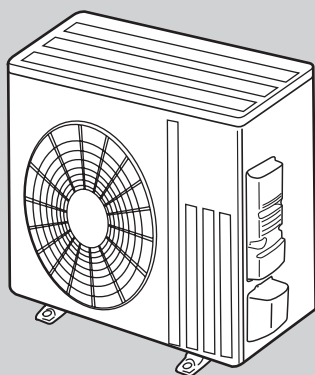
No. OBBT733
REVISED EDITION-A

Models

NTXSST09A112AA
NTXSST12A112AA
NTXSST15A112AA
NTXSST18A112AA
NTXSST24A112AA
NTYSST09A112AA
NTYSST12A112AA
NTYSST15A112AA
NTYSST18A112AA
NTYSST24A112AA

NTXSST09A112AB
NTXSST12A112AB
NTXSST15A112AB

NTYSST09A112AB
NTYSST12A112AB
NTYSST15A112AB



NTXSST18A112AA
NTXSST24A112AA
NTYSST18A112AA
NTYSST24A112AA

CONTENTS

1. SERVICE PARTS LIST 2
2. OPTIONAL PARTS 10

SERVICE MANUAL (OBBT733)

Revision A:

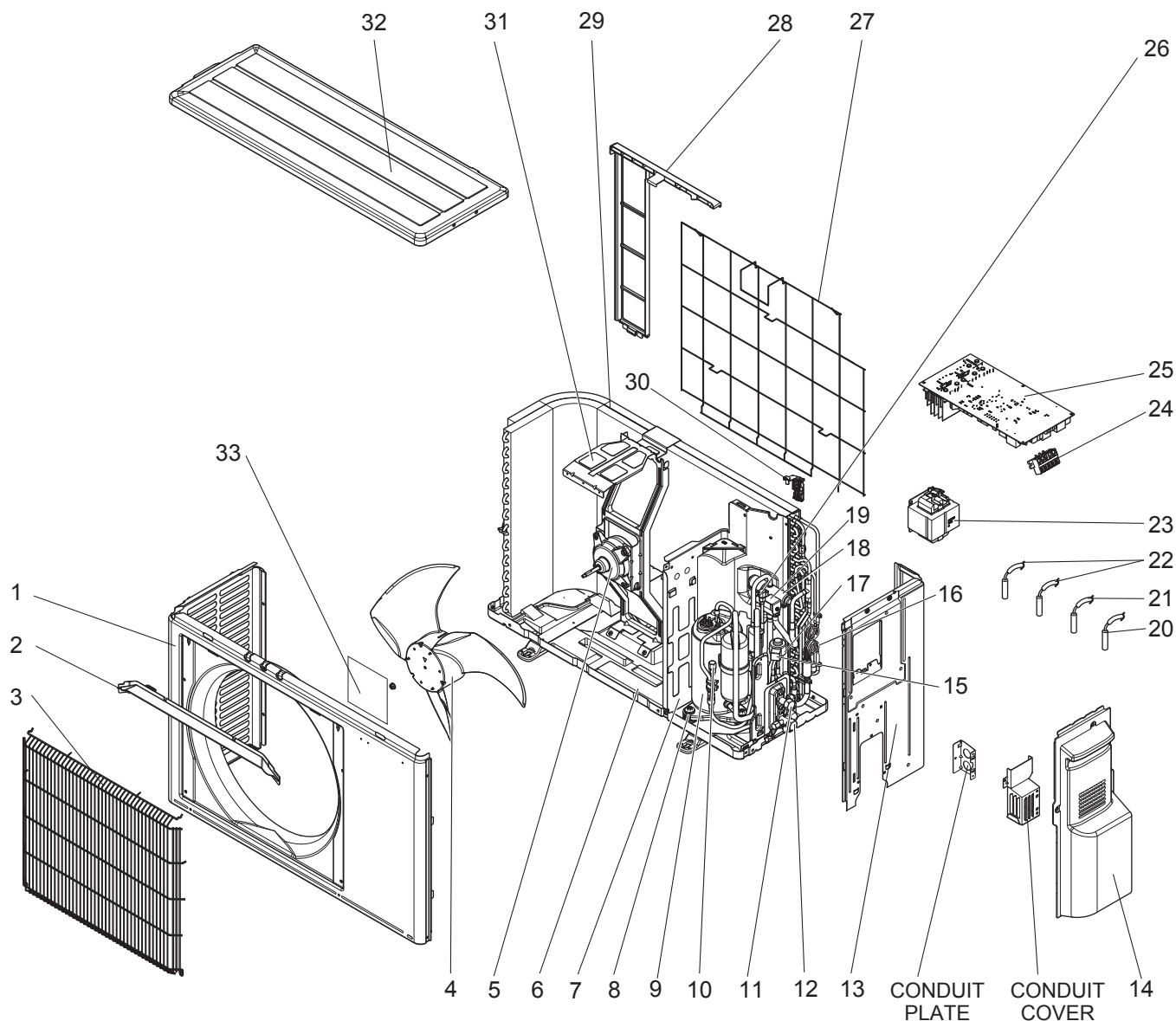
• NTXSST09/12/15A112AB and NTYSST09/12/15A112AB have been added.

1

SERVICE PARTS LIST

NTXSST09A112AA NTXSST09A112AB NTXSST12A112AA NTXSST12A112AB
NTXSST15A112AA NTXSST15A112AB

1-1. OUTDOOR UNIT STRUCTURAL PARTS, ELECTRICAL PARTS AND FUNCTIONAL PARTS



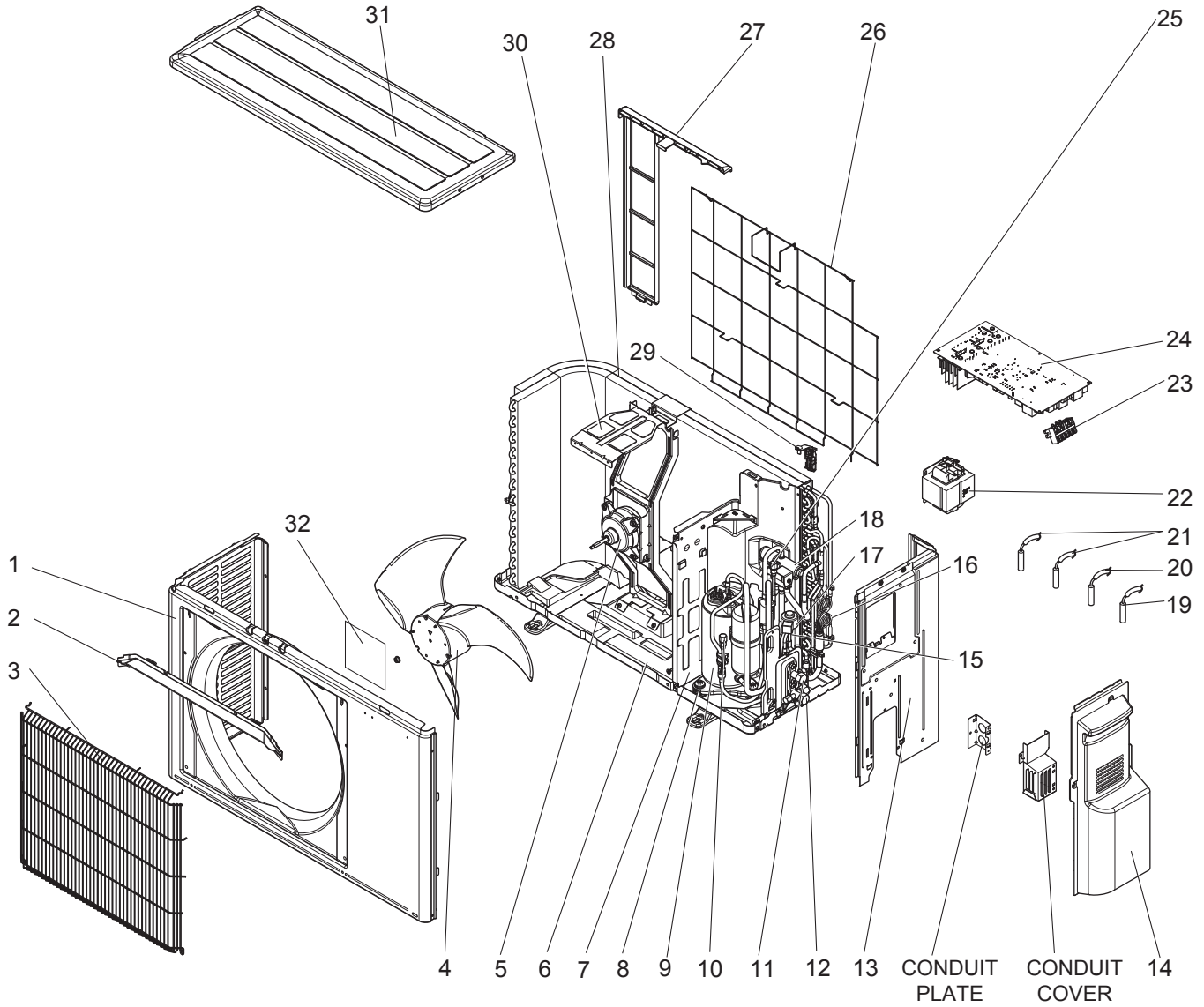
1-1. OUTDOOR UNIT STRUCTURAL PARTS, ELECTRICAL PARTS AND FUNCTIONAL PARTS

Part number that is circled is not shown in the illustration.

No.	Part No.	Part Name	Symbol in Wiring Diagram	Q'ty/unit NTXSST						Remarks
				09A112AA	09A112AB	12A112AA	12A112AB	15A112AA	15A112AB	
1	U01 A01 232	CABINET		1	1	1	1	1	1	
2	U01 A01 531	ICE GUARD		1	1	1	1	1	1	
3	U01 A01 521	GRILLE (OUT)		1	1	1	1	1	1	
4	U01 A01 501	PROPELLER FAN		1	1	1	1	1	1	
5	U01 A01 301	OUTDOOR FAN MOTOR	MF	1		1		1		RC0J55-□□
5	U01 A03 301	OUTDOOR FAN MOTOR	MF		1		1		1	RC0J55-□□
6	U01 A02 290	BASE		1	1	1	1	1	1	
7	U01 A02 293	SEPARATOR		1	1	1	1	1	1	
8	U01 A01 506	COMP. RUBBER SET		3	3	3	3	3	3	3 RUBBERS/SET
9	U01 A03 900	COMPRESSOR (KNB073FRVMC)	MC	1						KNB073FRVMC
9	U01 A07 900	COMPRESSOR (KNB073FRXMC)	MC		1					KNB073FRXMC
9	U01 A01 900	COMPRESSOR (SNB092FQAMT)	MC			1	1			SNB092FQAMT
9	U01 A04 900	COMPRESSOR (SNB130FQBMT)	MC					1	1	SNB130FQBMT
10	U01 A01 641	SERVICE PORT (L)		1	1	1	1	1	1	
11	U01 A01 662	STOP VALVE (LIQUID)		1	1	1	1	1	1	ø1/4 (ø6.35)
12	U01 A02 661	STOP VALVE (GAS)						1	1	ø1/2 (ø12.7)
12	U01 A01 661	STOP VALVE (GAS)		1	1	1	1			ø3/8 (ø9.52)
13	U01 A01 233	BACK PANEL (OUT)		1	1	1	1	1	1	
14	U01 A01 245	SERVICE PANEL		1	1	1	1	1	1	
15	U01 A01 640	EXPANSION VALVE		1		1		1		
15	U01 001 401	EXPANSION VALVE			1		1		1	
16	U01 A01 936	CAPILLARY TUBE		4	4	4	4	4	4	O.D. 0.118 × I.D. 0.079 × 8-9/32 (ø3.0 × ø2.0 × 210)
17	U01 A01 493	EXPANSION VALVE COIL	LEV	1	1	1	1	1	1	
18	U01 A02 961	4-WAY VALVE		1						
18	U01 A04 961	4-WAY VALVE			1		1			
18	U01 A01 961	4-WAY VALVE				1		1	1	
19	U01 A01 490	R.V. COIL	21S4	1		1		1	1	
19	U01 A03 490	R.V. COIL	21S4		1		1			
20	U01 A03 308	THERMISTOR AMBIENT TEMPERATURE	RT65	1	1	1	1	1	1	
21	U01 A02 307	OUTDOOR HEAT EXCHANGER TEM- PERATURE THERMISTOR	RT68	1	1	1	1	1	1	
22	U01 A01 306	THERMISTOR SET	RT61, RT62	1	1	1	1	1	1	DEFROST,DISCHARGE TEMPERATURE
23	U01 A02 337	REACTOR	L61	1	1					
23	U01 A01 337	REACTOR	L61			1	1	1	1	
24	U01 A01 374	TERMINAL BLOCK	TB	1	1	1	1	1	1	5 P
25	U01 A10 451	INVERTER P.C. BOARD		1						Includes heat sink and RT64
25	U01 A11 451	INVERTER P.C. BOARD				1				
25	U01 A12 451	INVERTER P.C. BOARD						1		
25	U01 A43 451	INVERTER P.C. BOARD			1					
25	U01 A44 451	INVERTER P.C. BOARD					1			
25	U01 A45 451	INVERTER P.C. BOARD							1	
26	U01 A02 641	SERVICE PORT (H)		1	1	1	1	1	1	
27	U01 A01 525	CONDENSER WIRE NET		1	1	1	1	1	1	
28	U01 A01 523	CONDENSER NET		1	1	1	1	1	1	
29	U01 A01 630	OUTDOOR HEAT EXCHANGER		1	1	1	1	1	1	
30	U01 A02 079	THERMO HOLDER		1	1	1	1	1	1	
31	U01 A01 515	MOTOR SUPPORT		1	1	1	1	1	1	
32	U01 A01 297	TOP PANEL		1	1	1	1	1	1	
33	U01 T01 987	LOGO LABEL (TRANE)		1	1	1	1	1	1	
③4	U01 A03 936	CAPILLARY TUBE		1	1					O.D. 0.118 × I.D. 0.079 × 9-7/16 (ø3.0 × ø2.0 × 240)
	U01 A02 936	CAPILLARY TUBE				1	1	1	1	O.D. 0.157 × I.D. 0.094 × 9-7/16 (ø4.0 × ø2.4 × 240)

NTYSST09A112AA NTYSST09A112AB NTYSST12A112AA NTYSST12A112AB
NTYSST15A112AA NTYSST15A112AB

1-2. OUTDOOR UNIT STRUCTURAL PARTS, ELECTRICAL PARTS AND FUNCTIONAL PARTS



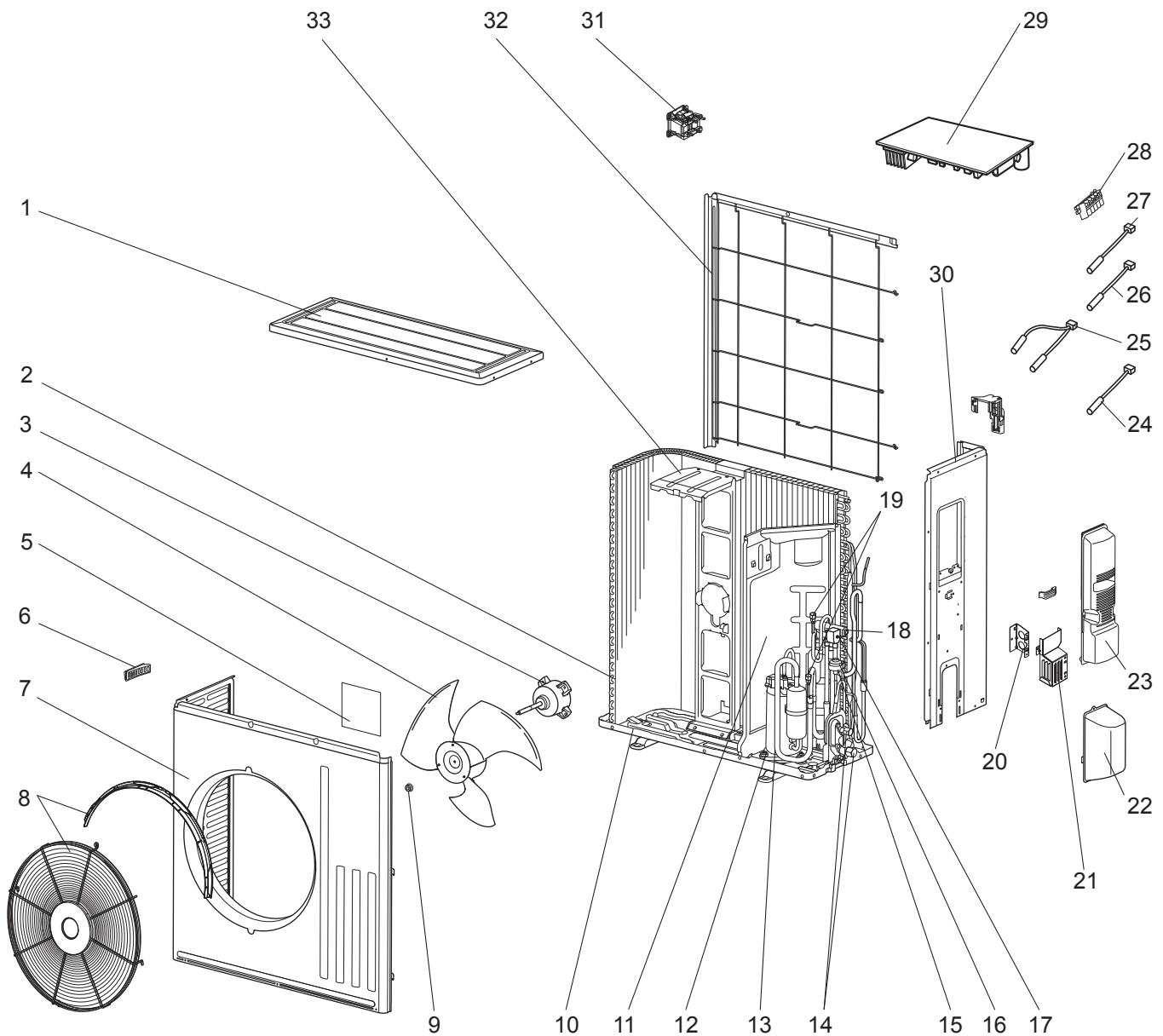
1-2. OUTDOOR UNIT STRUCTURAL PARTS, ELECTRICAL PARTS AND FUNCTIONAL PARTS

Part number that is circled is not shown in the illustration.

No.	Part No.	Part Name	Symbol in Wiring Diagram	Q'ty/unit NTYSST						Remarks
				09A112AA	09A112AB	12A112AA	12A112AB	15A112AA	15A112AB	
1	U01 A01 232	CABINET		1	1	1	1	1	1	
2	U01 A01 531	ICE GUARD		1	1	1	1	1	1	
3	U01 A01 521	GRILLE (OUT)		1	1	1	1	1	1	
4	U01 A01 501	PROPELLER FAN		1	1	1	1	1	1	
5	U01 A01 301	OUTDOOR FAN MOTOR	MF	1		1		1		RC0J55-□□
5	U01 A03 301	OUTDOOR FAN MOTOR	MF		1		1		1	RC0J55-□□
6	U01 A02 290	BASE		1	1	1	1	1	1	
7	U01 A02 293	SEPARATOR		1	1	1	1	1	1	
8	U01 A01 506	COMP. RUBBER SET		3	3	3	3	3	3	3 RUBBERS/SET
9	U01 A03 900	COMPRESSOR (KNB073FRVMC)	MC	1						KNB073FRVMC
9	U01 A07 900	COMPRESSOR (KNB073FRXMC)			1					KNB073FRXMC
9	U01 A01 900	COMPRESSOR (SNB092FQAMT)				1	1			SNB092FQAMT
9	U01 A04 900	COMPRESSOR (SNB130FQBMT)						1	1	SNB130FQBMT
10	U01 A01 641	SERVICE PORT (L)		1	1	1	1	1	1	
11	U01 A01 662	STOP VALVE (LIQUID)		1	1	1	1	1	1	ø1/4 (ø6.35)
12	U01 A02 661	STOP VALVE (GAS)						1	1	ø1/2 (ø12.7)
12	U01 A01 661	STOP VALVE (GAS)		1	1	1	1			ø3/8 (ø9.52)
13	U01 A01 233	BACK PANEL		1	1	1	1	1	1	
14	U01 A01 245	SERVICE PANEL		1	1	1	1	1	1	
15	U01 A01 640	EXPANSION VALVE		1		1		1		
15	U01 001 401	EXPANSION VALVE			1		1		1	
16	U01 A01 936	CAPILLARY TUBE		4	4	4	4	4	4	O.D. 0.118 × I.D. 0.079 × 8-9/32 (ø3.0 × ø2.0 × 210)
17	U01 A01 493	EXPANSION VALVE COIL	LEV	1	1	1	1	1	1	
18	U01 A01 961	4-WAY VALVE		1		1		1	1	
18	U01 A04 961	4-WAY VALVE			1		1			
19	U01 A03 308	THERMISTOR AMBIENT TEMPERATURE	RT65	1	1	1	1	1	1	
20	U01 A02 307	OUTDOOR HEAT EXCHANGER TEM- PERATURE THERMISTOR	RT68	1	1	1	1	1	1	
21	U01 A01 309	DISCHARGE TEMPERATURE THERMISTOR	RT62	1	1	1	1	1	1	
22	U01 A02 337	REACTOR	L61	1	1					
22	U01 A01 337	REACTOR	L61			1	1	1	1	
23	U01 A01 374	TERMINAL BLOCK	TB	1	1	1	1	1	1	5 P
24	U01 A10 451	INVERTER P.C. BOARD		1						Includes heat sink and RT64
24	U01 A11 451	INVERTER P.C. BOARD				1				
24	U01 A12 451	INVERTER P.C. BOARD						1		
24	U01 A46 451	INVERTER P.C. BOARD			1					
24	U01 A47 451	INVERTER P.C. BOARD					1			
24	U01 A48 451	INVERTER P.C. BOARD							1	
25	U01 A02 641	SERVICE PORT (H)		1	1	1	1	1	1	
26	U01 A01 525	CONDENSER WIRE NET		1	1	1	1	1	1	
27	U01 A01 523	CONDENSER NET		1	1	1	1	1	1	
28	U01 A01 630	OUTDOOR HEAT EXCHANGER		1	1	1	1	1	1	
29	U01 A02 079	THERMO HOLDER		1	1	1	1	1	1	
30	U01 A01 515	MOTOR SUPPORT		1	1	1	1	1	1	
31	U01 A01 297	TOP PANEL		1	1	1	1	1	1	
32	U01 T01 987	LOGO LABEL (TRANE)		1	1	1	1	1	1	
③③	U01 A03 936	CAPILLARY TUBE		1	1					O.D. 0.118 × I.D. 0.079 × 9-7/16 (ø3.0 × ø2.0 × 240)
③③	U01 A02 936	CAPILLARY TUBE				1	1	1	1	O.D. 0.157 × I.D. 0.094 × 9-7/16 (ø4.0 × ø2.4 × 240)

NTXSST18A112AA NTYSST18A112AA

1-3. OUTDOOR UNIT STRUCTURAL PARTS, ELECTRICAL PARTS AND FUNCTIONAL PARTS



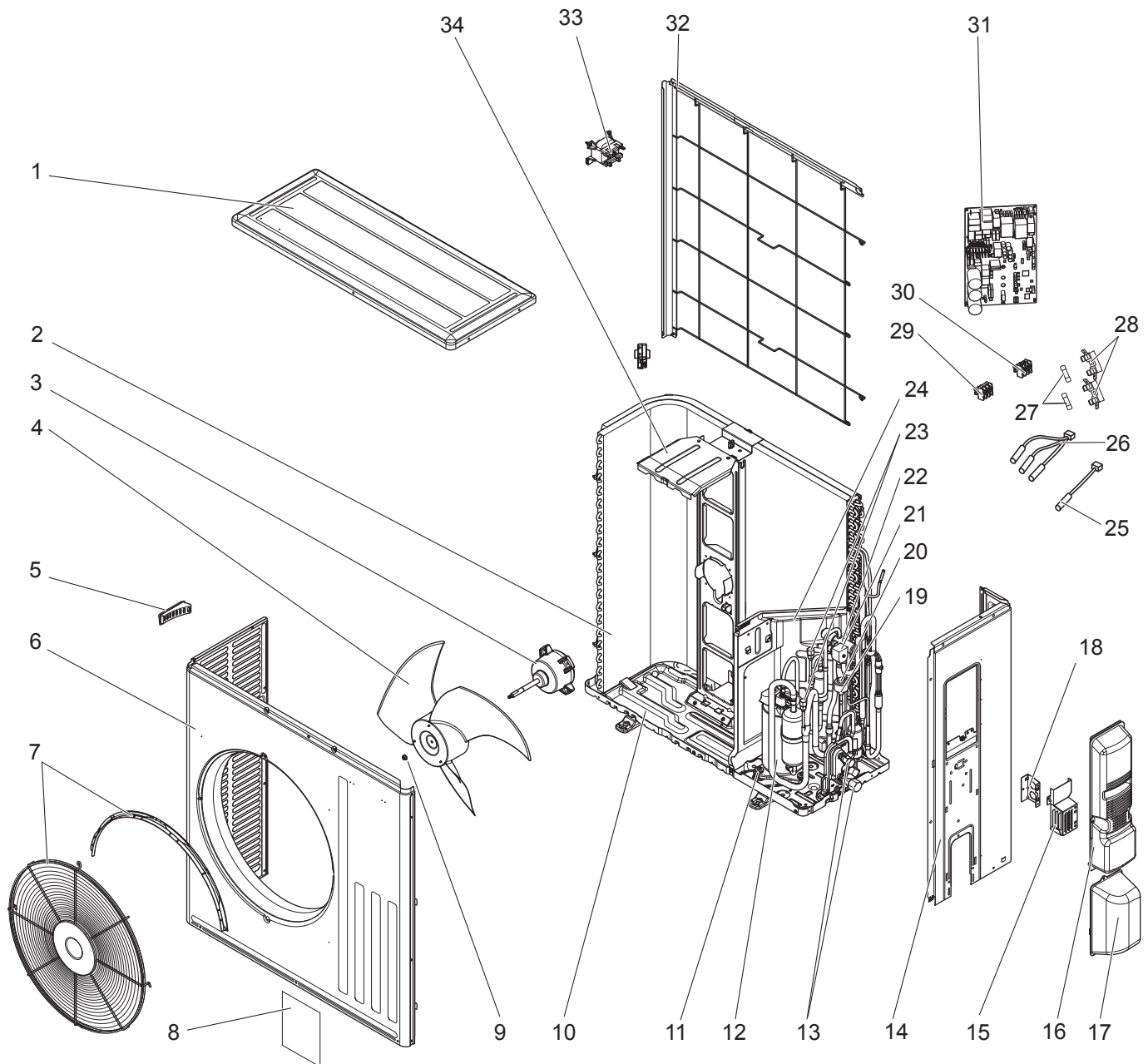
1-3. OUTDOOR UNIT STRUCTURAL PARTS, ELECTRICAL PARTS AND FUNCTIONAL PARTS

Part numbers that are circled are not shown in the illustration.

No.	Part No.	Part Name	Symbol in Wiring Diagram	Q'ty/unit		Remarks
				NTXSST	NTYSST	
				18A112AA	18A112AA	
1	E22 L87 297	TOP PANEL		1	1	
2	E22 N94 630 E22 29F 630	OUTDOOR HEAT EXCHANGER		1	1	
3	E22 N87 301	OUTDOOR FAN MOTOR	MF	1	1	RC0J77-□□
4	E22 F28 501	PROPELLER FAN		1	1	
5	—	BRAND LABEL (TRANE)		1	1	DK79G293H01
6	E22 817 009	HANDLE		1	1	
7	E22 N94 232	CABINET		1	1	
8	E22 29F 521 E22 N94 521	FAN GUARD		1	1	Includes ice guard
9	E27 L05 508	PROPELLER FAN NUT		1	1	
10	E22 F28 290	BASE		1	1	
11	E22 29F 293	SEPARATOR		1	1	
12	E22 C34 506	COMPRESSOR RUBBER SET		3	3	3 RUBBERS/SET
13	E22 N94 900	COMPRESSOR	MC	1	1	SNB130FQBMT
14	E22 38F 663	STOP VALVE ASSEMBLY		1	1	GAS: ø1/2 (ø12.7), LIQ: ø1/4 (ø6.35)
15	E22 29F 645	EXPANSION VALVE		1	1	Includes LEV body, Capillary tubes [O.D. 0.157 × I.D. 0.094 × 7-7/8 (ø4.0 × ø2.4 × 200), O.D. 0.118 × I.D. 0.079 × 7-7/8 (ø3.0 × ø2.0 × 200), O.D. 0.157 × I.D. 0.094 × 3-15/16 (ø4.0 × ø2.4 × 100)]
16	E22 F28 493	EXPANSION VALVE COIL	LEV	1	1	
17	E22 N91 490	R.V. COIL	21S4	1		
18	E22 A56 961	4-WAY VALVE		1	1	
19	E22 E79 641	SERVICE PORT		2	2	
20	E22 29F 978	CONDUIT PLATE		1	1	
21	E22 29F 979	CONDUIT COVER		1	1	
22	E22 F28 650	VALVE COVER		1	1	
23	E22 N94 245	SERVICE PANEL		1	1	
24	E22 29F 309	AMBIENT TEMPERATURE THERMISTOR	RT65	1	1	
25	E22 G16 308	THERMISTOR SET	RT61, RT62	1		DEFROST, DISCHARGE TEMPERATURE
26	E22 N94 308	DISCHARGE TEMPERATURE THERMISTOR	RT62		1	
27	E22 G16 307	OUTDOOR HEAT EXCHANGER TEMPERATURE THERMISTOR	RT68	1	1	
28	E22 L85 374	TERMINAL BLOCK	TB	1	1	5 P
29	E22 N91 451 E22 N94 451	INVERTER P.C. BOARD		1	1	Includes heat sink and RT64
30	E22 N94 233	BACK PANEL		1	1	
31	E22 H21 337 E22 N94 337	REACTOR	L61	1	1	
32	E22 L87 523	CONDENSER NET		1	1	
33	E22 F28 515	MOTOR SUPPORT		1	1	
34	—	PB SUPPORT		1	1	DY25A460G16
35	—	PB COVER		1	1	DY00B947G01
36	—	COMPRESSOR LEAD ASSEMBLY		1	1	DM00L834G16
37	—	COMPRESSOR FELT (TOP)		1	1	DQ33N559H03
38	—	COMPRESSOR FELT (BODY)		1	1	SU33V250H04

NTXSST24A112AA NTYSST24A112AA

1-4. OUTDOOR UNIT STRUCTURAL PARTS, ELECTRICAL PARTS AND FUNCTIONAL PARTS



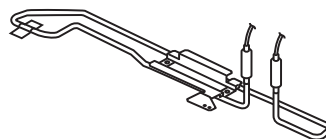
1-4. OUTDOOR UNIT STRUCTURAL PARTS, ELECTRICAL PARTS AND FUNCTIONAL PARTS

Part numbers that are circled are not shown in the illustration.

No.	Part No.	Part Name	Symbol in Wiring Diagram	Q'ty/unit		Remarks
				NTXSST	NTYSST	
				24A112AA	24A112AA	
1	E22 L87 297	TOP PANEL		1	1	
2	E22 T16 630 E22 42F 630	OUTDOOR HEAT EXCHANGER		1	1	
3	E22 F76 301	OUTDOOR FAN MOTOR	MF	1	1	RC0J77-□□
4	E22 F28 501	PROPELLER FAN		1	1	
5	E22 817 009	HANDLE		1	1	
6	E22 T16 232	CABINET		1	1	
7	E22 F73 521 E22 F28 521	FAN GUARD		1	1	Includes ice guard
8	—	BRAND LABEL (TRANE)		1	1	DK79G293H01
9	E27 L05 508	PROPELLER FAN NUT		1	1	
10	E22 F28 290	BASE		1	1	
11	E22 C34 506	COMPRESSOR RUBBER SET		3	3	3 RUBBERS/SET
12	E22 F76 900	COMPRESSOR	MC	1	1	SNB172FQKMT
13	E22 42F 663	STOP VALVE ASSEMBLY		1	1	LIQ: ø3/8 (ø9.52), GAS: ø5/8 (ø15.88)
14	E22 42F 233	BACK PANEL		1	1	
15	E22 43F 979	CONDUIT COVER		1	1	
16	E22 J61 245	SERVICE PANEL		1	1	
17	E22 F28 650	VALVE COVER		1	1	
18	E22 29F 978	CONDUIT PLATE		1	1	
19	E22 F28 493	EXPANSION VALVE COIL	LEV	1	1	
20	E22 43F 645 E22 42F 645	EXPANSION VALVE ASSEMBLY		1	1	Includes LEV body, Capillary tube [O.D. 0.157 × I.D. 0.094 × 3-15/16 (ø4.0 × ø2.4 × 100)]
21	E22 F76 490	R.V. COIL	21S4	1	1	
22	E22 A56 961	4-WAY VALVE		1	1	
23	E22 E79 641	SERVICE PORT (H, L)		2	2	
24	E22 R08 293	SEPARATOR		1	1	
25	E22 38F 309	AMBIENT TEMPERATURE THERMISTOR	RT65	1	1	
26	E22 F28 308	THERMISTOR SET	RT61, RT62, RT68	1		DEFROST, DISCHARGE TEMPERATURE, OUTDOOR HEAT EXCHANGER TEMPERATURE
	E22 F33 308		RT62, RT68		1	DISCHARGE TEMPERATURE, OUTDOOR HEAT EXCHANGER TEMPERATURE
27	E27 250 382	FUSE	F65, F66	2	2	T6.3AL250V
28	E27 001 241	FUSE HOLDER		2	2	
29	E22 L87 374	TERMINAL BLOCK	TB1	1	1	3 P
30	E22 T16 374	TERMINAL BLOCK	TB2	1	1	3 P
31	E22 T18 451 E22 T17 451	INVERTER P.C. BOARD		1	1	Includes heat sink and RT64
32	E22 L87 523	CONDENSER NET		1	1	
33	E22 F28 337	REACTOR	L	1	1	
34	E22 J52 515	MOTOR SUPPORT		1	1	
③⑤	—	ELECTRICAL PARTS BOX		1	1	DQ00N341GA2
③⑥	—	COMPRESSOR LEAD ASSEMBLY		1	1	DM00T997G06
③⑦	—	COMPRESSOR FELT (TOP)		1	1	DQ33N559H01
③⑧	—	COMPRESSOR FELT (BODY)		1	1	SU33V072H03

2-1. DEFROST HEATER

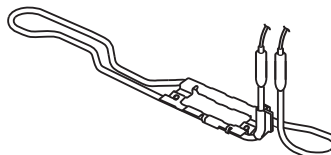
Model	Parts No.
NTXSST09A112AA NTXSST09A112AB NTXSST12A112AA NTXSST12A112AB NTXSST15A112AA NTXSST15A112AB	MAC-640BH-U



Components

① Defrost heater	1	④ Cable tie	1
② Aluminum tape	1	⑤ Self drilling screw	2
③ Heater support	1	⑥ Insulation	1

Model	Parts No.
NTXSST18A112AA NTXSST24A112AA	MAC-642BH-U1



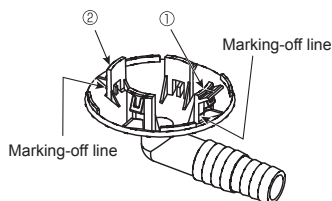
Components

① Defrost heater	1	④ Cable clamp	1
② Heater support	1	⑤ Self drilling screw	2
③ Cable tie	1	⑥ Wiring diagram	1

Note: Refer to the installation manual for the installation.

2-2. DRAIN SOCKET

Model	Parts No.
NTXSST09A112AA NTXSST09A112AB NTXSST12A112AA NTXSST12A112AB NTXSST15A112AA NTXSST15A112AB NTXSST18A112AA NTXSST24A112AA	MAC-860DS



Installing a Drain Socket

For $\Phi 1-5/8$ ($\Phi 42$) hole

Put the tab ① in the hole first, and then the tab ②.

MITSUBISHI ELECTRIC TRANE HVAC US LLC

HEAD OFFICE: 1340 SATELLITE BOULEVARD, SUWANEE, GA 30024, USA

© Copyright 2018 MITSUBISHI ELECTRIC CORPORATION

Issued: Jan. 2020. No. OBBT733 REVISED EDITION-A

Published: Dec. 2018. No. OBBT733

Made in Japan

Specifications are subject to change without notice.