

SUBMITTAL DATA: SEZ-KD15NA4**

15,000 BTU/H HORIZONTAL-DUCTED INDOOR UNIT FOR MXZ-B MULTI-ZONE HEAT-PUMP SYSTEMS

Job Name:	Location:	Date:
Purchaser:	Engineer:	
Submitted to:	For <input type="checkbox"/> Reference <input type="checkbox"/> Approval <input type="checkbox"/> Construction	
System Designation:	Schedule No.:	

****APPLIES TO INDOOR UNIT:**

- ☐ SEZ-KD15NA4
- ☐ SEZ-KD15NA4.TH
- ☐ SEZ-KD15NAR1.TH
- ☐ SEZ-KD15NA4R1.TH



Indoor Unit: SEZ-KD15NA4**

GENERAL FEATURES

- Horizontal-ducted indoor unit for concealed applications
- Ultra thin body: 7-7/8" high
- Built-in drain mechanism for condensate removal; lifts to 21-11/16"
- Air filter is included with indoor unit
- Quiet operation — as low as 23 dBA
- Indoor unit powered from outdoor unit using A-Control
- AUTO fan speed control
- Automatic restart following a power outage
- Limited warranty: five years parts and seven years compressors

ACCESSORIES
Indoor Unit

- ☐ Filter Box with MERV 8 Filters (FBL1-2)
- ☐ Bottom Return Plate (BRP-2)

Controller Options

- ☐ Wireless Wall-mounted Remote Controller Kit (MHK1)*
- ☐ Portable Central Controller (MCCH1)*
- ☐ Outdoor Air Sensor (MOS1)*
- ☐ Wired Wall-mounted Controller (PAR-31MAA)*
- ☐ Simple MA Remote Controller (PAC-YT53CRAU)*

*See Submittal for information on each option.

- ☐ Remote Temperature Sensor (M21-JKO-307)
- ☐ Hand-held Wireless Remote Controller (PAR-FL32MA; req. PAR-FA32MA-E)
- ☐ Wireless Signal Receiver PAR-FA32MA (for PAR-FL32MA)
- ☐ Lockdown Bracket for Hand-held Controller (RCMKP1CB)

SPECIFICATIONS

Cooling Capacity* 14,100 Btu/h
Heating Capacity at 47°F* 18,000 Btu/h

*** Rating Conditions per AHRI Standard**

Cooling | Indoor: 80° F (27° C) DB / 67° F (19° C) WB
Cooling | Outdoor: 95° F (35° C) DB / 75° F (24° C) WB
Heating at 47°F | Indoor: 70° F (21° C) DB / 60° F (16° C) WB
Heating at 47°F | Outdoor: 47° F (8° C) DB / 43° F (6° C) WB

(For data on specific indoor units [all ducted, all non-ducted, and both ducted and non-ducted] combinations, see the MXZ-B Technical and Service Manual.)

Electrical Requirements

Power Supply 208 / 230V, 1-Phase, 60 Hz
MCA 1 A

Voltage

Indoor - Outdoor S1-S2 AC 208 / 230V
Indoor - Outdoor S2-S3 DC ±24V

Blower Motor (ECM) 0.74 F.L.A.

Airflow (Lo - Med - Hi)

Cooling 353 - 441 - 529 Dry CFM
317 - 396 - 476 Wet CFM
Heating 353 - 441 - 529 CFM

Sound Pressure Level (Lo - Med - Hi)

Cooling 30 - 34 - 37 dB(A)
Heating 30 - 34 - 37 dB(A)

DIMENSIONS	UNIT INCHES / MM
W	39 / 990
D	27-9/16 / 700
H	7-7/8 / 200

Weight54 lbs. / 24 kg
External Finish Galvanized-steel Sheets
Field Drainpipe Size O.D.1-1/4" / 32 mm

Refrigerant Type R410A
Refrigerant Pipe Size O.D.

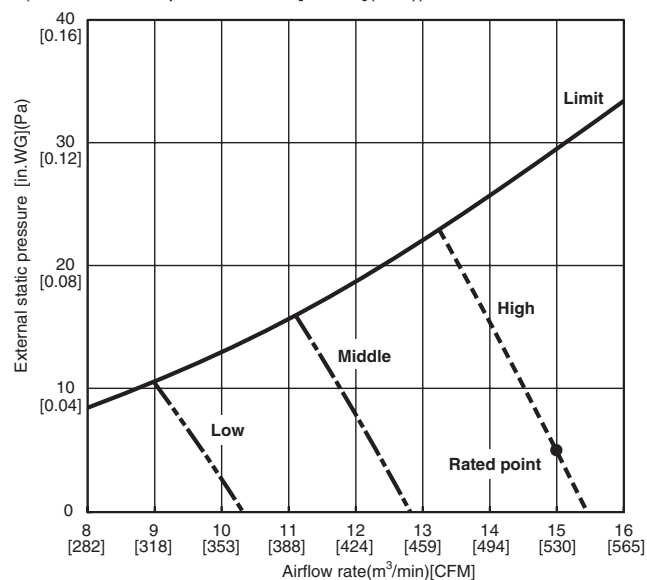
Gas Side 1/2" / 12.7 mm
Liquid Side 1/4" / 6.35 mm
Connection Method Flared



SEZ-KD15NA4** INDOOR FAN PERFORMANCE AND CORRECTED AIR FLOW CHARTS

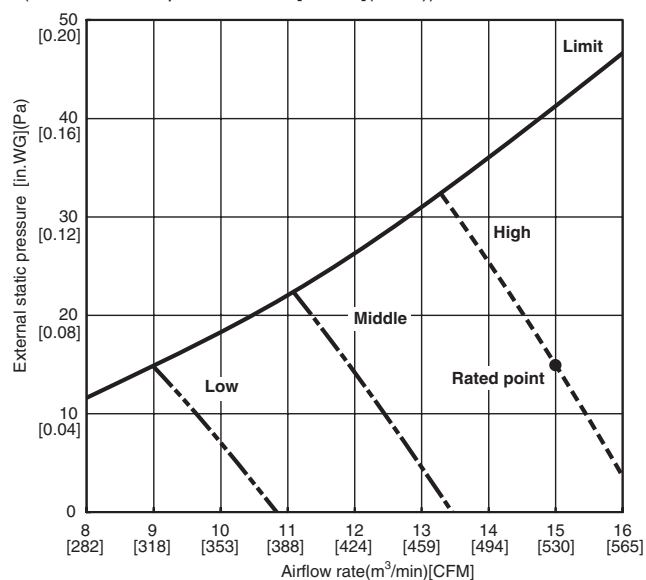
SEZ-KD15NA4

(External static pressure 0.02[in.WG](5Pa)) 208/230V 60Hz



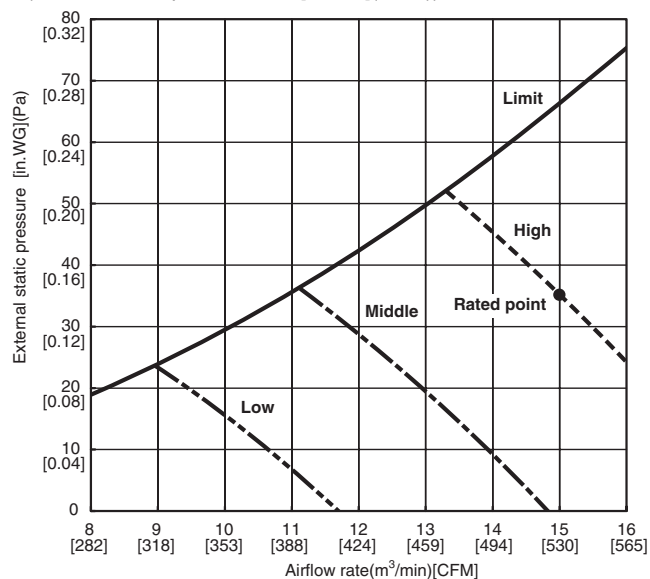
SEZ-KD15NA4

(External static pressure 0.06[in.WG](15Pa)) 208/230V 60Hz



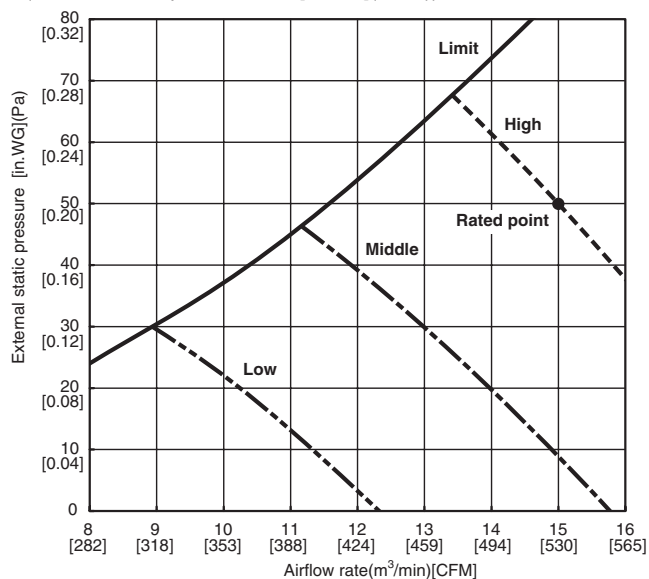
SEZ-KD15NA4

(External static pressure 0.14[in.WG](35Pa)) 208/230V 60Hz



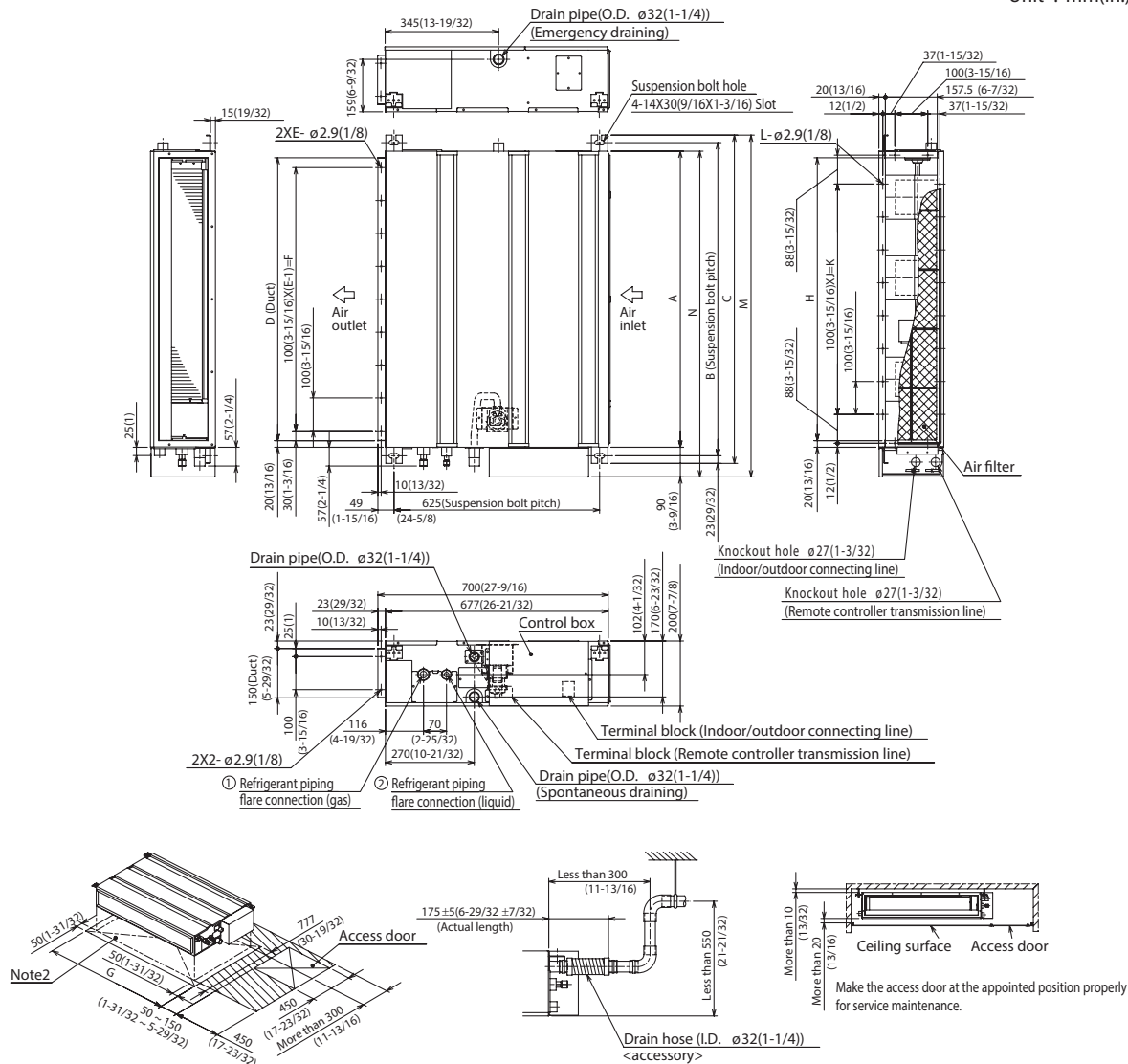
SEZ-KD15NA4

(External static pressure 0.20[in.WG](50Pa)) 208/230V 60Hz



DIMENSIONS: SEZ-KD15NA4**

Unit : mm(in.)



Required space for service and maintenance

															mm(in.)	
Model	A	B	C	D	E	F	G	H	J	K	L	M	N	① Gas pipe	② Liquid pipe	
SEZ-KD09NA4**	770(6)	752(5)	798(31/16)	660(26)	7	600(23-5/8)	600(31-1/2)	660(26)	5	500(19-11/16)	16	839(33)	790(31-1/8)	ø9.52(3/8)	ø6.35(1/4)	
SEZ-KD12NA4**	900(7)	872(5)	998(39/16)	838(7/8)	9	800(31-1/2)	800(39-3/8)	860(33-7/8)	7	700(27-9/16)	20	1039(40-29/32)	990(39)			
SEZ-KD15NA4**	970(8)	952(7)	1098(43/16)	906(35/16)	11	1000(39-3/8)	1200(47-1/8)	1060(41-5/8)	9	900(35-3/8)	24	1239(48-27/32)	1190(46-7/8)			
SEZ-KD18NA4**	1100(8-5/8)	1152(45/16)	1198(47-1/8)	1060(41-5/8)	11	1000(39-3/8)	1200(47-1/8)	1060(41-5/8)	9	900(35-3/8)	24	1239(48-27/32)	1190(46-7/8)	ø12.7(1/2)		

Note1. Use M10 screw for the suspension bolt (field supply).
 2. Keep the service space for the maintenance at the bottom.
 3. This chart indicates for SEZ-KD15NA4** model, which has 3 fans.
 SEZ-KD09, 12NA4** models have 2 fans.
 SEZ-KD18NA4** models have 4 fans.
 4. In case an inlet duct is used, remove the air filter (supply with the unit), then install the filter (field supply) at section side.



Intertek



1340 Satellite Boulevard
Suwanee, GA 30024
Tele: 678-376-2900 • Fax: 800-889-9904
Toll Free: 800-433-4822
www.mehvac.com

FORM# SEZ-KD15NA4** FOR MXZ MULTI-ZONE SYSTEMS - 201311
Specifications are subject to change without notice.
© 2013 Mitsubishi Electric US, Inc.