



REPAIR PARTS

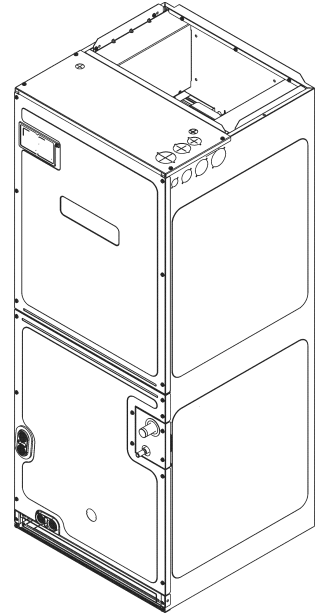
AVPEC EEV Air Handler

AVPEC25B14BA

AVPEC37C14BA

AVPEC59D14BA

AVPEC61D14BA



Amana® is a registered trademark of Maytag Corporation or its related companies and is used under license. All rights reserved.

This manual is to be used by qualified technicians only.

© 2021 Goodman Company, L.P. ♦ 5151 San Felipe St, Suite 500 ♦ Houston, TX 77056

Important Information

Index

Functional Parts List	3
Illustration and Parts	4 - 9

Views shown are for parts illustrations only, not servicing procedures.

Text Codes:

AR - As Required

NA - Not Available

NS - Not Shown

00000000 - See Note

QTY - Quantity Example (QTY 3) (If Quantity not shown, Quantity = 1)

M - Model Example (M1) (If M Code not shown, then part is used on all Models)

Expanded Model Nomenclature:

Example

M1 - Model#1

M2 - Model#2

M3 - Model#3

Goodman Company, L.P. is not responsible for personal injury or property damage resulting from improper service. Review all service information before beginning repairs.

Warranty service must be performed by an authorized technician, using authorized factory parts. If service is required after the warranty expires, Goodman Company, L.P. also recommends contacting an authorized technician and using authorized factory parts.

Goodman Company, L.P. reserves the right to discontinue, or change at any time, specifications or designs without notice or without incurring obligations.

For assistance within the U.S.A. contact:

Homeowner Support

Goodman Company, L.P.

19001 Kermier Road

Waller, Texas 77484

877-254-4729-Telephone

713-863-2382-Facsimile

For assistance outside the U.S.A. contact:

International Division

Goodman Company, L.P.

19001 Kermier Road

Waller, Texas 77484

713-861-2500-Telephone

713-863-2382-Facsimile

Functional Parts

Part

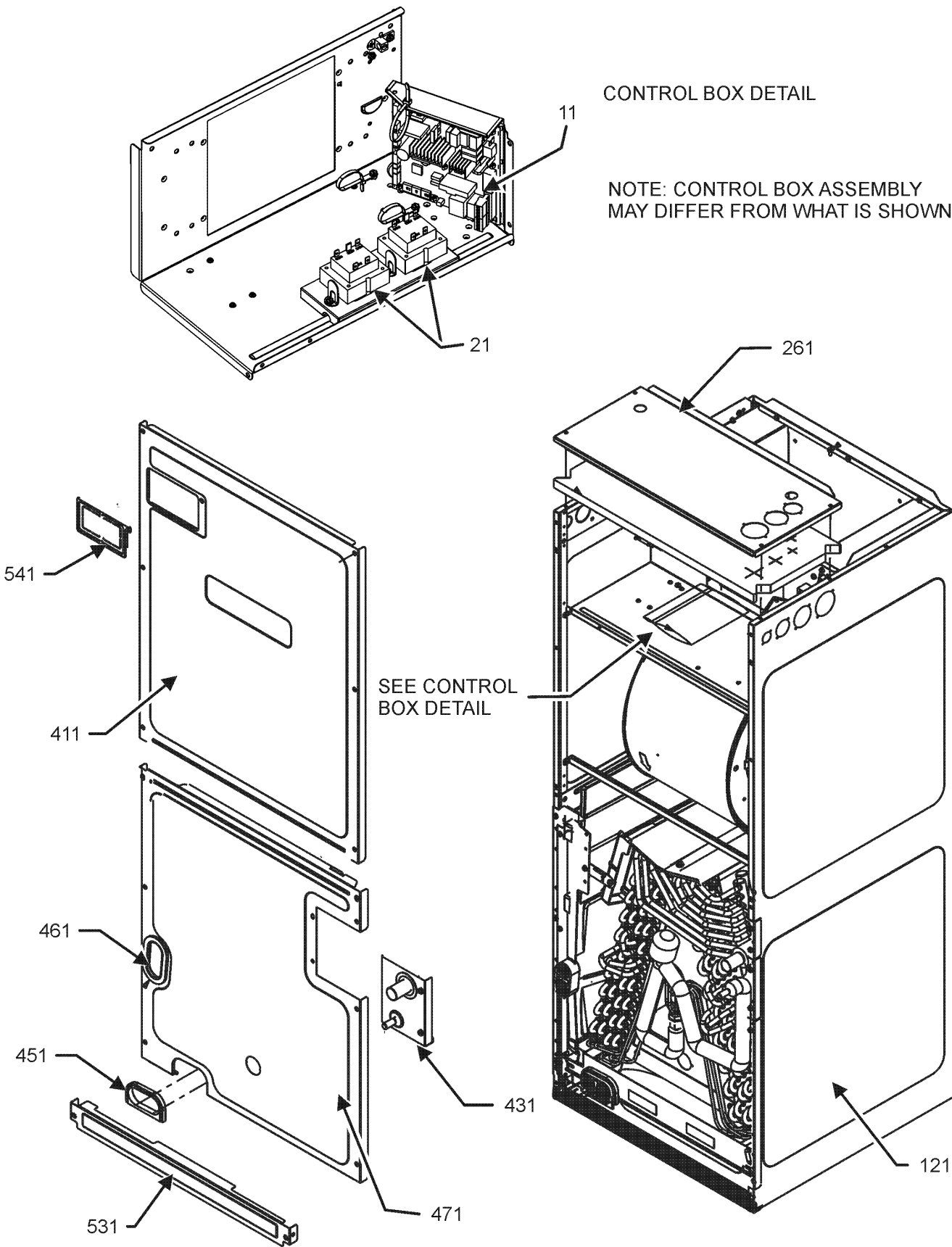
No: **Description:**

SHARED DATA	Available thru CoolCloud HVAC app
3P381420-2	EEV COIL
0131M00272	MOTOR, 1 HP, SERIAL ECM (M3, M4)
0131M00270	MOTOR, 1/2 HP, SERIAL ECM (M1)
0131M00271	MOTOR, 3/4 HP, SERIAL ECM (M2)
PCBJA105	PCB, CONTROL, AIR HANDLER
3S481012-1	PRESSURE SENSOR
3S500031-1	PULSE MOTOR EXPANS EEV
4P389796-1	THERMISTOR ASSY
0130M00330	TRANSFORMER, 208/230, 24V (QTY 2)

Expanded Model Nomenclature

M1 - AVPEC25B14BA
M2 - AVPEC37C14BA
M3 - AVPEC59D14BA
M4 - AVPEC61D14BA

Control Panel and Wrapper Assembly



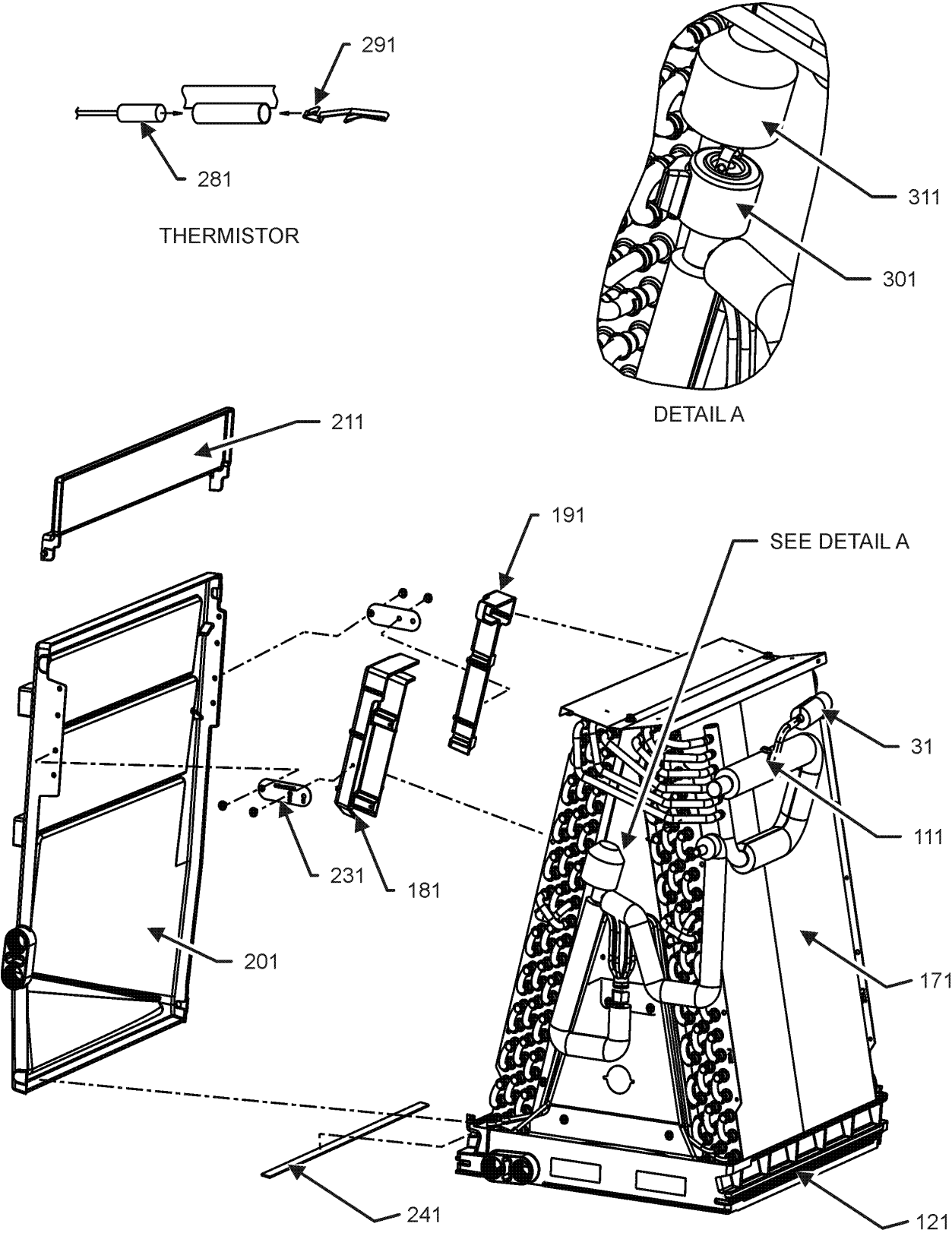
Control Panel and Wrapper Assembly

Ref. Part No: No:	Description:	Ref. Part No: No:	Description:
Image 1:			
11	PCBJA105		PCB, CONTROL, AIR HANDLER
21	0130M00330		TRANSFORMER, 208/230, 24V (QTY 2)
121	0121A00455PDG		WRAPPER (M3)
121	0121A00456PDG		WRAPPER (M2)
121	0121A00458PDG		WRAPPER (M1)
121	0121A00276PDG		WRAPPER, LARGE, PAINTED (M4)
261	0121A00252PDG		Plate, Upper Tie, Ptd (M1)
261	0121A00253PDG		Plate, Upper Tie, Ptd (M2)
261	0121A00254PDG		Plate, Upper Tie, Ptd (M3, M4)
411	0121A01440PDG		PANEL, UPPER ACCESS (M3, M4)
411	0121A01441PDG		PANEL, UPPER ACCESS (M2)
411	0121A01442PDG		PANEL, UPPER ACCESS (M1)
431	0121A00658PDG		REFRIGERATION TUBING PANEL
451	0154A00006BL		GASKET, DRAIN PAN
461	0154A00007BL		GASKET, DRAIN PAN
471	0121A00460PDG		LOWER ACCESS PANEL (M3)
471	0121A00461PDG		LOWER ACCESS PANEL (M2)
471	0121A00463PDG		LOWER ACCESS PANEL (M1)
471	0121A00618PDG		LOWER ACCESS PANEL (M4)
531	0121A00242PDG		Panel, Filter Access, Ptd (M1)
531	0121A00243PDG		Panel, Filter Access, Ptd (M2)
531	0121A00244PDG		Panel, Filter Access, Ptd (M3, M4)
541	0161A00073		CIRCUIT BREAKER COVER
NS	B1392136		2.00" VIEW PORT BUSHING
NS	SHARED DATA		Available thru CoolCloud HVAC app
NS	0164A00002		GROMMET
NS	0163M00036		SCREW,#10X1/2,B,BZ,SLOT,SR,BLK (QTY 4)
NS	0163A00026		THUMB SCREW (QTY 2)
NS	BT1392909		WASHER; SS RETAINING (QTY 2)
NS	0259A00021		WIRE ASSY, 9 PIN FEMALE CONN
NS	0259A00033P		WIRE ASSY, 9 PIN FEMALE CONN
NS	0259A00031P		WIRE HARNESS, CONNECTOR

Expanded Model Nomenclature

M1 - AVPEC25B14BA M2 - AVPEC37C14BA M3 - AVPEC59D14BA M4 - AVPEC61D14BA

Coil Assembly



NOTE: COIL ASSEMBLY MAY DIFFER FROM WHAT IS SHOWN

Coil Assembly

Ref. Part No: No:	Description:	Ref. Part No: No:	Description:
Image 1:			
31	3S481012-1		PRESSURE SENSOR
111	0151M00104		VALVE CORE
121	0161A00049		DRAINPAN, VERTICAL (M1)
121	0161A00051		DRAINPAN, VERTICAL (M3, M4)
121	0161A00052		DRAINPAN, VERTICAL (M2)
171	0270A01026		COIL TUBING ASSY (M1)
171	0270A01027		COIL TUBING ASSY (M2)
171	0270A01028		COIL TUBING ASSY (M3)
171	0270A01029		COIL TUBING ASSY (M4)
181	0161A00060		CONDENSATE, COLLECT, FRONT
191	0161A00061		CONDENSATE, COLLECT, BACK
201	0161A00053		DRAIN PAN HORIZONTAL, TALL
211	0161A00054		DRAIN PAN, EXTENSION, SMALL (M1, M2, M3)
211	0161A00056		DRAIN PAN, EXTENSION, TALL (M4)
231	0121A00633		BRACKET, DRIP SHIELD (M1, M2)
231	0121A00634		BRACKET, DRIP SHIELD (M3, M4)
241	0154A00016		GASKET, PORON
281	4P389796-1		THERMISTOR ASSY
291	4PA38890-1		MOUNTING SPRING, THERMISTOR (QTY 2)
301	3P381420-2		EEV COIL
311	4P399446-1		WATERPROOF CAP
NS	0163M00175		CAP WITH O-RING
NS	0154A00006BL		Gasket, Drain Pan
NS	0154A00007BL		Gasket, Drain Pan
NS	3S500031-1		MOTOR OPERATED VALVE BODY
NS	0259A00023		WIRE HARNESS ASSY
NS	0259A00024		WIRE HARNESS ASSY
NS	0259A00025		WIRE HARNESS ASSY

Expanded Model Nomenclature

M1 - AVPEC25B14BA M2 - AVPEC37C14BA M3 - AVPEC59D14BA M4 - AVPEC61D14BA

Blower Assembly

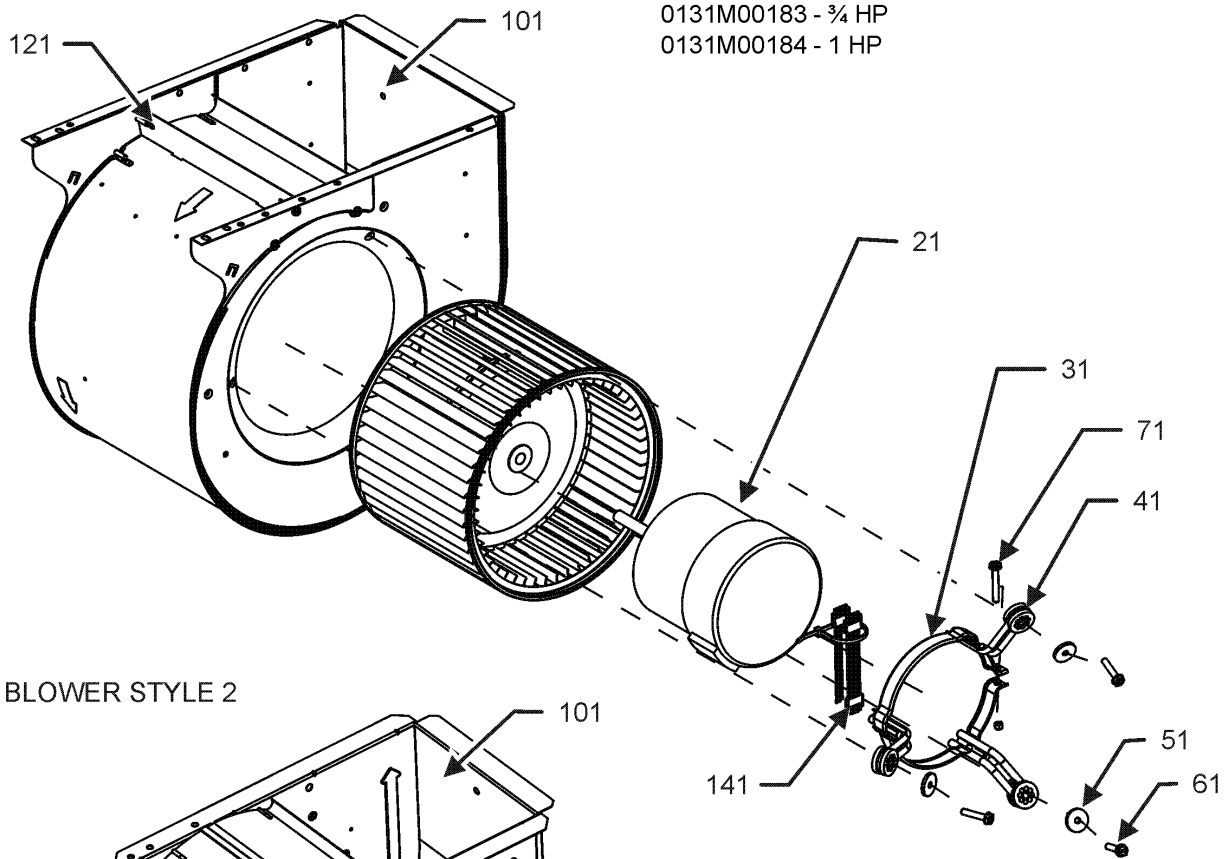
BLOWER STYLE 1

*If end bells are needed please order the following:

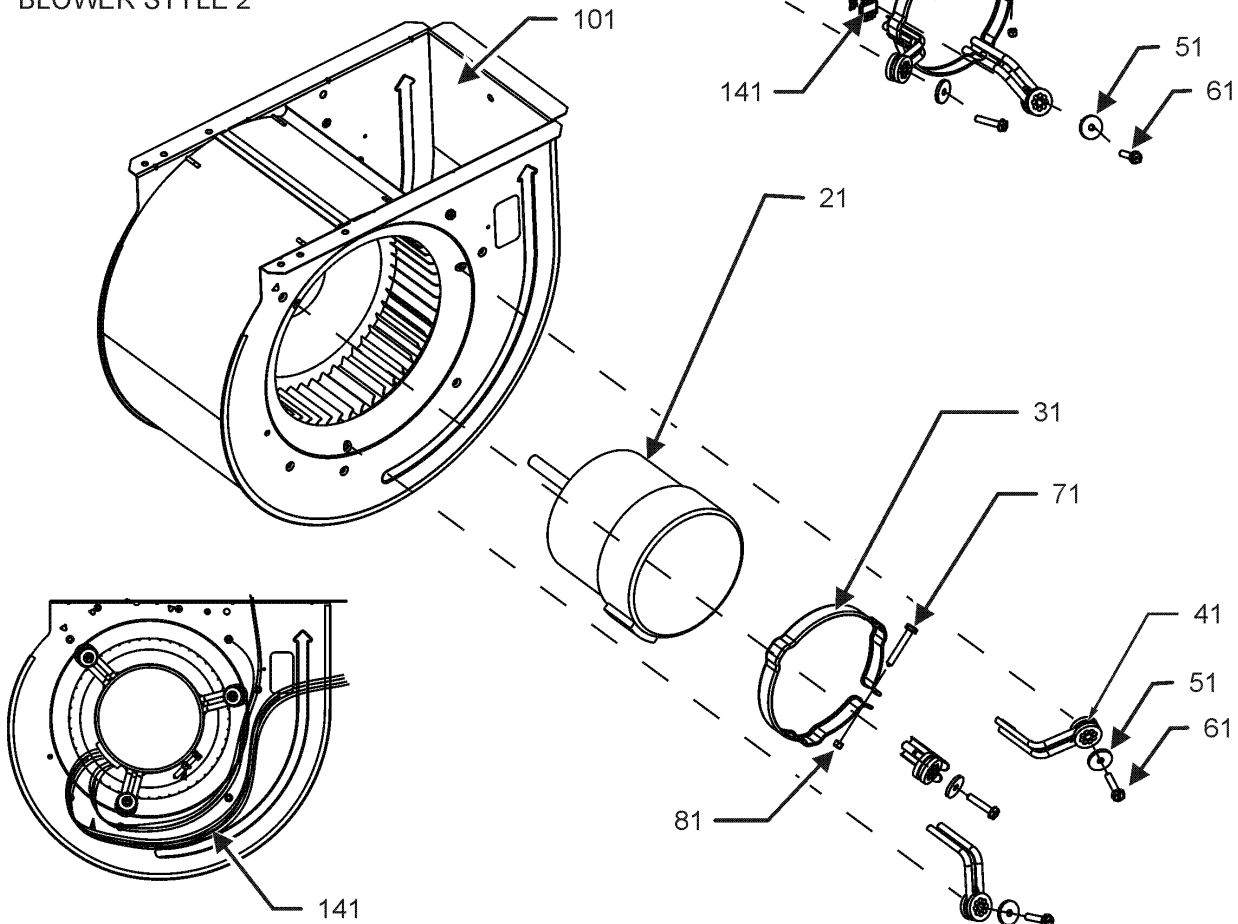
0131M00182 - ½ HP

0131M00183 - ¾ HP

0131M00184 - 1 HP



BLOWER STYLE 2



Blower Assembly

Ref. Part No: No:	Description:	Ref. Part No: No:	Description:
Image 1:			
21	0131M00272		MOTOR, 1 HP, SERIAL ECM (M3, M4)
21	0131M00270		MOTOR, 1/2 HP, SERIAL ECM (M1)
21	0131M00271		MOTOR, 3/4 HP, SERIAL ECM (M2)
31	0121M00038		MOUNT BAND, MOTOR (M1)
31	0121M00039		MOUNT BAND, MOTOR (HEAVY DUTY) (M2, M3, M4)
41	0163M00538		MOUNT ARM, MOTOR (M2, M3, M4)
41	0171M00012		MOUNT MOUNT ARM (M1)
51	B1392918		WASHER, FLAT 1/4 ID X 1 OD (QTY 3)
61	M0250565		TC SCREW 1.25" (QTY 3)
71	0163M00320		HEX HED ALL THREAD TAP BOLT
81	B1393800		LOCKNUT, NYLON, INSERT 1/4,20
101	0271A00016		BLOWER HOUSING ASSY 10 X 10 (M2)
101	0271A00203		BLOWER SHELL ASSEMBLY (M1)
101	0271A00206		BLOWER SHELL ASSY (M3, M4)
121	764741		BLOWER BLOCK-OFF 10 X 10 (M2)
131	0150M00059		WHEEL, BLOWER (M2)
141	0259M00008		WIRE HARNESS
NS	0163M00003P		SCREW,#10 X 1/2,A,SLOT,SR,BLK

Expanded Model Nomenclature

M1 - AVPEC25B14BA M2 - AVPEC37C14BA M3 - AVPEC59D14BA M4 - AVPEC61D14BA
