

OUTDOOR UNIT

Revision G:

• MXZ-2C20/3C24/3C30/4C36/5C42NA3 - ☐ U1 and
MXZ-2C20/3C24/3C30NAHZ3 - ☐ U1 have been
added.

OBB702 REVISED EDITION-F is void.

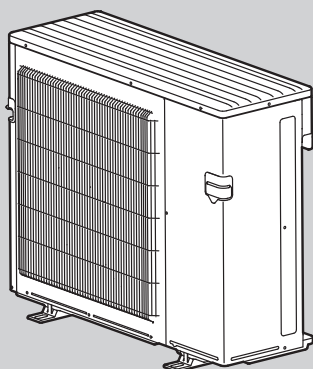
PARTS CATALOG



No. OBB702
REVISED EDITION-G

Models

MXZ-2C20NA2 - <input type="checkbox"/> U1, <input type="checkbox"/> U4	MXZ-2C20NAHZ
MXZ-2C20NA3 - <input type="checkbox"/> U1	MXZ-2C20NAHZ2 - <input type="checkbox"/> U1
MXZ-3C24NA	MXZ-2C20NAHZ3 - <input type="checkbox"/> U1
MXZ-3C24NA2 - <input type="checkbox"/> U1	MXZ-3C24NAHZ
MXZ-3C24NA3 - <input type="checkbox"/> U1	MXZ-3C24NAHZ2 - <input type="checkbox"/> U1
MXZ-3C30NA	MXZ-3C24NAHZ3 - <input type="checkbox"/> U1
MXZ-3C30NA2 - <input type="checkbox"/> U1	MXZ-3C30NAHZ
MXZ-3C30NA3 - <input type="checkbox"/> U1	MXZ-3C30NAHZ2 - <input type="checkbox"/> U1
MXZ-4C36NA	MXZ-3C30NAHZ3 - <input type="checkbox"/> U1
MXZ-4C36NA2 - <input type="checkbox"/> U1	
MXZ-4C36NA3 - <input type="checkbox"/> U1	
MXZ-5C42NA	
MXZ-5C42NA2 - <input type="checkbox"/> U1	
MXZ-5C42NA3 - <input type="checkbox"/> U1	


CONTENTS

1. SERVICE PARTS LIST	2
2. OPTIONAL PARTS	38

SERVICE MANUAL (OBH702)

MXZ-3C24NA MXZ-3C24NA2 MXZ-3C24NA3
MXZ-3C30NA MXZ-3C30NA2 MXZ-3C30NA3
MXZ-4C36NA MXZ-4C36NA2 MXZ-4C36NA3

Revision A:

• MXZ-3C24NA, MXZ-3C30NA and MXZ-4C36NA have been added.

Revision B:

• The part number of the ice guard for MXZ-5C42NA has been corrected.

Revision C:

• MXZ-3C24/3C30/4C36/5C42NA2 - [U1] and MXZ-2C20/3C24/3C30NAHZ2 - [U1] have been added.

Revision D:

• MXZ-2C20NA2 - [U1] has been added.

Revision E:

• Some descriptions have been modified.

Revision F:

• MXZ-2C20NA2 - [U4] has been added.
• Some descriptions have been modified.

Revision G:

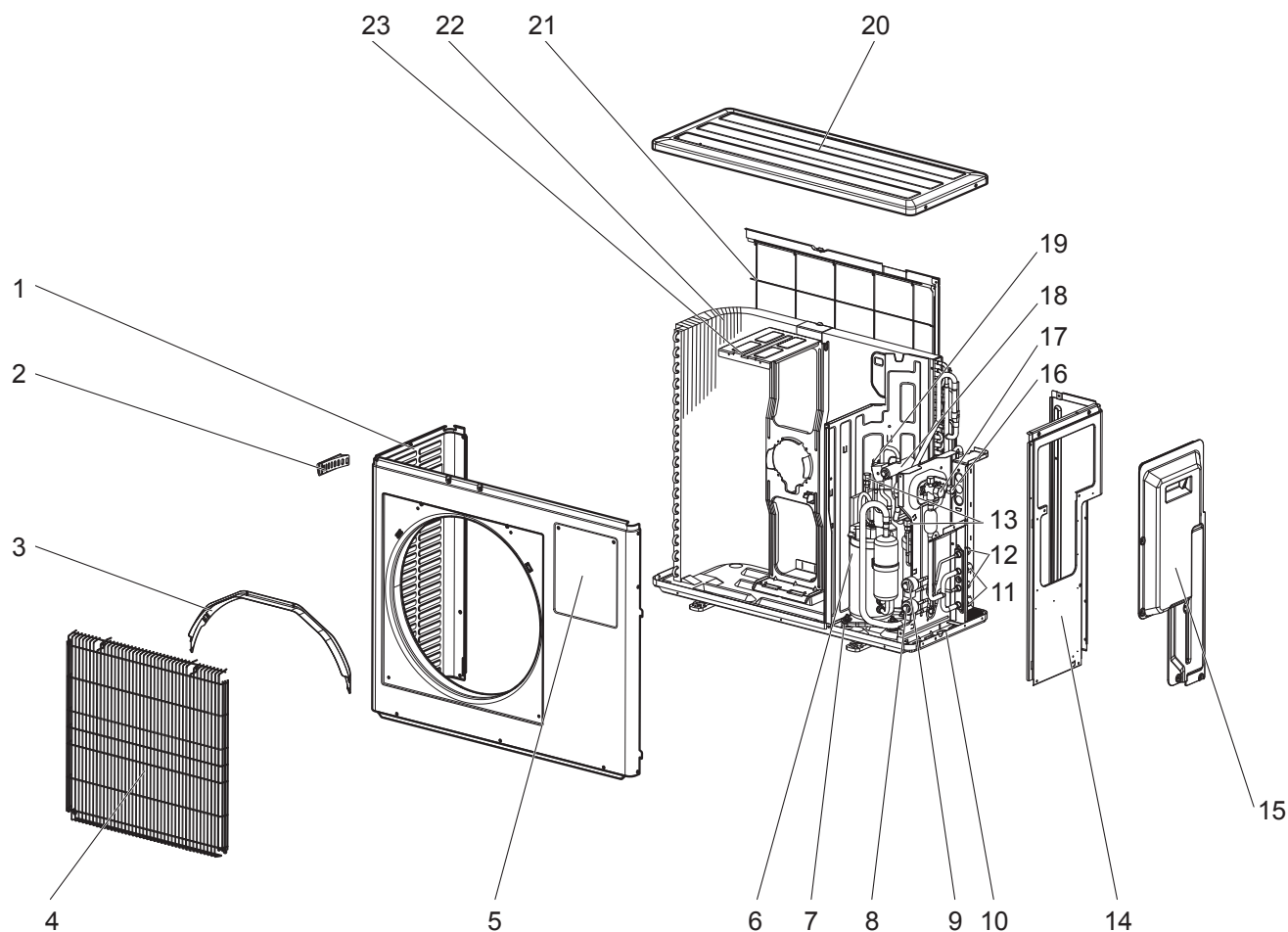
• MXZ-2C20/3C24/3C30/4C36/5C42NA3 - [U1] and MXZ-2C20/3C24/3C30NAHZ3 - [U1] have been added.

1

SERVICE PARTS LIST

MXZ-2C20NA2 MXZ-2C20NA3

1-1. OUTDOOR UNIT STRUCTURAL PARTS AND FUNCTIONAL PARTS



1-1. OUTDOOR UNIT STRUCTURAL PARTS AND FUNCTIONAL PARTS

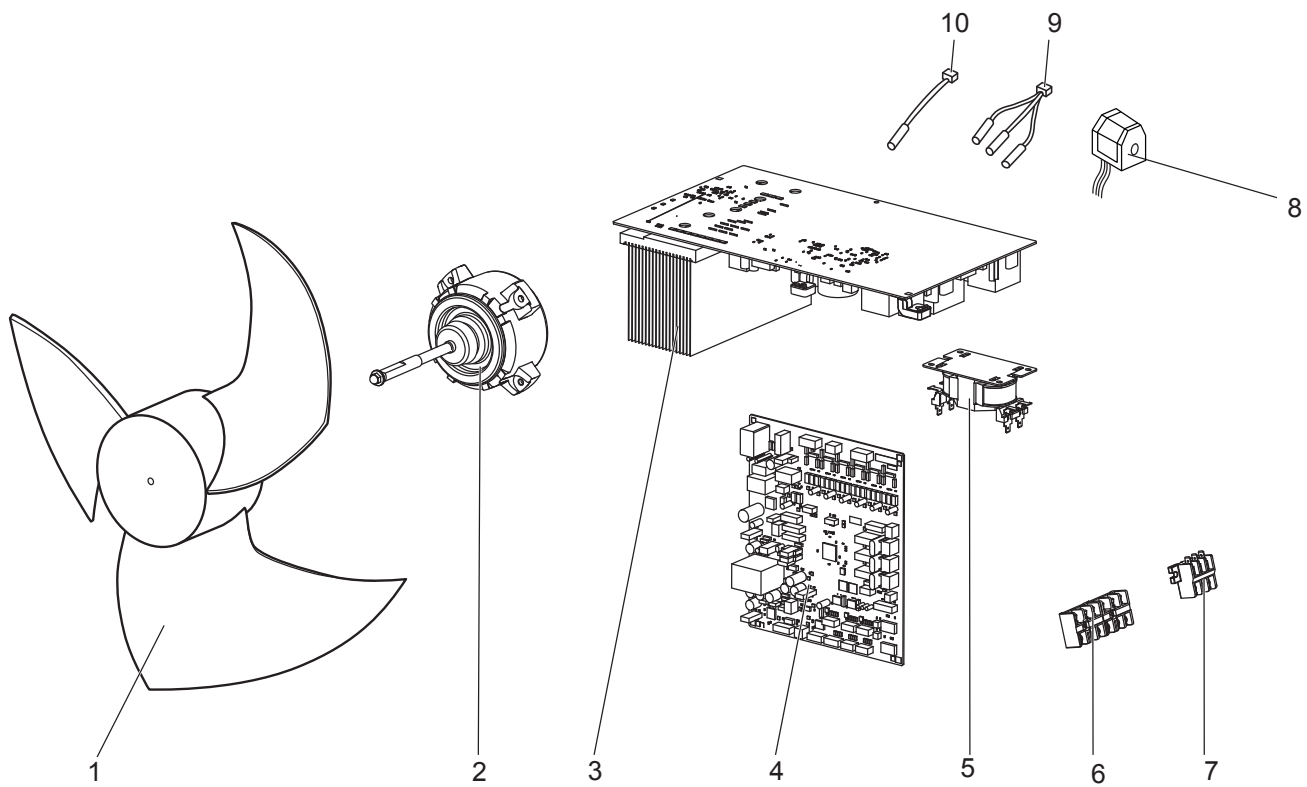
1. The part quantity below indicates the required number of pieces per unit.

2. The circled No. indicates that the part is not shown in the figure.

No.	Parts No.	Parts Name	MXZ-2C20NA2 - U1	MXZ-2C20NA2 - U4	MXZ-2C20NA3 - U1	Symbol in Wiring Diagram	Remarks
1	E22 T07 232	CABINET	1	1			
1	E22 06T 232	CABINET			1		
2	E22 817 009	HANDLE	1	1	1		
3	E22 J69 531	ICE GUARD	1	1	1		
4	E22 J69 521	GRILLE	1	1	1		
5	E22 T07 246	SUB PANEL	1	1	1		
6	E22 01B 900	COMPRESSOR	1	1	1	MC	SNB140FQUH2T
7	E22 C34 506	COMPRESSOR RUBBER SET	3	3	3		3 RUBBERS SET
8	E22 851 640	EXPANSION VALVE	1	1	1		A room
8	E22 R51 493	EXPANSION VALVE COIL	1	1	1	LEV A	A room, Connector: WHITE
9	E22 851 640	EXPANSION VALVE	1	1	1		B room
9	E22 R52 493	EXPANSION VALVE COIL	1	1	1	LEV B	B room, Connector: RED
10	E22 T07 290	BASE	1	1	1		
11	E22 D36 666	UNION(GAS)(ø9.52)	2	2	2		ø3/8
12	E22 D36 667	UNION(LIQUID)(ø6.35)	2	2	2		ø1/4
13	E22 E79 641	SERVICE PORT	2	2	2		
14	E22 R51 233	BACK PANEL	1	1	1		
15	E22 R51 245	SERVICE PANEL	1	1	1		
16	E22 D36 662	STOP VALVE (LIQUID) (ø9.52)	1	1	1		ø3/8
17	E22 C88 661	STOP VALVE (GAS) (ø15.88)	1	1	1		ø5/8
18	E22 A56 961	4-WAY VALVE	1	1	1		
19	E22 W66 646	HIGH PRESSURE SWITCH	1	1	1	HPS	4.41 MPa (45.0 kg/cm ²)
20	E22 819 297	TOP PANEL	1	1			
20	E22 06T 297	TOP PANEL			1		
21	E22 J69 523	REAR GUARD	1	1	1		
22	E22 01B 630	OUTDOOR HEAT EXCHANGER	1	1	1		
23	E22 J69 515	MOTOR SUPPORT	1	1	1		
②④	E22 938 937	CAPILLARY TUBE (ø3.6 × ø2.4 × 500)	8	8			O.D.0.14 x I.D.0.09 x 19.68
②⑤	E22 939 936	CAPILLARY TUBE (ø4.0 × ø2.8 × 100)	2	2	2		O.D.0.16 x I.D.0.11 x 3.94
②⑥	E22 C18 959	POWER RECEIVER	1	1	1		
②⑦	E22 853 640	EXPANSION VALVE	1	1	1		R
②⑦	E22 T07 493	EXPANSION VALVE COIL	1	1	1	LEV R	Connector: BLUE

MXZ-2C20NA2 MXZ-2C20NA3

1-2. OUTDOOR UNIT FUNCTIONAL PARTS AND ELECTRICAL PARTS



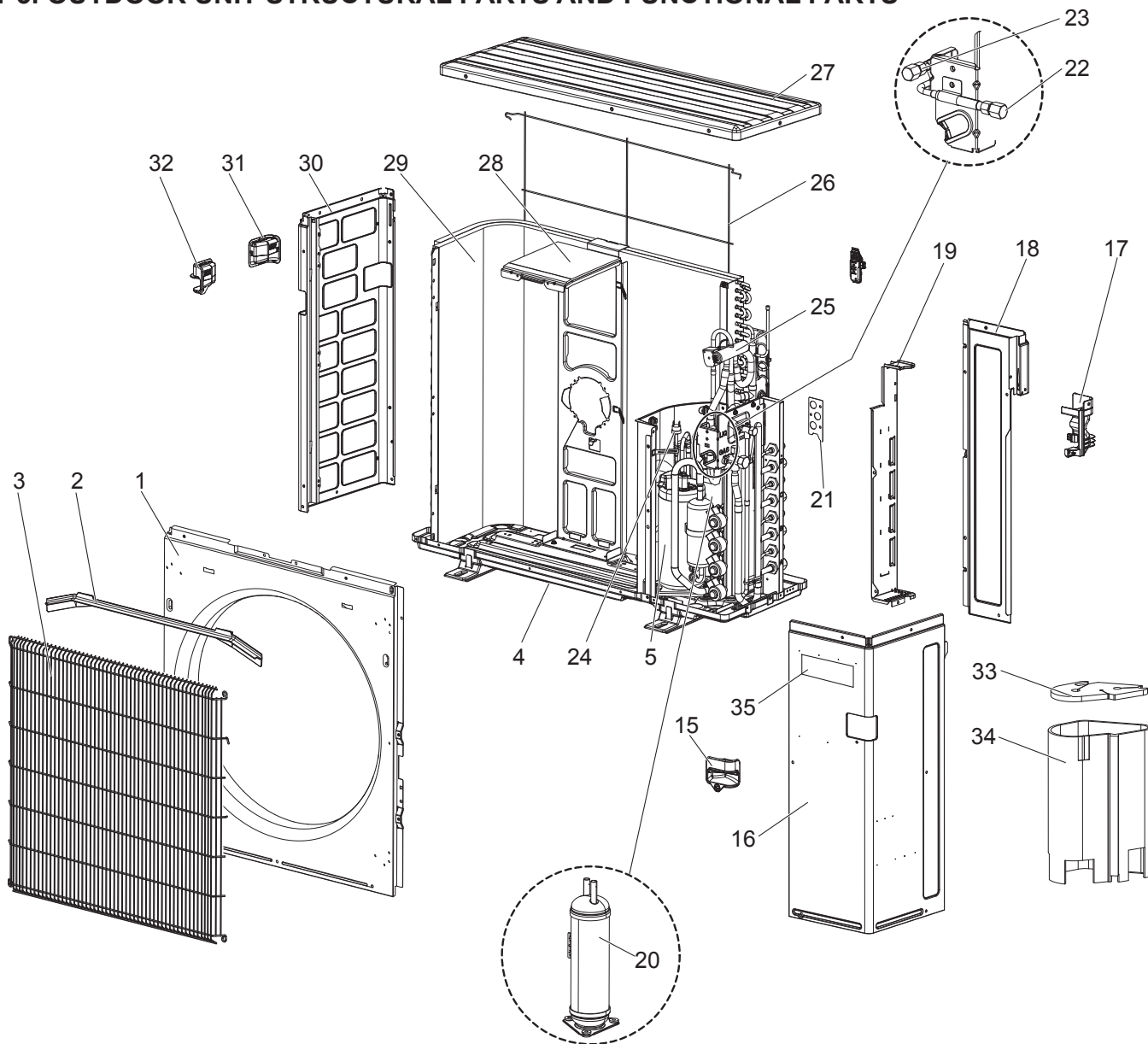
1-2. OUTDOOR UNIT FUNCTIONAL PARTS AND ELECTRICAL PARTS

1. The part quantity below indicates the required number of pieces per unit.

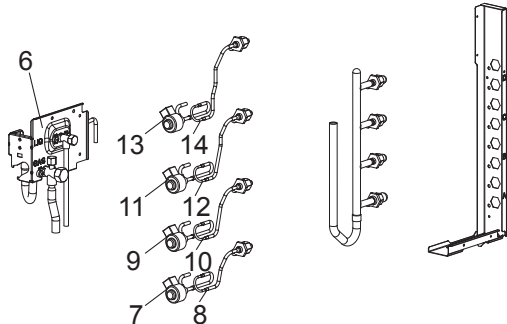
No.	Parts No.	Parts Name	MXZ-2C20NA2 - ^[U1]	MXZ-2C20NA2 - ^[U4]	MXZ-2C20NA3 - ^[U1]	Symbol in Wiring Diagram	Remarks
1	E22 851 501	PROPELLER FAN	1	1	1		
2	E22 01B 301	OUTDOOR FAN MOTOR	1			MF	SIC-82FX-F764-□
2	E22 96R 301	OUTDOOR FAN MOTOR		1	1	MF	SIC-71FW-F764-□
3	E22 01B 440	POWER BOARD	1	1			Includes heat sink and RT64
3	E22 06T 440	POWER BOARD			1		Includes heat sink and RT64
4	E22 10J 450	OUTDOOR CONTROL P.C. BOARD	1				
4	E22 96R 450	OUTDOOR CONTROL P.C. BOARD		1			
4	E22 06T 450	OUTDOOR CONTROL P.C. BOARD			1		
5	E22 R51 337	REACTOR	1	1	1	L	
6	E22 C92 375	TERMINAL BLOCK	2	2	2	TB2~3	Indoor unit connecting
7	E22 01B 374	TERMINAL BLOCK	1	1	1	TB1	
8	E22 01B 490	R.V. COIL	1	1	1	21S4	
9	E22 T07 308	THERMISTOR SET	1	1		RT61, RT62, RT68	DEFROST, DISCHARGE OUTDOOR HEAT EXCHANGER
9	E22 01L 308	THERMISTOR SET			1	RT61, RT62, RT68	DEFROST, DISCHARGE OUTDOOR HEAT EXCHANGER
10	E22 T07 309	AMBIENT TEMPERATURE THERMISTOR	1	1	1	RT65	

MXZ-3C24NA MXZ-3C30NA MXZ-4C36NA
MXZ-3C24NA2 MXZ-3C30NA2 MXZ-4C36NA2

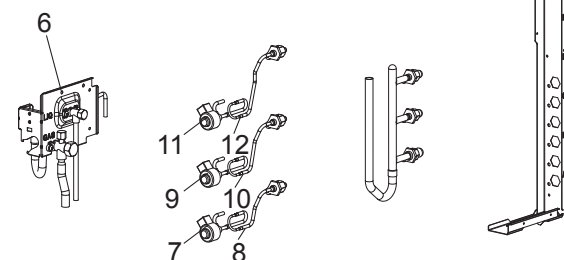
1-3. OUTDOOR UNIT STRUCTURAL PARTS AND FUNCTIONAL PARTS



MXZ-4C36NA MXZ-4C36NA2



MXZ-3C24NA MXZ-3C30NA
MXZ-3C24NA2 MXZ-3C30NA2



1-3. OUTDOOR UNIT STRUCTURAL PARTS AND FUNCTIONAL PARTS

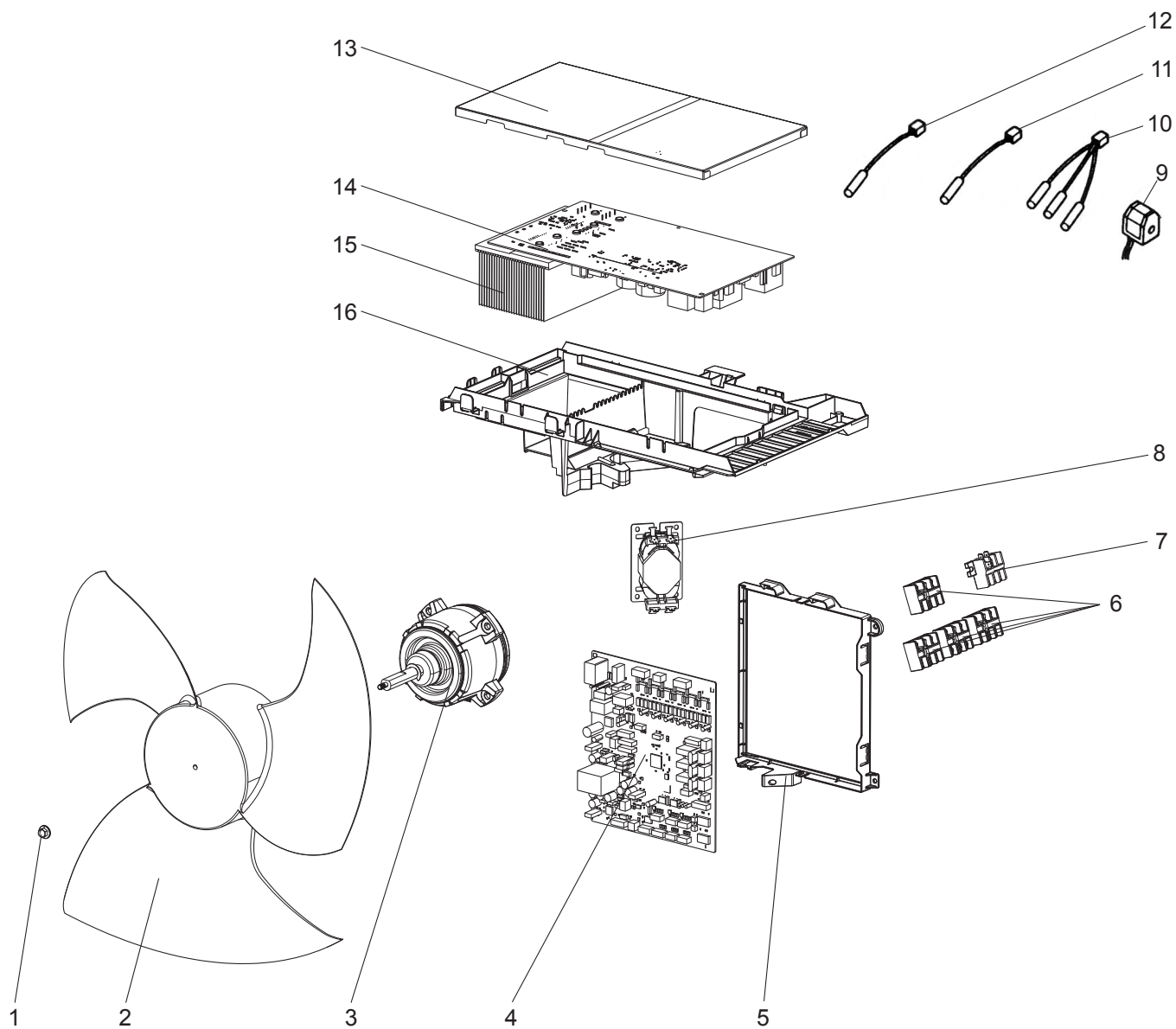
1. The part quantity below indicates the required number of pieces per unit.

2. The circled No. indicates that the part is not shown in the figure.

No.	Part No.	Part Name	MXZ-3C24NA	MXZ-3C24NA2 - [UT]	MXZ-3C30NA	MXZ-3C30NA2 - [UT]	MXZ-4C36NA	MXZ-4C36NA2 - [UT]	Symbol in Wiring Diagram	Remarks
1	T7W E21 668	FRONT PANEL	1		1		1			
1	T7W E22 668	FRONT PANEL		1		1		1		
2	R01 E02 631	ICE GUARD	1	1	1	1	1	1		
3	R01 E73 691	WIRE GRILLE	1	1	1	1	1	1		
4	T7W E24 686	BASE ASSEMBLY	1		1		1			
4	T7W E25 686	BASE ASSEMBLY		1		1		1		
5	T97 419 607	COMPRESSOR	1	1	1	1	1	1	MC	SNB220FQGMC Includes rubber mounts
6	T7W E06 410	STOP VALVE ASSY	1	1	1	1	1	1		Includes both valves
7	T7W E78 242	LEV COIL	1	1	1	1	1	1	LEV A	A room, Connector: WHITE
8	T7W E56 401	EXPANSION VALVE ASSY	1	1	1	1	1	1	LEV A	A room, Includes union and capillary tube
9	T7W E79 242	LEV COIL	1	1	1	1	1	1	LEV B	B room, Connector: RED
10	T7W E57 401	EXPANSION VALVE ASSY	1	1	1	1	1	1	LEV B	B room, Includes union and capillary tube
11	T7W E80 242	LEV COIL	1	1	1	1	1	1	LEV C	C room Connector: BLUE
12	T7W E58 401	EXPANSION VALVE ASSY	1	1	1	1	1	1	LEV C	C room, Includes union and capillary tube
13	T7W E81 242	LEV COIL					1	1	LEV D	D room, Connector: YELLOW
14	T7W E59 401	EXPANSION VALVE ASSY					1	1	LEV D	D room, Includes union and capillary tube
15	T7W A02 655	HANDLE (R FRONT)	1	1	1	1	1	1		
16	T7W E23 667	SERVICE PANEL	1	1	1	1	1	1		
17	T7W A03 655	HANDLE (R REAR)	1	1	1	1	1	1		
18	T7W E11 682	REAR PANEL	1	1	1	1	1	1		
19	T7W E38 661	BACK PILLAR	1	1	1	1	1	1		
20	T7W E26 440	ACCUMULATOR	1		1		1			
20	T7W E27 440	ACCUMULATOR		1		1		1		
21	T7W E07 617	CONDUIT PLATE SET	1	1	1	1	1	1		
22	R01 E13 413	SERVICE PORT	1	1	1	1	1	1		
23	R01 E12 413	SERVICE PORT	1	1	1	1	1	1		
24	T7W E11 208	HIGH PRESSURE SWITCH	1		1		1		HPS	4.8 MPa (48.9 kg/cm ²)
24	T7W E13 208	HIGH PRESSURE SWITCH		1		1		1	HPS	4.41 MPa (45.0 kg/cm ²)
25	T7W E06 403	4-WAY VALVE	1	1	1	1	1	1		
26	T7W E06 698	REAR GUARD	1	1	1	1	1	1		
27	T7W E14 641	TOP PANEL	1	1	1	1	1	1		
28	T7W E17 130	MOTOR SUPPORT	1	1	1	1	1	1		
29	T7W E75 408	OUTDOOR HEAT EXCHANGER	1	1	1	1	1	1		Includes capillary tubes and distributor
30	T7W E11 662	SIDE PANEL (L)	1	1	1	1	1	1		
31	T7W A01 655	HANDLE (REAR)	1	1	1	1	1	1		
32	T7W A00 655	HANDLE (FRONT)	1	1	1	1	1	1		
33	T7W A01 602	COMPRESSOR FELT (TOP)	1	1	1	1	1	1		
34	T7W A00 602	COMPRESSOR FELT (BODY)	1	1	1	1	1	1		
35	T7W A01 005	BRAND LABEL	1	1	1	1	1	1		
③⑥	T7W A00 508	DAMPER SET	1	1	1	1	1	1		2 PCS SET 95 x 250 T2 (mm)

MXZ-3C24NA MXZ-3C30NA MXZ-4C36NA
MXZ-3C24NA2 MXZ-3C30NA2 MXZ-4C36NA2

1-4. OUTDOOR UNIT FUNCTIONAL PARTS AND ELECTRICAL PARTS



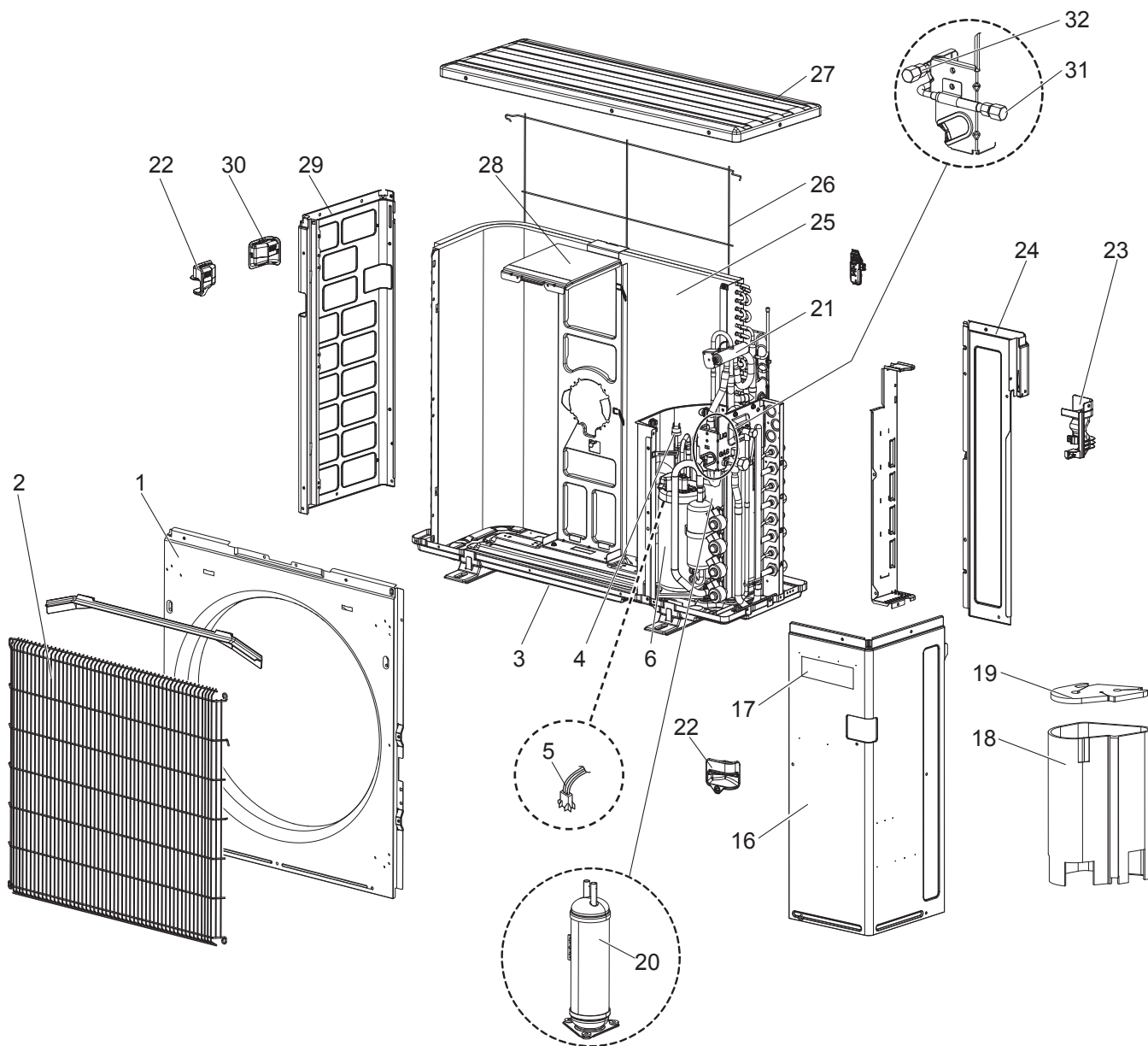
1-4. OUTDOOR UNIT FUNCTIONAL PARTS AND ELECTRICAL PARTS

1. The part quantity below indicates the required number of pieces per unit.

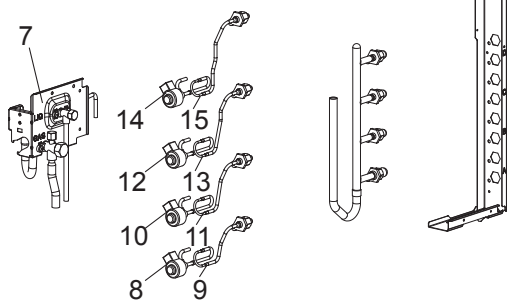
2. The circled No. indicates that the part is not shown in the figure.

No.	Part No.	Part Name	MXZ-3C24NA	MXZ-3C24NA2 - [U1]	MXZ-3C30NA	MXZ-3C30NA2 - [U1]	MXZ-4C36NA	MXZ-4C36NA2 - [U1]	Symbol in Wiring Diagram	Remarks
1	R01 E09 097	PROPELLER FAN NUT	1	1	1	1	1	1		
2	T7W A00 115	PROPELLER FAN	1	1	1	1	1	1		
3	T7W A13 221	OUTDOOR FAN MOTOR	1	1	1	1	1	1	MF	
4	T7W GB1 315	OUTDOOR CONTROL P.C. BOARD	1							
4	T7W GY0 315	OUTDOOR CONTROL P.C. BOARD		1						
4	T7W GC0 315	OUTDOOR CONTROL P.C. BOARD			1					
4	T7W GZ0 315	OUTDOOR CONTROL P.C. BOARD				1				
4	T7W GD1 315	OUTDOOR CONTROL P.C. BOARD					1			
4	T7W H00 315	OUTDOOR CONTROL P.C. BOARD						1		
5	T7W A02 327	CB HOLDER	1	1	1	1	1	1		
6	T7W E13 716	TERMINAL BLOCK	3	3	3	3	4	4	TB2,3,4,(5)	Indoor unit connecting 3P (S1,S2,S3)
7	T7W E63 716	TERMINAL BLOCK	1	1	1	1	1	1	TB1	Power supply 3P (L1,L2,GR)
8	T7W E25 259	REACTOR	1	1	1	1	1	1	L	
9	T7W E83 242	R.V. COIL	1	1	1	1	1	1	21S4	
10	T7W E71 202	THERMISTOR	1	1	1	1	1	1	RT61,62,68	DEFROST, DISCHARGE, OUTDOOR HEAT EXCHANGER
11	T7W E72 202	THERMISTOR	1	1	1	1	1	1	RT65	AMBIENT
12	R01 E99 202	THERMISTOR	1	1	1	1	1	1	RT64	FIN (HEAT SINK)
13	T7W A00 325	PB COVER	1	1	1	1	1	1		
14	T7W AE0 323	OUTDOOR POWER P.C. BOARD	1		1		1			
14	T7W AW0 323	OUTDOOR POWER P.C. BOARD		1		1		1		
15	T7W A03 371	HEAT SINK	1	1	1	1	1	1		
16	T7W A00 327	PB HOLDER	1	1	1	1	1	1		
(17)	T7W A00 510	COMPRESSOR LEAD ASSY SET	1	1	1	1	1	1		

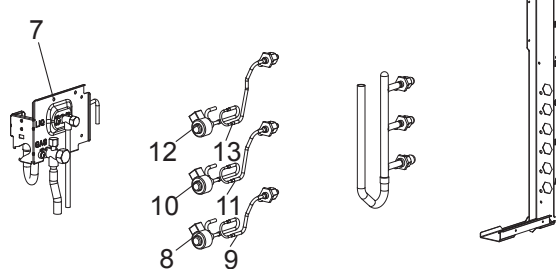
MXZ-3C24NA3 MXZ-3C30NA3 MXZ-4C36NA3
1-5. STRUCTURAL PARTS AND FUNCTIONAL PARTS



MXZ-4C36NA3



MXZ-3C24NA3 MXZ-3C30NA3



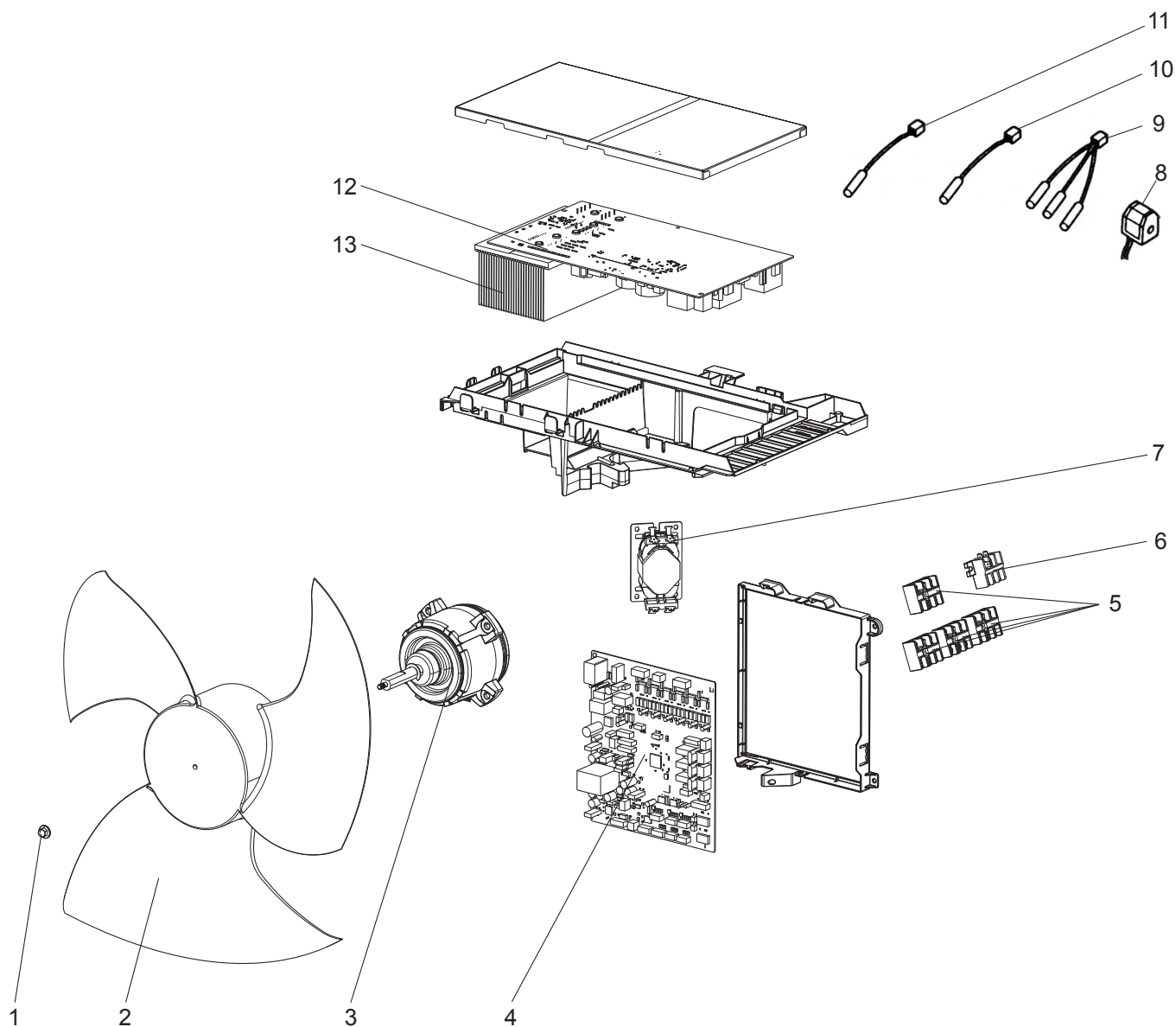
1-5. STRUCTURAL PARTS AND FUNCTIONAL PARTS

1. The part quantity below indicates the required number of pieces per unit.

2. The circled No. indicates that the part is not shown in the figure.

No.	Part No.	Part Name	MXZ-3C24NA3 - ^{U1}	MXZ-3C30NA3 - ^{U1}	MXZ-4C36NA3 - ^{U1}	Symbol in Wiring Diagram	Remarks
1	R01 E29 668	FRONT PANEL	1	1	1		
2	R01 E73 691	WIRE GRILLE	1	1	1		
3	T7W E25 686	BASE ASSY	1	1	1		
4	R01 E15 208	H.P.SWITCH UL4.14MPA	1	1	1	HPS	
5	T7W C02 510	LEAD ASSY COMP	1	1	1		
6	T97 419 607	COMPRESSOR	1	1	1	MC	SNB220FQGMC Includes RUBBER MOUNTS
7	T7W E06 410	STOP VALVE ASSY	1	1	1		
8	T7W E73 242	COIL(LEV)/XAP-5P WH	1	1	1	LEV A	A room
9	T7W E56 401	LEV-UNION ASSY-A	1	1	1	LEV A	A room
10	R01 H38 242	COIL(LEV)/XAP-5P RED	1	1	1	LEV B	B room
11	T7W E57 401	LEV-UNION ASSY-B	1	1	1	LEV B	B room
12	T7W E80 242	COIL(LEV)/XAP-5P BLU	1	1	1	LEV C	C room
13	T7W E58 401	LEV-UNION ASSY-C	1	1	1	LEV C	C room
14	T7W E81 242	COIL(LEV)/XAP-5P YEL			1	LEV D	D room
15	T7W E59 401	LEV-UNION ASSY-D			1	LEV D	D room
16	T7W E29 667	SERVICE PANEL	1	1	1		
17	T7W A01 005	BRAND LABEL	1	1	1		
18	T7W B06 602	COMP FELT-SVB22/BODY	1	1	1		
19	T7W T16 602	COMP FELT-T/SNB	1	1	1		
20	T7W E27 440	ACCUMULATOR	1	1	1		
21	R01 E45 403	4WAY VALVE	1	1	1	21S4	
22	R01 E07 655	HANDLE(FRONT)	2	2	2		
23	T7W A03 655	HANDLE(R_REAR)	1	1	1		
24	R01 E24 682	REAR PANEL	1	1	1		
25	T7W F07 408	HEAT EXCHANGER	1	1	1		
26	T7W E06 698	REAR GUARD	1	1	1		
27	T7W E14 641	TOP PANEL	1	1	1		
28	R01 S00 130	MOTOR SUPPORT	1	1	1		
29	T7W E11 662	SIDE PANEL(L)	1	1	1		
30	R01 E08 655	HANDLE(L_REAR)	1	1	1		
31	R01 E13 413	CHARGE PLUG/ST	1	1	1		
32	R01 E12 413	CHARGE PLUG/LB90	1	1	1		
③3	T7W A00 508	DAMPER SET	1	1	1		2PCS

MXZ-3C24NA3 MXZ-3C30NA3 MXZ-4C36NA3
1-6. FUNCTIONAL PARTS AND ELECTRICAL PARTS



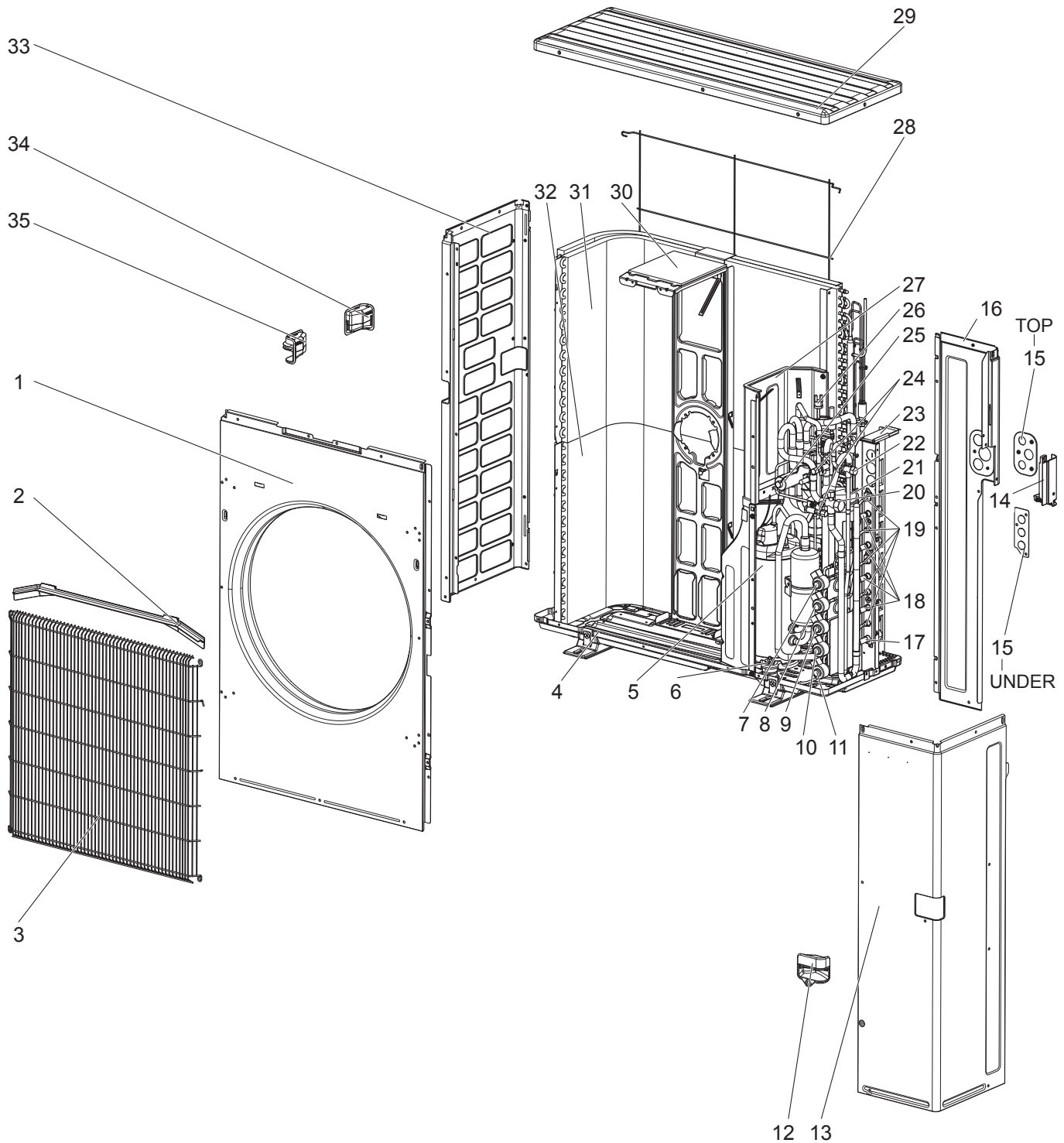
1-6. FUNCTIONAL PARTS AND ELECTRICAL PARTS

1. The part quantity below indicates the required number of pieces per unit.

No.	Part No.	Part Name	MXZ-3C24NA3 - U1	MXZ-3C30NA3 - U1	MXZ-4C36NA3 - U1	Symbol in Wiring Diagram	Remarks
1	R01 E09 097	NUT M6	1	1	1		
2	T7W A00 115	PROPELLER FAN	1	1	1		
3	T7W A13 221	FAN MOTOR	1	1	1	MF	
4	T7W M18 315	CONTROLLER BOARD	1				
4	T7W M19 315	CONTROLLER BOARD		1			
4	T7W M20 315	CONTROLLER BOARD			1		
5	T7W E13 716	T.B./S1.S2.S3	3	3	4	TB2-5	INDOOR UNIT CONNECTING
6	T7W E63 716	T.B./L1.L2.GR	1	1	1	TB1	POWER SUPPLY
7	T7W E25 259	REACTOR	1	1	1	L	
8	T7W E83 242	SOLENOID COIL(21S4)	1	1	1	21S4	Includes SCREW
9	R01 M32 202	THERMISTOR DDH	1	1	1	RT61,62,68	"DEFROST,DISCHARGE, HEAT EXCHANGER
10	T7W E72 202	THERMISTOR	1	1	1	RT65	AMBIENT
11	R01 E99 202	THERMISTOR(HS)	1	1	1	RT64	FIN(HEAT SINK)
12	T7W M07 323	POWER BOARD	1	1	1		Includes SILICON
13	T7W A03 371	HEAT SINK	1	1	1		Includes SCREWS

MXZ-5C42NA

1-7. OUTDOOR UNIT STRUCTURAL PARTS AND FUNCTIONAL PARTS



1-7. OUTDOOR UNIT STRUCTURAL PARTS AND FUNCTIONAL PARTS

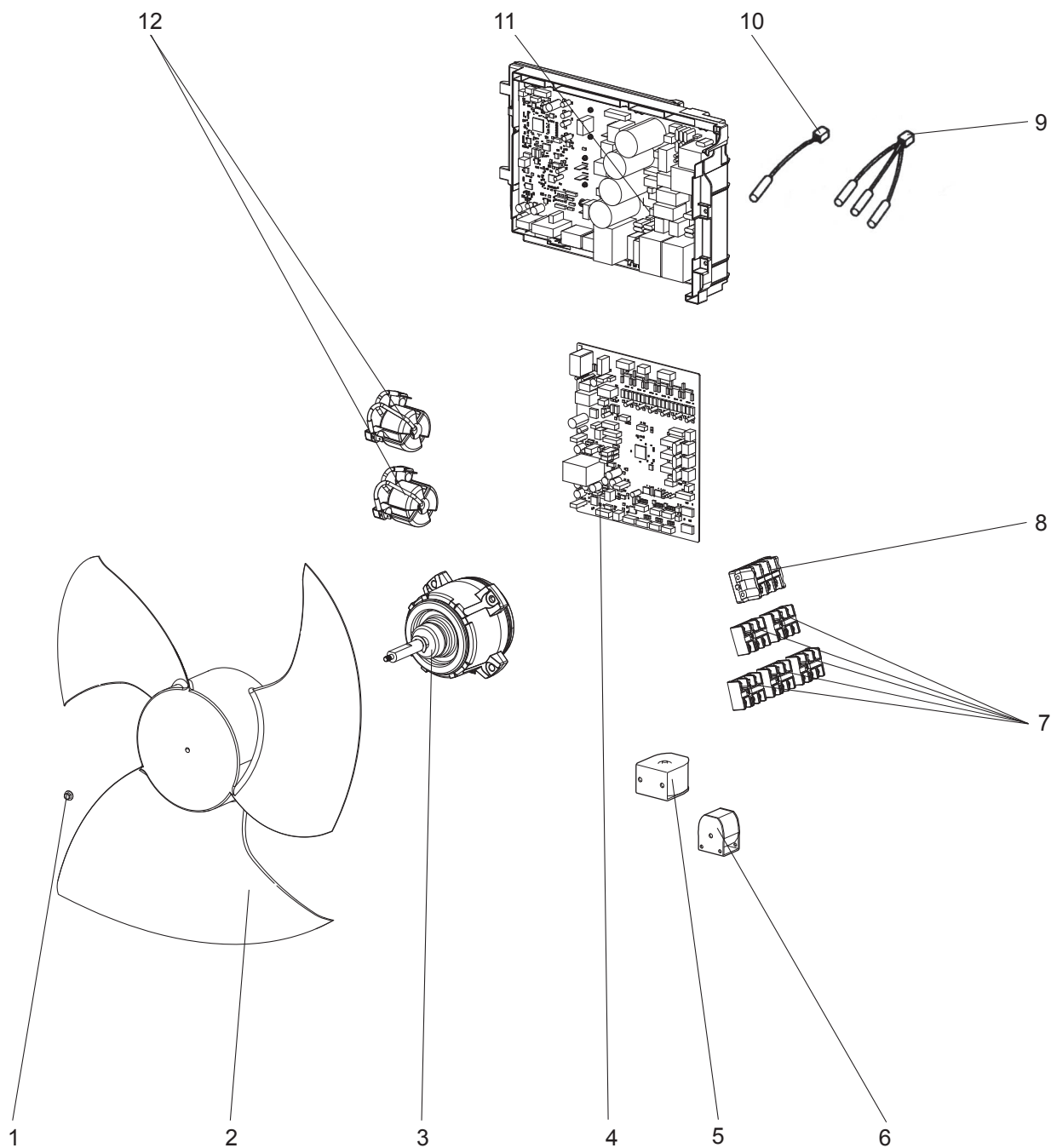
1. The part quantity below indicates the required number of pieces per unit.

2. The circled No. indicates that the part is not shown in the figure.

No.	Part No.	Part Name	MXZ-5C42NA	Symbol in Wiring Diagram	Remarks
1	E22 N99 232	FRONT PANEL	1		
2	E27 A15 531	ICE GUARD	1		
3	E27 942 521	GRILLE	1		
4	E22 N99 290	BASE ASSEMBLY	1		
5	E22 N99 900	COMPRESSOR	1	MC	MNB33FBTMC-L
6	E22 267 506	COMPRESSOR RUBBER SET	3		3 RUBBERS SET
7	E22 N99 640	EXPANSION VALVE	1		E room
7	E22 P64 493	LEV COIL	1	LEV E	E room
8	E22 N99 640	EXPANSION VALVE	1		D room
8	E22 P63 493	LEV COIL	1	LEV D	D room
9	E22 N99 640	EXPANSION VALVE	1		C room
9	E22 P02 493	LEV COIL	1	LEV C	C room
10	E22 N99 640	EXPANSION VALVE	1		B room
10	E22 P01 493	LEV COIL	1	LEV B	B room
11	E22 N99 640	EXPANSION VALVE	1		A room
11	E22 N99 493	LEV COIL	1	LEV A	A room
12	E22 P01 009	HANDLE	1		
13	E22 N99 245	SERVICE PANEL	1		Without LABEL
14	E22 N99 009	HANDLE (BACK)	1		
15	E22 N99 978	CONDUIT PLATE (TOP)	1		
15	E22 P01 978	CONDUIT PLATE (UNDER)	1		
16	E22 N99 233	BACK PANEL	1		
17	E22 D37 666	UNION (GAS) (ø12.7)	1		ø1/2, A room
18	E22 D36 666	UNION (GAS) (ø9.52)	4		ø3/8, B, C, D, E room
19	E22 D36 667	UNION (LIQUID) (ø6.35)	5		ø1/4, A, B, C, D, E room
20	E22 N99 661	STOP VALVE (GAS) (ø15.88)	1		ø5/8
21	E22 N99 932	ACCUMULATOR	1		
22	E22 N99 662	STOP VALVE (LIQUID) (ø9.52)	1		ø3/8
23	E22 P64 814	BACK PILLAR	1		
24	E22 N99 641	SERVICE PORT	2		
25	E22 N99 961	4-WAY VALVE	1		
26	E22 853 646	HIGH PRESSURE SWITCH	1	HPS	4.8 MPa (48.9 kg/cm ²)
27	E22 N99 293	SEPARATOR	1		
28	E22 N99 523	REAR GUARD	1		
29	E22 N99 297	TOP PANEL	1		
30	E22 P64 515	MOTOR SUPPORT	1		
31	E22 N99 630	OUTDOOR HEAT EXCHANGER (TOP)	1		Includes capillary tubes
32	E22 P01 630	OUTDOOR HEAT EXCHANGER (UNDER)	1		Includes capillary tubes
33	E22 N99 086	SIDE PANEL-L	1		
34	E27 943 009	HANDLE (REAR)	1		
35	E27 942 009	HANDLE (FRONT)	1		
36	E22 N99 492	2-WAY SOLENOID VALVE	1		
37	E22 N99 936	CAPILLARY TUBE (ø4.0 x ø3.0 x 200)	2		O.D. 0.16 x I.D. 0.12 x 7.88
38	E22 939 936	CAPILLARY TUBE (ø4.0 x ø2.8 x 100)	5		O.D. 0.16 x I.D. 0.11 x 3.94
39	E22 820 936	CAPILLARY TUBE (ø2.5 x ø0.6 x 1000)	1		O.D. 0.10 x I.D. 0.02 x 39.37

MXZ-5C42NA

1-8. OUTDOOR UNIT FUNCTIONAL PARTS AND ELECTRICAL PARTS



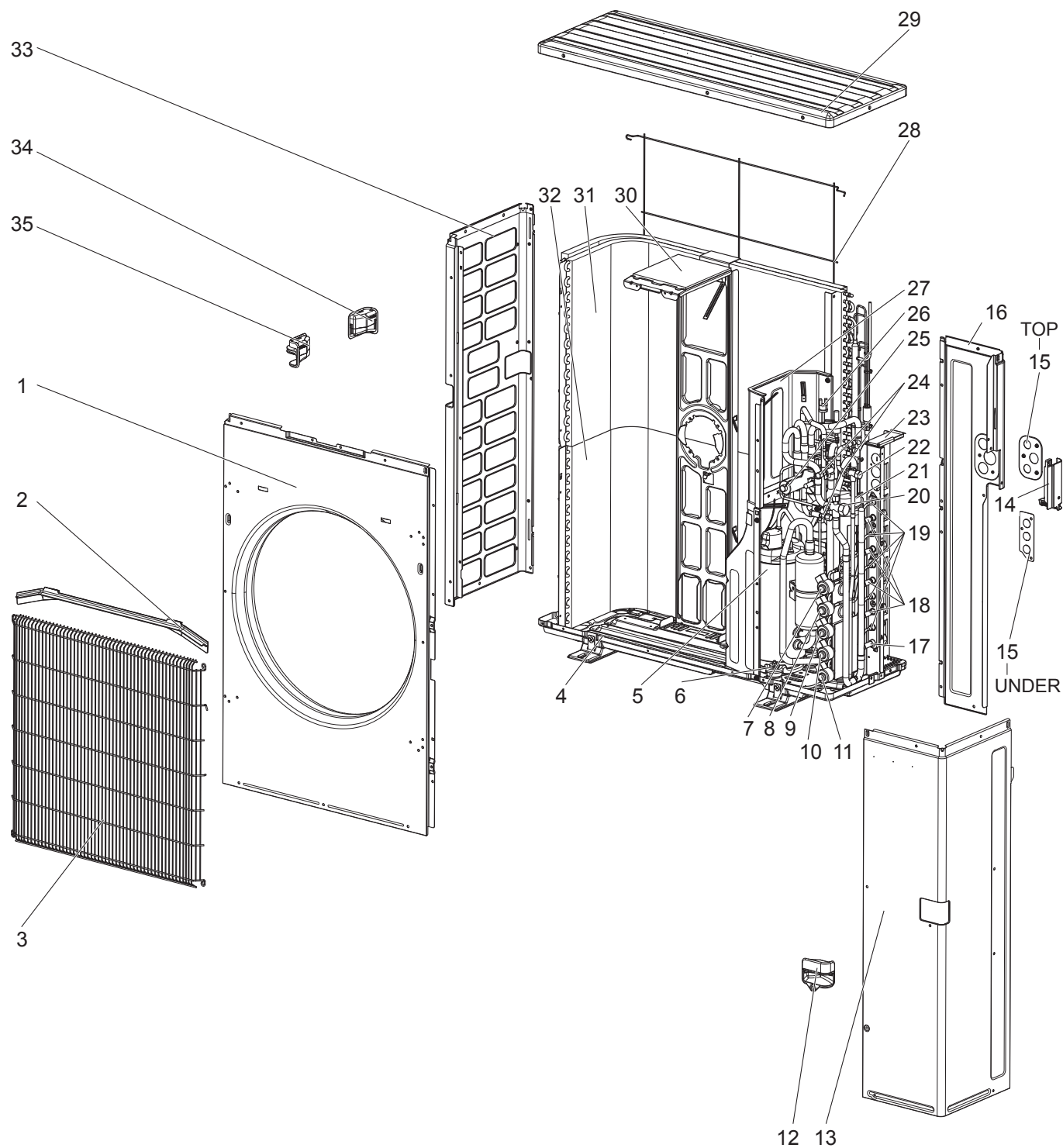
1-8. OUTDOOR UNIT FUNCTIONAL PARTS AND ELECTRICAL PARTS

1. The part quantity below indicates the required number of pieces per unit.

No.	Part No.	Part Name	MXZ-5C42NA	Symbol in Wiring Diagram	Remarks
1	E27 A15 508	PROPELLER FAN NUT	1		
2	E22 N99 501	PROPELLER FAN	1		
3	E22 R55 301	OUTDOOR FAN MOTOR	1	MF	SIC-81FW-D888-□
4	E22 92H 450	OUTDOOR CONTROL P.C. BOARD	1		
5	E22 P01 490	2-WAY VALVE SOLENOID COIL	1	21S2	
6	E22 N99 490	R.V. COIL	1	21S4	
7	E22 C92 375	TERMINAL BLOCK	5	TB2,3,4,5,6	Indoor unit connecting
8	E22 N99 374	TERMINAL BLOCK	1	TB1	Power supply
9	E22 N99 308	THERMISTOR SET	1	RT61, RT62, RT68	DEFROST, DISCHARGE, OUTDOOR HEAT EXCHANGER
10	E22 N99 309	AMBIENT TEMPERATURE THERMISTOR	1	RT65	
11	E22 N99 440	OUTDOOR POWER P.C. BOARD	1		Includes heat sink and RT64
12	E22 N99 337	REACTOR	2	L1,L2	

MXZ-5C42NA2 MXZ-5C42NA3

1-9. OUTDOOR UNIT STRUCTURAL PARTS AND FUNCTIONAL PARTS



1-9. OUTDOOR UNIT STRUCTURAL PARTS AND FUNCTIONAL PARTS

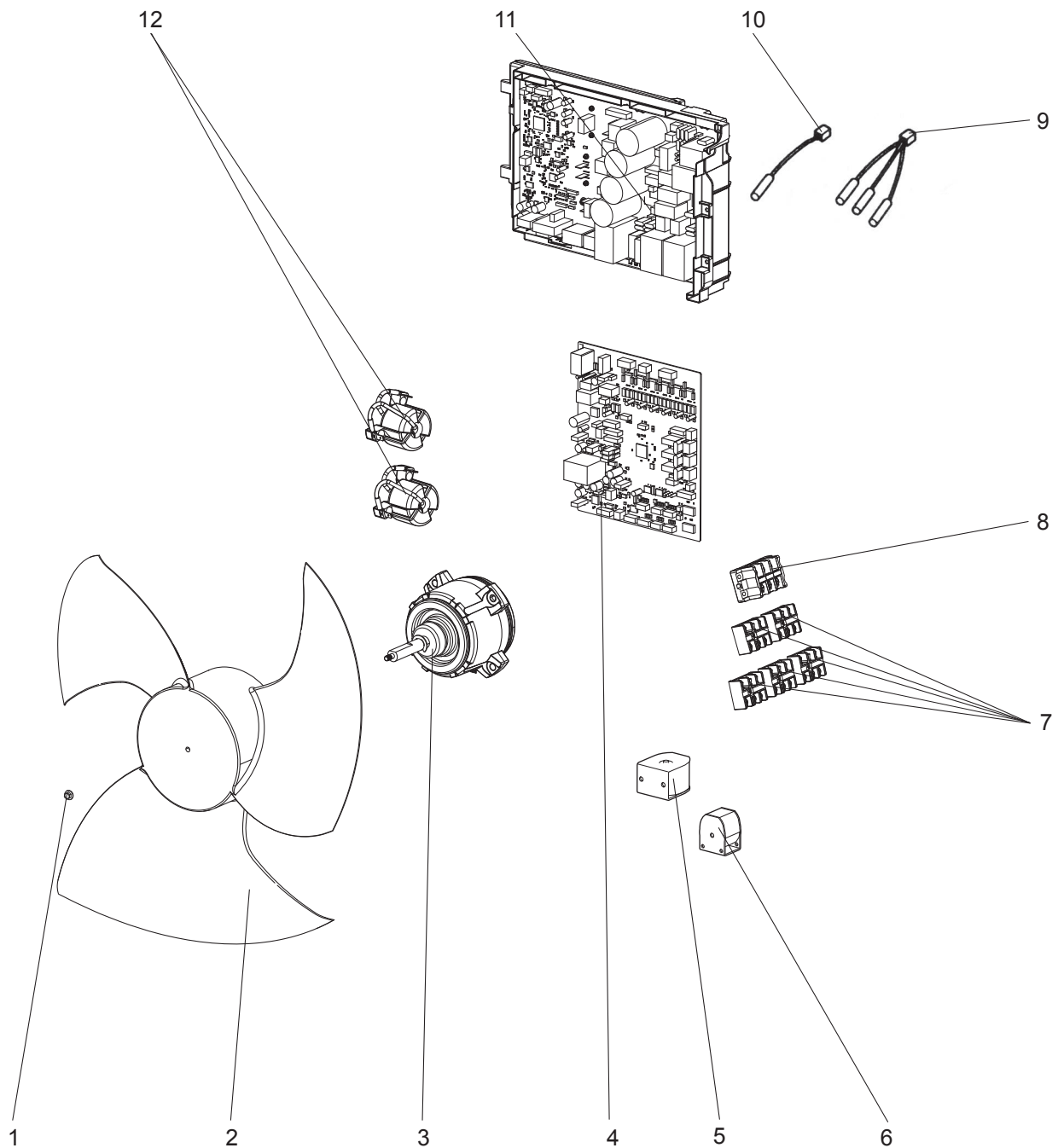
1. The part quantity below indicates the required number of pieces per unit.

2. The circled No. indicates that the part is not shown in the figure.

No.	Part No.	Part Name	MXZ-5C42NA2 - U1	MXZ-5C42NA3 - U1	Symbol in Wiring Diagram	Remarks
1	E22 N99 232	FRONT PANEL	1	1		
2	E27 A15 531	ICE GUARD	1	1		
3	E27 942 521	GRILLE	1	1		
4	E22 N99 290	BASE ASSEMBLY	1	1		
5	E22 N99 900	COMPRESSOR	1	1	MC	MNB33FBTMC-L
6	E22 267 506	COMPRESSOR RUBBER SET	3	3		3 RUBBERS SET
7	E22 N99 640	EXPANSION VALVE	1	1		E room
7	E22 P64 493	LEV COIL	1	1	LEV E	E room, Connector: BLACK
8	E22 N99 640	EXPANSION VALVE	1	1		D room
8	E22 P63 493	LEV COIL	1	1	LEV D	D room, Connector: YELLOW
9	E22 N99 640	EXPANSION VALVE	1	1		C room
9	E22 P02 493	LEV COIL	1	1	LEV C	C room, Connector: BLUE
10	E22 N99 640	EXPANSION VALVE	1	1		B room
10	E22 P01 493	LEV COIL	1	1	LEV B	B room, Connector: RED
11	E22 N99 640	EXPANSION VALVE	1	1		A room
11	E22 N99 493	LEV COIL	1	1	LEV A	A room, Connector: WHITE
12	E22 P01 009	HANDLE	1	1		
13	E22 N99 245	SERVICE PANEL	1			Without LABEL
13	E22 09T 245	SERVICE PANEL		1		Without LABEL
14	E22 N99 009	HANDLE (BACK)	1	1		
15	E22 N99 978	CONDUIT PLATE (TOP)	1	1		
15	E22 P01 978	CONDUIT PLATE (UNDER)	1	1		
16	E22 N99 233	BACK PANEL	1	1		
17	E22 D37 666	UNION (GAS) (ø12.7)	1	1		ø1/2, A room
18	E22 D36 666	UNION (GAS) (ø9.52)	4	4		ø3/8, B, C, D, E room
19	E22 D36 667	UNION (LIQUID) (ø6.35)	5	5		ø1/4, A, B, C, D, E room
20	E22 N99 661	STOP VALVE (GAS) (ø15.88)	1	1		ø5/8
21	E22 N99 932	ACCUMULATOR	1	1		
22	E22 N99 662	STOP VALVE (LIQUID) (ø9.52)	1	1		ø3/8
23	E22 P64 814	BACK PILLAR	1	1		
24	E22 N99 641	SERVICE PORT	2	2		
25	E22 N99 961	4-WAY VALVE	1			
25	E22 24R 961	4-WAY VALVE		1		
26	E22 W66 646	HIGH PRESSURE SWITCH	1	1	HPS	4.41 MPa (45.0 kg/cm ²)
27	E22 N99 293	SEPARATOR	1	1		
28	E22 N99 523	REAR GUARD	1	1		
29	E22 N99 297	TOP PANEL	1			
29	E22 09T 297	TOP PANEL		1		
30	E22 P64 515	MOTOR SUPPORT	1	1		
31	E22 N99 630	OUTDOOR HEAT EXCHANGER (TOP)	1	1		Includes capillary tubes
32	E22 P01 630	OUTDOOR HEAT EXCHANGER (UNDER)	1	1		Includes capillary tubes
33	E22 N99 086	SIDE PANEL-L	1	1		
34	E27 943 009	HANDLE (REAR)	1	1		
35	E27 942 009	HANDLE (FRONT)	1	1		
36	E22 N99 492	2-WAY SOLENOID VALVE	1	1		
37	E22 N99 936	CAPILLARY TUBE (ø4.0 x ø3.0 x 200)	2			O.D. 0.16 x I.D. 0.12 x 7.88
38	E22 939 936	CAPILLARY TUBE (ø4.0 x ø2.8 x 100)	5	5		O.D. 0.16 x I.D. 0.11 x 3.94
39	E22 820 936	CAPILLARY TUBE (ø2.5 x ø0.6 x 1000)	1	1		O.D. 0.10 x I.D. 0.02 x 39.37



MXZ-5C42NA2 MXZ-5C42NA3

1-10. OUTDOOR UNIT FUNCTIONAL PARTS AND ELECTRICAL PARTS



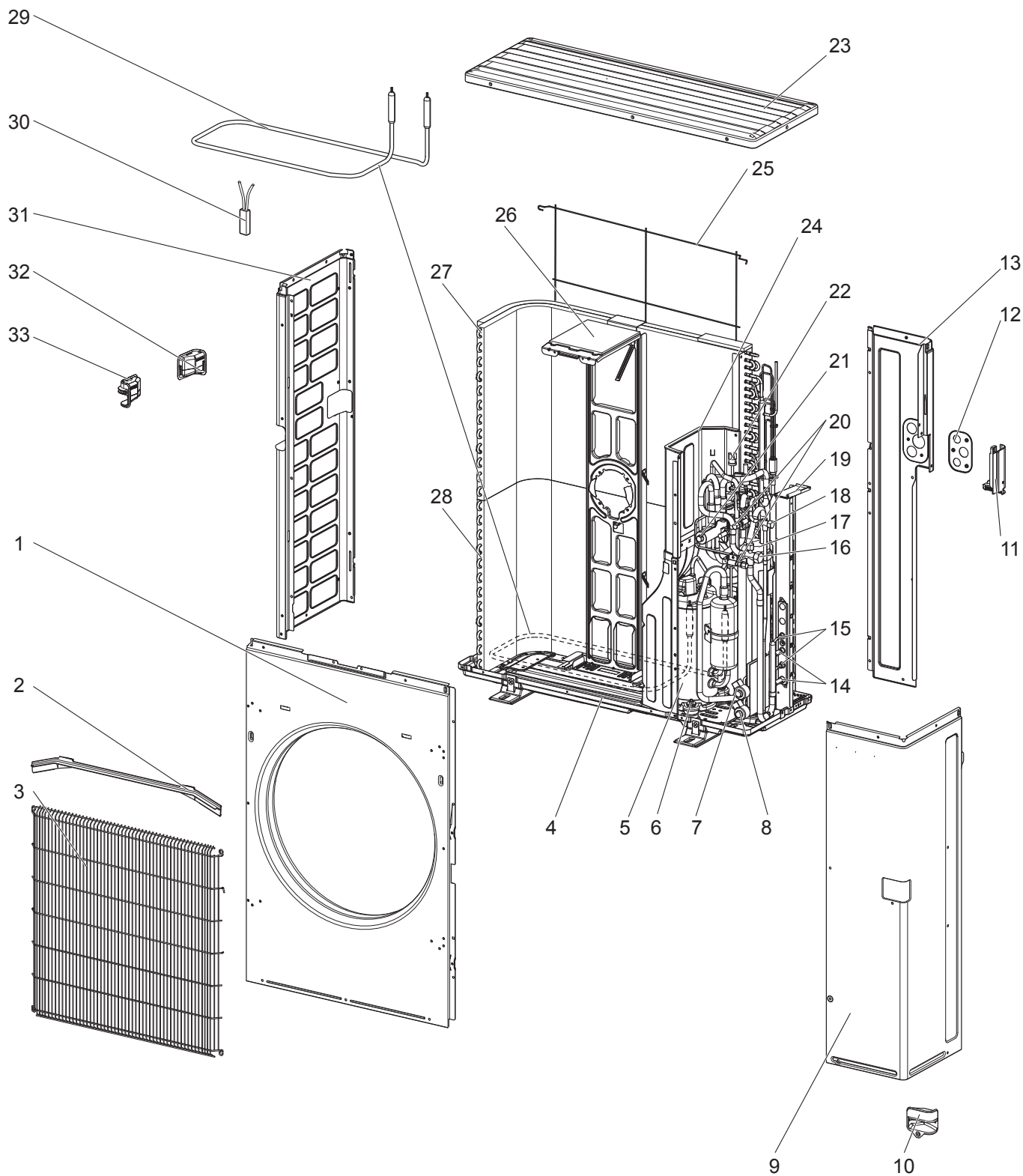
1-10. OUTDOOR UNIT FUNCTIONAL PARTS AND ELECTRICAL PARTS

1. The part quantity below indicates the required number of pieces per unit.

No.	Part No.	Part Name	MXZ-5C42NA2 - 	MXZ-5C42NA3 - 	Symbol in Wiring Diagram	Remarks
1	E27 A15 508	PROPELLER FAN NUT	1	1		
2	E22 N99 501	PROPELLER FAN	1	1		
3	E22 W69 301	OUTDOOR FAN MOTOR	1	1	MF	SIC-88FWJ-D888-□
4	E22 02F 450	OUTDOOR CONTROL P.C. BOARD	1			
4	E22 12T 450	OUTDOOR CONTROL P.C. BOARD		1		
5	E22 P01 490	2-WAY VALVE SOLENOID COIL	1	1	21S2	
6	E22 N99 490	R.V. COIL	1	1	21S4	
7	E22 C92 375	TERMINAL BLOCK	5	5	TB2,3,4,5,6	Indoor unit connecting
8	E22 N99 374	TERMINAL BLOCK	1	1	TB1	Power supply
9	E22 N99 308	THERMISTOR SET	1		RT61, RT62, RT68	DEFROST, DISCHARGE, OUTDOOR HEAT EXCHANGER
9	E22 Y96 308	THERMISTOR SET		1	RT61, RT62, RT68	DEFROST, DISCHARGE, OUTDOOR HEAT EXCHANGER
10	E22 N99 309	AMBIENT TEMPERATURE THERMISTOR	1	1	RT65	
11	E22 R55 440	OUTDOOR POWER P.C. BOARD	1			Includes heat sink and RT64
11	E22 18B 440	OUTDOOR POWER P.C. BOARD		1		Includes heat sink and RT64
12	E22 N99 337	REACTOR	2		L1,L2	
12	E22 96E 337	REACTOR		2	L1,L2	

MXZ-2C20NAHZ

1-11. OUTDOOR UNIT STRUCTURAL PARTS AND FUNCTIONAL PARTS



1-11. OUTDOOR UNIT STRUCTURAL PARTS AND FUNCTIONAL PARTS

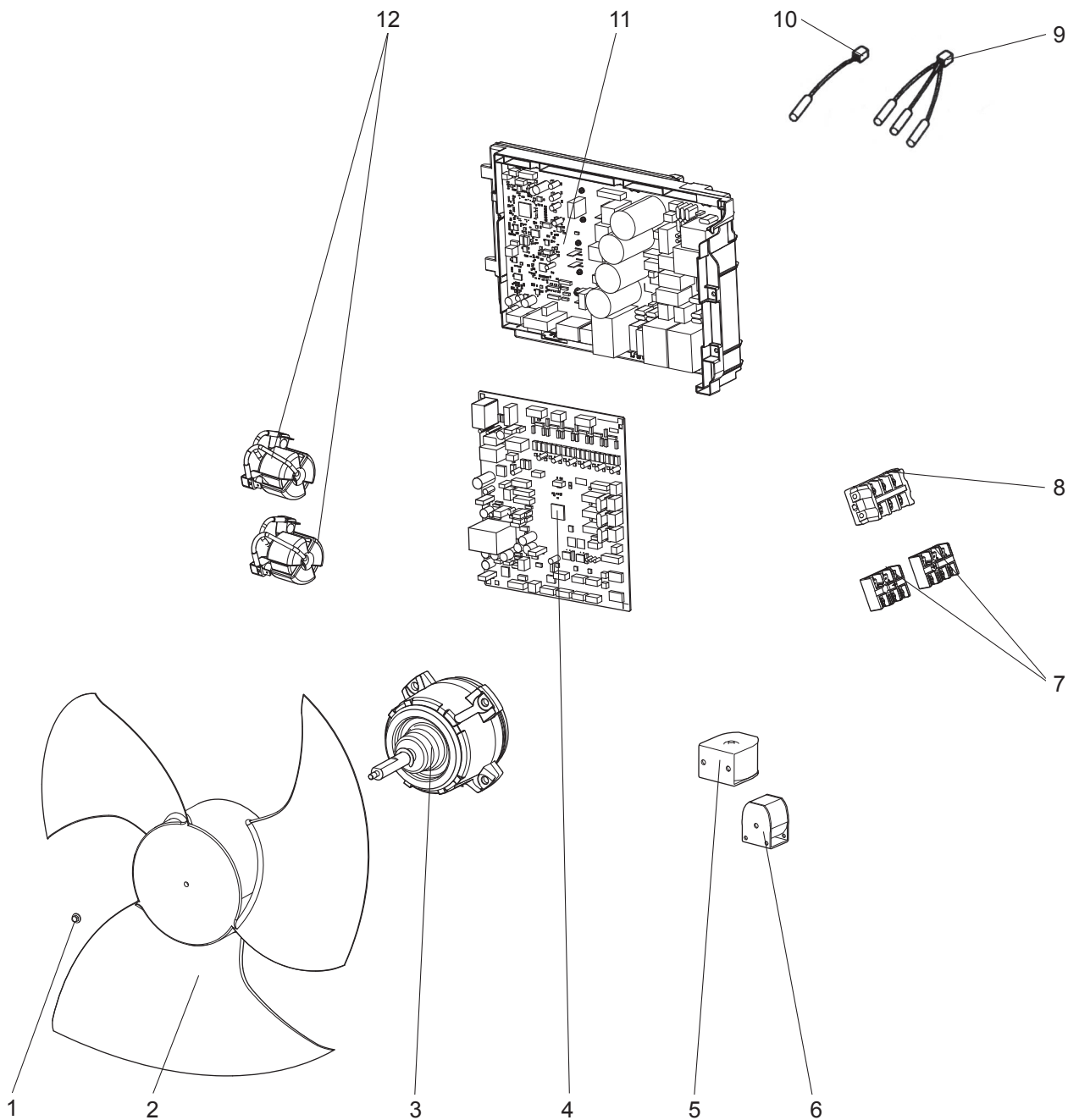
1. The part quantity below indicates the required number of pieces per unit.

2. The circled No. indicates that the part is not shown in the figure.

No.	Part No.	Part Name	MXZ-2C20NAHZ	Symbol in Wiring Diagram	Remarks
1	E22 N99 232	FRONT PANEL	1		
2	E27 A15 531	ICE GUARD	1		
3	E27 942 521	GRILLE	1		
4	E22 N99 290	BASE ASSEMBLY	1		
5	E22 N99 900	COMPRESSOR	1	MC	MNB33FBTMC-L
6	E22 267 506	COMPRESSOR RUBBER SET	3		3 RUBBERS SET
7	E22 N99 640	EXPANSION VALVE	1		B room
7	E22 P01 493	LEV COIL	1	LEV B	B room
8	E22 N99 640	EXPANSION VALVE	1		A room
8	E22 N99 493	LEV COIL	1	LEV A	A room
9	E22 N99 245	SERVICE PANEL	1		
10	E22 P01 009	HANDLE	1		
11	E22 N99 009	HANDLE (BACK)	1		
12	E22 N99 978	CONDUIT PLATE	1		
13	E22 N99 233	BACK PANEL	1		
14	E22 D36 666	UNION (GAS) (ø9.52)	2		ø3/8, A, B room
15	E22 D36 667	UNION (LIQUID) (ø6.35)	2		ø1/4, A, B room
16	E22 N99 661	STOP VALVE (GAS) (ø15.88)	1		ø5/8
17	E22 N99 932	ACCUMULATOR	1		
18	E22 N99 662	STOP VALVE (LIQUID) (ø9.52)	1		ø3/8
19	E22 N99 814	BACK PILLAR	1		
20	E22 N99 641	SERVICE PORT	2		
21	E22 N99 961	4-WAY VALVE	1		
22	E22 853 646	HIGH PRESSURE SWITCH	1	HPS	4.8 MPa (48.9 kg/cm ²)
23	E22 N99 297	TOP PANEL	1		
24	E22 N99 293	SEPARATOR	1		
25	E22 N99 523	REAR GUARD	1		
26	E22 N99 515	MOTOR SUPPORT	1		
27	E22 N99 630	OUTDOOR HEAT EXCHANGER (TOP)	1		Includes capillary tubes
28	E22 P01 630	OUTDOOR HEAT EXCHANGER (UNDER)	1		Includes capillary tubes
29	E22 N99 526	DEFROST HEATER	1	H	
30	E22 N99 381	HEATER PROTECTOR	1	26H	
31	E22 N99 086	SIDE PANEL (L)	1		
32	E27 943 009	HANDLE (REAR)	1		
33	E27 942 009	HANDLE (FRONT)	1		
(34)	E22 N99 492	2-WAY SOLENOID VALVE	1		
(35)	E22 939 936	CAPILLARY TUBE (ø4.0 x ø2.8 x 100)	2		O.D. 0.16 x I.D. 0.11 x 3.94
(36)	E22 820 936	CAPILLARY TUBE (ø2.5 x ø0.6 x 1000)	1		O.D. 0.10 x I.D. 0.02 x 39.37

MXZ-2C20NAHZ

1-12. OUTDOOR UNIT FUNCTIONAL PARTS AND ELECTRICAL PARTS



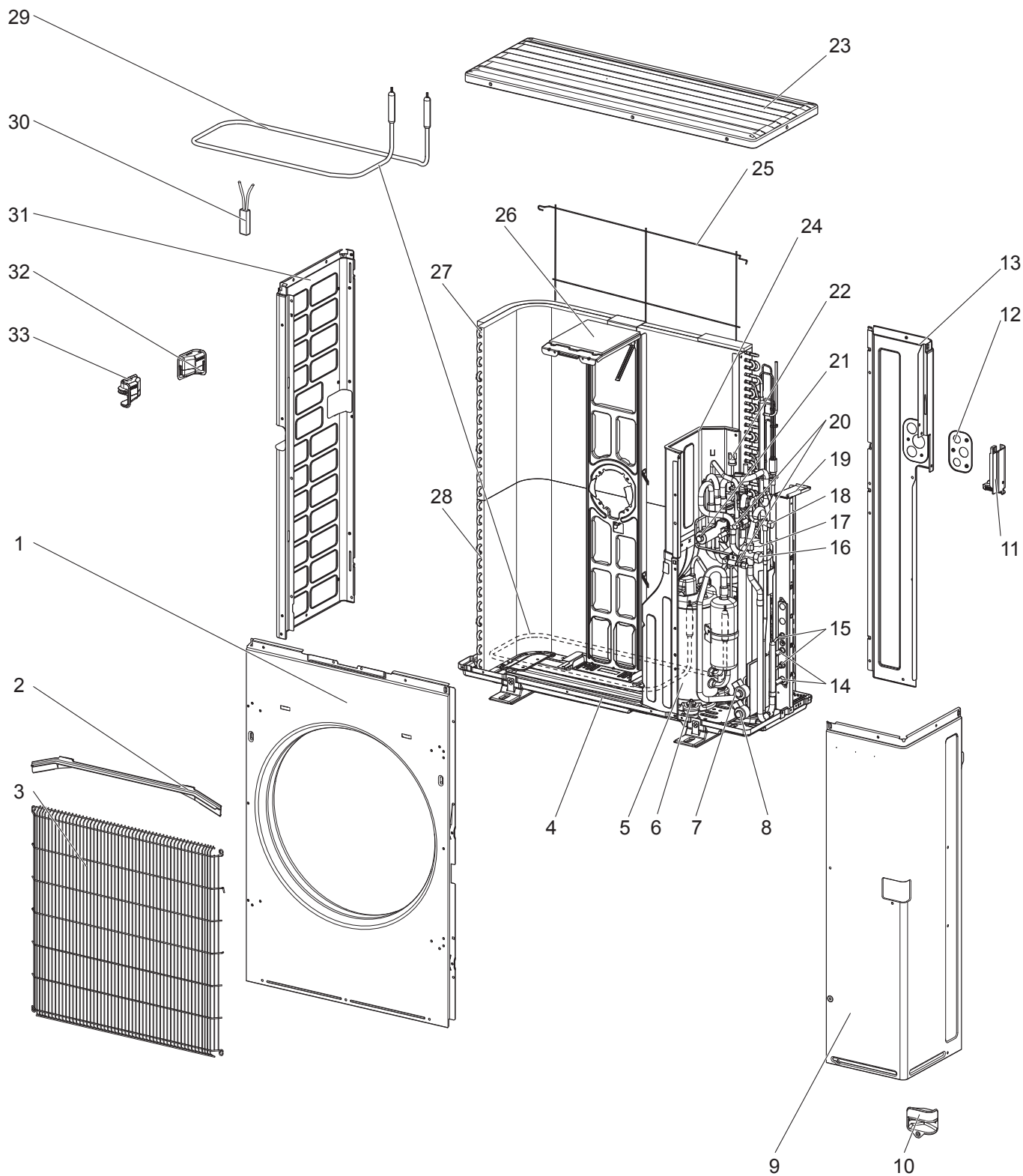
1-12. OUTDOOR UNIT FUNCTIONAL PARTS AND ELECTRICAL PARTS

1. The part quantity below indicates the required number of pieces per unit.

No.	Part No.	Part Name	MXZ-2C20NAHZ	Symbol in Wiring Diagram	Remarks
1	E27 A15 508	PROPELLER FAN NUT	1		
2	E22 N99 501	PROPELLER FAN	1		
3	E22 R55 301	OUTDOOR FAN MOTOR	1	MF	SIC-81FW-D888-□
4	E22 89H 450	OUTDOOR CONTROL P.C. BOARD	1		
5	E22 P01 490	2-WAY VALVE SOLENOID COIL	1	21S2	
6	E22 N99 490	R.V. COIL	1	21S4	
7	E22 C92 375	TERMINAL BLOCK	2	TB2,3	Indoor unit connecting
8	E22 N99 374	TERMINAL BLOCK	1	TB1	Power supply
9	E22 N99 308	THERMISTOR SET	1	RT61, RT62, RT68	DEFROST, DISCHARGE, OUTDOOR HEAT EXCHANGER
10	E22 N99 309	AMBIENT TEMPERATURE THERMISTOR	1	RT65	
11	E22 N99 440	OUTDOOR POWER P.C. BOARD	1		Includes heat sink and RT64
12	E22 N99 337	REACTOR	2	L1,L2	

MXZ-2C20NAHZ2 MXZ-2C20NAHZ3

1-13. OUTDOOR UNIT STRUCTURAL PARTS AND FUNCTIONAL PARTS



1-13. OUTDOOR UNIT STRUCTURAL PARTS AND FUNCTIONAL PARTS

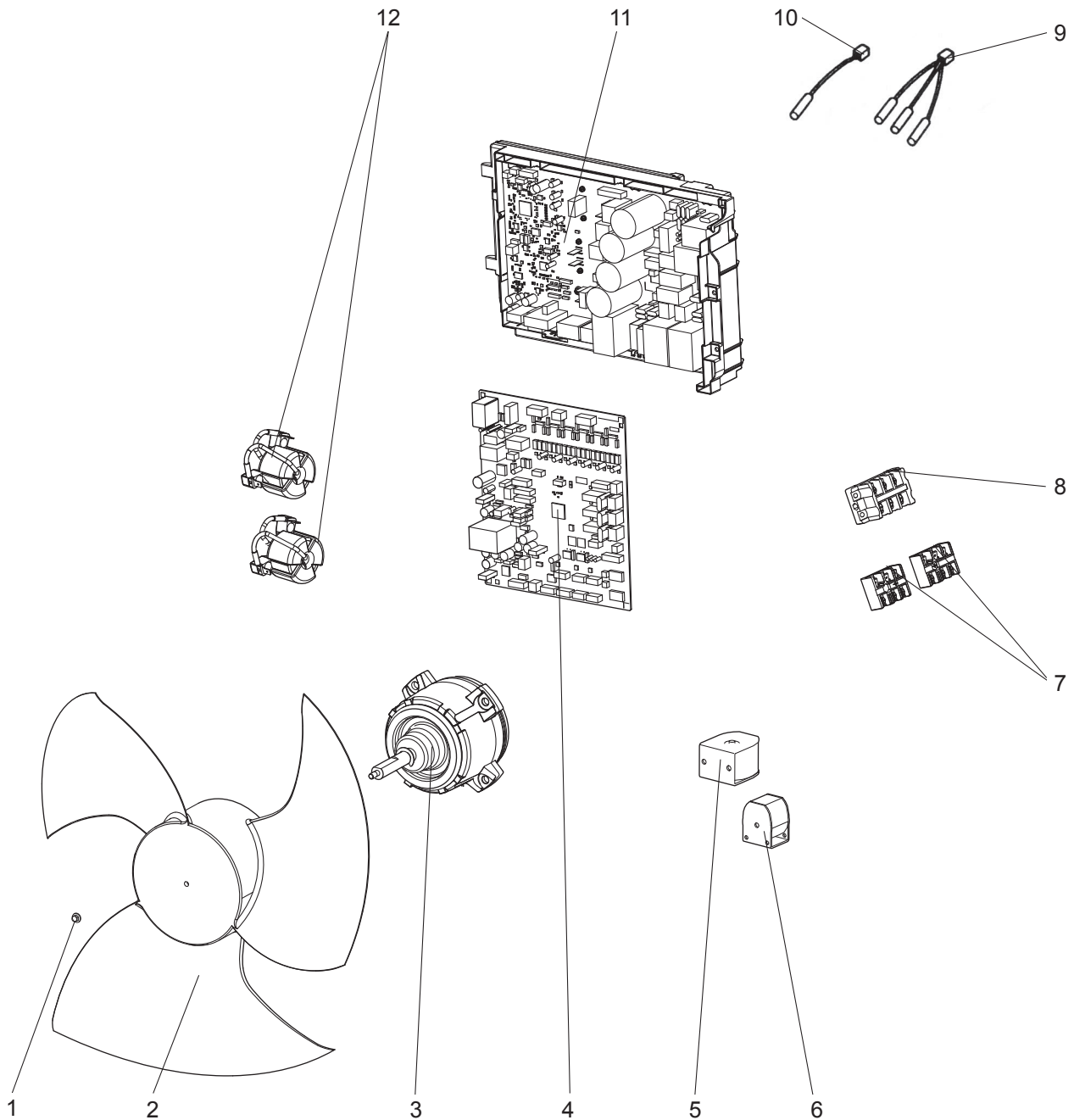
1. The part quantity below indicates the required number of pieces per unit.

2. The circled No. indicates that the part is not shown in the figure.

No.	Part No.	Part Name	MXZ-2C20NAHZ2-U1	MXZ-2C20NAHZ3-U1	Symbol in Wiring Diagram	Remarks
1	E22 N99 232	FRONT PANEL	1	1		
2	E27 A15 531	ICE GUARD	1	1		
3	E27 942 521	GRILLE	1	1		
4	E22 N99 290	BASE ASSEMBLY	1	1		
5	E22 N99 900	COMPRESSOR	1	1	MC	MNB33FBTMC-L
6	E22 267 506	COMPRESSOR RUBBER SET	3	3		3 RUBBERS SET
7	E22 N99 640	EXPANSION VALVE	1	1		B room
7	E22 P01 493	LEV COIL	1	1	LEV B	B room, Connector: RED
8	E22 N99 640	EXPANSION VALVE	1	1		A room
8	E22 N99 493	LEV COIL	1	1	LEV A	A room, Connector: WHITE
9	E22 N99 245	SERVICE PANEL	1			
9	E22 09T 245	SERVICE PANEL		1		
10	E22 P01 009	HANDLE	1	1		
11	E22 N99 009	HANDLE (BACK)	1	1		
12	E22 N99 978	CONDUIT PLATE	1	1		
13	E22 N99 233	BACK PANEL	1	1		
14	E22 D36 666	UNION (GAS) (ø9.52)	2	2		ø3/8, A, B room
15	E22 D36 667	UNION (LIQUID) (ø6.35)	2	2		ø1/4, A, B room
16	E22 N99 661	STOP VALVE (GAS) (ø15.88)	1	1		ø5/8
17	E22 N99 932	ACCUMULATOR	1	1		
18	E22 N99 662	STOP VALVE (LIQUID) (ø9.52)	1	1		ø3/8
19	E22 N99 814	BACK PILLAR	1	1		
20	E22 N99 641	SERVICE PORT	2	2		
21	E22 N99 961	4-WAY VALVE	1			
21	E22 24R 961	4-WAY VALVE		1		
22	E22 W66 646	HIGH PRESSURE SWITCH	1	1	HPS	4.41 MPa (45.0 kg/cm ²)
23	E22 N99 297	TOP PANEL	1			
23	E22 09T 297	TOP PANEL		1		
24	E22 N99 293	SEPARATOR	1	1		
25	E22 N99 523	REAR GUARD	1	1		
26	E22 N99 515	MOTOR SUPPORT	1	1		
27	E22 N99 630	OUTDOOR HEAT EXCHANGER (TOP)	1	1		Includes capillary tubes
28	E22 P01 630	OUTDOOR HEAT EXCHANGER (UNDER)	1	1		Includes capillary tubes
29	E22 N99 526	DEFROST HEATER	1		H	BH70N837H01
29	E22 96E 526	DEFROST HEATER		1	H	BH70N837H02
30	E22 N99 381	HEATER PROTECTOR	1	1	26H	
31	E22 N99 086	SIDE PANEL (L)	1	1		
32	E27 943 009	HANDLE (REAR)	1	1		
33	E27 942 009	HANDLE (FRONT)	1	1		
③④	E22 N99 492	2-WAY SOLENOID VALVE	1	1		
③⑤	E22 939 936	CAPILLARY TUBE (ø4.0 x ø2.8 x 100)	2	2		O.D. 0.16 x I.D. 0.11 x 3.94
③⑥	E22 820 936	CAPILLARY TUBE (ø2.5 x ø0.6 x 1000)	1	1		O.D. 0.10 x I.D. 0.02 x 39.37



MXZ-2C20NAHZ2 MXZ-2C20NAHZ3

1-14. OUTDOOR UNIT FUNCTIONAL PARTS AND ELECTRICAL PARTS

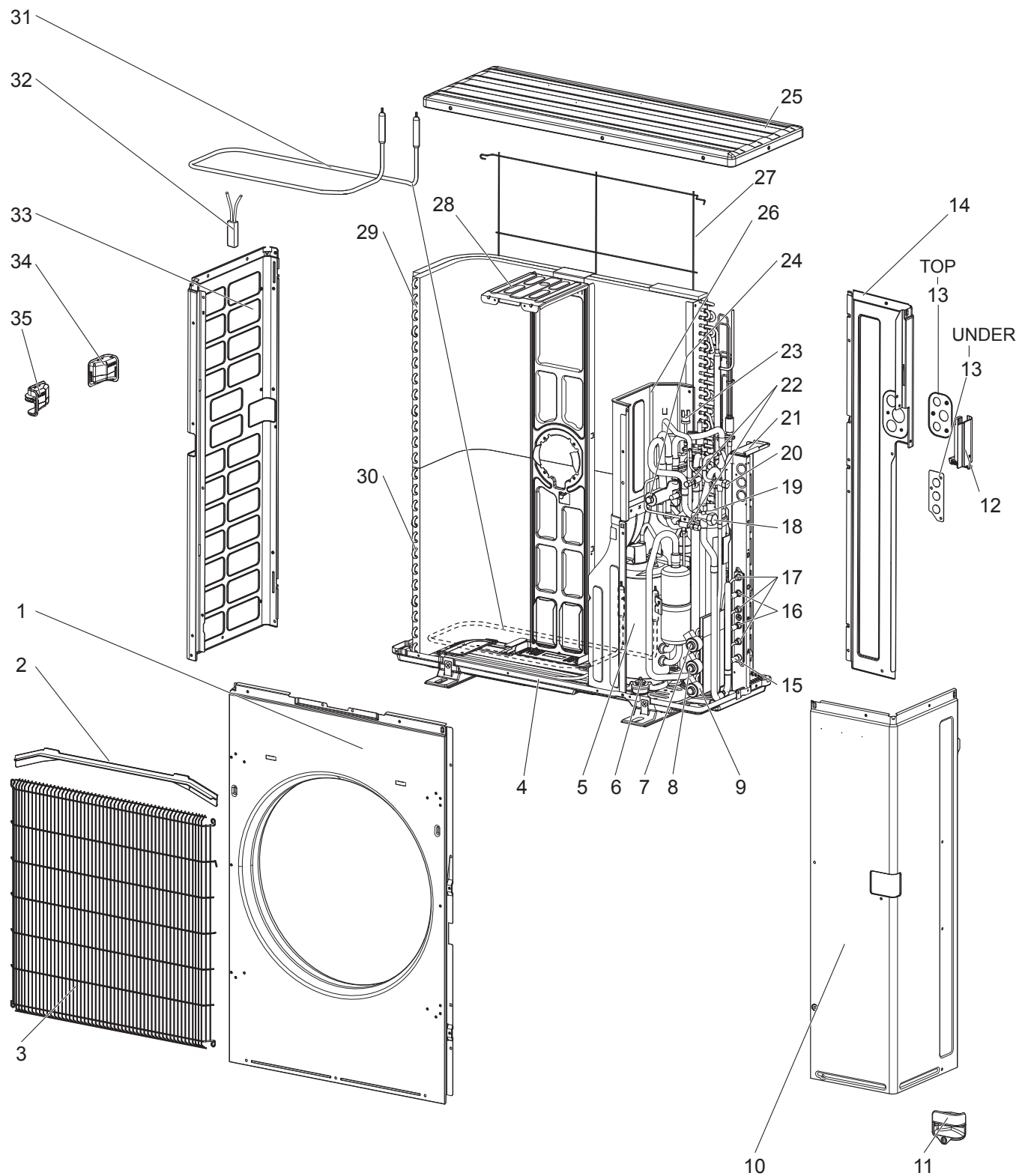


1-14. OUTDOOR UNIT FUNCTIONAL PARTS AND ELECTRICAL PARTS

1. The part quantity below indicates the required number of pieces per unit.

No.	Part No.	Part Name	MXZ-2C20NAHZ2 - 	MXZ-2C20NAHZ3 - 	Symbol in Wiring Diagram	Remarks
1	E27 A15 508	PROPELLER FAN NUT	1	1		
2	E22 N99 501	PROPELLER FAN	1	1		
3	E22 W69 301	OUTDOOR FAN MOTOR	1	1	MF	SIC-88FWJ-D888-□
4	E22 96E 450	OUTDOOR CONTROL P.C. BOARD	1			
4	E22 09T 450	OUTDOOR CONTROL P.C. BOARD		1		
5	E22 P01 490	2-WAY VALVE SOLENOID COIL	1	1	21S2	
6	E22 N99 490	R.V. COIL	1	1	21S4	
7	E22 C92 375	TERMINAL BLOCK	2	2	TB2,3	Indoor unit connecting
8	E22 N99 374	TERMINAL BLOCK	1	1	TB1	Power supply
9	E22 N99 308	THERMISTOR SET	1		RT61, RT62, RT68	DEFROST, DISCHARGE, OUTDOOR HEAT EXCHANGER
9	E22 Y96 308	THERMISTOR SET		1	RT61, RT62, RT68	DEFROST, DISCHARGE, OUTDOOR HEAT EXCHANGER
10	E22 N99 309	AMBIENT TEMPERATURE THERMISTOR	1	1	RT65	
11	E22 R55 440	OUTDOOR POWER P.C. BOARD	1			Includes heat sink and RT64
11	E22 18B 440	OUTDOOR POWER P.C. BOARD		1		Includes heat sink and RT64
12	E22 N99 337	REACTOR	2		L1,L2	
12	E22 96E 337	REACTOR		2	L1,L2	

MXZ-3C24NAHZ MXZ-3C30NAHZ
1-15. OUTDOOR UNIT STRUCTURAL PARTS AND FUNCTIONAL PARTS



1-15. OUTDOOR UNIT STRUCTURAL PARTS AND FUNCTIONAL PARTS

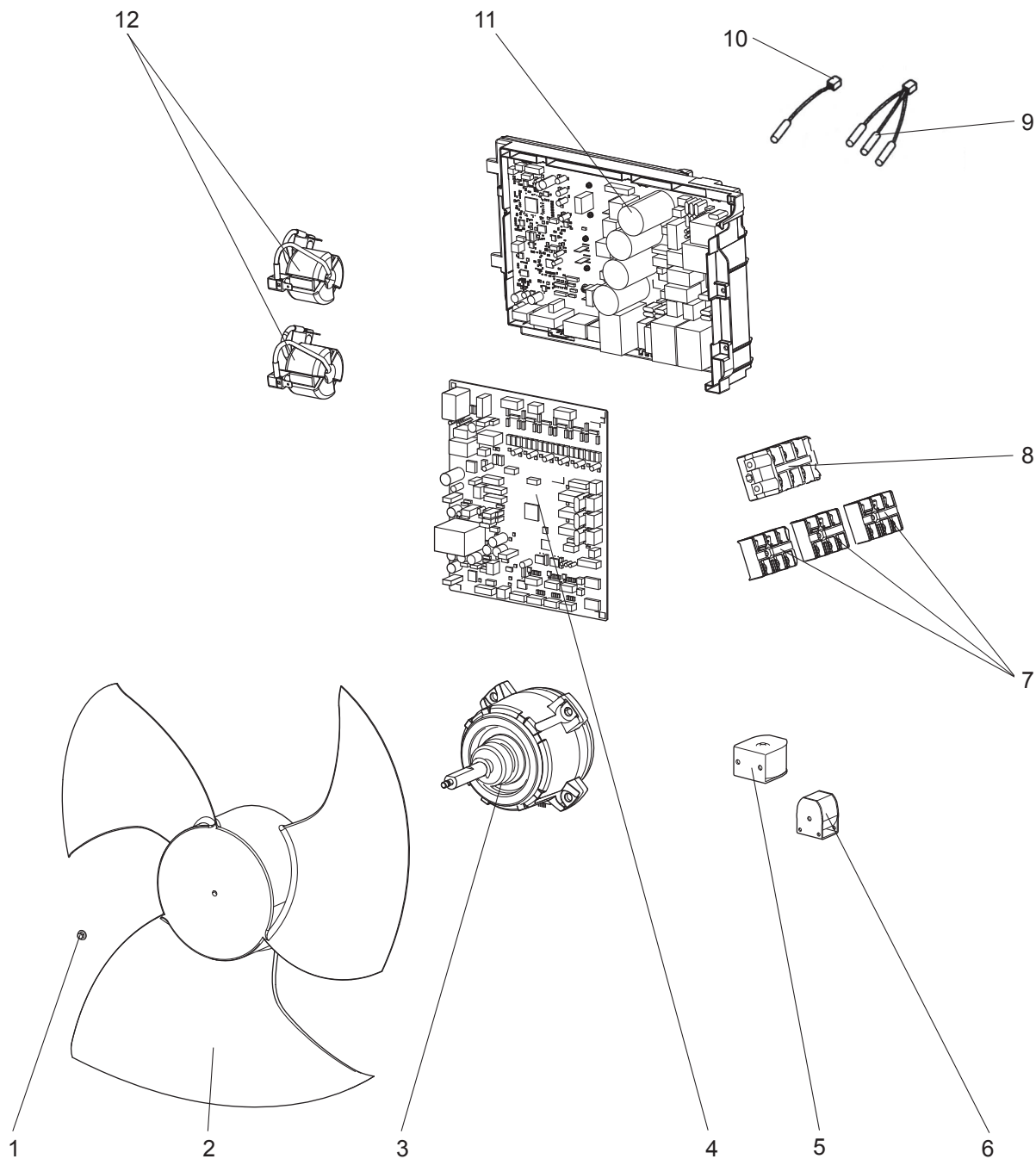
1. The part quantity below indicates the required number of pieces per unit.

2. The circled No. indicates that the part is not shown in the figure.

No.	Part No.	Part Name	MXZ-3C24NAHZ	MXZ-3C30NAHZ	Symbol in Wiring Diagram	Remarks
1	E22 N99 232	FRONT PANEL	1	1		
2	E27 A15 531	ICE GUARD	1	1		
3	E27 942 521	GRILLE	1	1		
4	E22 N99 290	BASE ASSEMBLY	1	1		
5	E22 N99 900	COMPRESSOR	1	1	MC	MNB33FBTMC-L
6	E22 267 506	COMPRESSOR RUBBER SET	3	3		3 RUBBERS SET
7	E22 N99 640	EXPANSION VALVE	1	1		C room
7	E22 P02 493	LEV COIL	1	1	LEV C	C room
8	E22 N99 640	EXPANSION VALVE	1	1		B room
8	E22 P01 493	LEV COIL	1	1	LEV B	B room
9	E22 N99 640	EXPANSION VALVE	1	1		A room
9	E22 N99 493	LEV COIL	1	1	LEV A	A room
10	E22 N99 245	SERVICE PANEL	1	1		Without LABEL
11	E22 P01 009	HANDLE	1	1		
12	E22 N99 009	HANDLE (BACK)	1	1		
13	E22 N99 978	CONDUIT PLATE (TOP)	1	1		
13	E22 P01 978	CONDUIT PLATE (UNDER)	1	1		
14	E22 N99 233	BACK PANEL (OUT)	1	1		
15	E22 D37 666	UNION (GAS) (ø12.7)	1	1		ø1/2, A room
16	E22 D36 666	UNION (GAS) (ø9.52)	2	2		ø3/8, B, C room
17	E22 D36 667	UNION (LIQUID) (ø6.35)	3	3		ø1/4, A, B, C room
18	E22 N99 661	STOP VALVE (GAS) (ø15.88)	1	1		ø5/8
19	E22 N99 932	ACCUMULATOR	1	1		
20	E22 N99 662	STOP VALVE (LIQUID) (ø9.52)	1	1		ø3/8
21	E22 P01 814	BACK PILLAR	1	1		
22	E22 N99 641	SERVICE PORT	2	2		
23	E22 853 646	HIGH PRESSURE SWITCH	1	1	HPS	4.8 MPa (48.9 kg/cm ²)
24	E22 N99 961	4-WAY VALVE	1	1		
25	E22 N99 297	TOP PANEL	1	1		Without LABEL
26	E22 N99 293	SEPARATOR	1	1		
27	E22 N99 523	REAR GUARD	1	1		
28	E22 N99 515	MOTOR SUPPORT	1	1		
29	E22 N99 630	OUTDOOR HEAT EXCHANGER (TOP)	1	1		Includes capillary tubes
30	E22 P01 630	OUTDOOR HEAT EXCHANGER (UNDER)	1	1		Includes capillary tubes
31	E22 N99 526	DEFROST HEATER	1	1	H	
32	E22 N99 381	HEATER PROTECTOR	1	1	26H	
33	E22 N99 086	SIDE PANEL (L)	1	1		
34	E27 943 009	HANDLE (REAR)	1	1		
35	E27 942 009	HANDLE (FRONT)	1	1		
36	E22 N99 492	2-WAY SOLENOID VALVE	1	1		
37	E22 939 936	CAPILLARY TUBE (ø4.0 x ø2.8 x 100)	3	3		O.D. 0.16 x I.D. 0.11 x 3.94
38	E22 820 936	CAPILLARY TUBE (ø2.5 x ø0.6 x 1000)	1	1		O.D. 0.10 x I.D. 0.02 x 39.37

MXZ-3C24NAHZ MXZ-3C30NAHZ

1-16. OUTDOOR UNIT FUNCTIONAL PARTS AND ELECTRICAL PARTS



1-16. OUTDOOR UNIT FUNCTIONAL PARTS AND ELECTRICAL PARTS

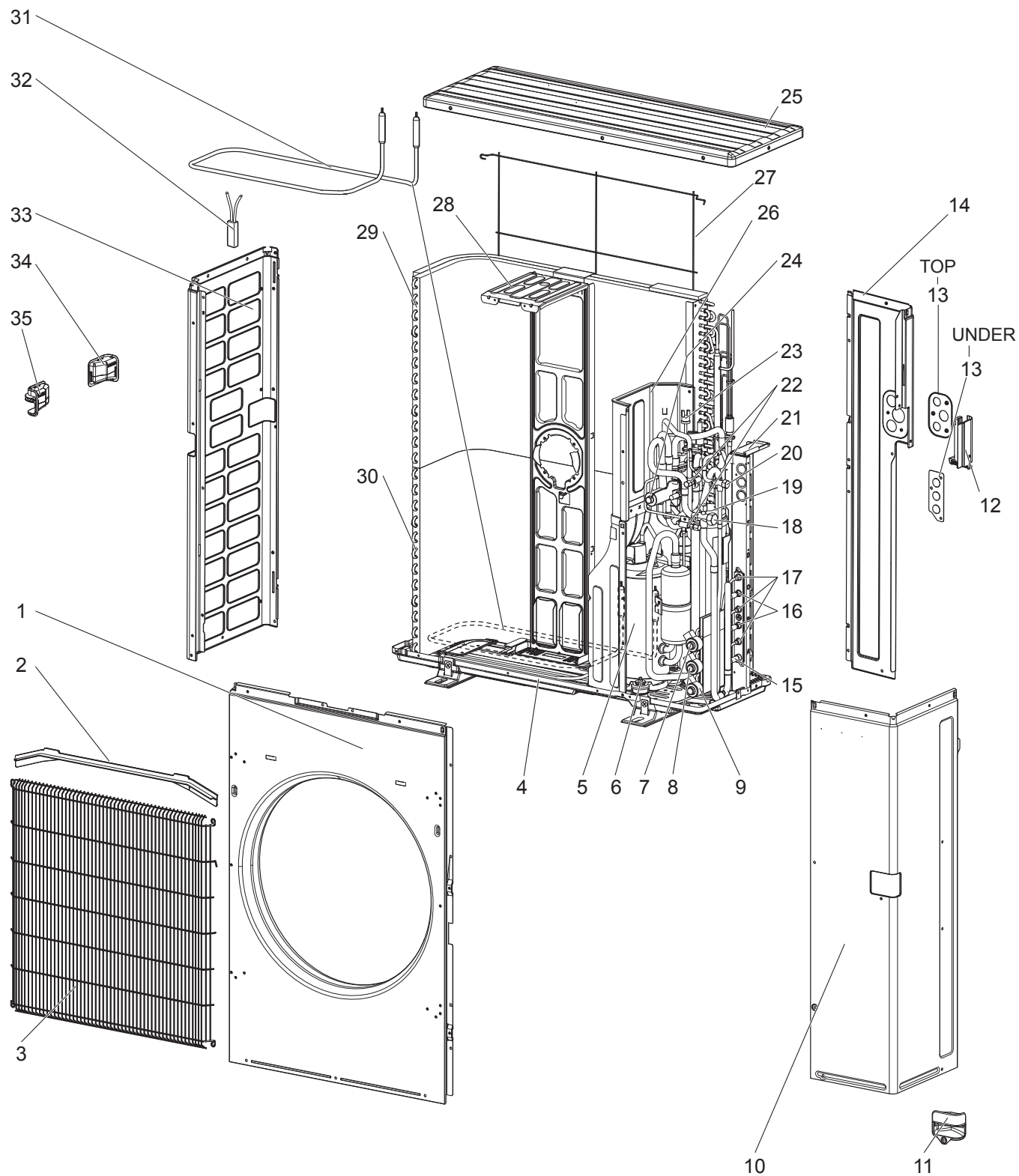
1. The part quantity below indicates the required number of pieces per unit.

No.	Part No.	Part Name	MXZ-3C24NAHZ	MXZ-3C30NAHZ	Symbol in Wiring Diagram	Remarks
1	E27 A15 508	PROPELLER FAN NUT	1	1		
2	E22 N99 501	PROPELLER FAN	1	1		
3	E22 R55 301	OUTDOOR FAN MOTOR	1	1	MF	SIC-81FW-D888-□
4	E22 90H 450	OUTDOOR CONTROL P.C. BOARD	1			
4	E22 91H 450	OUTDOOR CONTROL P.C. BOARD		1		
5	E22 P01 490	2-WAY VALVE SOLENOID COIL	1	1	21S2	
6	E22 N99 490	R.V. COIL	1	1	21S4	
7	E22 C92 375	TERMINAL BLOCK	3	3	TB2,3,4	Indoor unit connecting
8	E22 N99 374	TERMINAL BLOCK	1	1	TB1	Power supply
9	E22 N99 308	THERMISTOR SET	1	1	RT61,62,68	DEFROST, DISCHARGE, OUTDOOR HEAT EXCHANGER
10	E22 N99 309	AMBIENT TEMPERATURE THERMISTOR	1	1	RT65	
11	E22 N99 440	OUTDOOR POWER P.C. BOARD	1	1		Includes heat sink and RT64
12	E22 N99 337	REACTOR	2	2	L1,L2	

MXZ-3C24NAHZ2 MXZ-3C30NAHZ2

MXZ-3C24NAHZ3 MXZ-3C30NAHZ3

1-17. OUTDOOR UNIT STRUCTURAL PARTS AND FUNCTIONAL PARTS



1-17. OUTDOOR UNIT STRUCTURAL PARTS AND FUNCTIONAL PARTS

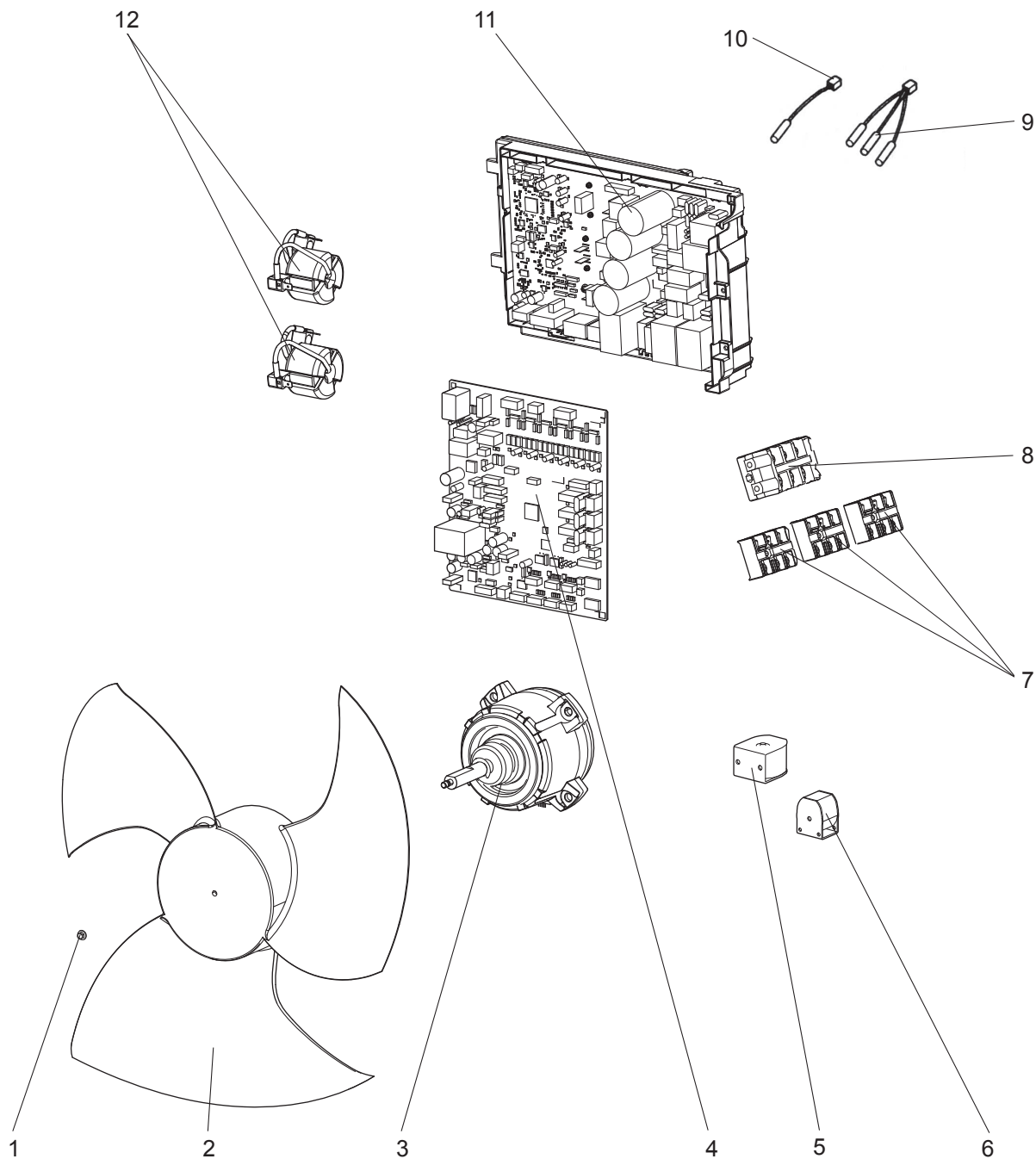
1. The part quantity below indicates the required number of pieces per unit.
2. The circled No. indicates that the part is not shown in the figure.

No.	Part No.	Part Name	MXZ-3C24NAHZ2 - [U]	MXZ-3C24NAHZ3 - [U]	MXZ-3C30NAHZ2 - [U]	MXZ-3C30NAHZ3 - [U]	Symbol in Wiring Diagram	Remarks
1	E22 N99 232	FRONT PANEL	1	1	1	1		
2	E27 A15 531	ICE GUARD	1	1	1	1		
3	E27 942 521	GRILLE	1	1	1	1		
4	E22 N99 290	BASE ASSEMBLY	1	1	1	1		
5	E22 N99 900	COMPRESSOR	1	1	1	1	MC	MNB33FBTMC-L
6	E22 267 506	COMPRESSOR RUBBER SET	3	3	3	3		3 RUBBERS SET
7	E22 N99 640	EXPANSION VALVE	1	1	1	1		C room
7	E22 P02 493	LEV COIL	1	1	1	1	LEV C	C room, Connector: BLUE
8	E22 N99 640	EXPANSION VALVE	1	1	1	1		B room
8	E22 P01 493	LEV COIL	1	1	1	1	LEV B	B room, Connector: RED
9	E22 N99 640	EXPANSION VALVE	1	1	1	1		A room
9	E22 N99 493	LEV COIL	1	1	1	1	LEV A	A room, Connector: WHITE
10	E22 N99 245	SERVICE PANEL	1		1			Without LABEL
10	E22 09T 245	SERVICE PANEL		1		1		Without LABEL
11	E22 P01 009	HANDLE	1	1	1	1		
12	E22 N99 009	HANDLE (BACK)	1	1	1	1		
13	E22 N99 978	CONDUIT PLATE (TOP)	1	1	1	1		
13	E22 P01 978	CONDUIT PLATE (UNDER)	1	1	1	1		
14	E22 N99 233	BACK PANEL	1	1	1	1		
15	E22 D37 666	UNION (GAS) (ø12.7)	1	1	1	1		ø1/2, A room
16	E22 D36 666	UNION (GAS) (ø9.52)	2	2	2	2		ø3/8, B, C room
17	E22 D36 667	UNION (LIQUID) (ø6.35)	3	3	3	3		ø1/4, A, B, C room
18	E22 N99 661	STOP VALVE (GAS) (ø15.88)	1	1	1	1		ø5/8
19	E22 N99 932	ACCUMULATOR	1	1	1	1		
20	E22 N99 662	STOP VALVE (LIQUID) (ø9.52)	1	1	1	1		ø3/8
21	E22 P01 814	BACK PILLAR	1	1	1	1		
22	E22 N99 641	SERVICE PORT	2	2	2	2		
23	E22 W66 646	HIGH PRESSURE SWITCH	1	1	1	1	HPS	4.41 MPa (45.0 kg/cm ²)
24	E22 N99 961	4-WAY VALVE	1		1			
24	E22 24R 961	4-WAY VALVE		1		1		
25	E22 N99 297	TOP PANEL	1		1			Without LABEL
25	E22 09T 297	TOP PANEL		1		1		Without LABEL
26	E22 N99 293	SEPARATOR	1	1	1	1		
27	E22 N99 523	REAR GUARD	1	1	1	1		
28	E22 N99 515	MOTOR SUPPORT	1	1	1	1		
29	E22 N99 630	OUTDOOR HEAT EXCHANGER (TOP)	1	1	1	1		Includes capillary tubes
30	E22 P01 630	OUTDOOR HEAT EXCHANGER (UNDER)	1	1	1	1		Includes capillary tubes
31	E22 N99 526	DEFROST HEATER	1		1		H	
31	E22 96E 526	DEFROST HEATER		1		1	H	
32	E22 N99 381	HEATER PROTECTOR	1	1	1	1	26H	
33	E22 N99 086	SIDE PANEL (L)	1	1	1	1		
34	E27 943 009	HANDLE (REAR)	1	1	1	1		
35	E27 942 009	HANDLE (FRONT)	1	1	1	1		
36	E22 N99 492	2-WAY SOLENOID VALVE	1	1	1	1		
37	E22 939 936	CAPILLARY TUBE (ø4.0 x ø2.8 x 100)	3	3	3	3		O.D. 0.16 x I.D. 0.11 x 3.94
38	E22 820 936	CAPILLARY TUBE (ø2.5 x ø0.6 x 1000)	1	1	1	1		O.D. 0.10 x I.D. 0.02 x 39.37

MXZ-3C24NAHZ2 MXZ-3C30NAHZ2

MXZ-3C24NAHZ3 MXZ-3C30NAHZ3

1-18. OUTDOOR UNIT FUNCTIONAL PARTS AND ELECTRICAL PARTS



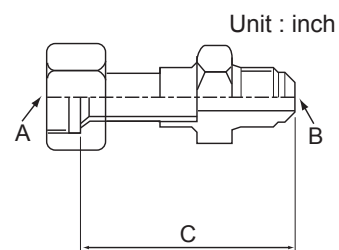
1-18. OUTDOOR UNIT FUNCTIONAL PARTS AND ELECTRICAL PARTS

1. The part quantity below indicates the required number of pieces per unit.

No.	Part No.	Part Name	MXZ-3C24NAHZ2 - U1	MXZ-3C24NAHZ3 - U1	MXZ-3C30NAHZ2 - U1	MXZ-3C30NAHZ3 - U1	Symbol in Wiring Diagram	Remarks
1	E27 A15 508	PROPELLER FAN NUT	1	1	1	1		
2	E22 N99 501	PROPELLER FAN	1	1	1	1		
3	E22 W69 301	OUTDOOR FAN MOTOR	1	1	1	1	MF	SIC-88FWJ-D888-□
4	E22 97E 450	OUTDOOR CONTROL P.C. BOARD	1					
4	E22 10T 450	OUTDOOR CONTROL P.C. BOARD		1				
4	E22 98E 450	OUTDOOR CONTROL P.C. BOARD			1			
4	E22 11T 450	OUTDOOR CONTROL P.C. BOARD				1		
5	E22 P01 490	2-WAY VALVE SOLENOID COIL	1	1	1	1	21S2	
6	E22 N99 490	R.V. COIL	1	1	1	1	21S4	
7	E22 C92 375	TERMINAL BLOCK	3	3	3	3	TB2,3,4	Indoor unit connecting
8	E22 N99 374	TERMINAL BLOCK	1	1	1	1	TB1	Power supply
9	E22 N99 308	THERMISTOR SET	1		1		RT61,62,68	DEFROST, DISCHARGE, OUTDOOR HEAT EXCHANGER
9	E22 Y96 308	THERMISTOR SET		1		1	RT61,62,68	DEFROST, DISCHARGE, OUTDOOR HEAT EXCHANGER
10	E22 N99 309	AMBIENT TEMPERATURE THERMISTOR	1	1	1	1	RT65	
11	E22 R55 440	OUTDOOR POWER P.C. BOARD	1		1			Includes heat sink and RT64
11	E22 18B 440	OUTDOOR POWER P.C. BOARD		1		1		Includes heat sink and RT64
12	E22 N99 337	REACTOR	2	2	2	2	L1,L2	

2-1. DIFFERENT-DIAMETER PIPE

Applied unit	Model name	Connected pipes diameter	Diameter A	Diameter B	Length C
MXZ-2C20NA2 MXZ-2C20NA3 MXZ-3C24NA MXZ-3C24NA2 MXZ-3C24NA3 MXZ-3C30NA MXZ-3C30NA2 MXZ-3C30NA3 MXZ-4C36NA MXZ-4C36NA2 MXZ-4C36NA3 MXZ-5C42NA MXZ-5C42NA2 MXZ-5C42NA3	MAC-A454JP-E	ø3/8 — ø1/2	ø3/8	ø1/2	2.72
MXZ-2C20NAH2 MXZ-2C20NAH3 MXZ-3C24NAH2 MXZ-3C24NAH3 MXZ-3C30NAH2 MXZ-3C30NAH3	MAC-A455JP-E	ø1/2 — ø3/8	ø1/2	ø3/8	2.56
MXZ-2C20NAH2 MXZ-2C20NAH3 MXZ-3C24NAH2 MXZ-3C24NAH3 MXZ-3C30NAH2 MXZ-3C30NAH3	MAC-A456JP-E	ø1/2 — ø5/8	ø1/2	ø5/8	2.62
MXZ-2C20NAH2 MXZ-2C20NAH3 MXZ-3C24NAH2 MXZ-3C24NAH3 MXZ-3C30NAH2 MXZ-3C30NAH3	PAC-493PI	ø1/4 — ø3/8	ø1/4	ø3/8	2.38
MXZ-2C20NAH2 MXZ-2C20NAH3 MXZ-3C24NAH2 MXZ-3C24NAH3 MXZ-3C30NAH2 MXZ-3C30NAH3	PAC-SG76RJ-E	ø3/8 — ø5/8	ø3/8	ø5/8	4.00

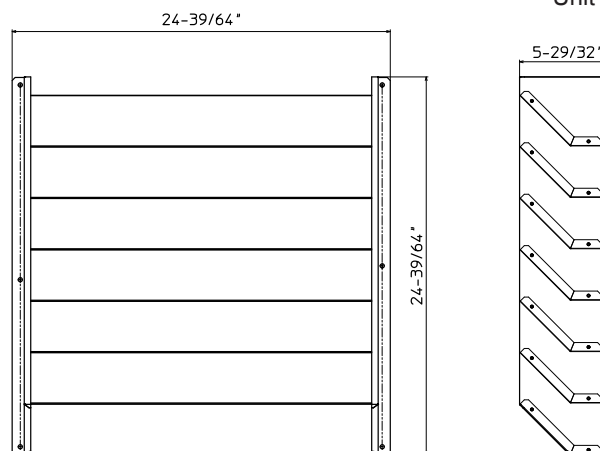


2-2. OUTLET GUIDE

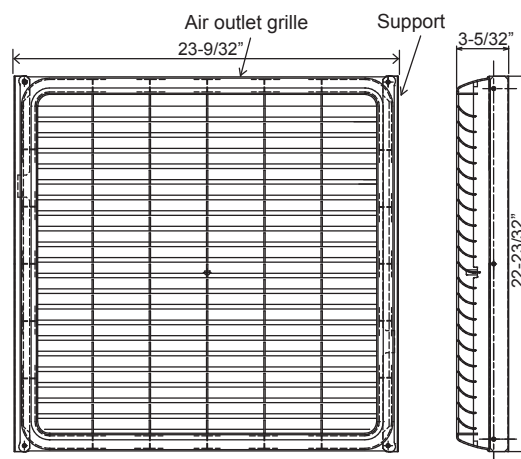
Changes air discharge direction.

Applied unit		Model name
MXZ-3C24NA	MXZ-2C20NAHZ	PAC-SH96SG-E
MXZ-3C24NA2	MXZ-2C20NAHZ2	
MXZ-3C24NA3	MXZ-2C20NAHZ3	
MXZ-3C30NA	MXZ-3C24NAHZ	
MXZ-3C30NA2	MXZ-3C24NAHZ2	
MXZ-3C30NA3	MXZ-3C24NAHZ3	
MXZ-4C36NA	MXZ-3C30NAHZ	
MXZ-4C36NA2	MXZ-3C30NAHZ2	
MXZ-4C36NA3	MXZ-3C30NAHZ3	
MXZ-5C42NA		
MXZ-5C42NA2		
MXZ-5C42NA3		
MXZ-2C20NA2	MXZ-2C20NA3	MAC-856SG

Unit : inch



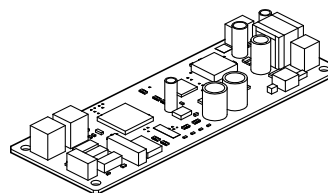
PAC-SH96SG-E



MAC-856SG

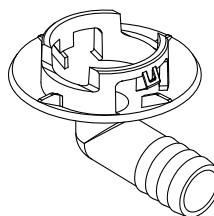
2-3. M-NET ADAPTER

Applied unit		Model name
MXZ-2C20NA2	MXZ-2C20NAHZ	PAC-IF01MNT-E
MXZ-2C20NA3	MXZ-2C20NAHZ2	
MXZ-3C24NA	MXZ-2C20NAHZ3	
MXZ-3C24NA2	MXZ-3C24NAHZ	
MXZ-3C24NA3	MXZ-3C24NAHZ2	
MXZ-3C30NA	MXZ-3C24NAHZ3	
MXZ-3C30NA2	MXZ-3C30NAHZ	
MXZ-3C30NA3	MXZ-3C30NAHZ2	
MXZ-4C36NA	MXZ-3C30NAHZ3	
MXZ-4C36NA2		
MXZ-4C36NA3		
MXZ-5C42NA		
MXZ-5C42NA2		
MXZ-5C42NA3		



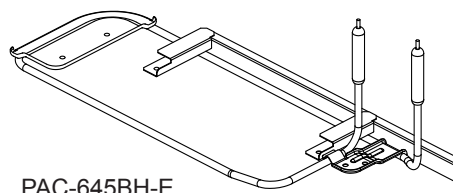
2-4. DRAIN SOCKET

Applied unit		Model name
MXZ-3C24NA	MXZ-4C36NA	PAC-SG60DS-E
MXZ-3C24NA2	MXZ-4C36NA2	
MXZ-3C24NA3	MXZ-4C36NA3	
MXZ-3C30NA	MXZ-5C42NA	
MXZ-3C30NA2	MXZ-5C42NA2	
MXZ-3C30NA3	MXZ-5C42NA3	

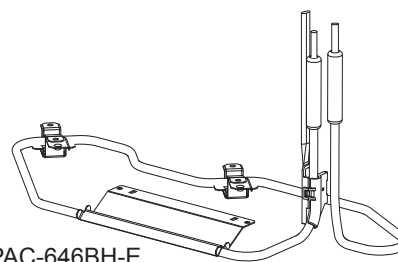


2-5. BASE HEATER

Applied unit		Model name
MXZ-3C24NA	MXZ-4C36NA	PAC-645BH-E
MXZ-3C24NA2	MXZ-4C36NA2	
MXZ-3C24NA3	MXZ-4C36NA3	
MXZ-3C30NA	MXZ-5C42NA	
MXZ-3C30NA2	MXZ-5C42NA2	
MXZ-3C30NA3	MXZ-5C42NA3	
MXZ-2C20NA2	MXZ-2C20NA3	PAC-646BH-E



PAC-645BH-E



PAC-646BH-E

Components

①	Base heater	1	④	Base heater support (2)	1	⑦	Cable tie	2
②	Heater guard	1	⑤	Clamp	1	⑧	Fastener	2
③	Base heater support (1)	1	⑥	Screw	8	⑨	Spec label	1

MITSUBISHI ELECTRIC CORPORATION

HEAD OFFICE: TOKYO BUILDING, 2-7-3, MARUNOUCHI, CHIYODA-KU, TOKYO 100-8310, JAPAN

© Copyright 2014 MITSUBISHI ELECTRIC CORPORATION

Issued: Dec. 2021. No. OBB702 REVISED EDITION-G

Issued: Jul. 2021. No. OBB702 REVISED EDITION-F

Issued: Aug. 2020. No. OBB702 REVISED EDITION-E

Issued: Apr. 2017. No. OBB702 REVISED EDITION-D

Issued: Feb. 2016. No. OBB702 REVISED EDITION-C

Issued: Nov. 2014. No. OBB702 REVISED EDITION-B

Issued: Oct. 2014. No. OBB702 REVISED EDITION-A

Published: Sep. 2014. No. OBB702

Made in Japan

Specifications are subject to change without notice.