

AMST Air Handler

AMST24BU1400AA

AMST30BU1400AA

AMST36BU1400AA

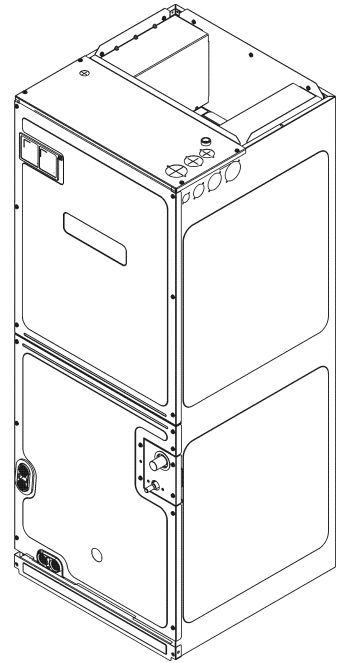
AMST36CU1400AA

AMST42CU1400AA

AMST48CU1400AA

AMST48DU1400AA

AMST60DU1400AA



Amana® is a registered trademark of Maytag Corporation or its related companies and is used under license. All rights reserved.

This manual is to be used by qualified technicians only.

Important Information

Index

Functional Parts List	3
Illustration and Parts	4 - 9

Views shown are for parts illustrations only, not servicing procedures.

Text Codes:

AR - As Required

NA - Not Available

NS - Not Shown

00000000 - See Note

QTY - Quantity Example (QTY 3) (If Quantity not shown, Quantity = 1)

M - Model Example (M1) (If M Code not shown, then part is used on all Models)

Expanded Model Nomenclature:

Example M1 - Model#1 M2 - Model#2 M3 - Model#3

Goodman Company, L.P. is not responsible for personal injury or property damage resulting from improper service. Review all service information before beginning repairs.

Warranty service must be performed by an authorized technician, using authorized factory parts. If service is required after the warranty expires, Goodman Company, L.P. also recommends contacting an authorized technician and using authorized factory parts.

Goodman Company, L.P. reserves the right to discontinue, or change at any time, specifications or designs without notice or without incurring obligations.

For assistance within the U.S.A. contact:

Homeowner Support
Goodman Company, L.P.
19001 Kermier Road
Waller, Texas 77484
877-254-4729-Telephone
713-863-2382-Facsimile

For assistance outside the U.S.A. contact:

International Division
Goodman Company, L.P.
19001 Kermier Road
Waller, Texas 77484
713-861-2500-Telephone
713-863-2382-Facsimile

Functional Parts

Part

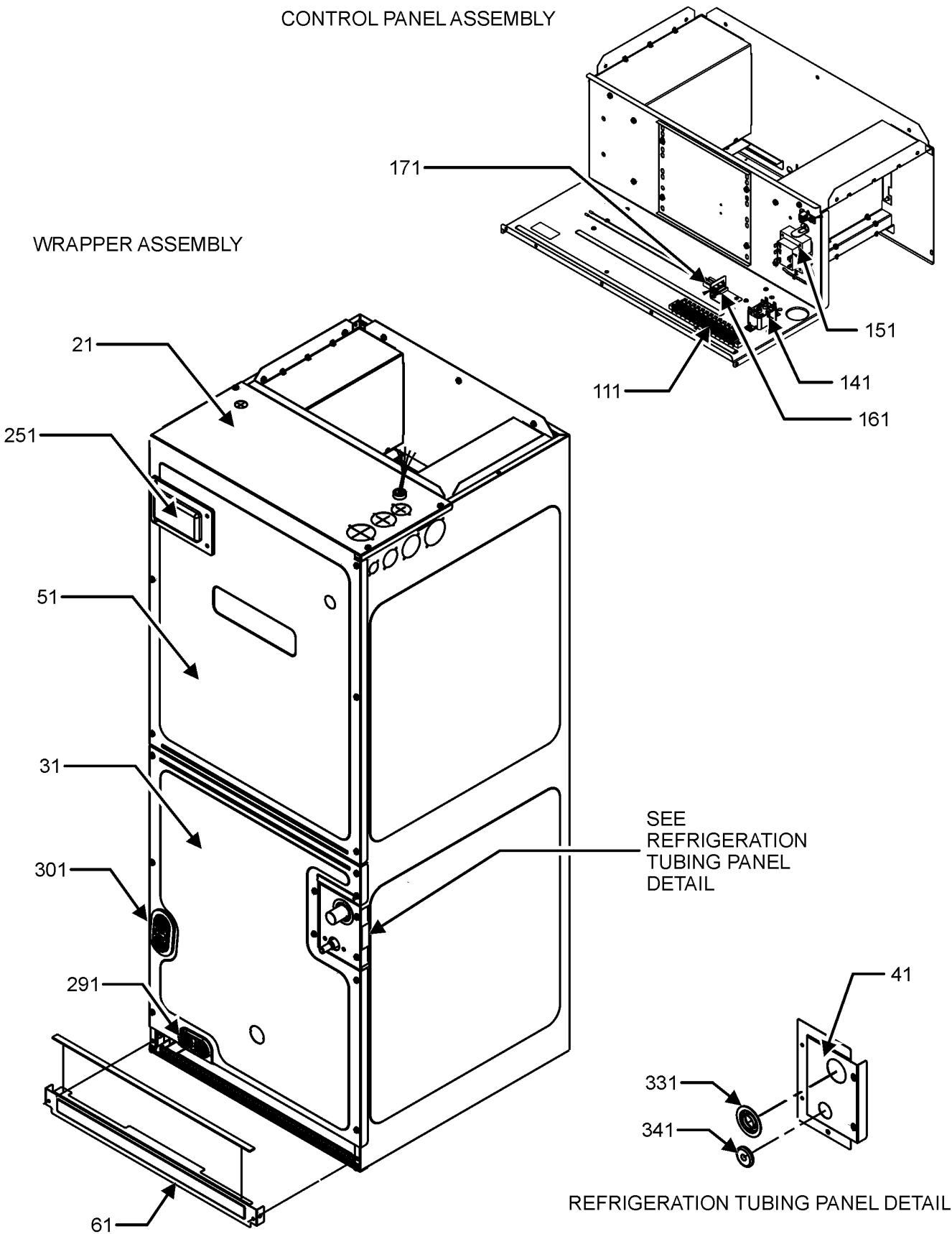
No: Description:

0131M00999	MOTOR 1 HP MOTOR PROGRAMMED (M8)
0131M00998	MOTOR 1 HP MOTOR PROGRAMMED (M7)
0131M00997	MOTOR 3/4 HP MOTOR PROGRAMMED (M6)
0131M00996	MOTOR 3/4 HP MOTOR PROGRAMMED (M5)
0131M00995	MOTOR 3/4 HP MOTOR PROGRAMMED (M4)
0131M00993	MOTOR 3/4 HP MOTOR PROGRAMMED (M2, M3)
0131M00992	MOTOR 3/4 HP MOTOR PROGRAMMED (M1)
0130M00129	RELAY, WCK (M1, M2, M3, M4, M5, M6, M7)
0130M00138	TRANSFORMER, 208/230, 24V
0151R00209	TXV-FX-2T-ADJ VALVE (M1)
0151R00210	TXV-FX-3T-ADJ VALVE (M2, M3, M4)
0151R00235	TXV-FX-5T-ADJ VALVE SET 101.5 (M7, M8)
0151R00234	TXV-FX-5T-ADJ VALVE SET105.1 (M6)
0151R00233	TXV-FX-5T-ADJ VALVE SET107 (M5)

Expanded Model Nomenclature

M1 - AMST24BU1400AA
M2 - AMST30BU1400AA
M3 - AMST36BU1400AA
M4 - AMST36CU1400AA
M5 - AMST42CU1400AA
M6 - AMST48CU1400AA
M7 - AMST48DU1400AA
M8 - AMST60DU1400AA

Cabinet and Control Box Assembly



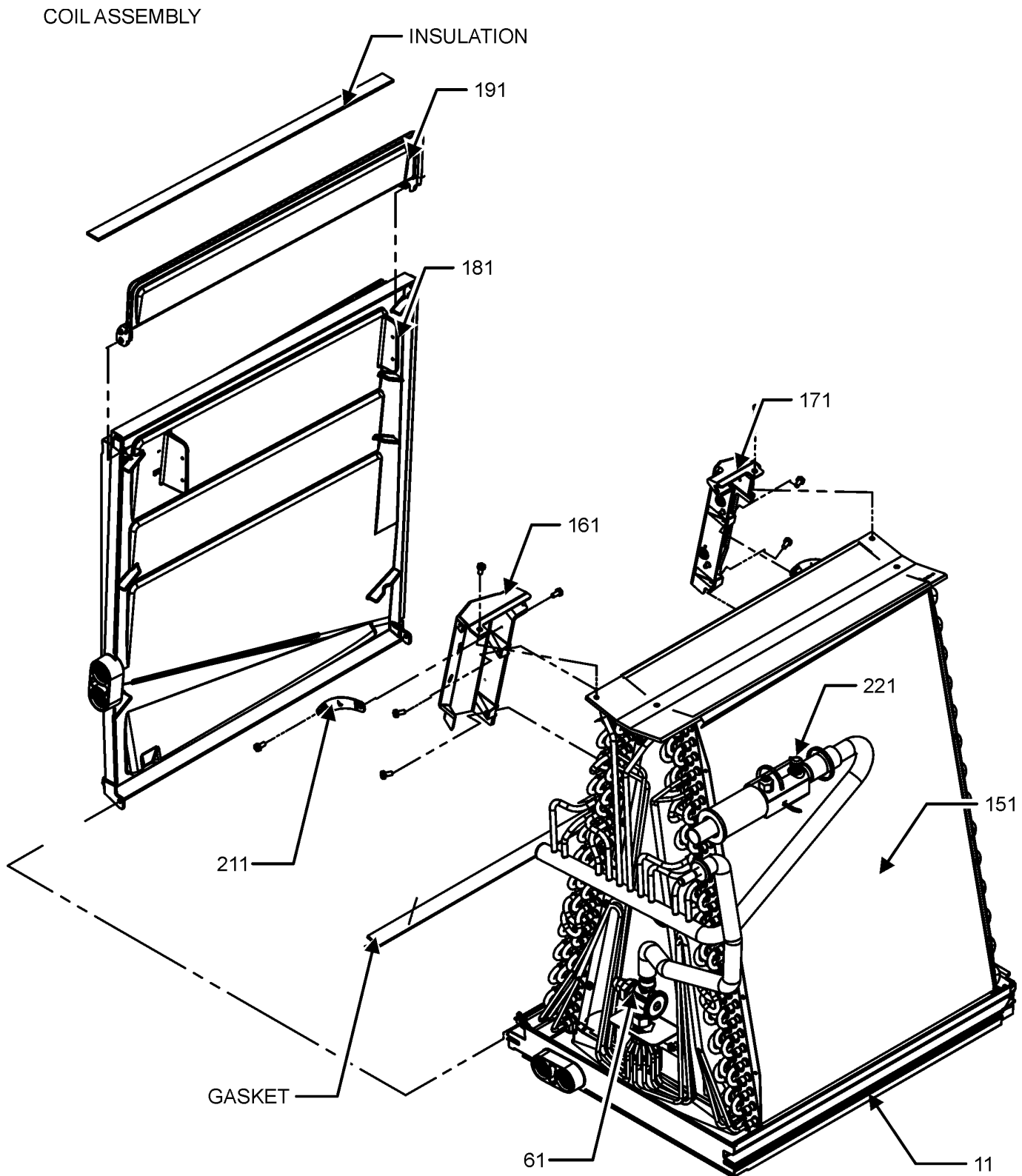
Cabinet and Control Box Assembly

Ref. Part No: No:	Description:	Ref. Part No: No:	Description:
Image 1:			
21	0121A01483PDG		PLATE, UPPER TIE, PAINTED (M1, M2, M3)
21	0121A01484PDG		PLATE, UPPER TIE, PAINTED (M4, M5, M6)
21	0121A01485PDG		PLATE, UPPER TIE, PAINTED (M7, M8)
31	0121A00460PDG		LOWER ACCESS PANEL (M7)
31	0121A00618PDG		LOWER ACCESS PANEL (M8)
31	0121A01470PDG		LOWER ACCESS PANEL, PAINTED (M1)
31	0121A01473PDG		LOWER ACCESS PANEL, PAINTED (M2, M3)
31	0121A01474PDG		LOWER ACCESS PANEL, PAINTED (M4)
31	0121A01477PDG		LOWER ACCESS PANEL, PAINTED (M5)
31	0121A01478PDG		LOWER ACCESS PANEL, PAINTED (M6)
41	0121A00658PDG		REFRIGERATION TUBING PANEL
51	0121A00833PDG		PANEL, UPPER ACCESS (M7, M8)
51	0121A00834PDG		PANEL, UPPER ACCESS (M5, M6)
51	0121A00834PDG		PANEL, UPPER ACCESS (M5, M6)
61	0121A00242PDG		Panel, Filter Access, Ptd (M1, M2, M3)
61	0121A00243PDG		Panel, Filter Access, Ptd (M4, M5, M6)
61	0121A00244PDG		Panel, Filter Access, Ptd (M7, M8)
111	0130M00020		TERMINAL BOARD
141	0130M00129		RELAY, WCK (M1, M2, M3, M4, M5, M6, M7)
151	0130M00138		TRANSFORMER, 208/230, 24V
161	0130M00277		FUSE HOLDER
171	0121A00811		BRACKET
251	0161A00073		CIRCUIT BREAKER COVER
291	0154A00006BL		Gasket, Drain Pan (M6, M7, M8)
291	0154A00047		GASKET, DRAIN PAN (M1, M2, M3, M4, M5)
301	0154A00007BL		Gasket, Drain Pan
331	B1392630		GROMMET (M2, M3, M4, M5, M6, M7, M8)
341	0164A00002		GROMMET
NS	0159A00004		SPIDER WIRE HARNESS (M1, M2, M3, M4, M5, M6, M7)
NS	0159A00005		SPIDER WIRE HARNESS (M8)
NS	0163A00026		THUMB SCREW (QTY 2)
NS	BT1392909		WASHER; SS RETAINING (QTY 2)
NS	0259A00012P		WIRE ASSY, 9 PIN FEMALE CONN.
NS	0259A00015P		WIRE ASSY, 9 PIN MALE CONN.

Expanded Model Nomenclature

M1 - AMST24BU1400AA
M2 - AMST30BU1400AA
M3 - AMST36BU1400AA
M4 - AMST36CU1400AA
M5 - AMST42CU1400AA
M6 - AMST48CU1400AA
M7 - AMST48DU1400AA
M8 - AMST60DU1400AA

Coil Assembly



COIL ASSEMBLY MAY DIFFER FROM WHAT IS SHOWN

Coil Assembly

Ref. Part No: No:	Description:	Ref. Part No: No:	Description:
Image 1:			
11	0161A00122		DRAIN PAN MAIN, E COIL (M1, M2, M3)
11	0161A00123		DRAIN PAN MAIN, E COIL (M4, M5)
11	0161A00051		DRAINPAN, VERTICAL (M7, M8)
11	0161A00052		DRAINPAN, VERTICAL (M6)
61	0151R00209		TXV-FX-2T-ADJ VALVE (M1)
61	0151R00210		TXV-FX-3T-ADJ VALVE (M2, M3, M4)
61	0151R00235		TXV-FX-5T-ADJ VALVE SET 101.5 (M7, M8)
61	0151R00234		TXV-FX-5T-ADJ VALVE SET105.1 (M6)
61	0151R00233		TXV-FX-5T-ADJ VALVE SET107 (M5)
151	0270A01690		COIL TUBING ASSEMBLY (M2)
151	0270A01671		TUBING ASSY, EVAP COIL (M6)
151	0270A01676		TUBING ASSY, EVAP COIL (M1)
151	0270A01677		TUBING ASSY, EVAP COIL (M4)
151	0270A01678		TUBING ASSY, EVAP COIL (M3)
151	0270A01679		TUBING ASSY, EVAP COIL (M5)
151	0270A01682		TUBING ASSY, EVAP COIL (M7)
151	0270A01683		TUBING ASSY, EVAP COIL (M8)
161	0161A00157		CONDENSATE COLLECTOR, FRONT (M1, M2, M3, M4, M5)
161	0161A00060		CONDENSATE, COLLECT, FRONT (M6, M7, M8)
171	0161A00158		CONDENSATE COLLECTOR, BACK (M1, M2, M3, M4, M5)
171	0161A00061		CONDENSATE, COLLECT, BACK (M6, M7, M8)
181	0161A00053		DRAIN PAN HORIZONTAL, TALL (M6, M7, M8)
181	0161A00152		DRAIN PAN, SIDE (M1, M4)
181	0161A00153		DRAIN PAN, SIDE (M2, M3, M5)
191	0161A00155		DRAIN PAN EXT, E COIL (M2, M3, M5)
191	0161A00156		DRAIN PAN EXT, E COIL (M4)
191	0161A00054		DRAIN PAN, EXTENSION, SMALL (M7)
191	0161A00056		DRAIN PAN, EXTENSION, TALL (M6, M8)
211	0121A00633		Bracket, Drip Shield (M6)
211	0121A00634		Bracket, Drip Shield (M7, M8)
211	0121D00882		BRKT, 2"-C (M2, M3, M5)
211	0121D00883		BRKT, 4"-C (M4)
211	0121D00929		BRKT, C (M1)
221	0163M00175		CAP WITH O-RING
NS	BT1369063		90 DEGREE STUB
NS	0151M00104		VALVE CORE

Expanded Model Nomenclature

M1 - AMST24BU1400AA M2 - AMST30BU1400AA M3 - AMST36BU1400AA M4 - AMST36CU1400AA M5 - AMST42CU1400AA M6 - AMST48CU1400AA M7 - AMST48DU1400AA M8 - AMST60DU1400AA
--

BLOWER ASSEMBLY



Blower Assembly

Ref. Part No: No:	Description:	Ref. Part No: No:	Description:
Image 1:			
21	0131M00998		MOTOR 1 HP MOTOR PROGRAMMED (M7)
21	0131M00999		MOTOR 1 HP MOTOR PROGRAMMED (M8)
21	0131M00992		MOTOR 3/4 HP MOTOR PROGRAMMED (M1)
21	0131M00993		MOTOR 3/4 HP MOTOR PROGRAMMED (M2, M3)
21	0131M00995		MOTOR 3/4 HP MOTOR PROGRAMMED (M4)
21	0131M00996		MOTOR 3/4 HP MOTOR PROGRAMMED (M5)
21	0131M00997		MOTOR 3/4 HP MOTOR PROGRAMMED (M6)
41	B1392918		WASHER, FLAT 1/4 ID X 1 OD (QTY 3)
51	M0250565		SCREW-TC 1.25" (QTY 3)
111	0271A00206		BLOWER SHELL ASSY (M8)
111	0271A00497		BLOWER SHELL ASSY (M1, M2, M3)
111	0271A00498		BLOWER SHELL ASSY (M4, M5)
111	0271A00499		BLOWER SHELL ASSY (M6, M7)
131	0121M00039		MOTOR MOUNT BAND (HEAVY DUTY)
141	0163M00537		MOTOR MOUNT ARM (M1, M2, M3, M4, M5, M6, M7)
141	0163M00538		MOUNT ARM, MOTOR (M8)
161	B1393800		LOCKNUT, NYLON, INSERT 1/4,20
171	0163M00320		HEX HEAD ALL THREAD TAP BOLT
NS	0163M00003P		SCREW #10 X 1/2 A SLOT SR BLK
NS	0230M00004		X-13 LOW VOLTAGE WIRE HARNESS
NS	0230M00002		X-13 POWER HARNESS

Expanded Model Nomenclature

M1 - AMST24BU1400AA
M2 - AMST30BU1400AA
M3 - AMST36BU1400AA
M4 - AMST36CU1400AA
M5 - AMST42CU1400AA
M6 - AMST48CU1400AA
M7 - AMST48DU1400AA
M8 - AMST60DU1400AA