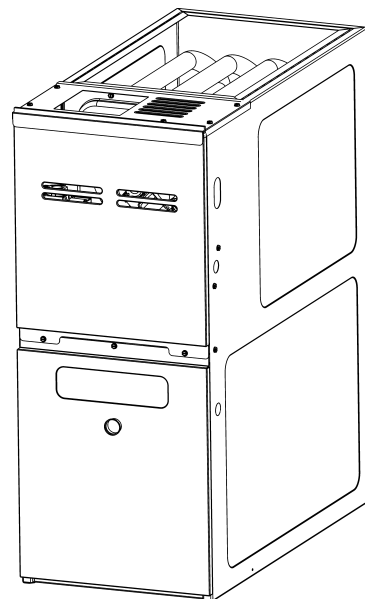




REPAIR PARTS

GC9C 80% Two Stage 9 Speed ECM Motor Furnace

GC9C800403AXAA
GC9C800603AXAA
GC9C800603BXAA
GC9C800804BXAA
GC9C800805CXAA
GC9C801005CXAA



This manual is to be used by qualified technicians only.

© 2021 Goodman Manufacturing Company, L.P. ♦ 5151 San Felipe St, Suite 500 ♦ Houston, TX 77056

Important Information

Index

Functional Parts List	3
Illustration and Parts	4 - 9

Views shown are for parts illustrations only, not servicing procedures.

Text Codes:

AR - As Required

NA - Not Available

NS - Not Shown

00000000 - See Note

QTY - Quantity Example (QTY 3) (If Quantity not shown, Quantity = 1)

M - Model Example (M1) (If M Code not shown, then part is used on all Models)

Expanded Model Nomenclature:

Example M1 - Model#1 M2 - Model#2 M3 - Model#3

Goodman Manufacturing Company, L.P. is not responsible for personal injury or property damage resulting from improper service. Review all service information before beginning repairs.

Warranty service must be performed by an authorized technician, using authorized factory parts. If service is required after the warranty expires, Goodman Manufacturing Company, L.P. also recommends contacting an authorized technician and using authorized factory parts.

Goodman Manufacturing Company, L.P. reserves the right to discontinue, or change at any time, specifications or designs without notice or without incurring obligations.

For assistance within the U.S.A. contact:

Homeowner Support

Goodman Manufacturing Company, L.P.

19001 Kermier Road

Waller, Texas 77484

877-254-4729-Telephone

713-863-2382-Facsimile

For assistance outside the U.S.A. contact:

International Division

Goodman Manufacturing Company, L.P.

19001 Kermier Road

Waller, Texas 77484

713-861-2500-Telephone

713-863-2382-Facsimile

Functional Parts

Part

No: Description:

0130F00792	AIR PRESSURE SWITCH (M5, M6)
0130F00795	AIR PRESSURE SWITCH (M1, M2)
0130F00791	AIR PRESSURE SWITCH (M3, M4)
PCBBF164	CIRCUIT BOARD, FURNACE
0130F00010	FLAME SENSOR
0151M00027	GAS VALVE
10690402	INTERLOCK SWITCH
0130F00071	LIMIT SWITCH (M3)
0130F00038	LIMIT, PRIMARY 120 LT BLUE
0130F00067	LIMIT-RED (M5, M6)
10123529	MANUAL RESET R.O.S. LIMIT
0131F00191	MOTOR PROGRAMMED (M4)
0131F00188	MOTOR PROGRAMMED (M1)
0131F00190	MOTOR PROGRAMMED (M3)
0131F00192	MOTOR PROGRAMMED (M5)
0131F00193	MOTOR PROGRAMMED (M6)
0131F00189	MOTOR PROGRAMMED (M2)
0131M00781P	MOTOR, VENT 2-STAGE
0130F00036	PRIMARY LIMIT - PINK 180° (M1, M2, M4)
0130F00008	SINI IGNITOR
0130M00140	TRANSFORMER,(120V TO 24V,40VA,

SPECIAL PARTS

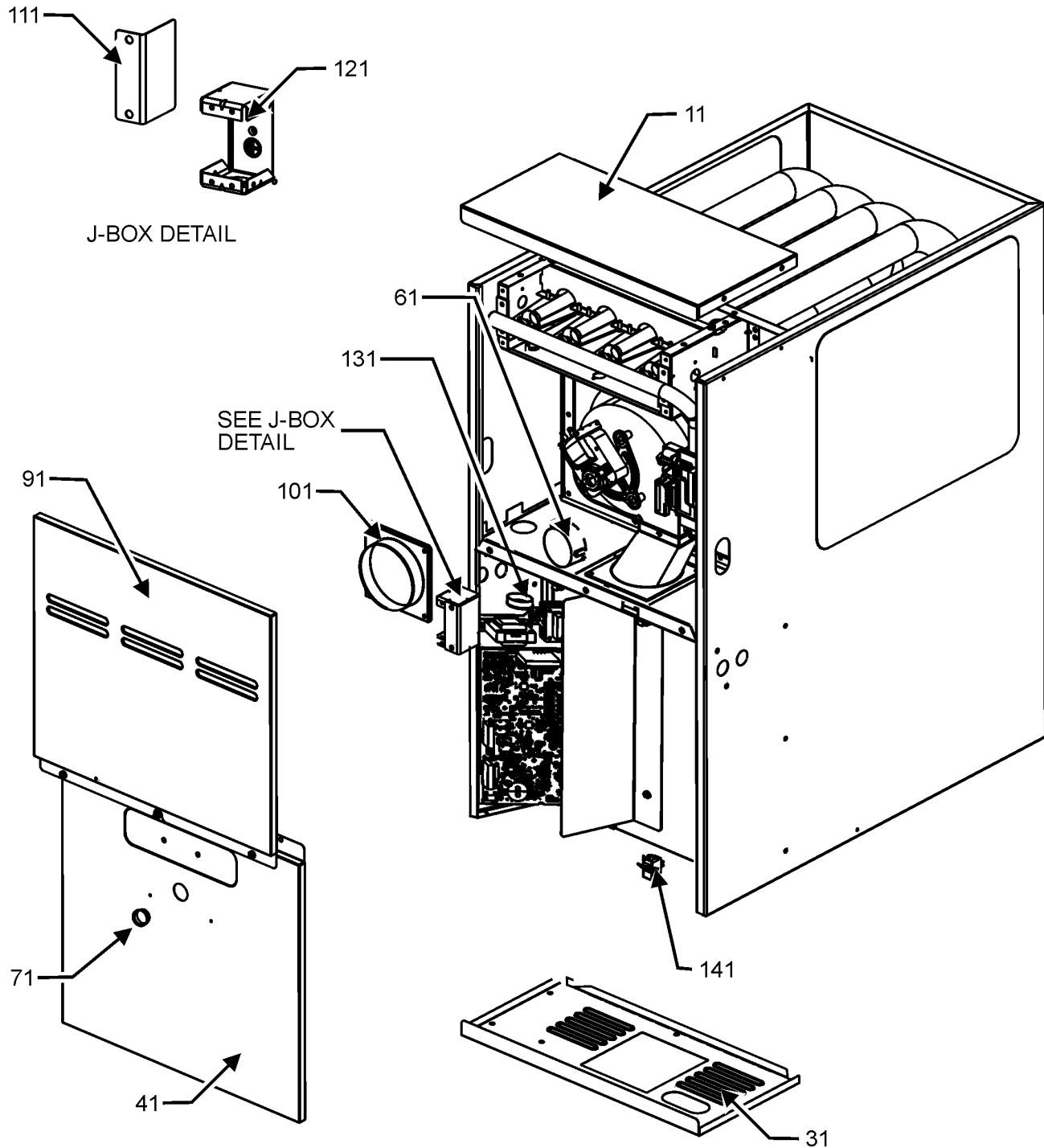
HI-130	HOMEOWNERS INSTRUCTIONS
IOG-2026	INSTALLATION INSTRUCTIONS
0161F00007	NAMEPLATE, GOODMAN
PWCFURNUQNT	WARRANTY, PRODUCT

Expanded Model Nomenclature

M1 - GC9C800403AXAA
M2 - GC9C800603AXAA
M3 - GC9C800603BXAA
M4 - GC9C800804BXAA
M5 - GC9C800805CXAA
M6 - GC9C801005CXAA

Cabinet Assembly

CABINET ASSEMBLY



NOTE: CABINET ASSEMBLY MAY DIFFER FROM WHAT IS SHOWN

Cabinet Assembly

Ref. Part No: No:	Description:	Ref. Part No: No:	Description:
----------------------	--------------	----------------------	--------------

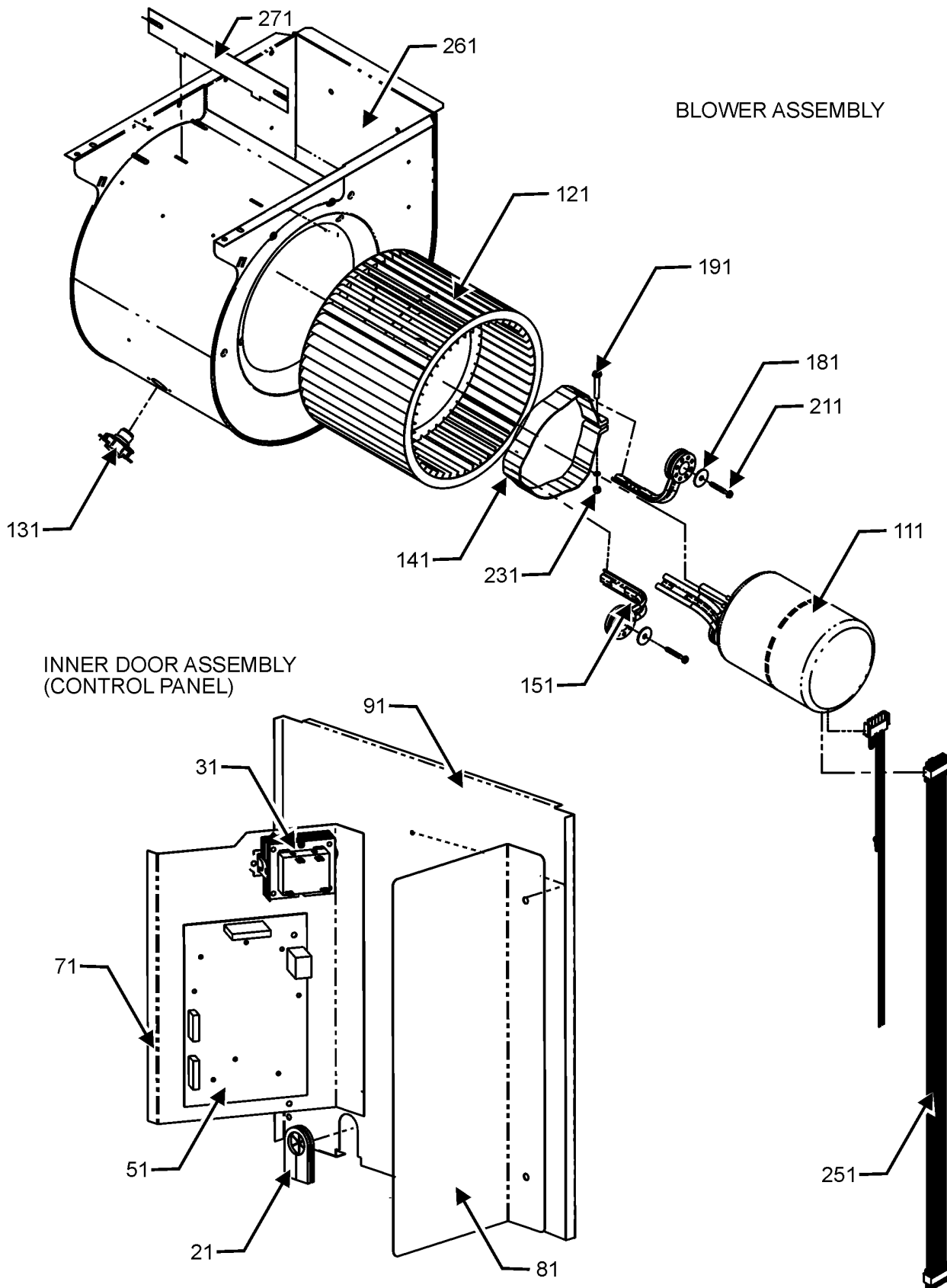
Image 1:

11	0121F00183DG	PAINTED 14" FURNACE BOTTOM (M1, M2)
11	0121F00190DG	PAINTED 17.5" FURNACE BOTTOM (M3, M4)
11	0121F00191DG	PAINTED 21" FURNACE BOTTOM (M5, M6)
31	0121F00141DG	TOP, FURNACE 14"-PAINTED (M1, M2)
31	0121F00142DG	TOP, FURNACE 17.5"-PAINTED (M3, M4)
31	0121F00143DG	TOP, FURNACE 21"-PAINTED (M5, M6)
61	0130F00791	AIR PRESSURE SWITCH (M3, M4)
61	0130F00792	AIR PRESSURE SWITCH (M5, M6)
61	0130F00795	AIR PRESSURE SWITCH (M1, M2)
71	B1392139	VIEW PORT BUSHING-BLOWER DOOR
91	0121F00118DG	DOOR CTRL ACCESS, 14"-PAINTED (M1, M2)
91	0121F00120DG	DOOR CTRL ACCESS, 21"-PAINTED (M5, M6)
91	0121F00119DG	DOOR CTRL ACCESS, 17.5"-PAINTED (M3, M4)
91	0121F00227	DOOR, INNER 17.5" (M3, M4)
91	0121F00228	DOOR, INNER 21" (M5, M6)
101	4023500	CHIMNEY TRANSITION TOP
111	4015502	J-BOX COVER
121	4014502	J-BOX
131	0163F00001	UNIVERSAL BUSHING WITH SLICE (M1, M2)
131	B1392147	UNIVERSAL BUSHING WITH SLICE (M3, M4, M5, M6)
141	10690402	INTERLOCK SWITCH
NS	HI-130	HOMEOWNERS INSTRUCTIONS
NS	IOG-2026	INSTALLATION INSTRUCTIONS
NS	0161F00007	NAMEPLATE, GOODMAN
NS	PWCFURNUQNT	WARRANTY, PRODUCT

Expanded Model Nomenclature

M1 - GC9C800403AXAA
M2 - GC9C800603AXAA
M3 - GC9C800603BXAA
M4 - GC9C800804BXAA
M5 - GC9C800805CXAA
M6 - GC9C801005CXAA

Blower and Control Panel Assembly



Blower and Control Panel Assembly

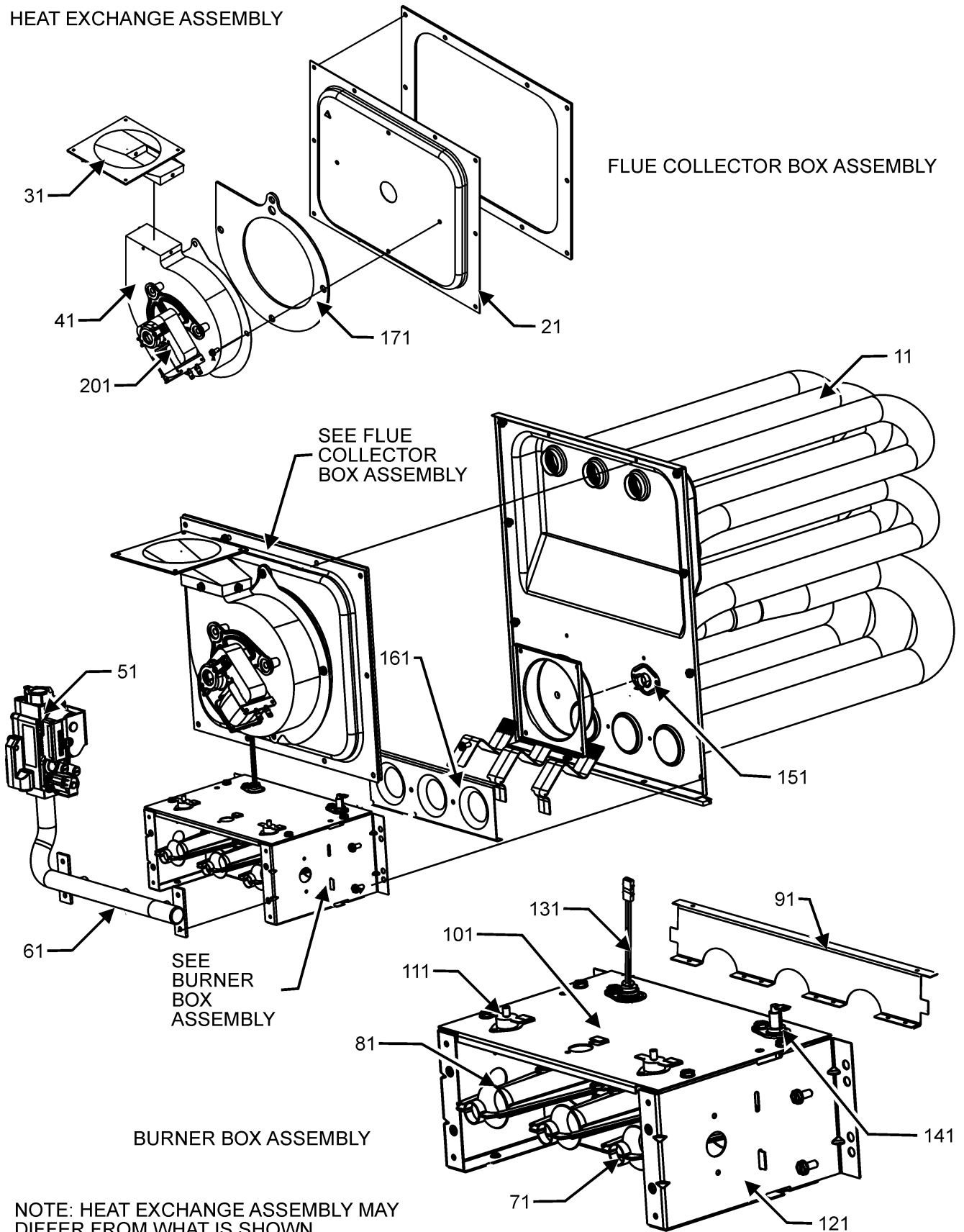
Ref. Part No: No:	Description:	Ref. Part No: No:	Description:
Image 1:			
21	20477501		GROMMET-HORSESHOE
31	0130M00140		TRANSFORMER,(120V TO 24V,40VA,
51	PCBBF164		CIRCUIT BOARD, FURNACE
71	0121F00763		80% D.F A CAB PCB MTG PANEL (M1, M2)
71	0121F00764		80% DF B & C CAB PCB MTG PANEL (M3, M4, M5, M6)
81	0121F00229		HEAT SHIELD
111	0131F00188		MOTOR PROGRAMMED (M1)
111	0131F00189		MOTOR PROGRAMMED (M2)
111	0131F00190		MOTOR PROGRAMMED (M3)
111	0131F00191		MOTOR PROGRAMMED (M4)
111	0131F00192		MOTOR PROGRAMMED (M5)
111	0131F00193		MOTOR PROGRAMMED (M6)
121	0150M00042		WHEEL, BLOWER (10 X 10) (M5, M6)
121	0150M00043		WHEEL, BLOWER (10 X 8) (M3, M4)
121	0150M00061		WHEEL,BLOWER (M1, M2)
131	0130F00038		LIMIT, PRIMARY 120 LT BLUE
141	0121M00039		MOUNT BAND, MOTOR (HEAVY DUTY)
151	0163M00538		MOUNT ARM, MOTOR (QTY 3)
181	B1392918		WASHER, FLAT 1/4 ID X 1 OD (QTY 3)
191	0163M00320		HEX HEAD ALL THREAD TAP BOLT
211	M0250565		SCREW-TC 1.25" (QTY 3)
211	M0250565		SCREW-TC 1.25" (QTY 3)
231	B1393800		LOCKNUT, NYLON INSERT 1/4 20
251	0159F00119		CTM, MOTOR HARNESS
261	2539307		BLWR SHL ASM 10X10 10X10 (M5, M6)
261	2539305		BLWR SHL ASM 10X6 10X6 (M1, M2)
261	2539306		BLWR SHL ASM 10X8 10X8 (M3, M4)
271	764741		BLWR BLK-OFF,10X10 (M5, M6)
271	764739		BLWR BLK-OFF,10X6 (M1, M2)
271	764740		BLWR BLK-OFF,10X8 (M3, M4)

Expanded Model Nomenclature

M1 - GC9C800403AXAA
M2 - GC9C800603AXAA
M3 - GC9C800603BXAA
M4 - GC9C800804BXAA
M5 - GC9C800805CXAA
M6 - GC9C801005CXAA

Heat Exchange Assembly

HEAT EXCHANGE ASSEMBLY



NOTE: HEAT EXCHANGE ASSEMBLY MAY DIFFER FROM WHAT IS SHOWN

Heat Exchange Assembly

Ref. Part No: No:	Description:	Ref. Part No: No:	Description:
Image 1:			
11	0270F03525		HEAT EXCHANGER ASSY (M1)
11	0270F03526		HEAT EXCHANGER ASSY (M2)
11	0270F03527		HEAT EXCHANGER ASSY (M4)
11	0270F03528		HEAT EXCHANGER ASSY (M6)
11	0270F03899		HEAT EXCHANGER ASSY (M3)
11	0270F03900		HEAT EXCHANGER ASSY (M5)
21	0121F00332		17.5" COLLECTOR BOX 1.375" DIA (M3)
21	0121F00331		17.5" COLLECTOR BOX 1.500" DIA (M4)
21	0121F00365		21" COLLECTOR BOX 1.437" DIA. (M5)
21	0121F00333		21" COLLECTOR BOX 1.75" DIA (M6)
21	0121F00126		COLLECTOR BOX 14" 1.375 DIA (M2)
21	0121F00781		COLLECTOR BOX, 14" (M1)
31	0128F00006		TRANSITION, BOTTOM
41	0131M00781P		MOTOR, VENT 2-STAGE
51	0151M00027		GAS VALVE
61	0120F00006		MANIFOLD (M1)
61	0120F00007		MANIFOLD (M2, M3)
61	0120F00008		MANIFOLD (M4, M5)
61	0120F00009		MANIFOLD (M6)
71	10716005		ORIFICE (QTY 2)
81	B4022700		INSHOT BURNER ASSY 3" (QTY 2)
91	0121F00167		BURNER RACK, 2 CELL (M1)
91	0121F00168		BURNER RACK, 3 CELL (M2, M3)
91	0121F00169		BURNER RACK, 4 CELL (M4, M5)
91	0121F00170		BURNER RACK, 5 CELL (M6)
101	0121F00162		TOP, BURNER BOX 2 CELL (M1)
101	0121F00759		TOP, BURNER BOX 3 CELL (M2, M3)
101	0121F00760		TOP, BURNER BOX 4 CELL (M4, M5)
101	0121F00761		TOP, BURNER BOX 5 CELL (M6)
111	10123529		MANUAL RESET R.O.S. LIMIT
121	0121F00146		BURNER BOX SIDE (QTY 2)
131	0130F00008		SINI IGNITOR
141	0130F00010		FLAME SENSOR
151	0130F00071		LIMIT SWITCH (M3)
151	0130F00067		LIMIT-RED (M5, M6)
151	0130F00036		PRIMARY LIMIT - PINK 180° (M1, M2, M4)
161	4028000		ORIFICE PLATE, 2CELL (M1)
161	4028001		ORIFICE PLATE, 3CELL (M2, M3)
161	4028002		ORIFICE PLATE, 4 CELL (M4, M5)
161	4028003		ORIFICE PLATE, 5CELL (M6)
171	0154F00003		GASKET-14 INCH (M1, M2)
171	0154F00004		GASKET-17.5 INCH (M3, M4)
171	0154F00005		GASKET-21 INCH (M5, M6)
201	DY6.186.070		VENT MOTOR CAPACITOR
NS	0259F00066		INDUCER HARNESS ASSY
NS	0159F00138		WIRE HARNESS (M2, M3, M4, M5, M6)
NS	0159F00139		WIRE HARNESS (M1)

Expanded Model Nomenclature

M1 - GC9C800403AXAA
M2 - GC9C800603AXAA
M3 - GC9C800603BXAA
M4 - GC9C800804BXAA
M5 - GC9C800805CXAA
M6 - GC9C801005CXAA