



REPAIR PARTS

GM9S 80% Multi Position Furnace

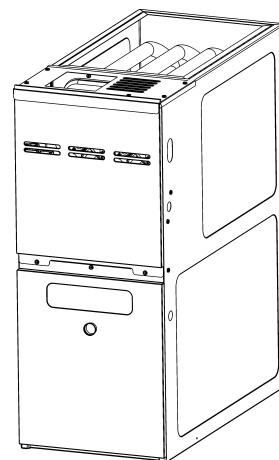
GM9S800403AUAA

GM9S800603AUAA

GM9S800604BUAA

GM9S800804BUAA

GM9S800805CUAA



This manual is to be used by qualified technicians only.

© 2021 Goodman Manufacturing Company, L.P. ♦ 5151 San Felipe St, Suite 500 ♦ Houston, TX 77056

Important Information

Index

Functional Parts List	3
Illustration and Parts	4 - 9

Views shown are for parts illustrations only, not servicing procedures.

Text Codes:

AR - As Required

NA - Not Available

NS - Not Shown

00000000 - See Note

QTY - Quantity Example (QTY 3) (If Quantity not shown, Quantity = 1)

M - Model Example (M1) (If M Code not shown, then part is used on all Models)

Expanded Model Nomenclature:

Example

M1 - Model#1

M2 - Model#2

M3 - Model#3

Goodman Manufacturing Company, L.P. is not responsible for personal injury or property damage resulting from improper service. Review all service information before beginning repairs.

Warranty service must be performed by an authorized technician, using authorized factory parts. If service is required after the warranty expires, Goodman Manufacturing Company, L.P. also recommends contacting an authorized technician and using authorized factory parts.

Goodman Manufacturing Company, L.P. reserves the right to discontinue, or change at any time, specifications or designs without notice or without incurring obligations.

For assistance within the U.S.A. contact:

Homeowner Support

Goodman Manufacturing Company, L.P.

19001 Kermier Road

Waller, Texas 77484

877-254-4729-Telephone

713-863-2382-Facsimile

For assistance outside the U.S.A. contact:

International Division

Goodman Manufacturing Company, L.P.

19001 Kermier Road

Waller, Texas 77484

713-861-2500-Telephone

713-863-2382-Facsimile

Functional Parts

Part

No: Description:

0130F00802	80% PRESSURE TRANSDUCER
0130F00762	FLAME SENSOR
0151M00094	GAS VALVE, ULN
10690402	INTERLOCK SWITCH
0130F00067	LIMIT, PRIMARY (M4, M5)
20162901	LIMIT, PRIMARY (M1, M2, M3)
0130F00038	LIMIT, PRIMARY 120 LT BLUE
0131F00304	MOTOR PROGRAMMED (M5)
0131F00300	MOTOR PROGRAMMED (M1)
0131F00301	MOTOR PROGRAMMED (M2)
0131F00303	MOTOR PROGRAMMED (M4)
0131F00302	MOTOR PROGRAMMED (M3)
0171M00010	MOTOR, VENT ULN80
PCBBF241	PCB IGNITION HIS
0130F00772	SWITCH, HIGH LIMIT ULN (M5)
0130F00771	SWITCH, HIGH LIMIT ULN (M2, M4)
0130F00770	SWITCH, HIGH LIMIT ULN (M1)
0130F00769	SWITCH, HIGH LIMIT ULN (M3)
0130M00140	TRANSFORMER,(120V TO 24V,40VA,
0130F00955	ULN IGNITER

SPECIAL PARTS

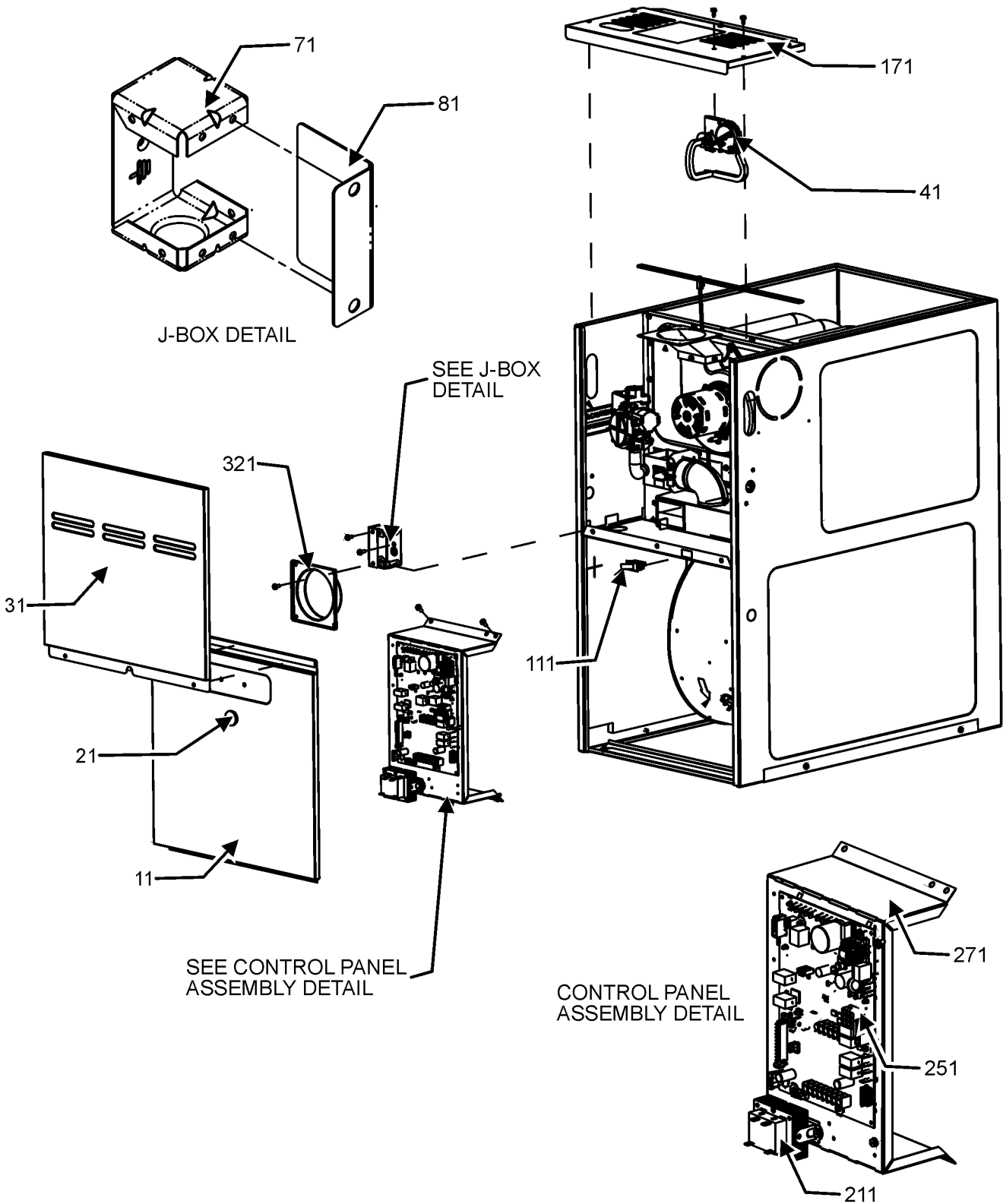
HI-130	HOMEOWNERS INSTRUCTIONS
IOG-2031	INSTALLATION INSTRUCTIONS
0161F00007	NAMEPLATE, GOODMAN
PWGFURNSUNT	PRODUCT WARRANTY

Expanded Model Nomenclature

M1 - GM9S800403AUAA
M2 - GM9S800603AUAA
M3 - GM9S800604BUAA
M4 - GM9S800804BUAA
M5 - GM9S800805CUAA

Cabinet and Control Panel Assembly

CABINET AND CONTROL PANEL ASSEMBLY



CABINET AND CONTROL PANEL ASSEMBLY MAY DIFFER FROM WHAT IS SHOWN

Cabinet and Control Panel Assembly

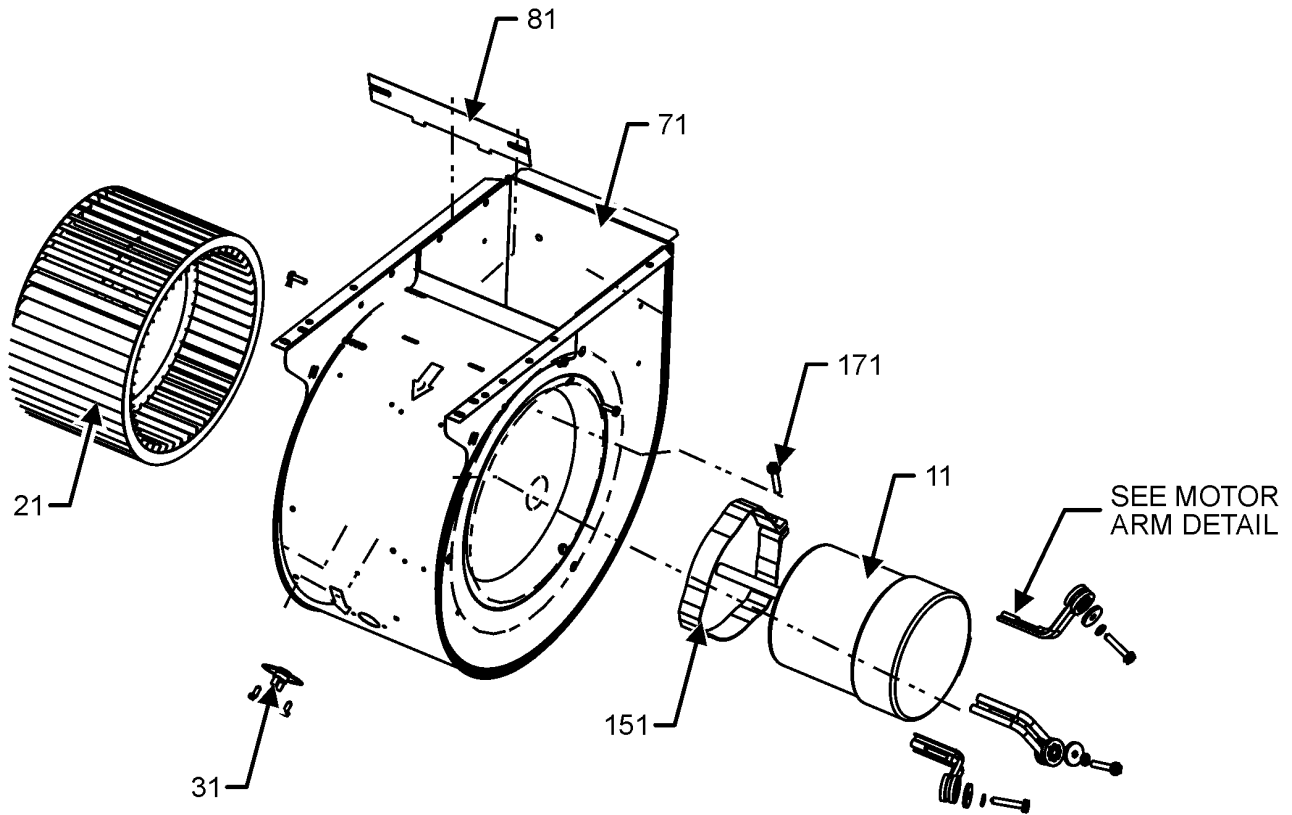
Ref. Part No: No:	Description:	Ref. Part No: No:	Description:
Image 1:			
11	0121F00122DG		DOOR, BLOWER, 14"-PAINTED (M1, M2)
11	0121F00123DG		DOOR, BLOWER, 17.5" PAINTED (M3, M4)
11	0121F00124DG		DOOR, BLOWER, 21"-PAINTED (M5)
21	B1392139		VIEW PORT BUSHING, CLEAR
31	0121F00118DG		DOOR CTRL ACCESS, 14"-PAINTED (M1, M2)
31	0121F00120DG		DOOR CTRL ACCESS, 21"-PAINTED (M5)
31	0121F00119DG		DOOR CTRL ACCESS, 17.5"-PAINTED (M3, M4)
41	0130F00802		80% PRESSURE TRANSDUCER
71	4014502		J-BOX
81	4015502		COVER, J-BOX
111	10690402		INTERLOCK SWITCH
171	0121F00141DG		TOP, FURNACE 14"-PAINTED (M1, M2)
171	0121F00142DG		TOP, FURNACE 17.5"-PAINTED (M3, M4)
171	0121F00143DG		TOP, FURNACE 21"-PAINTED (M5)
211	0130M00140		TRANSFORMER, (120V TO 24V, 40VA,
251	PCBBF241		PCB IGNITION HIS
271	0121F00794		MOUNTING PLATE CONTROLS
321	4023500		CHIMNEY TRANSITION TOP
NS	HI-130		HOMEOWNERS INSTRUCTIONS
NS	IOG-2031		INSTALLATION INSTRUCTIONS
NS	0161F00007		NAMEPLATE, GOODMAN
NS	PWGFURNSUNT		PRODUCT WARRANTY

Expanded Model Nomenclature

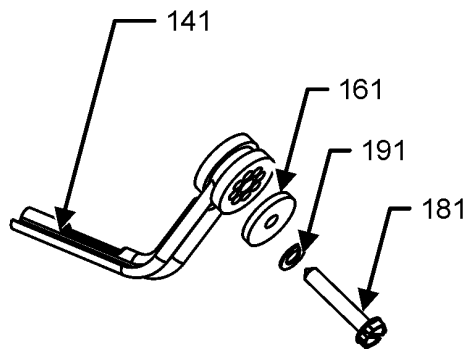
M1 - GM9S800403AUAA M2 - GM9S800603AUAA M3 - GM9S800604BUAA M4 - GM9S800804BUAA M5 - GM9S800805CUAA

Blower Assembly

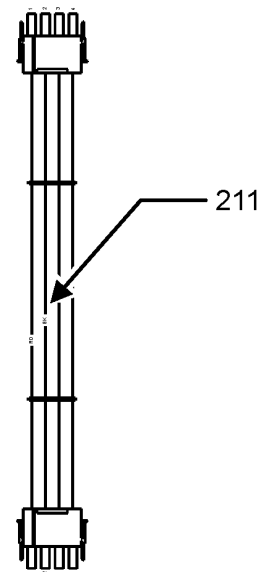
BLOWER ASSEMBLY



LIMIT LOCATION MAY DIFFER
FROM WHAT IS SHOWN



MOTOR ARM DETAIL



BLOWER ASSEMBLY MAY DIFFER FROM WHAT IS SHOWN

Blower Assembly

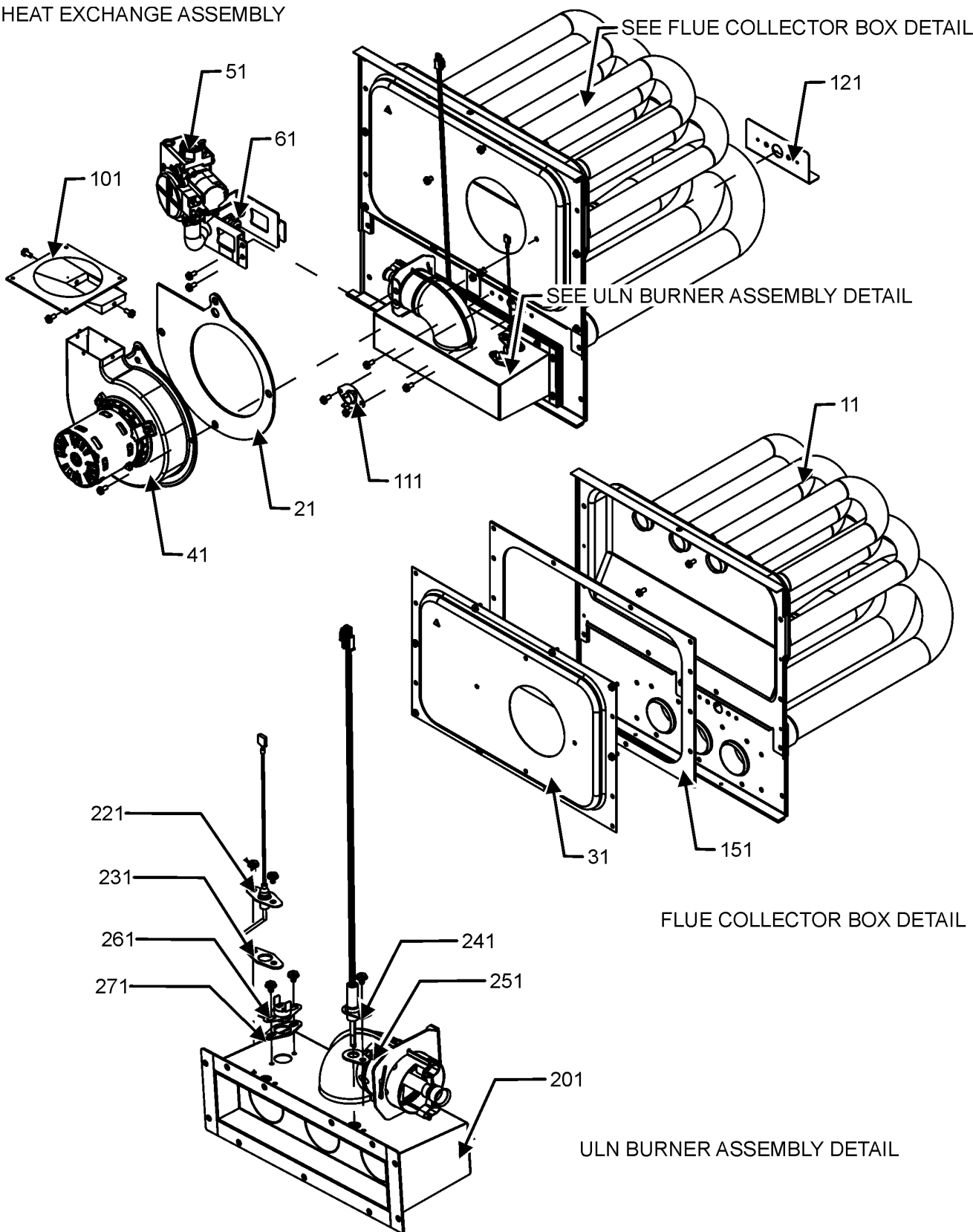
Ref. Part No: No:	Description:	Ref. Part No: No:	Description:
Image 1:			
11	0131F00300		MOTOR PROGRAMMED (M1)
11	0131F00301		MOTOR PROGRAMMED (M2)
11	0131F00302		MOTOR PROGRAMMED (M3)
11	0131F00303		MOTOR PROGRAMMED (M4)
11	0131F00304		MOTOR PROGRAMMED (M5)
21	B1368034		BLOWER WHEEL (10 X 6) (M1, M2)
21	0150M00042		WHEEL, BLOWER (10 X 10) (M5)
21	0150M00043		WHEEL, BLOWER (10 X 8) (M3, M4)
31	0130F00038		LIMIT, PRIMARY 120 LT BLUE
71	2539307		BLWR SHL ASM 10X10 10X10 (M5)
71	2539305		BLWR SHL ASM 10X6 10X6 (M1, M2)
71	2539306		BLWR SHL ASM 10X8 10X8 (M3, M4)
81	764741		BLWR BLK-OFF,10X10 (M5)
81	764739		BLWR BLK-OFF,10X6 (M1, M2)
81	764740		BLWR BLK-OFF,10X8 (M3, M4)
141	0163M00538		MOUNT ARM, MOTOR (QTY 3)
151	0121M00039		MOTOR MOUNT BAND (HEAVY DUTY)
161	B1392918		WASHER, FLAT 1/4 ID X 1 OD (QTY 3)
171	0163M00320		HEX HEAD ALL THREAD TAP BOLT
181	M0250565		SCREW-TC 1.25" (QTY 3)
191	B1393800		LOCK NUT NYLON IINISERT 1/4 20
211	0159F00119		CTM, MOTOR HARNESS

Expanded Model Nomenclature

M1 - GM9S800403AUAA M2 - GM9S800603AUAA M3 - GM9S800604BUAA M4 - GM9S800804BUAA M5 - GM9S800805CUAA

Heat Exchange Assembly

HEAT EXCHANGE ASSEMBLY



HEAT EXCHANGE ASSEMBLY MAY DIFFER FROM WHAT IS SHOWN

Heat Exchange Assembly

Ref. Part No: No:	Description:	Ref. Part No: No:	Description:
Image 1:			
11	0270F03775		ASSY, EXCHANGER, HEAT (M5)
11	0270F03773		ASSY., HEAT EXCHANGER (M3)
11	0270F03774		ASSY., HEAT EXCHANGER (M1)
11	0270F04357		ASSY., HEAT EXCHANGER (M2)
11	0270F04358		ASSY., HEAT EXCHANGER (M4)
21	0154F00048		GASKET, 14 INCH (M1, M2)
21	0154F00049		GASKET, 17.5 INCH (M3, M4)
21	0154F00050		GASKET, 21 INCH (M5)
31	0121F00333		21" COLLECTOR BOX 1.75" DIA (M5)
31	0121F00126		COLLECTOR BOX 14" 1.375 DIA (M1, M2)
31	0121F00128		COLLECTOR BOX 17.5" 1.75 DIA (M3, M4)
41	0171M00010		MOTOR, VENT ULN80
51	0151M00094		GAS VALVE, ULN
61	0263F00004		ASSY., MANIFOLD (M1)
61	0263F00005		ASSY., MANIFOLD (M2, M3)
61	0263F00006		ASSY., MANIFOLD (M4, M5)
101	0128F00006		TRANSITION, BOTTOM
111	0130F00067		LIMIT, PRIMARY (M4, M5)
111	20162901		LIMIT, PRIMARY (M1, M2, M3)
121	0121F00439		HEAT SHEILD PRIMARY LIMIT
151	0154F00084		GASKET, PART PANEL (M1, M2)
151	0154F00085		GASKET, PART PANEL (M3, M4)
151	0154F00086		GASKET, PART PANEL (M5)
201	0163F00023		BURNER, BECKETT 2B (M1)
201	0163F00024		BURNER, BECKETT 3B (M2, M3)
201	0163F00025		BURNER, BECKETT 4B (M4, M5)
221	0130F00762		FLAME SENSOR
231	0154F00068		GASKET ULN FLAME SENSOR
241	0130F00955		ULN IGNITER
251	0154F00067		GASKET ULN IGNITOR
261	0130F00769		SWITCH, HIGH LIMIT ULN (M3)
261	0130F00770		SWITCH, HIGH LIMIT ULN (M1)
261	0130F00771		SWITCH, HIGH LIMIT ULN (M2, M4)
261	0130F00772		SWITCH, HIGH LIMIT ULN (M5)
271	0154F00069		GASKET LIMIT ULN
NS	0154F00093		BURNER GASKET-INSULATION (M1)
NS	0154F00094		BURNER GASKET-INSULATION (M2, M3)
NS	0154F00095		BURNER GASKET-INSULATION (M4, M5)
NS	DY6.186.070		VENT MOTOR CAPACITOR
NS	0159F00146		WIRE HARNESS

Expanded Model Nomenclature

M1 - GM9S800403AUAA
M2 - GM9S800603AUAA
M3 - GM9S800604BUAA
M4 - GM9S800804BUAA
M5 - GM9S800805CUAA