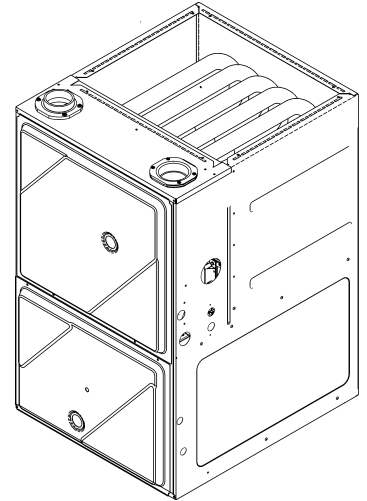




REPAIR PARTS

GC9C 96% EEM Counter Flow Furnace

GC9C960403BNAA
GC9C960603BNAA
GC9C960803BNAA
GC9C961005CNAA



This manual is to be used by qualified technicians only.

© 2021 Goodman Manufacturing Company, L.P. ♦ 5151 San Felipe St, Suite 500 ♦ Houston, TX 77056

Important Information

Index

Functional Parts List	3
Illustration and Parts	4 - 11

Views shown are for parts illustrations only, not servicing procedures.

Text Codes:

AR - As Required

NA - Not Available

NS - Not Shown

00000000 - See Note

QTY - Quantity Example (QTY 3) (If Quantity not shown, Quantity = 1)

M - Model Example (M1) (If M Code not shown, then part is used on all Models)

Expanded Model Nomenclature:

Example M1 - Model#1 M2 - Model#2 M3 - Model#3

Goodman Manufacturing Company, L.P. is not responsible for personal injury or property damage resulting from improper service. Review all service information before beginning repairs.

Warranty service must be performed by an authorized technician, using authorized factory parts. If service is required after the warranty expires, Goodman Manufacturing Company, L.P. also recommends contacting an authorized technician and using authorized factory parts.

Goodman Manufacturing Company, L.P. reserves the right to discontinue, or change at any time, specifications or designs without notice or without incurring obligations.

For assistance within the U.S.A. contact:

Homeowner Support

Goodman Manufacturing Company, L.P.

19001 Kermier Road

Waller, Texas 77484

877-254-4729-Telephone

713-863-2382-Facsimile

For assistance outside the U.S.A. contact:

International Division

Goodman Manufacturing Company, L.P.

19001 Kermier Road

Waller, Texas 77484

713-861-2500-Telephone

713-863-2382-Facsimile

Functional Parts

Part

No: Description:

20162904	*PRIMARY LIMIT-TEMPERATURE CONTROL (M3)
0130F00038	AUX LIMIT - LT BLUE 120° (QTY 2)
0163F00017	BECKETT BURNER (QTY 2)
0271F00181	BLOWER HSG ASSY (M1)
0271F00161	BLOWER SHELL & WHEEL ASSY (M4)
0271F00159	BLOWER SHELL & WHEEL ASSY (M2, M3)
764740	BLWR BLK-OFF, 10X8 (M1)
PCBBF164	CIRCUIT BOARD FURNACE
0130F00010	FLAME SENSOR
0151M00027	GAS VALVE
0257F00419	HEAT EXCHANGER ASSY (M1)
0257F00420	HEAT EXCHANGER ASSY (M2)
0257F00421	HEAT EXCHANGER ASSY (M3)
0257F00429	HEAT EXCHANGER ASSY (M4)
0130F00008	IGNITOR-SINI 17 SEC
10123538	MANUAL RESET R.O.S. LIMIT (M2)
10123533	MANUAL RESET R.O.S. LIMIT (M1, M3)
0130F00123	MANUAL RESET R.O.S. LIMIT (M4)
0131F00231	MOTOR PROGRAMMED (M4)
0131F00228	MOTOR PROGRAMMED (M1)
0131F00229	MOTOR PROGRAMMED (M2)
0131F00230	MOTOR PROGRAMMED (M3)
0171M00002	MOTOR-ID, BLOWER
0130F00434	PRESSURE SWITCH (M4)
0130F00435	PRESSURE SWITCH (M1, M2)
0130F00436	PRESSURE SWITCH (M3)
0130F00429	PRESSURE SWITCH
20162906	PRIMARY LIMIT - WHITE (M1, M2, M4)
0130M00243	SWITCH, INTERLOCK
0130M00140	TRANSFORMER, 120V TO 24V, 40VA
0150M00043	WHEEL, BLOWER (10 X 8) (M1)

SPECIAL PARTS

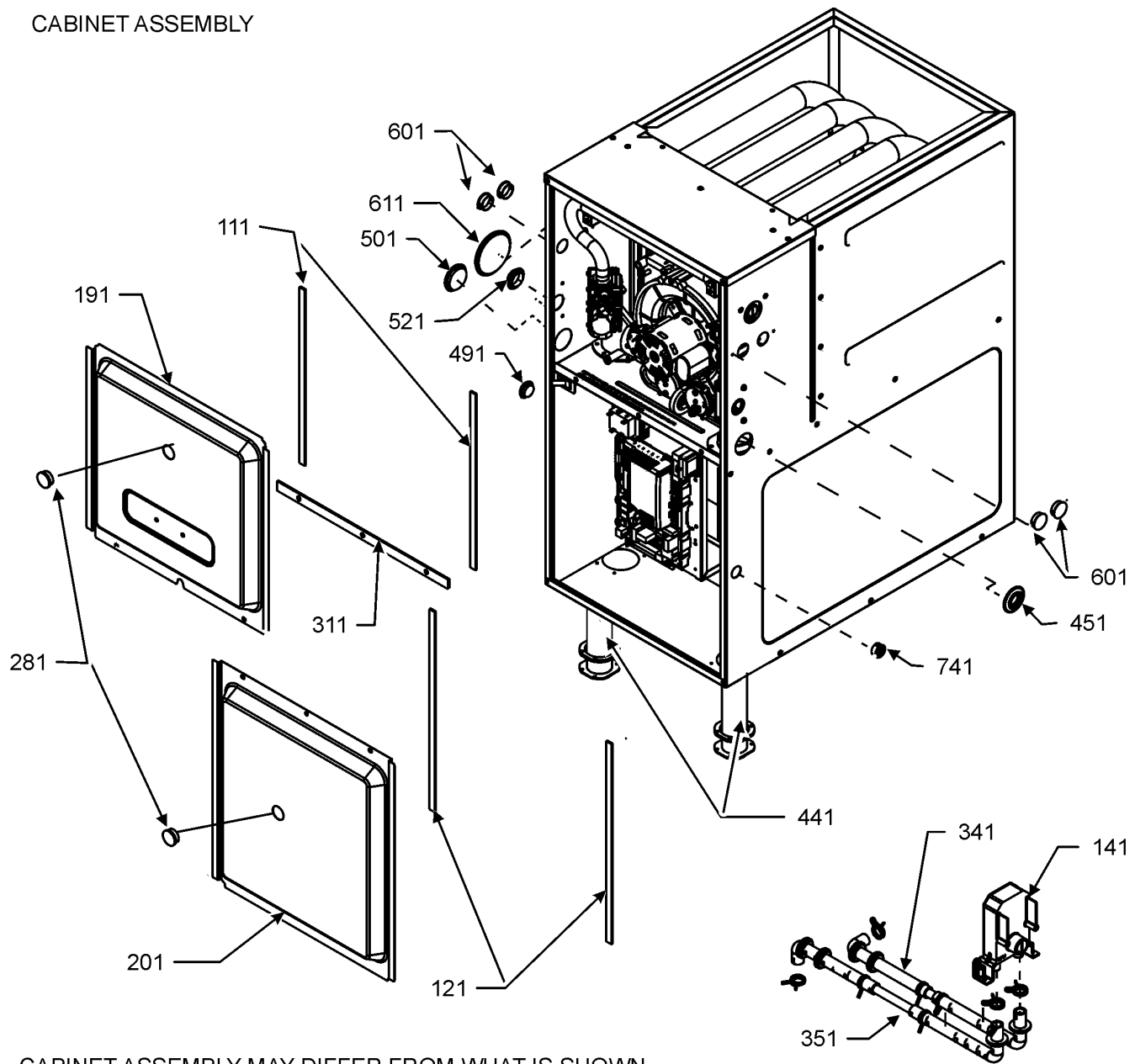
0161F00086 NAMEPLATE, GOODMAN

Expanded Model Nomenclature

M1 - GC9C960403BNAA
M2 - GC9C960603BNAA
M3 - GC9C960803BNAA
M4 - GC9C961005CNAA

Cabinet Assembly

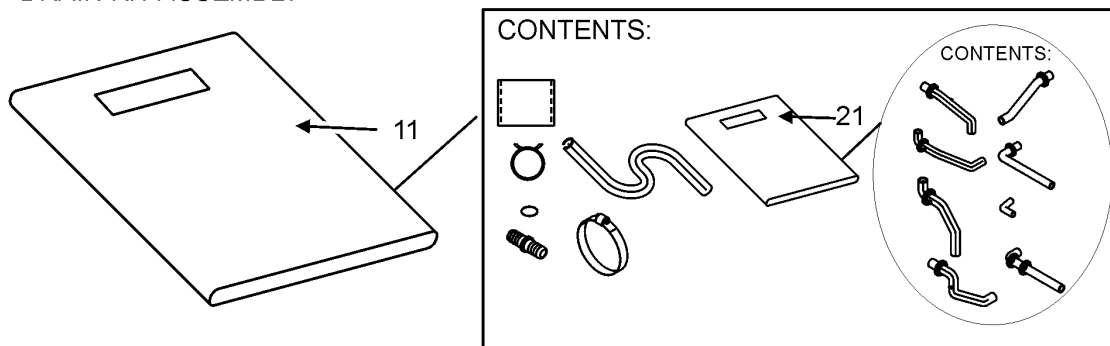
CABINET ASSEMBLY



CABINET ASSEMBLY MAY DIFFER FROM WHAT IS SHOWN

DRAIN TRAP ASSEMBLY

DRAIN KIT ASSEMBLY



Cabinet Assembly

Ref. Part No: No:	Description:	Ref. Part No: No:	Description:
Image 1:			
11	0270F05402		DRAIN KIT ASSY
21	0270F05402		DRAIN KIT ASSY
111	0154F00024		GASKET (QTY 2)
121	0154F00025		GASKET (QTY 2)
141	0161F00046		DRAIN TRAP
191	0121F00291DG		DOOR, ACCESS 17.5 PNT (M1, M2, M3)
191	0121F00292DG		DOOR, ACCESS 21 PNT (M4)
201	0121F00288DG		DOOR, BLOWER 17.5 PNT (M1, M2, M3)
201	0121F00289DG		DOOR, BLOWER 21 PNT (M4)
281	B1392139		VIEW PORT BUSHING (QTY 2)
311	0154F00020		DECK GASKET (M1, M2, M3)
311	0154F00021		DECK GASKET (M4)
341	0270F03125		CF DRAIN TUBE ASSY (M1, M2, M3)
341	0270F03515		CF DRAIN TUBE ASSY (M4)
351	0270F03126		CF DRAIN TUBE ASSY (M4)
351	0270F03514		CF DRAIN TUBE ASSY (M1, M2, M3)
441	0161F00064		PIPE, STRAIGHT CF (QTY 2)
451	M0501301		PIPE GROMMET
491	M0570808		BUTTON PLUG
501	M0570806		BUTTON PLUG
521	0161M00027		HOLE PLUG
601	B1392021		PLASTIC PLUG, 1" (2713-BLK) (QTY 4)
611	0163M00460		CLAMP-HOSE (QTY 2)
741	B1392104		UNIVERSAL BUSHING UB 875
NS	M0310345		BUTTON PLUG (QTY 2)
NS	M0570807		BUTTON PLUG
NS	M0209730		DECORATIVE SCREW (QTY 3)
NS	0154F00041		FRESH AIR GASKET
NS	0163M00319		HEX NUT INSERT (QTY 3)
NS	0161F00086		NAMEPLATE, GOODMAN
NS	M0273904		RETAINER SCREW (QTY 3)

Expanded Model Nomenclature

M1 - GC9C960403BNAA
M2 - GC9C960603BNAA
M3 - GC9C960803BNAA
M4 - GC9C961005CNAA

BLOWER ASSEMBLY

Exploded view diagram of a blower assembly. The diagram shows the following components and their assembly relationships:

- 31**: Blower housing (main body).
- 51**: Blower housing (inner/outer shell).
- 521**: Screws used for mounting the housing.
- 461**: Mounting bracket or plate.
- 381**: Electrical connector or switch component.
- 21**: Blower wheel or impeller.
- 251**: Mounting bracket or plate for the wheel.
- 151**: Mounting bracket or plate for the motor.
- 181**: Blower motor.
- 141**: Mounting bracket or plate for the motor.
- 281**: Mounting bracket or plate for the motor.
- 401**: Electrical control unit or switch.

SEE BLOWER MOTOR MOUNTING DETAIL

SEE BLOWER MOTOR
MOUNTING DETAIL

Diagram illustrating the Blower Motor Mounting Detail. The components shown are:

- MOTOR MOUNT ARM REFERENCE
- SPLIT LOCK WASHER REFERENCE ONLY
- 231
- 261
- GROMMET

BLOWER MOTOR MOUNTING DETAIL

BLOWER MOTOR MOUNTING DETAIL

6

Blower Assembly

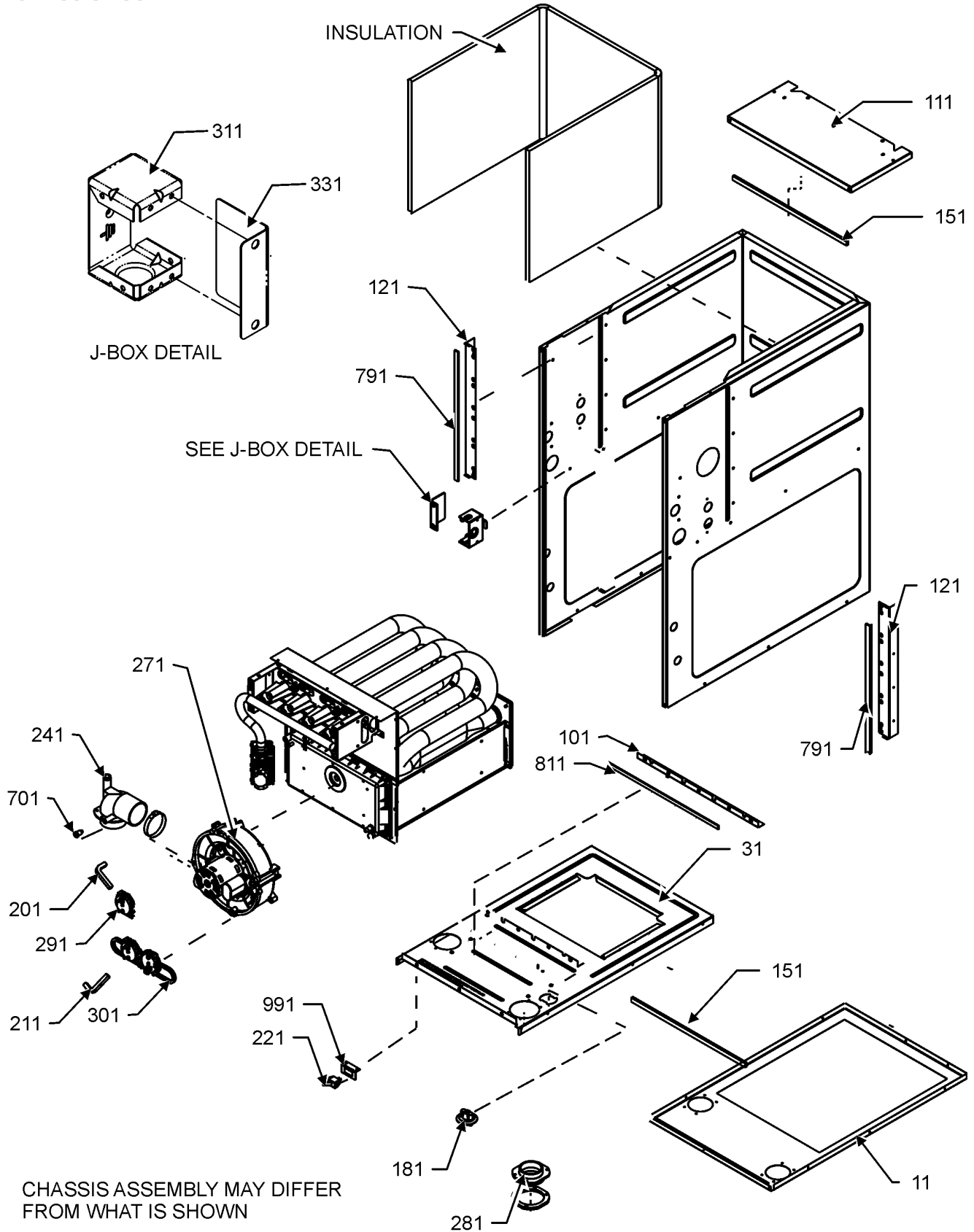
Ref. Part No: No:	Description:	Ref. Part No: No:	Description:
Image 1:			
21	0150M00043		WHEEL, BLOWER (10 X 8) (M1)
31	0271F00181		BLOWER HSG ASSY (M1)
31	0271F00159		BLOWER SHELL & WHEEL ASSY (M2, M3)
31	0271F00161		BLOWER SHELL & WHEEL ASSY (M4)
51	764740		BLWR BLK-OFF,10X8 (M1)
141	0121M00039		MOUNT BAND, MOTOR (HEAVY DUTY)
151	0163M00538		MOUNT ARM, MOTOR (QTY 3)
181	0131F00228		MOTOR PROGRAMMED (M1)
181	0131F00229		MOTOR PROGRAMMED (M2)
181	0131F00230		MOTOR PROGRAMMED (M3)
181	0131F00231		MOTOR PROGRAMMED (M4)
231	M0250565		TC SCREW 1.25" (QTY 3)
251	0163M00320		HEX HEAD ALL THREAD TAP BOLT
261	B1392918		FLAT WASHER (QTY 3)
281	B1393800		LOCKNUT, NYLON, INSERT 1/4, 20
381	0130M00140		TRANSFORMER, 120V TO 24V,40VA
401	PCBBF164		CIRCUIT BOARD FURNACE
461	0121F00464		CONTROL MOUNTING PLATE
521	0130F00038		AUX LIMIT - LT BLUE 120° (QTY 2)
NS	B1392021		1" PLASTIC PLUG (QTY 4)
NS	0159F00119		CTM, MOTOR HARNESS
NS	0259F00024		HARNESS - BLOWER

Expanded Model Nomenclature

M1 - GC9C960403BNAA M2 - GC9C960603BNAA M3 - GC9C960803BNAA M4 - GC9C961005CNAA
--

Chassis Assembly

CHASSIS ASSEMBLY



Chassis Assembly

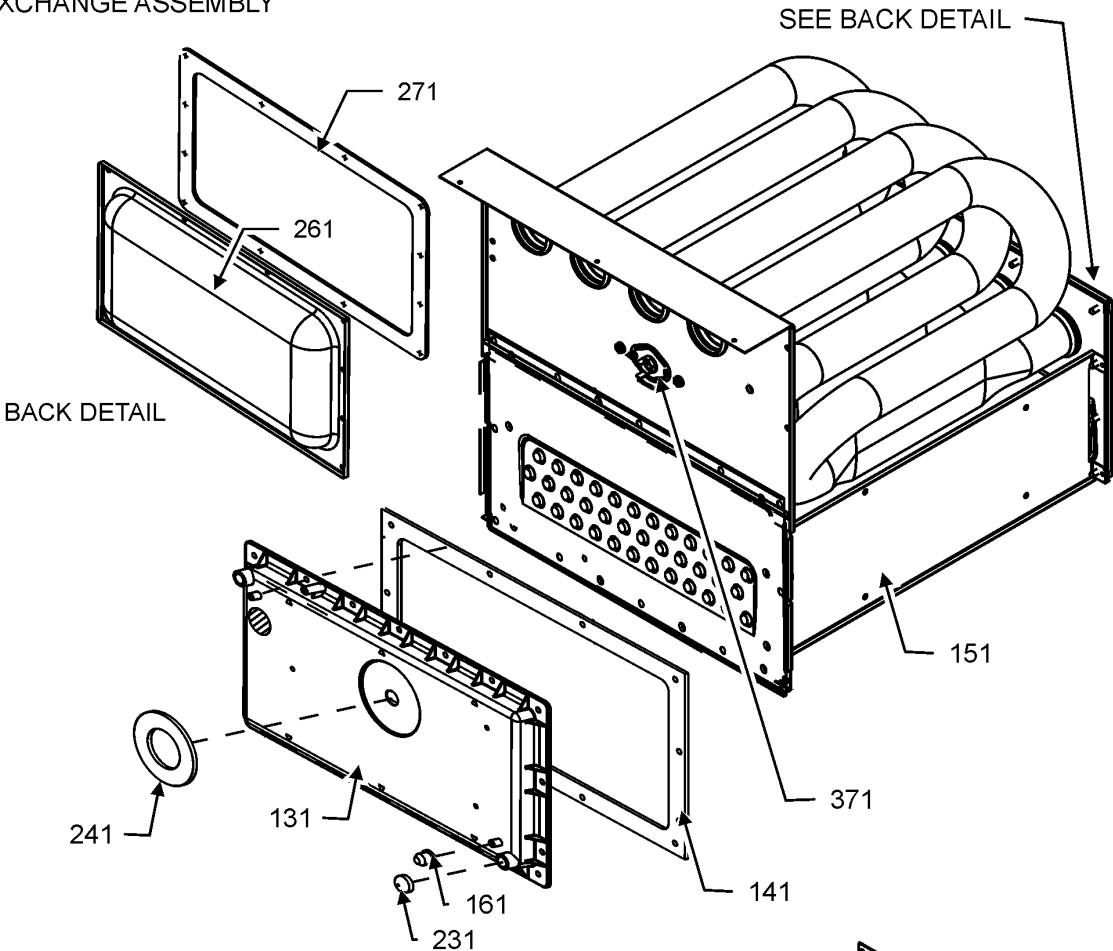
Ref. Part No: No:	Description:	Ref. Part No: No:	Description:
Image 1:			
11	0121F00548DG		PAINTED BASEPAN, 17.5 CF (M1, M2, M3)
11	0121F00549DG		PAINTED BASEPAN, 21 CF (M4)
31	0121F00536		DECK-BLOWER 17.5" CF (M1, M2, M3)
31	0121F00537		DECK-BLOWER 21" CF (M4)
101	0121F00314		ANGLE, DECK (M1, M2, M3)
101	0121F00315		ANGLE, DECK (M4)
111	0121F00426DG		TOP, PAINTED FURNACE 17.5" CF (M1, M2, M3)
111	0121F00434DG		TOP, PAINTED FURNACE 21" CF (M4)
121	0121F00313		SIDE ANGLE (QTY 2)
151	20179309		GASKET (M1, M2, M3)
151	20179310		GASKET (M4)
181	0159F00140		HARNESS, WIRING (M1)
181	0159F00141		HARNESS, WIRING (M2, M3, M4)
201	0164M00115		HOSE- PRESSURE SW 6"
211	0164M00117		HOSE- PRESSURE SW 8" (M4)
221	0130M00243		SWITCH, INTERLOCK
241	0164F00026		ELBOW-FLUE, 17.5" CFLOW (M1, M2, M3)
241	0164F00027		ELBOW-FLUE, 21" CFLOW (M4)
271	0171M00002		MOTOR-ID, BLOWER
281	0161F00037		COUPLING
291	0130F00429		PRESSURE SWITCH
301	0130F00434		PRESSURE SWITCH (M4)
301	0130F00435		PRESSURE SWITCH (M1, M2)
301	0130F00436		PRESSURE SWITCH (M3)
311	0161F00042		JUNCTION BOX
331	0161F00043		JUNCTION BOX LID
701	M0326804		TUBE PLUG
791	0154F00015		GASKET (QTY 2)
811	0154F00014		GASKET (M1, M2, M3)
811	0154F00016		GASKET (M4)
991	0121F00389		BRACKET, DOOR SWITCH
NS	0160F00015		INSULATION, HT EXCHANGER 17.5" (M1, M2, M3)
NS	0160F00016		INSULATION, HT EXCHANGER 21" (M4)

Expanded Model Nomenclature

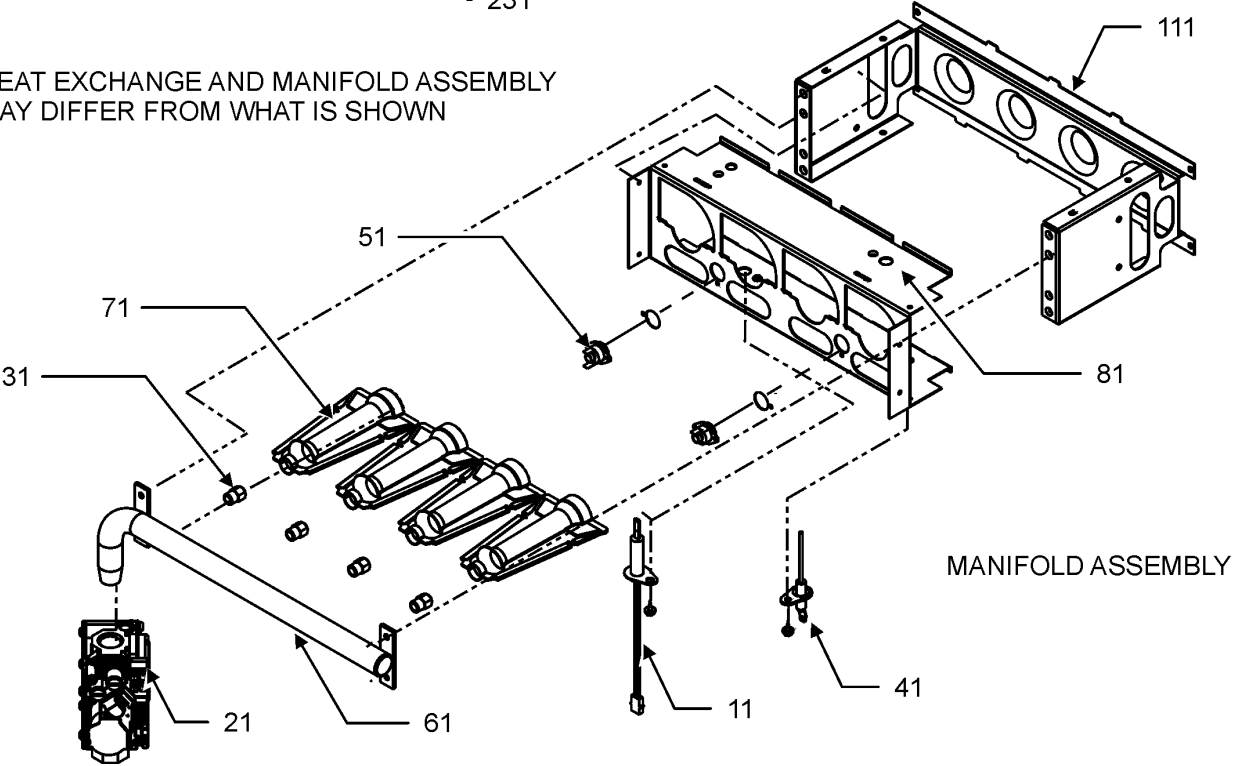
M1 - GC9C960403BNAA M2 - GC9C960603BNAA M3 - GC9C960803BNAA M4 - GC9C961005CNAA
--

Heat Exchange and Manifold Assembly

HEAT EXCHANGE ASSEMBLY



HEAT EXCHANGE AND MANIFOLD ASSEMBLY
MAY DIFFER FROM WHAT IS SHOWN



Heat Exchange and Manifold Assembly

Ref. Part No: No:	Description:	Ref. Part No: No:	Description:
Image 1:			
11	0130F00008		IGNITOR-SINI 17 SEC
21	0151M00027		GAS VALVE
31	10716005		ORIFICE (QTY 2)
41	0130F00010		FLAME SENSOR
51	0130F00123		MANUAL RESET R.O.S. LIMIT (M4)
51	10123533		MANUAL RESET R.O.S. LIMIT (M1, M3)
51	10123538		MANUAL RESET R.O.S. LIMIT (M2)
61	0163F00007		MANIFOLD (M1)
61	0163F00008		MANIFOLD (M2)
61	0163F00010		MANIFOLD (M4)
61	0163F00014		MANIFOLD (M3)
71	0163F00017		BECKETT BURNER (QTY 2)
81	0121F00456		BRACKET-BURNER 2 (M1)
81	0121F00455		BRACKET-BURNER 3 (M2)
81	0121F00454		BRACKET-BURNER 4 (M3)
81	0121F00453		BRACKET-BURNER 5 (M4)
111	0121F00469		ORIFICE BRACKET-BURNER 2 (M1)
111	0121F00468		ORIFICE BRACKET-BURNER 3 (M2)
111	0121F00467		ORIFICE BRACKET-BURNER 4 (M3)
111	0121F00466		ORIFICE BRACKET-BURNER 5 (M4)
131	0161F00053		FRONT COVER (M1)
131	0161F00072		FRONT COVER (M4)
131	0161F00078		FRONT COVER (M2)
131	0161F00079		FRONT COVER (M3)
141	0154F00026		GASKET FRONT COVER (M1, M2, M3)
141	0154F00030		GASKET FRONT COVER (M4)
151	0257F00419		HEAT EXCHANGER ASSY (M1)
151	0257F00420		HEAT EXCHANGER ASSY (M2)
151	0257F00421		HEAT EXCHANGER ASSY (M3)
151	0257F00429		HEAT EXCHANGER ASSY (M4)
161	M0326804		TUBE PLUG
231	A1781105		CAP-VINYL .500
241	0154F00043		GASKET ID BLOWER
261	0121F00317		REAR COVER (M1, M2, M3)
261	0121F00318		REAR COVER (M4)
271	0154F00037		REAR COVER GASKET (M1, M2, M3)
271	0154F00038		REAR COVER GASKET (M4)
371	20162904		*PRIMARY LIMIT-TEMPERATURE CONTROL (M3)
371	20162906		PRIMARY LIMIT - WHITE (M1, M2, M4)
NS	0154F00041		GASKET FRESH AIR
NS	0121F00583		INSULATION, RETAINER (M1, M2, M3)
NS	0121F00584		INSULATION, RETAINER (M4)
NS	0121F00439		PRIMARY LIMIT-HEAT SHIELD
NS	0121F00542		SHIELD, BURNER (M4)
NS	0121F00355		SHIELD, COIL (QTY 2)

Expanded Model Nomenclature

M1 - GC9C960403BNAA
M2 - GC9C960603BNAA
M3 - GC9C960803BNAA
M4 - GC9C961005CNAA