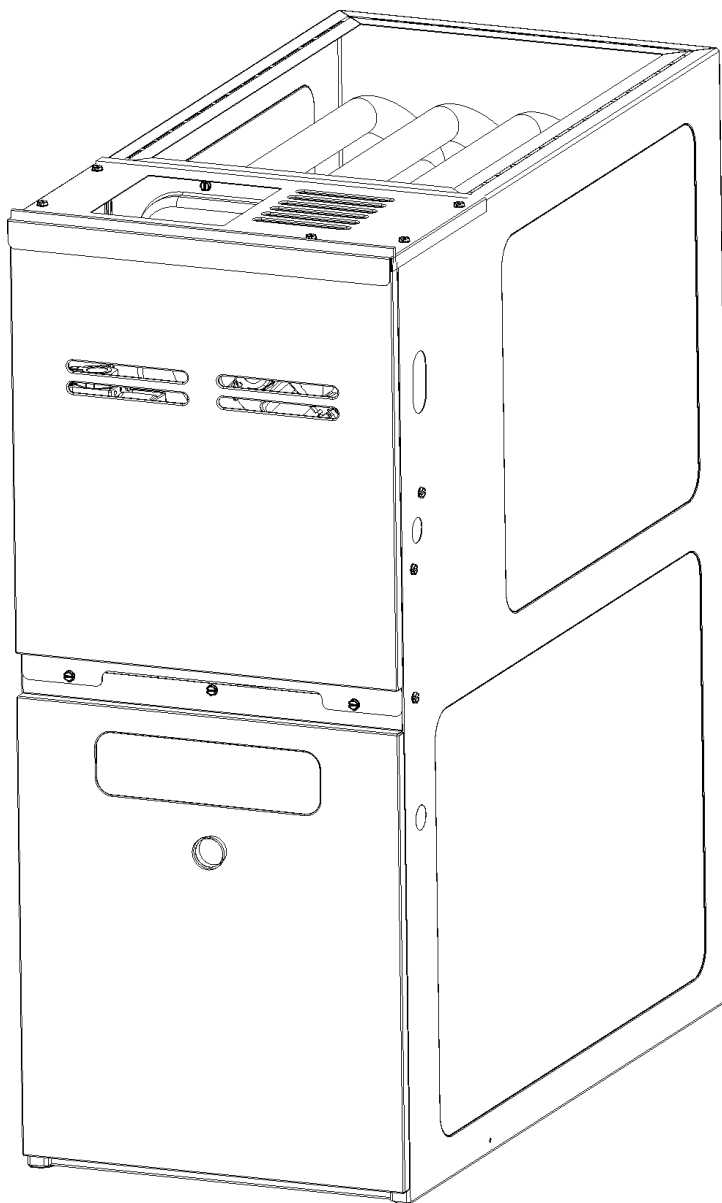


GMVC 80% Variable Speed Communicating Furnace

GMVC80604BNAA
GMVC80604BNBA
GMVC80604BNBB
GMVC80604BNBC
GMVC80604BXAA
GMVC80604BXBA
GMVC80604BXBB
GMVC80604BXBC
GMVC80805CNAA
GMVC80805CNBA
GMVC80805CNBB
GMVC80805CNBC
GMVC80805CXAA
GMVC80805CXBA
GMVC80805CXBB
GMVC80805CXBC
GMVC81005CNAA
GMVC81005CNBA
GMVC81005CNBB
GMVC81005CNBC
GMVC81005CXAA
GMVC81005CXBA
GMVC81005CXBB
GMVC81005CXBC



This manual is to be used by qualified technicians only.

This manual replaces RP-671C.

Important Information

Index

Functional Parts List	3
Illustration and Parts	4 - 9

Views shown are for parts illustrations only, not servicing procedures

Text Codes:

AR - As Required

NA - Not Available

NS - Not Shown

00000000 - See Note

QTY - Quantity Example (QTY 3) (If Quantity not shown, Quantity = 1)

M - Model Example (M1) (If M Code not shown, then part is used on all Models)

Expanded Model Nomenclature:

Example

M1 - Model#1

M2 - Model#2

M3 - Model#3

Goodman Manufacturing Company, L.P. is not responsible for personal injury or property damage resulting from improper service. Review all service information before beginning repairs.

Warranty service must be performed by an authorized technician, using authorized factory parts. If service is required after the warranty expires, Goodman Manufacturing Company, L.P. also recommends contacting an authorized technician and using authorized factory parts.

Goodman Manufacturing Company, L.P. reserves the right to discontinue, or change at any time, specifications or designs without notice or without incurring obligations.

For assistance within the U.S.A. contact:

Consumer Affairs Department

Goodman Manufacturing Company, L.P.

7401 Security Way

Houston, Texas 77040

877-254-4729-Telephone

713-863-2382-Facsimile

For assistance outside the U.S.A. contact:

International Division

Goodman Manufacturing Company, L.P.

7401 Security Way

Houston, Texas 77040

713-861-2500-Telephone

713-863-2382-Facsimile

Functional Parts

Part

No:

Description:

20162904	*PRIMARY LIMIT-TEMPERATURE CONTROL (M17, M21) *Refer to service bulletin SF-054
0130F00050	AIR PRESSURE SWITCH (M9, M13, M17, M21)
0130F00049	AIR PRESSURE SWITCH (M1, M2, M3, M4, M5, M6, M7, M8, M10, M11, M12, M14, M15, M16)
0130F00038	AUX LIMIT - LT BLUE 120°
0130F00217	DATA, FURNACE PCB (M17)
0130F00216	DATA, FURNACE PCB (M9)
0130F00420	DATA, FURNACE PCB (M24)
0130F00218	DATA, FURNACE PCB (M5)
0130F00219	DATA, FURNACE PCB (M13)
0130F00220	DATA, FURNACE PCB (M21)
0130F00233	DATA, FURNACE PCB (M2)
0130F00234	DATA, FURNACE PCB (M10)
0130F00235	DATA, FURNACE PCB (M18)
0130F00236	DATA, FURNACE PCB (M6)
0130F00415	DATA, FURNACE PCB (M4)
0130F00215	DATA, FURNACE PCB (M1)
0130F00237	DATA, FURNACE PCB (M14)
0130F00418	DATA, FURNACE PCB (M16)
0130F00419	DATA, FURNACE PCB (M20)
0130F00416	DATA, FURNACE PCB (M8)
0130F00417	DATA, FURNACE PCB (M12)
0130F00269	DATA, FURNACE PCB (M23)
0130F00268	DATA, FURNACE PCB (M19)
0130F00267	DATA, FURNACE PCB (M15)
0130F00266	DATA, FURNACE PCB (M11)
0130F00265	DATA, FURNACE PCB (M7)
0130F00264	DATA, FURNACE PCB (M3)
0130F00238	DATA, FURNACE PCB (M22)
0130F00010	FLAME SENSOR
0130F00008	IGNITOR-SINI 17 SEC
0130M00141	INDUCTOR, 5.9 AMPS (GMPE100-4)
10690402	INTERLOCK SWITCH
10123529	MANUAL RESET R.O.S. LIMIT (QTY 2)
0131M00271	MOTOR, 3/4 HP, SERIAL ECM
PCBKF102	PCB, CONTROL, FURNACE (M1, M2, M5, M6, M9, M10, M13, M14, M17, M18, M21, M22)
PCBKF104	PCB, CONTROL, FURNACE (M3, M4, M7, M8, M11, M12, M15, M16, M19, M20, M23, M24)
B1370210	PRESSURE SWITCH, PINK (M18, M19, M20, M22, M23, M24)
20162903	PRIMARY LIMIT - BLUE (M1, M5)
0130M00063	PRIMARY LIMIT - GOLD 140° (M2, M3, M4, M6, M7, M8, M9, M10, M11, M12, M13, M14, M15, M16)
20162905	PRIMARY LIMIT-YELLOW (M18, M19, M20, M22, M23, M24)
0130M00140	TRANSFORMER 120V TO 24V, 40VA
0151M00028	VALVE,GAS(HW)VR92
DY6.186.070	VENT MOTOR CAPACITOR
0131M00003P	VENT MOTOR, 2-STAGE

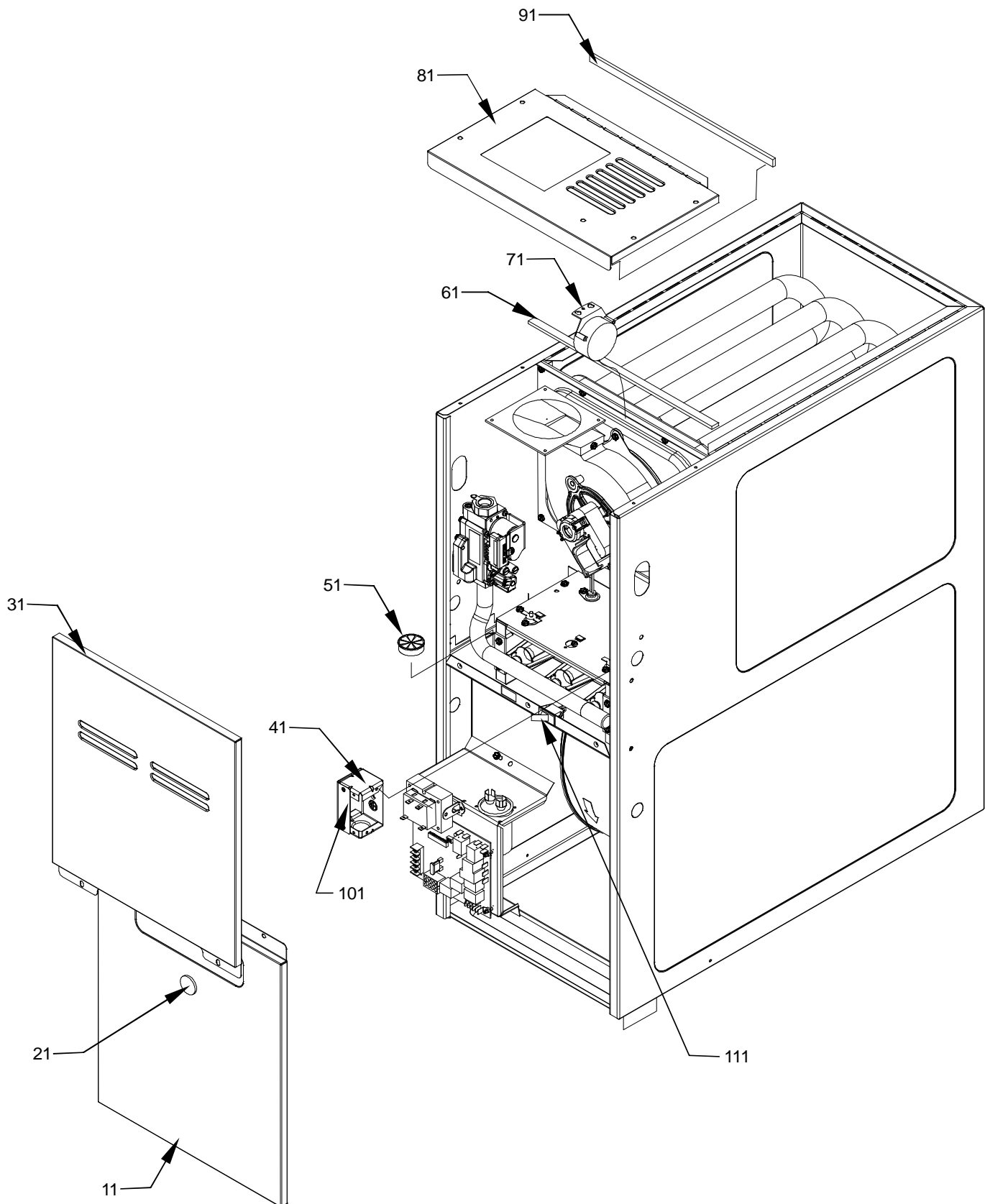
SPECIAL PARTS

0161F00007 GOODMAN NAMEPLATE

Expanded Model Nomenclature

M1 - GMVC80604BNAA
M2 - GMVC80604BNBA
M3 - GMVC80604BNBB
M4 - GMVC80604BNBC
M5 - GMVC80604BXAA
M6 - GMVC80604BXBA
M7 - GMVC80604BXBB
M8 - GMVC80604BXBC
M9 - GMVC80805CNAA
M10 - GMVC80805CNBA
M11 - GMVC80805CNBB
M12 - GMVC80805CNBC
M13 - GMVC80805CXAA
M14 - GMVC80805CXBA
M15 - GMVC80805CXBB
M16 - GMVC80805CXBC
M17 - GMVC81005CNAA
M18 - GMVC81005CNBA
M19 - GMVC81005CNBB
M20 - GMVC81005CNBC
M21 - GMVC81005CXAA
M22 - GMVC81005CXBA
M23 - GMVC81005CXBB
M24 - GMVC81005CXBC

Cabinet



Cabinet

Ref. Part
No: No:

Description:

Ref. Part
No: No:

Description:

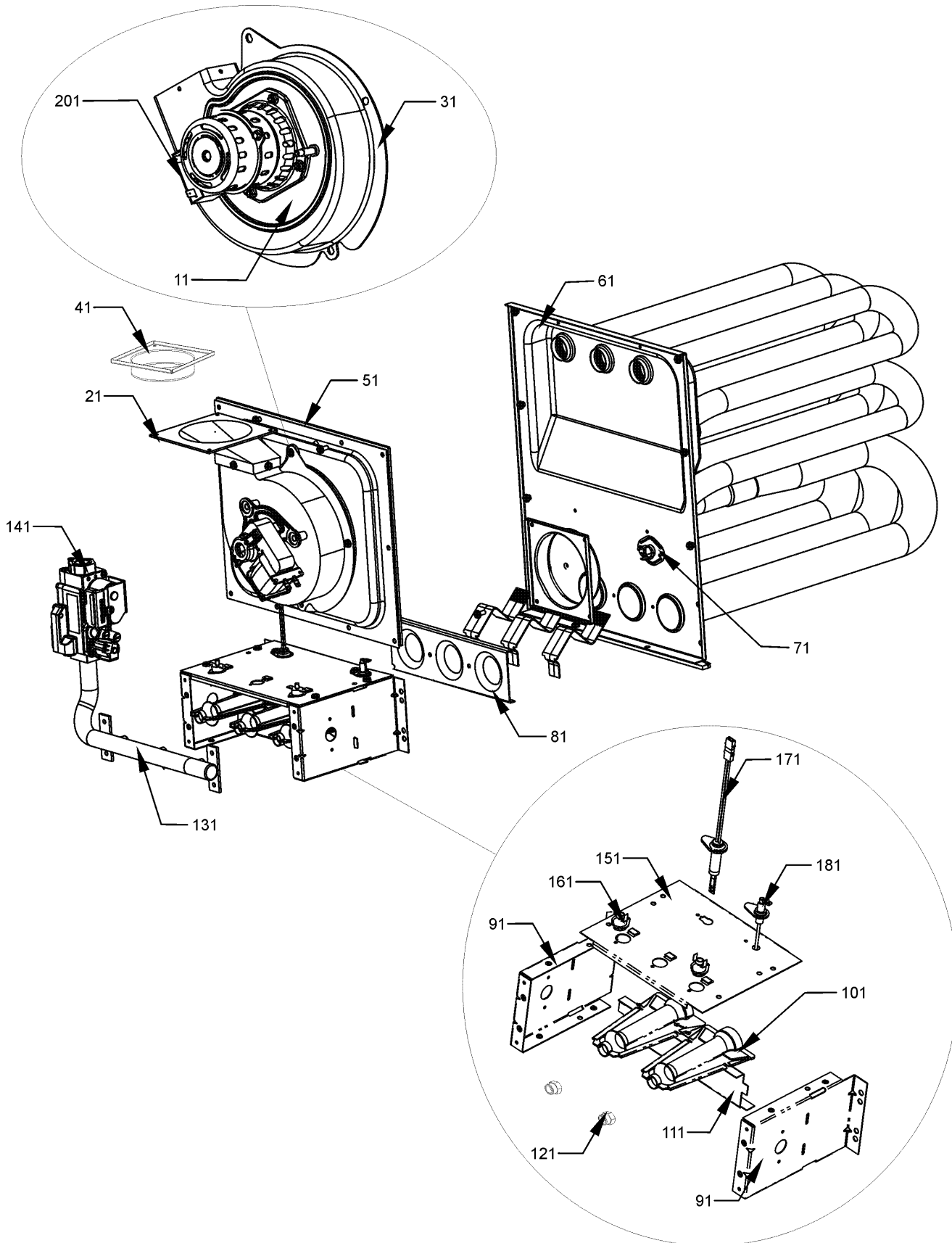
Image 1:

11	0121F00123DG	BLOWER ACCESS DOOR 17.5" (M1, M2, M3, M4, M5, M6, M7, M8)
11	0121F00124DG	BLOWER ACCESS DOOR 21" (M9, M10, M11, M12, M13, M14, M15, M16, M17, M18, M19, M20, M21, M22, M23, M24)
21	B1392139	VIEW PORT BUSHING-BLOWER DOOR
31	0121F00119DG	CONTROL ACCESS DOOR 17.5" (M1, M2, M3, M4, M5, M6, M7, M8)
31	0121F00120DG	CONTROL ACCESS DOOR 21" (M9, M10, M11, M12, M13, M14, M15, M16, M17, M18, M19, M20, M21, M22, M23, M24)
41	4014502	J-BOX
51	B1392147	UNIVERSAL BUSHING WITH SLICE
61	B13926112	SEAL STRIP, 1/8 X 1/2 X 17.5 (M1, M2, M3, M4, M5, M6, M7, M8)
61	B13926113	SEAL STRIP, 1/8 X 1/2 X 21 (M9, M10, M11, M12, M13, M14, M15, M16, M17, M18, M19, M20, M21, M22, M23, M24)
71	0130F00049	AIR PRESSURE SWITCH (M1, M2, M3, M4, M5, M6, M7, M8, M10, M11, M12, M14, M15, M16)
71	0130F00050	AIR PRESSURE SWITCH (M9, M13, M17, M21)
71	B1370210	PRESSURE SWITCH, PINK (M18, M19, M20, M22, M23, M24)
81	0121F00142DG	TOP 17.5" (M1, M2, M3, M4, M5, M6, M7, M8)
81	0121F00143DG	TOP 21" (M9, M10, M11, M12, M13, M14, M15, M16, M17, M18, M19, M20, M21, M22, M23, M24)
91	B13926111	SEAL STRIP, 1/8 X 1/2 X 14
101	4015502	J-BOX COVER
111	10690402	INTERLOCK SWITCH
NS	0161F00007	GOODMAN NAMEPLATE
NS	0259F00062	INDUCER HARNESS ASSY
NS	0259F00063	WIRE HARNESS ASSY
NS	0259F00075	WIRE HARNESS ASSY (M1, M2, M5, M6, M9, M10, M13, M14, M17, M18, M21, M22)
NS	0259F00081	WIRE HARNESS ASSY (M3, M4, M7, M8, M11, M12, M15, M16, M19, M20, M23, M24)

Expanded Model Nomenclature

M1 - GMVC80604BNAA
M2 - GMVC80604BNBA
M3 - GMVC80604BNBB
M4 - GMVC80604BNBC
M5 - GMVC80604BXAA
M6 - GMVC80604BXBA
M7 - GMVC80604BXBB
M8 - GMVC80604BXBC
M9 - GMVC80805CNAA
M10 - GMVC80805CNBA
M11 - GMVC80805CNBB
M12 - GMVC80805CNBC
M13 - GMVC80805CXAA
M14 - GMVC80805CXBA
M15 - GMVC80805CXBB
M16 - GMVC80805CXBC
M17 - GMVC81005CNAA
M18 - GMVC81005CNBA
M19 - GMVC81005CNBB
M20 - GMVC81005CNBC
M21 - GMVC81005CXAA
M22 - GMVC81005CXBA
M23 - GMVC81005CXBB
M24 - GMVC81005CXBC

Heat Exchanger Assembly



Heat Exchanger Assembly

Ref. Part

No: No:

Description:

Ref. Part

No: No:

Description:

Image 1:

11	0131M00003P	VENT MOTOR, 2-STAGE
21	0128F00006	CHIMNEY TRANSITION BOTTOM
31	0154F00004	VENT MOTOR GASKET 17.5" (M1, M2, M3, M4, M5, M6, M7, M8)
31	0154F00005	VENT MOTOR GASKET 21" (M9, M10, M11, M12, M13, M14, M15, M16, M17, M18, M19, M20, M21, M22, M23, M24)
41	4023500	CHIMNEY TRANSITION TOP
51	0121F00332	17.5" COLLECTOR BOX 1.375" DIA (M2, M3, M4, M6, M7, M8)
51	0121F00333	21" COLLECTOR BOX 1.75" DIA (M18, M19, M20, M22, M23, M24)
51	0121F00336	21" FLUE COLLECTOR BOX 1.50" (M10, M11, M12, M14, M15, M16)
51	0121F00216	COLLECTOR BOX (M1, M5)
51	0121F00217	COLLECTOR BOX (M9, M13, M17, M21)
61	0270F00903	HEAT EXCHANGER ASSY (M17, M18, M19, M20, M21, M22, M23, M24)
61	0270F00929	HEAT EXCHANGER ASSY (M1, M2, M3, M4, M5, M6, M7, M8)
61	0270F00930	HEAT EXCHANGER ASSY (M9, M10, M11, M12, M13, M14, M15, M16)
71	20162904	*PRIMARY LIMIT-TEMPERATURE CONTROL (M17, M21) *Refer to service bulletin SF-054
71	20162903	PRIMARY LIMIT - BLUE (M1, M5)
71	0130M00063	PRIMARY LIMIT - GOLD 140° (M2, M3, M4, M6, M7, M8, M9, M10, M11, M12, M13, M14, M15, M16)
71	20162905	PRIMARY LIMIT-YELLOW (M18, M19, M20, M22, M23, M24)
81	4028001	ORIFICE SHIELD 3 CELL (M1, M2, M3, M4, M5)
81	4028002	ORIFICE SHIELD 4 CELL (M6, M7, M8, M9, M10, M11, M12, M13, M14, M15, M16)
81	4028003	ORIFICE SHIELD 5 CELL (M17, M18, M19, M20, M21, M22, M23, M24)
91	0121F00146	BURNER BOX SIDE (QTY 2)
101	B4022700	INSHOT BURNER ASSY 3" (QTY 3)
111	0121F00168	BURNER BRACKET 3B (M1, M2, M3, M4, M5, M6, M7, M8)
111	0121F00169	BURNER BRACKET 4B (M9, M10, M11, M12, M13, M14, M15, M16)
111	0121F00170	BURNER BRACKET 5B (M17, M18, M19, M20, M21, M22, M23, M24)
121	0163F00018	ORIFICE (M1, M5, M9, M13, M17, M21)
121	10716005	ORIFICE (M2, M3, M4, M6, M7, M8, M10, M11, M12, M14, M15, M16, M18, M19, M20, M22, M23, M24)
131	0120F00007	MANIFOLD (M1, M2, M3, M4, M5, M6, M7, M8)
131	0120F00008	MANIFOLD (M9, M10, M11, M12, M13, M14, M15, M16)
131	0120F00009	MANIFOLD (M17, M18, M19, M20, M21, M22, M23, M24)
141	0151M00028	VALVE,GAS(HW)VR92
151	0121F00163	BURNER BOX TOP 3 CELL (M1, M2, M3, M4, M5, M6, M7, M8)
151	0121F00164	BURNER BOX TOP 4 CELL (M9, M10, M11, M12, M13, M14, M15, M16)
151	0121F00165	BURNER BOX TOP 5 CELL (M17, M18, M19, M20, M21, M22, M23, M24)
161	10123529	MANUAL RESET R.O.S. LIMIT (QTY 2)
171	0130F00008	IGNITOR-SINI 17 SEC
181	0130F00010	FLAME SENSOR
201	DY6.186.070	VENT MOTOR CAPACITOR

Expanded Model Nomenclature

M1 - GMVC80604BNAA
M2 - GMVC80604BNBA
M3 - GMVC80604BNBB
M4 - GMVC80604BNBC
M5 - GMVC80604BXAA
M6 - GMVC80604BXBA
M7 - GMVC80604BXBB
M8 - GMVC80604BXBC
M9 - GMVC80805CNAA
M10 - GMVC80805CNBA
M11 - GMVC80805CNBB
M12 - GMVC80805CNBC
M13 - GMVC80805CXAA
M14 - GMVC80805CXBA
M15 - GMVC80805CXBB
M16 - GMVC80805CXBC
M17 - GMVC81005CNAA
M18 - GMVC81005CNBA
M19 - GMVC81005CNBB
M20 - GMVC81005CNBC
M21 - GMVC81005CXAA
M22 - GMVC81005CXBA
M23 - GMVC81005CXBB
M24 - GMVC81005CXBC

Blower and Control Panel

Image 1

*If end bells are needed please order the following:

0131M00182 - ½ HP

0131M00183 - ¾ HP

0131M00184 - 1 HP

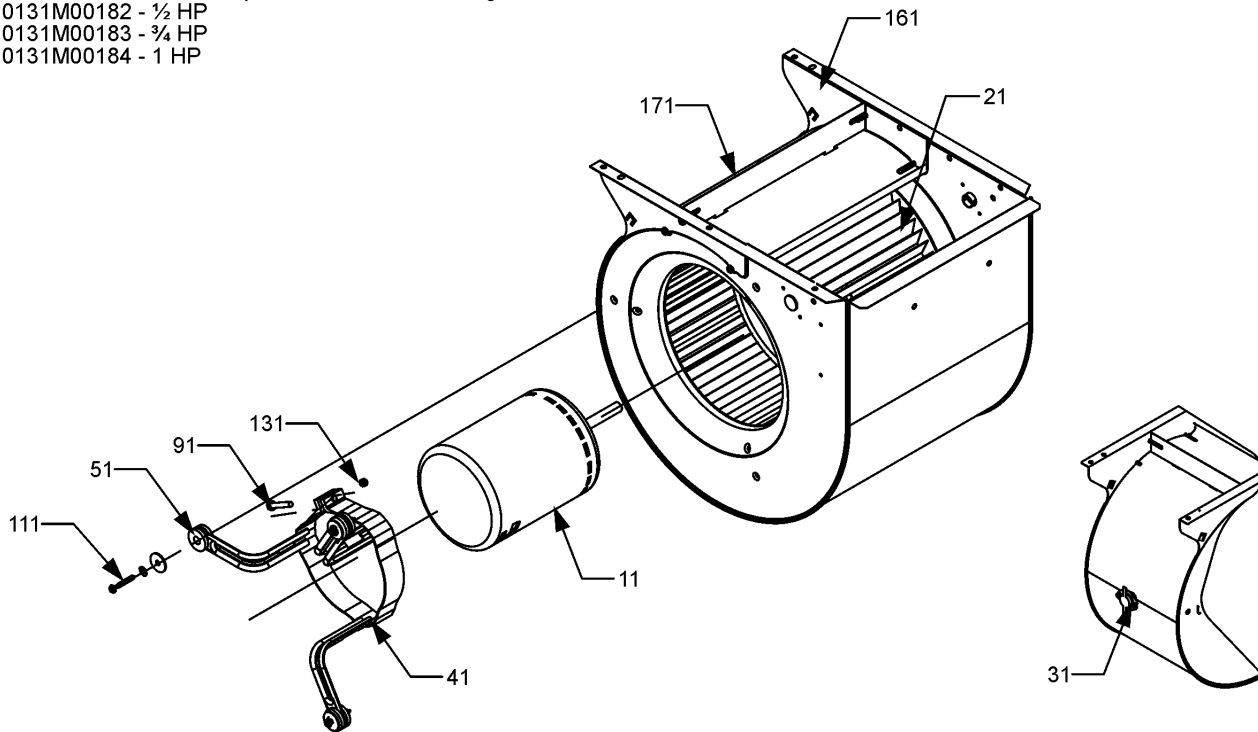
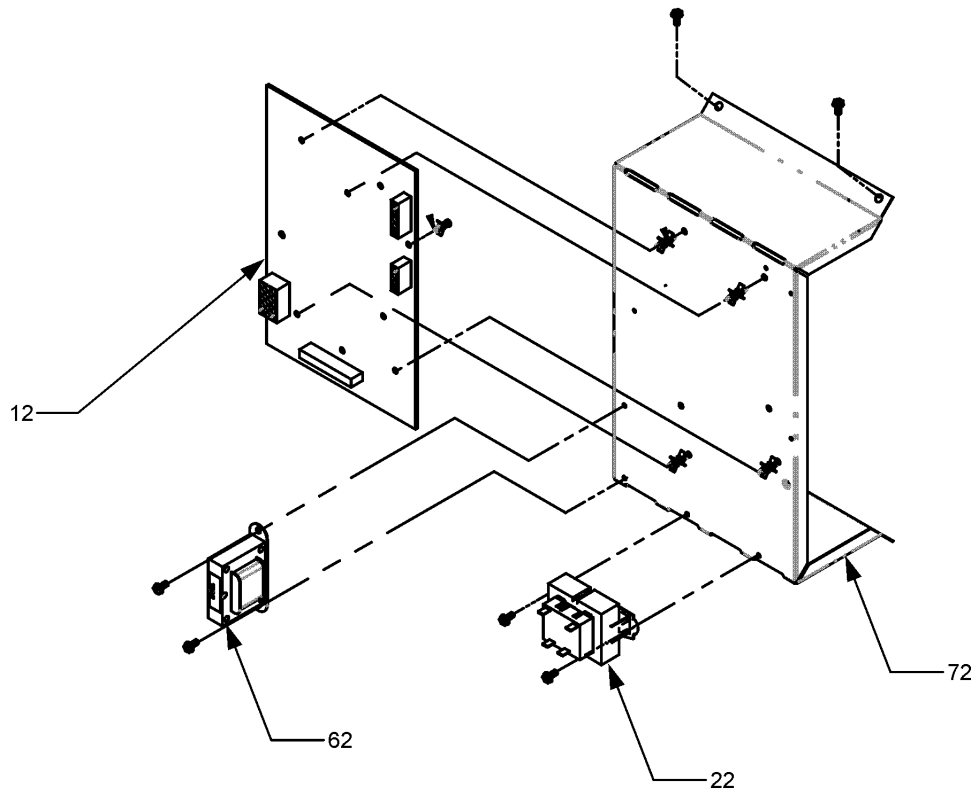


Image 2



Blower and Control Panel

Ref. Part

No: No:

Description:

Ref. Part

No: No:

Description:

Image 1:

11	0131M00271	MOTOR, 3/4 HP, SERIAL ECM
21	B1368047	BLOWER WHEEL 10 X 10 (M9, M10, M11, M12, M13, M14, M15, M16, M17, M18, M19, M20, M21, M22, M23, M24)
21	B1368016	BLOWER WHEEL 10 X 8 (M1, M2, M3, M4, M5, M6, M7, M8)
31	0130F00038	AUX LIMIT - LT BLUE 120°
41	0121M00038	MOTOR MOUNT BAND (M1, M2, M3, M4, M5, M6, M7, M8)
41	0121M00039	MOTOR MOUNT BAND (HEAVY DUTY) (M9, M10, M11, M12, M13, M14, M15, M16, M17, M18, M19, M20, M21, M22, M23, M24)
51	B1376853	MOTOR MOUNT ARM (M1, M2, M3, M4, M5, M6, M7, M8)
51	B1376863	MOTOR MOUNT ARM (HEAVY DUTY) (M9, M10, M11, M12, M13, M14, M15, M16, M17, M18, M19, M20, M21, M22, M23, M24)
91	B1393323	MACHINE SCREW HWH 1/4-20 X 1-1/2 BZ
111	M0250565	TC SCREW 1.25" (QTY 3)
131	B1393800	LOCKNUT, NYLON, INSERT 1/4, 20
161	0271F00111	BLOWER SHELL ASSY (M1, M2, M3, M4, M5, M6, M7, M8)
161	0271F00112	BLOWER SHELL ASSY (M9, M10, M11, M12, M13, M14, M15, M16, M17, M18, M19, M20, M21, M22, M23, M24)
171	764741	BLOWER BLOCK-OFF 10 X 10 (M9, M10, M11, M12, M13, M14, M15, M16, M17, M18, M19, M20, M21, M22, M23, M24)
171	764740	BLOWER BLOCK-OFF 10 X 8 (M1, M2, M3, M4, M5, M6, M7, M8)
NS	0259F00048	HARNESS, CONTROL
NS	0259F00049	HARNESS, POWER

Image 2:

12	PCBKF102	PCB, CONTROL, FURNACE (M1, M2, M5, M6, M9, M10, M13, M14, M17, M18, M21, M22)
12	PCBKF104	PCB, CONTROL, FURNACE (M3, M4, M7, M8, M11, M12, M15, M16, M19, M20, M23, M24)
22	0130M00140	TRANSFORMER 120V TO 24V, 40VA
62	0130M00141	INDUCTOR, 5.9 AMPS (GMPE100-4)
72	0121F00218	PANEL, CONTROL MOUNTING
NS	0130F00215	DATA, FURNACE PCB (M1)
NS	0130F00216	DATA, FURNACE PCB (M9)
NS	0130F00217	DATA, FURNACE PCB (M17)
NS	0130F00218	DATA, FURNACE PCB (M5)
NS	0130F00219	DATA, FURNACE PCB (M13)
NS	0130F00220	DATA, FURNACE PCB (M21)
NS	0130F00233	DATA, FURNACE PCB (M2)
NS	0130F00234	DATA, FURNACE PCB (M10)
NS	0130F00235	DATA, FURNACE PCB (M18)
NS	0130F00236	DATA, FURNACE PCB (M6)
NS	0130F00237	DATA, FURNACE PCB (M14)
NS	0130F00238	DATA, FURNACE PCB (M22)
NS	0130F00264	DATA, FURNACE PCB (M3)
NS	0130F00265	DATA, FURNACE PCB (M7)
NS	0130F00266	DATA, FURNACE PCB (M11)
NS	0130F00267	DATA, FURNACE PCB (M15)
NS	0130F00268	DATA, FURNACE PCB (M19)
NS	0130F00269	DATA, FURNACE PCB (M23)
NS	0130F00415	DATA, FURNACE PCB (M4)
NS	0130F00416	DATA, FURNACE PCB (M8)
NS	0130F00417	DATA, FURNACE PCB (M12)
NS	0130F00418	DATA, FURNACE PCB (M16)
NS	0130F00419	DATA, FURNACE PCB (M20)
NS	0130F00420	DATA, FURNACE PCB (M24)

Expanded Model Nomenclature

M1 - GMVC80604BNAA
M2 - GMVC80604BNBA
M3 - GMVC80604BNBB
M4 - GMVC80604BNBC
M5 - GMVC80604BXAA
M6 - GMVC80604BXBA
M7 - GMVC80604BXBB
M8 - GMVC80604BXBC
M9 - GMVC80805CNAA
M10 - GMVC80805CNBA
M11 - GMVC80805CNBB
M12 - GMVC80805CNBC
M13 - GMVC80805CXAA
M14 - GMVC80805CXBA
M15 - GMVC80805CXBB
M16 - GMVC80805CXBC
M17 - GMVC81005CNAA
M18 - GMVC81005CNBA
M19 - GMVC81005CNBB
M20 - GMVC81005CNBC
M21 - GMVC81005CXAA
M22 - GMVC81005CXBA
M23 - GMVC81005CXBB
M24 - GMVC81005CXBC

*If end bells are needed please order the following:

0131M00182 - 1/2 HP
0131M00183 - 3/4 HP
0131M00184 - 1 HP