



REPAIR PARTS

GMVC 96% Two Stage Variable Speed UF Furnace

GMVC960403BNBA
GMVC960403BNBB
GMVC960403BNBC
GMVC960603BNBA
GMVC960603BNBB
GMVC960603BNBC
GMVC960803BNBA
GMVC960803BNBB
GMVC960803BNBC
GMVC960804CNBA
GMVC960804CNBB
GMVC960804CNBC
GMVC961005CNBA
GMVC961005CNBB
GMVC961005DNBA
GMVC961005DNBB
GMVC961205DNBA
GMVC961205DNBB



This manual is to be used by qualified technicians only.

This manual replaces RP-G2315A.

© 2018 , 2020 - 2021 Goodman Manufacturing Company, L.P. ♦ 5151 San Felipe St, Suite 500 ♦ Houston, TX 77056

Important Information

Index

Functional Parts List	3
Illustration and Parts	4 - 11

Views shown are for parts illustrations only, not servicing procedures.

Text Codes:

AR - As Required

NA - Not Available

NS - Not Shown

00000000 - See Note

QTY - Quantity Example (QTY 3) (If Quantity not shown, Quantity = 1)

M - Model Example (M1) (If M Code not shown, then part is used on all Models)

Expanded Model Nomenclature:

Example M1 - Model#1 M2 - Model#2 M3 - Model#3

Goodman Manufacturing Company, L.P. is not responsible for personal injury or property damage resulting from improper service. Review all service information before beginning repairs.

Warranty service must be performed by an authorized technician, using authorized factory parts. If service is required after the warranty expires, Goodman Manufacturing Company, L.P. also recommends contacting an authorized technician and using authorized factory parts.

Goodman Manufacturing Company, L.P. reserves the right to discontinue, or change at any time, specifications or designs without notice or without incurring obligations.

For assistance within the U.S.A. contact:

Homeowner Support

Goodman Manufacturing Company, L.P.

19001 Kermier Road

Waller, Texas 77484

877-254-4729-Telephone

713-863-2382-Facsimile

For assistance outside the U.S.A. contact:

International Division

Goodman Manufacturing Company, L.P.

19001 Kermier Road

Waller, Texas 77484

713-861-2500-Telephone

713-863-2382-Facsimile

Functional Parts

Part

No: Description:

		Expanded Model Nomenclature
20162904	*PRIMARY LIMIT-TEMPERATURE CONTROL (M1, M2, M3, M7, M8, M9, M10, M11, M12)	M1 - GMVC960403BNBA
0130F00038	AUX LIMIT - LT BLUE 120° (QTY 2)	M2 - GMVC960403BNBB
SHARED DATA	Available thru CoolCloud HVAC app.	M3 - GMVC960403BNBC
0163F00017	BECKETT BURNER (QTY 2)	M4 - GMVC960603BNBA
0271F00181	BLOWER HSG ASSY (M1, M2, M3)	M5 - GMVC960603BNBB
0271F00161	BLOWER SHELL & WHEEL ASSY (M10, M11, M12, M13, M14)	M6 - GMVC960603BNBC
0271F00163	BLOWER SHELL & WHEEL ASSY (M15, M16, M17, M18)	M7 - GMVC960803BNBA
0271F00159	BLOWER SHELL & WHEEL ASSY (M4, M5, M6, M7, M8, M9)	M8 - GMVC960803BNBB
0130F00010	FLAME SENSOR	M9 - GMVC960803BNBC
0151M00027	GAS VALVE	M10 - GMVC960804CNBA
0257F00239	HEAT EXCHANGER ASSY (M7, M8, M9)	M11 - GMVC960804CNBB
0257F00333	HEAT EXCHANGER ASSY (M17, M18)	M12 - GMVC960804CNBC
0257F00240	HEAT EXCHANGER ASSY (M10, M11, M12)	M13 - GMVC961005CNBA
0257F00374	HEAT EXCHANGER ASSY (M4, M5, M6)	M14 - GMVC961005CNBB
0257F00236	HEAT EXCHANGER ASSY (M1, M2, M3)	M15 - GMVC961005DNBA
0257F00280	HEAT EXCHANGER ASSY (M13, M14)	M16 - GMVC961005DNBB
0257F00440	HEAT EXCHANGER ASSY. (M15, M16)	M17 - GMVC961205DNBA
0130F00008	IGNITOR-SINI 17 SEC	M18 - GMVC961205DNBB
0130M00141	INDUCTOR, 5.9 AMPS (M10, M11, M12, M13, M14, M15, M16, M17, M18)	
0130M00243	INTERLOCK SWITCH	
10123527	MANUAL RESET LIMIT (M15, M16, M17, M18)	
0130F00123	MANUAL RESET LIMIT (M7, M8, M9, M10, M11, M12)	
10123534	MANUAL RESET LIMIT 220°F (M13, M14)	
10123539	MANUAL RESET LIMIT-ORANGE (M1, M2, M3, M4, M5, M6)	
0131M00272	MOTOR, 1 HP, SERIAL ECM (M13, M14, M15, M16, M17, M18)	
0131M01002	MOTOR, 1/2 HP (M3, M6, M9)	
0131M00270	MOTOR, 1/2 HP, SERIAL ECM (M1, M2, M4, M5, M7, M8)	
0131M01003	MOTOR, 3/4 HP (M12)	
0131M00271	MOTOR, 3/4 HP, SERIAL ECM (M10, M11)	
0171M00002	MOTOR-ID, BLOWER	
PCBKF107	PCB, CONTROL BOARD (M1, M4, M7, M10, M13, M15, M17)	
PCBKF109	PCB, CONTROL BOARD (M2, M3, M5, M6, M8, M9, M11, M12, M14, M16, M18)	
0130F00443	PRESSURE SWITCH (M15, M16, M17, M18)	
0130F00436	PRESSURE SWITCH (M7, M8, M9, M10, M11, M12)	
0130F00434	PRESSURE SWITCH (M13, M14)	
0130F00433	PRESSURE SWITCH (M1, M2, M3, M4, M5, M6)	
0130F00485	PRESSURE SWITCH (M1, M2, M3)	
0130F00429	PRESSURE SWITCH (M4, M5, M6, M7, M8, M9, M10, M11, M12, M13, M14, M15, M16, M17, M18)	
0130F00036	PRIMARY LIMIT - PINK 180° (M15, M16, M17, M18)	
20162906	PRIMARY LIMIT - WHITE (M4, M5, M6, M13, M14)	
0130M00140	TRANSFORMER 120V TO 24V, 40VA	
0150M00043	WHEEL, BLOWER 10X8 (M1, M2, M3)	

SPECIAL PARTS

0161F00086 NAMEPLATE, GOODMAN

Cabinet Assembly

IMAGE 1

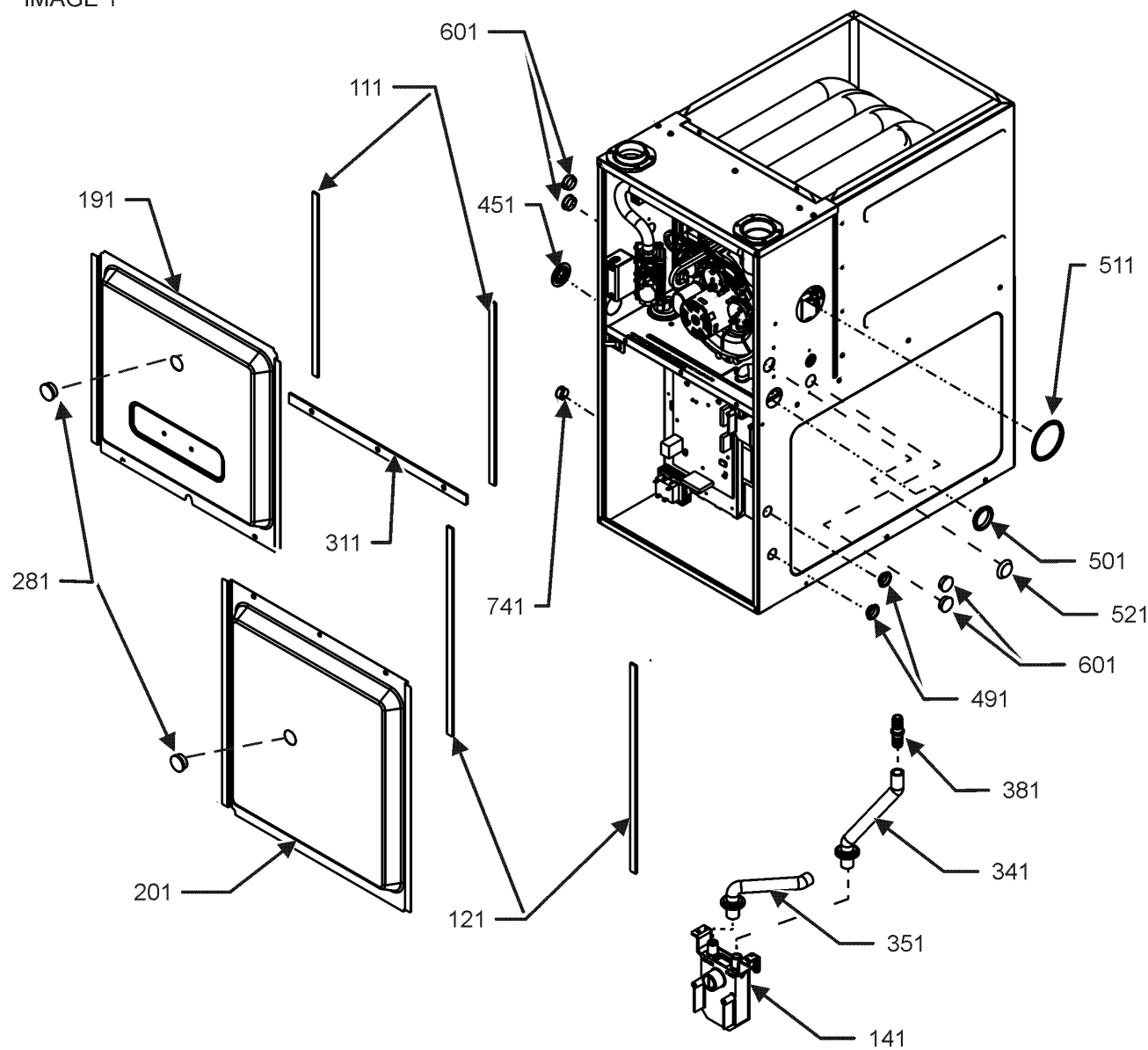
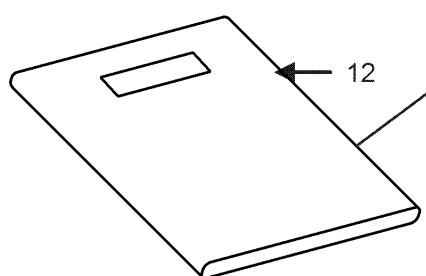
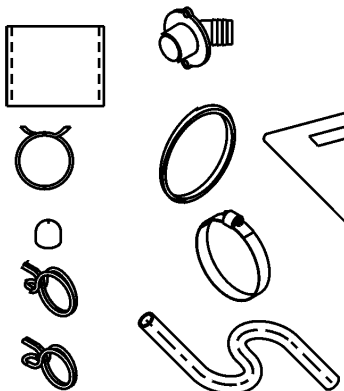


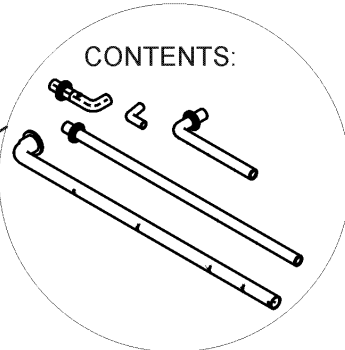
IMAGE 2



CONTENTS:



CONTENTS:



Cabinet Assembly

Ref. Part

No: No:

Description:

Ref. Part

No: No:

Description:

Image 1:

111	0154F00024	GASKET (QTY 2)
121	0154F00025	GASKET (QTY 2)
141	0161F00046	DRAIN TRAP
191	0121F00291DG	DOOR, ACCESS 17.5 PNT (M1, M2, M3, M4, M5, M6, M7, M8, M9)
191	0121F00292DG	DOOR, ACCESS 21 PNT (M10, M11, M12, M13, M14)
191	0121F00293DG	DOOR, ACCESS 24.5 PNT (M15, M16, M17, M18)
201	0121F00288DG	DOOR, BLOWER 17.5 PNT (M1, M2, M3, M4, M5, M6, M7, M8, M9)
201	0121F00289DG	DOOR, BLOWER 21 PNT (M10, M11, M12, M13, M14)
201	0121F00290DG	DOOR, BLOWER 24.5 PNT (M15, M16, M17, M18)
281	B1392139	VIEW PORT BUSHING-BLOWER DOOR (QTY 2)
311	0154F00020	GASKET, DECK (M1, M2, M3, M4, M5, M6, M7, M8, M9)
311	0154F00021	GASKET, DECK (M10, M11, M12, M13, M14)
311	0154F00022	GASKET, DECK (M15, M16, M17, M18)
341	0164F00017	HOSE-ELBOW/TRAP
351	0164F00006	HOSE, COVER/TRAP (M17, M18)
351	0164F00024	HOSE, COVER/TRAP (M1, M2, M3, M4, M5, M6, M7, M8, M9, M10, M11, M12, M13, M14, M15, M16)
381	0161F00047	COUPLING, HOSE BARBED
451	M0501301	PIPE GROMMET
491	M0570808	BUTTON PLUG (QTY 3)
501	M0570806	BUTTON PLUG
511	M0570807	BUTTON PLUG
521	0161M00027	PLUG, HOLE
601	B1392021	PLASTIC PLUG, 1" (2713-BLK) (QTY 4)
741	B1392104	UNIVERSAL BUSHING UB 875
NS	M0310345	BUTTON PLUG (QTY 2)
NS	0163M00460	CLAMP-HOSE (QTY 2)
NS	0163M00319	HEX NUT-INSERT (QTY 3)
NS	0161F00086	NAMEPLATE, GOODMAN
NS	M0273904	RETAINER-SCREW (QTY 3)
NS	M0209730	SCREW-DECORATIVE (QTY 3)

Image 2:

12	0270F05248	DRAIN KIT ASSY
22	0270F05248	DRAIN KIT ASSY

Expanded Model Nomenclature

M1 - GMVC960403BNBA
M2 - GMVC960403BNBB
M3 - GMVC960403BNBC
M4 - GMVC960603BNBA
M5 - GMVC960603BNBB
M6 - GMVC960603BNBC
M7 - GMVC960803BNBA
M8 - GMVC960803BNBB
M9 - GMVC960803BNBC
M10 - GMVC960804CNBA
M11 - GMVC960804CNBB
M12 - GMVC960804CNBC
M13 - GMVC961005CNBA
M14 - GMVC961005CNBB
M15 - GMVC961005DNBA
M16 - GMVC961005DNBB
M17 - GMVC961205DNBA
M18 - GMVC961205DNBB

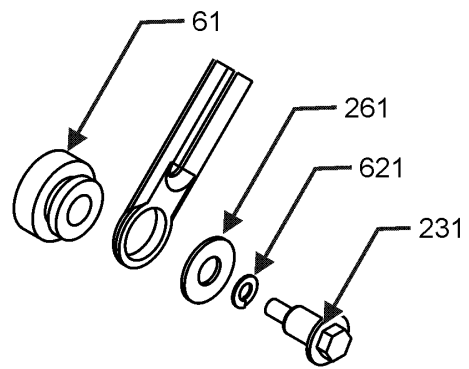
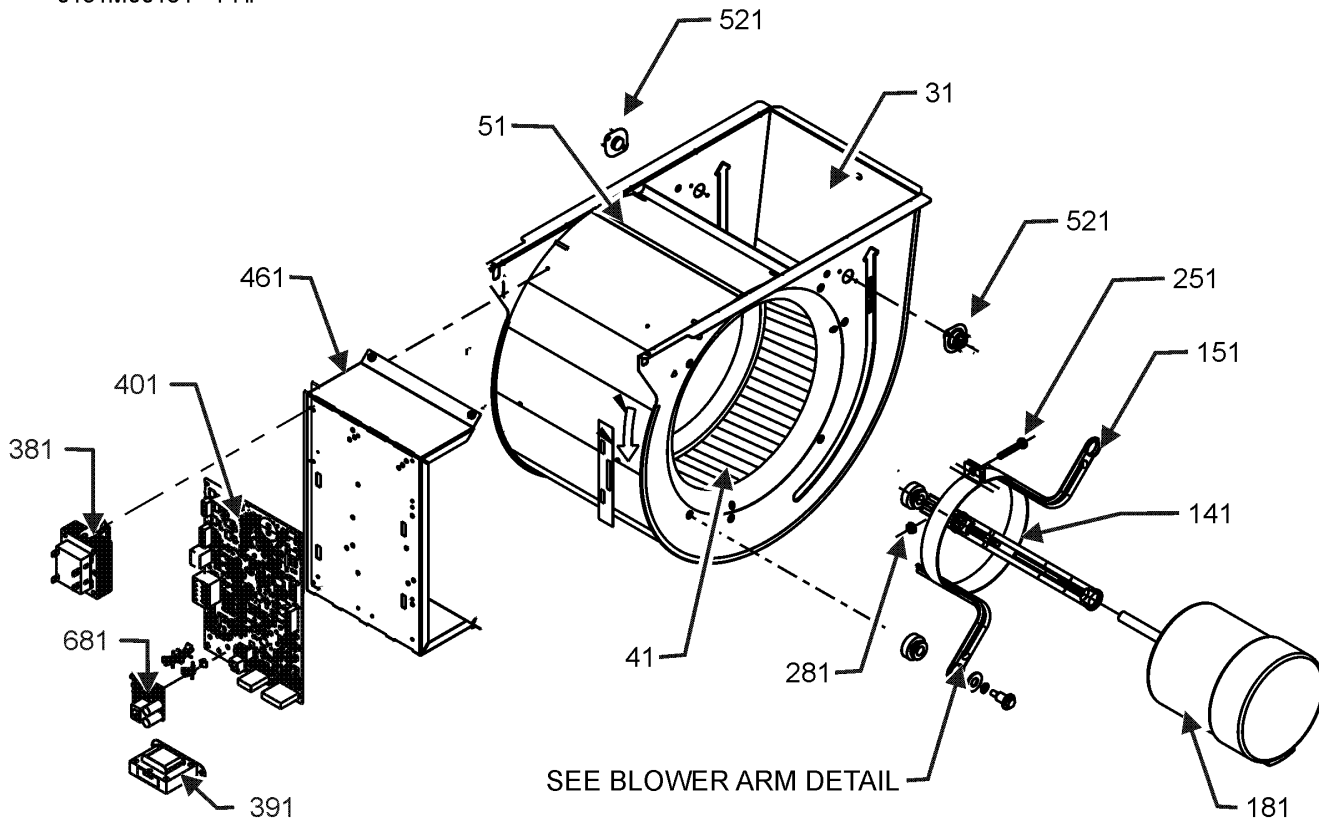
Blower Assembly

*If end bells are needed please order the following:

0131M00182 - 1/2 HP

0131M00183 - 3/4 HP

0131M00184 - 1 HP

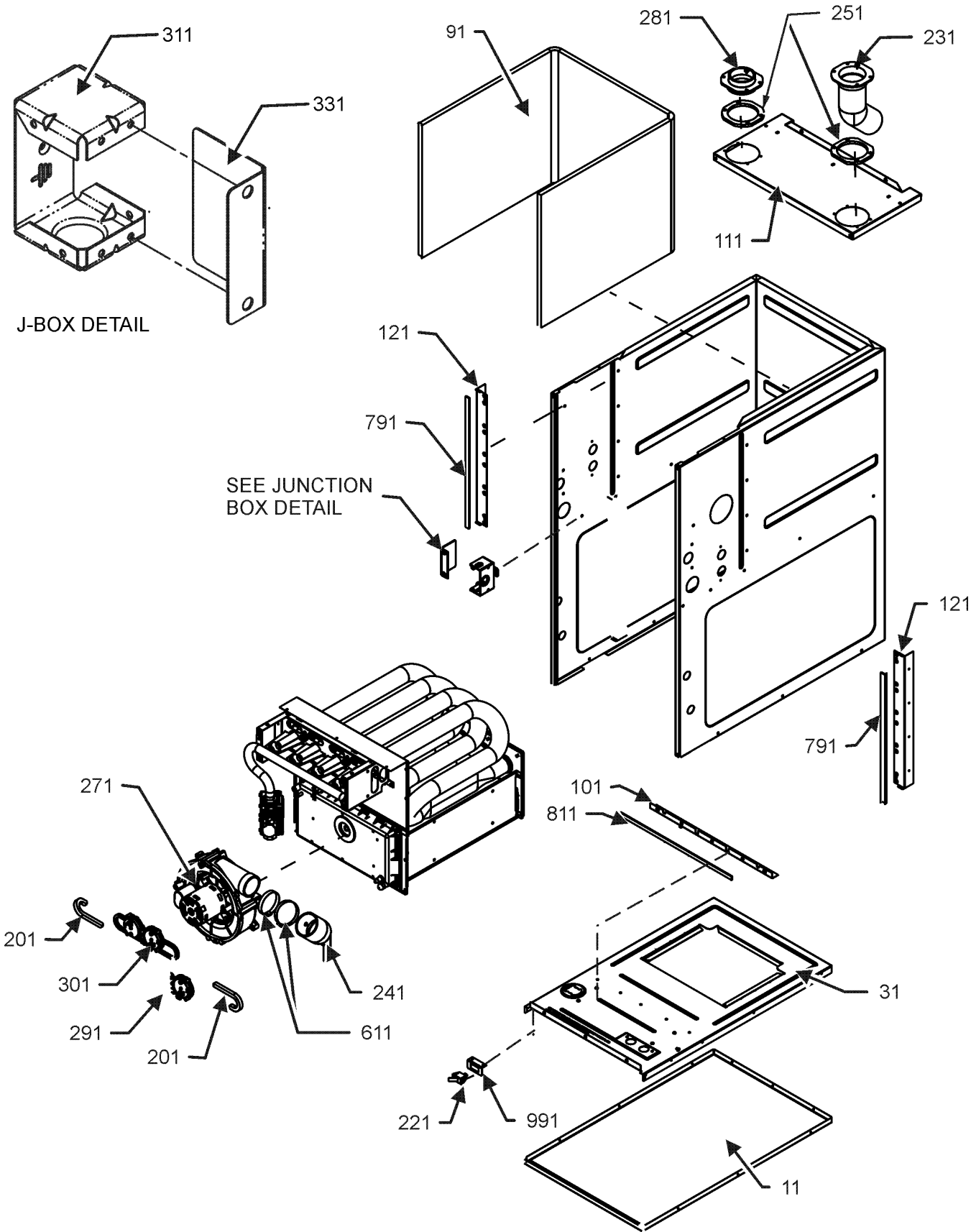


BLOWER ARM DETAIL

Blower Assembly

Ref. Part No:	Description:		Ref. Part No:	Description:	
Image 1:			Image 1:		
31	0271F00181	BLOWER HSG ASSY (M1, M2, M3)	621	B1392820	WASHER, SPLIT LOCK 1/4 BZ (M10, M11, M12, M13, M14, M15, M16, M17, M18)
31	0271F00159	BLOWER SHELL & WHEEL ASSY (M4, M5, M6, M7, M8, M9)	681	PCBCM100	PCB CONTROL (M1, M4, M7, M10, M13, M15, M17)
31	0271F00161	BLOWER SHELL & WHEEL ASSY (M10, M11, M12, M13, M14)	NS	SHARED DATA	Av ailable thru CoolCloud HVAC app.
31	0271F00163	BLOWER SHELL & WHEEL ASSY (M15, M16, M17, M18)	NS	0159F00083	CABLE, RJ12 (M1, M4, M7, M10, M13, M15, M17)
41	0150M00043	WHEEL, BLOWER 10X8 (M1, M2, M3)	NS	0259F00040	CONTROL HARNESS
51	764740	BLOWER BLOCK-OFF 10 X 8 (M1, M2, M3)	NS	B1392021	PLASTIC PLUG, 1" (2713-BLK) (QTY 4)
61	A4002702	BLOWER MOTOR GROMMET (M10, M11, M12, M13, M14, M15, M16, M17, M18)	NS	0259F00041	POWER HARNESS HIGH VOLTAGE
141	0121M00038	MOTOR MOUNT BAND (M1, M2, M3, M4, M5, M6, M7, M8, M9)	NS	0259F00024	WIRE HARNESS-BLOWER
141	10441601	MOTOR MOUNT BAND (M10, M11, M12, M13, M14, M15, M16, M17, M18)	Expanded Model Nomenclature		
151	10441501	MOTOR MOUNT ARM (M10, M11, M12, M13, M14, M15, M16, M17, M18)	M1 - GMVC960403BNBA		
151	B1376857	MOTOR MOUNT ARM (M1, M2, M3, M4, M5, M6, M7, M8, M9)	M2 - GMVC960403BNBB		
181	0131M00272	MOTOR, 1 HP, SERIAL ECM (M13, M14, M15, M16, M17, M18)	M3 - GMVC960403BNBC		
181	0131M01002	MOTOR, 1/2 HP (M3, M6, M9)	M4 - GMVC960603BNBA		
181	0131M00270	MOTOR, 1/2 HP, SERIAL ECM (M1, M2, M4, M5, M7, M8)	M5 - GMVC960603BNBB		
181	0131M01003	MOTOR, 3/4 HP (M12)	M6 - GMVC960603BNBC		
181	0131M00271	MOTOR, 3/4 HP, SERIAL ECM (M10, M11)	M7 - GMVC960803BNBA		
231	0163F00028	SCREW (M10, M11, M12, M13, M14, M15, M16, M17, M18)	M8 - GMVC960803BNBB		
231	M0250565	TC SCREW 1.25" (M1, M2, M3, M4, M5, M6, M7, M8, M9)	M9 - GMVC960803BNBC		
251	M0267144	MACHINE SCREW (M10, M11, M13, M14, M15, M16, M17, M18)	M10 - GMVC960804CNBA		
251	B1393323	MACHINE SCREW HWH 1/4-20 X 1-1/2 BZ (M1, M2, M3, M4, M5, M6, M7, M8, M9, M12)	M11 - GMVC960804CNBB		
261	B1392918	WASHER, FLAT 1/4 ID X 1 OD (M1, M2, M3, M4, M5, M6, M7, M8, M9)	M12 - GMVC960804CNBC		
261	M0274008	WASHER-FLAT (M10, M11, M12, M13, M14, M15, M16, M17, M18)	M13 - GMVC961005CNBA		
281	M0282015	KEPS NUT (M10, M11, M13, M14, M15, M16, M17, M18)	M14 - GMVC961005CNBB		
281	B1393800	LOCKNUT, NYLON, INSERT 1/4, 20 (M1, M2, M3, M4, M5, M6, M7, M8, M9, M12)	M15 - GMVC961005DNBA		
381	0130M00140	TRANSFORMER 120V TO 24V, 40VA	M16 - GMVC961005DNBB		
391	0130M00141	INDUCTOR, 5.9 AMPS (M10, M11, M12, M13, M14, M15, M16, M17, M18)	M17 - GMVC961205DNBA		
401	PCBKF107	PCB, CONTROL BOARD (M1, M4, M7, M10, M13, M15, M17)	M18 - GMVC961205DNBB		
401	PCBKF109	PCB, CONTROL BOARD (M2, M3, M5, M6, M8, M9, M11, M12, M14, M16, M18)	*If end bells are needed please order the follow ing:		
461	0121F00464	MOUNTING PLATE-CONTROLS	0131M00182 - 1/2 HP		
521	0130F00038	AUX LIMIT - LT BLUE 120° (QTY 2)	0131M00183 - 3/4 HP		
			0131M00184 - 1 HP		

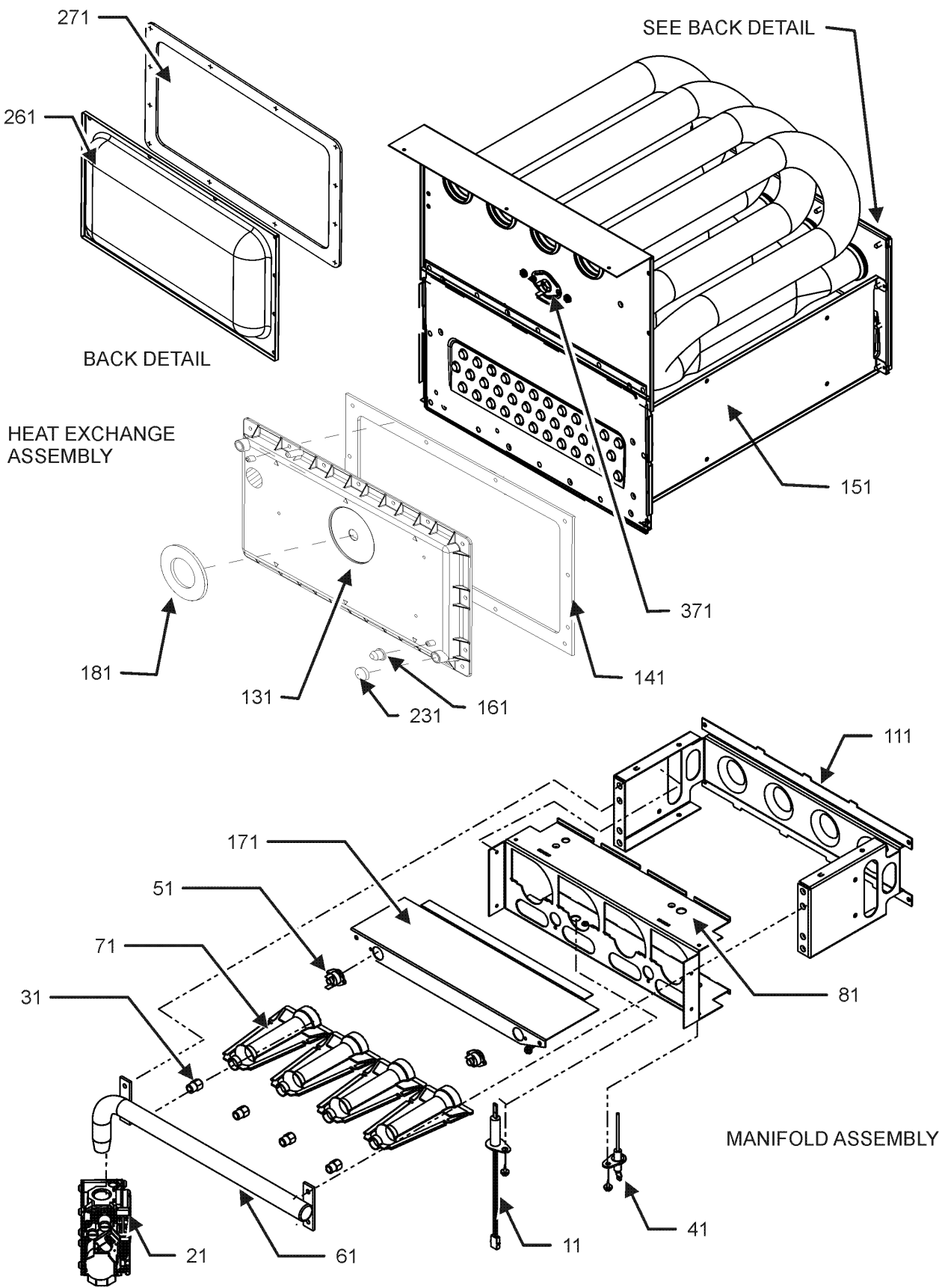
Chassis Assembly



Chassis Assembly

Ref. Part No: No:	Description:	Ref. Part No: No:	Description:
Image 1:		Expanded Model Nomenclature	
11	0121F00530DG	BASEPAN, 17.5 PNT (M1, M2, M3, M4, M5, M6, M7, M8, M9)	M1 - GMVC960403BNBA M2 - GMVC960403BNBB M3 - GMVC960403BNBC M4 - GMVC960603BNBA M5 - GMVC960603BNBB M6 - GMVC960603BNBC M7 - GMVC960803BNBA M8 - GMVC960803BNBB M9 - GMVC960803BNBC
11	0121F00531DG	BASEPAN, 21 PNT (M10, M11, M12, M13, M14)	M10 - GMVC960804CNBA M11 - GMVC960804CNBB M12 - GMVC960804CNBC
11	0121F00532DG	BASEPAN, 24.5 PNT (M15, M16, M17, M18)	M13 - GMVC961005CNBA M14 - GMVC961005CNBB
31	0121F00533	DECK-BLOWER 17.5" (M1, M2, M3, M4, M5, M6, M7, M8, M9)	M15 - GMVC961005DNBA M16 - GMVC961005DNBB
31	0121F00534	DECK-BLOWER 21" (M10, M11, M12, M13, M14)	M17 - GMVC961205DNBA M18 - GMVC961205DNBB
31	0121F00535	DECK-BLOWER 24.5" (M15, M16, M17, M18)	
91	0160F00015	INSULATION, HT EXCHANGER 17.5" (M1, M2, M3, M4, M5, M6, M7, M8, M9)	
91	0160F00016	INSULATION, HT EXCHANGER 21" (M10, M11, M12, M13, M14)	
91	0160F00017	INSULATION, HT EXCHANGER 24.5" (M15, M16, M17, M18)	
101	0121F00314	ANGLE, DECK (M1, M2, M3, M4, M5, M6, M7, M8, M9)	
101	0121F00315	ANGLE, DECK (M10, M11, M12, M13, M14)	
101	0121F00316	ANGLE, DECK (M15, M16, M17, M18)	
111	0121F00279DG	PAINTED TOP, FURNACE 17.5 (M1, M2, M3, M4, M5, M6, M7, M8, M9)	
111	0121F00280DG	PAINTED TOP, FURNACE 21 (M10, M11, M12, M13, M14)	
111	0121F00281DG	PAINTED TOP, FURNACE 24.5 (M15, M16, M17, M18)	
121	0121F00313	ANGLE, SIDE (QTY 2)	
201	0164M00115	HOSE- PRESSURE SW 6" (QTY 2)	
221	0130M00243	INTERLOCK SWITCH	
231	0164F00002	FLUE PIPE W/BEND	
241	0164F00025	ELBOW-FLUE,UPFLOW	
251	0154F00041	FRESH AIR GASKET (QTY 2)	
271	0171M00002	MOTOR-ID, BLOWER	
281	0161F00037	COUPLING	
291	0130F00429	PRESSURE SWITCH (M4, M5, M6, M7, M8, M9, M10, M11, M12, M13, M14, M15, M16, M17, M18)	
291	0130F00485	PRESSURE SWITCH (M1, M2, M3)	
301	0130F00433	PRESSURE SWITCH (M1, M2, M3, M4, M5, M6)	
301	0130F00434	PRESSURE SWITCH (M13, M14)	
301	0130F00436	PRESSURE SWITCH (M7, M8, M9, M10, M11, M12)	
301	0130F00443	PRESSURE SWITCH (M15, M16, M17, M18)	
311	0161F00042	JUNCTION BOX PLA	
331	0161F00043	JUNCTION BOX LID	
611	0163M00460	CLAMP HOSE (QTY 2)	
791	0154F00015	GASKET (QTY 2)	
811	0154F00014	GASKET (M1, M2, M3, M4, M5, M6, M7, M8, M9)	
811	0154F00016	GASKET (M10, M11, M12, M13, M14)	
811	20194607	GASKET (M15, M16, M17, M18)	
991	0121F00389	BRACKET, DOOR SWITCH	
NS	0259F00040	CONTROL HARNESS	
NS	M0326804	PLUG-TUBE	
NS	0259F00041	POWER HARNESS HIGH VOLTAGE	
NS	0259F00024	WIRE HARNESS-BLOWER	

Heat Exchange Assembly



Heat Exchange Assembly

Ref. Part No: No:	Description:	Ref. Part No: No:	Description:
Image 1:		Image 1:	
11	0130F00008	IGNITOR-SINI 17 SEC	
21	0151M00027	GAS VALVE	
31	10716005	ORIFICE (QTY 2)	
41	0130F00010	FLAME SENSOR	
51	0130F00123	MANUAL RESET LIMIT (M7, M8, M9, M10, M11,	
51	10123527	MANUAL RESET LIMIT (M15, M16, M17, M18)	
51	10123534	MANUAL RESET LIMIT 220°F (M13, M14)	
51	10123539	MANUAL RESET LIMIT-ORANGE (M1, M2, M3, M4, M5, M6)	
61	0163F00007	MANIFOLD (M1, M2, M3)	
61	0163F00008	MANIFOLD (M4, M5, M6)	
61	0163F00009	MANIFOLD (M10, M11, M12)	
61	0163F00010	MANIFOLD (M13, M14, M15, M16)	
61	0163F00011	MANIFOLD (M17, M18)	
61	0163F00014	MANIFOLD (M7, M8, M9)	
71	0163F00017	BECKETT BURNER (QTY 2)	
81	0121F00456	BRACKET-BURNER 2 (M1, M2, M3)	
81	0121F00455	BRACKET-BURNER 3 (M4, M5, M6)	
81	0121F00454	BRACKET-BURNER 4 (M7, M8, M9, M10, M11, M12)	
81	0121F00453	BRACKET-BURNER 5 (M13, M14, M15, M16)	
81	0121F00451	BRACKET-BURNER 6 (M17, M18)	
111	0121F00469	ORIFICE BRACKET-BURNER 2 (M1, M2, M3)	
111	0121F00468	ORIFICE BRACKET-BURNER 3 (M4, M5, M6)	
111	0121F00467	ORIFICE BRACKET-BURNER 4 (M7, M8, M9, M10, M11, M12)	
111	0121F00466	ORIFICE BRACKET-BURNER 5 (M13, M14, M15, M16)	
111	0121F00465	ORIFICE BRACKET-BURNER 6 (M17, M18)	
131	0161F00022	COVER, FRONT (M7, M8, M9)	
131	0161F00026	COVER, FRONT (M13, M14)	
131	0161F00030	COVER, FRONT (M10, M11, M12)	
131	0161F00053	COVER, FRONT (M1, M2, M3)	
131	0161F00054	COVER, FRONT (M4, M5, M6)	
131	0161F00063	COVER, FRONT (M17, M18)	
131	0161F00084	COVER, FRONT (M15, M16)	
141	0154F00026	GASKET FRONT COVER (M1, M2, M3, M4, M5, M6, M7, M8, M9)	
141	0154F00030	GASKET FRONT COVER (M10, M11, M12, M13, M14)	
141	0154F00034	GASKET FRONT COVER (M15, M16, M17, M18)	
151	0257F00236	HEAT EXCHANGER ASSY (M1, M2, M3)	
151	0257F00239	HEAT EXCHANGER ASSY (M7, M8, M9)	
151	0257F00240	HEAT EXCHANGER ASSY (M10, M11, M12)	
151	0257F00280	HEAT EXCHANGER ASSY (M13, M14)	
151	0257F00333	HEAT EXCHANGER ASSY (M17, M18)	
151	0257F00374	HEAT EXCHANGER ASSY (M4, M5, M6)	
151	0257F00440	HEAT EXCHANGER ASSY. (M15, M16)	
161	M0326804	TUBE PLUG	
171	0121F00539	SHEILD, BURNER (M1, M2, M3)	
171	0121F00540	SHEILD, BURNER (M4, M5, M6)	
171	0121F00541	SHEILD, BURNER (M7, M8, M9, M10, M11, M12)	
171	0121F00542	SHEILD, BURNER (M13, M14, M15, M16)	
171	0121F00543	SHEILD, BURNER (M17, M18)	
181	0154F00043	GASKET ID BLOWER	
231	A1781105	CAP-VINYL .500	
261	0121F00317	COVER, REAR (M1, M2, M3, M4, M5, M6, M7, M8, M9)	
261	0121F00318	COVER, REAR (M10, M11, M12, M13, M14)	
261	0121F00319	COVER, REAR (M15, M16, M17, M18)	
271	0154F00037	GASKET, REAR CVR (M1, M2, M3, M4, M5, M6, M7, M8, M9)	
271	0154F00038	GASKET, REAR CVR (M10, M11, M12, M13, M14)	
271	0154F00039	GASKET, REAR CVR (M15, M16, M17, M18)	
371	20162904	*PRIMARY LIMIT-TEMPERATURE CONTROL (M1, M2, M3, M7, M8, M9, M10, M11, M12)	
371	0130F00036	PRIMARY LIMIT - PINK 180° (M15, M16, M17, M18)	
371	20162906	PRIMARY LIMIT - WHITE (M4, M5, M6, M13, M14)	
NS	0121F00415	AIR FURN BAFFLE	
NS	0121F00585	INSULATION, RETAINER (M15, M16, M17, M18)	
NS	0121F00439	PRIMARY LIMIT-HEAT SHIELD	
NS	0121F00355	SHIELD, COIL (QTY 2)	
		Expanded Model Nomenclature	
		M1 - GMVC960403BNBA	
		M2 - GMVC960403BNBB	
		M3 - GMVC960403BNBC	
		M4 - GMVC960603BNBA	
		M5 - GMVC960603BNBB	
		M6 - GMVC960603BNBC	
		M7 - GMVC960803BNBA	
		M8 - GMVC960803BNBB	
		M9 - GMVC960803BNBC	
		M10 - GMVC960804CNBA	
		M11 - GMVC960804CNBB	
		M12 - GMVC960804CNBC	
		M13 - GMVC961005CNBA	
		M14 - GMVC961005CNBB	
		M15 - GMVC961005DNBA	
		M16 - GMVC961005DNBB	
		M17 - GMVC961205DNBA	
		M18 - GMVC961205DNBB	