

LPLP04

LOW PRESSURE PROPANE KIT

INSTALLATION INSTRUCTIONS

WARNING

Only personnel that have been trained to install, adjust, service or repair (hereinafter, "service") the equipment specified in this manual should service the equipment. The manufacturer will not be responsible for any injury or property damage arising from improper service or service procedures. If you service this unit, you assume responsibility for any injury or property damage which may result. In addition, in jurisdictions that require one or more licenses to service the equipment specified in this manual, only licensed personnel should service the equipment. Improper installation, adjustment, servicing or repair of the equipment specified in this manual, or attempting to install, adjust, service or repair the equipment specified in this manual without proper training may result in product damage, property damage, personal injury or death.

Field Supplied	
1	1/2" x 1-1/2" Nipple
1	1/2" Tee
1	1/2" Pipe (length dependent on model and application)

See figures inside this IO for application needs.

DESCRIPTION

The This kit is designed for use with modulating furnaces equipped with White-Rodgers 36J27 Series Stepper Gas Valves converted to propane gas. The LPLP04 Propane Low Pressure Kit monitors LP gas supply pressure and prevents the furnace gas valve from being energized if the gas supply pressure drops below a level that will support proper combustion.

ATTENTION INSTALLING PERSONNEL

These instructions are intended as a general guide & do not supersede local codes. Prior to actual installation, thoroughly familiarize yourself with this Instruction Manual. Pay special attention to all safety warnings.

RECOGNIZE THIS SYMBOL AS A SAFETY PRECAUTION

1	Propane Low Pressure Switch
1	1/2" x 1/8" Bushing
1	Wiring Diagram
1	Installation Instructions

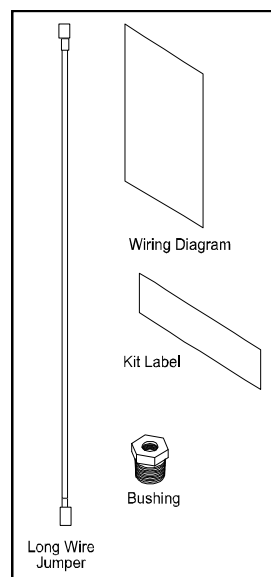


Figure 1

IMPORTANT INFORMATION

This kit provides control over the unit gas valve by routing the gas valve wiring through the supplied pressure switch. For new unit installations, the kit hardware may be fitted to the gas valve while the gas manifold is removed for LP gas orifice conversion. For existing installations, the gas valve line must be disconnected from the gas valve to allow fitting of kit hardware. **Before proceeding, shut off gas supply at manual shutoff and turn off power to unit.**



CAUTION

TO AVOID THE RISK OF PROPERTY DAMAGE, PERSONAL INJURY OR FIRE, SHUT OFF GAS SUPPLY FIRST, THEN DISCONNECT THE ELECTRICAL SUPPLY BEFORE PROCEEDING WITH CONVERSION.

WARNING

HIGH VOLTAGE

DISCONNECT ALL ELECTRICAL POWER AND SHUT OFF GAS SUPPLY BEFORE SERVICING OR INSTALLING. MULTIPLE POWER SOURCES MAY BE PRESENT. FAILURE TO DO SO MAY CAUSE PROPERTY DAMAGE, PERSONAL INJURY OR DEATH.



WARNING

IF THE GAS FURNACE IS INSTALLED IN A BASEMENT, AN EXCAVATED AREA OR A CONFINED SPACE, IT IS STRONGLY RECOMMENDED TO CONTACT A PROPANE SUPPLIER TO INSTALL A GAS DETECTING WARNING DEVICE IN CASE OF A GAS LEAK.

- SINCE PROPANE GAS IS HEAVIER THAN AIR, ANY LEAKING GAS CAN SETTLE IN ANY LOW AREAS OR CONFINED SPACES.
- PROPANE GAS ODORANT MAY FADE, MAKING THE GAS UNDETECTABLE EXCEPT WITH A WARNING DEVICE.

WARNING

IF THE INFORMATION IN THESE INSTRUCTIONS IS NOT FOLLOWED EXACTLY, A FIRE OR EXPLOSION MAY RESULT CAUSING PROPERTY DAMAGE, PERSONAL INJURY OR LOSS OF LIFE.

- DO NOT STORE OR USE GASOLINE OR OTHER FLAMMABLE VAPORS AND LIQUIDS IN THE VICINITY OF THIS OR ANY OTHER APPLIANCE.
- WHAT TO DO IF YOU SMELL GAS:
 - DO NOT TRY TO LIGHT ANY APPLIANCE.
 - DO NOT TOUCH ANY ELECTRICAL SWITCH; DO NOT USE ANY PHONE IN YOUR BUILDING.
 - IMMEDIATELY CALL YOUR GAS SUPPLIER FROM A NEIGHBOR'S PHONE. FOLLOW THE GAS SUPPLIER'S INSTRUCTIONS.
 - IF YOU CANNOT REACH YOUR GAS SUPPLIER, CALL THE FIRE DEPARTMENT.
- INSTALLATION AND SERVICE MUST BE PERFORMED BY A QUALIFIED INSTALLER, SERVICE AGENCY OR THE GAS SUPPLIER.

WARNING

PERSONAL INJURY OR DEATH MAY RESULT FROM IMPROPER INSTALLATION OR MAINTENANCE PERFORMED BY UNTRAINED PERSONNEL. CALL YOUR INSTALLING DEALER OR OTHER QUALIFIED SERVICE COMPANIES TO PERFORM THE INSTALLATION OR MAINTENANCE INSPECTION.

WARNING

TO AVOID PROPERTY DAMAGE, PERSONAL INJURY OR DEATH DUE TO EXPLOSION OR FIRE, INSTALL A GAS DETECTING WARNING DEVICE. SINCE THE ODORANT IN PROPANE GAS CAN BE REDUCED BY IRON OXIDE (RUST), A GAS DETECTING WARNING DEVICE IS THE ONLY RELIABLE METHOD TO DETECT PROPANE GAS LEAKS.

NOTE: To ensure proper operation, install, operate and maintain the unit in accordance with these installation instructions, all local building codes and ordinances. In their absence, follow the latest edition of the National Fuel Gas Code (NFPA 54/ANSI Z223.1), and/or CAN/CSA B149.1 Installation Codes.

NOTE: All threaded connections must be sealed with Teflon tape or pipe dope. Pipe sealant must be approved for use with propane gas.

GAS SUPPLY ON THE RIGHT SIDE

- 1) Install a field supplied 1/2" pipe nipple with an elbow in the gas valve. The nipple must be of appropriate length so that the elbow lines up with the gas line grommets on the sides of the cabinet.
- 2) Install a field supplied 1/2" pipe nipple 8"-12" in length in the elbow (length will vary by cabinet width) Using the correct length nipple will provide adequate clearance from other furnace components to install the gas monitoring pressure switch from the LPLP04 kit.
- 3) Install a tee on the long nipple. The tee must face "up" so that the diaphragm of the gas pressure monitoring switch is in the horizontal position.
- 4) Thread the gas monitoring pressure switch from the kit along with the adapter bushing into the tee.
- 5) Connect gas supply line to tee.
- 6) Perform installation check out procedure (piping leak check, line pressure measurement, manifold pressure adjustment as outlined in the unit installation instructions).

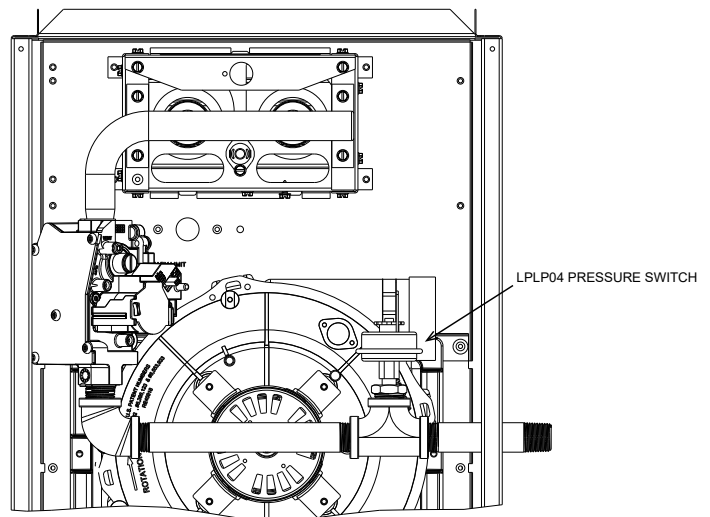


Figure 2

Contact a local propane gas supplier about installing a gas detecting warning device.

GAS SUPPLY ON THE LEFT SIDE

- 1) Install a field supplied ½" pipe nipple and a tee in the gas valve. The nipple must be of appropriate length so that the tee lines up with the gas line grommets on the sides of the cabinet.
- 2) Install a field supplied ½" pipe nipple 8"-12" in length in the tee (length will vary by cabinet width) Using the correct length nipple will provide adequate clearance from other furnace components to install the gas monitoring pressure switch from the LPLP04 kit.
- 3) Install an elbow on the long nipple. The elbow must face "up" so that the diaphragm of the gas pressure monitoring switch is in the horizontal position.
- 4) Thread the gas monitoring pressure switch from the kit along with the adaptor bushing into the elbow.
- 5) Connect gas supply line to tee.
- 6) Perform installation check out procedure (piping leak check, line pressure measurement, manifold pressure adjustment as outlined in the unit installation instructions

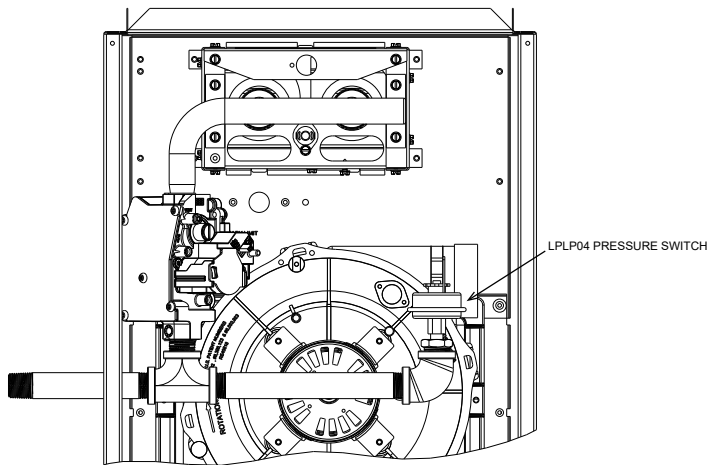


Figure 3

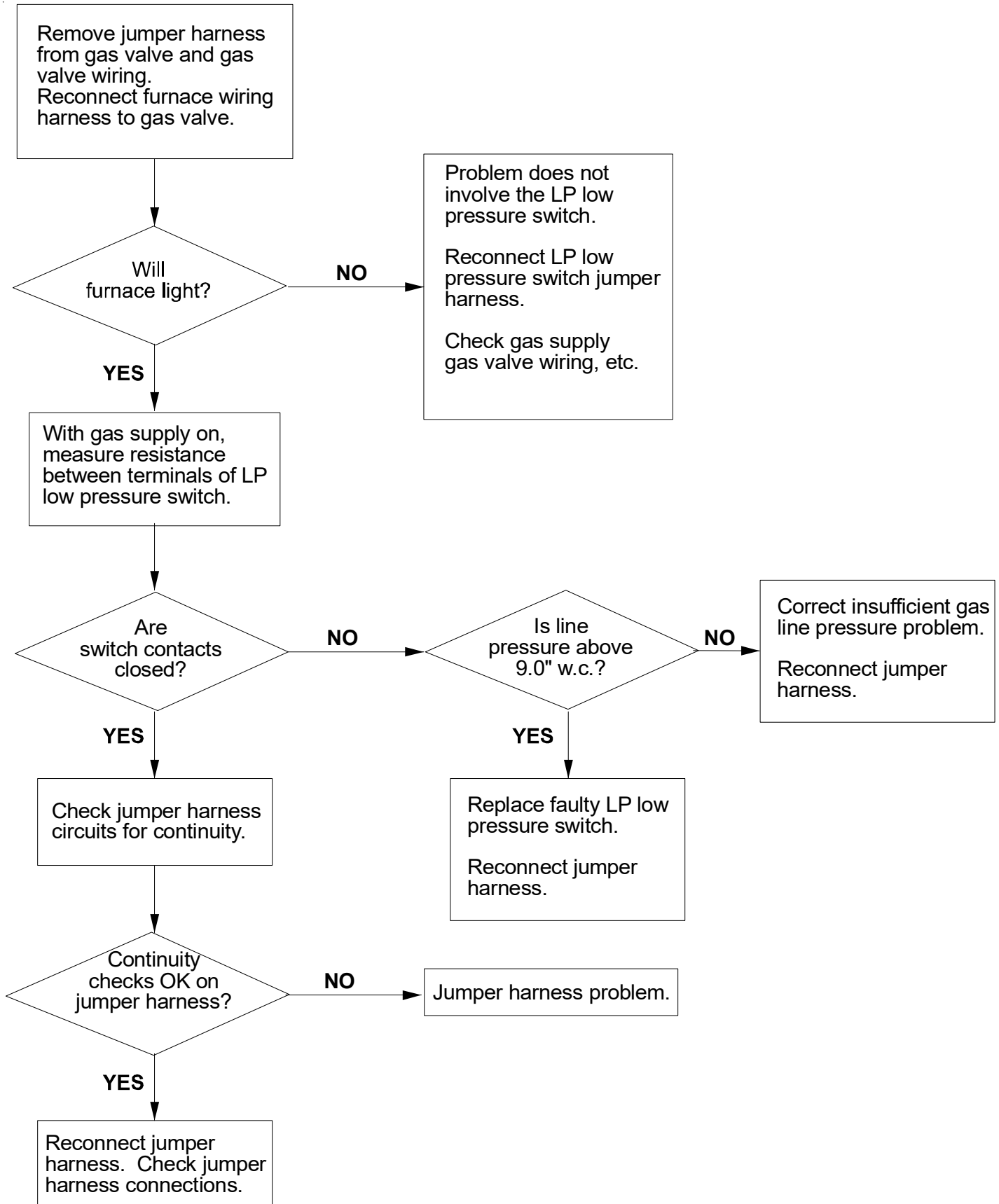
ELECTRICAL CONNECTIONS

- 1) Locate the factory installed collector box pressure switch. This switch is connected to two gray wires; one coming from the main harness, one going to the gas valve
- 2) Locate the gray wire that connects the gas valve to the collector box pressure switch and remove it from the terminal of the collector box pressure switch.
- 3) Connect the gray wire removed in step 2 to the N.O. terminal of the gas monitoring pressure switch from the LPLP04 kit.
- 4) Connect the gray wire from the kit between the "C" terminal of the gas monitoring pressure switch and the collector box pressure switch terminal vacated in step 2.
- 5) Turn ON power to furnace. Verify proper unit operation.
- 6) Remove backing material from kit label. Fold label around jumper harness wire to indicate kit installation.
- 7) Adhere kit wiring diagram adjacent to existing unit wiring diagram.

IMPORTANT NOTE: Secure all wires to avoid their contact with any hot surfaces or moving parts.

TROUBLESHOOTING

If the furnace fails to light after installation of the LP low pressure switch kit, proceed as follows:



THIS PAGE LEFT INTENTIONALLY BLANK

THIS PAGE LEFT INTENTIONALLY BLANK

THIS PAGE LEFT INTENTIONALLY BLANK

CUSTOMER FEEDBACK

We are very interested in all product comments.

Please fill out the feedback form on one of the following links:

Daikin Products: (<https://daikincomfort.com/contact-us>)

Goodman® Brand Products: (<http://www.goodmanmfg.com/about/contact-us>).

Amana® Brand Products: (<http://www.amana-hac.com/about-us/contact-us>).

You can also scan the QR code on the right for the product brand you purchased to be directed to the feedback page.



DAIKIN



GOODMAN® BRAND



AMANA® BRAND

NOTE: SPECIFICATIONS AND PERFORMANCE DATA LISTED HEREIN ARE SUBJECT TO CHANGE WITHOUT NOTICE

Quality Makes the Difference!

All of our systems are designed and manufactured with the same high quality standards regardless of size or efficiency. We have designed these units to significantly reduce the most frequent causes of product failure. They are simple to service and forgiving to operate. We use quality materials and components. Finally, every unit is run tested before it leaves the factory. That's why we know. . . **There's No Better Quality."**

Visit our website at www.daikincomfort.com, www.goodmanmfg.com or www.amana-hac.com for information on:

- Products
- Warranties
- Customer Services
- Parts
- Contractor Programs and Training
- Financing Options

19001 Kermier Rd., Waller, TX 77484

© 2020 Goodman Manufacturing Company, L.P

Amana is a registered trademark of Maytag Corporation or its related companies and is used under license to Goodman Company, L.P., Houston, TX, USA. All rights reserved.