

## MULTI-POSITION, MULTI-SPEED, ECM-BASED AIR HANDLER WITH INTERNAL TXV 1½ TO 5 TONS



### Contents

|                               |    |
|-------------------------------|----|
| Air Handler Nomenclature..... | 2  |
| Heater Kit Nomenclature ..... | 2  |
| Product Specifications.....   | 3  |
| Dimensions .....              | 4  |
| Airflow Data .....            | 5  |
| Heat Kit Data .....           | 7  |
| Wiring Diagram.....           | 9  |
| Accessories .....             | 12 |

### Product Features

- Internal factory-installed thermal expansion valves for cooling and heat pump applications
- Direct drive, multi-speed ECM blower motor
- All-aluminum evaporator coil
- Coil mounting track for quick repositioning
- Optimized for use with R-410A refrigerant
- Cabinet air leakage less than 2.0% at 1.0 inch H<sub>2</sub>O when tested in accordance with ASHRAE standard 193
- Cabinet air leakage less than 1.4% at 0.5 inch H<sub>2</sub>O when tested in accordance with ASHRAE standard 193
- AHRI certified; ETL listed
- Rigid SmartFrame™ cabinet
- Horizontal or vertical configuration capabilities
- 21" depth for easier attic access
- DecaBDE-free thermoplastic drain pan with secondary drain connections
- Screw-less sides and back helps to reduce condensation when installed in humid locations
- Foil-faced insulation covers the internal casing to reduce cabinet condensation
- Galvanized, leather grain-embossed finish
- Glue-less cabinet insulation retention
- Tool-less filter access
- Field Installed 3 kW – 25 kW electric heater kits available



\* Complete warranty details available from your local dealer or at [www.goodmanmfg.com](http://www.goodmanmfg.com). To receive the 10-Year Parts Limited Warranty, online registration must be completed within 60 days of installation. Online registration is not required in California or Québec.

| A                                 |               | M | S | T | 36  | B | U | 1          | 4  | 05    | A                           |  |            |
|-----------------------------------|---------------|---|---|---|-----|---|---|------------|----|-------|-----------------------------|--|------------|
| 1                                 |               | 2 | 3 | 4 | 5,6 | 7 | 8 | 9          | 10 | 11,12 | 13,14                       |  |            |
| <b>Product</b>                    |               |   |   |   |     |   |   |            |    |       | <b>Engineering *</b>        |  |            |
| A Corporate Air Handler           |               |   |   |   |     |   |   |            |    |       | Major/Minor Revisions       |  |            |
| D Daikin Air Handler              |               |   |   |   |     |   |   |            |    |       | A - Initial Release         |  |            |
|                                   |               |   |   |   |     |   |   |            |    |       | B - 1st Revision            |  |            |
| <b>Unit Application</b>           |               |   |   |   |     |   |   |            |    |       | <b>Electric Heat KW</b>     |  |            |
| C Ceiling Mount                   |               |   |   |   |     |   |   |            |    |       | 5 = 5kw                     |  |            |
| M Multi-Positional                |               |   |   |   |     |   |   |            |    |       | 8 = 8kw                     |  |            |
| W Wall Mount                      |               |   |   |   |     |   |   |            |    |       | 10 = 10kw                   |  |            |
| F Fit Compatible Multi-Positional |               |   |   |   |     |   |   |            |    |       | <b>Refrigerant</b>          |  |            |
| H Horizontal Discharge            |               |   |   |   |     |   |   |            |    |       | 3 - R32                     |  |            |
| Compatible Multi-Positional       |               |   |   |   |     |   |   |            |    |       | 4 - R410A                   |  |            |
|                                   |               |   |   |   |     |   |   |            |    |       | 6 - R410A or R22            |  |            |
| <b>Motor</b>                      |               |   |   |   |     |   |   |            |    |       | <b>Electrical</b>           |  |            |
| S MS-ECM                          |               |   |   |   |     |   |   |            |    |       | 1 208/240 V, 1 Phase, 60 Hz |  |            |
| V VS-ECM Communicating            |               |   |   |   |     |   |   |            |    |       |                             |  |            |
| <b>Expansion Device</b>           |               |   |   |   |     |   |   |            |    |       | <b>Cabinet</b>              |  |            |
| E Electronic Expansion Valve      |               |   |   |   |     |   |   |            |    |       | N - Uncased                 |  |            |
| F Flowrator                       |               |   |   |   |     |   |   |            |    |       | P - Painted                 |  |            |
| T Thermal Expansion Valve         |               |   |   |   |     |   |   |            |    |       | U - Unpainted               |  |            |
| <b>Nominal Capacity Range</b>     |               |   |   |   |     |   |   |            |    |       | <b>Cabinet Width</b>        |  |            |
| 12 = 1 Ton                        | 36 = 3.0 Tons |   |   |   |     |   |   | AC* Series |    |       | AM* Series                  |  | AW* Series |
| 18 = 1.5 Tons                     | 42 = 3.5 Tons |   |   |   |     |   |   | M = 43.25" |    |       | B = 17.5"                   |  | S = 20.2"  |
| 24 = 2.0 Tons                     | 48 = 4.0 Tons |   |   |   |     |   |   | L = 49.25" |    |       | C = 21.0"                   |  | L = 24.0"  |
| 30 = 2.5 Tons                     | 60 = 5.0 Tons |   |   |   |     |   |   |            |    |       | D = 24.5"                   |  |            |

\*DENOTES AHRI WILD CARDS

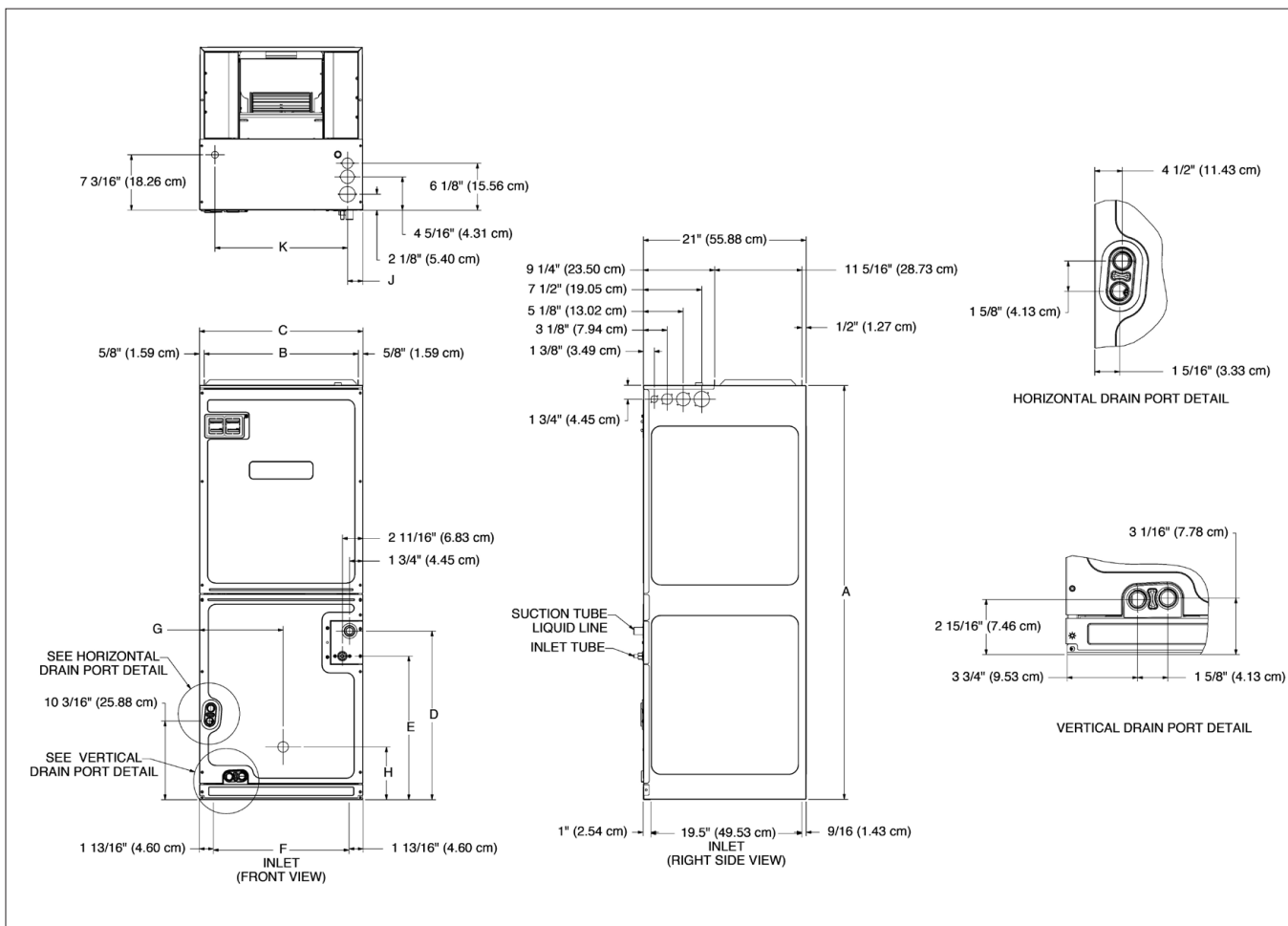
|                                     |        | HKS  | X                       | 03                  | X | A | AA                                       |         |             |
|-------------------------------------|--------|--|-------------------------|---------------------|---|---|--|---------|-------------|
|                                     |        | 1  | 2                       | 3                   | 4 | 5 | 6,7                                      |         |             |
| <b>Unit Type</b>                    |        |  |                         |                     |   |   | <b>Revisions</b>                         |         |             |
| HKS Heat Kit for Air Handlers       |        |  |                         |                     |   |   | Engineering Revisions                    |         |             |
| <b>Circuit Breaker</b>              |        |  |                         |                     |   |   | <b>Phase</b>                             |         |             |
| X No circuit breaker                |        |  |                         |                     |   |   | A Single Phase 208 V E Three Phase 240 V |         |             |
| C Circuit Breaker                   |        | B Single Phase 240 V F Three Phase 208/240 V |                         |                     |   |   |  |         |             |
|                                     |        | C Single Phase 208/240 V G Three Phase 460 V |                         |                     |   |   |  |         |             |
|                                     |        | D Three Phase 208 V                          |                         |                     |   |   |  |         |             |
|                                     |        | H Special case 208 V *                       |                         |                     |   |   |  |         |             |
| <b>Heating Capacity @ 240 Volts</b> |        |  |                         |                     |   |   | <b>Cabinet Size (MAX)</b>                |         |             |
| 03                                  | 3.0 kW |  |                         |                     |   |   | 15                                       | 14.4 kW | C C Cabinet |
| 05                                  | 4.5 kW | 19   | 19.2 kW wth 150F limit  | D D Cabinet         |   |   |  |         |             |
| 06                                  | 6.0 kW | 20   | 19.2 kW with 170F limit | X All Cabinet Sizes |   |   |  |         |             |
| 08                                  | 8.0 kW | 25   | 25.0 kW                 |                     |   |   |  |         |             |
| 10                                  | 9.6 kW |  |                         |                     |   |   |  |         |             |

|                                | AMST<br>24BU14* | AMST<br>30BU14* | AMST<br>36BU14* | AMST<br>36CU14* | AMST<br>42CU14* | AMST<br>48CU14* | AMST<br>48DU14* | AMST<br>60DU14* |
|--------------------------------|-----------------|-----------------|-----------------|-----------------|-----------------|-----------------|-----------------|-----------------|
| <b>NOMINAL RATINGS</b>         |                 |                 |                 |                 |                 |                 |                 |                 |
| Cooling (Btu/h)                | 24,000          | 36,000          | 36,000          | 36,000          | 42,000          | 48,000          | 48,000          | 60,000          |
| <b>BLOWER</b>                  |                 |                 |                 |                 |                 |                 |                 |                 |
| Diameter                       | 10"             | 10"             | 10"             | 10"             | 10"             | 10"             | 10"             | 11"             |
| Width                          | 6"              | 6"              | 6"              | 8"              | 8"              | 10"             | 10"             | 10"             |
| <b>COIL CONNECTIONS</b>        |                 |                 |                 |                 |                 |                 |                 |                 |
| Liquid                         | 3/8"            | 3/8"            | 3/8"            | 3/8"            | 3/8"            | 3/8"            | 3/8"            | 3/8"            |
| Suction                        | 3/4"            | 3/4"            | 3/4"            | 3/4"            | 3/4"            | 7/8"            | 7/8"            | 7/8"            |
| Coil Drain Connect (FPT)       | 3/4"            | 3/4"            | 3/4"            | 3/4"            | 3/4"            | 3/4"            | 3/4"            | 3/4"            |
| <b>ELECTRICAL DATA</b>         |                 |                 |                 |                 |                 |                 |                 |                 |
| Voltage                        | 208/230         | 208/230         | 208/230         | 208/230         | 208/230         | 208/230         | 208/230         | 208/230         |
| Minimum Circuit Ampacity       | 5.8/5.8         | 5.6/5.6         | 5.6/5.6         | 7.1/7.1         | 5.9/5.9         | 7.1/7.1         | 8.6/8.6         | 8.6/8.6         |
| Max. Overcurrent Device (Amps) | 15/15           | 15/15           | 15/15           | 15/15           | 15/15           | 15/15           | 15/15           | 15/15           |
| Minimum VAC                    | 197             | 197             | 197             | 197             | 197             | 197             | 197             | 197             |
| Maximum VAC                    | 253             | 253             | 253             | 253             | 253             | 253             | 253             | 253             |
| <b>Blower Motor</b>            |                 |                 |                 |                 |                 |                 |                 |                 |
| Full Load Amps (FLA)           | 4.6             | 4.5             | 4.5             | 5.7             | 4.7             | 6.9             | 6.9             | 6.9             |
| Horsepower (HP)                | $\frac{3}{4}$   | $\frac{3}{4}$   | $\frac{3}{4}$   | $\frac{3}{4}$   | $\frac{3}{4}$   | $\frac{3}{4}$   | $\frac{3}{4}$   | $\frac{3}{4}$   |
| <b>SHIP WEIGHT (LBS.)</b>      | 112             | 129             | 129             | 153             | 153             | 153             | 155             | 167             |

\*Airflow rate @.3 static

**Note:** Assumes dry coil; SCFM correction for wet coil = 4% (208V / 240V)

## DIMENSIONS



| MODEL     | A"      | B"       | C"      | D"       | E"       | F"       | G"       | H"      | J" | K"     |
|-----------|---------|----------|---------|----------|----------|----------|----------|---------|----|--------|
| AMST24BU* | 45      | 16 5/16  | 17 9/16 | 15 1/4   | 12       | 12 1/2   | 9        | 12 9/16 | 2  | 13 5/8 |
| AMST30BU* | 53 7/16 | 16 5/16  | 17 9/16 | 23 11/16 | 20 1/16  | 12 1/2   | 9        | 12 3/4  | 2  | 13 5/8 |
| AMST36BU* | 53 7/16 | 16 5/16  | 17 9/16 | 23 11/16 | 20 1/16  | 12 1/2   | 9        | 12 3/4  | 2  | 13 5/8 |
| AMST36CU* | 49      | 19 13/16 | 21 1/8  | 21 12/16 | 17 3/4   | 16 1/16  | 9        | 12 3/4  | 2  | 17 1/8 |
| AMST42CU* | 53 7/16 | 19 13/16 | 21 1/8  | 21 12/16 | 18 1/2   | 16 1/16  | 9        | 12 3/4  | 2  | 17 1/8 |
| AMST48CU* | 58      | 19 13/16 | 21 1/8  | 26 3/16  | 22 15/16 | 14 10/16 | 10 13/16 | 6 13/16 | 2  | 17 1/8 |
| AMST48DU* | 53 7/16 | 23 1/14  | 24 5/8  | 21 1/16  | 18 1/4   | 17 11/16 | 12 9/16  | 6 15/16 | 2  | 20 5/8 |
| AMST06DU* | 58      | 23 1/14  | 24 5/8  | 26       | 22 3/4   | 17 11/16 | 12 9/16  | 13 3/16 | 2  | 20 5/8 |

| MODEL<br>NUMBER    | SPEED<br>TAP | STATIC PRESSURE (IN W.C) |       |       |       |       |       |       |       |       |
|--------------------|--------------|--------------------------|-------|-------|-------|-------|-------|-------|-------|-------|
|                    |              | 0.1                      | 0.2   | 0.3   | 0.4   | 0.5   | 0.6   | 0.7   | 0.8   | 0.9   |
| AMST<br>24BU1400AA | T1           | 720                      | 690   | 625   | 605   | 525   | 505   | 385   | 370   | 265   |
|                    | T2           | 850                      | 825   | 770   | 750   | 675   | 665   | 590   | 575   | 470   |
|                    | T3           | 900                      | 875   | 830   | 815   | 750   | 740   | 670   | 655   | 550   |
|                    | T4           | 1,030                    | 1,005 | 960   | 950   | 900   | 890   | 825   | 820   | 760   |
|                    | T5           | 825                      | 800   | 745   | 730   | 660   | 645   | 560   | 550   | 460   |
|                    | T6           | 935                      | 910   | 865   | 850   | 790   | 780   | 715   | 705   | 620   |
|                    | T7           | 1,100                    | 1,080 | 1,035 | 1,020 | 970   | 960   | 902   | 900   | 840   |
|                    | T8           | 1,045                    | 1,025 | 985   | 970   | 920   | 910   | 820   | 845   | 785   |
|                    | T9           | 1,215                    | 1,195 | 1,155 | 1,145 | 1,105 | 1,095 | 1,045 | 1,040 | 980   |
| AMST<br>30BU1400AA | T1           | 750                      | 725   | 670   | 655   | 585   | 570   | 465   | 455   | 360   |
|                    | T2           | 920                      | 895   | 845   | 830   | 780   | 770   | 710   | 700   | 615   |
|                    | T3           | 985                      | 960   | 915   | 900   | 850   | 840   | 785   | 775   | 710   |
|                    | T4           | 1,185                    | 1,165 | 1,125 | 1,115 | 1,070 | 1,060 | 1,015 | 1,010 | 960   |
|                    | T5           | 1,070                    | 1,050 | 1,005 | 995   | 945   | 935   | 890   | 885   | 830   |
|                    | T6           | 620                      | 585   | 515   | 458   | 375   | 310   | 260   | 245   | 145   |
|                    | T7           | 840                      | 815   | 760   | 745   | 685   | 670   | 590   | 580   | 480   |
|                    | T8           | 855                      | 830   | 780   | 765   | 705   | 695   | 625   | 615   | 515   |
|                    | T9           | 995                      | 970   | 925   | 910   | 860   | 850   | 800   | 790   | 730   |
| AMST<br>36BU1400AA | T1           | 750                      | 725   | 670   | 655   | 585   | 570   | 465   | 455   | 360   |
|                    | T2           | 920                      | 895   | 845   | 830   | 780   | 770   | 710   | 700   | 615   |
|                    | T3           | 985                      | 960   | 915   | 900   | 850   | 840   | 785   | 775   | 710   |
|                    | T4           | 1,185                    | 1,165 | 1,125 | 1,115 | 1,070 | 1,060 | 1,015 | 1,010 | 960   |
|                    | T5           | 1,070                    | 1,050 | 1,005 | 995   | 945   | 935   | 890   | 885   | 830   |
|                    | T6           | 620                      | 585   | 515   | 485   | 375   | 310   | 260   | 245   | 145   |
|                    | T7           | 840                      | 815   | 760   | 745   | 685   | 670   | 590   | 580   | 480   |
|                    | T8           | 855                      | 830   | 780   | 765   | 705   | 695   | 625   | 615   | 515   |
|                    | T9           | 995                      | 970   | 925   | 910   | 860   | 850   | 800   | 790   | 730   |
| AMST<br>36CU1400AA | T 1          | 1,120                    | 1,085 | 1,020 | 1,000 | 910   | 890   | 770   | 760   | 680   |
|                    | T 2          | 1,285                    | 1,255 | 1,190 | 1,170 | 1,100 | 1,085 | 990   | 980   | 885   |
|                    | T 3          | 1,430                    | 1,400 | 1,345 | 1,330 | 1,260 | 1,250 | 1,175 | 1,165 | 1,065 |
|                    | T 4          | 1,735                    | 1,410 | 1,660 | 1,645 | 1,580 | 1,570 | 1,510 | 1,500 | 1,440 |
|                    | T 5          | 1,830                    | 1,805 | 1,755 | 1,740 | 1,685 | 1,675 | 1,605 | 1,595 | 1,525 |
|                    | T6           | 1,165                    | 1,130 | 1,055 | 1,035 | 960   | 940   | 825   | 815   | 715   |
|                    | T7           | 1,450                    | 1,425 | 1,370 | 1,355 | 1,285 | 1,275 | 1,200 | 1,190 | 1,095 |
|                    | T8           | 1,070                    | 1,035 | 960   | 935   | 830   | 810   | 700   | 690   | 610   |
|                    | T9           | 1,560                    | 1,530 | 1,470 | 1,455 | 1,390 | 1,380 | 1,310 | 1,300 | 1,235 |
| AMST<br>42CU1400AA | T1           | 1,165                    | 1,140 | 1,085 | 1,065 | 990   | 975   | 895   | 880   | 765   |
|                    | T2           | 1,210                    | 1,185 | 1,130 | 1,110 | 1,040 | 1,025 | 950   | 935   | 830   |
|                    | T3           | 12,515                   | 1,190 | 1,135 | 1,120 | 1,055 | 1,040 | 960   | 945   | 835   |
|                    | T4           | 1,495                    | 1,470 | 1,425 | 1,415 | 1,365 | 1,355 | 1,305 | 1,295 | 1,220 |
|                    | T5           | 1,435                    | 1,410 | 1,360 | 1,345 | 1,295 | 1,285 | 1,220 | 1,210 | 1,140 |
|                    | T6           | 1,410                    | 1,385 | 1,335 | 1,325 | 1,280 | 1,270 | 1,195 | 1,185 | 1,115 |
|                    | T7           | 1,440                    | 1,415 | 1,362 | 1,355 | 1,305 | 1,295 | 1,235 | 1,225 | 1,155 |
|                    | T8           | 1,230                    | 1,205 | 1,150 | 1,135 | 1,070 | 1,060 | 990   | 975   | 850   |
|                    | T9           | 1,495                    | 1,470 | 1,425 | 1,415 | 1,365 | 1,355 | 1,305 | 1,295 | 1,220 |

# AIRFLOW DATA (CONT.)

| MODEL NUMBER       | SPEED TAP | STATIC PRESSURE (IN W.C) |       |       |       |       |       |       |       |       |
|--------------------|-----------|--------------------------|-------|-------|-------|-------|-------|-------|-------|-------|
|                    |           | 0.1                      | 0.2   | 0.3   | 0.4   | 0.5   | 0.6   | 0.7   | 0.8   | 0.9   |
| AMST<br>48CU1400AA | T1        | 1,165                    | 1,390 | 1,330 | 1,310 | 1,235 | 1,220 | 1,135 | 1,125 | 1,050 |
|                    | T2        | 1,210                    | 1,550 | 1,490 | 1,470 | 1,400 | 1,390 | 1,315 | 1,305 | 1,230 |
|                    | T3        | 1,215                    | 1,610 | 1,560 | 1,545 | 1,480 | 1,470 | 1,400 | 1,390 | 1,315 |
|                    | T4        | 1,495                    | 1,710 | 1,660 | 1,640 | 1,560 | 1,550 | 1,485 | 1,475 | 1,410 |
|                    | T5        | 1,435                    | 1,795 | 1,750 | 1,735 | 1,680 | 1,670 | 1,605 | 1,595 | 1,525 |
|                    | T6        | 1,410                    | 1,435 | 1,375 | 1,355 | 1,280 | 1,265 | 1,165 | 1,155 | 1,065 |
|                    | T7        | 1,440                    | 1,700 | 1,650 | 1,635 | 1,570 | 1,560 | 1,495 | 1,485 | 1,420 |
|                    | T8        | 1,230                    | 1,730 | 1,680 | 1,665 | 1,595 | 1,585 | 1,515 | 1,505 | 1,425 |
|                    | T9        | 1,495                    | 1,295 | 1,230 | 1,210 | 1,130 | 1,115 | 1,025 | 1,015 | 930   |
| AMST<br>48DU1400AA | T1        | 1,425                    | 1,395 | 1,335 | 1,320 | 1,250 | 1,240 | 1,165 | 1,155 | 1,070 |
|                    | T2        | 1,510                    | 1,480 | 1,425 | 1,410 | 1,345 | 1,335 | 1,270 | 1,260 | 1,185 |
|                    | T3        | 1,605                    | 1,580 | 1,525 | 1,510 | 1,450 | 1,440 | 1,375 | 1,365 | 1,300 |
|                    | T4        | 1,875                    | 1,855 | 1,810 | 1,795 | 1,735 | 1,725 | 1,670 | 1,665 | 1,605 |
|                    | T5        | 1,755                    | 1,730 | 1,680 | 1,665 | 1,605 | 1,595 | 1,535 | 1,525 | 1,465 |
|                    | T6        | 1,350                    | 1,320 | 1,260 | 1,245 | 1,175 | 1,160 | 1,085 | 1,075 | 980   |
|                    | T7        | 1,140                    | 1,105 | 1,040 | 1,020 | 935   | 915   | 805   | 790   | 685   |
|                    | T8        | 1,605                    | 1,580 | 1,525 | 1,510 | 1,450 | 1,440 | 1,375 | 1,365 | 1,300 |
|                    | T9        | 1,605                    | 1,580 | 1,525 | 1,510 | 1,450 | 1,440 | 1,375 | 1,365 | 1,300 |
| AMST<br>60DU1400AA | T1        | 1,215                    | 1,175 | 1,095 | 1,070 | 975   | 950   | 790   | 780   | 700   |
|                    | T6        | 1,815                    | 1,785 | 1,725 | 1,710 | 1,650 | 1,640 | 1,570 | 1,560 | 1,490 |
|                    | T7        | 1,360                    | 1,325 | 1,250 | 1,230 | 1,145 | 1,125 | 1,010 | 990   | 850   |
|                    | T8        | 2,070                    | 2,045 | 1,995 | 1,980 | 1,930 | 1,920 | 1,855 | 1,845 | 1,785 |
|                    | T9        | 1,970                    | 1,945 | 1,895 | 1,880 | 1,815 | 1,805 | 1,740 | 1,730 | 1,600 |

## NOTES

1. Airflow data indicated is at 230V without air filter in place.
2. The chart is for information only. For satisfactory operation, external static pressure must not exceed value shown on rating plate.  
The shaded area indicates ranges in excess of maximum design external static pressure.
3. Use the CFM adjustment factors of 0.98 for horizontal left and 0.96 for horizontal right & downflow orientations
4. When applying a humidistat (normally closed), refer to the installation and operating instructions. The humidistat can adjust the cooling airflow to 85%.

|                         |      |
|-------------------------|------|
| Horizontal Left Factor  | 0.98 |
| Horizontal Right Factor | 0.95 |
| Downflow Factor         | 0.96 |

See notes on page 7.

| HEATER KIT MODEL      | CIRCUIT 1   |                  |                  | CIRCUIT 2   |                  |                  | SINGLE-POINT KIT |                  |
|-----------------------|-------------|------------------|------------------|-------------|------------------|------------------|------------------|------------------|
|                       | HEATER AMPS | MCA <sup>1</sup> | MOP <sup>2</sup> | HEATER AMPS | MCA <sup>1</sup> | MOP <sup>2</sup> | MCA <sup>1</sup> | MOP <sup>2</sup> |
| <b>AMST24BU1400AA</b> | 0/0         | 5.8/5.8          | 15/15            |             |                  |                  |                  |                  |
| HKS*03XC*             | 10.8/12.5   | 19/21.4          | 20/25            |             |                  |                  |                  |                  |
| HKS*05XC*             | 17.3/20     | 27/30.8          | 30/35            |             |                  |                  |                  |                  |
| HKS*06XC*             | 21.7/25     | 32.8/37          | 35/40            |             |                  |                  |                  |                  |
| HKS*08XC*             | 28.9/33.3   | 41.9/47          | 45/50            |             |                  |                  |                  |                  |
| HKS*10XC*             | 34.7/40     | 49.1/56          | 50/60            |             |                  |                  |                  |                  |
| HKSC15XA 208          | 34.7        | 49.1             | 50               | 17.3        | 21.7             | 25               | 70.8             | 80               |
| HKSC15XB 240          | 40          | 55.8             | 60               | 20          | 25               | 25               | 80.8             | 90               |
| <b>AMST30BU1400AA</b> | 0/0         | 5.6/5.6          | 15/15            |             |                  |                  |                  |                  |
| HKS*03XC*             | 10.8/12.5   | 19/21.3          | 20/25            |             |                  |                  |                  |                  |
| HKS*05XC*             | 17.3/20     | 27/30.6          | 30/35            |             |                  |                  |                  |                  |
| HKS*06XC*             | 21.7/25     | 32.7/37          | 35/40            |             |                  |                  |                  |                  |
| HKS*08XC*             | 28.9/33.3   | 42/47.3          | 45/50            |             |                  |                  |                  |                  |
| HKS*10XC*             | 34.7/40     | 49/55.6          | 50/60            |             |                  |                  |                  |                  |
| HKSC15XA 208          | 34.7        | 49               | 50               | 17.3        | 21.7             | 25               | 70.8             | 80               |
| HKSC15XB 240          | 40          | 55.6             | 60               | 20          | 25               | 25               | 80.8             | 90               |
| <b>AMST36BU1400AA</b> | 0/0         | 5.6/5.6          | 15/15            |             |                  |                  |                  |                  |
| HKS*03XC*             | 10.8/12.5   | 19/21.3          | 20/25            |             |                  |                  |                  |                  |
| HKS*05XC*             | 17.3/20     | 27/30.6          | 30/35            |             |                  |                  |                  |                  |
| HKS*06XC*             | 21.7/25     | 32.7/37          | 35/40            |             |                  |                  |                  |                  |
| HKS*08XC*             | 28.9/33.3   | 42/47.3          | 45/50            |             |                  |                  |                  |                  |
| HKS*10XC*             | 34.7/40     | 49/55.6          | 50/60            |             |                  |                  |                  |                  |
| HKSC15XA 208          | 34.7        | 49               | 50               | 17.3        | 21.7             | 25               | 70.8             | 80               |
| HKSC15XB 240          | 40          | 55.6             | 60               | 20          | 25               | 25               | 80.8             | 90               |
| <b>AMST36CU1400AA</b> | 0/0         | 7.1/7.1          | 15/15            |             |                  |                  |                  |                  |
| HKS*03XC*             | 10.8/12.5   | 20.7/23          | 25/25            |             |                  |                  |                  |                  |
| HKS*05XC*             | 17.3/20     | 29/32.1          | 30/35            |             |                  |                  |                  |                  |
| HKS*06XC*             | 21.7/25     | 34/38.4          | 35/40            |             |                  |                  |                  |                  |
| HKS*08XC*             | 28.9/33.3   | 43/48.8          | 45/50            |             |                  |                  |                  |                  |
| HKS*10XC*             | 34.7/40     | 50.5/57          | 60/60            |             |                  |                  |                  |                  |
| HKS*15XF*             | 0/0         | 7.1/7.1          | 15/15            | 30/34.6     | 30/34.6          | 40/45            |                  |                  |
| HKSC15XA 208          | 34.7        | 50.5             | 60               | 17.3        | 17.3             | 25               | 72.1             | 80               |
| HKSC15XB 240          | 40          | 57.1             | 60               | 20          | 20               | 25               | 82.1             | 90               |
| HKSC19CH 208          | 34.7        | 50.5             | 60               | 34.7        | 34.7             | 45               | 93.9             | 100              |
| HKSC19CB 240          | 40          | 57.1             | 60               | 40          | 40               | 50               | 107              | 110              |
| <b>AMST42CU1400AA</b> | 0/0         | 5.9/5.9          | 15/15            |             |                  |                  |                  |                  |
| HKS*03XC*             | 10.8/12.5   | 19/21.5          | 20/25            |             |                  |                  |                  |                  |
| HKS*05XC*             | 17.3/20     | 28/30.9          | 30/35            |             |                  |                  |                  |                  |
| HKS*06XC*             | 21.7/25     | 33/37.1          | 35/40            |             |                  |                  |                  |                  |
| HKS*08XC*             | 28.9/33.3   | 42/47.5          | 45/50            |             |                  |                  |                  |                  |
| HKS*10XC*             | 34.7/40     | 49/55.9          | 50/60            |             |                  |                  |                  |                  |
| HKS*15XF*             | 0/0         | 5.9/5.9          | 15/15            | 30/34.6     | 38/43            | 40/45            |                  |                  |
| HKSC15XA 208          | 34.7        | 49.2             | 50               | 17.3        | 21.7             | 25               | 70.9             | 80               |
| HKSC15XB 240          | 40          | 55.9             | 60               | 20          | 25               | 25               | 80.9             | 90               |
| HKSC19CA 208          | 34.7        | 49.2             | 50               | 34.7        | 43.3             | 45               | 92.5             | 100              |
| HKSC19CB 240          | 40          | 55.9             | 60               | 40          | 50               | 50               | 106              | 110              |

See notes on page 8.

## HEAT KIT DATA (CONT.)

| HEATER KIT MODEL      | CIRCUIT 1   |                  |                  | CIRCUIT 2   |                  |                  | SINGLE-POINT KIT |                  |
|-----------------------|-------------|------------------|------------------|-------------|------------------|------------------|------------------|------------------|
|                       | HEATER AMPS | MCA <sup>1</sup> | MOP <sup>2</sup> | HEATER AMPS | MCA <sup>1</sup> | MOP <sup>2</sup> | MCA <sup>1</sup> | MOP <sup>2</sup> |
| <b>AMST48CU1400AA</b> | 0/0         | 7.1/7.1          | 15/15            |             |                  |                  |                  |                  |
| HKS*03XC*             | 10.8/12.5   | 20.7/23          | 25/25            |             |                  |                  |                  |                  |
| HKS*05XC*             | 17.3/20     | 29/32.1          | 30/35            |             |                  |                  |                  |                  |
| HKS*06XC*             | 21.7/25     | 34/38.4          | 35/40            |             |                  |                  |                  |                  |
| HKS*08XC*             | 28.9/33.3   | 43/48.8          | 45/50            |             |                  |                  |                  |                  |
| HKS*10XC*             | 34.7/40     | 50.5/57          | 60/60            |             |                  |                  |                  |                  |
| HKS*15XF*             | 0/0         | 7.1/7.1          | 15/15            | 30/34.6     | 38/43            | 40/45            |                  |                  |
| HKSC15XA 208          | 34.7        | 50.5             | 60               | 17.3        | 21.7             | 25               | 72.1             | 80               |
| HKSC15XB 240          | 40          | 57.1             | 60               | 20          | 25               | 25               | 82.1             | 90               |
| HKSC19CH 208          | 34.7        | 50.5             | 60               | 34.7        | 43.3             | 45               | 93.9             | 100              |
| HKSC19CB 240          | 40          | 57.1             | 60               | 40          | 50               | 50               | 107              | 110              |
| <b>AMST48DU1400</b>   | 0/0         | 8.6/8.6          | 15/15            |             |                  |                  |                  |                  |
| HKS*03XC*             | 10.8/12.5   | 22/24.3          | 25/25            |             |                  |                  |                  |                  |
| HKS*05XC*             | 17.3/20     | 30.3/34          | 35/35            |             |                  |                  |                  |                  |
| HKS*06XC*             | 21.7/25     | 36/39.9          | 40/40            |             |                  |                  |                  |                  |
| HKS*08XC*             | 28.9/33.3   | 45/50.3          | 45/60            |             |                  |                  |                  |                  |
| HKS*10XC*             | 34.7/40     | 52/58.6          | 60/60            |             |                  |                  |                  |                  |
| HKS*15XF*             | 0/0         | 8.6/8.6          | 15/15            | 30/34.6     | 38/43            | 40/45            |                  |                  |
| HKSC15XA 208          | 34.7        | 52               | 60               | 17.3        | 21.7             | 25               | 73.6             | 80               |
| HKSC15XB 240          | 40          | 58.6             | 60               | 20          | 25               | 25               | 83.6             | 90               |
| HKS*20XF*             | 0/0         | 8.6/8.6          | 15/15            | 37.5/43.3   | 47/54            | 50/60            |                  |                  |
| HKSC20DA 208          | 34.7        | 52               | 60               | 34.7        | 43.3             | 45               | 95.3             | 100              |
| HKSC20DB 240          | 40          | 58.6             | 60               | 40          | 50               | 50               | 109              | 110              |
| <b>AMST60DU1400</b>   | 0/0         | 8.6/8.6          | 15/15            |             |                  |                  |                  |                  |
| HKS*03XC*             | 10.8/12.5   | 22/24.3          | 25/25            |             |                  |                  |                  |                  |
| HKS*05XC*             | 17.3/20     | 30.3/34          | 35/35            |             |                  |                  |                  |                  |
| HKS*06XC*             | 21.7/25     | 36/39.9          | 40/40            |             |                  |                  |                  |                  |
| HKS*08XC*             | 28.9/33.3   | 45/50.3          | 45/60            |             |                  |                  |                  |                  |
| HKS*10XC*             | 34.7/40     | 52/58.6          | 60/60            |             |                  |                  |                  |                  |
| HKS*15XF*             | 0/0         | 8.6/8.6          | 15/15            | 30/34.6     | 38/43            | 40/45            |                  |                  |
| HKSC15XA 208          | 34.7        | 52               | 60               | 17.3        | 21.7             | 25               | 73.6             | 80               |
| HKSC15XB 240          | 40          | 58.6             | 60               | 20          | 25               | 25               | 83.6             | 90               |
| HKS*20XF*             | 0/0         | 8.6/8.6          | 15/15            | 37.5/43.3   | 47/54            | 50/60            |                  |                  |
| HKSC20DH 208          | 34.7        | 52               | 60               | 34.7        | 43.3             | 45               | 95.3             | 100              |
| HKSC20DB 240          | 40          | 58.6             | 60               | 40          | 50               | 50               | 109              | 110              |
| HKTSD25DA 208         | 52          | 73.6             | 80               | 35          | 43.3             | 45               | 117              | 125              |
| HKTSD25DB 240         | 60          | 83.6             | 90               | 40          | 50               | 50               | 134              | 150              |

<sup>1</sup>Minimum Circuit Ampacity (Heater Amps + Motor Amps) X 1.25

<sup>2</sup>Maximum Overcurrent Protection = 2.25 X Motor Amps + Heater Amps

<sup>^</sup>Circuit 1: Single-phase for Air Handlers    Circuit 2: Three-phase for HKR3 Heater Kits

---indicates Not Required

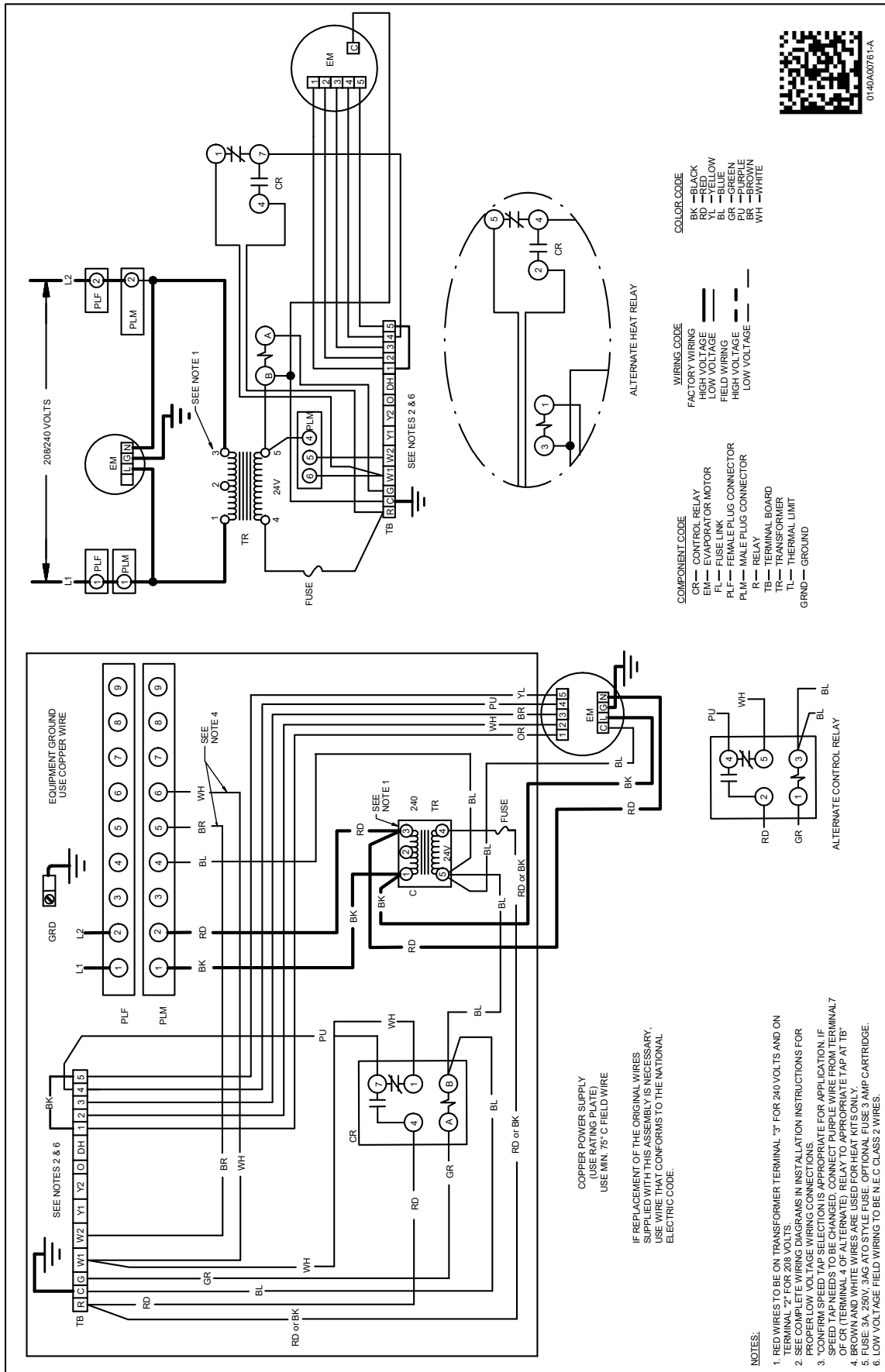
Note: The 208 or 240 in the heat kit part number field is for clarification of the nominal voltage for this model.

## HEATING KW CORRECTION FACTOR

| SUPPLY VOLTAGE    | 240  | 230  | 220  | 210  | 208  |
|-------------------|------|------|------|------|------|
| CORRECTION FACTOR | 1.00 | 0.92 | 0.84 | 0.77 | 0.75 |

Multiply the 240-volt heating capacity by correction factors.

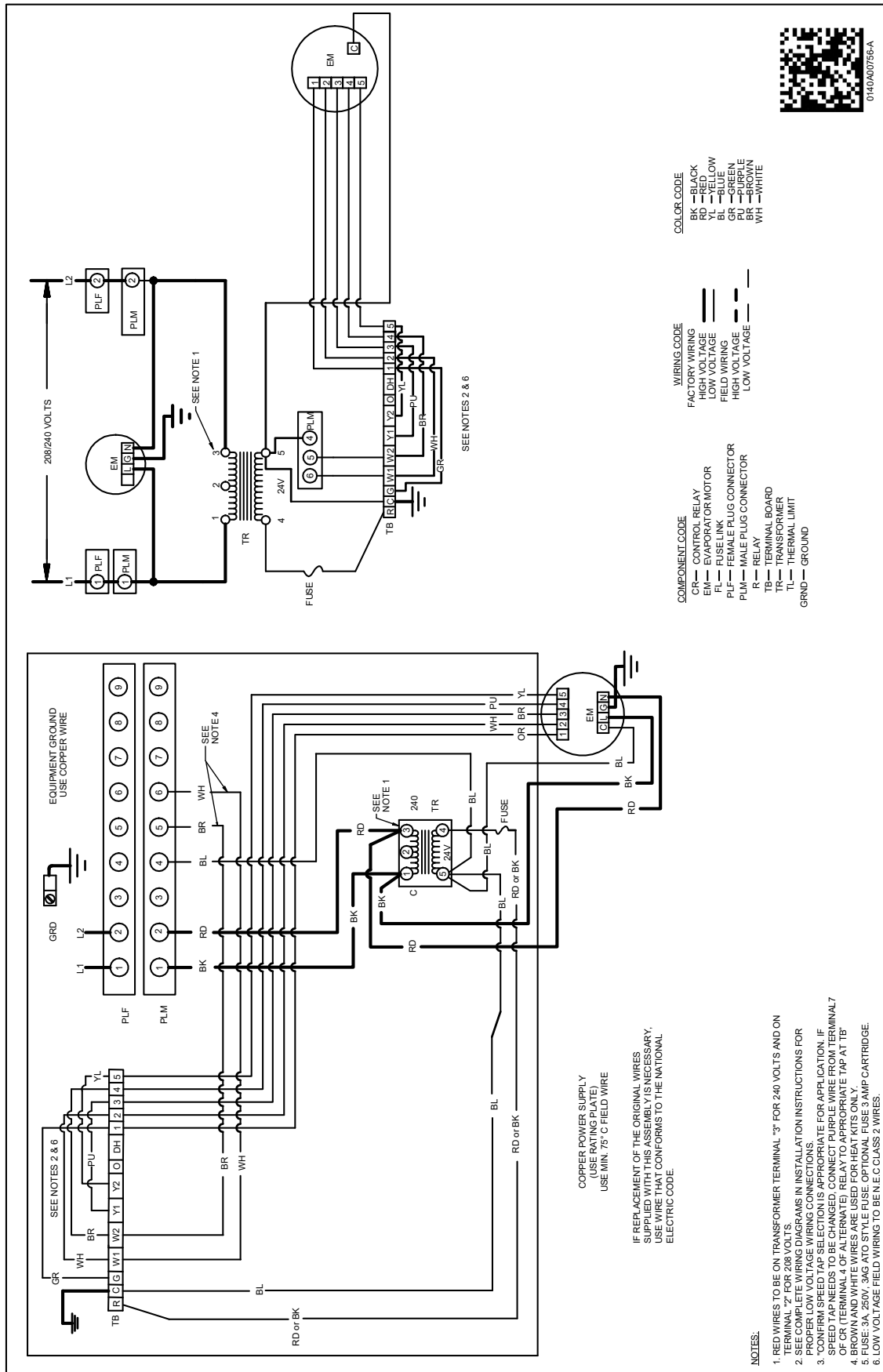


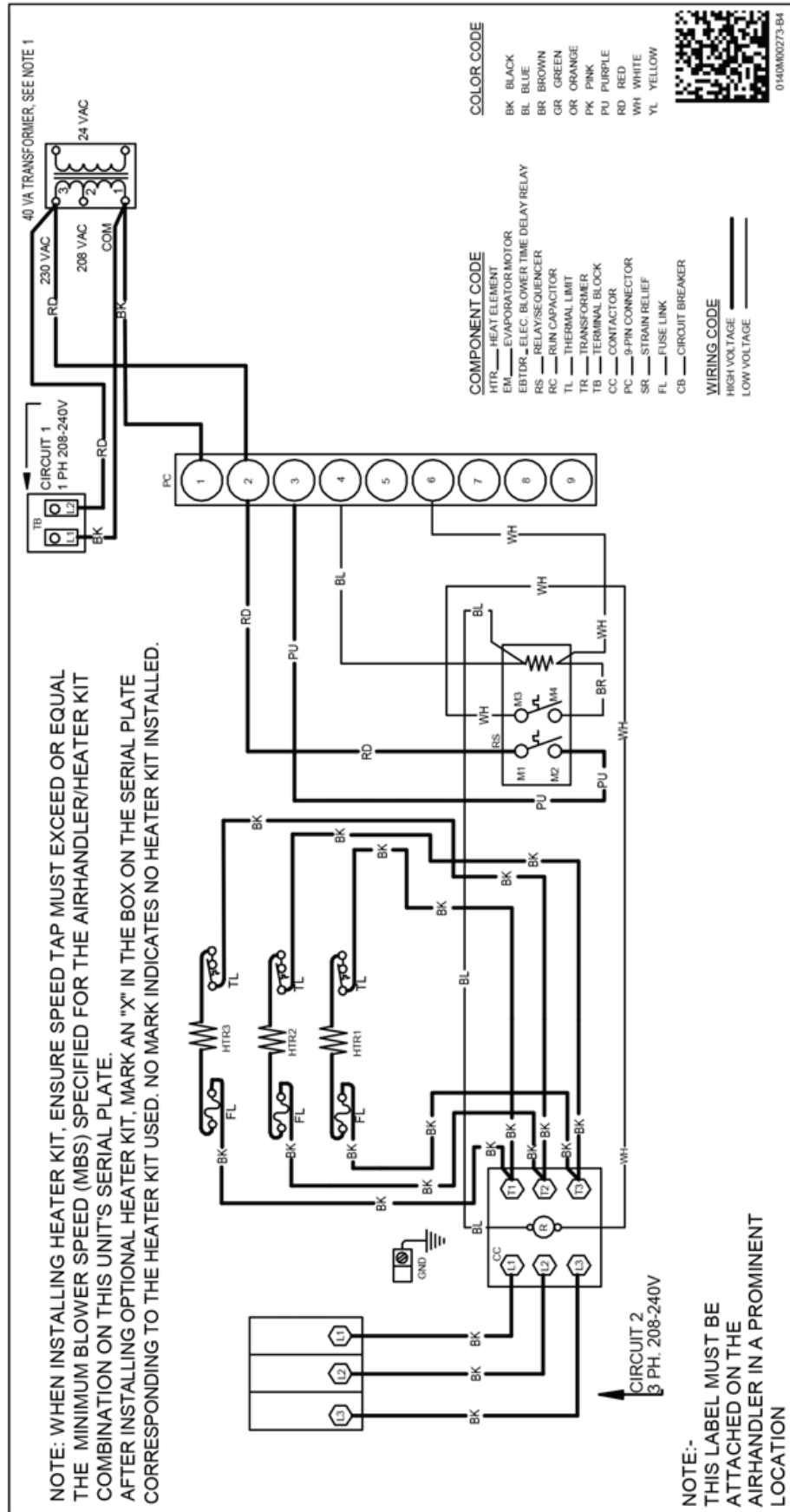


**WARNING**

**High Voltage:** Disconnect all power before servicing or installing this unit. Multiple power sources may be present. Failure to do so may cause property damage, personal injury, or death.

Wiring is subject to change. Always refer to the wiring diagram on the unit for the most up-to-date wiring.





Wiring is subject to change. Always refer to the wiring diagram on the unit for the most up-to-date wiring.

**⚠ WARNING**

**High Voltage:** Disconnect all power before servicing or installing this unit. Multiple power sources may be present. Failure to do so may cause property damage, personal injury, or death.

*DOWNFLOW KITS*

| DFKE-02        | DFKE-03        |
|----------------|----------------|
| AMST24BU1400** | AMST48CU1400** |
| AMST30BU1400** | AMST48DU1400** |
| AMST36BU1400** | AMST60DU1400** |
| AMST36CU1400** |                |
| AMST42CU1400** |                |

*HIGH HUMIDITY KIT*

| HHK0004        | HHK0005        | HHK0006        | HHK0007        |
|----------------|----------------|----------------|----------------|
| AMST24BU1400** | AMST36CU1400** | AMST48DU1400** | AMST60DU1400** |
| AMST30BU1400** | AMST42CU1400** |                |                |
| AMST36BU1400** | AMST48CU1400** |                |                |

*CONDENSATE MANAGEMENT KIT*

| CMK0018        | CMK0019        | CMK0020        |
|----------------|----------------|----------------|
| AMST24BU1400** | AMST30BU1400** | AMST48CU1400** |
| AMST36CU1400** | AMST36BU1400** | AMST48DU1400** |
|                | AMST42CU1400** | AMST60DU1400** |

*FILTERS*

| CHASSIS | PART #       | SIZE          |
|---------|--------------|---------------|
| B       | ALFH16201E   | 16.0" x 20.0" |
| C       | ALFH1912201E | 19.5" x 20.0" |
| D       | ALFH20231E   | 23.0" x 20.0" |

*SINGLE POINT WIRING KIT (SPW-01)*

| HEATER KIT MODEL | SPWK-B         | SPWK-C   | SPWK-D         |
|------------------|----------------|--|----------------|
| HKSC15XB-240V    | AMST24BU1400** | AMST36CU1400**<br>AMST42CU1400**<br>AMST48CU1400** | AMST48DU1400** |
| HKSC15XA-208V    | AMST30BU1400** |  | AMST60DU1400** |
| HKSC19CA-208V    | AMST36BU1400** |  |                |
| HKSC19CB-240V    |                |  |                |
| HKSC20DA-208V    |                |  | AMST48DU1400** |
| HKSC20DB-240V    |                |  | AMST60DU1400** |
| HKSC25DA-240V    |                |  | AMST60DU1400** |
| HKSC25DA-208V    |                |  |                |
| HKSC25DA         |                |  |                |