

## SUBMITTAL SHEET

JOB NAME	ITEM TAG
JOB LOCATION	PART NUMBER
CONTRACTOR	DATE
ENGINEER APPROVAL	DATE

## FULL PORT BALL VALVE

### T/S-2000

Durable forged brass body.

Bottom-loaded, blowout-proof, gland-follower stem design.

Positive-seal stem features dual-seal PTFE packing and EPDM rubber O-ring.

Complete certifications compliance.

Available in female pipe threaded sizes 1/4" to 4" and female sweat tubing sizes 1/2" to 4"

#### Working Pressure, Non-Shock (PSI)

Cold Water, Oil, Gas: 1/4" to 2" 600 CWP  
2-1/2" to 4" 400 CWP

Saturated Steam: All sizes 150 psi



• Conforms to MSS SP-110

• UPC/IAPMO tested and certified to ANSI/NSF Standard 61-8

• CSA Certified for use with natural, manufactured, mixed, liquid petroleum, and LP gas/air mixtures:

◦ ANSI Standard Z21.15 for use as gas appliance connector valve for 1/2-lb systems (1/4" to 2")

◦ CSA Certified for use in 2 or 5 lb house piping systems (1/4" to 4")

• Factory Mutual approved for fire protection service (Threaded: 1/4" to 2" Sweat: 1/2" to 2")

• Manufactured in an ISO 9002 accredited facility



• End connections comply with ANSI/ASME B1.20.1 and ASME B16.18

• UL Listed 3LZW for LP, natural and manufactured gases to 250 psi maximum:

◦ YQNZ.MH45831 Compressed gas shutoff valves

◦ YRBX.MH45831 Flammable liquid shutoff valves.

◦ YRPV.MH45831 Gas shutoff valves

◦ YSDT.MH45831 LP gas shutoff valves

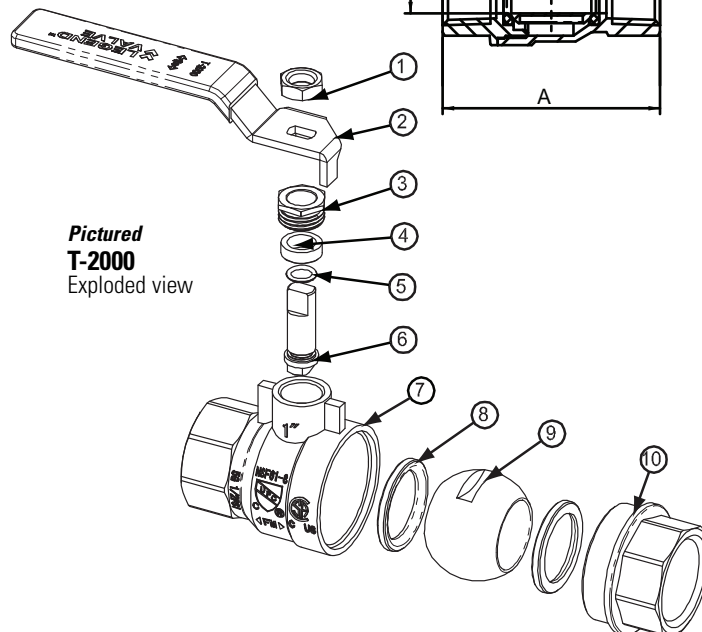
◦ MHKZ.MH45831 Manual valves

#### MATERIAL SPECIFICATION

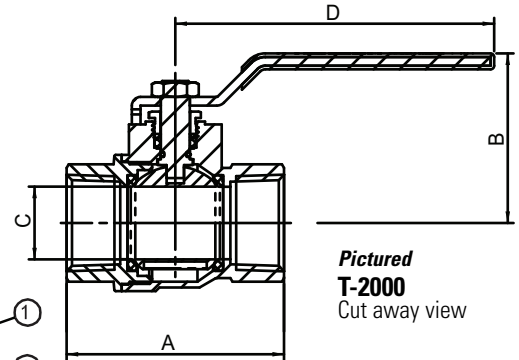
PART	MATERIAL	SPECIFICATION
1 Handle nut	Zinc plated steel	ASME SA6, SA283 Grade C
2 Lever handle	Zinc plated steel	ASME SA6, SA283 Grade C
3 Packing nut	Forged brass	ASTM B455 UNS C38500
4 Stem packing	PTFE	FR101 resin
5 Stem O-ring	EPDM rubber	Commercial grade
6 Stem	Forged brass	ASTM B16 UNS C36000
7 Body	Forged brass	ASTM B124 / 124M UNS C37700
8 Seats (2)	PTFE	FR101 resin
9 Ball	Chrome plated forged brass	ASTM B455 UNS C38500
10 End adapter	Forged brass	ASTM B124 / 124M UNS C37700

#### DIMENSIONS

Size	A (IPS)	A (CxC)	B	C	D
1/4"	1.73		1.42	0.39	3.19
3/8"	1.73		1.42	0.39	3.19
1/2"	2.17	2.05	1.66	0.57	3.74
3/4"	2.46	2.76	1.90	0.75	3.74
1"	2.95	3.33	2.30	0.98	4.33
1-1/4"	3.39	3.86	2.70	1.26	5.12
1-1/2"	3.78	4.45	2.91	1.54	5.12
2"	4.33	5.47	3.48	1.95	6.34
2-1/2"	5.55	6.46	4.65	2.50	9.45
3"	6.38	7.52	5.02	3.03	9.45
4"	7.54	9.49	5.93	3.94	9.45



Pictured T-2000 Exploded view



Pictured T-2000 Cut away view