

TracPipe Submittal Drawings

Doc No.	Description	Applicable P/N(s)
FGP-SUB-CPG	Submittals Cover Page	N/A
FGP-SUB-001	TracPipe Gas Piping, 3/8" through 2"	FGP-SS4-XXX
FGP-SUB-002	Counterstrike Gas Piping, 3/8" through 2"	FGP-CS-XXX
FGP-SUB-003	TracPipe PS-II Gas Piping, 3/8" through 2"	FGP-UGP-XXX
FGP-SUB-004	AutoFlare Straight Fitting Assy	FGP-FST-XXX
FGP-SUB-005	AutoFlare Female Straight Fitting Assy	FGP-FSTF-XXX
FGP-SUB-006	AutoFlare Coupling Assy	FGP-CPLG-XXX
FGP-SUB-007	Flange Fitting Assy	FGP-BFF-XXX
FGP-SUB-008	Flange L Bracket	FGP-TERM-BRAC
FGP-SUB-009	90 Flange Fitting Assy	FGP-ELLB-XXX
FGP-SUB-010	90 Flange Valve Assy	FGP-BF90V-XXX
FGP-SUB-011	Termination Mount Assy	FGP-TM-XXX
FGP-SUB-012	90 Termination Mount Assy	FGP-90TM-XXX
FGP-SUB-013	90 Termination Valve Assy	FGP-TM90V-XXX
FGP-SUB-014	AutoFlare x Pipe NPT Tee	FGP-TXXX-XXX
FGP-SUB-015	AutoFlare Tee Assy	FGP-TFXXX-TXXX / FGP-RT-XXX
FGP-SUB-016	Key Valve Bracket Assy	FGP-KVB-XXX
FGP-SUB-017	Meter Termination Stub-out M-NPT	FGP-XXX MT
FGP-SUB-018	Meter Stub Bracket	FGP-STUD-BRAC
FGP-SUB-019	Appliance Stub-out M-NPT	FGP-ASP-500
FGP-SUB-020	Fireplace Stub-out M-NPT	FGP-FPT-500
FGP-SUB-021	Meter Termination TracPipe	FGP-MTX-XXX
FGP-SUB-022	Meter Termination Bracket	FGP-MT-BRAC
FGP-SUB-023	Metal Wall Box w/ Valve Assy	FGP-WBTM-XXX
FGP-SUB-024	Manifolds FGP-MI-SIZE	FGP-MI-PC, PC-1X, PC-2X
FGP-SUB-025	Manifold Bracket	FGP-MB2
FGP-SUB-026	Stackable Manifold	FGP-MI-ST-XXX
FGP-SUB-027	Stackable Manifold Bracket	FGP-MB-ST
FGP-SUB-028	Load Center w/ Manifold Bracket	FGP-LC
FGP-SUB-029	Bonding Clamps	FGP-GC-X
FGP-SUB-030	PS-II Coupling Assy	FGP-UGF-XXX
FGP-SUB-031	PS-II Adapter Assy	FGP-UGC-XXX
FGP-SUB-032	Striker Plates	FGP-SP-XXX
FGP-SUB-033	Ball Valve 5 psi	FGP-WBV-XXX
FGP-SUB-034	Quick Disconnect	FGP-QDS
FGP-SUB-035	Excess Flow Valve	FGP-AFD-XXX / FGP-LFD-XXX
FGP-SUB-036	90 deg Appliance Stub-out	FGP-ASP90S-XXX
FGP-SUB-037	AutoSnap Straight Fitting Assy.	FGP-SFST-XXX
FGP-SUB-038	AutoSnap Female Fitting	FGP-SFSTF-XXX
FGP-SUB-039	AutoSnap Coupling Assy.	FGP-SCPLG-XXX
FGP-SUB-040	AutoSnap Steel Flange Mount	FGP-SRFG-XXX
FGP-SUB-041	Metal Wall Box w/ AutoSnap Valve Assy	FGP-SWBTM-XXX
FGP-SUB-042	AutoSnap Tee X NPT	FGP-STXXX-XXX
FGP-SUB-043	AutoSnap Tee Fitting Tubing X Tubing	FGP-STFXXX-TXXX / FGP-SRT-XXX
FGP-SUB-044	Self Bonding Silicone Tape - Black	FGP-915-10H-12BL
FGP-SUB-045	AutoFlare Steel Flange Mount	FGP-RFG-XXX
FGP-SUB-046	90 deg AutoSnap Steel Flange Mount	FGP-ELS-500
FGP-SUB-047	90 deg AutoSnap Steel Flange Mount w/ AutoSnap Valve Assy	FGP-RF90V-XXX
FGP-SUB-048	Self Bonding Silicone Tape - Yellow	FGP-915-XXX

FGP-SUB-IND.CAN

Rev 12/19

Submittal Package

Project:

Engineer:

Contractor:

Submitted by:

Date:

*Gas Piping System(s) Included (check all that apply):

- ☐ TracPipe
- ☐ Counterstrike
- ☐ TracPipe PS-II

**Gas Piping System includes all related components attached*

Product

TracPipe Flexible Gas Piping, 3/8" through 2"

Project Information

Job Name:	Date Submitted:
Location:	Submitted By:
Engineer:	Approved By:
Contractor:	Manufacturer's Rep:

Installation

Must be installed in accordance with the TracPipe Design Guide and Installation Instructions and all applicable codes

Application Information

Yellow Jacketed Flexible Gas Piping for use in Natural Gas and Liquefied Petroleum (Propane) Gas applications. Used with TracPipe AutoFlare fittings and accessories.

Technical Data

Materials

Tubing	ASTM A240 300 Series Stainless Steel
Jacket	UV/Ozone Resistant Polyethylene with flame retardant

Pressure Ratings

Specification Operating Pressure	25 PSIG
CSA International Evaluation Report - Max Operating Pressure, 3/8" through 1-1/4"	125 PSIG

Temperature Ratings

Operating Temperature Range	-20 to 200 Deg F
Tubing Melting Point	2400 Deg F
Jacket Melting Point	350 Deg F



Codes

ICC Codes (IFGC, IRC, IMC, IPC), NFPA 54, UPC, CAN/CSA B149.1, NFPA 58

Standards

ANSI LC1 / CSA 6.26, UL 723 (ASTM E84), ANSI Z223.1

Listings

CSA, ICC PMG 1046, IAPMO (UPC) File No. 3682, UL (Through Penetration Firestop Systems)

Dimensional Information

✓	Size	*P/N	EHD	OD w/ Jacket (Nom. in.)	OD w/o Jacket (Nom. in.)	ID (Nom. In.)	Tubing Wall Thickness (in.)	Weight (lbs/ft)
<input type="checkbox"/>	3/8"	FGP-SS4-375-XXX	15	0.640	0.600	0.440	0.010	0.12
<input type="checkbox"/>	1/2"	FGP-SS4-500-XXX	19	0.828	0.788	0.597	0.010	0.16
<input type="checkbox"/>	3/4"	FGP-SS4-750-XXX	25	1.080	1.040	0.820	0.010	0.24
<input type="checkbox"/>	1"	FGP-SS4-100-XXX	31	1.355	1.315	1.060	0.010	0.31
<input type="checkbox"/>	1-1/4"	FGP-SS4-125-XXX	37	1.660	1.600	1.290	0.012	0.47
<input type="checkbox"/>	1-1/2"	FGP-SS4-150-XXX	46	1.900	1.840	1.525	0.012	0.56
<input type="checkbox"/>	2"	FGP-SS4-200-XXX	62	2.475	2.415	2.060	0.012	0.85

*XXX - Denotes Reel size (length of pipe) in feet

Omega Flex, Inc. * 451 Creamery Way* Exton, PA 19341

Tel: 610-524-7272 * Toll Free: 800-671-8622 * Fax: 610-524-7282

www.omegaflex.com

Product

CounterStrike Flexible Gas Piping, 3/8" through 2"

Project Information

Job Name:	Date Submitted:
Location:	Submitted By:
Engineer:	Approved By:
Contractor:	Manufacturer's Rep:

Installation

Must be installed in accordance with the TracPipe Design Guide and Installation Instructions and all applicable codes

Application Information

Conductive Jacketed Flexible Gas Piping for use in Natural Gas and Liquified Petroleum (Propane) Gas applications. Used with TracPipe AutoFlare fittings and accessories.

Technical Data

Materials

Tubing	ASTM A240 300 Series Stainless Steel
Jacket	UV/Ozone Resistant Polyethylene with flame retardant

Pressure Ratings

Specification Operating Pressure	25 PSIG
CSA International Evaluation Report - Max Operating Pressure, 3/8" through 1-1/4"	125 PSIG

Temperature Ratings

Operating Temperature Range	-20 to 200 Deg F
Tubing Melting Point	2400 Deg F
Jacket Melting Point	350 Deg F



Codes

ICC Codes (IFGC, IRC, IMC, IPC), NFPA 54, UPC, CAN/CSA B149.1, NFPA 58

Standards

ANSI LC1 / CSA 6.26, UL 723 (ASTM E84), ICC LC 1024, ANSI Z223.1

Listings

CSA, ICC PMG 1058, UL (Through Penetration Firestop Systems), IAPMO ES ER-0227

Dimensional Information

✓	Size	*P/N	EHD	OD w/ Jacket (Nom. in.)	OD w/o Jacket (Nom. in.)	ID (Nom. In.)	Tubing Wall Thickness (in.)	Weight (lbs/ft)
<input type="checkbox"/>	3/8"	FGP-CS-375-XXX	15	0.700	0.600	0.440	0.010	0.15
<input type="checkbox"/>	1/2"	FGP-CS-500-XXX	19	0.888	0.788	0.597	0.010	0.21
<input type="checkbox"/>	3/4"	FGP-CS-750-XXX	25	1.140	1.040	0.820	0.010	0.28
<input type="checkbox"/>	1"	FGP-CS-1000-XXX	31	1.415	1.315	1.060	0.010	0.39
<input type="checkbox"/>	1-1/4"	FGP-CS-1250-XXX	37	1.700	1.600	1.290	0.012	0.52
<input type="checkbox"/>	1-1/2"	FGP-CS-1500-XXX	46	1.940	1.840	1.525	0.012	0.73
<input type="checkbox"/>	2"	FGP-CS-2000-XXX	62	2.515	2.415	2.060	0.012	0.91

*XXX - Denotes Reel size (length of pipe) in feet

Omega Flex, Inc. * 451 Creamery Way* Exton, PA 19341

Tel: 610-524-7272 * Toll Free: 800-671-8622 * Fax: 610-524-7282

www.omegaflex.com

Product

TracPipe PS-II Flexible Gas Piping, 3/8" through 2"

Project Information

Job Name:	Date Submitted:
Location:	Submitted By:
Engineer:	Approved By:
Contractor:	Manufacturer's Rep:

Installation

Must be installed in accordance with the TracPipe Design Guide and Installation Instructions and all applicable codes

Application Information

Black Jacketed "Pre-Sleeved" Flexible Gas Piping approved for direct burial in Underground Natural Gas and Liquified Petroleum (Propane) Gas applications. Used with TracPipe PS-II Male Adapter fittings or Couplings.

Technical Data

Materials

Tubing	ASTM A240 300 Series Stainless Steel
Jacket	UV/Ozone Resistant Polyethylene

Pressure Ratings

Specification Operating Pressure	25 PSIG
CSA International Evaluation Report - Max Operating Pressure, 3/8" through 1-1/4"	125 PSIG

Temperature Ratings

Operating Temperature Range	-20 to 200 Deg F
Tubing Melting Point	2400 Deg F
Jacket Melting Point	350 Deg F



Codes

ICC Codes (IFGC, IRC, IMC, IPC), NFPA 54, UPC, CAN/CSA B149.1, NFPA 58

Standards

ANSI LC1 / CSA 6.26, ANSI Z223.1

Listings

CSA, ICC PMG 1052, IAPMO (UPC) File No. 4665

Dimensional Information

✓	Size	*P/N	EHD	OD w/ Jacket (Nom. in.)	OD w/o Jacket (Nom. in.)	ID (Nom. In.)	Tubing Wall Thickness (in.)	Weight (lbs/ft)
<input type="checkbox"/>	3/8"	FGP-UGP-375-XXX	15	0.820	0.600	0.440	0.010	0.23
<input type="checkbox"/>	1/2"	FGP-UGP-500-XXX	19	1.080	0.788	0.597	0.010	0.33
<input type="checkbox"/>	3/4"	FGP-UGP-750-XXX	25	1.320	1.040	0.820	0.010	0.43
<input type="checkbox"/>	1"	FGP-UGP-100-XXX	31	1.600	1.315	1.060	0.010	0.57
<input type="checkbox"/>	1-1/4"	FGP-UGP-125-XXX	37	1.960	1.600	1.290	0.012	0.91
<input type="checkbox"/>	1-1/2"	FGP-UGP-150-XXX	46	2.180	1.840	1.525	0.012	1.00
<input type="checkbox"/>	2"	FGP-UGP-200-XXX	62	2.800	2.415	2.060	0.012	1.47

*XXX - Denotes Reel size (length of pipe) in feet

Omega Flex, Inc. * 451 Creamery Way* Exton, PA 19341

Tel: 610-524-7272 * Toll Free: 800-671-8622 * Fax: 610-524-7282

www.omegaflex.com

Product

AutoFlare Straight Fitting (Male-NPT) Assembly for TracPipe and CounterStrike

Project Information

Job Name:	Date Submitted:
Location:	Submitted By:
Engineer:	Approved By:
Contractor:	Manufacturer's Rep:

Installation

Must be installed in accordance with the TracPipe Design Guide and Installation Instructions and all applicable codes

Application Information

Transition fitting between TracPipe or CounterStrike Tubing and NPT thread. Fitting thread is Male NPT. For use indoor, outdoor, and concealed location applications.

Technical Data

Materials

Nut, Adapter, and Split Rings	Yellow Brass
Insert and 1" Split Rings	Stainless Steel

Pressure Ratings (used with tubing)

Specification Operating Pressure	25 PSIG
CSA International Evaluation Report - Max Operating Pressure, 3/8" through 1-1/4"	125 PSIG

Temperature Ratings (used with tubing)

Operating Temperature Range	-20 to 200 Deg F
-----------------------------	------------------



Codes

ICC Codes (IFGC, IRC, IMC, IPC), NFPA 54, UPC, CAN/CSA B149.1, NFPA 58

Standards

ANSI LC1 / CSA 6.26. ANSI Z223.1

Listings

CSA, ICC PMG 1046 / 1058, IAPMO (UPC) File No. 3682 / ES ER-0227

Dimensional Information

✓			Diameter across flats (Nom. in.)	Fitting length (Nom. in.)	TracPipe or CounterStrike Size	Male NPT Pipe size	Weight (lbs)
Size	P/N						
<input type="checkbox"/> 3/8"	FGP-FST-375N		1"	2"	3/8"	3/8"	0.3
<input type="checkbox"/> 3/8"x1/2"	FGP-FST-375		1"	2"	3/8"	1/2"	0.4
<input type="checkbox"/> 1/2"	FGP-FST-500		1-1/8"	2"	1/2"	1/2"	0.4
<input type="checkbox"/> 1/2"x3/4"	FGP-RST500-750		1-1/8"	2"	1/2"	3/4"	0.4
<input type="checkbox"/> 3/4"	FGP-FST-750		1-3/8"	2-1/8"	3/4"	3/4"	0.5
<input type="checkbox"/> 3/4"x1/2"	FGP-RST750-500		1-3/8"	2"	3/4"	1/2"	0.5
<input type="checkbox"/> 1"	FGP-FST-1000		1-5/8"	2-3/8"	1"	1"	0.7
<input type="checkbox"/> 1"x3/4"	FGP-RST1000-750		1-5/8"	2-1/8"	1"	3/4"	0.7
<input type="checkbox"/> 1-1/4"	FGP-FST-1250		2-1/8"	2-5/8"	1-1/4"	1-1/4"	1.5
<input type="checkbox"/> 1-1/2"	FGP-FST-1500		2-1/2"	3"	1-1/2"	1-1/2"	2.1
<input type="checkbox"/> 2"	FGP-FST-2000		3-1/4"	3-1/16"	2"	2"	3.5

Omega Flex, Inc. * 451 Creamery Way* Exton, PA 19341

Tel: 610-524-7272 * Toll Free: 800-671-8622 * Fax: 610-524-7282

www.omegaflex.com

Product

AutoFlare Straight Fitting (Female-NPT) Assembly for TracPipe and CounterStrike

Project Information

Job Name:	Date Submitted:
Location:	Submitted By:
Engineer:	Approved By:
Contractor:	Manufacturer's Rep:

Installation

Must be installed in accordance with the TracPipe Design Guide and Installation Instructions and all applicable codes

Application Information

Transition fitting between TracPipe or CounterStrike Tubing and NPT thread.
Fitting thread is Female NPT. For use indoor, outdoor, and concealed location applications.

Technical Data

Materials

Nut, Adapter, and Split Rings	Yellow Brass
Insert and 1" Split Rings	Stainless Steel

Pressure Ratings (used with tubing)

Specification Operating Pressure	25 PSIG
CSA International Evaluation Report - Max Operating Pressure, 3/8" through 1-1/4"	125 PSIG

Temperature Ratings (used with tubing)

Operating Temperature Range	-20 to 200 Deg F
-----------------------------	------------------



Codes

ICC Codes (IFGC, IRC, IMC, IPC), NFPA 54, UPC, CAN/CSA B149.1, NFPA 58

Standards

ANSI LC1 / CSA 6.26 ANSI Z223.1

Listings

CSA, ICC PMG 1046 / 1058, IAPMO (UPC) File No. 3682 / ES ER-0227

Dimensional Information

✓			Diameter across flats (Nom. in.)	Fitting length (Nom. in.)	TracPipe or CounterStrike Size	Female NPT Pipe size	Weight (lbs)
Size	P/N						
<input type="checkbox"/> 3/8"x1/2"	FGP-FSTF-375		1"	1-7/16"	3/8"	1/2"	0.2
<input type="checkbox"/> 1/2"	FGP-FSTF-500		1-1/8"	1-1/2"	1/2"	1/2"	0.3
<input type="checkbox"/> 3/4"	FGP-FSTF-750		1-3/8"	1-3/4"	3/4"	3/4"	0.5
<input type="checkbox"/> 1"	FGP-FSTF-1000		1-5/8"	1-3/4"	1"	1"	0.6

Omega Flex, Inc. * 451 Creamery Way* Exton, PA 19341

Tel: 610-524-7272 * Toll Free: 800-671-8622 * Fax: 610-524-7282

www.omegaflex.com

FGP-SUB-005

Rev. 03-11

TracPipe, CounterStrike, PS-II, AutoFlare, and AutoTrip are registered trademarks of Omega Flex, Inc.

page 1/1

Product								
AutoFlare Coupling Assembly for TracPipe and CounterStrike								
Project Information								
Job Name:			Date Submitted:					
Location:			Submitted By:					
Engineer:			Approved By:					
Contractor:			Manufacturer's Rep:					
Installation								
Must be installed in accordance with the TracPipe Design Guide and Installation Instructions and all applicable codes								
Application Information								
Coupling fitting for use between like sizes of TracPipe or CounterStrike Tubing. For indoor, outdoor, and concealed location applications.								
Technical Data								
<u>Materials</u>								
<table border="0"> <tr> <td>Nut, Adapter, and Split Rings</td> <td>Yellow Brass</td> </tr> <tr> <td>Insert and 1" Split Rings</td> <td>Stainless Steel</td> </tr> </table>							Nut, Adapter, and Split Rings	Yellow Brass
Nut, Adapter, and Split Rings	Yellow Brass							
Insert and 1" Split Rings	Stainless Steel							
<u>Pressure Ratings (used with tubing)</u>								
Specification Operating Pressure			25 PSIG CSA International Evaluation Report -					
Max Operating Pressure, 3/8" through 1-1/4"			125 PSIG					
<u>Temperature Ratings (used with tubing)</u>								
Operating Temperature Range			-20 to 200 Deg F					
Codes								
ICC Codes (IFGC, IRC, IMC, IPC), NFPA 54, UPC, CAN/CSA B149.1, NFPA 58								
Standards								
ANSI LC1 / CSA 6.26, ANSI Z223.1								
Listings								
CSA, ICC PMG 1046 / 1058, IAPMO (UPC) File No. 3682 / ES ER-0227								
Dimensional Information								
✓	Size	P/N	Diameter across flats (Nom. in.)	Fitting length (Nom. in.)	TracPipe or CounterStrike Size	Weight (lbs)		
<input type="checkbox"/>	3/8"	FGP-CPLG-375	1"	2"	3/8" X 3/8"	0.3		
<input type="checkbox"/>	1/2"	FGP-CPLG-500	1-1/8"	2-1/16"	1/2" X 1/2"	0.5		
<input type="checkbox"/>	3/4"	FGP-CPLG-750	1-3/8"	2-1/4"	3/4" X 3/4"	0.7		
<input type="checkbox"/>	1"	FGP-CPLG-1000	1-5/8"	2-11/32"	1" X 1"	0.9		
<input type="checkbox"/>	1-1/4"	FGP-CPLG-1250	2-1/8"	2-7/8"	1-1/4" X 1-1/4"	2.0		
<input type="checkbox"/>	1-1/2"	FGP-CPLG-1500	2-1/2"	3-3/8"	1-1/2" X 1-1/2"	3.3		
<input type="checkbox"/>	2"	FGP-CPLG-2000	3-1/4"	3-5/8"	2" X 2"	5.5		

Product
Flange Fitting (Male- NPT) Assembly for TracPipe and CounterStrike
Project Information

Job Name:	Date Submitted:
Location:	Submitted By:
Engineer:	Approved By:
Contractor:	Manufacturer's Rep:

Installation

Must be installed in accordance with the TracPipe Design Guide and Installation Instructions and all applicable codes

Application Information

Termination fitting between TracPipe or CounterStrike Tubing and NPT thread.
Fitting thread is Male NPT. For use indoor, outdoor, and concealed location applications.

Technical Data
Materials

Nut, Adapter, Flange and Split Rings	Yellow Brass
Insert and 1" Split Rings	Stainless Steel

Pressure Ratings (used with tubing)

Specification Operating Pressure	25 PSIG
CSA International Evaluation Report - Max Operating Pressure, 3/8" through 1-1/4"	125 PSIG

Temperature Ratings (used with tubing)

Operating Temperature Range	-20 to 200 Deg F
-----------------------------	------------------


Codes

ICC Codes (IFGC, IRC, IMC, IPC), NFPA 54, UPC, CAN/CSA B149.1, NFPA 58

Standards

ANSI LC1 / CSA 6.26, ANSI 223.1

Listings

CSA, ICC PMG 1046 / 1058, IAPMO (UPC) File No. 3682 / ES ER-0227

Dimensional Information

✓			Diameter across flats (Nom. in.)	Fitting length (Nom. in.)	TracPipe or CounterStrike Size	Flange Diameter	Weight (lbs)
Size	P/N						
<input type="checkbox"/> 3/8"	FGP-BFF-375		1"	2-5/8"	3/8"	3-1/4"	0.7
<input type="checkbox"/> 1/2"	FGP-BFF-500		1-1/8"	2-5/8"	1/2"	3-1/4"	0.7
<input type="checkbox"/> 3/4"	FGP-BFF-750		1-3/8"	2-11/16"	3/4"	3-7/16"	1.3
<input type="checkbox"/> 1"	FGP-BFF-1000		1-5/8"	3"	1"	3-7/16"	1.5
<input type="checkbox"/> 1-1/4"	FGP-BFF-1250		2-1/8"	3-1/2"	1-1/4"	4"	2.6

Omega Flex, Inc. * 451 Creamery Way* Exton, PA 19341

Tel: 610-524-7272 * Toll Free: 800-671-8622 * Fax: 610-524-7282

www.omegaflex.com

Product
Mounting Bracket for Flange Fitting Assembly (optional)
Project Information

Job Name:	Date Submitted:
Location:	Submitted By:
Engineer:	Approved By:
Contractor:	Manufacturer's Rep:

Installation

Must be installed in accordance with the TracPipe Design Guide and Installation Instructions and all applicable codes

Application Information

May be used for rigid mounting of a TracPipe or CounterStrike Flange Fitting. For indoor, outdoor and concealed location applications.

Technical Data
Materials

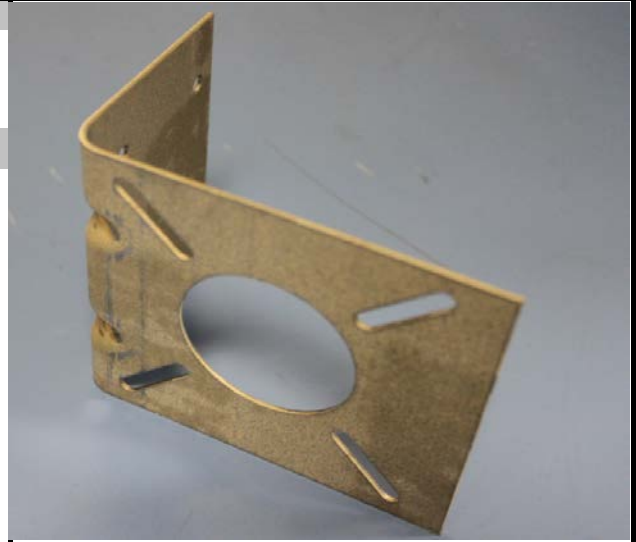
Galvanized Steel

Pressure Ratings (used with tubing)

N/A

Temperature Ratings (used with tubing)

Operating Temperature Range -20 to 200 Deg F


Codes
Standards
Listings
Dimensional Information

			TracPipe or CounterStrike		
			Size	Weight (lbs)	
✓	Size	P/N	L x W x D		
<input type="checkbox"/>	ALL	FGP-TERM BRAC	5" x 5" x 2-3/4"	3/8" thru 1-1/4"	0.3

Omega Flex, Inc. * 451 Creamery Way* Exton, PA 19341

Tel: 610-524-7272 * Toll Free: 800-671-8622 * Fax: 610-524-7282

www.omegaflex.com

Product

90° Flange Fitting (Male - NPT) Assembly for TracPipe or CounterStrike

Project Information

Job Name:	Date Submitted:
Location:	Submitted By:
Engineer:	Approved By:
Contractor:	Manufacturer's Rep:

Installation

Must be installed in accordance with the TracPipe Design Guide and Installation Instructions and all applicable codes

Application Information

Termination fitting for rigid mounting of TracPipe or CounterStrike Tubing and provide a NPT thread. Fitting thread is Male NPT. For use indoor, outdoor, and concealed location applications.

Technical Data

Materials

Nut, Adapter, Flange and Split Rings	Yellow Brass
Insert	Stainless Steel

Pressure Ratings (used with tubing)

Specification Operating Pressure	25 PSIG
CSA International Evaluation Report - Max Operating Pressure, 3/8" and 1/2"	125 PSIG

Temperature Ratings (used with tubing)

Operating Temperature Range	-20 to 200 Deg F
-----------------------------	------------------



Codes

ICC Codes (IFGC, IRC, IMC, IPC), NFPA 54, UPC, CAN/CSA B149.1, NFPA 58

Standards

ANSI LC1 / CSA 6.26 ANSI Z223.1

Listings

CSA, ICC PMG 1046 / 1058, IAPMO (UPC) File No. 3682 / ES ER-0227

Dimensional Information

✓				Diameter across flats (Nom. in.)	Length (Nom. in.)	TracPipe or CounterStrike Size	Flange Diameter	Weight (lbs)
Size	P/N							
<input type="checkbox"/> 3/8"	FGP-ELLB-375			1"	2-11/16"	3/8"	3-1/4"	1.1
<input type="checkbox"/> 1/2"	FGP-ELLB-500			1-1/8"	2-11/16"	1/2"	3-1/4"	1.0

Omega Flex, Inc. * 451 Creamery Way* Exton, PA 19341

Tel: 610-524-7272 * Toll Free: 800-671-8622 * Fax: 610-524-7282

www.omegaflex.com

FGP-SUB-009

Rev. 03-11

TracPipe, CounterStrike, PS-II, AutoFlare, and AutoTrip are registered trademarks of Omega Flex, Inc.

page 1/1

Product
90° Flange Fitting (Valve - Female NPT) Assembly for TracPipe or CounterStrike
Project Information

Job Name:	Date Submitted:
Location:	Submitted By:
Engineer:	Approved By:
Contractor:	Manufacturer's Rep:

Installation

Must be installed in accordance with the TracPipe Design Guide and Installation Instructions and all applicable codes

Application Information

Termination fitting between TracPipe or CounterStrike tubing and Appliance Shut-off Valve with NPT thread. Fitting thread is Female NPT. For indoor use only.

Technical Data
Materials

Nut, Adapter, Flange and Split Rings	Yellow Brass
Insert	Stainless Steel
Valve Body	Plated Brass

Pressure Ratings (used with tubing)

Specification Operating Pressure	1/2 PSIG
Max Test Pressure	60 PSIG

Temperature Ratings (used with tubing)

Operating Temperature Range	32 to 125 Deg F
-----------------------------	-----------------


Codes

ICC Codes (IFGC, IRC, IMC, IPC), NFPA 54, UPC, CAN/CSA B149.1, NFPA 58

Standards

ANSI LC1 / CSA 6.26, ANSI Z21.15, ANSI Z223.1

Listings

CSA, ICC PMG 1046 / 1058, IAPMO (UPC) File No. 3682 / ES ER-0227

Dimensional Information

✓			Diameter across flats (Nom. in.)	Fitting length (Nom. in.)	TracPipe or CounterStrike Size	Flange Diameter	Weight (lbs)
Size	P/N						
<input type="checkbox"/> 3/8"	FGP-BF90V-375		1"	3-5/8"	3/8"	3-1/4"	1.2
<input type="checkbox"/> 1/2"	FGP-BF90V-500		1-1/8"	3-7/8"	1/2"	3-1/4"	1.20
<input type="checkbox"/> 3/4"	FGP-BF90V-750		1-3/8"	4-3/4"	3/4"	3-7/16"	1.7

Omega Flex, Inc. * 451 Creamery Way* Exton, PA 19341

Tel: 610-524-7272 * Toll Free: 800-671-8622 * Fax: 610-524-7282

www.omegaflex.com

Product

Termination Mount (Male - NPT) Assembly for TracPipe and CounterStrike

Project Information

Job Name:	Date Submitted:
Location:	Submitted By:
Engineer:	Approved By:
Contractor:	Manufacturer's Rep:

Installation

Must be installed in accordance with the TracPipe Design Guide and Installation Instructions and all applicable codes

Application Information

Termination fitting between TracPipe or CounterStrike Tubing and NPT thread.
Fitting thread is Male NPT. For use indoor, outdoor, and concealed location applications.

Technical Data

Materials

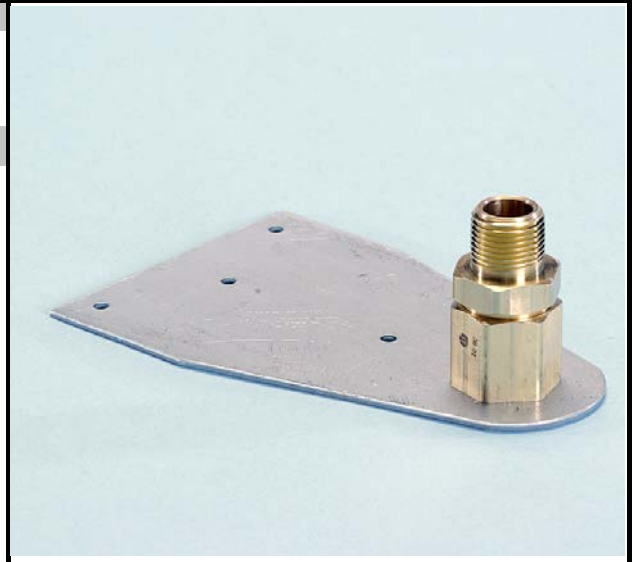
Nut, Adapter, and Split Rings	Yellow Brass
Insert	Stainless Steel
Mounting Bracket	Galvanized Steel

Pressure Ratings (used with tubing)

Specification Operating Pressure	25 PSIG
CSA Internatiional Evaluation Report - Max Opreating Pressure, 3/8" through 1"	125 PSIG

Temperature Ratings (used with tubing)

Operating Temperature Range	-20 to 200 Deg F
-----------------------------	------------------



Codes

ICC Codes (IFGC, IRC, IMC, IPC), NFPA 54, UPC, CAN/CSA B149.1, NFPA 58

Standards

ANSI LC1 / CSA 6.26, ANSI Z21.15, ANSI Z223.1

Listings

CSA, ICC PMG 1046 / 1058, IAPMO (UPC) File No. 3682 / ES ER-0227

Dimensional Information

✓			Diameter across flats (Nom. in.)	L X W X H	TracPipe or CounterStrike	
	Size	P/N			Size	Weight (lbs)
<input type="checkbox"/>	3/8"	FGP-TM-375	1"	6-3/8" X 4" X 2-3/8"	3/8"	0.9
<input type="checkbox"/>	1/2"	FGP-TM-500	1-1/8"	6-3/8" X 4" X 2-7/16"	1/2"	1
<input type="checkbox"/>	3/4"	FGP-TM-750	1-3/8"	6-3/8" X 4" X 2-1/2"	3/4"	1.1
<input type="checkbox"/>	3/4" x 1/2"	FGP-TM-750-500	1-3/8"	6-3/8" X 4" X 2-1/2"	3/4"	1.1
<input type="checkbox"/>	1"	FGP-TM-1000	1-5/8"	6-3/8" X 4" X 2-3/4"	1"	1.3

Omega Flex, Inc. * 451 Creamery Way* Exton, PA 19341

Tel: 610-524-7272 * Toll Free: 800-671-8622 * Fax: 610-524-7282

www.omegaflex.com

Product

90° Termination Mount (Male - NPT) Assembly for TracPipe and CounterStrike

Project Information

Job Name:	Date Submitted:
Location:	Submitted By:
Engineer:	Approved By:
Contractor:	Manufacturer's Rep:

Installation

Must be installed in accordance with the TracPipe Design Guide and Installation Instructions and all applicable codes

Application Information

Termination fitting between TracPipe or CounterStrike Tubing and NPT thread.
Fitting thread is Male NPT. For use indoor, outdoor, and concealed location applications.

Technical Data

Materials

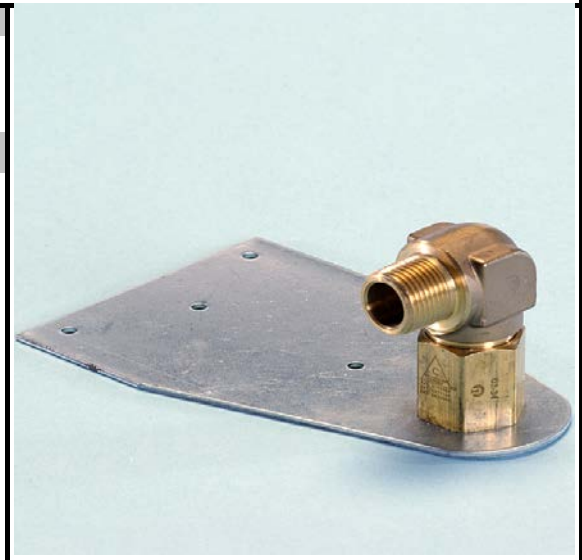
Nut, Adapter, and Split Rings	Yellow Brass
Insert	Stainless Steel
Mounting Bracket	Galvanized Steel

Pressure Ratings (used with tubing)

Specification Operating Pressure	25 PSIG
CSA International Evaluation Report - Max Operating Pressure, 3/8" and 1/2"	125 PSIG

Temperature Ratings (used with tubing)

Operating Temperature Range	-20 to 200 Deg F
-----------------------------	------------------



Codes

ICC Codes (IFGC, IRC, IMC, IPC), NFPA 54, UPC, CAN/CSA B149.1, NFPA 58

Standards

ANSI LC1 / CSA 6.26, ANSI Z223.1

Listings

CSA, ICC PMG 1046 / 1058, IAPMO (UPC) File No. 3682 / ES ER-0227

Dimensional Information

✓			Diameter across flats (Nom. in.)	L X W X H	TracPipe or CounterStrike Size	Weight (lbs)
Size	P/N					
<input type="checkbox"/> 3/8"	FGP-90TM-375		1"	6-3/8" x 4" x 2-1/2"	3/8"	1.2
<input type="checkbox"/> 1/2"	FGP-90TM-500		1-1/8"	6-3/8" x 4" x 2-9/16"	1/2"	1.2

Omega Flex, Inc. * 451 Creamery Way* Exton, PA 19341

Tel: 610-524-7272 * Toll Free: 800-671-8622 * Fax: 610-524-7282

www.omegaflex.com

Product

90° Termination Mount (Valve - Female NPT) Assembly for TracPipe or CounterStrike

Project Information

Job Name:	Date Submitted:
Location:	Submitted By:
Engineer:	Approved By:
Contractor:	Manufacturer's Rep:

Installation

Must be installed in accordance with the TracPipe Design Guide and Installation Instructions and all applicable codes

Application Information

Termination fitting between TracPipe or CounterStrike Tubing with appliance shut-off valve and NPT thread. Fitting thread is Female NPT. For indoor use only.

Technical Data

Materials

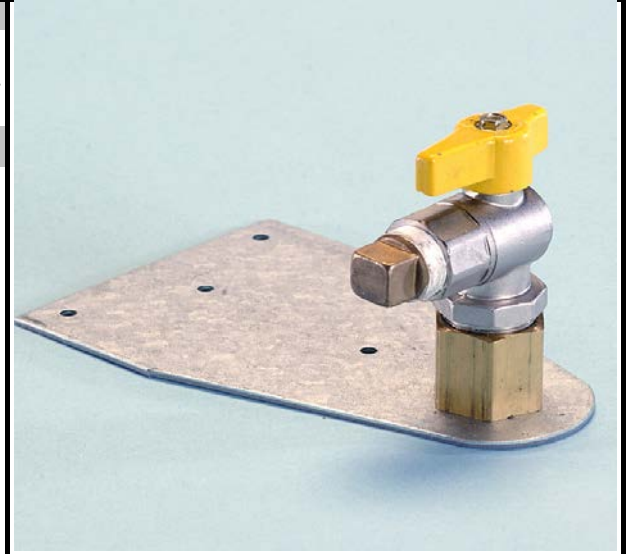
Nut, Adapter, and Split Rings	Yellow Brass
Insert	Stainless Steel
Mounting Bracket	Galvanized Steel
Valve Body	Plated Brass

Pressure Ratings (used with tubing)

Specification Operating Pressure	1/2 PSIG
Max Test Pressure	60 PSIG

Temperature Ratings (used with tubing)

Operating Temperature Range	32 to 125 Deg F
-----------------------------	-----------------



Codes

ICC Codes (IFGC, IRC, IMC, IPC), NFPA 54, UPC, CAN/CSA B149.1, NFPA 58

Standards

ANSI LC1 / CSA 6.26, ANSI Z21.15, ANSI Z223.1

Listings

CSA, ICC PMG 1046 / 1058, IAPMO (UPC) File No. 3682 /ES ER-0227

Dimensional Information

✓			Diameter across flats (Nom. in.)	L X W X H	TracPipe or CounterStrike Size	Weight (lbs)
Size	P/N					
<input type="checkbox"/> 3/8"	FGP-TM90V-375		1"	6-3/8" x 4" x 3-1/2"	3/8"	1.3
<input type="checkbox"/> 1/2"	FGP-TM90V-500		1-1/8"	6-3/8" x 4" x 3-3/4"	1/2"	1.3
<input type="checkbox"/> 3/4"	FGP-TM90V-750		1-3/8"	6-3/8" x 4" x 4-9/16"	3/4"	1.7

Omega Flex, Inc. * 451 Creamery Way* Exton, PA 19341

Tel: 610-524-7272 * Toll Free: 800-671-8622 * Fax: 610-524-7282

www.omegaflex.com

Product

Tee Fitting Tubing by Pipe Outlet for TracPipe and CounterStrike

Project Information

Job Name:	Date Submitted:
Location:	Submitted By:
Engineer:	Approved By:
Contractor:	Manufacturer's Rep:

Installation

Must be installed in accordance with the TracPipe Design Guide and Installation Instructions and all applicable codes

Application Information

Tee fittings for TracPipe and CounterStrike. Tubing Runs by Pipe Branch. Branch Thread is NPT

Technical Data

Materials

Nut, Adapter, and Split Rings	Yellow Brass
Insert and 1" Split Rings	Stainless Steel

Pressure Ratings (used with tubing)

Specification Operating Pressure	25 PSIG
CSA International Evaluation Report - Max Operating Pressure	125 PSIG

Temperature Ratings (used with tubing)

Operating Temperature Range	-20 to 200 Deg F
-----------------------------	------------------

Codes

ICC Codes (IFGC, IRC, IMC, IPC), NFPA 54, UPC, CAN/CSA B149.1, NFPA 58

Standards

ANSI LC1 / CSA 6.26, ANSI Z223.1

Listings

CSA, ICC PMG 1046 / 1058, IAPMO (UPC) File No. 3682 / ES ER-0227

Dimensional Information

✓	Size	P/N	NPT	Diameter across flats (Nom. in.)	TracPipe or CounterStrike Size	Weight (lbs)
<input type="checkbox"/>	1/2"	FGP-T500-750	3/4" MNPT	1-1/8"	1/2"	1
<input type="checkbox"/>	1/2"	FGP-T500-500	1/2" FNPT	1-1/8"	1/2"	1
<input type="checkbox"/>	3/4"	FGP-T750-500	1/2" FNPT	1-3/8"	3/4"	1.6
<input type="checkbox"/>	3/4"	FGP-T750-750	3/4" FNPT	1-3/8"	3/4"	1.6
<input type="checkbox"/>	1"	FGP-T1000-1000	1" FNPT	1-5/8"	1"	2.2



Omega Flex, Inc. * 451 Creamery Way* Exton, PA 19341

Tel: 610-524-7272 * Toll Free: 800-671-8622 * Fax: 610-524-7282

www.omegaflex.com

Product
Tee Fitting Tubing by Tubing for TracPipe and CounterStrike
Project Information

Job Name:	Date Submitted:
Location:	Submitted By:
Engineer:	Approved By:
Contractor:	Manufacturer's Rep:

Installation

Must be installed in accordance with the TracPipe Design Guide and Installation Instructions and all applicable codes

Application Information
Technical Data
Materials

Nut, Adapter, and Split Rings	Yellow Brass
Insert and 1" Split Rings	Stainless Steel

Pressure Ratings (used with tubing)

Specification Operating Pressure	25 PSIG CSA International
Evaluation Report - Max Operating Pressure, 3/8" through 1-1/4"	
125 PSIG	

Temperature Ratings (used with tubing)

Operating Temperature Range	-20 to 200 Deg F
-----------------------------	------------------


Codes

ICC Codes (IFGC, IRC, IMC), NFPA 54 / ANSI Z223.1, UPC, CAN/CSA B149.1, NFPA 58

Standards

ANSI LC1 / CSA 6.26, ANSI Z223.1

Listings

CSA, ICC PMG 1046 / 1052 / 1058, IAPMO (UPC) File No. 3682, / ES ER-02257

Dimensional Information

✓	Size	P/N	R X R X B Sizes TracPipe or CounterStrike Sizes	Diameter Across Hex Flats X R X B In.)	R (Nom.)	Weight (lbs.)
<input type="checkbox"/>	1/2"	FGP-TF500-T500	1/2" x 1/2" x 1/2"	1-1/8" x 1-1/8" x 1-1/8"		1.0
<input type="checkbox"/>	3/4"	FGP-TF750-T500	3/4" x 3/4" x 3/4"	1-3/8" x 1-3/8" x 1-3/8"		1.6
<input type="checkbox"/>	1"	FGP-TF1000-T1000	1" x 1" x 1"	1-5/8" x 1-5/8" x 1-5/8"		2.2
<input type="checkbox"/>	1/2"	FGP-RT-501	1/2" x 3/8" x 3/8"	1-1/8" x 1" x 1"		0.9
<input type="checkbox"/>	3/4"	FGP-RT-751	3/4" x 1/2" x 3/8"	1-3/8" x 1-1/8" x 1"		1.1
<input type="checkbox"/>	3/4"	FGP-RT-752	3/4" x 1/2" x 1/2"	1-3/8" x 1-1/8" x 1-1/8"		1.1
<input type="checkbox"/>	1"	FGP-RT-1001	1" x 3/4" x 1/2"	1-5/8" x 1-3/8" x 1-1/8"		1.8
<input type="checkbox"/>	1"	FGP-RT-1002	1" x 3/4" x 3/4"	1-5/8" x 1-3/8" x 1-3/8"		1.8
<input type="checkbox"/>	3/4"	FGP-TF750-T500	3/4" x 3/4" x 1/2"	1-3/8" x 1-3/8" x 1-1/8"		1.6
<input type="checkbox"/>	1"	FGP-TF1000-T750	1" x 1" x 3/4"	1-5/8" x 1-5/8" x 1-3/8"		2.1
<input type="checkbox"/>	1"	FGP-TF1000-T500	1" x 1" x 1/2"	1-5/8" x 1-5/8" x 1-1/8"		2.2
<input type="checkbox"/>	1-1/4"	FGP-TF1250-T1000	1-1/4" x 1-1/4" x 1"	2-1/8" x 2-1/8" x 1-5/8"		2.7
<input type="checkbox"/>	1-1/4"	FGP-TF1250-T750	1-1/4" x 1-1/4" x 3/4"	2-1/8" x 2-1/8" x 1-3/8"		2.6

OmegaFlex, Inc. * 451 Creamery Way* Exton, PA 19341

Tel: 610-524-7272 * Toll Free: 800-671-8622 * Fax: 610-524-7282

www.omegaflex.com

Product

Tee Fitting Tubing by Tubing for TracPipe and CounterStrike

Project Information

Job Name:	Date Submitted:
Location:	Submitted By:
Engineer:	Approved By:
Contractor:	Manufacturer's Rep:

Installation

Must be installed in accordance with the TracPipe Design Guide and Installation Instructions and all applicable codes

✓	Size	P/N	R X R X B Sizes TracPipe or CounterStrike Sizes	Diameter Across Hex Flats X R X B In.)	R (Nom.)	Weight (lbs.)
<input type="checkbox"/>	1-1/4"	FGP-1250-T500	1-1/4" X 1-1/4" X 1/2"	2-1/8" X 2-1/8" X 1-1/8"		2.6
<input type="checkbox"/>	1-1/4"	FGP-RT-1251	1-1/4" X 1" X 1"	2-1/8" X 1-5/8" X 1-5/8"		2.2
<input type="checkbox"/>	1-1/4"	FGP-RT-1252	1-1/4" X 1" X 3/4"	2-1/8" X 1-5/8" X 1-3/8"		2.2
<input type="checkbox"/>	1-1/4"	FGP-RT-1253	1-1/4" X 1" X 1/2"	2-1/8" X 1-5/8" X 1-1/8"		2.1
<input type="checkbox"/>	1-1/2"	FGP-TF1500-T1250	1-1/2" X 1-1/2" X 1-1/4"	2-1/2" X 2-1/2" X 2-1/8"		4.4
<input type="checkbox"/>	1-1/2"	FGP-TF1500-T1000	1-1/2" X 1-1/2" X 1"	2-1/2" X 2-1/2" X 1-5/8"		4.1
<input type="checkbox"/>	1-1/2"	FGP-TF1500-T750	1-1/2" X 1-1/2" X 3/4"	2-1/2" X 2-1/2" X 1-3/8"		4.1
<input type="checkbox"/>	1-1/2"	FGP-TF1500-T500	1-1/2" X 1-1/2" X 1/2"	2-1/2" X 2-1/2" X 1-1/8"		4.0
<input type="checkbox"/>	1-1/2"	FGP-RT-1502	1-1/2" X 1-1/4" X 1-1/4"	2-1/2" X 2-1/8" X 2-1/8"		3.7
<input type="checkbox"/>	1-1/2"	FGP-RT-1502	1-1/2" X 1-1/4" X 1"	2-1/2" X 2-1/8" X 1-5/8"		3.6
<input type="checkbox"/>	1-1/2"	FGP-RT-1503	1-1/2" X 1-1/4" X 3/4"	2-1/2" X 2-1/8" X 1-3/8"		3.6
<input type="checkbox"/>	1-1/2"	FGP-RT-1504	1-1/2" X 1-1/4" X 1/2"	2-1/2" X 2-1/8" X 1-1/8"		3.5
<input type="checkbox"/>	2"	FGP-TF2000-T1500	2" X 2" X 1-1/2"	3-1/4" X 3-1/4" X 2-1/2"		7.4
<input type="checkbox"/>	2"	FGP-TF2000-T1250	2" X 2" X 1-1/4"	3-1/4" X 3-1/4" X 2-1/8"		7.2
<input type="checkbox"/>	2"	FGP-TF2000-T1000	2" X 2" X 1"	3-1/4" X 3-1/4" X 1-5/8"		7.0
<input type="checkbox"/>	2"	FGP-TF2000-T750	2" X 2" X 3/4"	3-1/4" X 3-1/4" X 1-3/8"		7.0
<input type="checkbox"/>	2"	FGP-TF2000-T500	2" X 2" X 1/2"	3-1/4" X 3-1/4" X 1-1/8"		7.0
<input type="checkbox"/>	2"	FGP-RT-2001	2" X 1-1/2" X 1-1/2"	3-1/4" X 2-1/2" X 2-1/2"		6.5
<input type="checkbox"/>	2"	FGP-RT-2002	2" X 1-1/2" X 1-1/4"	3-1/4" X 2-1/2" X 2-1/8"		6.3
<input type="checkbox"/>	2"	FGP-RT-2003	2" X 1-1/2" X 1"	3-1/4" X 2-1/2" X 1-5/8"		6.1
<input type="checkbox"/>	2"	FGP-RT-2004	2" X 1-1/2" X 3/4"	3-1/4" X 2-1/2" X 1-3/8"		6.1
<input type="checkbox"/>	2"	FGP-RT-2005	2" X 1-1/2" X 1/2"	3-1/4" X 2-1/2" X 1-1/8"		6.1

OmegaFlex, Inc. * 451 Creamery Way* Exton, PA 19341

Tel: 610-524-7272 * Toll Free: 800-671-8622 * Fax: 610-524-7282

www.omegaflex.com

Product

Key Valve Bracket Assembly for TracPipe and CounterStrike

Project Information

Job Name:	Date Submitted:
Location:	Submitted By:
Engineer:	Approved By:
Contractor:	Manufacturer's Rep:

Installation

Must be installed in accordance with the TracPipe Design Guide and Installation Instructions and all applicable codes

Application Information

Use for but not limited to rigid mount of fireplace key valve for TracPipe and CounterStrike. May be used indoor, outdoor and in concealed locations.

Technical Data

Materials

Nut, Adapter, and Split Rings	Yellow Brass
Insert	Stainless Steel
Bracket	Galvanized Steel

Pressure Ratings (used with tubing)

Specification Operating Pressure	25 PSIG
CSA International Evaluation Report - Max Operating Pressure	
3/8" through 3/4"	125 PSIG

Temperature Ratings (used with tubing)

Operating Temperature Range	-20 to 200 Deg F
-----------------------------	------------------



Codes

ICC Codes (IFGC, IRC, IMC, IPC), NFPA 54, UPC, CAN/CSA B149.1, NFPA 58

Standards

ANSI LC1 / CSA 6.26, ANSI Z223.1

Listings

CSA, ICC PMG 1046 / 1058, IAPMO (UPC) File No. 3682 / ES ER-0227

Dimensional Information

✓			Diameter across flats (Nom. in.)	TracPipe or CounterStrike Size	Weight (lbs)
Size	P/N				
<input type="checkbox"/> 3/8"	FGP-KVB-375		1"	3/8"	0.50
<input type="checkbox"/> 1/2"	FGP-KVB-500		1-1/8"	1/2"	0.54
<input type="checkbox"/> 3/4" x 1/2"	FGP-KVB750-500		1-3/8"	3/4"	0.77

Omega Flex, Inc. * 451 Creamery Way* Exton, PA 19341

Tel: 610-524-7272 * Toll Free: 800-671-8622 * Fax: 610-524-7282

www.omegaflex.com

Product
Meter Termination Stub-Out (Male - NPT)
Project Information

Job Name:	Date Submitted:
Location:	Submitted By:
Engineer:	Approved By:
Contractor:	Manufacturer's Rep:

Installation

Must be installed in accordance with the TracPipe Design Guide and Installation Instructions and all applicable codes

Application Information

Schedule 40 B.I.P. Meter Stub-Out

Technical Data
Materials

Schedule 40 Black Iron Pipe

Pressure Ratings (used with tubing)

Specification Operating Pressure 25 PSIG

CSA International Evaluation Report - Max Operating Pressure

3/8" through 3/4" 125 PSIG

Temperature Ratings (used with tubing)

Operating Temperature Range -20 to 200 Deg F


Codes

ICC Codes (IFGC, IRC, IMC, IPC), NFPA 54, UPC, CAN/CSA B149.1, NFPA 58

Standards
Listings
Dimensional Information

✓			Mounting Flange Dim (Nom. in.)	Fitting length (Nom. in.)	TracPipe or CounterStrike Size	Weight (lbs)
Size	P/N					
<input type="checkbox"/> 1" x 6"	FGP-1X6 MT		5" x 5"	6"	N/A	1.35
<input type="checkbox"/> 1" x 12"	FGP-1X12 MT		5" x 5"	12"	N/A	1.95

Omega Flex, Inc. * 451 Creamery Way* Exton, PA 19341

Tel: 610-524-7272 * Toll Free: 800-671-8622 * Fax: 610-524-7282

www.omegaflex.com

Product

Meter Stub Bracket

Project Information

Job Name:	Date Submitted:
Location:	Submitted By:
Engineer:	Approved By:
Contractor:	Manufacturer's Rep:

Installation

Must be installed in accordance with the TracPipe Design Guide and Installation Instructions and all applicable codes

Application Information

For use with FGP-MT Series Meter Terminations (optional) Fits between standard 16" O.C. framing

Technical Data

Materials

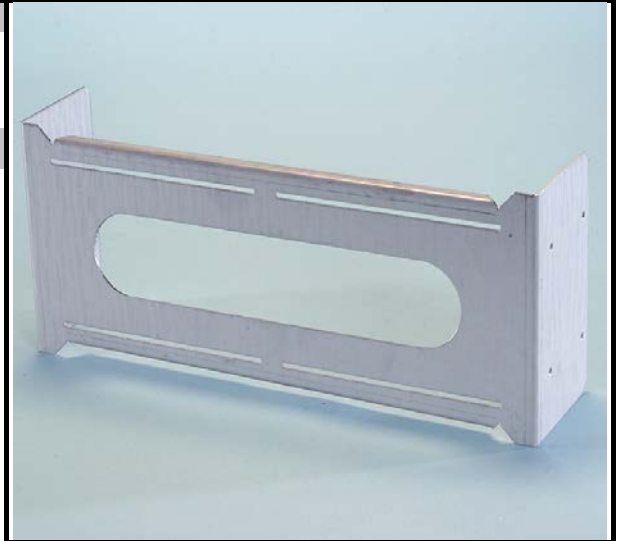
Galvanized Steel

Pressure Ratings (used with tubing)

N/A

Temperature Ratings (used with tubing)

Operating Temperature Range -20 to 200 Deg F



Codes

Standards

Listings

Dimensional Information



	Size	P/N	L x H x D	Weight (lbs)
<input type="checkbox"/>	All	FGP-STUD-BRAC	14-1/2" x 6" x 3-3/8"	2.1

Omega Flex, Inc. * 451 Creamery Way* Exton, PA 19341

Tel: 610-524-7272 * Toll Free: 800-671-8622 * Fax: 610-524-7282

www.omegaflex.com

Product

Appliance Stub Out for Use with TracPipe and CounterStrike

Project Information

Job Name:	Date Submitted:
Location:	Submitted By:
Engineer:	Approved By:
Contractor:	Manufacturer's Rep:

Installation

Must be installed in accordance with the TracPipe Design Guide and Installation Instructions and all applicable codes

Application Information

Schedule 40 B.I.P. stub out for use at movable appliance locations, with mounting plate

Technical Data

Materials

Schedule 40 B.I.P.

Mounting Plate 12 Ga. Carbon Steel

Pressure Ratings (used with tubing)

Specification Operating Pressure 25 PSIG

CSA International Evaluation Report - Max Operating Pressure,
3/8" through 1-1/4" 125 PSIG

Temperature Ratings (used with tubing)

Operating Temperature Range -20 to 200 Deg F



Codes

Standards

NPT Thread per ANSI B1.20.1

Listings

Dimensional Information

✓	Size	P/N	Mounting Flange Dim (Nom)	Fitting length (Nom. in.)	TracPipe or CounterStrike Size	Weight (lbs)
<input type="checkbox"/>	1/2"	FGP-ASP-500	5" x 5"	2-9/16"	1/2"	0.72

Omega Flex, Inc. * 451 Creamery Way* Exton, PA 19341

Tel: 610-524-7272 * Toll Free: 800-671-8622 * Fax: 610-524-7282

www.omegaflex.com

Product

Fireplace Stub-Out (Male - NPT) for Use with TracPipe and CounterStrike

Project Information

Job Name:	Date Submitted:
Location:	Submitted By:
Engineer:	Approved By:
Contractor:	Manufacturer's Rep:

Installation

Must be installed in accordance with the TracPipe Design Guide and Installation Instructions and all applicable codes

Application Information

Mounting plate with NPT B.I.P. Nipple. Angled to match the fireplace cabinet penetration requirements.

Technical Data

Materials

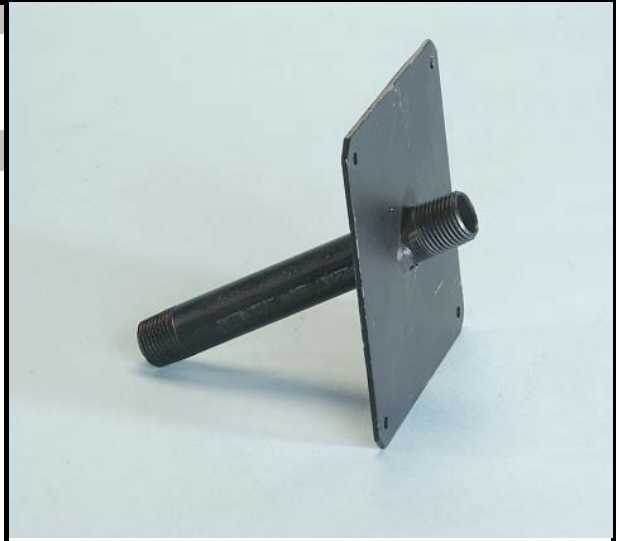
Schedule 40 B.I.P.
Mounting Plate 12 ga. Carbon Steel

Pressure Ratings (used with tubing)

Specification Operating Pressure	25 PSIG
CSA International Evaluation Report - Max Operating Pressure, 3/8" through 1-1/4"	125 PSIG

Temperature Ratings (used with tubing)

Operating Temperature Range	-20 to 200 Deg F
-----------------------------	------------------



Codes

Standards

NPT Threads per ANSI B1.20.1

Listings

Dimensional Information

			Flange Mount Dim (Nom)	Fitting length (Nom. in.)	TracPipe or CounterStrike Size	Weight (lbs)
✓						
<input type="checkbox"/>	Size 1/2"	P/N FGP-FPT-500	5" x 5"	5-1/2"	1/2"	0.72

Omega Flex, Inc. * 451 Creamery Way*Exton, PA 19341

Tel: 610-524-7272 * Toll Free: 800-671-8622 * Fax: 610-524-7282

www.omegaflex.com

Product

Meter Termination for use with TracPipe and CounterStrike

Project Information

Job Name:	Date Submitted:
Location:	Submitted By:
Engineer:	Approved By:
Contractor:	Manufacturer's Rep:

Installation

Must be installed in accordance with the TracPipe Design Guide and Installation Instructions and all applicable codes

Application Information

Meter Termination incorporating the AutoFlare fitting.

Technical Data

Materials

Nut, Adapter, Flange and Split Rings	Yellow Brass
Insert and 1" split rings	Stainless Steel
Mounting Plate & Pipe	Steel

Pressure Ratings (used with tubing)

Specification Operating Pressure	25 PSIG
CSA International Evaluation Report - Max Operating Pressure, 3/8" through 1-1/4"	125 PSIG

Temperature Ratings (used with tubing)

Operating Temperature Range	-20 to 200 Deg F
-----------------------------	------------------



Codes

ICC Codes (IFGC, IRC, IMC, IPC), NFPA 54, UPC, CAN/CSA B149.1, NFPA 58

Standards

ANSI LC1 / CSA 6.26, ANSI Z223.1

Listings

CSA, ICC PMG 1046 / 1058, IAPMO (UPC) File No. 3682 / ES ER-0227

Dimensional Information

✓			Diameter across flats (Nom. in.)		Fitting length (Nom. in.)	TracPipe or CounterStrike Size	Weight (lbs)
	Size	P/N	Nut	Body			
<input type="checkbox"/>	1/2"	FGP-MT6-500	1-5/8"	1-1/8"	6"	1/2"	1.8
<input type="checkbox"/>	3/4"	FGP-MT6-750	1-5/8"	1-3/8"	6"	3/4"	1.8
<input type="checkbox"/>	1"	FGP-MT6-1000	1-5/8"	1-5/8"	6"	1"	1.8
<input type="checkbox"/>	1"	FGP-MT9-1000	1-5/8"	1-5/8"	9"	1"	2.6
<input type="checkbox"/>	1/2"	FGP-MT12-500	1-5/8"	1-1/8"	12"	1/2"	2.6
<input type="checkbox"/>	3/4"	FGP-MT12-750	1-5/8"	1-3/8"	12"	3/4"	2.6
<input type="checkbox"/>	1"	FGP-MT12-1000	1-5/8"	1-5/8"	12"	1"	2.6

Omega Flex, Inc. * 451 Creamery Way* Exton, PA 19341

Tel: 610-524-7272 * Toll Free: 800-671-8622 * Fax: 610-524-7282

www.omegaflex.com

Product

Meter Termination Bracket for TracPipe and CounterStrike

Project Information

Job Name:	Date Submitted:
Location:	Submitted By:
Engineer:	Approved By:
Contractor:	Manufacturer's Rep:

Installation

Must be installed in accordance with the TracPipe Design Guide and Installation Instructions and all applicable codes

Application Information

Used with FGP-MT Meter Termination series

Technical Data

Materials

Galvanized Steel

Pressure Ratings (used with tubing)

N/A

Temperature Ratings (used with tubing)

Operating Temperature Range -20 to 200 Deg F



Codes

Standards

Listings

Dimensional Information

			TracPipe or CounterStrike	
Size	P/N	L x H x D	Size	Weight (lbs)
<input type="checkbox"/> All	FGP-MT-BRAC	5" x 5" x 2-3/4"	1/2" THRU 1"	0.8

Product

Metal Wall Box with 90° Valve Assembly for use with TracPipe and CounterStrike

Project Information

Job Name:	Date Submitted:
Location:	Submitted By:
Engineer:	Approved By:
Contractor:	Manufacturer's Rep:

Installation

Must be installed in accordance with the TracPipe Design Guide and Installation Instructions and all applicable codes

Application Information

Metal wall box with valve for use with zero clearance appliance installations. Reverse Mounting tabs to accommodate double sheetrock walls. For Indoor Use Only. Wall Box is Fire Rated to UL 1479.

Technical Data

Materials

Nut, Adapter, Flange and Split Rings	Yellow Brass
Insert	Stainless Steel
Wall Box	Powder Coated Steel

Pressure Ratings (used with tubing)

Specification Operating Pressure	1/2 PSIG
Max Test Pressure	60 PSIG

Temperature Ratings (used with tubing)

Operating Temperature Range	-20 to 200 Deg F
-----------------------------	------------------



Codes

ICC Codes (IFGC, IRC, IMC, IPC), NFPA 54, UPC, CAN/CSA B149.1, NFPA 58

Standards

ANSI LC1 / CSA 6.26, ANSI Z21.15, ANSI Z223.1, UL 1479

Listings

CSA, ICC PMG 1046 / 1058, IAPMO (UPC) File No. 3682 / ES ER-0227

Dimensional Information

✓			Diameter across flats (Nom. in.)		Box Dim L x H x		Valve Outlet	TracPipe or CounterStrike	
	Size	P/N	Nut	Valve Body	D	Trim Ring Dim	NPT	Size	Weight (lbs)
<input type="checkbox"/>	3/8"	FGP-WBTM-375	1"	1-1/8"	5" x 5" x 3-1/8"	6-3/4" x 6-3/4"	1/2"	3/8"	2.3
<input type="checkbox"/>	1/2"	FGP-WBTM-500	1-1/8"	1-1/8"	5" x 5" x 3-1/8"	6-3/4" x 6-3/4"	1/2"	1/2"	2.3
<input type="checkbox"/>	3/4"	FGP-WBTM-750	1-3/8"	1-3/8"	5" x 5" x 3-1/8"	6-3/4" x 6-3/4"	3/4"	3/4"	2.8

Omega Flex, Inc. * 451 Creamery Way* Exton, PA 19341

Tel: 610-524-7272 * Toll Free: 800-671-8622 * Fax: 610-524-7282

www.omegaflex.com

Product

Manifolds for use with TracPipe and CounterStrike

Project Information

Job Name:	Date Submitted:
Location:	Submitted By:
Engineer:	Approved By:
Contractor:	Manufacturer's Rep:

Installation

Must be installed in accordance with the TracPipe Design Guide and Installation Instructions and all applicable codes

Application Information

Manifolds used to facilitate parallel piping installations. May be used in concealed locations on low pressure systems without Line Pressure regulators.

Technical Data

Materials

Cast Iron

Pressure Ratings (used with tubing)

Specification Operating Pressure	25 PSIG
CSA International Evaluation Report - Max Operating Pressure, 3/8" through 1-1/4"	125 PSIG

Temperature Ratings (used with tubing)

Operating Temperature Range	-20 to 200 Deg F
-----------------------------	------------------



Codes

ICC Codes (IFGC, IRC, IMC, IPC), NFPA 54, UPC, CAN/CSA B149.1, NFPA 58

Standards

ANSI LC1 / CSA 6.26, ANSI Z223.1

Listings

CSA, ICC PMG 1046 / 1058, IAPMO (UPC) File No. 3682 / ES ER-0227

Dimensional Information

✓						
	P/N	OD (Nom. in.)	Manifold length (Nom. in.)	Run Sizes	Port Size	Weight (lbs)
<input type="checkbox"/>	FGP-MI-PC	1-1/2"	9-5/8"	1/2", 3/4"	1/2"	1.9
<input type="checkbox"/>	FGP-MI-PC-1X	2"	11-1/2"	1", 1-1/4"	3/4"	5.5
<input type="checkbox"/>	FGP-MI-PC-2X	3-1/8"	14-5/8"	1-1/2", 2"	1"	13

Product
Manifold Bracket
Project Information

Job Name:	Date Submitted:
Location:	Submitted By:
Engineer:	Approved By:
Contractor:	Manufacturer's Rep:

Installation

Must be installed in accordance with the TracPipe Design Guide and Installation Instructions and all applicable codes

Application Information

For use with FGP-MI-PC manifold only

Technical Data
Materials

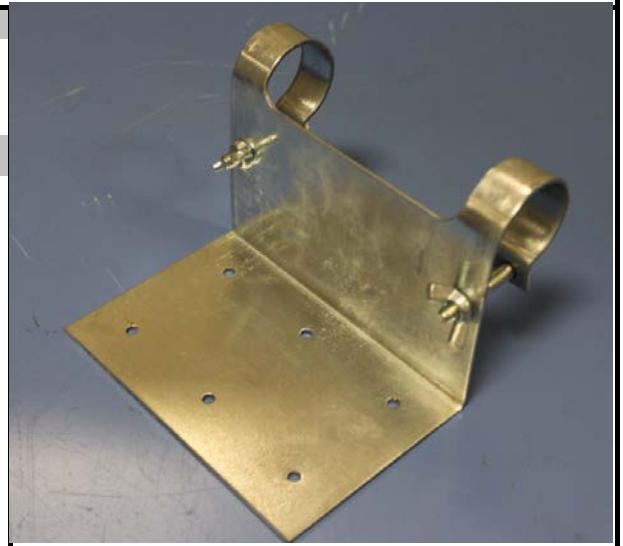
Galvanized Steel

Pressure Ratings (used with tubing)

N/A

Temperature Ratings (used with tubing)

Operating Temperature Range -20 to 200 Deg F


Codes
Standards
Listings
Dimensional Information

✓			
	<i>P/N</i>	<i>L x H x D</i>	<i>Weight (lbs)</i>
<input type="checkbox"/>	FGP-MB2	5-1/4" x 5-1/4" x 4"	1.3

Product
Stackable Manifold
Project Information

Job Name:	Date Submitted:
Location:	Submitted By:
Engineer:	Approved By:
Contractor:	Manufacturer's Rep:

Installation

Must be installed in accordance with the TracPipe Design Guide and Installation Instructions and all applicable codes

Application Information

Two port manifolds with pressure test port designed for smaller systems and to facilitate additional outlets to existing manifold installations. Equipped with a 1/4" Pressure test port.

Technical Data
Materials

Cast Iron

Pressure Ratings (used with tubing)

Specification Operating Pressure	25 PSIG
CSA International Evaluation Report - Max Operating Pressure, 3/8" through 1-1/4"	125 PSIG

Temperature Ratings (used with tubing)

Operating Temperature Range	-20 to 200 Deg F
-----------------------------	------------------


Codes

ICC Codes (IFGC, IRC, IMC, IPC), NFPA 54, UPC, CAN/CSA B149.1, NFPA 58

Standards

ANSI LC1 / CSA 6.26, ANSI Z223.1

Listings

CSA, ICC PMG 1046 / 1058, IAPMO (UPC) File No. 3682 / ES ER-0227

Dimensional Information

✓	Manifold				Run		Weight (lbs)
	Size	P/N	OD (Nom In.)	Length (Nom In.)	Port Size	FNPT - MNPT	
<input type="checkbox"/>	1/2"	FGP-MI-ST-500	1-3/8"	6"	1/2"	1/2" - 1/2"	1.4
<input type="checkbox"/>	3/4"	FGP-MI-ST-750	1-3/8"	6"	1/2"	3/4" - 3/4"	1.4

Omega Flex, Inc. * 451 Creamery Way* Exton, PA 19341

Tel: 610-524-7272 * Toll Free: 800-671-8622 * Fax: 610-524-7282

www.omegaflex.com

Product
Stackable Manifold Bracket
Project Information

Job Name:	Date Submitted:
Location:	Submitted By:
Engineer:	Approved By:
Contractor:	Manufacturer's Rep:

Installation

Must be installed in accordance with the TracPipe Design Guide and Installation Instructions and all applicable codes

Application Information

Mounting bracket for use with Stackable Manifolds

Technical Data
Materials

Galvanized Steel

Pressure Ratings (used with tubing)

N/A

Temperature Ratings (used with tubing)

Operating Temperature Range -20 to 200 Deg F


Codes
Standards
Listings
Dimensional Information

✓

	P/N	L x H x W	Weight (lbs)
<input type="checkbox"/>	FGP-MB-ST	4" x 4-1/2" x 1-1/2"	0.4

Omega Flex, Inc. * 451 Creamery Way* Exton, PA 19341

Tel: 610-524-7272 * Toll Free: 800-671-8622 * Fax: 610-524-7282

www.omegaflex.com

Product

Load Center w/ Manifold Bracket for use with TracPipe and CounterStrike

Project Information

Job Name:	Date Submitted:
Location:	Submitted By:
Engineer:	Approved By:
Contractor:	Manufacturer's Rep:

Installation

Must be installed in accordance with the TracPipe Design Guide and Installation Instructions and all applicable codes

Application Information

For use with FGP-MI-PC Manifold and FGP-REG-3 Regulator only. Load center will mount between standard 16" O.C. Studs. Does not include piping or Regulator.

Technical Data

Materials

Powder Coated Steel

Pressure Ratings (used with tubing)

N/A

Temperature Ratings (used with tubing)

Operating Temperature Range -20 to 200 Deg F



Codes

Standards

Listings

Dimensional Information

✓

	Size	P/N	L x W x D	Weight (lbs)
<input type="checkbox"/>		FGP-LC	25-1/4" x 15-3/4" x 4-1/4"	11.3

Product

Bonding Clamps

Project Information

Job Name:	Date Submitted:
Location:	Submitted By:
Engineer:	Approved By:
Contractor:	Manufacturer's Rep:

Installation

Must be installed in accordance with the TracPipe Design Guide and Installation Instructions and all applicable codes

Application Information

UL 467 Tested Bonding Clamp for use on Pipe and Brass Fitting Hex Flats.

Technical Data

Materials

Body	Brass
Screw	Stainless Steel

Pressure Ratings (used with tubing)

N/A

Temperature Ratings (used with tubing)

Operating Temperature Range -20 to 200 Deg F



Codes

NFPA 780

Standards

UL 467/CSA C22.2

Listings

UL

Dimensional Information

		TracPipe or CounterStrike Size	Weight (lbs)
✓	P/N		
<input type="checkbox"/>	FGP-GC-1	3/8", 1/2", 3/4"	0.2
<input type="checkbox"/>	FGP-GC-2	1", 1-1/4"	0.4
<input type="checkbox"/>	FGP-GC-3	1-1/2", 2"	1.0

Omega Flex, Inc. * 451 Creamery Way* Exton, PA 19341

Tel: 610-524-7272 * Toll Free: 800-671-8622 * Fax: 610-524-7282

www.omegaflex.com

FGP-SUB-029

Rev. 03-11

TracPipe, CounterStrike, PS-II, AutoFlare, and AutoTrip are registered trademarks of Omega Flex, Inc.

page 1/1

Product

PS-II Adapter Assembly (Male NPT)

Project Information

Job Name:	Date Submitted:
Location:	Submitted By:
Engineer:	Approved By:
Contractor:	Manufacturer's Rep:

Installation

Must be installed in accordance with the TracPipe Design Guide and Installation Instructions and all applicable codes

Application Information

Connection of PS-II to NPT fitting.

Technical Data

Materials

Nut, Adapter, Flange and Split Rings	Yellow Brass
Insert and 1" Split Ring	Stainless Steel

Pressure Ratings (used with tubing)

Specification Operating Pressure	25 PSIG
Max Test Pressure	40 PSIG

Temperature Ratings (used with tubing)

Operating Temperature Range	-20 to 200 Deg F
-----------------------------	------------------



Codes

ICC Codes (IFGC, IRC, IMC, IPC), NFPA 54 , UPC, CAN/CSA B149.1, NFPA 58

Standards

ANSI LC1 / CSA 6.26, ANSI Z223.1

Listings

CSA, ICC PMG 1046 / 1052, IAPMO (UPC) File No. 4665

Dimensional Information

✓			Diameter across flats (Nom. in.)	Fitting length (Nom. in.)	TracPipe or CounterStrike Size	Weight (lbs)
Size	P/N					
<input type="checkbox"/> 3/8"	FGP-UGF-375		1"	3-3/4"	3/8"	0.45
<input type="checkbox"/> 1/2"	FGP-UGF-500		1-1/8"	3-7/8"	1/2"	0.50
<input type="checkbox"/> 3/4"	FGP-UGF-750		1-3/8"	4-1/8"	3/4"	0.65
<input type="checkbox"/> 1"	FGP-UGF-1000		1-5/8"	4-3/4"	1"	0.90
<input type="checkbox"/> 1-1/4"	FGP-UGF-1250		2-5/8"	5-1/4"	1-1/4"	1.60
<input type="checkbox"/> 1-1/2"	FGP-UGF-1500		3"	5-7/8"	1-1/2"	2.65
<input type="checkbox"/> 2"	FGP-UGF-2000		3-1/16"	6-1/2"	2"	4.30

Omega Flex, Inc. * 451 Creamery Way* Exton, PA 19341

Tel: 610-524-7272 * Toll Free: 800-671-8622 * Fax: 610-524-7282

www.omegaflex.com

Product
PS-II Coupling Assembly
Project Information

Job Name:	Date Submitted:
Location:	Submitted By:
Engineer:	Approved By:
Contractor:	Manufacturer's Rep:

Installation

Must be installed in accordance with the TracPipe Design Guide and Installation Instructions and all applicable codes

Application Information

Connection of identical sizes of PS-II.

Technical Data
Materials

Nut, Adapter, Flange and Split Rings	Yellow Brass
Insert and 1" Split Ring	Stainless Steel

Pressure Ratings (used with tubing)

Specification Operating Pressure	25 PSIG
Max Test Pressure	40 PSIG

Temperature Ratings (used with tubing)

Operating Temperature Range	-20 to 200 Deg F
-----------------------------	------------------


Codes

ICC Codes (IFGC, IRC, IMC, IPC), NFPA 54, UPC, CAN/CSA B149.1, NFPA 58

Standards

ANSI LC1 / CSA 6.26, ANSI Z223.1

Listings

CSA, ICC PMG 1046 / 1052, IAPMO (UPC) File No. 4665

Dimensional Information

✓			Diameter across flats (Nom. in.)	Fitting length (Nom. in.)	TracPipe or CounterStrike Size	Weight (lbs)
Size	P/N					
<input type="checkbox"/> 3/8"	FGP-UGC-375		1"	6"	3/8"	0.65
<input type="checkbox"/> 1/2"	FGP-UGC-500		1-1/8"	6-1/4"	1/2"	0.70
<input type="checkbox"/> 3/4"	FGP-UGC-750		1-3/8"	7-1/8"	3/4"	1.05
<input type="checkbox"/> 1"	FGP-UGC-1000		1-5/8"	7-5/8"	1"	1.40
<input type="checkbox"/> 1-1/4"	FGP-UGC-1250		2-5/8"	8-3/8"	1-1/4"	2.50
<input type="checkbox"/> 1-1/2"	FGP-UGC-1500		3"	10-1/8"	1-1/2"	4.25
<input type="checkbox"/> 2"	FGP-UGC-2000		3-1/16"	10-5/8"	2"	6.90

Omega Flex, Inc. * 451 Creamery Way* Exton, PA 19341

Tel: 610-524-7272 * Toll Free: 800-671-8622 * Fax: 610-524-7282

www.omegaflex.com

Product

Striker Plates

Project Information

Job Name:	Date Submitted:
Location:	Submitted By:
Engineer:	Approved By:
Contractor:	Manufacturer's Rep:

Installation

Must be installed in accordance with the TracPipe Design Guide and Installation Instructions and all applicable codes

Application Information

Protection from Potential Puncture

Technical Data

Materials

Hardened Steel RB >75

Pressure Ratings (used with tubing)

N/A

Temperature Ratings (used with tubing)

Operating Temperature Range N/A



Codes

ICC Codes (IFGC, IRC, IMC, IPC), NFPA 54 , UPC, CAN/CSA B149.1, NFPA 58, UPC

Standards

ANSI LC1 / CSA 6.26, ANSI Z223.1

Listings

CSA, ICC PMG 1046 / 1052/ 1058 IAPMO (UPC) File No.3682 / 4665 / ES ER-0227

Dimensional Information

✓	P/N	L x W	Weight (lbs)
<input type="checkbox"/>	FGP-SP-025	1-1/2" x 3"	0.1
<input type="checkbox"/>	FGP-SP-050	6-1/2" x 3"	0.3
<input type="checkbox"/>	FGP-SP-075	8" x 3"	0.4
<input type="checkbox"/>	FGP-SP-100	11-1/2" x 3"	0.6
<input type="checkbox"/>	FGP-SP-617	17" x 6-1/2"	1.8

Omega Flex, Inc. * 451 Creamery Way* Exton, PA 19341

Tel: 610-524-7272 * Toll Free: 800-671-8622 * Fax: 610-524-7282

www.omegaflex.com

Product

Ball Valve - Full Flow

Project Information

Job Name:	Date Submitted:
Location:	Submitted By:
Engineer:	Approved By:
Contractor:	Manufacturer's Rep:

Installation

Must be installed in accordance with the TracPipe Design Guide and Installation Instructions and all applicable codes

Application Information

Ball valve for installation upstream of the Line Pressure Regulator in elevated pressure systems. May be used for appliance shut-off valve

Technical Data

Materials

Yellow Brass

Pressure Ratings (used with tubing)

Specification Operating Pressure	25 PSIG
Max Test Pressure	100 PSIG

Temperature Ratings (used with tubing)

Operating Temperature Range	-20 to 200 Deg F
-----------------------------	------------------



Codes

ICC Codes (IFGC, IRC, IMC, IPC), NFPA 54 /, UPC, CAN/CSA B149.1, NFPA 58, UPC

Standards

ANSI LC1 / CSA 6.26, ANSI Z22.15, ANSI Z223.1, ASME B16.33 or ASME B16.44

Listings

CSA, ICC PMG 1046 / 1052, 1058 IAPMO (UPC) File No.3682 / 4665 / ES ER-0227

Dimensional Information

			Valve length (Nom. in.)	Weight (lbs)
✓	Size	P/N		
<input type="checkbox"/>	1/2"	FGP-WBV-500	2-1/4"	0.5
<input type="checkbox"/>	3/4"	FGP-WBV-750	2-3/4"	0.8

OmegaFlex, Inc. * 451 Creamery Way* Exton, PA 19341

Tel: 610-524-7272 * Toll Free: 800-671-8622 * Fax: 610-524-7282

www.omegaflex.com

FGP-SUB-033

Rev. 03-11

TracPipe, Counterstrike, PS-II, AutoFlare, and AutoTrip are registered trademarks of OmegaFlex, Inc.

page 1/1

Product

Quick Disconnect with Appliance Shut-Off Valve

Project Information

Job Name:	Date Submitted:
Location:	Submitted By:
Engineer:	Approved By:
Contractor:	Manufacturer's Rep:

Installation

Must be installed in accordance with the TracPipe Design Guide and Installation Instructions and all applicable codes

Application Information

For use at but not limited to outdoor BBQ and Patio Heater Locations. Indoor and outdoor use

Technical Data

Materials

Yellow Brass

Pressure Ratings (used with tubing)

Specification Operating Pressure	1/2 psig
Max Test Pressure	40 PSIG

Temperature Ratings (used with tubing)

Operating Temperature Range	-20 to 200 Deg F
-----------------------------	------------------



Codes

ICC Codes (IFGC, IRC, IMC, IPC), NFPA 54, UPC, CAN/CSA B149.1, NFPA 58, UPC

Standards

ANSI Z21.41/CSA-6.9 or ANSI Z21.90/CSA-6.24, ANSI Z223.1

Listings

CSA, ICC PMG 1046 / 1052 / 1058 IAPMO (UPC) File No. 3682 / 4665 / ES ER-0227

Dimensional Information

				Valve length (Nom. in.)	Weight (lbs)
✓					
Size	P/N				
<input type="checkbox"/> 1/2"	FGP-QDS			4-1/4"	0.9

Omega Flex, Inc. * 451 Creamery Way* Exton, PA 19341

Tel: 610-524-7272 * Toll Free: 800-671-8622 * Fax: 610-524-7282

www.omegaflex.com

Product
90 deg. Appliance Stub Out for Use with TracPipe and CounterStrike
Project Information

Job Name:	Date Submitted:
Location:	Submitted By:
Engineer:	Approved By:
Contractor:	Manufacturer's Rep:

Installation

Must be installed in accordance with the TracPipe Design Guide and Installation Instructions and all applicable codes

Application Information

Schedule 40 B.I.P. 90 deg. stub out for use at movable appliance locations, with mounting plate

Technical Data
Materials

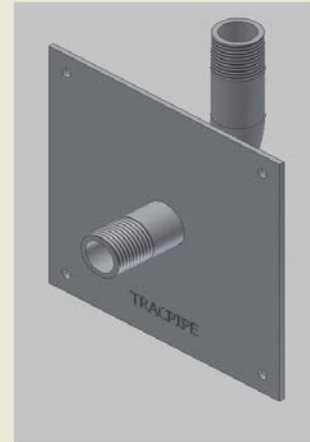
Schedule 40 B.I.P.
Mounting Plate 12 Ga. Carbon Steel

Pressure Ratings (used with tubing)

Specification Operating Pressure	25 PSIG
CSA International Evaluation Report - Max Operating Pressure, 3/8" through 1-1/4"	125 PSIG

Temperature Ratings (used with tubing)

Operating Temperature Range	-20 to 200 Deg F
-----------------------------	------------------


Codes
Standards

NPT Thread per ANSI B1.20.1

Listings
Dimensional Information

			Mounting Flange Dim (Nom)	Fitting length (Nom. in.)	TracPipe or CounterStrike Size	Weight (lbs)
✓						
<input type="checkbox"/>	Size 1/2"	P/N FGP-ASP90S-500	5" x 5"	1-1/2"	1/2"	0.95
<input type="checkbox"/>	Size 3/4"	P/N FGP-ASP90S-750	5" x 5"	1-1/2"	3/4"	1.25

Omega Flex, Inc. * 451 Creamery Way* Exton, PA 19341

Tel: 610-524-7272 * Toll Free: 800-671-8622 * Fax: 610-524-7282

www.omegaflex.com

Product

AutoSnap® Straight Fitting (Male-NPT) Assembly for TracPipe and CounterStrike

Project Information

Job Name:	Date Submitted:
Location:	Submitted By:
Engineer:	Approved By:
Contractor:	Manufacturer's Rep:

Installation

Must be installed in accordance with the TracPipe Design Guide and Installation Instructions and all applicable codes

Application Information

Transition fitting between TracPipe or CounterStrike Tubing and NPT thread.
Fitting thread is Male NPT. For use indoor, outdoor, and concealed location applications.

Technical Data

Materials

Nut, Adapter, and Snap Ring Yellow Brass

Pressure Ratings (used with tubing)

Specification Operating Pressure	25 PSIG
CSA International Evaluation Report - Max Operating Pressure, 3/8" through 1-1/4"	125 PSIG

Temperature Ratings (used with tubing)

Operating Temperature Range	-20 to 200 Deg F
-----------------------------	------------------



Codes

ICC Codes (IFGC, IRC, IMC, IPC), NFPA 54, UPC, CAN/CSA B149.1, NFPA 58

Standards

ANSI LC1 / CSA 6.26. ANSI Z223.1

Listings

CSA, ICC PMG 1046 / 1058,

Dimensional Information

✓			Diameter across flats (Nom. in.)	Fitting length (Nom. in.)	TracPipe or CounterStrike Size	Male NPT Pipe size	Weight (lbs)
Size	P/N						
<input type="checkbox"/> 3/8"	FGP-SFST-375N		15/16"	2-1/8"	3/8"	3/8"	0.2
<input type="checkbox"/> 3/8"x1/2"	FGP-SFST-375		15/16"	2-1/8"	3/8"	1/2"	0.2
<input type="checkbox"/> 1/2"	FGP-SFST-500		1-1/8"	2-1/8"	1/2"	1/2"	0.3
<input type="checkbox"/> 1/2"x3/4"	FGP-SRST500-750		1-1/8"	2"	1/2"	3/4"	0.4
<input type="checkbox"/> 3/4"	FGP-SFST-750		1-3/8"	2-1/4"	3/4"	3/4"	0.4
<input type="checkbox"/> 3/4"x1/2"	FGP-SRST750-500		1-3/8"	2"	3/4"	1/2"	0.5
<input type="checkbox"/> 1"	FGP-SFST-1000		1-3/4"	2-1/2"	1"	1"	0.7
<input type="checkbox"/> 1"x3/4"	FGP-SRST1000-750		1-3/4"	2-1/8"	1"	3/4"	0.8
<input type="checkbox"/> 1-1/4"	FGP-SFST-1250		2"	2-3/4"	1-1/4"	1-1/4"	0.9
<input type="checkbox"/> 1-1/2"	FGP-SFST-1500		2-3/8"	3-1/4"	1-1/2"	1-1/2"	1.3
<input type="checkbox"/> 2"	FGP-SFST-2000		2-7/8"	3-1/2"	2"	2"	2.15

Omega Flex, Inc. * 451 Creamery Way* Exton, PA 19341

Tel: 610-524-7272 * Toll Free: 800-671-8622 * Fax: 610-524-7282

www.omegaflex.com

Product
AutoSnap® Straight Fitting (Female-NPT) Assembly for TracPipe® and TracPipe® CounterStrike®
Project Information

Job Name:	Date Submitted:
Location:	Submitted By:
Engineer:	Approved By:
Contractor:	Manufacturer's Rep:

Installation

Must be installed in accordance with the TracPipe Design Guide and Installation Instructions and all applicable codes

Application Information

Transition fitting between TracPipe or CounterStrike Tubing and NPT thread.
Fitting thread is Female NPT. For use indoors, outdoors, and concealed location applications.

Technical Data
Materials

Nut, Adapter, Flange and Snap Ring Yellow Brass

Pressure Ratings (used with tubing)

Specification Operating Pressure 25 PSIG
CSA International Evaluation Report - Max Operating Pressure
3/8" through 1-1/4" 125 PSIG

Temperature Ratings (used with tubing)

Operating Temperature Range -20 to 200 Deg F


Codes

ICC Codes (IFGC, IRC, IMC), NFPA 54 / ANSI Z223.1, UPC, CAN/CSA B149.1, NFPA 58, UPC

Standards

ANSI LC1 / CSA 6.26, ANSI Z223.1

Listings

CSA, ICC PMG 1046 / 1052, IAPMO (UPC) File No. 4665

Dimensional Information

✓			Diameter across flats (Nom. in.)	Fitting length (Nom. in.)	TracPipe or CounterStrike Size	Weight (lbs/ft)
Size	P/N					
<input type="checkbox"/> 3/8" x 1/2"	FGP-SFSTF-375		7/8"		3/8"	0.25
<input type="checkbox"/> 1/2"	FGP-SFSTF-500		1"		1/2"	0.29
<input type="checkbox"/> 3/4"	FGP-SFSTF-750		1-1/4"		3/4"	0.43
<input type="checkbox"/> 1"	FGP-FSTF-1000		1-3/4"		1"	0.78

OmegaFlex, Inc. * 451 Creamery Way* Exton, PA 19341

Tel: 610-524-7272 * Toll Free: 800-671-8622 * Fax: 610-524-7282

www.omegaflex.com

Product

AutoSnap® Coupling Assembly for TracPipe and CounterStrike

Project Information

Job Name:	Date Submitted:
Location:	Submitted By:
Engineer:	Approved By:
Contractor:	Manufacturer's Rep:

Installation

Must be installed in accordance with the TracPipe Design Guide and Installation Instructions and all applicable codes

Application Information

Coupling fitting for use between like sizes of TracPipe or CounterStrike Tubing.
For indoor, outdoor, and concealed location applications.

Technical Data

Materials

Nut, Adapter, and Snap Ring Yellow Brass

Pressure Ratings (used with tubing)

Specification Operating Pressure	25 PSIG
CSA International Evaluation Report - Max Operating Pressure, 3/8" through 1-1/4"	125 PSIG

Temperature Ratings (used with tubing)

Operating Temperature Range	-20 to 200 Deg F
-----------------------------	------------------



Codes

ICC Codes (IFGC, IRC, IMC, IPC), NFPA 54, UPC, CAN/CSA B149.1, NFPA 58

Standards

ANSI LC1 / CSA 6.26, ANSI Z223.1

Listings

CSA

Dimensional Information

✓			Diameter across flats (Nom. in.)	Fitting length (Nom. in.)	TracPipe or CounterStrike Size	Weight (lbs)
Size	P/N					
<input type="checkbox"/> 3/8"	FGP-SCPLG-375		15/16"	2-3/8"	3/8" X 3/8"	0.3
<input type="checkbox"/> 1/2"	FGP-SCPLG-500		1-1/8"	2-3/4"	1/2" X 1/2"	0.5
<input type="checkbox"/> 3/4"	FGP-SCPLG-750		1-3/8"	2-7/8"	3/4" X 3/4"	0.7
<input type="checkbox"/> 1"	FGP-SCPLG-1000		1-3/4"	3-1/8"	1" X 1"	0.9
<input type="checkbox"/> 1-1/4"	FGP-SCPLG-1250		2"	3-1/2"	1-1/4" X 1-1/4"	2.0
<input type="checkbox"/> 1-1/2"	FGP-SCPLG-1500		2-3/8"	4"	1-1/2" X 1-1/2"	3.3
<input type="checkbox"/> 2"	FGP-SCPLG-2000		2-7/8"	4-5/8"	2" X 2"	5.5

Omega Flex, Inc. * 451 Creamery Way* Exton, PA 19341

Tel: 610-524-7272 * Toll Free: 800-671-8622 * Fax: 610-524-7282

www.omegaflex.com

Product

AutoSnap® Steel Flange Mount for TracPipe and CounterStrike

Project Information

Job Name:	Date Submitted:
Location:	Submitted By:
Engineer:	Approved By:
Contractor:	Manufacturer's Rep:

Installation

Must be installed in accordance with the TracPipe Design Guide and Installation Instructions and all applicable codes

Mounting

Termination fitting between TracPipe or CounterStrike Tubing and NPT thread. Fitting thread is Male NPT. For use indoor, outdoor, and concealed location applications.

Technical Data

Materials

Nut, Adapter, and Snap Ring	Yellow Brass
Mounting Flange	Steel

Pressure Ratings (used with tubing)

Specification Operating Pressure	25 PSIG
CSA International Evaluation Report - Max Operating Pressure, 3/8" through 1-1/4"	125 PSIG

Temperature Ratings (used with tubing)

Operating Temperature Range	-20 to 200 Deg F
-----------------------------	------------------



Codes

ICC Codes (IFGC, IRC, IMC, IPC), NFPA 54, UPC, CAN/CSA B149.1, NFPA 58

Standards

ANSI LC1 / CSA 6.26, ANSI Z223.1

Listings

CSA

Dimensional Information

✓			Diameter across flats (Nom. in.)	Fitting length (Nom. in.)	TracPipe or CounterStrike Size	Weight (lbs)
Size	P/N					
<input type="checkbox"/> 3/8"	FGP-SRFG-375		15/16"	2-3/8"	3/8" X 3/8"	0.3
<input type="checkbox"/> 1/2"	FGP-SRFG-500		1-1/8"	2-3/4"	1/2" X 1/2"	0.5
<input type="checkbox"/> 3/4"	FGP-SRFG-750		1-3/8"	2-7/8"	3/4" X 3/4"	0.7
<input type="checkbox"/> 1"	FGP-SRFG-1000		1-3/4"	3-1/8"	1" X 1"	0.9
<input type="checkbox"/> 1-1/4"	FGP-SRFG-1250		2"	3-1/2"	1-1/4" X 1-1/4"	2.0

Omega Flex, Inc. * 451 Creamery Way* Exton, PA 19341

Tel: 610-524-7272 * Toll Free: 800-671-8622 * Fax: 610-524-7282

www.omegaflex.com

Product

Metal Wall Box with 90° AutoSnap® Valve Assembly for use with TracPipe and CounterStrike

Project Information

Job Name:	Date Submitted:
Location:	Submitted By:
Engineer:	Approved By:
Contractor:	Manufacturer's Rep:

Installation

Must be installed in accordance with the TracPipe Design Guide and Installation Instructions and all applicable codes

Application Information

Metal wall box with valve for use with zero clearance appliance installations. Reverse Mounting tabs to accommodate double sheetrock walls. For Indoor Use Only. Wall Box is Fire Rated to UL 1479.

Technical Data

Materials

Nut, Adapter and Snap Ring	Yellow Brass
Wall Box	Powder Coated Steel

Pressure Ratings (used with tubing)

Specification Operating Pressure	1/2 PSIG
Max Test Pressure	60 PSIG

Temperature Ratings (used with tubing)

Operating Temperature Range	-20 to 200 Deg F
-----------------------------	------------------



Codes

ICC Codes (IFGC, IRC, IMC, IPC), NFPA 54, UPC, CAN/CSA B149.1, NFPA 58

Standards

ANSI LC1 / CSA 6.26, ANSI Z21.15, ANSI Z223.1, UL 1479

Listings

CSA, ICC PMG 1046 / 1058

Dimensional Information

✓			Diameter across flats (Nom. in.)		Box Dim L x H x		Valve Outlet	TracPipe or CounterStrike	
	Size	P/N	Nut	Valve Body	D	Trim Ring Dim	NPT	Size	Weight (lbs)
<input type="checkbox"/>	1/2"	FGP-SWBTM-500	1-1/8"	1-1/8"	5" x 5" x 3-1/8"	6-3/4" x 6-3/4"	1/2"	1/2"	2.3
<input type="checkbox"/>	3/4"	FGP-SWBTM-750	1-3/8"	1-3/8"	5" x 5" x 3-1/8"	6-3/4" x 6-3/4"	3/4"	3/4"	2.8

Omega Flex, Inc. * 451 Creamery Way* Exton, PA 19341

Tel: 610-524-7272 * Toll Free: 800-671-8622 * Fax: 610-524-7282

www.omegaflex.com

FGP-SUB-041

Rev. 03-15

TracPipe, CounterStrike, PS-II, AutoFlare, and AutoTrip are registered trademarks of Omega Flex, Inc.

page 1/1

Product
AutoSnap Tee Fitting Tubing by Pipe Outlet for TracPipe and CounterStrike
Project Information

Job Name:	Date Submitted:
Location:	Submitted By:
Engineer:	Approved By:
Contractor:	Manufacturer's Rep:

Installation

Must be installed in accordance with the TracPipe Design Guide and Installation Instructions and all applicable codes

Application Information

AutoSnap Tee fittings for TracPipe and CounterStrike. Tubing Runs by Pipe Branch.
Branch Thread is NPT

Technical Data
Materials

Nut, Adapter, and Snap Ring Yellow Brass

Pressure Ratings (used with tubing)

Specification Operating Pressure	25 PSIG
CSA International Evaluation Report - Max Operating Pressure	125 PSIG

Temperature Ratings (used with tubing)

Operating Temperature Range	-20 to 200 Deg F
-----------------------------	------------------


Codes

ICC Codes (IFGC, IRC, IMC, IPC), NFPA 54, UPC, CAN/CSA B149.1, NFPA 58

Standards

ANSI LC1 / CSA 6.26, ANSI Z223.1

Listings

CSA, ICC PMG 1046 / 1058, IAPMO (UPC) File No. 3682 / ES ER-0227

Dimensional Information

				<i>Diameter across flats (Nom. in.)</i>	<i>TracPipe or CounterStrike Size</i>	<i>Weight (lbs)</i>
✓	<i>Size</i>	<i>P/N</i>	<i>NPT</i>			
<input type="checkbox"/>	1/2"	FGP-ST500-750	3/4" M-NPT	1-1/8"	1/2"	0.9
<input type="checkbox"/>	1/2"	FGP-ST500-500	1/2" F-NPT	1-1/8"	1/2"	0.8
<input type="checkbox"/>	3/4"	FGP-ST750-500	1/2" F-NPT	1-3/8"	3/4"	1.1
<input type="checkbox"/>	3/4"	FGP-ST750-750	3/4" F-NPT	1-3/8"	3/4"	1.0
<input type="checkbox"/>	1"	FGP-ST1000-1000	1" F-NPT	1-3/4"	1"	2.0

Omega Flex, Inc. * 451 Creamery Way* Exton, PA 19341

Tel: 610-524-7272 * Toll Free: 800-671-8622 * Fax: 610-524-7282

www.omegaflex.com

Product

AutoSnap Tee Fitting Tubing by Tubing for TracPipe and CounterStrike

Project Information

Job Name:	Date Submitted:
Location:	Submitted By:
Engineer:	Approved By:
Contractor:	Manufacturer's Rep:

Installation

Must be installed in accordance with the TracPipe Design Guide and Installation Instructions and all applicable codes

Application Information

AutoSnap Tee fittings for TracPipe and CounterStrike. Tubing by Tubing Runs.
Branch is Tubing.

Technical Data

Materials

Nut, Adapter, and Snap Ring Yellow Brass

Pressure Ratings (used with tubing)

Specification Operating Pressure	25 PSIG
CSA International Evaluation Report - Max Operating Pressure	125 PSIG

Temperature Ratings (used with tubing)

Operating Temperature Range	-20 to 200 Deg F
-----------------------------	------------------



Codes

ICC Codes (IFGC, IRC, IMC, IPC), NFPA 54, UPC, CAN/CSA B149.1, NFPA 58

Standards

ANSI LC1 / CSA 6.26, ANSI Z223.1

Listings

CSA, ICC PMG 1046 / 1058, IAPMO (UPC) File No. 3682 / ES ER-0227

Dimensional Information

		<i>R X R X B Sizes TracPipe or CounterStrike</i>		<i>Diameter across Hex flats R X R X B (Nom. in.)</i>	<i>Weight (lbs)</i>
		<i>Sizes</i>			
✓	<i>Size</i>	<i>P/N</i>			
<input type="checkbox"/>	1/2"	FGP-STF500-T500	1/2" X 1/2" x 1/2"	1-1/8" x 1-1/8" x 1-1/8"	0.9
<input type="checkbox"/>	3/4"	FGP-STF750-T500	3/4" X 3/4" x 3/4"	1-3/8" x 1-3/8" x 1-3/8"	1.1
<input type="checkbox"/>	1"	FGP-STF1000-T1000	1" X 1" x 1"	1-3/4" x 1-3/4" x 1-3/4"	2.2
<input type="checkbox"/>	1/2"	FGP-SRT-501	1/2" X 3/8" X 3/8"	1-1/8" x 15/16" x 15/16"	0.8
<input type="checkbox"/>	3/4"	FGP-SRT-751	3/4" X 1/2" X 3/8"	1-3/8" x 1-1/8" x 15/16"	1.0
<input type="checkbox"/>	3/4"	FGP-SRT-752	3/4" X 1/2" X 1/2"	1-3/8" x 1-1/8" x 1-1/8"	1.0
<input type="checkbox"/>	1"	FGP-SRT-1001	1" X 3/4" X 1/2"	1-3/4" x 1-3/8" x 1-1/8"	2.0
<input type="checkbox"/>	1"	FGP-SRT-1002	1" X 3/4" X 3/4"	1-3/4" x 1-3/8" x 1-3/8"	2.0
<input type="checkbox"/>	3/4"	FGP-STF750-T500	3/4" X 3/4" X 1/2"	1-3/8" x 1-3/8" x 1-1/8"	1.1
<input type="checkbox"/>	1"	FGP-STF1000-T750	1" X 1" X 3/4"	1-3/4" x 1-3/4" x 1-3/8"	2.1
<input type="checkbox"/>	1"	FGP-STF1000-T500	1" X 1" X 1/2"	1-3/4" x 1-3/4" x 1-1/8"	2.1

Omega Flex, Inc. * 451 Creamery Way* Exton, PA 19341

Tel: 610-524-7272 * Toll Free: 800-671-8622 * Fax: 610-524-7282

www.omegaflex.com

Product
Self Bonding Silicone Tape - Black
Project Information

Job Name:	Date Submitted:
Location:	Submitted By:
Engineer:	Approved By:
Contractor:	Manufacturer's Rep:

Installation

Must be installed in accordance with the TracPipe Design Guide and Installation Instructions and all applicable codes

Application Information

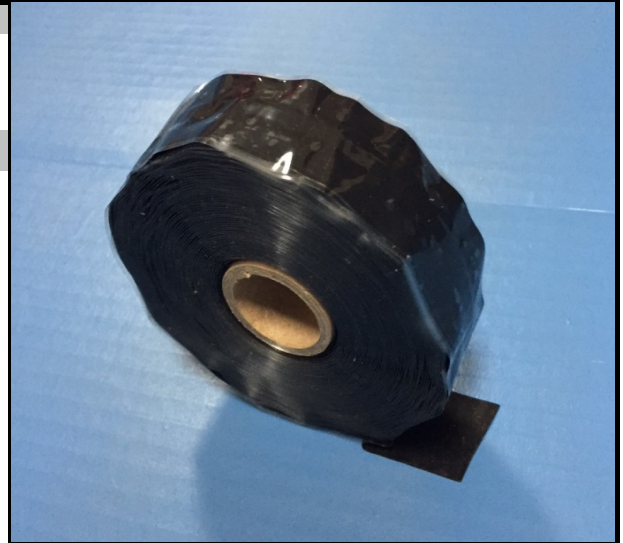
Apply tape in accordance with section 4.3.2 of the TracPipe Design and Installation Guide

Technical Data
Materials

Silicone Rubber - No adhesives permitted

Temperature Ratings

Operating Temperature Range -65 to 260 Deg F


Codes
Standards
Listings
Dimensional Information

✓	Pipe / Fitting Size	P/N	Width	Roll Length	tape thickness (in.)
	All	FGP-915-10H-12BL	1 inch	12 yds	0.020

OmegaFlex, Inc. * 451 Creamery Way* Exton, PA 19341

Tel: 610-524-7272 * Toll Free: 800-671-8622 * Fax: 610-524-7282

www.omegaflex.com

Product
AutoFlare® Steel Flange Mount for TracPipe and CounterStrike
Project Information

Job Name:	Date Submitted:
Location:	Submitted By:
Engineer:	Approved By:
Contractor:	Manufacturer's Rep:

Installation

Must be installed in accordance with the TracPipe Design Guide and Installation Instructions and all applicable codes

Mounting

Termination fitting between TracPipe or CounterStrike Tubing and NPT thread.
Fitting thread is Male NPT. For use indoor, outdoor, and concealed location applications.

Technical Data
Materials

Nut, Adapter, and Split Rings	Yellow Brass
Insert and 1" Split Rings	Stainless Steel
Mounting Flange	Steel, black E-coated

Pressure Ratings (used with tubing)

Specification Operating Pressure	25 PSIG
CSA International Evaluation Report - Max Operating Pressure, 3/8" through 1-1/4"	125 PSIG

Temperature Ratings (used with tubing)

Operating Temperature Range	-20 to 200 Deg F
-----------------------------	------------------

Codes

ICC Codes (IFGC, IRC, IMC, IPC), NFPA 54, UPC, CAN/CSA B149.1, NFPA 58

Standards

ANSI LC1 / CSA 6.26, ANSI Z223.1

Listings

CSA

Dimensional Information

✓			Diameter across flats (Nom. in.)	Fitting length (Nom. in.)	TracPipe or CounterStrike x M-NPT Size	Plate size l x w (in.)	Weight (lbs)
Size	P/N						
<input type="checkbox"/> 3/8"	FGP-RFG-375		15/16	2-3/8	3/8" X 3/8"	3-1/4 x 2-3/4	0.3
<input type="checkbox"/> 1/2"	FGP-RFG-500		1-1/8	2-3/4	1/2" X 1/2"	3-1/4 x 2-3/4	0.5
<input type="checkbox"/> 3/4"	FGP-RFG-750		1-3/8	2-7/8	3/4" X 3/4"	3-1/4 x 2-3/4	0.7
<input type="checkbox"/> 1"	FGP-RFG-1000		1-3/4	3-1/8	1" X 1"	3-1/4 x 2-3/4	0.9
<input type="checkbox"/> 1-1/4"	FGP-RFG-1250		2	3-1/2	1-1/4" X 1-1/4"	3-1/4 x 2-3/4	2.0



Omega Flex, Inc. * 451 Creamery Way* Exton, PA 19341

Tel: 610-524-7272 * Toll Free: 800-671-8622 * Fax: 610-524-7282

www.omegaflex.com

FGP-SUB-045

Rev. 11-19

TracPipe, CounterStrike, PS-II, AutoFlare, AutoSnap and AutoTrip are registered trademarks of Omega Flex, Inc.

page 1/1

Product

90° AutoFlare® Steel Flange Mount for TracPipe and CounterStrike

Project Information

Job Name:	Date Submitted:
Location:	Submitted By:
Engineer:	Approved By:
Contractor:	Manufacturer's Rep:

Installation

Must be installed in accordance with the TracPipe Design Guide and Installation Instructions and all applicable codes

Mounting

Termination fitting between TracPipe or CounterStrike Tubing and NPT thread.
Fitting thread is Male NPT. For use indoor, outdoor, and concealed location applications.

Technical Data

Materials

Nut, Adapter, and Split Rings	Yellow Brass
Insert and 1" Split Rings	Stainless Steel
Mounting Flange	Steel, black E-coated

Pressure Ratings (used with tubing)

Specification Operating Pressure	25 PSIG
CSA International Evaluation Report - Max Operating Pressure, 3/8" through 1-1/4"	125 PSIG

Temperature Ratings (used with tubing)

Operating Temperature Range	-20 to 200 Deg F
-----------------------------	------------------



Codes

ICC Codes (IFGC, IRC, IMC, IPC), NFPA 54, UPC, CAN/CSA B149.1, NFPA 58

Standards

ANSI LC1 / CSA 6.26, ANSI Z223.1

Listings

CSA

Dimensional Information

✓							
Size	P/N	Diameter across flats (Nom. in.)	Fitting length (Nom. in.)	TracPipe or CounterStrike x M-NPT Size	Plate size l x w (in.)	Weight (lbs)	
1/2"	FGP-ELS-500	1-1/8	2-11/16	1/2" x 1/2"	3-1/4 x 2-3/4	0.6	

Omega Flex, Inc. * 451 Creamery Way* Exton, PA 19341

Tel: 610-524-7272 * Toll Free: 800-671-8622 * Fax: 610-524-7282

www.omegaflex.com

Product

90° AutoFlare® Steel Flange Mount (Valve - Female NPT) Assembly for TracPipe and CounterStrike

Project Information

Job Name:	Date Submitted:
Location:	Submitted By:
Engineer:	Approved By:
Contractor:	Manufacturer's Rep:

Installation

Must be installed in accordance with the TracPipe Design Guide and Installation Instructions and all applicable codes

Mounting

Termination fitting between TracPipe or CounterStrike Tubing with appliance shut-off valve and NPT thread. Fitting thread is Female NPT. For use indoor, outdoor, and concealed location applications.

Technical Data

Materials

Nut, Adapter, and Split Rings	Yellow Brass
Insert and 1" Split Rings	Stainless Steel
Mounting Flange	Steel, black E-coated
Valve Body	Plated Brass

Pressure Ratings (used with tubing)

Specification Operating Pressure	1/2 PSIG
Max Test Pressure	60 PSIG

Temperature Ratings (used with tubing)

Operating Temperature Range	32 to 125 Deg F
-----------------------------	-----------------

Codes

ICC Codes (IFGC, IRC, IMC, IPC), NFPA 54, UPC, CAN/CSA B149.1, NFPA 58

Standards

ANSI LC1 / CSA 6.26, ANSI Z21.15, ANSI Z223.1

Listings

CSA

Dimensional Information

✓	Size	P/N	Diameter across flats (Nom. in.)	Fitting Height (Nom. in.)	TracPipe or CounterStrike x M-NPT Size	Plate size l x w (in.)	Weight (lbs)
<input type="checkbox"/>	3/8"	FGP-RF90V-375	1	3-1/2	3/8" x 1/2"	3-1/4 x 2-3/4	1.3
<input type="checkbox"/>	1/2"	FGP-RF90V-500	1-1/8	3-3/4	1/2" x 1/2"	3-1/4 x 2-3/4	1.3
<input type="checkbox"/>	3/4"	FGP-RF90V-750	1-3/8	4-9/16	3/4" x 3/4"	3-1/4 x 2-3/4	1.7



Omega Flex, Inc. * 451 Creamery Way* Exton, PA 19341

Tel: 610-524-7272 * Toll Free: 800-671-8622 * Fax: 610-524-7282

www.omegaflex.com

Product

Self Bonding Silicone Tape - Yellow

Project Information

Job Name:	Date Submitted:
Location:	Submitted By:
Engineer:	Approved By:
Contractor:	Manufacturer's Rep:

Installation

Must be installed in accordance with the TracPipe Design Guide and Installation Instructions and all applicable codes

Application Information

Apply tape in accordance with section 4.3B of the Canadian TracPipe Design and Installation Guide

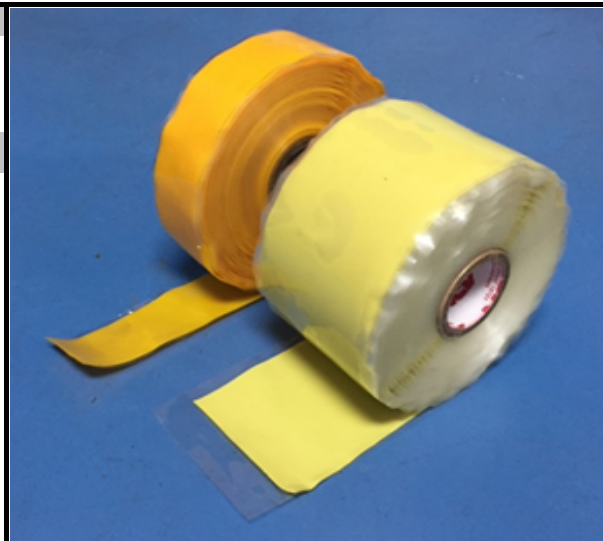
Technical Data

Materials

Silicone Rubber - No adhesives permitted

Temperature Ratings

Operating Temperature Range -65 to 260 Deg F



Codes

Standards

Listings

Dimensional Information

✓	Pipe / Fitting Size	P/N	Width	Roll Length	Min. tape thickness (in.)
<input type="checkbox"/>	All	FGP-915-10H-12	1 inch	12 yds	0.020
<input type="checkbox"/>	All	FGP-915-20H12PO	2 inch	12 yds	0.020

OmegaFlex, Inc. * 451 Creamery Way* Exton, PA 19341

Tel: 610-524-7272 * Toll Free: 800-671-8622 * Fax: 610-524-7282

www.omegaflex.com

FGP-SUB-048

Rev. 12-19

TracPipe, Counterstrike, PS-II, AutoFlare, AutoSnap, and AutoTrip are registered trademarks of OmegaFlex, Inc.

page 1/1