

Submittal Data Sheet

17.0 SEER, Air Conditioner System, 3.0 Ton, Outdoor Unit-GSXC180361B*

Submitted By : Goodman/Amana Unitary Test System

Submitted To : N/A

Tags : AHRI 206730518 Products [GSXC180361B* , CA*FA4226*6A*+TXV, GMVC961005CNB*] , SEER 17.0 , EER 13.0

STANDARD FEATURES:

- High-efficiency two-stage scroll compressor
- High-efficiency two-speed ECM condenser fan motor
- ComfortBridge™ Communications System compatible
- Factory-installed filter drier
- Factory-installed high and low-pressure switches
- High-density foam compressor sound blanket
- Copeland® ComfortAlert™ built in diagnostics
- Fully charged for fifteen feet of tubing length
- Factory-installed sensors monitoring coil and ambient temperature
- Contactor with lug connection
- In communicating mode, only two low voltage wires to the outdoor unit are required
- AHRI Certified - ETL Listed
- Ground lug connection
- Color-coded terminal strip for non-communicating set-up
- Copper tube & enhanced aluminum fin coil
- Customized control algorithms



CABINET FEATURES:

- Heavy-gauge galvanized steel cabinet and louvered coil guards
- Service valves with sweat connections and easy-access gauge ports
- Engineered sound control top design
- Wire fan discharge grille
- Baked-on powder-paint finish with 500-hour salt-spray approval
- Single-panel access to controls with space for field-installed accessories
- Service port and controls are accessible while unit is operating
- Compact footprint
- Rust-resistant screws
- When properly anchored, meets the 2017 Florida Building Code unit integrity requirements for hurricane-type winds (Anchor bracket kits available.)



At Goodman, we believe in American dependability. Units are designed, engineered and assembled in the U.S.A.



Submittal Data Sheet

17.0 SEER, Air Conditioner System, 3.0 Ton, Outdoor Unit-GSXC180361B*

Submitted By : Goodman/Amana Unitary Test System

Submitted To : N/A

Tags : AHRI 206730518 Products [GSXC180361B* , CA*FA4226*6A*+TXV, GMVC961005CNB*] , SEER 17.0 , EER 13.0

SYSTEM PERFORMANCE

Outdoor Unit Model No.:	GSXC180361B*	Description :	17.0 SEER, Air Conditioner System, 3.0 Ton Outdoor System
Indoor Unit Model No.:	CAPFA4226C6A*		
TXV/PISTON :	TX3N4		
Furnace Unit Model No.:	GMVC961005CN		
Rated Cooling Conditions:	Outdoor (°F DB/WB):95/75 Indoor (°F DB/WB):80/67	Rated Heating Conditions:	Outdoor (°F DB/WB):N/A/N/A Indoor (°F DB/WB):N/A/N/A
Rated Cooling Capacity (Btu/hr):	34400	OD Rated Heating Capacity (Btu/hr)	N/A
EER:	13.0	Heating COP:	N/A
SEER:	17.0	AFUE:	96

OUTDOOR UNIT DETAILS : GSXC180361B*

Power Supply (V/Hz/Ph):	208/230/60/1	Compressor Type:	Scroll
Min. Circuit Amps MCA (A):	21.3	Compressor Stages:	Two Stage
Max Overcurrent Protection (MOP) (A):	35	Suction Valve Connection Size (in):	3/4
Compressor Rated Load Amps :	14.8	Liquid Valve Connection Size (in):	3/8
Refrigerant Type:	R-410A	Sound Power(High/Med/Low) (dBA):	71 / - / 70
Holding Refrigerant Charge (oz):	133	Cooling Operation Range (°F DB):	55 - 125
Additional Charge (oz/ft):	0.60	Heating Operation Range (°F DB):	N/A
Pre-charge Piping (Length) (ft):	15	Net Weight (lb):	238
Dimensions (HxWxD) (in):	40 x 35-3/4 x 35-3/4	Gross Weight (lb):	232
*Max. Pipe Length (Vertical) (ft):	25	*Max. Pipe Length (Total) (ft):	80

**Refer to Long Line Set Application TP-107 for lines greater than 80 ft. or vertical elevation changes more than 50 ft. for single stage equipment and 25 ft. for 2-stage equipment.*



At Goodman, we believe in American dependability. Units are designed, engineered and assembled in the U.S.A.



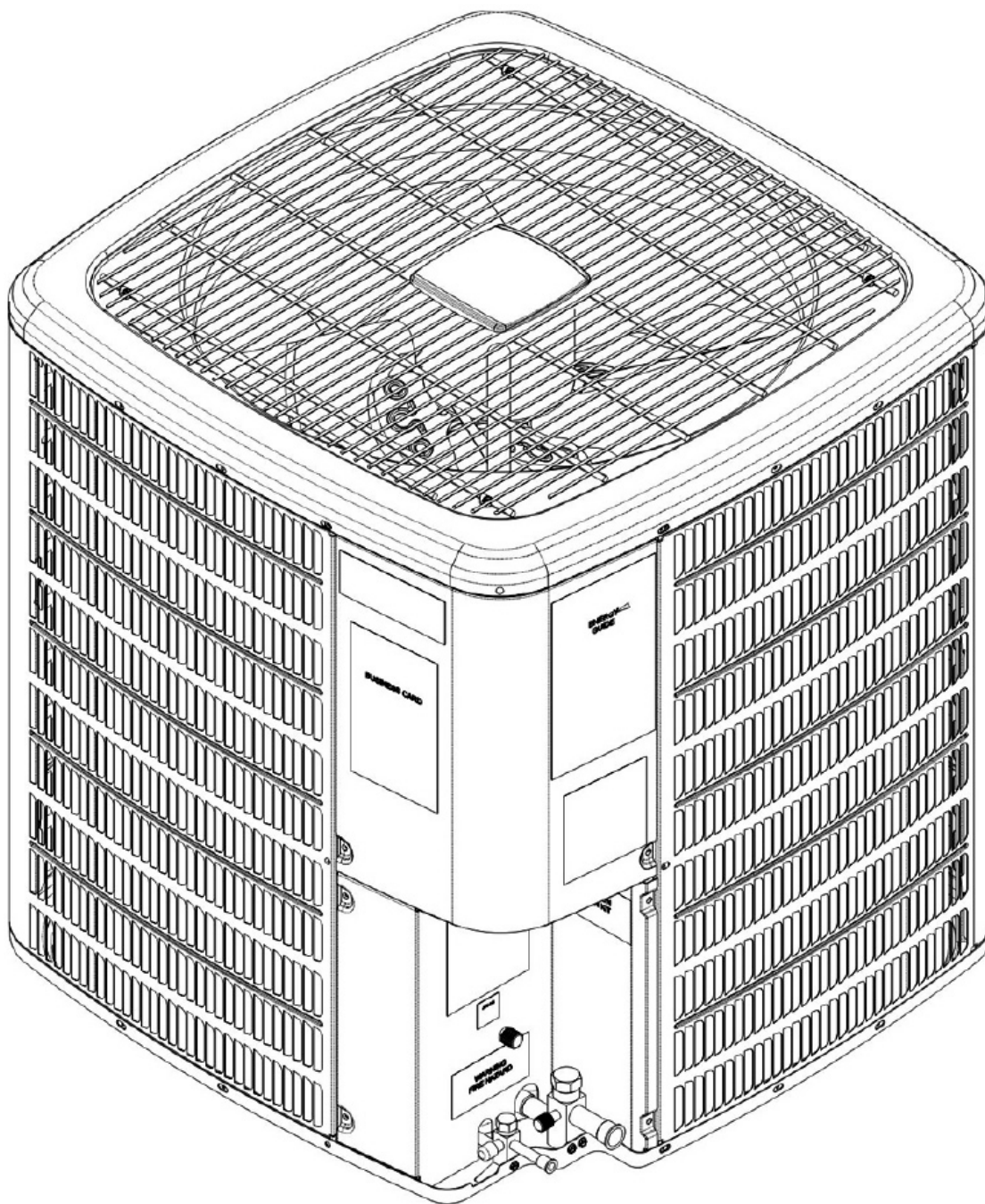
Submittal Data Sheet

17.0 SEER, Air Conditioner System, 3.0 Ton, Outdoor Unit-GSXC180361B*

Submitted By : Goodman/Amana Unitary Test System

Submitted To : N/A

Tags : AHRI 206730518 Products [GSXC180361B* , CA*FA4226*6A*+TXV, GMVC961005CNB*], SEER 17.0 , EER 13.0



At Goodman, we believe in American dependability. Units are designed, engineered and assembled in the U.S.A.



Submittal Data Sheet

17.0 SEER, Air Conditioner System, 3.0 Ton, Outdoor Unit-GSXC180361B*

Submitted By : Goodman/Amana Unitary Test System

Submitted To : N/A

Tags : AHRI 206730518 Products [GSXC180361B* , CA*FA4226*6A*+TXV, GMVC961005CNB*], SEER 17.0 , EER 13.0

STANDARD FEATURES:

- Compact and lightweight all-aluminum evaporator coil with AlumaFin7™ technology
- Optimized for use with R-410A refrigerant
- Check flowrator for cooling applications
- Rust resistant, thermoplastic drain pans featuring a low water-retention design
- Foil-faced insulation covers the internal casing to reduce cabinet condensation
- Single-piece access panel with tight seal helps to keep conditioned air from escaping
- Seal tight customized suction and liquid grommets for easy installation and removal
- 21" depth for easier attic access
- Vertical application
- Galvanized, leather grain-embossed finish
- AHRI certified
- ETL listed

CABINET FEATURES:

- **DATA IS NOT AVAILABLE**



At Goodman, we believe in American dependability. Units are designed, engineered and assembled in the U.S.A.



Submittal Data Sheet

17.0 SEER, Air Conditioner System,3.0 Ton, Outdoor Unit-GSXC180361B*

Submitted By : Goodman/Amana Unitary Test System

Submitted To : N/A

Tags : AHRI 206730518 Products [GSXC180361B* , CA*FA4226*6A*+TXV, GMVC961005CNB*], SEER 17.0 , EER 13.0

INDOOR UNIT DETAILS : CAPFA4226C6A*

Dimensions (HxWxD) (in) :	26 x 21 x 21	Suction Connection Size (in) :	7/8
Net Weight (lb):	54	Liquid Connection Size (in) :	3/8
Gross Weight (lb):	54	Condensate Connection (in) :	3/4
Power Voltage (lb):	-	Current Type :	-
Power Phase:	-	Power Frequency :	-
Min Voltage :	-	Max Voltage :	-
MCA :	-	MOP :	-
Electric Heat Range :	-	Indoor Blower FLA :	-
Fan Motor Output :	-	Outdoor Fan LRA :	-



At Goodman, we believe in American dependability. Units are designed, engineered and assembled in the U.S.A.



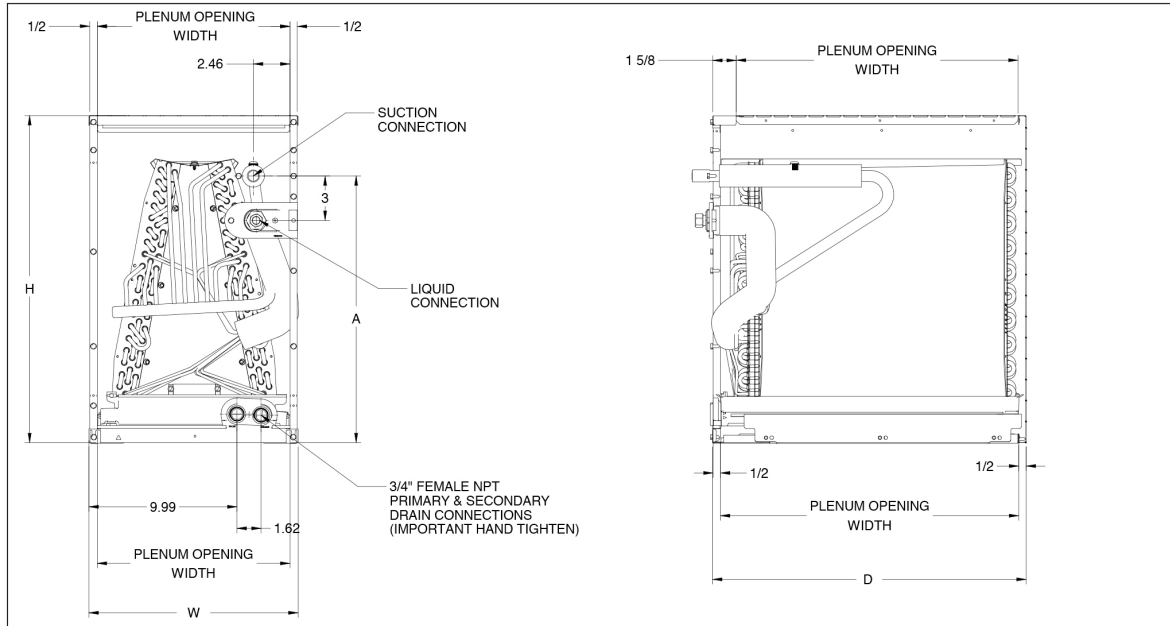
Submittal Data Sheet

17.0 SEER, Air Conditioner System, 3.0 Ton, Outdoor Unit-GSXC180361B*

Submitted By : Goodman/Amana Unitary Test System

Submitted To : N/A

Tags : AHRI 206730518 Products [GSXC180361B* , CA*FA4226*6A*+TXV, GMVC961005CNB*], SEER 17.0 , EER 13.0



At Goodman, we believe in American dependability. Units are designed, engineered and assembled in the U.S.A.



Submittal Data Sheet

17.0 SEER, Air Conditioner System, 3.0 Ton, Outdoor Unit-GSXC180361B*

Submitted By : Goodman/Amana Unitary Test System

Submitted To : N/A

Tags : AHRI 206730518 Products [GSXC180361B* , CA*FA4226*6A*+TXV, GMVC961005CNB*] , SEER 17.0 , EER 13.0

STANDARD FEATURES:

- Heavy-duty aluminized-steel tubular heat exchanger
- Efficient and quiet variable-speed Blower
- Integrated communicating ComfortBridge™ technology
- Commissioning and diagnostics via on board Bluetooth with the CoolCloud™ phone and tablet application
- Stainless-steel sloped secondary heat exchanger
- Silicon Nitride igniter
- Dual 7-segment display
- Color-coded low-voltage terminals
- Two-Stage gas valve
- All models comply with California 40 ng/J
- AHRI Certified, ETL Listed
- Energy Star
- Furnace control board with self-diagnostics and provisions for electronic air cleaner and 120-volt or 24-volt humidifiers

Data Missing

CABINET FEATURES:

- Multi-position installation: upflow, horizontal left or right
- Certified for direct vent (2-pipe) or non-direct vent (1 pipe)
- Easy to install top venting with optional side vent
- Convenient left or right connection for gas and electrical service
- Cabinet air leakage (Qleak) less than or equal to 2%
- Fully insulated heat exchanger and blower section
- Bottom or side return air applications
- Heavy-gage steel cabinet with durable finish



At Goodman, we believe in American dependability. Units are designed, engineered and assembled in the U.S.A.



Submittal Data Sheet

17.0 SEER, Air Conditioner System,3.0 Ton, Outdoor Unit-GSXC180361B*

Submitted By : Goodman/Amana Unitary Test System

Submitted To : N/A

Tags : AHRI 206730518 Products [GSXC180361B* , CA*FA4226*6A*+TXV, GMVC961005CNB*] , SEER 17.0 , EER 13.0

INDOOR FURNACE UNIT DETAILS : GMVC961005CNB*

Power Supply (V/Hz/Ph):	115/60/1	Temperature Rise Range High Fire (° F):	35-65
Min. Circuit Amps MCA (A):	14.4	Temperature Rise Range Low Fire (° F):	35-65
Max Overcurrent Protection (MOP) (A):	20.0	High Fire Input Capacity :	100000
AFUE :	96	High Fire Output Capacity :	96100
Vent Diameter (In):	2;3	Low Fire Input Capacity :	70000
Net Weight (lb):	-	Low fire output Capacity :	67270
Gross Weight (lb):	152	Dimensions (HxWxD) (in):	34-1/2 x 21 x 29
Power Voltage (lb):	115	Current Type :	AC
Power Phase:	1	Power Frequency :	60
Min Voltage :	-	Max Voltage :	-
MCA :	14.4	MOP :	20.0
Electric Heat Range :	-	Indoor Blower FLA :	-
Fan Motor Output :	-	Outdoor Fan LRA :	-



At Goodman, we believe in American dependability. Units are designed, engineered and assembled in the U.S.A.



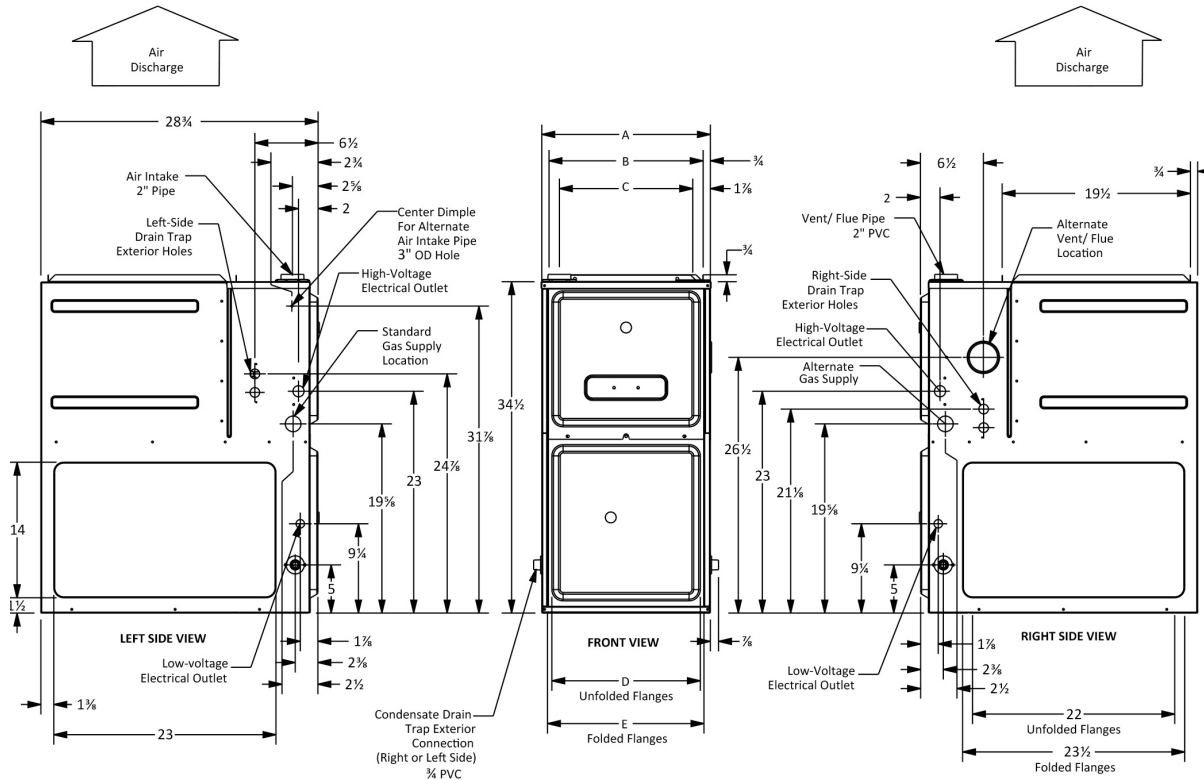
Submittal Data Sheet

17.0 SEER, Air Conditioner System, 3.0 Ton, Outdoor Unit-GSXC180361B*

Submitted By : Goodman/Amana Unitary Test System

Submitted To : N/A

Tags : AHRI 206730518 Products [GSXC180361B* , CA*FA4226*6A*+TXV, GMVC961005CNB*], SEER 17.0 , EER 13.0



At Goodman, we believe in American dependability. Units are designed, engineered and assembled in the U.S.A.

