

Submittal Data Sheet

15.0 SEER, Heat Pump System, 3.0 Ton, Outdoor Unit-GSZ160361B*

Submitted By : Goodman/Amana Unitary Test System

Submitted To : N/A

Tags : AHRI 207349838 Products [GSZ160361B* , CA*F4860*6D*+TXV, GM9C961004CNA*], SEER 15.0 , EER 12.5 , HSPF 8.5

STANDARD FEATURES:

- Energy-efficient compressor
- Single-speed PSC condenser fan motor
- Factory-installed filter drier
- Factory-installed suction line accumulator
- Factory-installed compressor crankcase heater
- Factory-installed high-capacity muffler
- Factory-installed high and low-pressure switches
- SmartShift® technology with short-cycle protection to ensure quiet, reliable defrost
- Contactor with lug connection
- Fully charged for fifteen feet of tubing length
- AHRI Certified-ETL Listed
- Copper tube & enhanced aluminum fin coil.

CABINET FEATURES:

- Heavy-gauge galvanized steel cabinet and louvered coil guards
- Service valves with sweat connections and easy-access gauge ports
- Engineered sound control top design
- Baked-on powder-paint finish with 500-hour salt-spray approval
- Single-panel access to controls with space for field-installed accessories
- Service port and controls are accessible while unit is operating
- Compact footprint
- Rust-resistant screws
- When properly anchored, meets the 2017 Florida Building Code unit integrity requirements for hurricane-type winds (Anchor bracket kits available.)



At Goodman, we believe in American dependability. Units are designed, engineered and assembled in the U.S.A.



Submittal Data Sheet

15.0 SEER, Heat Pump System,3.0 Ton, Outdoor Unit-GSZ160361B*

Submitted By : Goodman/Amana Unitary Test System

Submitted To : N/A

Tags : AHRI 207349838 Products [GSZ160361B* , CA*F4860*6D*+TXV, GM9C961004CNA*] , SEER 15.0 , EER 12.5 , HSPF 8.5

SYSTEM PERFORMANCE

Outdoor Unit Model No.:	GSZ160361B*	Description :	15.0 SEER, Heat Pump System, 3.0 Ton Outdoor System
Indoor Unit Model No.:	CAPF4860C6D*		
TXV/PISTON :	TX3N4		
Furnace Unit Model No.:	GM9C961004CN		
Rated Cooling Conditions:	Outdoor (°F DB/WB):95/75 Indoor (°F DB/WB):80/67	Rated Heating Conditions:	Outdoor (°F DB/WB):47/43 Indoor (°F DB/WB):70/60
Rated Cooling Capacity (Btu/hr):	34000N/A	OD Rated Heating Capacity (Btu/hr)	35000
EER:	12.5	Heating COP:	3.8
SEER:	15.0	* HSPF:	8.5

OUTDOOR UNIT DETAILS : GSZ160361B*

Power Supply (V/Hz/Ph):	208/230/60/1	Compressor Type:	Scroll
Min. Circuit Amps MCA (A):	18.9	Compressor Stages:	Single Stage
Max Overcurrent Protection (MOP) (A):	30	Suction Valve Connection Size (in):	7/8
Compressor Rated Load Amps :	14.1	Liquid Valve Connection Size (in):	3/8
Refrigerant Type:	R-410A	Sound Power(High/Med/Low) (dBA):	73 / - / N/A
Holding Refrigerant Charge (oz):	175	Cooling Operation Range (°F DB):	55 - 125
Additional Charge (oz/ft):	0.60	Heating Operation Range (°F DB):	-20 - 70
Pre-charge Piping (Length) (ft):	15	Net Weight (lb):	220
Dimensions (HxWxD) (in):	42-1/4 x 35-3/4 x 35-3/4	Gross Weight (lb):	246
*Max. Pipe Length (Vertical) (ft):	50	*Max. Pipe Length (Total) (ft):	80

**Refer to Long Line Set Application TP-107 for lines greater than 80 ft. or vertical elevation changes more than 50 ft. for single stage equipment and 25 ft. for 2-stage equipment.*



At Goodman, we believe in American dependability. Units are designed, engineered and assembled in the U.S.A.



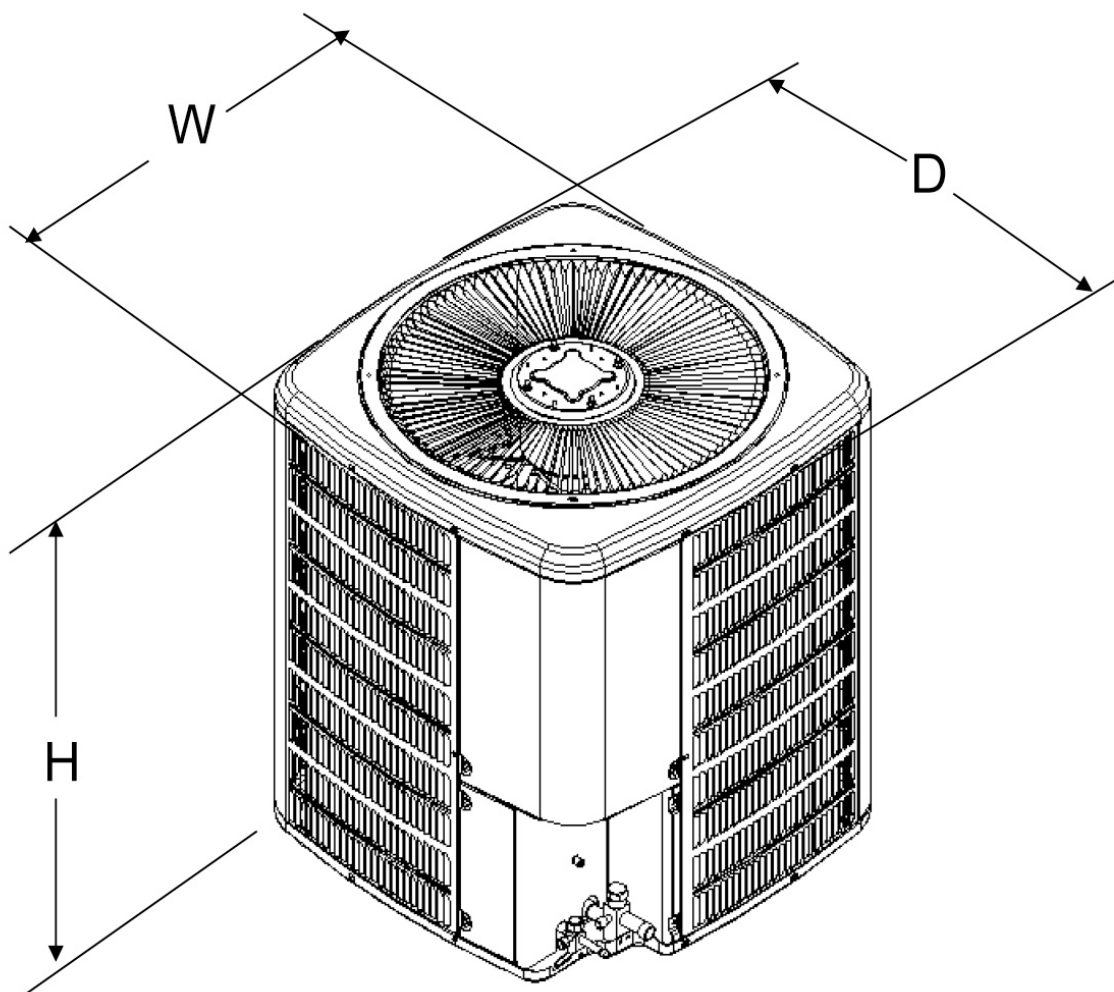
Submittal Data Sheet

15.0 SEER, Heat Pump System, 3.0 Ton, Outdoor Unit-GSZ160361B*

Submitted By : Goodman/Amana Unitary Test System

Submitted To : N/A

Tags : AHRI 207349838 Products [GSZ160361B* , CA*F4860*6D*+TXV, GM9C961004CNA*], SEER 15.0 , EER 12.5 , HSPF 8.5



At Goodman, we believe in American dependability. Units are designed, engineered and assembled in the U.S.A.



Submittal Data Sheet

15.0 SEER, Heat Pump System, 3.0 Ton, Outdoor Unit-GSZ160361B*

Submitted By : Goodman/Amana Unitary Test System

Submitted To : N/A

Tags : AHRI 207349838 Products [GSZ160361B* , CA*F4860*6D*+TXV, GM9C961004CNA*], SEER 15.0 , EER 12.5 , HSPF 8.5

STANDARD FEATURES:

- All-Aluminum evaporator coil
- Optimized for use with R-410A refrigerant
- Check flowrator for cooling and heat pump applications
- Vertical application
- 21" depth for easier attic access
- Galvanized, leather grain-embossed finish
- Rust resistant, thermoplastic drain pans featuring a low water-retention design
- AHRI certified
- ETL Listed

CABINET FEATURES:

- Twenty one inch depth for easier attic access
- Split seam front for easy access
- Foil-faced insulation covers the internal casing to reduce cabinet condensation
- Galvanized, leather grain-embossed finish



At Goodman, we believe in American dependability. Units are designed, engineered and assembled in the U.S.A.



Submittal Data Sheet

15.0 SEER, Heat Pump System,3.0 Ton, Outdoor Unit-GSZ160361B*

Submitted By : Goodman/Amana Unitary Test System

Submitted To : N/A

Tags : AHRI 207349838 Products [GSZ160361B* , CA*F4860*6D*+TXV, GM9C961004CNA*] , SEER 15.0 , EER 12.5 , HSPF 8.5

INDOOR UNIT DETAILS : CAPF4860C6D*

Dimensions (HxWxD) (in) :	30 x 21 x 21	Suction Connection Size (in) :	7/8
Net Weight (lb):	65	Liquid Connection Size (in) :	3/8
Gross Weight (lb):	67	Condensate Connection (in) :	3/4
Power Voltage (lb):	-	Current Type :	-
Power Phase:	-	Power Frequency :	-
Min Voltage :	-	Max Voltage :	-
MCA :	-	MOP :	-
Electric Heat Range :	-	Indoor Blower FLA :	-
Fan Motor Output :	-	Outdoor Fan LRA :	-



At Goodman, we believe in American dependability. Units are designed, engineered and assembled in the U.S.A.



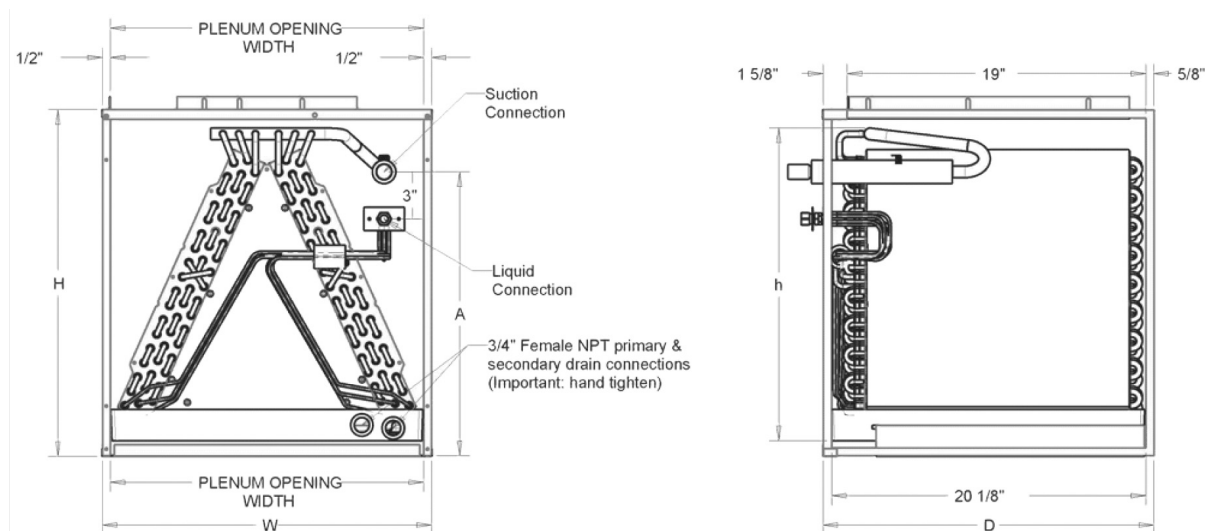
Submittal Data Sheet

15.0 SEER, Heat Pump System, 3.0 Ton, Outdoor Unit-GSZ160361B*

Submitted By : Goodman/Amana Unitary Test System

Submitted To : N/A

Tags : AHRI 207349838 Products [GSZ160361B* , CA*F4860*6D*+TXV, GM9C961004CNA*], SEER 15.0 , EER 12.5 , HSPF 8.5



At Goodman, we believe in American dependability. Units are designed, engineered and assembled in the U.S.A.



Submittal Data Sheet

15.0 SEER, Heat Pump System,3.0 Ton, Outdoor Unit-GSZ160361B*

Submitted By : Goodman/Amana Unitary Test System

Submitted To : N/A

Tags : AHRI 207349838 Products [GSZ160361B* , CA*F4860*6D*+TXV, GM9C961004CNA*] , SEER 15.0 , EER 12.5 , HSPF 8.5

STANDARD FEATURES:

- DATA IS NOT AVAILABLE

CABINET FEATURES:

- DATA IS NOT AVAILABLE

Data Missing



At Goodman, we believe in American dependability. Units are designed, engineered and assembled in the U.S.A.



Submittal Data Sheet

15.0 SEER, Heat Pump System,3.0 Ton, Outdoor Unit-GSZ160361B*

Submitted By : Goodman/Amana Unitary Test System

Submitted To : N/A

Tags : AHRI 207349838 Products [GSZ160361B* , CA*F4860*6D*+TXV, GM9C961004CNA*] , SEER 15.0 , EER 12.5 , HSPF 8.5

INDOOR FURNACE UNIT DETAILS : GM9C961004CNA*

Power Supply (V/Hz/Ph):	115/60/1	Temperature Rise Range High Fire (° F):	35-65
Min. Circuit Amps MCA (A):	14.1	Temperature Rise Range Low Fire (° F):	35-65
Max Overcurrent Protection (MOP) (A):	20	High Fire Input Capacity :	100000
AFUE :	96	High Fire Output Capacity :	96000
Vent Diameter (In):	4	Low Fire Input Capacity :	70000
Net Weight (lb):	140	Low fire output Capacity :	67200
Gross Weight (lb):	142	Dimensions (HxWxD) (in):	33-3/8 x 21 x 28
Power Voltage (lb):	115	Current Type :	-
Power Phase:	1	Power Frequency :	60
Min Voltage :	-	Max Voltage :	-
MCA :	14.1	MOP :	20
Electric Heat Range :	-	Indoor Blower FLA :	-
Fan Motor Output :	-	Outdoor Fan LRA :	-



At Goodman, we believe in American dependability. Units are designed, engineered and assembled in the U.S.A.



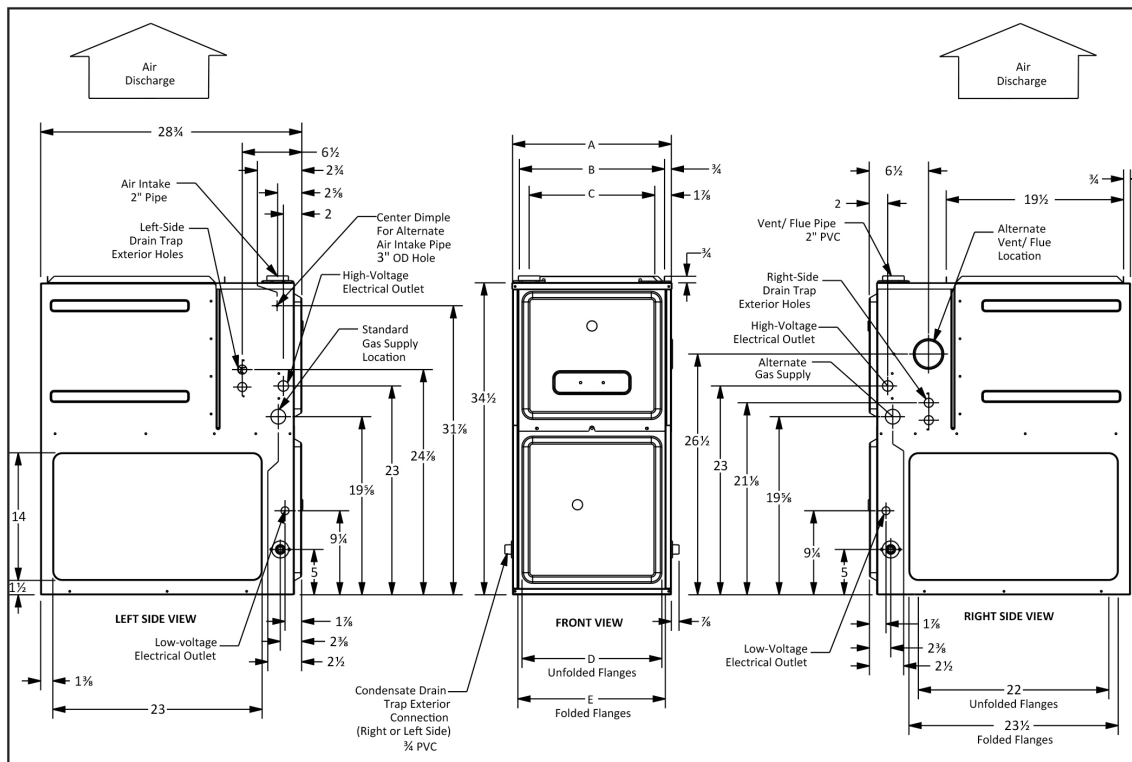
Submittal Data Sheet

15.0 SEER, Heat Pump System, 3.0 Ton, Outdoor Unit-GSZ160361B*

Submitted By : Goodman/Amana Unitary Test System

Submitted To : N/A

Tags : AHRI 207349838 Products [GSZ160361B* , CA*F4860*6D*+TXV, GM9C961004CNA*] , SEER 15.0 , EER 12.5 , HSPF 8.5



MODEL	AIR DISCHARGE			AIR RETURN	
	A	B	C	D	E
GM9C960303ANA	14"	12 1/2"	10 1/2"	8 5/8"	10 5/8"
GM9C960403ANA	14"	12 1/2"	10 1/2"	8 5/8"	10 5/8"
GM9C960603ANA	14"	12 1/2"	10 1/2"	8 5/8"	10 5/8"
GM9C960603BNA	17 1/2"	16"	13 3/8"	12 1/8"	13 3/8"
GM9C960803BNA	17 1/2"	16"	13 3/8"	12 1/8"	13 3/8"
GM9C960804CNA	21"	19 1/2"	17 3/8"	16"	17 1/2"
GM9C961004CNA	21"	19 1/2"	17 3/8"	16"	17 1/2"
GM9C961005CNA	21"	19 1/2"	17 3/8"	16"	17 1/2"
GM9C961205DNA	24 1/2"	23"	20 7/8"	19 3/8"	20 7/8"

MINIMUM CLEARANCES TO COMBUSTIBLE MATERIALS

POSITION	SIDES	REAR	FRONT	BOTTOM	FLUE	TOP
Upflow	0"	0"	3"	C	0"	1"
Horizontal	6"	0"	3"	C	0"	6"

C = If placed on combustible floor, the floor MUST be wood ONLY.



re

