

M-SERIES




SUBMITTAL DATA: MFZ-KJ15NA & MUFZ-KJ15NAHZ 15,000 BTU/H FLOOR-MOUNTED HEAT PUMP SYSTEM



Job Name:

System Reference:

Date:

| Indoor Unit: MFZ-KJ15NA | Outdoor Unit: MUFZ-KJ15NAHZ | Wireless Remote Controller |
|---|--|---|
|  |  |  |

GENERAL FEATURES

- Floor-mounted indoor unit mounts on the floor or up to 5" above the floor
- Floor front panel access to the filter for ease of cleaning
- Perfect for difficult areas that may be smaller or don't have usable space on the walls
- Multiple fan speed options: Quiet, Low, Medium, High, Super-high, Auto
- Quiet operation
- Multi-flow vane for faster heating
- Multiple control options available:
 - Hand-held Remote Controller (provided with unit)
 - kumo cloud® smart device app for remote access
 - Third-party interface options
 - Wired or wireless controllers
- Unit can be recessed mounted into wall

SPECIFICATIONS: MFZ-KJ15NA & MUFZ-KJ15NAHZ

| | | | |
|-------------------------------|---|-------------|-------------------------|
| Cooling ¹ | Maximum Capacity | BTU/H | 19,000 |
| | Rated Capacity | BTU/H | 15,000 |
| | Minimum Capacity | BTU/H | 5,300 |
| | Maximum Power Input | W | 1,850 |
| | Rated Power Input | W | 1,120 |
| | Moisture Removal | Pints/h | 3.9 |
| | Sensible Heat Factor | | 0.66 |
| | Power Factor | % | 96/96 |
| Heating at 47°F ² | Maximum Capacity | BTU/H | 25,000 |
| | Rated Capacity | BTU/H | 18,000 |
| | Minimum Capacity | BTU/H | 5,700 |
| | Maximum Power Input | W | 3,410 |
| | Rated Power Input | W | 1,410 |
| | Power Factor | % | 90 / 90 |
| Heating at 17°F ³ | Maximum Capacity | BTU/H | 20,500 |
| | Rated Capacity | BTU/H | 12,000 |
| | Maximum Power Input | W | 3,190 |
| | Rated Power Input | W | 1,300 |
| Heating at 5°F ⁴ | Maximum Capacity | BTU/H | 18,000 |
| | Maximum Power Input | W | 2,950 |
| Heating at -4°F ⁵ | Maximum Capacity | BTU/H | 15,840 |
| Heating at -13°F ⁶ | Maximum Capacity | BTU/H | 13,860 |
| Efficiency | SEER | | 21.8 |
| | EER ¹ | | 13.5 |
| | HSPF (IV) | | 11.6 |
| | COP at 47°F ² | | 3.74 |
| | COP at 17°F in Maximum Capacity ³ | | 1.88 |
| | COP at 5°F in Maximum Capacity ⁴ | | 1.79 |
| | ENERGY STAR® certified units(ENERGY STAR products are third-party certified by an EPA-recognized Certification Body.) | | YES |
| Electrical | Voltage, Phase, Frequency | | 208/230V, 1 phase, 60Hz |
| | Guaranteed Voltage Range | V AC | 187-253 |
| | Voltage: Indoor - Outdoor, S1-S2 | V AC | 208/230 |
| | Voltage: Indoor - Outdoor, S2-S3 | V DC | 24 |
| | Short-circuit Current Rating (SCCR) | kA | 5 |
| | Recommended Fuse/Breaker Size (Outdoor) | A | 20 |
| | Recommended Wire Size (Indoor - Outdoor) | AWG | 14 |
| Indoor Unit | MCA | A | 1 |
| | MOCP | A | 20 |
| | Blower Motor Full Load Amperage | A | 0.62 |
| | Blower Motor Output | W | 30 |
| | Airflow Rate at Cooling, Dry | CFM | 431-392-311-254-198 |
| | Airflow Rate at Cooling, Wet | CFM | 366-333-264-216-168 |
| | Airflow Rate at Heating, Dry | CFM | 470-399-328-268-212 |
| | Sound Pressure Level (Cooling) | dB(A) | 47-43-38-33-28 |
| | Sound Pressure Level (Heating) | dB(A) | 49-45-40-35-29 |
| | Drain Pipe Size | In. (mm) | 5/8 (15.88) |
| | Heat Exchanger Type | | Plate fin coil |
| | External Finish Color | | White |
| | Unit Dimensions | W: In. (mm) | 29-17/32 (750) |
| | | D: In. (mm) | 8-15/32 (215) |

SPECIFICATIONS: MFZ-KJ15NA & MUFZ-KJ15NAHZ

| | | | |
|--|--|-------------|--------------------------------|
| | Package Dimensions | H: In. (mm) | 23-5/8 (600) |
| | | W: In. (mm) | 32-2/16 (816) |
| | | D: In. (mm) | 10-13/16 (275) |
| | | H: In. (mm) | 27-12/16 (693) |
| | Unit Weight | Lbs. (kg) | 33 (15) |
| | Package Weight | Lbs. (kg) | 41 (18.5) |
| Indoor Unit Operating Temperature Range | Cooling Intake Air Temp (Maximum / Minimum)* | °F | 90 DB / 73 WB // 67 DB / 57 WB |
| | Heating Intake Air Temp (Maximum / Minimum) | °F | 80 DB // 70 DB |
| Outdoor Unit | MCA | A | 16 |
| | MOCP | A | 20 |
| | Fan Motor Full Load Amperage | A | 0.93 |
| | Fan Motor Output | W | 77 |
| | Airflow Rate | CFM | 1,653 / 1,730 |
| | Refrigerant Control | | LEV |
| | Defrost Method | | Reverse cycle |
| | Heat Exchanger Type | | Plate fin coil |
| | Sound Pressure Level, Cooling ¹ | dB(A) | 55 |
| | Sound Pressure Level, Heating ² | dB(A) | 51 |
| | Compressor Type | | DC INVERTER-driven Twin Rotary |
| | Compressor Model | | SNB173FQKMT |
| | Compressor Rated Load Amps | A | 12.0 |
| | Compressor Locked Rotor Amps | A | 15.0 |
| | Compressor Oil Type // Charge | oz. | FV50S // 13.5 |
| | External Finish Color | | Munsell 3Y 7.8/1/1 |
| | Base Pan Heater | | Built-in |
| | Unit Dimensions | W: In. (mm) | 33-1/16 (840) |
| | | D: In. (mm) | 13 (330) |
| | | H: In. (mm) | 34-5/8 (880) |
| | Package Dimensions | W: In. (mm) | 38-9/16 (980) |
| | | D: In. (mm) | 16-9/16 (420) |
| | | H: In. (mm) | 39 (990) |
| | Unit Weight | Lbs. (kg) | 124 (56) |
| | Package Weight | Lbs. (kg) | 144 (65) |
| Outdoor Unit Operating Temperature Range | Cooling Air Temp (Maximum / Minimum)* | °F | 14 to 115 |
| | Cooling Thermal Lock-out / Re-start Temperatures** | °F | 11 / 14 |
| | Heating Air Temp (Maximum / Minimum) | °F | -13 to 75 |
| | Heating Thermal Lock-out / Re-start Temperatures** | °F | -18 / -14 |
| Refrigerant | Type | | R410A |
| | Charge | Lbs, oz | 3, 5 |
| Piping | Gas Pipe Size O.D. (Flared) | In. (mm) | 1/2 (12.7) |
| | Liquid Pipe Size O.D. (Flared) | In. (mm) | 1/4 (6.35) |
| | Maximum Piping Length | Ft. (m) | 100 (30) |
| | Maximum Height Difference | Ft. (m) | 50 (15) |
| | Maximum Number of Bends | | 10 |

SPECIFICATIONS: MFZ-KJ15NA & MUFZ-KJ15NAHZ

Notes

| | | | |
|--|---|----|--------------------------------|
| AHRI Rated Conditions (Rated data is determined at a fixed compressor speed) | ¹ Cooling (Indoor // Outdoor) | °F | 80 DB, 67 WB // 95 DB, 75 WB |
| | ² Heating at 47°F (Indoor // Outdoor) | °F | 70 DB, 60 WB // 47 DB, 43 WB |
| | ³ Heating at 17°F (Indoor // Outdoor) | °F | 70 DB, 60 WB // 17 DB, 15 WB |
| Conditions | ⁴ Heating at 5°F (Indoor // Outdoor) | °F | 70 DB, 60 WB // 5 DB, 4 WB |
| | ⁵ Heating at -4°F (Indoor // Outdoor) | °F | 70 DB, 60 WB // -4 DB, -5 WB |
| | ⁶ Heating at -13°F (Indoor // Outdoor) | °F | 70 DB, 60 WB // -13 DB, -14 WB |
| <p>*Applications should be restricted to comfort cooling only; equipment cooling applications are not recommended for low ambient temperature conditions.</p> <p>**System cuts out in heating mode to avoid thermistor error and automatically restarts at these temperatures.</p> | | | |

ACCESSORIES: MFZ-KJ15NA

| | |
|--|-------------------------|
| Floor Mount Air Guide | □ MAC-760FD-E |
| Anti-allergy Enzyme Filter | □ MAC-408FT-E |
| kumo touch™ RedLINK™ Wireless Controller | □ MHK2 |
| Deluxe MA Remote Controller ¹ | □ PAR-40MAAU |
| Simple MA Controller ¹ | □ PAC-YT53CRAU-J |
| Touch MA Controller ¹ | □ PAR-CT01MAU-SB |
| Wired Remote Sensor | □ M21EAA307 |
| Wireless Temperature and Humidity Sensor | □ PAC-USWHS003-TH-1 |
| System Control Interface ² | □ MAC-334IF-E |
| Wireless Interface 2 | □ PAC-USWHS002-WF-2 |
| Thermostat Interface | □ PAC-US444CN-1 |
| kumo station® | □ PAC-WHS01HC-E |
| USNAP Interface | □ PAC-WHS01UP-E |
| IT Extender | □ PAC-WHS01IE-E |
| BACnet® and MODBUS® Interface | □ PAC-UKPRC001-CN-1 |
| External Fan / Heater Control Relay Adapter | □ CN24RELAY-KIT-CM3 |
| Lockdown Bracket for Hand-held Remote Controllers | □ RCMKP1CB |
| Blue Diamond Sensor Extension Cable — 15 Ft. | □ C13-103 |
| Blue Diamond Alarm Extension Cable — 6.5 Ft. | □ C13-192 |
| Blue Diamond MultiTank — collection tank for use with multiple pumps | □ C21-014 |
| Blue Diamond Rubber Foot Pads | □ F10-010 |
| Mini Condensate Pump — 230 volt application | □ SI30-230 |
| MegaBlue Advanced Blue Diamond Condensate Pump w/ Reservoir & Sensor | □ X87-835 - 110 to 250V |
| MaxiBlue Advanced Blue Diamond Mini Condensate Pump w/ Reservoir & Sensor (110V) up to 48,000 BTU/H[recommended] | □ X87-711 - 110V |
| Advanced Blue Diamond Mini Condensate Pump w/ Reservoir & Sensor (208/230V) [recommended] | □ X87-721 - 208/230V |
| MicroBlue Blue Diamond Mini Condensate Pump (110/208/230V) up to 18,000 BTU/H | □ X85-003 |
| Fascia Kit for MicroBlue Pump – mounts the MicroBlue and sensor directly beneath the indoor unit | □ T18-016 |
| Drain Pan Level Sensor | □ SS610E |
| (30A/600V/UL) [fits 2" X 4" utility box] - Black | □ TAZ-MS303 |
| (30A/600V/UL) [fits 2" X 4" utility box] - White | □ TAZ-MS303W |
| Guides air flow for floor mount model when a concealer is used to hide the floor mount. | □ MAC-760FD-E |

¹ Requires MAC-334IF-E

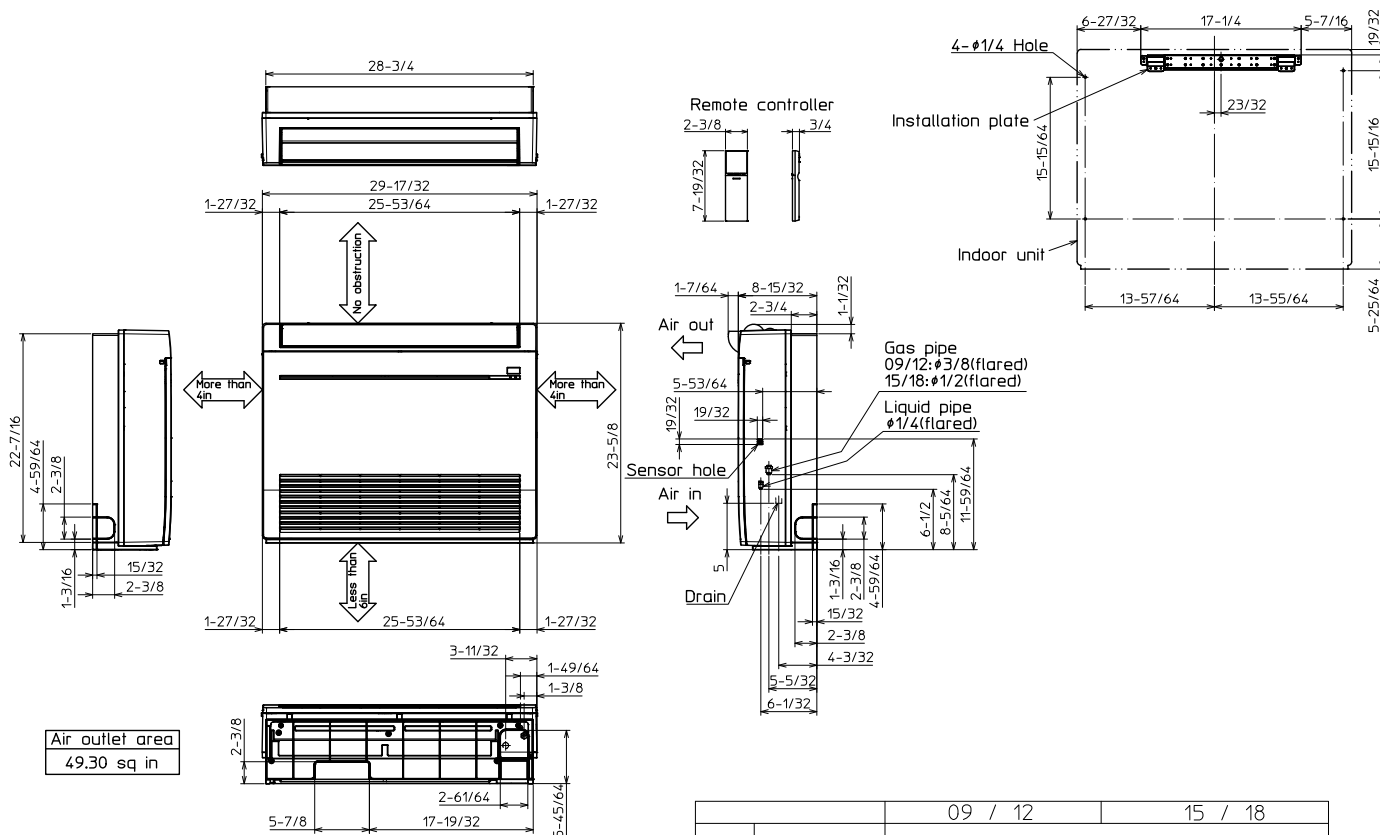
² Allows indoor units to connect to an MA Controller

ACCESSORIES: MUFZ-KJ15NAHZ

| | |
|---|------------------|
| Air Outlet Guide | □ MAC-886SG-E |
| Hail Guard | □ HG-A7 |
| Outdoor Unit 3-1/4 inch Mounting Base (Pair) - Plastic | □ DSD-400P |
| Condensing Unit Mounting Pad 16" x 36" x 3" | □ ULTRILITE1 |
| Outdoor Unit Stand — 12" High | □ QSMS1201M |
| Outdoor Unit Stand — 18" High | □ QSMS1801M |
| Outdoor Unit Stand — 24" High | □ QSMS2401M |
| Heavy Duty Wall Mounting Bracket— Coated Steel | □ QSWB2000M-1 |
| Heavy Duty Wall Mounting Bracket — 316 Series Stainless Steel | □ QSWBSS |
| 15' x 1/4" x 15' / 1/2" Lineset (Twin-Tube Insulation) | □ MLS141212T-15 |
| 30' x 1/4" x 30' / 1/2" Lineset (Twin-Tube Insulation) | □ MLS141212T-30 |
| 50' x 1/4" x 50' / 1/2" Lineset (Twin-Tube Insulation) | □ MLS141212T-50 |
| 65' x 1/4" x 65' / 1/2" Lineset (Twin-Tube Insulation) | □ MLS141212T-65 |
| 100' x 1/4" x 100' / 1/2" Lineset (Twin-Tube Insulation) | □ MLS141212T-100 |

DIMENSIONS: MFZ-KJ15NA

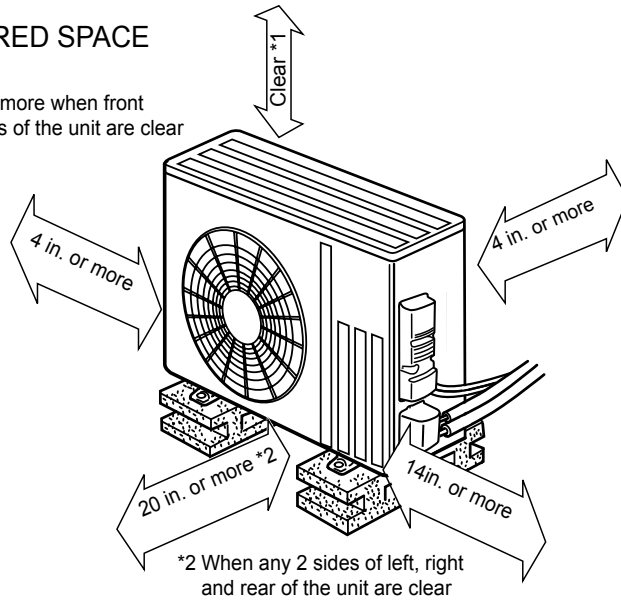
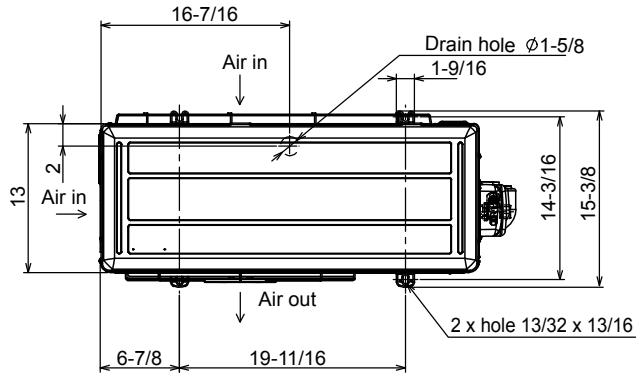
Unit: inch



| | | 09 / 12 | 15 / 18 |
|------------|-----------------|---|--------------------------|
| Pipe cover | For liquid line | 1-1/16 O.D | |
| | For gas line | 1-1/16 O.D | 1-7/32 O.D |
| Piping | Liquid line | Flared connection 1/4 | |
| | Gas line | Flared connection 3/8 | Flared connection 1/2 |
| Drain hose | | Heat insulator 1-9/64 O.D | Connection point 5/8 O.D |
| | | Effective length 13-25/32 (case of right backward piping) | |

REQUIRED SPACE

*1 20 in. or more when front and sides of the unit are clear



*2 When any 2 sides of left, right and rear of the unit are clear

