

Job Name:	
Tag#	



Submittal Data Sheet

FFQ09Q2VJU

.75-Ton Ceiling Mounted Indoor Unit



Complete warranty details available from your local dealer or at www.daikincomfort.com. To receive the 12-Year Parts Limited Warranty, online registration must be completed within 60 days of installation. Online registration is not required in California or Quebec. *If product is installed in a commercial application, limited warranty period is 5 years.*

Electrical

*208/230V

	Cooling	Heating
Running Current (Rated) (A)	.23/.21*	.23/.21*
Power Consumption (Rated) (W)	23/23*	23/23*

Indoor Specifications

Airflow Rate (cfm)	Cooling		Heating	
	H	M	H	M
	378	339	406	353
	L		L	
	268		268	
Sound (dBA) H / M / L	38 / 35 / 29		38 / 35 / 29	
Dimensions (H × W × D) (in)		10-1/4 × 22-5/8 × 22-5/8		
Weight (Lbs)		36		
Nominal Capacity (Btu/hr)		9,000		

*See Outdoor Unit for Rated Capacities

Piping

Liquid (in)	1/4
Gas (in)	3/8
Drain (in)	1-1/32

Standard Equipment

Part Number	Description
6017766	Drain Pump
2139531	Float Switch

Optional Accessories



Included	Part Number	Description
	BRC1E73	Wired Navigation Remote Controller
	BRC082A42W	Wireless Remote Controller (White)
	BRC082A42S	Wireless Remote Controller (Silver)
	BYFQ60C2W1S	Low Profile Decoration Panel (Silver) - 1-13/16 × 24-7/16 × 24-7/16
	BYFQ60C2W1W	Low Profile Decoration Panel (White) - 1-13/16 × 24-7/16 × 24-7/16
	BRYQ60A2S	Sensor kit (Silver) Intelligent Eye, Comfort Airflow, and Floor Sensor
	BRYQ60A2W	Sensor kit (White) Intelligent Eye, Comfort Airflow, and Floor Sensor
	BDBHQ44C60	Sealing member of air discharge outlet
	KAF441C60	Replacement Long Life Filter
	DACA-CP2-1	Maxi Orange Condensate Pump
	DACA-CP3-1	Mini Condensate Pump 5 gph
	AZAI6WSCDKA	DKN Cloud Wi-Fi Adaptor
**One Controller & Decoration Panel are Required		

Daikin North America LLC 5151 San Felipe, Suite 500 Houston, TX 77056

(Daikin's products are subject to continuous improvements. Daikin reserves the right to modify product design, specifications and information in this data sheet without notice and without incurring any obligations)

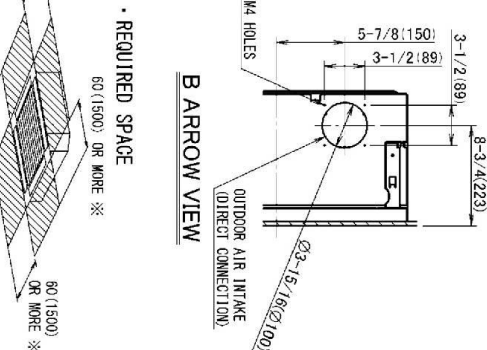
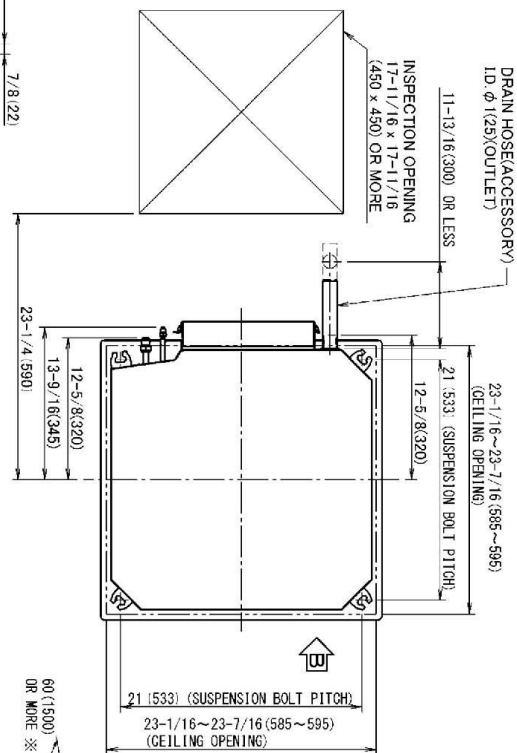
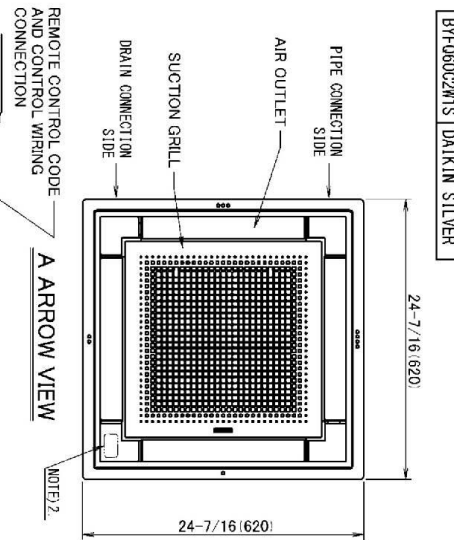
FFQ09Q2VJU Dimensional Data



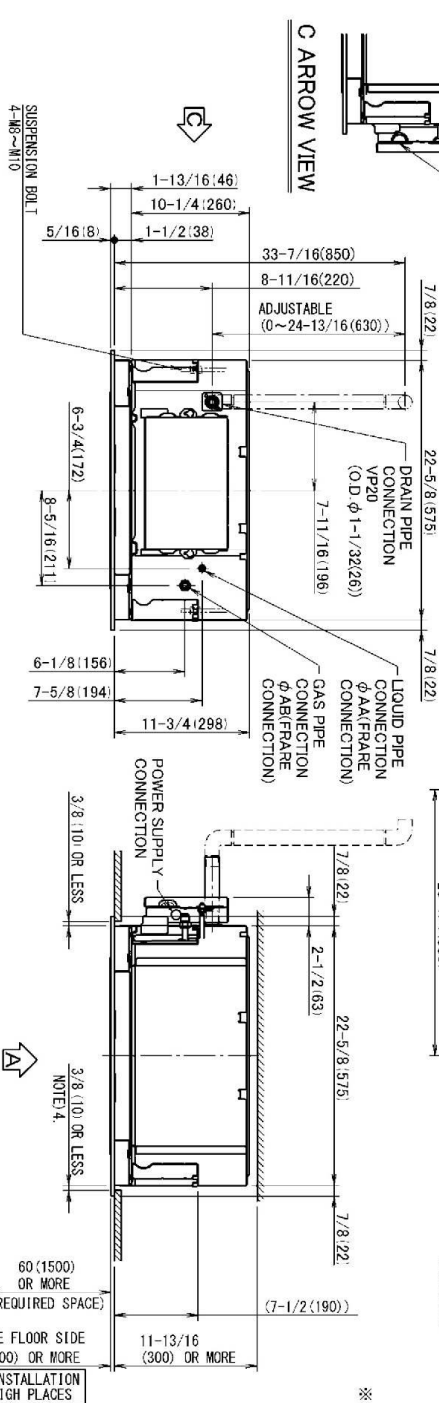
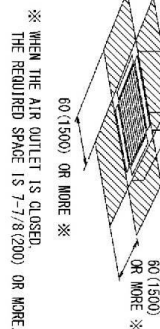
• DECORATION PANEL

BYF060C2W1W	FRESH WHITE NO. 5
BYF060C2W1S	DAIKIN SILVER

UNIT: inch(mm)



• REQUIRED SPACE



- NOTE 1. STICKING LOCATION FOR MANUFACTURE'S LABEL.
 MANUFACTURE'S LABEL FOR INDOOR UNIT: ON THE BELT MOUTH INSIDE SUCTION GRILLE.
 MANUFACTURE'S LABEL FOR DECORATION PANEL: ON THE INNER FRAME INSIDE SUCTION GRILLE.
 2. IN CASE OF USING WIRELESS REMOTE CONTROLLER, THIS POSITION WILL BE A SIGNAL RECEIVER.
 3. REFER TO THE DRAWING OF WIRELESS REMOTE CONTROLLER IN DETAIL.
 4. WHEN THE TEMPERATURE AND HUMIDITY IN THE CEILING EXCEED 88 °C (190 °F) AND RH 80% OR THE FRESH AIR IS INTAKE THROUGH THE OUTDOOR AIR INTAKE, THE CEILING OPENING MUST BE 17-11/16 (450) OR MORE.
 5. THROUGH THE INSTALLATION IS ACCEPTABLE UP TO MAXIMUM OF 23-7/16 (595) SQUARE CEILING OPENING.
 6. KEEP THE CLEARANCE OF 3/8 (10) OR LESS BETWEEN THE MAIN UNIT AND THE CEILING OPENING SO THAT THE PANEL OVERLAP ALLOWANCE CAN BE ENSURED.

MODEL	MA	AB
FFQ09Q2VJU	1/4 (6.4)	3/8 (9.5)
FFQ12Q2VJU		1/2 (12.7)
FFQ15Q2VJU		
FFQ18Q2VJU		

3D106039

Daikin North America LLC 5151 San Felipe, Suite 500 Houston, TX 77056

(Daikin's products are subject to continuous improvements. Daikin reserves the right to modify product design, specifications and information in this data sheet without notice and without incurring any obligations)

Submittal Revision Date: January 2020

Page 2 of 2