

For: ☐ File ☐ Resubmit ☐ Approval ☐ Other _____

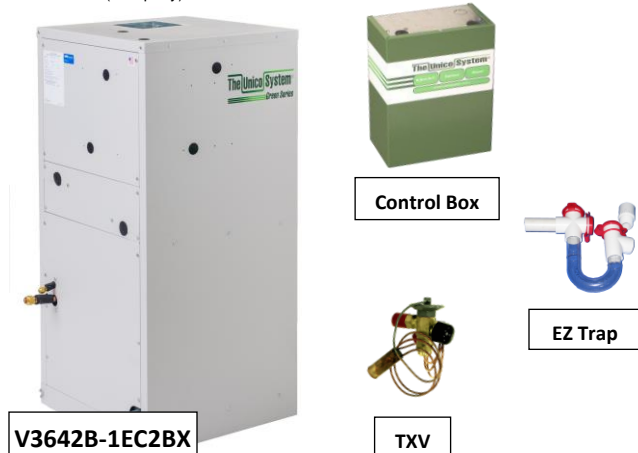
V3642B-1EC1/EC2BX

3.5-ton Vertical AHU

Job Name:	Location:
Date:	Tag #:
Architect:	Engineer:
Mechanical:	Distributor:
Rep:	

(Company)

(Project Manager)



V3642B-1EC2BX

Features

- Easy service EC Motor (Variable Speed)
- Removable access panels for ease of service
- ASHRAE 62.2-2010 ventilation mode
- Use as cooling only or heat pump
- Optional hot water coil for heating
- Heavy-duty closed cell insulation (no exposed fiberglass insulation)
- Includes (shipped loose):
 - R-410A TXV
 - Condensate trap
 - S.M.A.R.T. control board

Indoor Unit Size

3642

General Data:

Compatible Outdoor unit nominal capacity	3.0 to 4.0-ton* (7.0 to 10.5 kW)
Fan Speeds	Variable
Maximum Motor Speed	1800 RPM
Nominal Airflow	900 CFM (425 L/s)
Static Pressure at Nominal Airflow	1.5 in. w.g. (0.373 kPa)
Sound Pressure (high)	56 dB(A)
Rated performance	see AHRI directory**
Net coil face area	4.75 ft ² (0.44 m ²)
Tube diameter	3/8 in. (9.52 mm)
Number of rows	3 (B) 4 (E)
Number of Circuits	6 (B) 8 (E)
Fin density	15/in. (590/m) (B) 14/in. (551/m) (E)
Design pressure	500 psig (3.45 MPa)
Refrigerant type	R410A, R22, R407C
Suction line size	3/4 in. (19.05 mm) OD
Liquid line size	3/8 in. (9.52 mm) OD
Drain size	3/4" FNPT
Net unit weight	163 lbs. (74 kg)
Shipping Weight	227 lbs. (103 kg)

* Use 4-ton TXV (A00808-015) when matched to a 4-ton outdoor unit

** www.ahridirectory.org

Operating Range:

Nominal Capacity	3.5-ton (10.5 kW)
Airflow Range	300 to 1200 CFM (510 to 2039 m ³ /h)

Electrical:

Motor Type	1EC1	1EC2
Electrical Power	1Ph, 50/60 Hz, 1 HP (0.75 kW)	
Voltage	120V	208-230 V
Min. Circuit Ampacity	12.8 A	7.7 A
Max. Overcurrent Protection	20 A	15 A
Motor Full Load Current	10.5 A	6.1 A
Allowable Breaker Sizes	20 A	15 A

Optional Accessories:

- ☐ Hot water coil (HW-3642)
- ☐ Control box extension cable, 98" (2.5 m) (A01525-G02)

Notes:

1. All wiring and piping must comply with applicable local and national code.
2. Absolute operating voltage range: 198 – 253V.
3. Refer to installation manual for more information.

Model Number Key:

V	3642	B	-	1	EC*	B	X
Model Series	Matching ODU Nominal Capacity	Configuration		Revision	Motor Style	Cooling Coil	Heating Coil
V = Vertical	3642 = 36000 to 42000 Btu/hr	B = Both			EC1 = 120V EC2 = 208 – 230V	B = 3 rows E = 4 rows	X = None H = Hot Water Coil

ODU = Outdoor Unit

Note – for continuous product improvement, Unico reserves the right to change specifications without notice.

© 2018 Unico, Inc., Arnold, MO. "Unico System" is a registered trademark of Unico, Inc. (www.unicosystem.com)

SB-V3642B-EC1/EC2BX.002 (20180510)

Page 1 of 2

V3642B-1EC1/EC2BX

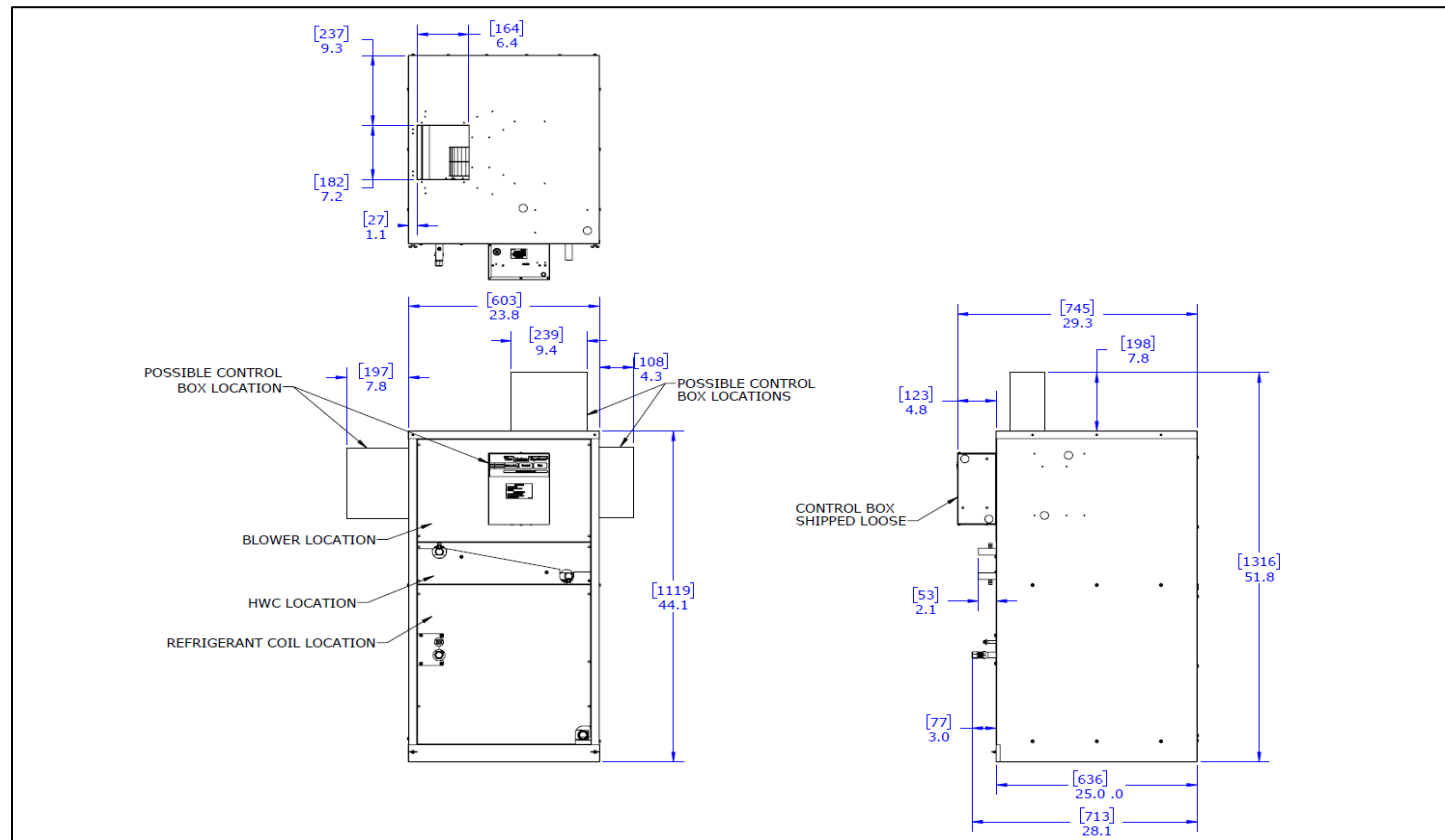
Job Name:

Location:

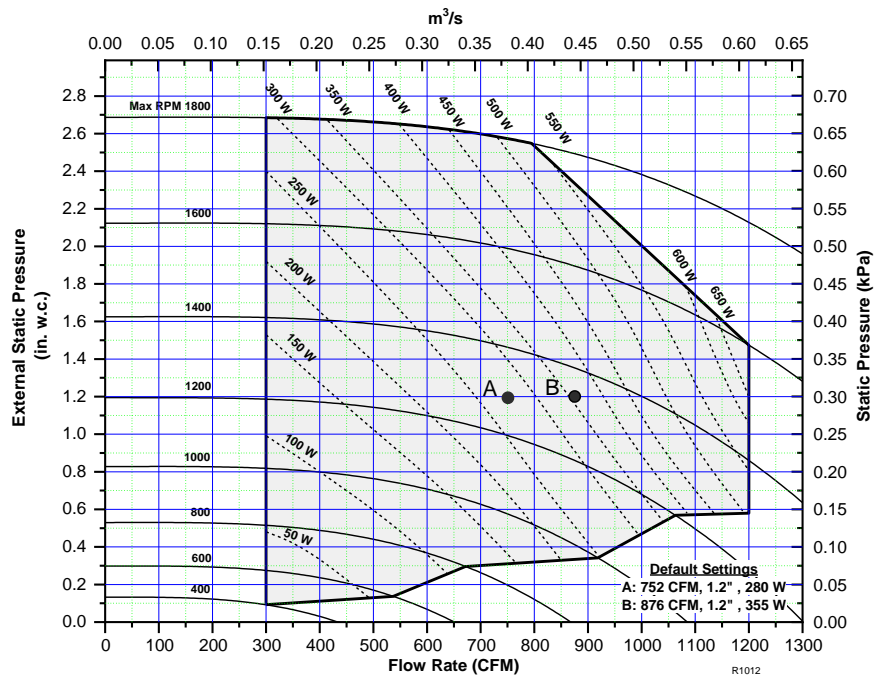
Date:

Tag #:

RETURN AIR PLENUM MODULE DIMENSIONS



* Contact Unico for dimensions of assembled modules.



Unico, Inc.
<http://tech.unicosystem.com>
 314-481-9000
 800-527-0896
 sales@unicosystem.com



Note – for continuous product improvement, Unico reserves the right to change specifications without notice.

© 2018 Unico, Inc., Arnold, MO. "Unico System" is a registered trademark of Unico, Inc.

SB- V3642B-EC1/EC2BX.002 (20180510)

Page 2 of 2