

For: ☐ File ☐ Resubmit ☐ Approval ☐ Other \_\_\_\_\_

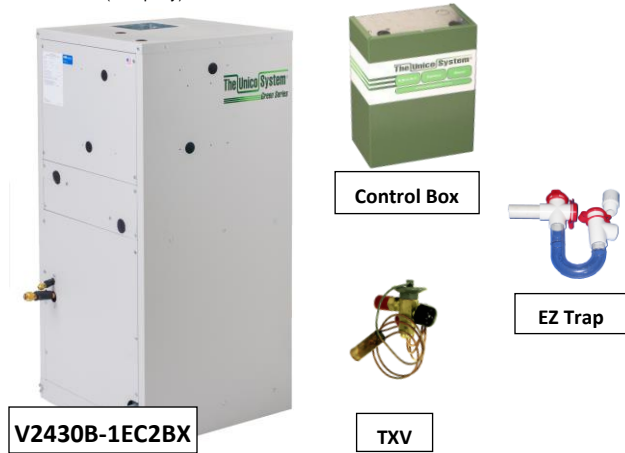
## V2430B-1EC1/EC2BX

### 2.5-ton Vertical AHU

Job Name:	Location:
Date:	Tag #:
Architect:	Engineer:
Mechanical:	Distributor:
Rep:	

(Company)

(Project Manager)



#### Features

- Easy service EC Motor (Variable Speed)
- Removable access panels for ease of service
- ASHRAE 62.2-2010 ventilation mode
- Use as cooling only or heat pump
- Optional hot water coil for heating
- Heavy-duty closed cell insulation (no exposed fiberglass insulation)
- Includes (shipped loose):
  - R-410A TXV
  - Condensate trap
  - S.M.A.R.T. control board

Indoor Unit Size

# 2430

#### General Data:

Compatible Outdoor unit nominal capacity	1.5 to 2.5-ton (5 to 9 kW)
Fan Speeds	Variable
Maximum Motor Speed	1800 RPM
Nominal Airflow	600 CFM (283 L/s)
Static Pressure at Nominal Airflow	1.5 in. w.g. (0.373 kPa)
Sound Pressure (high)	56 dB(A)
Rated performance	see AHRI directory*
Net coil face area	2.72 ft <sup>2</sup> (0.25 m <sup>2</sup> )
Tube diameter	3/8 in. (9.52 mm)
Number of rows	3 (B) 4 (E)
Number of Circuits	4 (B) 6 (E)
Fin density	15/in. (590/m) (B) 14/in. (551/m) (E)
Design pressure	500 psig (3.45 MPa)
Refrigerant type	R410A, R22, R407C
Suction line size	5/8 in. (15.88 mm) OD
Liquid line size	3/8 in. (9.52 mm) OD
Drain size	3/4" FNPT
Net unit weight	117 lbs. (53 kg)
Shipping Weight	177 lbs. (80 kg)

\* www.ahridirectory.org

#### Operating Range:

Nominal Capacity	2.5-ton (9 kW)
Airflow Range	200 to 740 CFM (350 to-1257 m <sup>3</sup> /h)

#### Electrical:

Motor Type	1EC1	1EC2
Electrical Power	1Ph, 50/60 Hz, 1/2 HP (0.37kW)	
Voltage	120V	208-230 V
Min. Circuit Ampacity	7.0 A	4.0 A
Max. Overcurrent Protection	15 A	
Motor Full Load Current	5.6 A	3.2 A
Allowable Breaker Sizes	15 A	

#### Optional Accessories:

- ☐ Hot water coil (HW-2430)
- ☐ Control box extension cable, 98" (2.5 m) (A01525-G02)

#### Notes:

1. All wiring and piping must comply with applicable local and national code
2. Absolute operating voltage range: 198 – 253V.
3. Refer to installation manual for more information.

#### Model Number Key:

V	2430	B	-	1	EC*	B	X
Model Series	Matching ODU Nominal Capacity	Configuration		Revision	Motor Style	Cooling Coil	Heating Coil
V = Vertical	2430 = 24000 to 30000 Btu/hr	B = Both			EC1 = 120V EC2 = 208 – 230V	B = 3 rows E = 4 rows	X = None H = Hot Water Coil

ODU = Outdoor Unit

Note – for continuous product improvement, Unico reserves the right to change specifications without notice.

© 2018 Unico, Inc., Arnold, MO. "Unico System" is a registered trademark of Unico, Inc. (www.unicosystem.com)

SB-V2430B-EC1/EC2BX.002 (20180504)

Page 1 of 2

# V2430B-1EC1/EC2BX

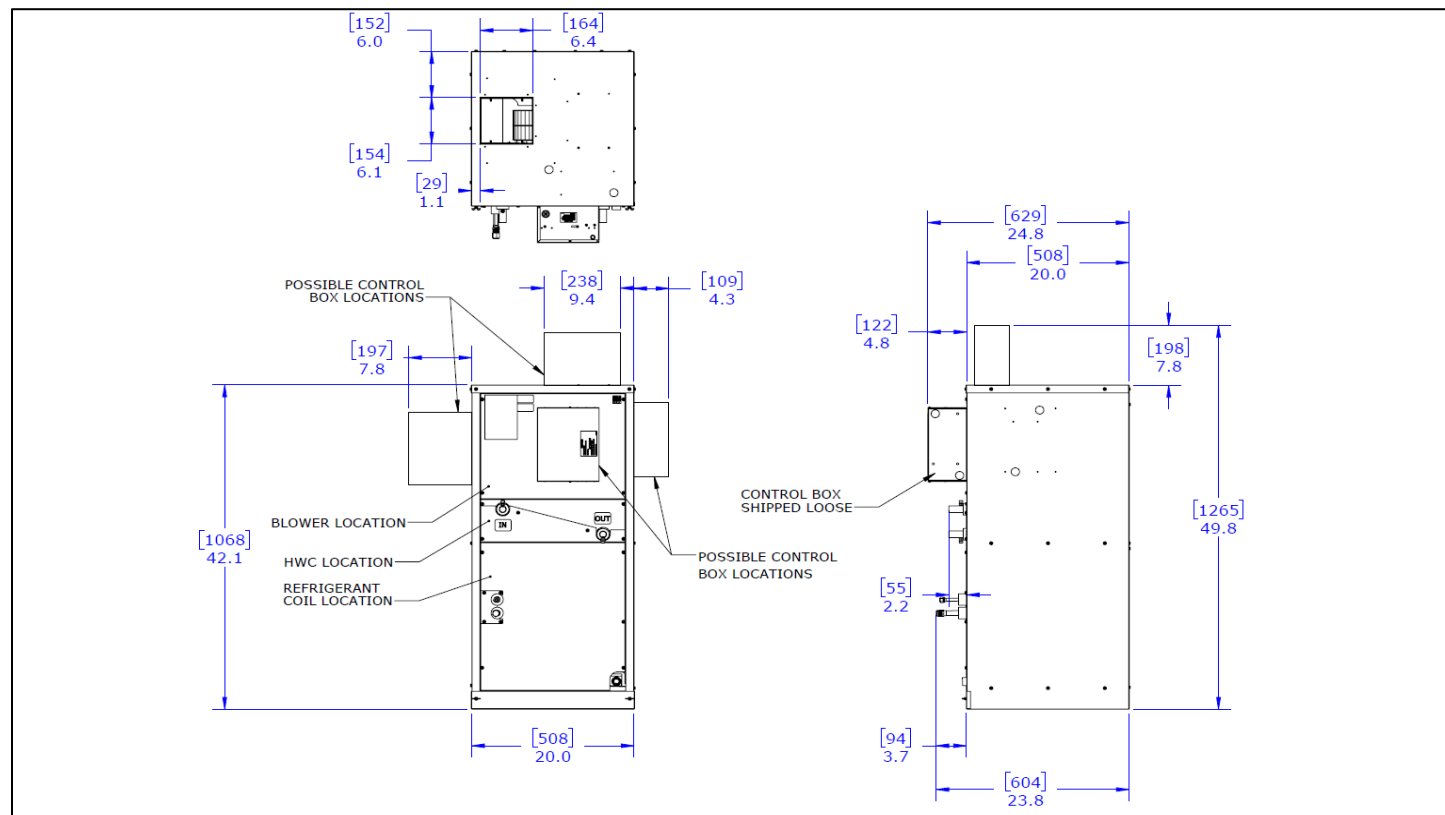
Job Name:

Location:

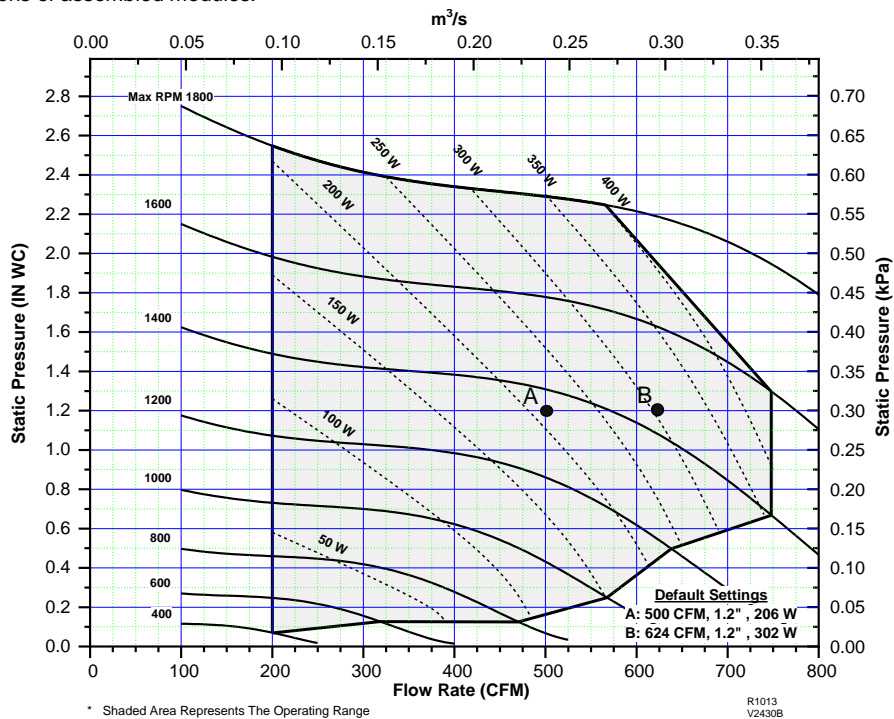
Date:

Tag #:

## RETURN AIR PLENUM MODULE DIMENSIONS



\* Contact Unico for dimensions of assembled modules.



Unico, Inc.  
<http://tech.unicosystem.com>  
 314-481-9000  
 800-527-0896  
 sales@unicosystem.com



Note – for continuous product improvement, Unico reserves the right to change specifications without notice.

© 2018 Unico, Inc., Arnold, MO. "Unico System" is a registered trademark of Unico, Inc.

SB- V2430B-EC1/EC2BX.002 (20180504)

Page 2 of 2