

Job Name:	
Tag#	



Submittal Data Sheet

RMXS48LVJU

4-Ton Multi-Split Outdoor Unit



Complete warranty details available from your local dealer or at www.daikincomfort.com. To receive the 12-Year Parts Limited Warranty, online registration must be completed within 60 days of installation. Online registration is not required in California or Quebec. *If product is installed in a commercial application, limited warranty period is 5 years.*

Outdoor Specifications

Compressor	Hermetically Sealed Scroll Type
Refrigerant	R-410A
Refrigerant Oil	DAPHNE (FVC68D)
Airflow Rate (cfm)	3,740
Sound Pressure Level (dBA)	57 / 58
Dimensions (H x W x D) (in)	52-15/16 x 35-7/16 x 12-5/8
Weight (Lbs)	283

Efficiency

	SEER	EER	HSPF
Non-Ducted	18.8	10.3	11.3
Ducted	14.1	9.3	9.6

Performance

Cooling (Btu/hr)

Rated	48,000
Operating Range	23°F – 115°F

Rated Cooling Conditions: Indoor: 80°F DB/67°F WB
Outdoor: 95°F DB/75°F WB

Heating (Btu/hr)

Rated	54,000
Operating Range	5°F – 60°F

Rated Heating Conditions: Indoor: 70°F DB/60°F WB
Outdoor: 47°F DB/43°F WB

Electrical

	208/60/1	230/60/1
System MCA	27	27
System MFA	30	30
Compressor RLA	22.7	20.5
Outdoor fan motor FLA	.30 x 2	.30 x 2
Outdoor fan motor W	70 x 2	70 x 2

MFA: Max. fuse amps MCA: Min. circuit amps (A) FLA: Full load amps (A)
RLA: Rated load amps (A) W: Fan motor rated output (W)

Piping

Liquid (in) – Flare Connection	3/8
Gas (in) – Brazing Connection	3/4
Drain (in)	1

Optional Accessories



Included	Part Number	Description
	KKPJ5F180	Drain Plug
	BPMKS048A2U	Branch Port Unit – 2 Port
	BPMKS049A3U	Branch Port Unit – 3 Port
	KHRP26A22T9	REFNET Joint

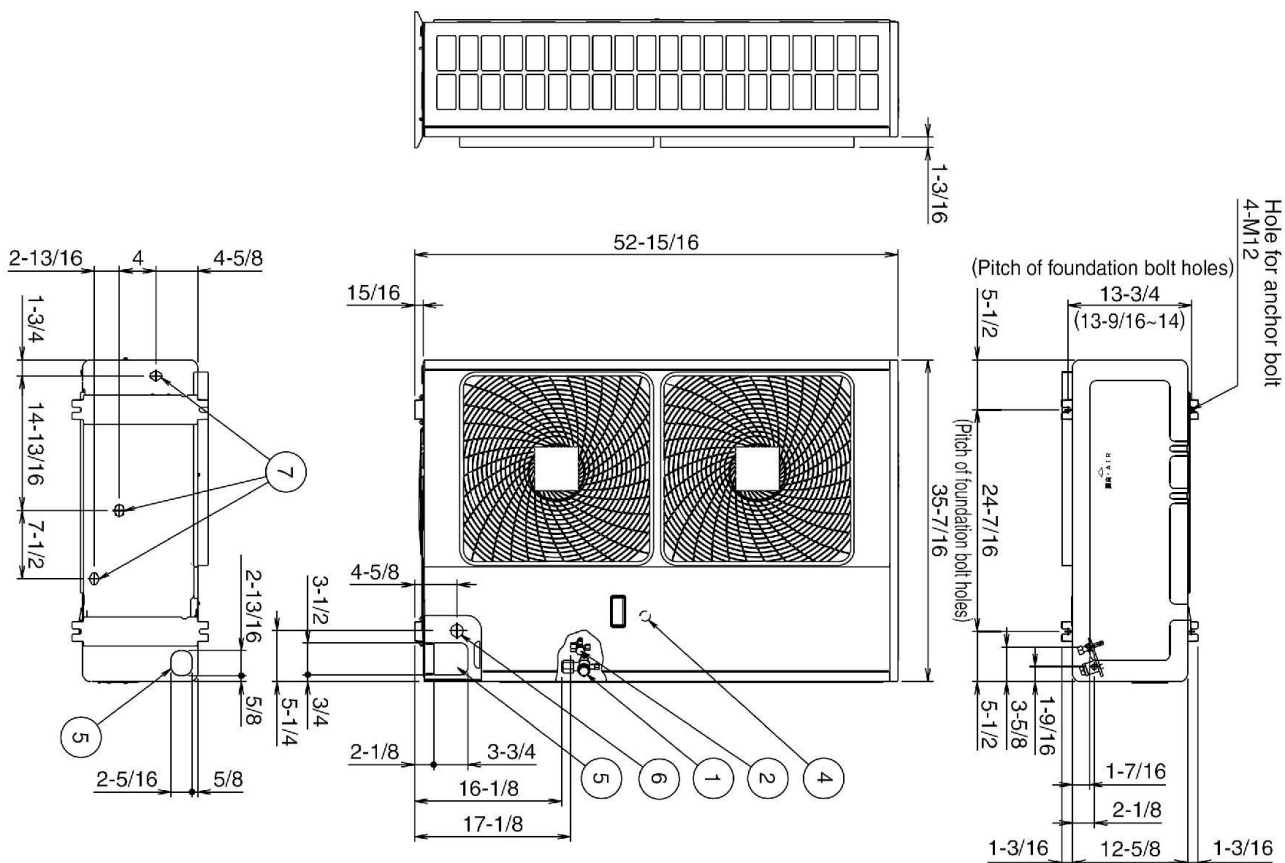
Daikin North America LLC 5151 San Felipe, Suite 500 Houston, TX 77056

(Daikin's products are subject to continuous improvements. Daikin reserves the right to modify product design, specifications and information in this data sheet without notice and without incurring any obligations)

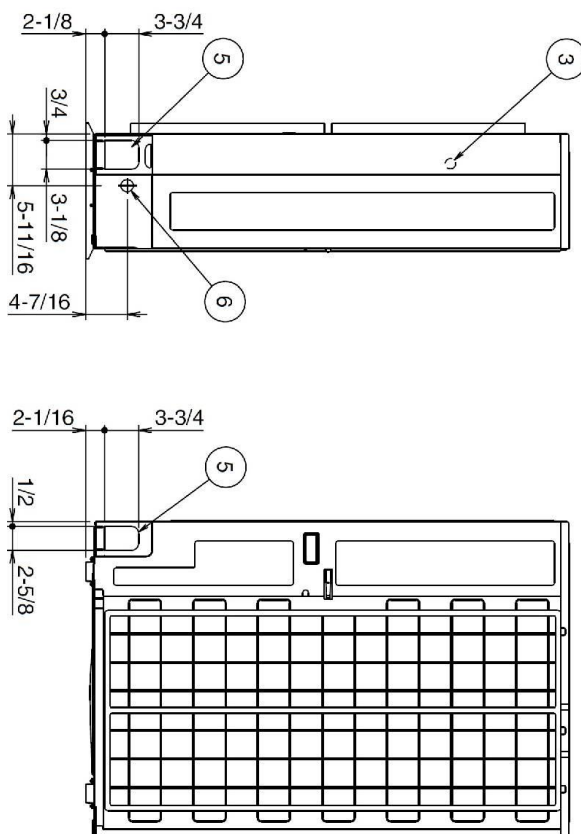
Submittal Revision Date: December 2020

Page 1 of 4

RMXS48LVJU Dimensional Data



NO.	Parts name	Remarks
1	Gas pipe connection	3/4" Brazing
2	Liquid pipe connection	3/8" Flare
3	Service port	In the unit
4	Grounding terminal	In switch box (M5)
5	Refrigerant piping intake	
6	Power supply wiring or transmission wiring intake	φ7/8" Knockout hole
7	Drain pipe connection	Outside diameter φ1" 3pointis



3D080736

Daikin North America LLC 5151 San Felipe, Suite 500 Houston, TX 77056

(Daikin's products are subject to continuous improvements. Daikin reserves the right to modify product design, specifications and information in this data sheet without notice and without incurring any obligations)

Submittal Revision Date: December 2020

Page 2 of 4

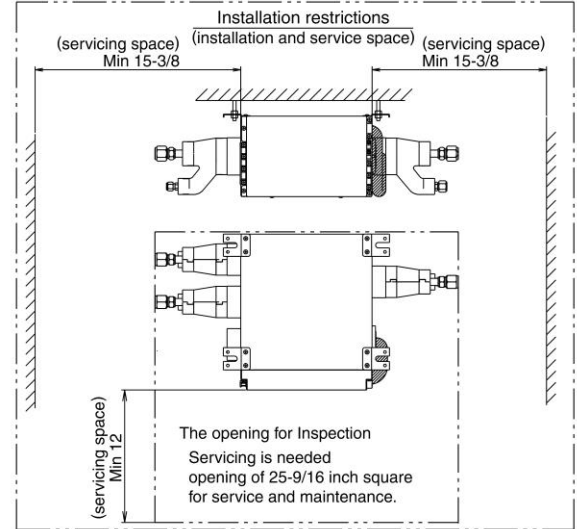
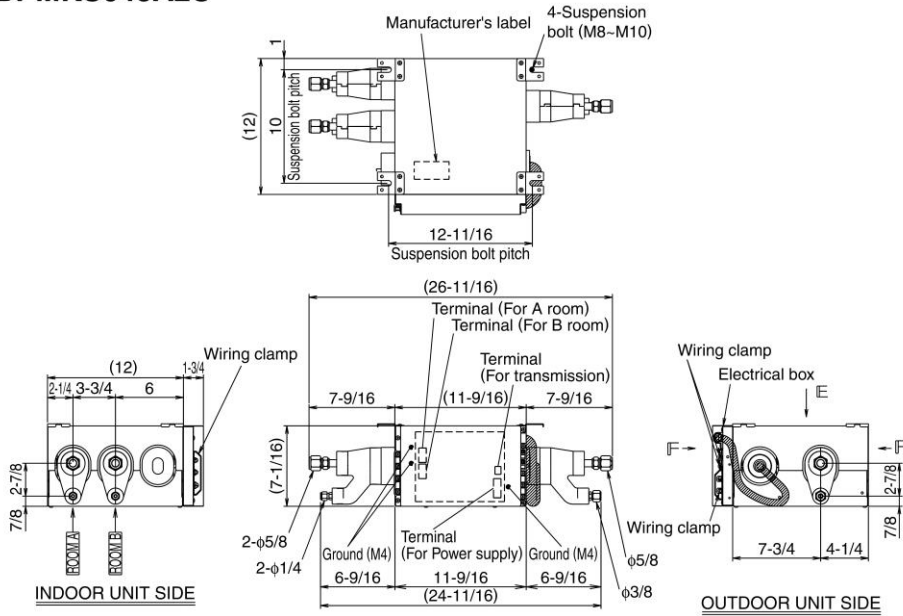
BP Unit Specifications



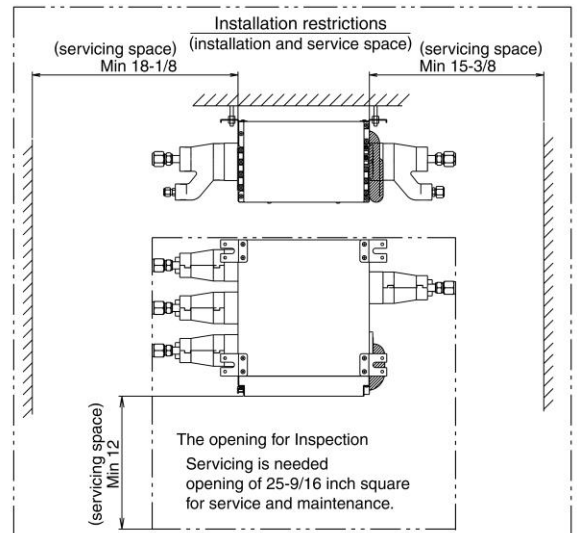
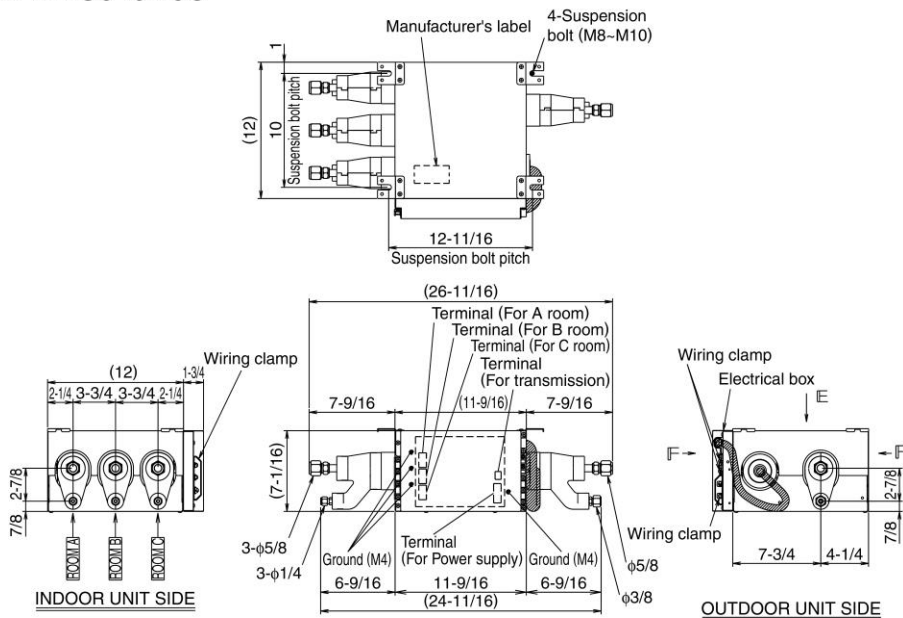
Specifications

	BPMKS048A2U	BPMKS049A3U
Power Consumption (W)	10	10
Running Current (A)	.05	.05
Weight (Lbs)	18	20

BPMKS048A2U

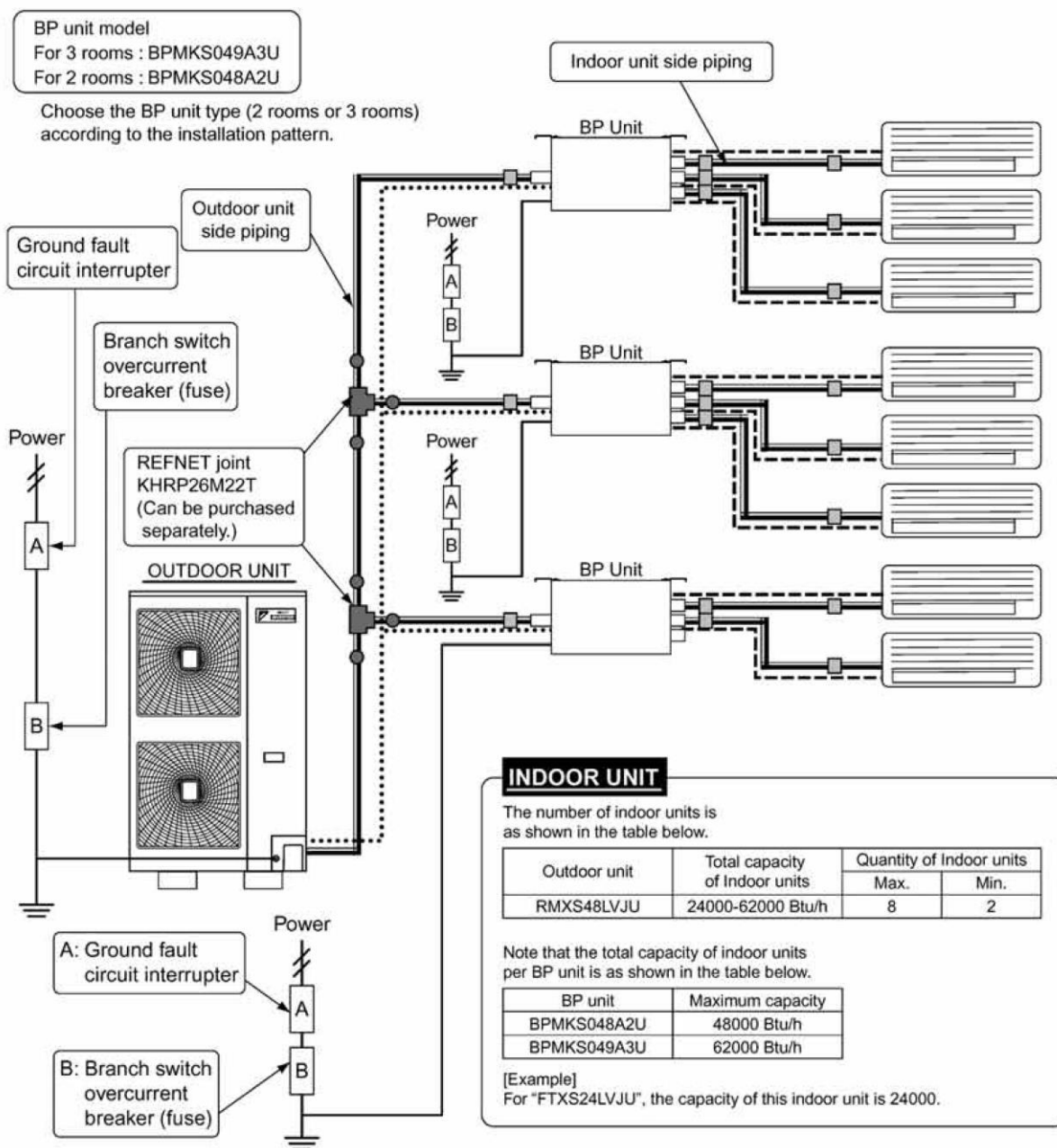


BPMKS049A3U



Daikin North America LLC 5151 San Felipe, Suite 500 Houston, TX 77056

(Daikin's products are subject to continuous improvements. Daikin reserves the right to modify product design, specifications and information in this data sheet without notice and without incurring any obligations)



****Note: For Match-up and Capacities consult with your Daikin Representative**