

# One Choice. Greater Impact.

---



## M-SERIES™ - Optimized for Multi-family

Integrated heating and cooling systems in a tiny 3' x 3' footprint.



Design Your Vision



All-In-One HVAC Products



Faster Installation



Simplified Maintenance



## MagicPak™ makes every job easier.

MagicPak M-Series™ heating and cooling units are the ideal choice for multi-family buildings. The perfect combination of performance, convenience and flexibility, these self-contained units are simple to install and easy to maintain.



Concealed in a closet, the M-Series unit is easily accessible for maintenance.

## Efficiency At Every Step

### Plug-and play design

- Saves time and money during installation.

### Self-contained design

- Reduces commissioning time at building completions.

### Forward-facing components

- Make units easy to access from one location.

### No outdoor elements

- Such as refrigerant lines or condensing units are needed.

## Simplifying the specification & installation process.

### All-in-one, compact units

- Simplify specification during the design phase.

### Uniform design offers consistency

- From room to room and floor to floor, reducing installation time and costs.

### Internally fastened units

- Reduce the need for external base pads, chaseways and utility connections.



### 1. Self-contained unit arrives.

MagicPak All-In-One™ HVAC Systems







## Free Your Vision.

### Compact design

- Minimizes building penetration.

### Maintains indoor design aesthetic

- With closet-mounted units installed discreetly out of sight.

### Customizable exterior louvers

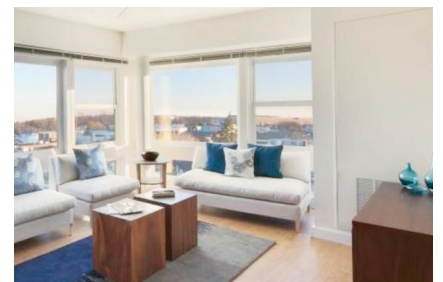
- Extend creative possibilities, without compromising the building's façade.



2. Plug-and-play installation.



3. Installation Complete.



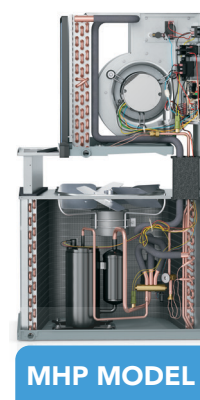
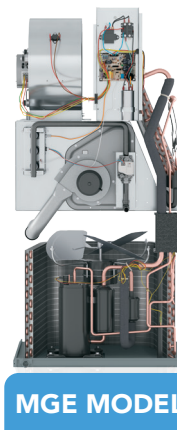
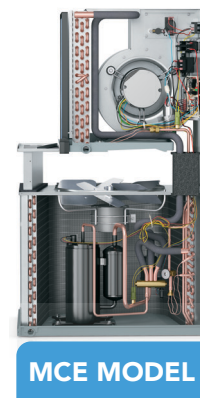
4. Out of sight, out of mind.

# Inside MagicPak™

## M-Series™

### Specifications

- Available in 0.75-, 1-, 1.5-, 2-, 2.5- and 3-ton capacities
- Minimum 11 EER efficiency rating on all units
- Convenient toolless filter access
- Optional Climate Guard™ epoxy-coated coils
- Standard stainless-steel heat exchanger on MGE model
- Top supply and return ducting
- Factory-installed evaporator drain float switch
- Factory-installed ventilation capabilities
- 5-year limited warranty on parts
- 20-year warranty on stainless-steel heat exchanger



### ELECTRIC/ELECTRIC | MCE MODEL

- Electric heating range of 3 - 10 KW
- Cooling range of 8,600 - 34,800 BTU/HR

### GAS/ELECTRIC | MGE MODEL

- Gas heating range of 15,000 - 60,000 BTU/HR
- Cooling range of 8,600 - 34,200 BTU/HR

### ELECTRIC HEAT PUMP | MHP MODEL

- A COP of 3.3; Electric heating range of 3 - 10KW
- Cooling range of 8,600 - 34,600 BTU/HR
- Heating range of 5,200 - 32,400 BTU/HR

