

Submittal Data Sheet

14.0 SEER, Air Conditioner System, 1.5 Ton, Outdoor Unit-GSX130181E*

Submitted By : Goodman/Amana Unitary Test System

Submitted To : N/A

Tags : AHRI 204541890 Products [GSX130181E* , CA*FA2318*6A*+TXV+HSK, GMES800603ANA*] , SEER 14.0 , EER 11.5

STANDARD FEATURES:

- Energy-efficient compressor
- Single-speed PSC condenser fan motor
- Factory-installed filter drier
- Fully charged for fifteen feet of tubing length
- Contactor with lug connection
- AHRI Certified - ETL Listed
- Ground lug connection
- Copper tube & enhanced aluminum fin coil

CABINET FEATURES:

- Heavy-gauge galvanized steel cabinet and louvered coil guards
- Service valves with sweat connections and easy-access gauge ports
- Engineered sound control top design
- Baked-on powder-paint finish with 500-hour salt-spray approval
- Single-panel access to controls with space for field-installed accessories
- Service port and controls are accessible while unit is operating
- Compact footprint
- Rust-resistant screws
- When properly anchored, meets the 2017 Florida Building Code unit integrity requirements for hurricane-type winds (Anchor bracket kits available.)



At Goodman, we believe in American dependability. Units are designed, engineered and assembled in the U.S.A.



Submittal Data Sheet

14.0 SEER, Air Conditioner System, 1.5 Ton, Outdoor Unit-GSX130181E*

Submitted By : Goodman/Amana Unitary Test System

Submitted To : N/A

Tags : AHRI 204541890 Products [GSX130181E* , CA*FA2318*6A*+TXV+HSK, GMES800603ANA*] , SEER 14.0 , EER 11.5

SYSTEM PERFORMANCE

Outdoor Unit Model No.:	GSX130181E*	Description :	14.0 SEER, Air Conditioner System, 1.5 Ton Outdoor System
Indoor Unit Model No.:	CAPFA2318A6A*		
TXV/PISTON :	TX2N4A		
Furnace Unit Model No.:	GMES800603AN		
Rated Cooling Conditions:	Outdoor (°F DB/WB):95/75 Indoor (°F DB/WB):80/67	Rated Heating Conditions:	Outdoor (°F DB/WB):N/A/N/A Indoor (°F DB/WB):N/A/N/A
Rated Cooling Capacity (Btu/hr):	17600	OD Rated Heating Capacity (Btu/hr)	N/A
EER:	11.5	Heating COP:	N/A
SEER:	14.0	AFUE:	80

OUTDOOR UNIT DETAILS : GSX130181E*

Power Supply (V/Hz/Ph):	208/230/60/1	Compressor Type:	Rotary
Min. Circuit Amps MCA (A):	8.2	Compressor Stages:	Single Stage
Max Overcurrent Protection (MOP) (A):	15	Suction Valve Connection Size (in):	3/4
Compressor Rated Load Amps :	6.0	Liquid Valve Connection Size (in):	3/8
Refrigerant Type:	R-410A	Sound Power(High/Med/Low) (dBA):	75 / - / N/A
Holding Refrigerant Charge (oz):	58	Cooling Operation Range (°F DB):	55 - 125
Additional Charge (oz/ft):	0.60	Heating Operation Range (°F DB):	N/A
Pre-charge Piping (Length) (ft):	15	Net Weight (lb):	102
Dimensions (HxWxD) (in):	27-1/2 x 23-1/4 x 23-1/4	Gross Weight (lb):	119
*Max. Pipe Length (Vertical) (ft):	50	*Max. Pipe Length (Total) (ft):	80

**Refer to Long Line Set Application TP-107 for lines greater than 80 ft. or vertical elevation changes more than 50 ft. for single stage equipment and 25 ft. for 2-stage equipment.*



At Goodman, we believe in American dependability. Units are designed, engineered and assembled in the U.S.A.



Submittal Data Sheet

14.0 SEER, Air Conditioner System, 1.5 Ton, Outdoor Unit-GSX130181E*

Submitted By : Goodman/Amana Unitary Test System

Submitted To : N/A

Tags : AHRI 204541890 Products [GSX130181E* , CA*FA2318*6A*+TXV+HSK, GMES800603ANA*] , SEER 14.0 , EER 11.5



At Goodman, we believe in American dependability. Units are designed, engineered and assembled in the U.S.A.



Submittal Data Sheet

14.0 SEER, Air Conditioner System, 1.5 Ton, Outdoor Unit-GSX130181E*

Submitted By : Goodman/Amana Unitary Test System

Submitted To : N/A

Tags : AHRI 204541890 Products [GSX130181E* , CA*FA2318*6A*+TXV+HSK, GMES800603ANA*] , SEER 14.0 , EER 11.5

STANDARD FEATURES:

- Compact and lightweight all-aluminum evaporator coil with AlumaFin7™ technology
- Optimized for use with R-410A refrigerant
- Check flowrator for cooling and heat pump applications
- Vertical application
- 21" depth for easier attic access
- Foil-faced insulation covers the internal casing to reduce cabinet condensation
- Galvanized, leather grain-embossed finish
- Rust resistant, thermoplastic drain pans featuring a low water-retention design
- AHRI certified
- ETL listed

CABINET FEATURES:

- **DATA IS NOT AVAILABLE**



At Goodman, we believe in American dependability. Units are designed, engineered and assembled in the U.S.A.



Submittal Data Sheet

14.0 SEER, Air Conditioner System,1.5 Ton, Outdoor Unit-GSX130181E*

Submitted By : Goodman/Amana Unitary Test System

Submitted To : N/A

Tags : AHRI 204541890 Products [GSX130181E* , CA*FA2318*6A*+TXV+HSK, GMES800603ANA*] , SEER 14.0 , EER 11.5

INDOOR UNIT DETAILS : CAPFA2318A6A*

Dimensions (HxWxD) (in) :	18 x 14 x 21	Suction Connection Size (in) :	3/4
Net Weight (lb):	33	Liquid Connection Size (in) :	3/8
Gross Weight (lb):	34	Condensate Connection (in) :	3/4



At Goodman, we believe in American dependability. Units are designed, engineered and assembled in the U.S.A.



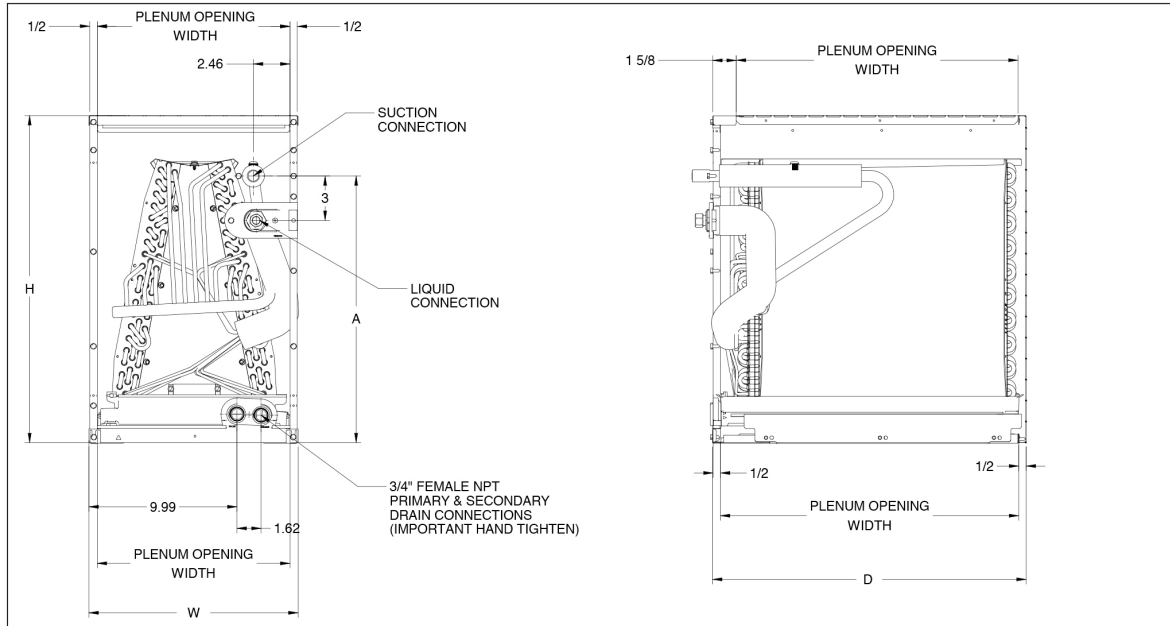
Submittal Data Sheet

14.0 SEER, Air Conditioner System, 1.5 Ton, Outdoor Unit-GSX130181E*

Submitted By : Goodman/Amana Unitary Test System

Submitted To : N/A

Tags : AHRI 204541890 Products [GSX130181E* , CA*FA2318*6A*+TXV+HSK, GMES800603ANA*] , SEER 14.0 , EER 11.5



At Goodman, we believe in American dependability. Units are designed, engineered and assembled in the U.S.A.



Submittal Data Sheet

14.0 SEER, Air Conditioner System, 1.5 Ton, Outdoor Unit-GSX130181E*

Submitted By : Goodman/Amana Unitary Test System

Submitted To : N/A

Tags : AHRI 204541890 Products [GSX130181E* , CA*FA2318*6A*+TXV+HSK, GMES800603ANA*] , SEER 14.0 , EER 11.5

STANDARD FEATURES:

- Heavy-duty aluminized-steel tubular heat exchanger
- "Silicon Nitride igniter"
- Color-coded low-voltage terminals
- Multi-speed ECM blower motor with continuous fan speed
- Fault code LED Output
- Single-Stage gas Valve
- Single-speed inducer draft blower

CABINET FEATURES:

- Multi-position installation: upflow, horizontal left or right
- Convenient left or right connection for gas and electrical service
- Cabinet air leakage (Qleak) less than or equal to 2%
- Foil faced insulated heat exchanger section
- Bottom or side return air applications
- Bottom or side return air applications



At Goodman, we believe in American dependability. Units are designed, engineered and assembled in the U.S.A.



Submittal Data Sheet

14.0 SEER, Air Conditioner System,1.5 Ton, Outdoor Unit-GSX130181E*

Submitted By : Goodman/Amana Unitary Test System

Submitted To : N/A

Tags : AHRI 204541890 Products [GSX130181E* , CA*FA2318*6A*+TXV+HSK, GMES800603ANA*] , SEER 14.0 , EER 11.5

INDOOR FURNACE UNIT DETAILS : GMES800603ANA*

Power Supply (V/Hz/Ph):	115/60/1	Temperature Rise Range High Fire (° F):	20-50
Min. Circuit Amps MCA (A):	8.7	Temperature Rise Range Low Fire (° F):	-
Max Overcurrent Protection (MOP) (A):	15.0	High Fire Input Capacity :	60,000
AFUE :	80	High Fire Output Capacity :	48,000
Vent Diameter (In):	4	Low Fire Input Capacity :	N/A
Net Weight (lb):	-	Low fire output Capacity :	N/A
Gross Weight (lb):	89	Dimensions (HxWxD) (in):	33.5 x 14 x 28



At Goodman, we believe in American dependability. Units are designed, engineered and assembled in the U.S.A.



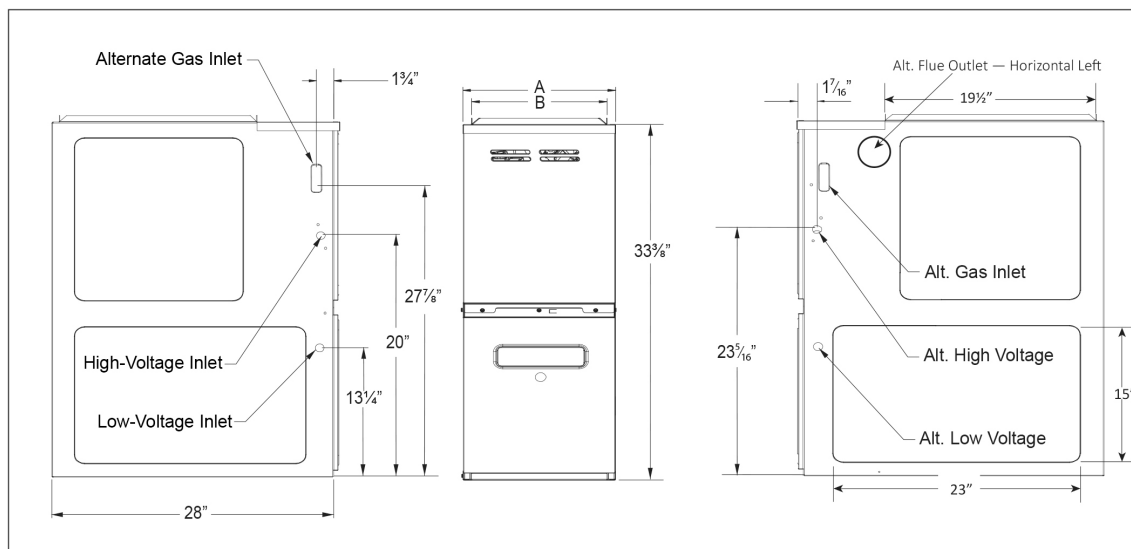
Submittal Data Sheet

14.0 SEER, Air Conditioner System, 1.5 Ton, Outdoor Unit-GSX130181E*

Submitted By : Goodman/Amana Unitary Test System

Submitted To : N/A

Tags : AHRI 204541890 Products [GSX130181E* , CA*FA2318*6A*+TXV+HSK, GMES800603ANA*] , SEER 14.0 , EER 11.5



MODEL	A	B
GMES800403A*	14"	12 1/2"
GMES800603A*	14"	12 1/2"
GMES800603B*	17 1/2"	16"
GMES800604B*	17 1/2"	16"
GMES800803B*	17 1/2"	16"

MODEL	A	B
GMES800804B*	17 1/2"	16"
GMES800804C*	21"	19 1/2"
GMES800805C*	21"	19 1/2"
GMES801005C*	21"	19 1/2"
GMES801205D*	24 1/2"	23"

NOTES

- Line voltage wiring can enter through the right or left side of furnace. Low-voltage wiring can enter through the right or left side of furnace.
- Conversion kits for high-altitude (4500+ ft) natural gas operation are available. Contact your Goodman distributor or dealer for details.
- Installer must supply the following gas line fittings, according to which entrance is used:
Left: One 90° street elbow; one 2 1/2" pipe nipple; one 90° elbow; straight pipe; one ground joint union
Right: Straight pipe to reach gas valve

MINIMUM CLEARANCES TO COMBUSTIBLE MATERIALS

SIDES	REAR	FRONT ¹	VENT ²		TOP
			SW	B	
1"	0"	3"	6"	1"	1"

¹ 24" clearance for serviceability recommended.

² Single Wall Vent (SW) to be used only as a connector. Refer to the latest editions of the National Fuel Gas Code NFPA 54/ ANSI Z223.1 (in the USA) and the Canada National Standard of Canada, CAN/CSA B149.1 and CAN/CSA B142.2 (in Canada).

Note: GMES80 approved for line contact in the horizontal position.



At Goodman, we believe in American dependability. Units are designed, engineered and assembled in the U.S.A.

