

## Submittal Data Sheet

15.5 SEER, Heat Pump System, 4.0 Ton, Outdoor Unit-GSZC160481C\*

Submitted By : Goodman/Amana Unitary Test System

Submitted To : N/A

Tags : AHRI 202541841 Products [GSZC160481C\* , AVPTC59C14B\* , ] , SEER 15.5 , EER 12.0 , HSPF 8.5

### STANDARD FEATURES:

- High-efficiency two-stage scroll compressor
- High-efficiency two-speed ECM condenser fan motor
- ComfortNet™ Communications System compatible
- Factory-installed filter drier
- Factory-installed suction line accumulator
- Factory-installed compressor crankcase heater
- Factory-installed high-capacity muffler
- Factory-installed high and low-pressure switches
- High-density foam compressor sound blanket
- Factory-installed sensors monitoring coil and ambient temperature
- Copeland® ComfortAlert™ built in diagnostics
- SmartShift® technology with short-cycle protection to ensure quiet, reliable defrost
- In communicating mode, only two low voltage wires to the outdoor unit are required
- Contactor with lug connection
- Customized control algorithms
- Fully charged for fifteen feet of tubing length
- AHRI Certified-ETL Listed
- Color-coded terminal strip for non-communicating set-up
- Copper tube & enhanced aluminum fin coil.

### CABINET FEATURES:

- Heavy-gauge galvanized steel cabinet and louvered coil guards
- Service valves with sweat connections and easy-access gauge ports
- Engineered sound control top design
- Wire fan discharge grille
- Baked-on powder-paint finish with 500-hour salt-spray approval
- Single-panel access to controls with space for field-installed accessories
- Service port and controls are accessible while unit is operating
- Compact footprint
- Rust-resistant screws
- When properly anchored, meets the 2010 Florida Building Code unit integrity requirements for hurricane-type winds (Anchor bracket kits available.)



At Goodman, we believe in American dependability. Units are designed, engineered and assembled in the U.S.A.



## Submittal Data Sheet

15.5 SEER, Heat Pump System, 4.0 Ton, Outdoor Unit-GSZC160481C\*

Submitted By : Goodman/Amana Unitary Test System

Submitted To : N/A

Tags : AHRI 202541841 Products [GSZC160481C\* , AVPTC59C14B\* , ] , SEER 15.5 , EER 12.0 , HSPF 8.5

### SYSTEM PERFORMANCE

Outdoor Unit Model No.:	GSZC160481C*	Description :	15.5 SEER, Heat Pump System, 4.0 Ton Outdoor System
Indoor Unit Model No.:	AVPTC59C14B*		
TXV/PISTON :	Factory		
Rated Cooling Conditions:	Outdoor (°F DB/WB):95/75 Indoor (°F DB/WB):80/67	Rated Heating Conditions:	Outdoor (°F DB/WB):47/43 Indoor (°F DB/WB):70/60
Rated Cooling Capacity (Btu/hr):	47000	OD Rated Heating Capacity (Btu/hr)	47000
EER:	12.0	Heating COP:	3.92
SEER:	15.5	* HSPF:	8.5

### OUTDOOR UNIT DETAILS : GSZC160481C\*

Power Supply (V/Hz/Ph):	208/230/60/1	Compressor Type:	Scroll
Min. Circuit Amps MCA (A):	26.5	Compressor Stages:	Two Stage
Max Overcurrent Protection (MOP) (A):	45	Suction Valve Connection Size (in):	7/8
Compressor Rated Load Amps :	20.4	Liquid Valve Connection Size (in):	3/8
Refrigerant Type:	R-410A	Sound Power(High/Med/Low) (dBA):	75 / - / 74
Holding Refrigerant Charge (oz):	244	Cooling Operation Range (°F DB):	55 - 115
Additional Charge (oz/ft):	.6	Heating Operation Range (°F DB):	-20 - 70
Pre-charge Piping (Length) (ft):	15	Net Weight (lb):	291
Dimensions (HxWxD) (in):	36-1/4 x 35-3/4 x 35-3/4	Gross Weight (lb):	319
*Max. Pipe Length (Vertical) (ft):	50	*Max. Pipe Length (Total) (ft):	80

*\*Refer to Long Line Set Application TP-107 for lines greater than 80 ft. or vertical elevation changes more than 50 ft. for single stage equipment and 25 ft. for 2-stage equipment.*



At Goodman, we believe in American dependability. Units are designed, engineered and assembled in the U.S.A.



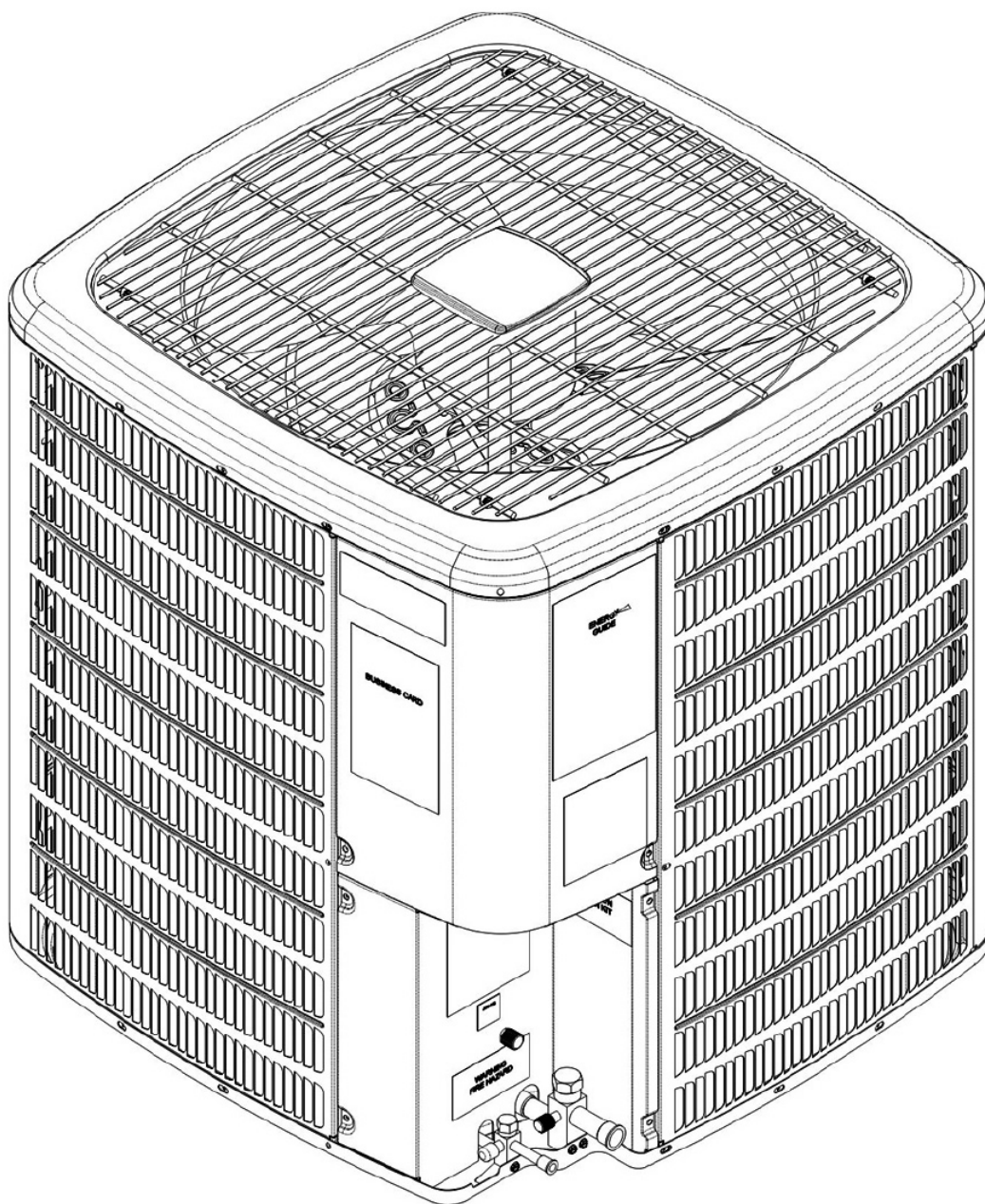
## Submittal Data Sheet

15.5 SEER, Heat Pump System, 4.0 Ton, Outdoor Unit-GSZC160481C\*

Submitted By : Goodman/Amana Unitary Test System

Submitted To : N/A

Tags : AHRI 202541841 Products [GSZC160481C\* , AVPTC59C14B\* , ] , SEER 15.5 , EER 12.0 , HSPF 8.5



At Goodman, we believe in American dependability. Units are designed, engineered and assembled in the U.S.A.



## Submittal Data Sheet

15.5 SEER, Heat Pump System, 4.0 Ton, Outdoor Unit-GSZC160481C\*

Submitted By : Goodman/Amana Unitary Test System

Submitted To : N/A

Tags : AHRI 202541841 Products [GSZC160481C\* , AVPTC59C14B\* , ] , SEER 15.5 , EER 12.0 , HSPF 8.5

### STANDARD FEATURES:

- Internal factory-installed thermal expansion valves for cooling and heat pump applications
- Variable-speed ECM blower motor
- Integrated communicating ComfortBridge Technology
- Commissioning and diagnostics via on board Bluetooth with the CoolCloud phone and tablet application.
- Auto configuration of the airflow and tonnage in communicating mode
- Provides constant CFM over a wide range of static pressure conditions independent of duct system
- CFM indicator
- Fault recall of six most recent faults
- Provides adjustable low CFM for efficient fan-only operation
- Improved humidity and comfort control
- Built-in compatibility with multi-stage heat pump and cooling applications

### CABINET FEATURES:

- **DATA IS NOT AVAILABLE**



At Goodman, we believe in American dependability. Units are designed, engineered and assembled in the U.S.A.



Submittal Data Sheet

15.5 SEER, Heat Pump System,4.0 Ton, Outdoor Unit-GSZC160481C\*

Submitted By : Goodman/Amana Unitary Test System

Submitted To : N/A

Tags : AHRI 202541841 Products [GSZC160481C\* , AVPTC59C14B\*, ] , SEER 15.5 , EER 12.0 , HSPF 8.5

INDOOR AIR HANDLER UNIT DETAILS : AVPTC59C14

Power Supply (V/Hz/Ph):	208/240/60/1	Suction Connection Size (in):	7/8
Min. Circuit Amps MCA (A):	8.6/8.6	Liquid Connection Size (in):	3/8
Max Overcurrent Protection (MOP) (A):	15	Condensate Connection (in):	3/4
Net Weight (lb):	144	Dimensions (HxWxD) (in):	53-1/2 x 21 x 21
Gross Weight (lb ):	143		

The Electrical data shown here in submittal is for Air Handler only with no heat added. When adding Heat Kit please refer to Heat Kit Spec Sheet for electrical requirements



At Goodman, we believe in American dependability. Units are designed, engineered and assembled in the U.S.A.



## Submittal Data Sheet

15.5 SEER, Heat Pump System, 4.0 Ton, Outdoor Unit-GSZC160481C\*

Submitted By : Goodman/Amana Unitary Test System

Submitted To : N/A

Tags : AHRI 202541841 Products [GSZC160481C\* , AVPTC59C14B\* , ] , SEER 15.5 , EER 12.0 , HSPF 8.5



At Goodman, we believe in American dependability. Units are designed, engineered and assembled in the U.S.A.



## Submittal Data Sheet

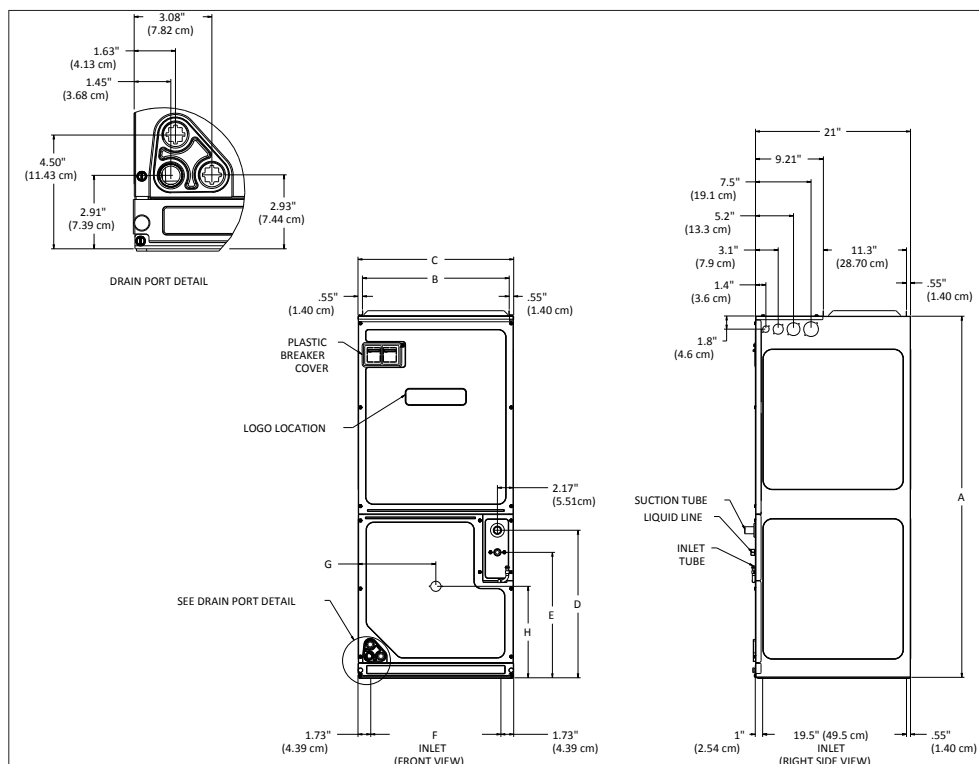
15.5 SEER, Heat Pump System, 4.0 Ton, Outdoor Unit-GSZC160481C\*

Submitted By : Goodman/Amana Unitary Test System

Submitted To : N/A

Tags : AHRI 202541841 Products [GSZC160481C\* , AVPTC59C14B\* , ] , SEER 15.5 , EER 12.0 , HSPF 8.5

### DIMENSIONS – AVPTC24/ 42/ 48/ 60



MODEL	A	B	C	D	E	F	G	H
AVPTC24B14	45	16 $\frac{1}{4}$	17 $\frac{1}{2}$	18	15	14 $\frac{3}{8}$	8 $\frac{1}{8}$	11 $\frac{5}{8}$
AVPTC42D14	58	23 $\frac{3}{8}$	24 $\frac{1}{2}$	28 $\frac{3}{8}$	25 $\frac{3}{8}$	21 $\frac{3}{8}$	12 $\frac{3}{8}$	12 $\frac{3}{8}$
AVPTC48C14	49	19 $\frac{3}{8}$	21	20	17	17 $\frac{1}{8}$	10 $\frac{1}{2}$	12 $\frac{3}{8}$
AVPTC48D14	58	23 $\frac{3}{8}$	24 $\frac{1}{2}$	28 $\frac{3}{8}$	25 $\frac{3}{8}$	21 $\frac{3}{8}$	12 $\frac{3}{8}$	12 $\frac{3}{8}$
AVPTC60D14	58	23 $\frac{3}{8}$	24 $\frac{1}{2}$	28 $\frac{3}{8}$	25 $\frac{3}{8}$	21 $\frac{3}{8}$	12 $\frac{3}{8}$	12 $\frac{3}{8}$



www.amana-hac.com

At Goodman, we believe in American dependability. Units are designed, engineered and assembled in the U.S.A.



Submittal Data Sheet

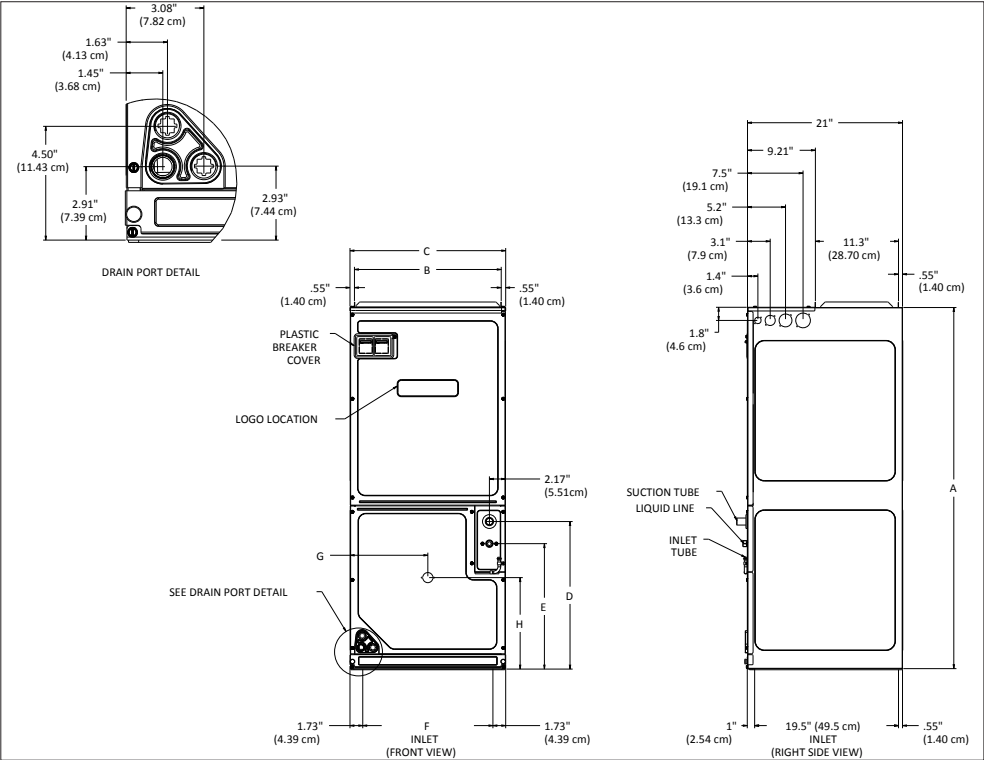
15.5 SEER, Heat Pump System,4.0 Ton, Outdoor Unit-GSZC160481C\*

Submitted By : Goodman/Amana Unitary Test System

Submitted To : N/A

Tags : AHRI 202541841 Products [GSZC160481C\* , AVPTC59C14B\* , ] , SEER 15.5 , EER 12.0 , HSPF 8.5

DIMENSIONS – AVPTC24/ 42/ 48/ 60



MODEL	A	B	C	D	E	F	G	H
AVPTC24B14	45	16 <sup>3</sup> / <sub>16</sub>	17 <sup>1</sup> / <sub>2</sub>	18	15	14 <sup>3</sup> / <sub>16</sub>	8 <sup>13</sup> / <sub>16</sub>	11 <sup>15</sup> / <sub>16</sub>
AVPTC42D14	58	23 <sup>3</sup> / <sub>16</sub>	24 <sup>1</sup> / <sub>2</sub>	28 <sup>3</sup> / <sub>16</sub>	25 <sup>3</sup> / <sub>16</sub>	21 <sup>3</sup> / <sub>16</sub>	12 <sup>3</sup> / <sub>16</sub>	12 <sup>3</sup> / <sub>16</sub>
AVPTC48C14	49	19 <sup>5</sup> / <sub>16</sub>	21	20	17	17 <sup>11</sup> / <sub>16</sub>	10 <sup>1</sup> / <sub>2</sub>	12 <sup>3</sup> / <sub>16</sub>
AVPTC48D14	58	23 <sup>3</sup> / <sub>16</sub>	24 <sup>1</sup> / <sub>2</sub>	28 <sup>3</sup> / <sub>16</sub>	25 <sup>3</sup> / <sub>16</sub>	21 <sup>3</sup> / <sub>16</sub>	12 <sup>3</sup> / <sub>16</sub>	12 <sup>3</sup> / <sub>16</sub>
AVPTC60D14	58	23 <sup>3</sup> / <sub>16</sub>	24 <sup>1</sup> / <sub>2</sub>	28 <sup>3</sup> / <sub>16</sub>	25 <sup>3</sup> / <sub>16</sub>	21 <sup>3</sup> / <sub>16</sub>	12 <sup>3</sup> / <sub>16</sub>	12 <sup>3</sup> / <sub>16</sub>



